



National
Urban League

United States™
Census
Bureau

Profile America Forum on the Black Population

The Black Population: 2010

Nicholas A. Jones and Tallese D. Johnson

Racial Statistics Branch, U.S. Census Bureau

Presentation for the Profile America Forum on the Black Population
Sponsored by the U.S. Census Bureau and the National Urban League
(BET Studios/Headquarters • Washington, DC • February 1, 2012)

Topics Presented

- Race concepts
- Definition of “Black”
- Population size and growth
- Geographic distribution

2010 Census Race Question

6. What is this person's race? Mark one or more boxes.

- White
- Black, African Am., or Negro
- American Indian or Alaska Native — *Print name of enrolled or principal tribe.* ↴

--	--	--	--	--	--	--	--	--	--	--	--	--	--	--	--	--	--

- Asian Indian
- Chinese
- Filipino
- Other Asian — *Print race, for example, Hmong, Laotian, Thai, Pakistani, Cambodian, and so on.* ↴
- Japanese
- Korean
- Vietnamese
- Native Hawaiian
- Guamanian or Chamorro
- Samoan
- Other Pacific Islander — *Print race, for example, Fijian, Tongan, and so on.* ↴

--	--	--	--	--	--	--	--	--	--	--	--	--	--	--	--	--	--

- Some other race — *Print race.* ↴

--	--	--	--	--	--	--	--	--	--	--	--	--	--	--	--	--	--

Race Concepts

- Race ***alone*** population – people who reported a single race group (e.g., Black alone)
- Race ***in combination*** population – people who reported more than one race group (e.g., Black ***and*** White; Black ***and*** Asian)
- Race ***alone or in combination*** population – all people who reported a particular race group, either alone, or in combination with one or more other race groups

Definition of “Black” Used in the 2010 Census

- According to the U.S. Office of Management and Budget, “Black or African American” refers to a person having origins in any of the Black racial groups of Africa
- Includes people who marked the “Black” checkbox
- Also includes respondents who reported
 - African American
 - Sub-Saharan African (e.g., Kenyan, Nigerian)
 - Afro-Caribbean (e.g., Haitian, Jamaican)

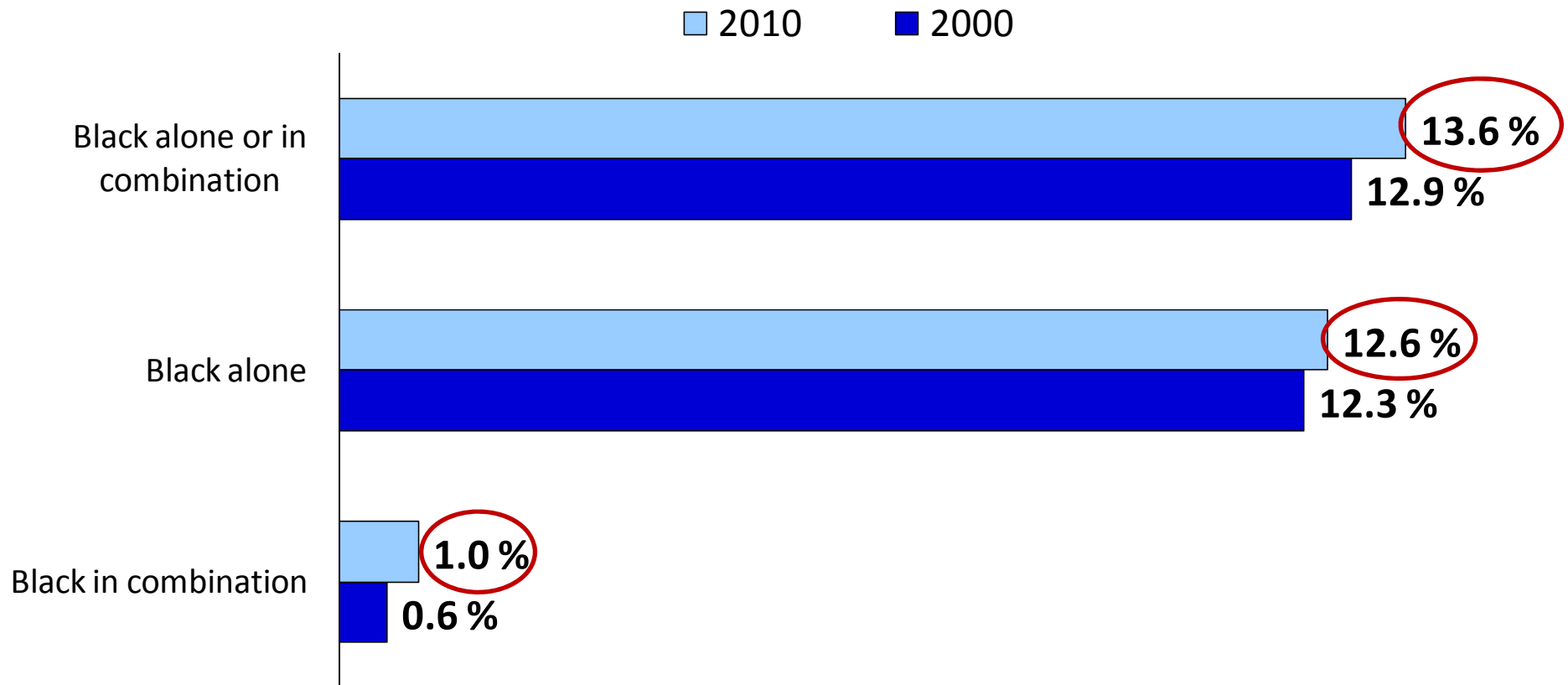
POPULATION SIZE AND GROWTH

Black Population: 2000 and 2010

	<u>2000</u>	<u>2010</u>
Black alone or in combination	36,419,434	42,020,743
Black alone	34,658,190	38,929,319
Black in combination	1,761,244	3,091,424

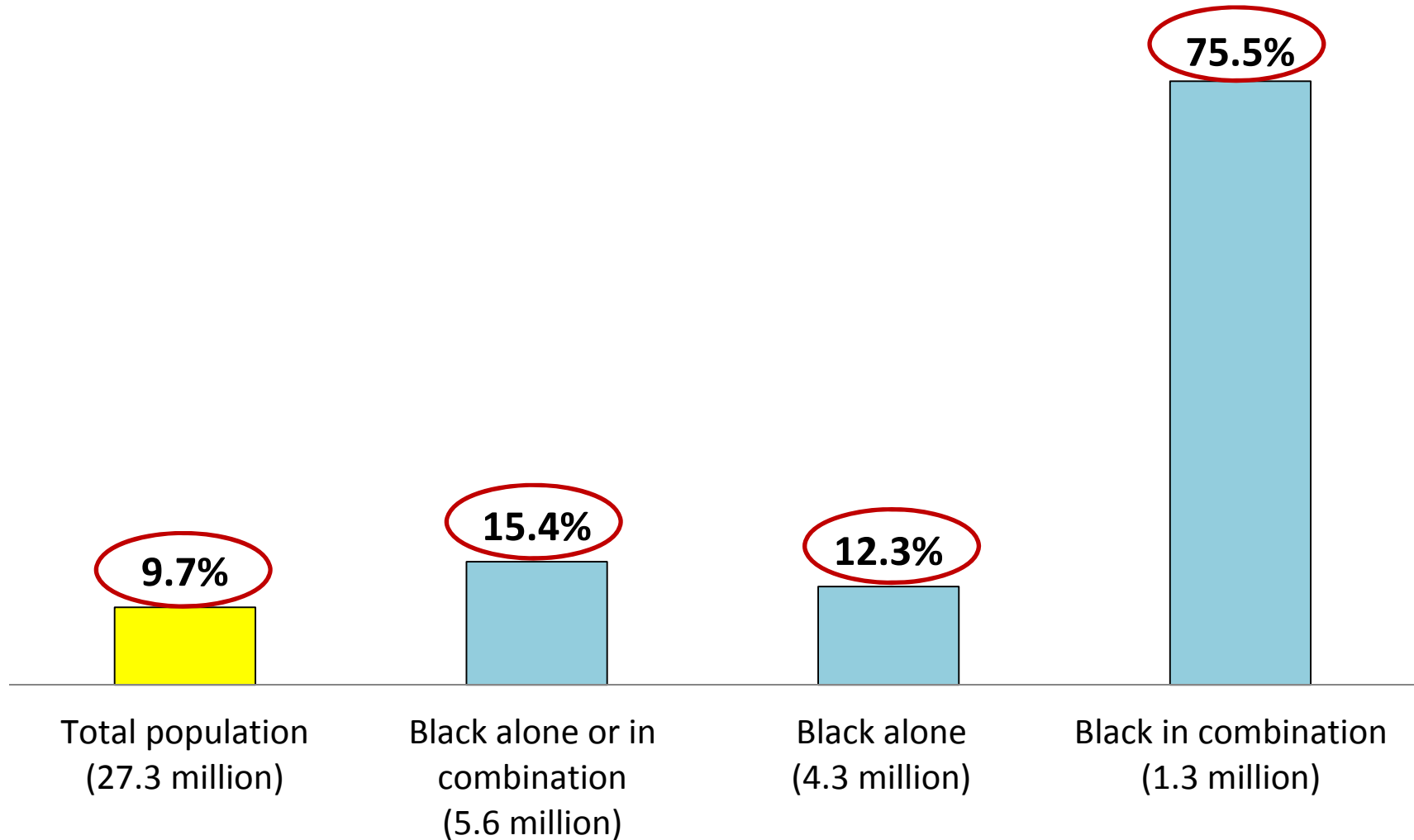
Sources: Census 2000 and 2010 Census

Black Population as a Percentage of the Total Population: 2000 and 2010



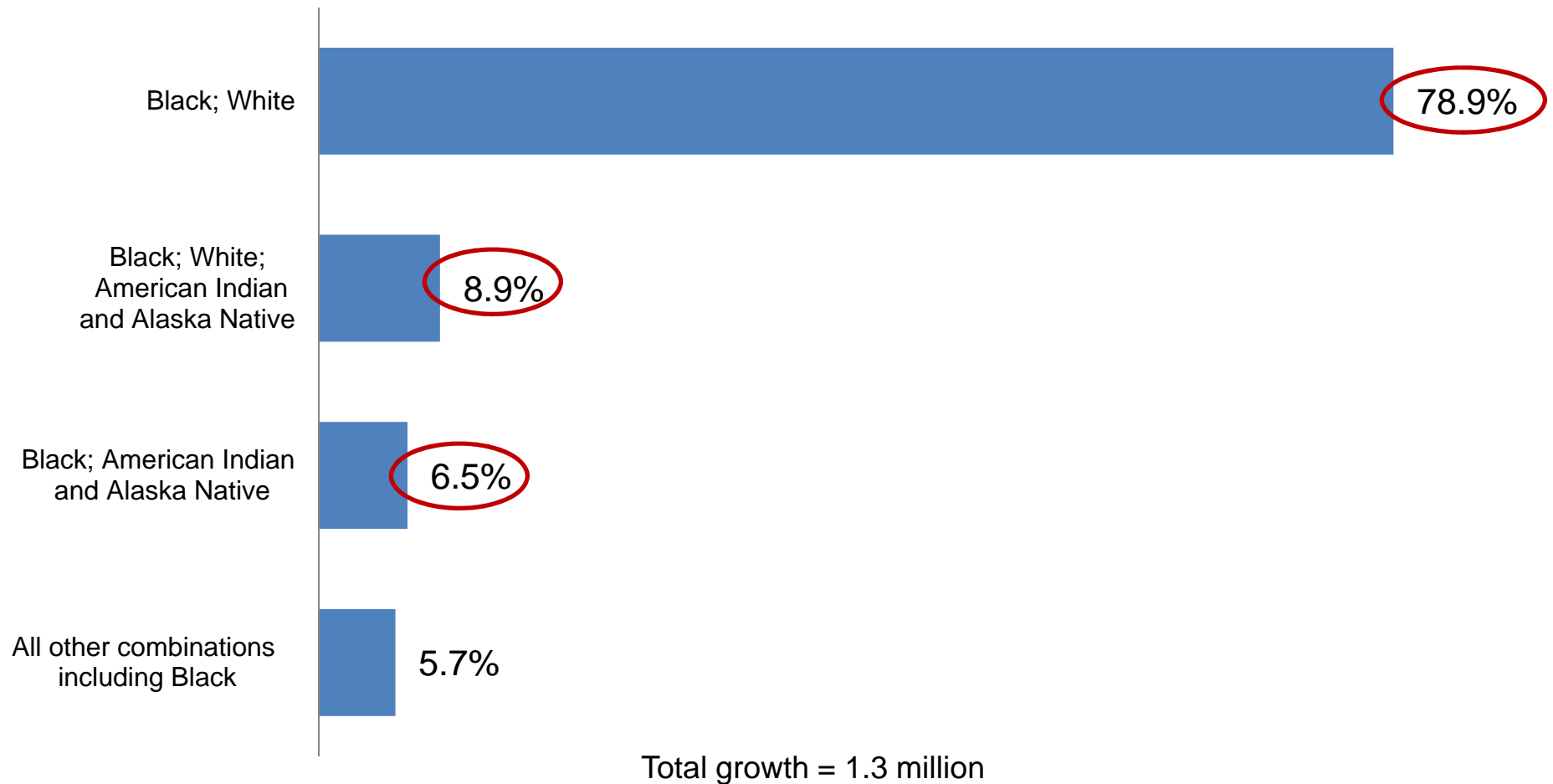
Sources: Census 2000 and 2010 Census

Growth of the Black Population: 2000 to 2010



Sources: Census 2000 and 2010 Census

Percentage Distribution of the Growth of the Black in Combination Population: 2000 to 2010



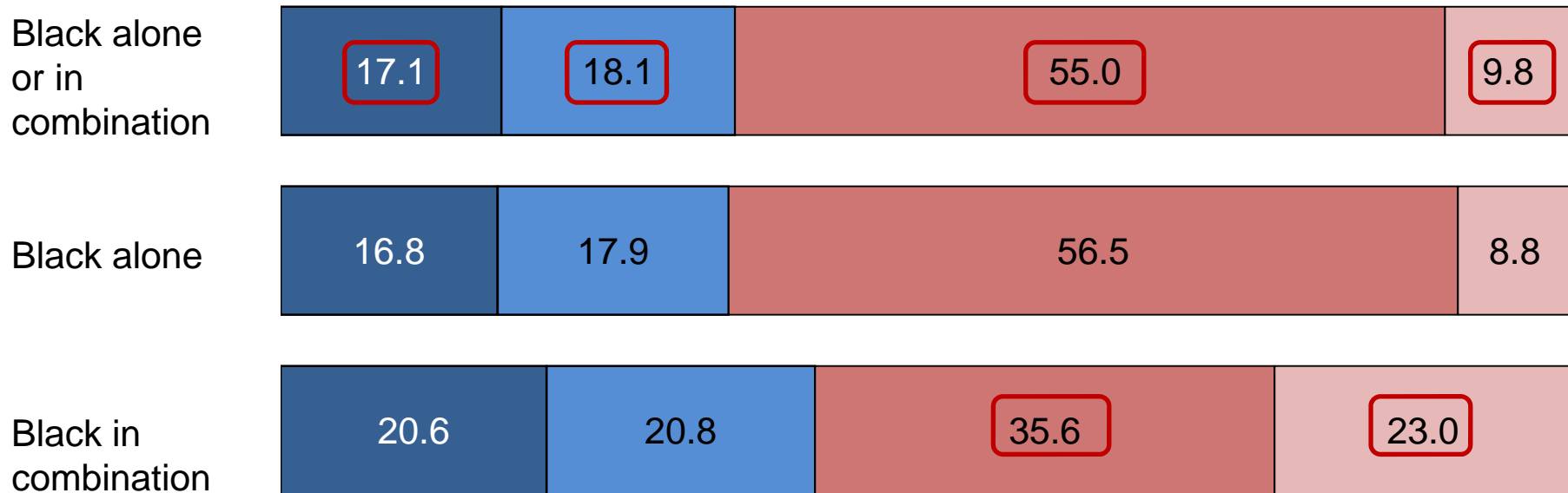
Sources: Census 2000 and 2010 Census

THE GEOGRAPHIC DISTRIBUTION OF THE BLACK POPULATION

REGIONS AND STATES

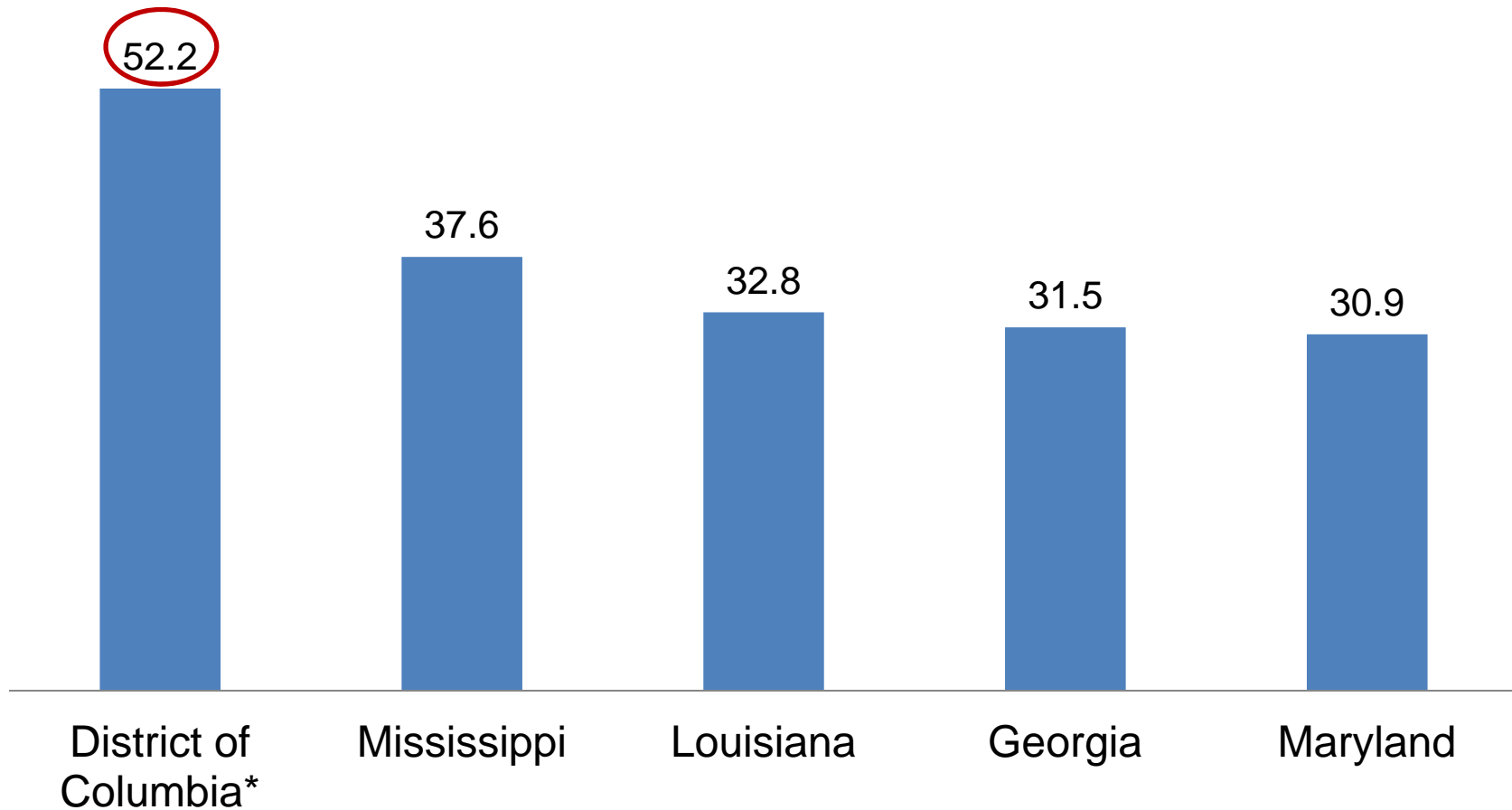
Percent Distribution of the Black Population by Region: 2010

■ Northeast ■ Midwest ■ South ■ West



Source: 2010 Census

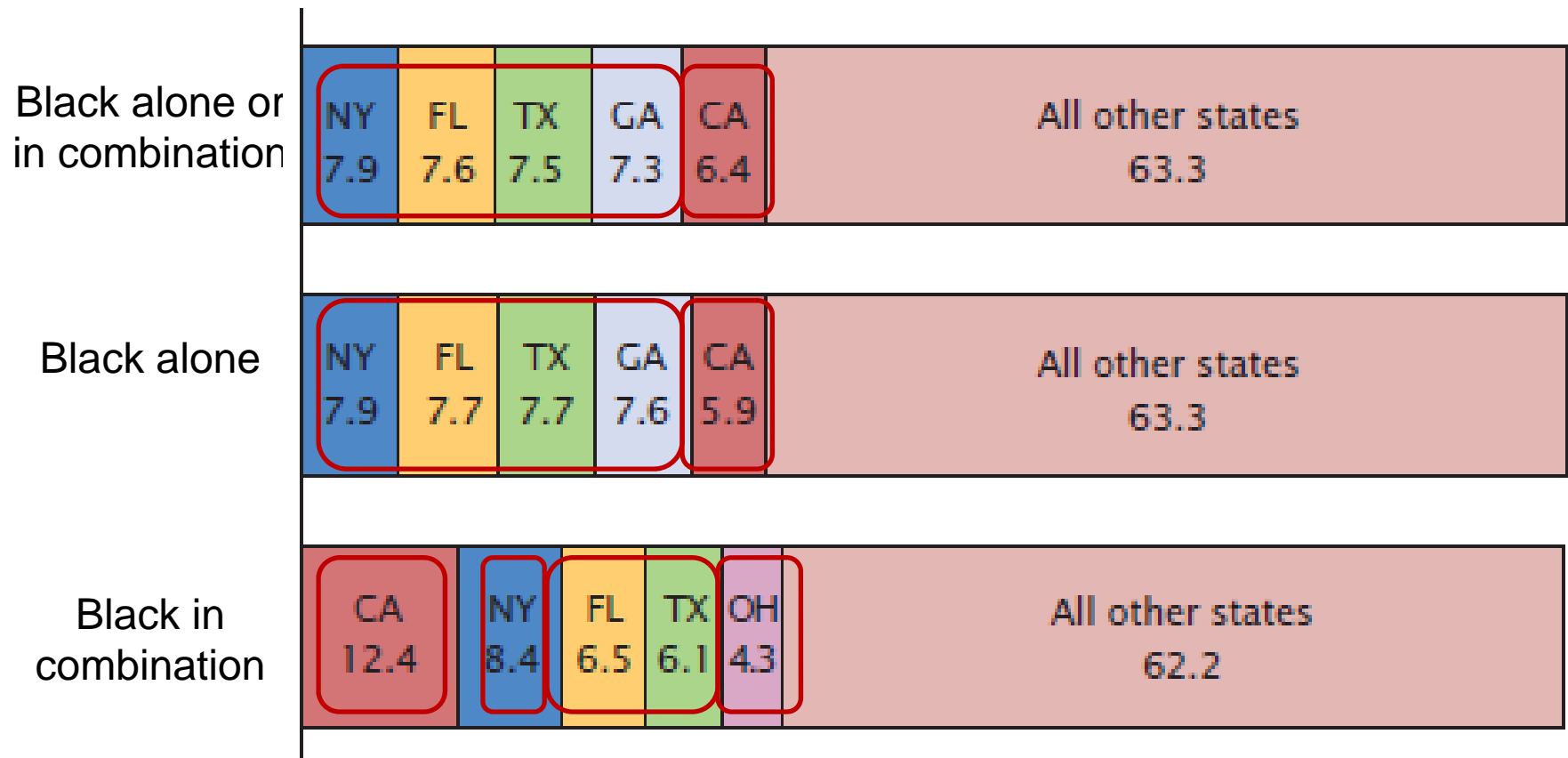
Top Five States with the Highest Proportion Black Alone or in Combination: 2010



*For this presentation, the District of Columbia is treated as a state equivalent.

Source: 2010 Census

Percentage Distribution of the Black Population by State: 2010

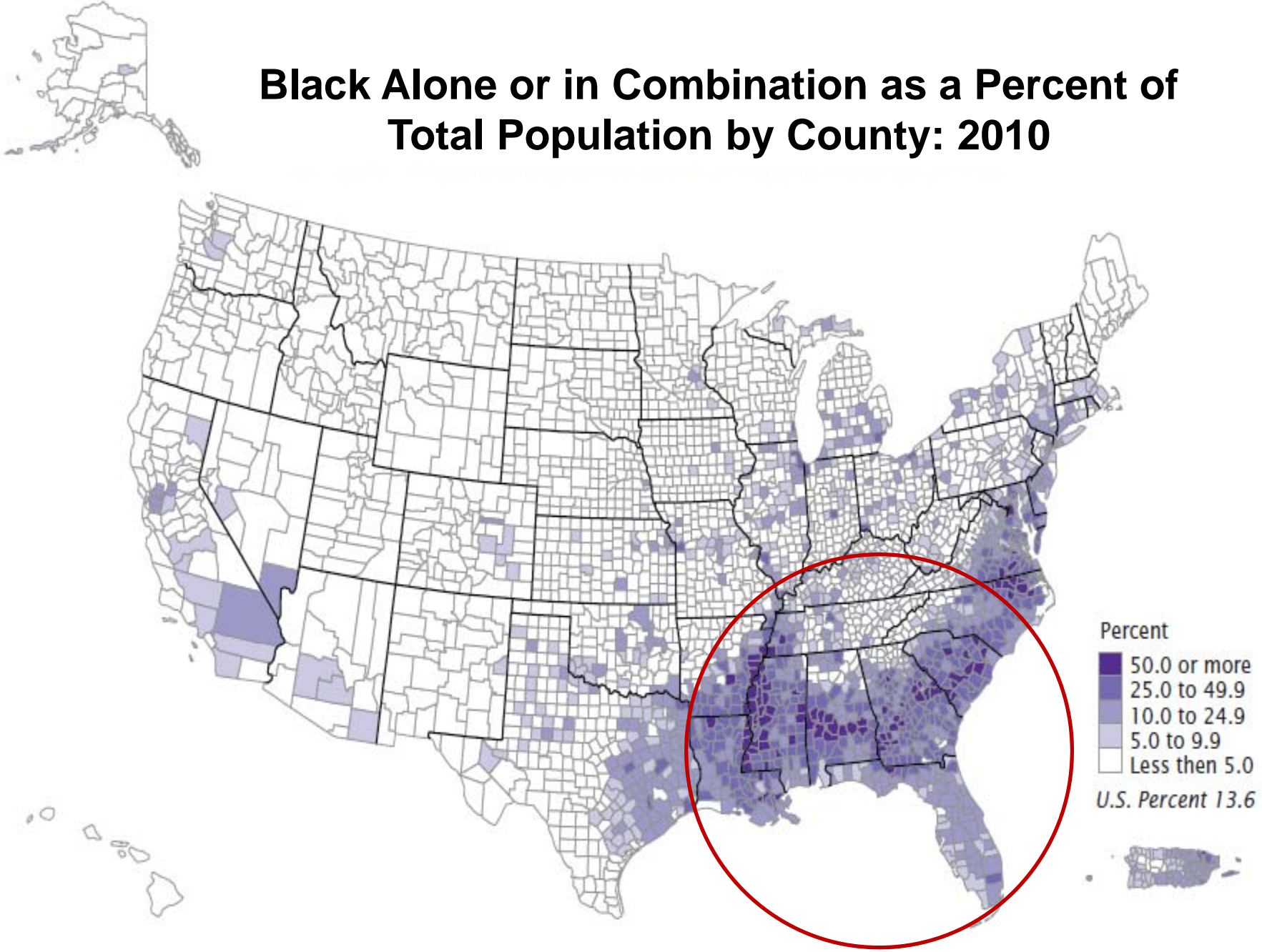


Note: Percentages may not add to 100.0 due to rounding.

Source: 2010 Census

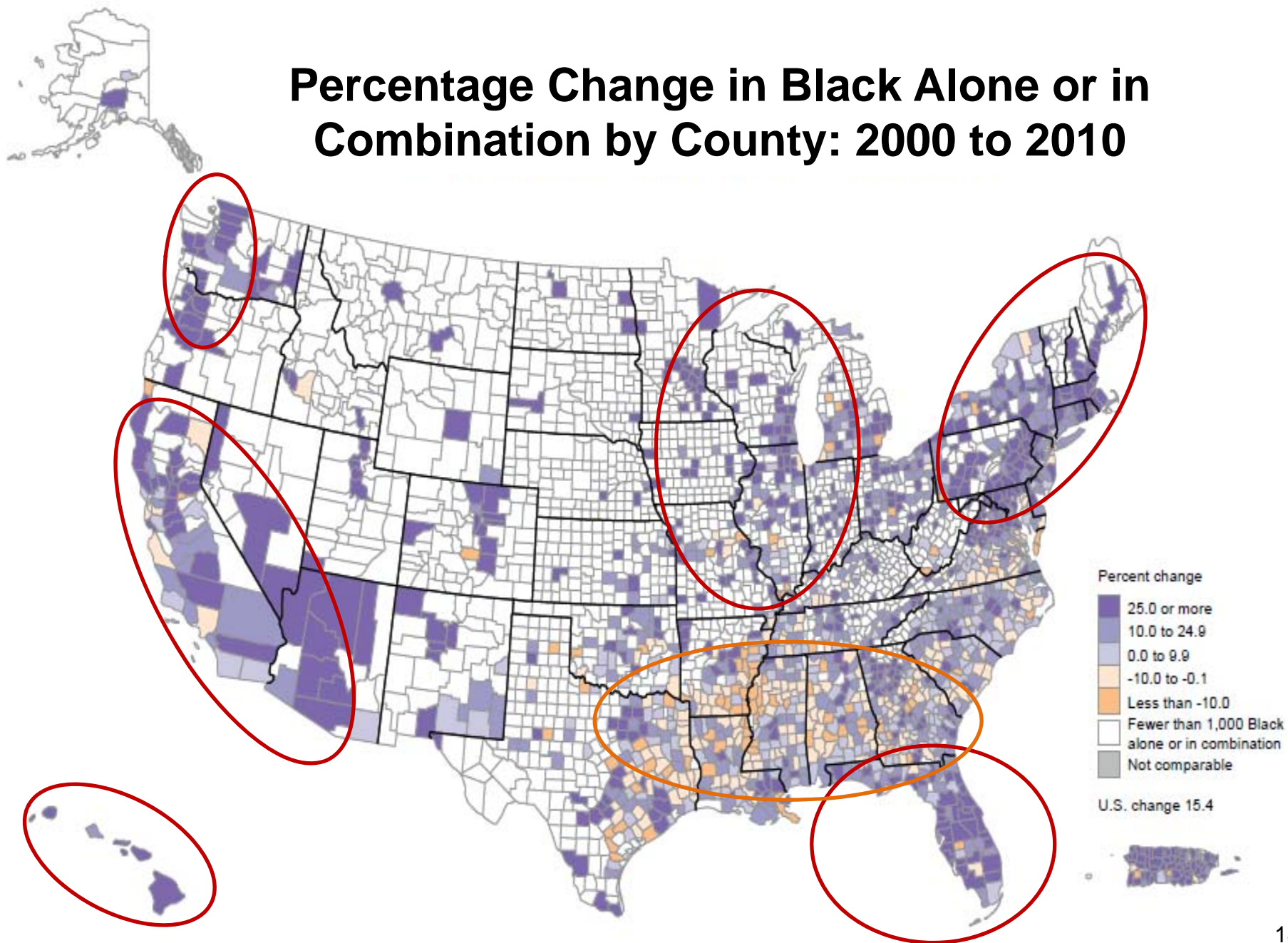
COUNTIES AND PLACES

Black Alone or in Combination as a Percent of Total Population by County: 2010



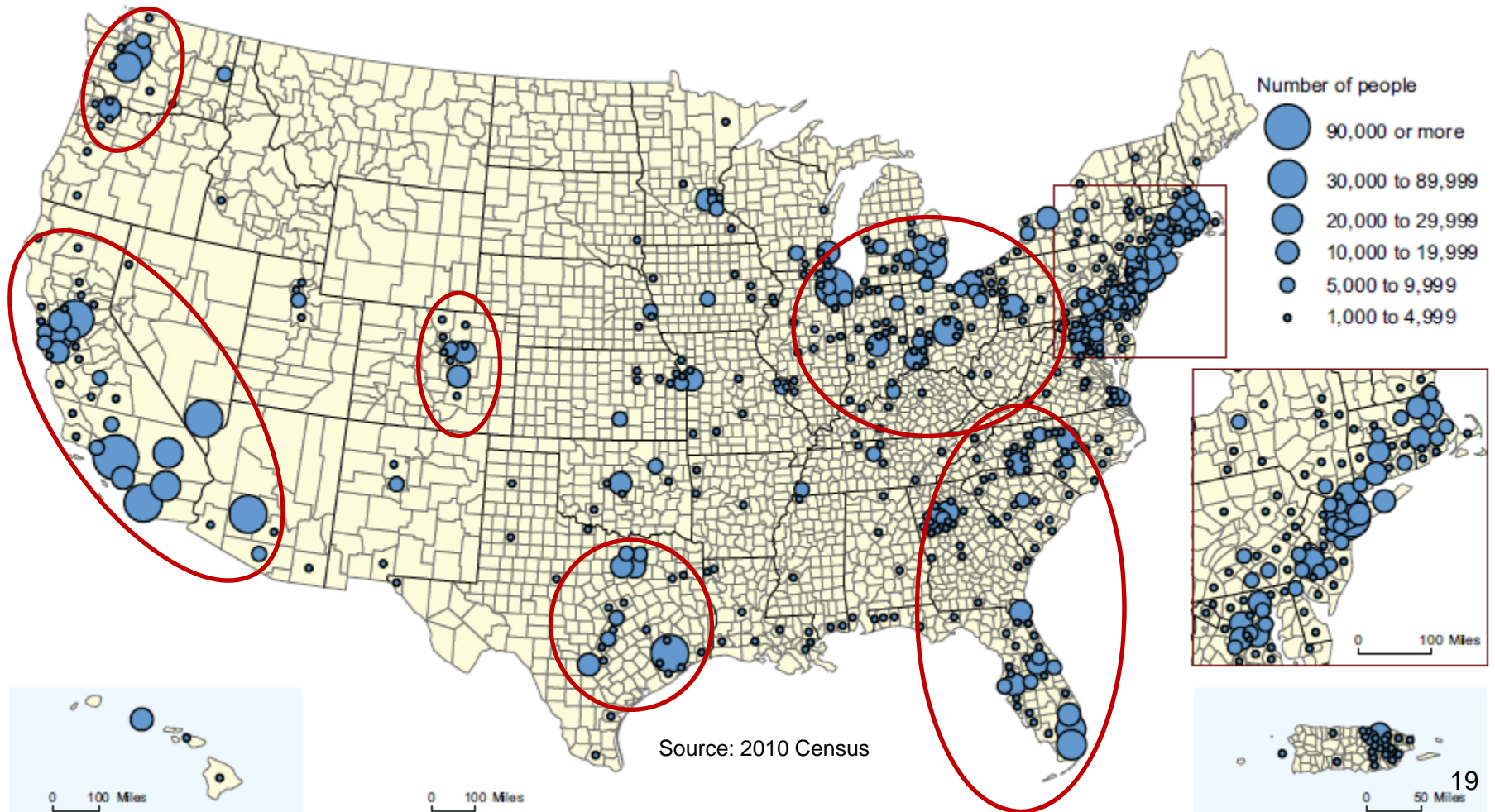
Source: 2010 Census

Percentage Change in Black Alone or in Combination by County: 2000 to 2010

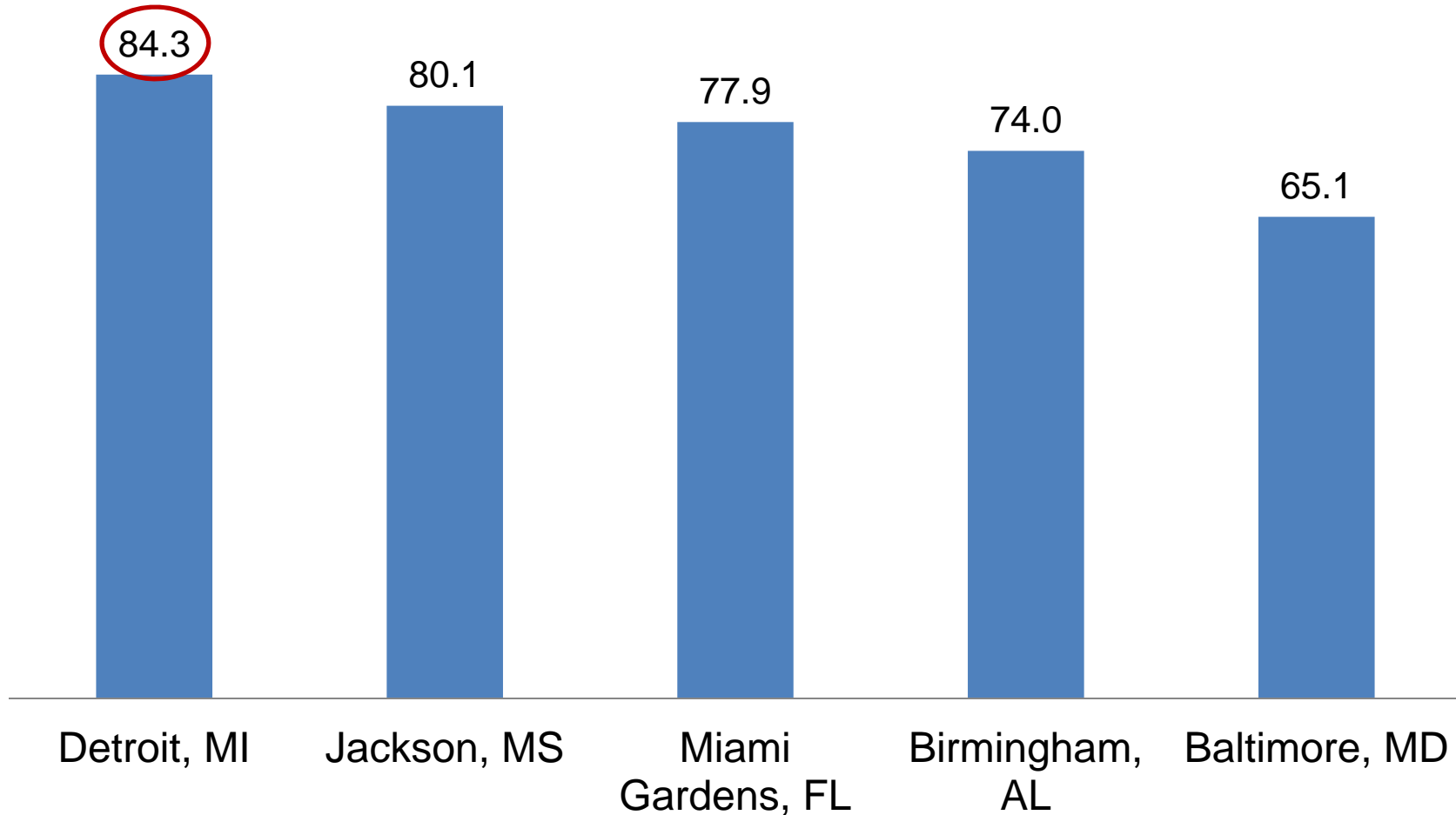


Sources: Census 2000 and 2010 Census

Black in Combination Population Distribution by County: 2010



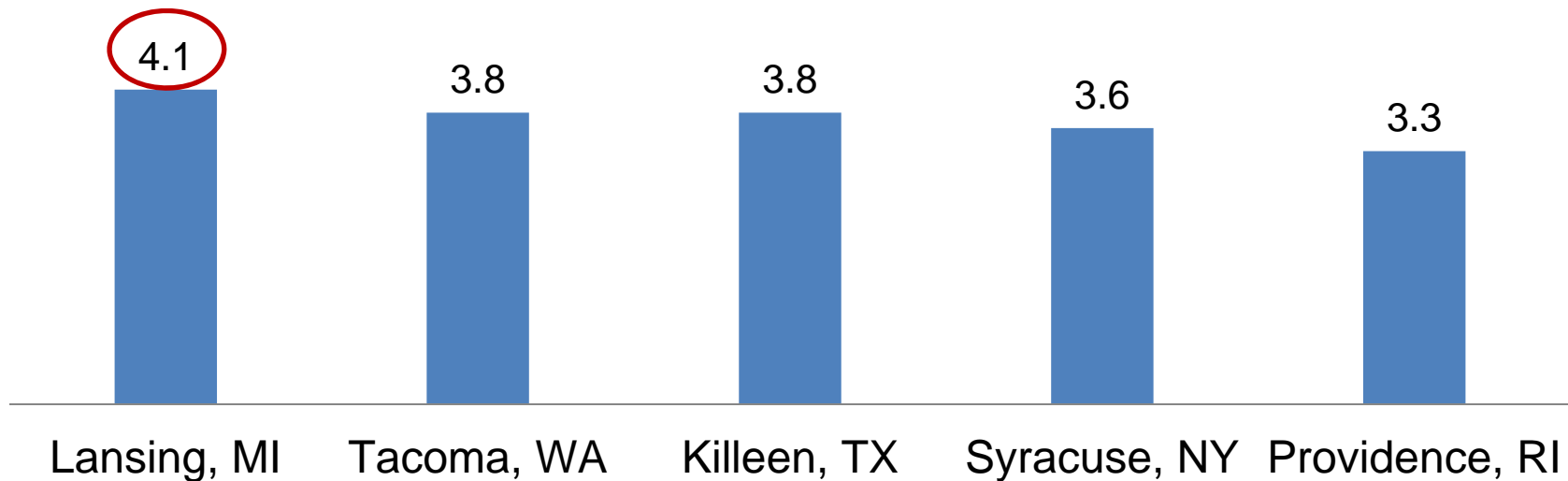
Top Five Places with the Highest Proportion Black Alone or in Combination: 2010*



* Places of 100,000 or more total population.

Source: 2010 Census

Top Five Places with the Highest Proportion Black in Combination: 2010*

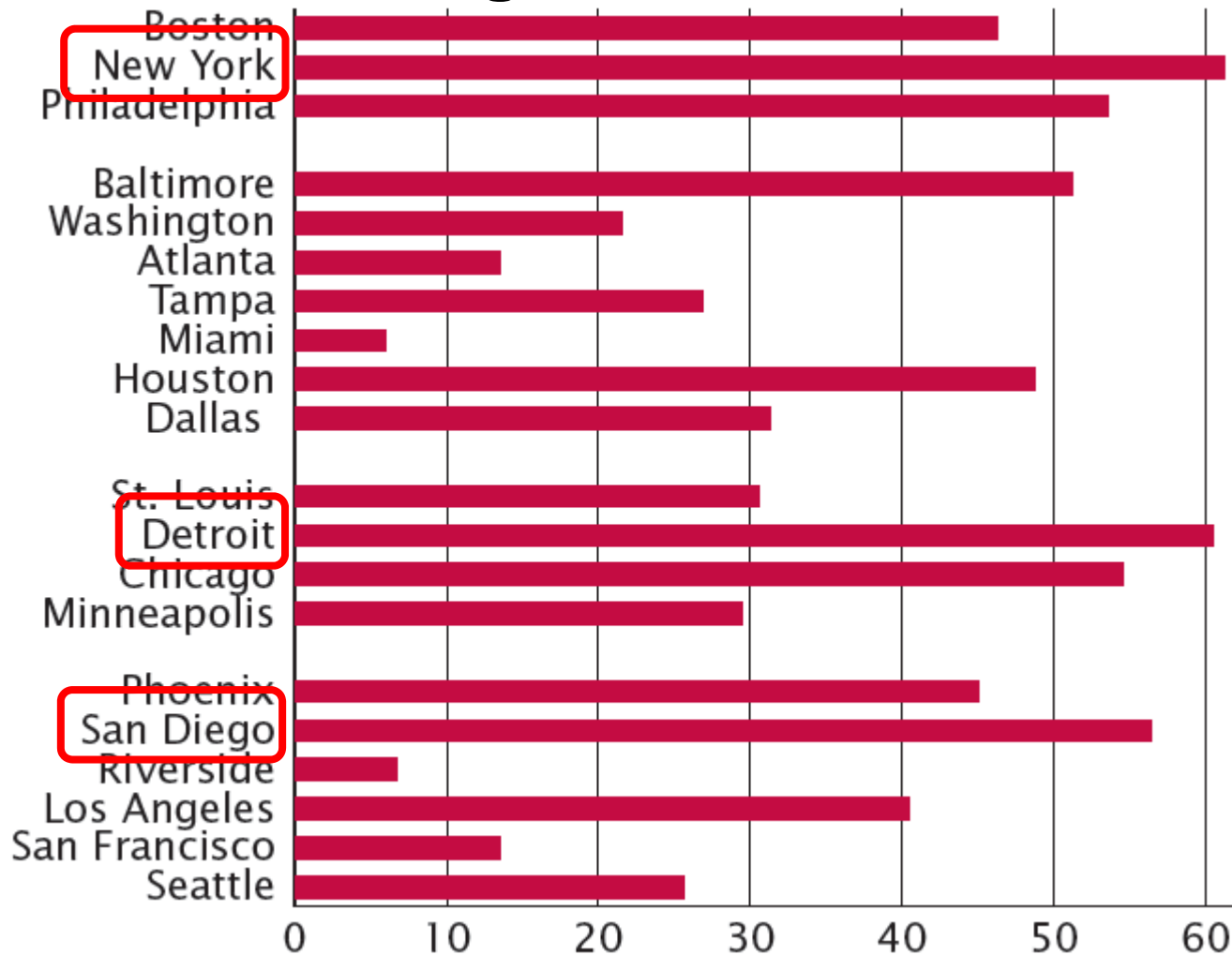


* Places of 100,000 or more total population.

Source: 2010 Census

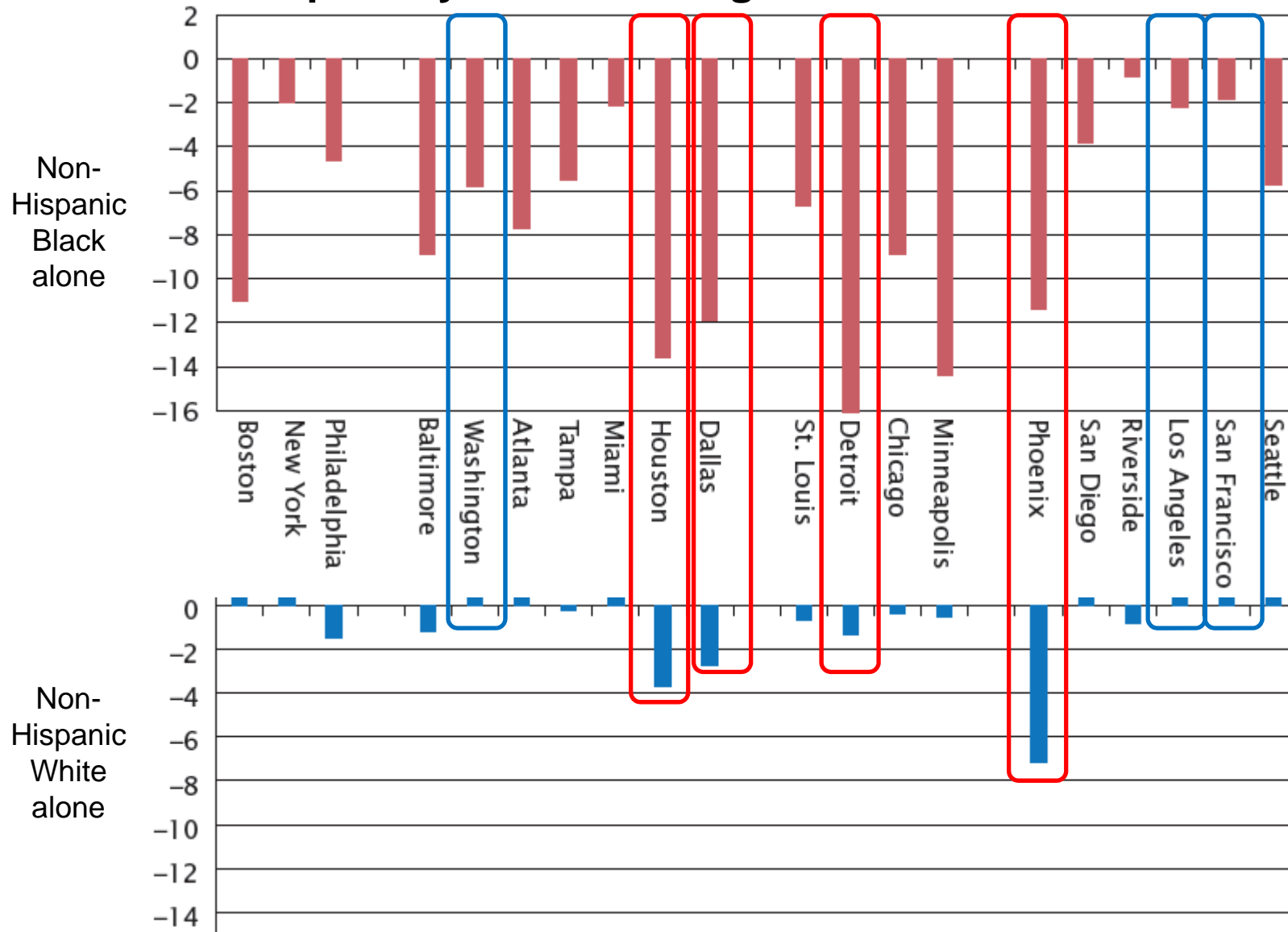
METROPOLITAN STATISTICAL AREAS

Proportion of Non-Hispanic Black Alone Population Living Inside the Largest Principal City of the 20 Largest Metro Areas: 2010



Source: 2010 Census

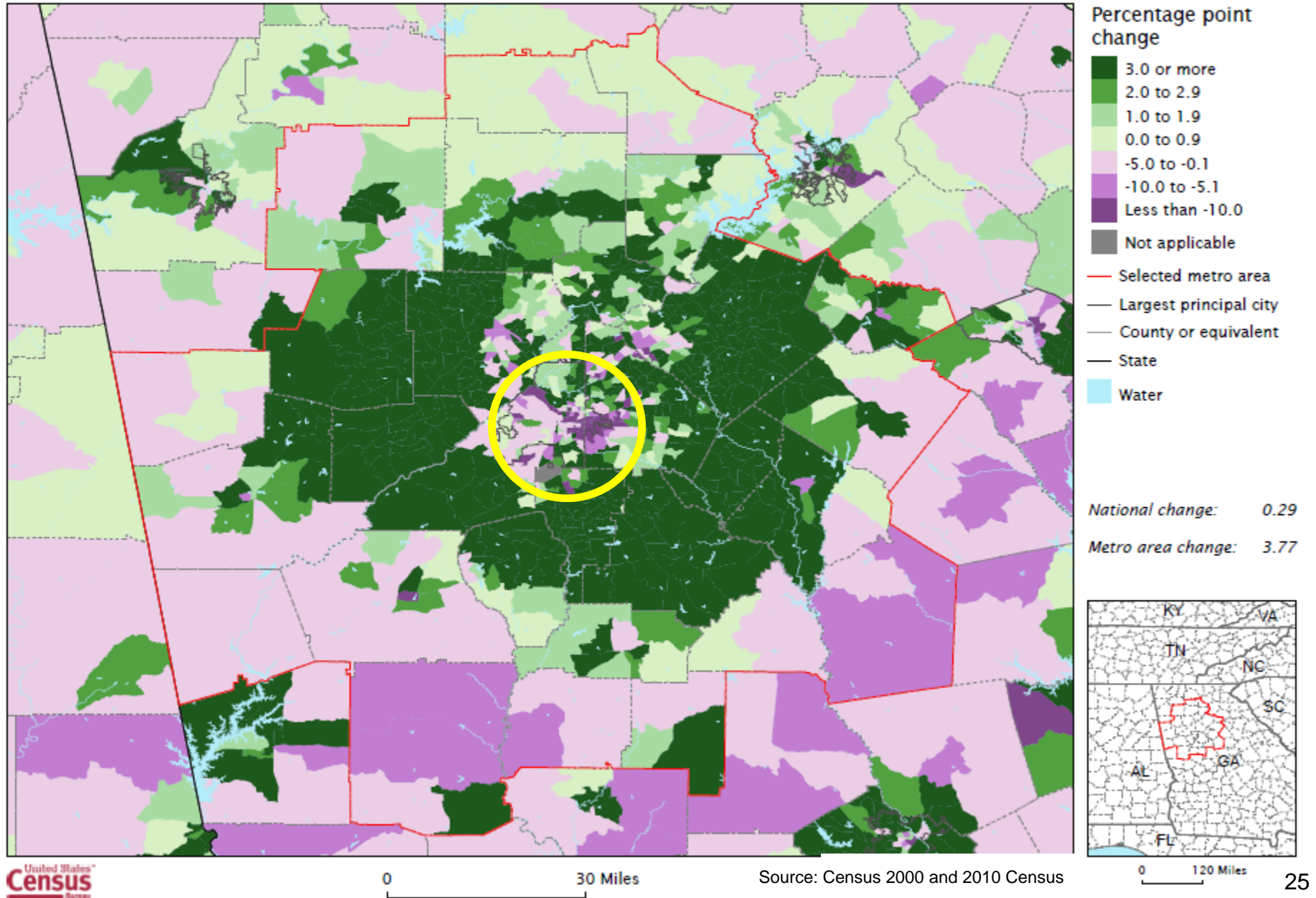
Percentage-Point Difference of Groups Living Inside the Largest Principal City of the 20 Largest Metro Areas: 2000 to 2010



Source: Census 2000 and 2010 Census

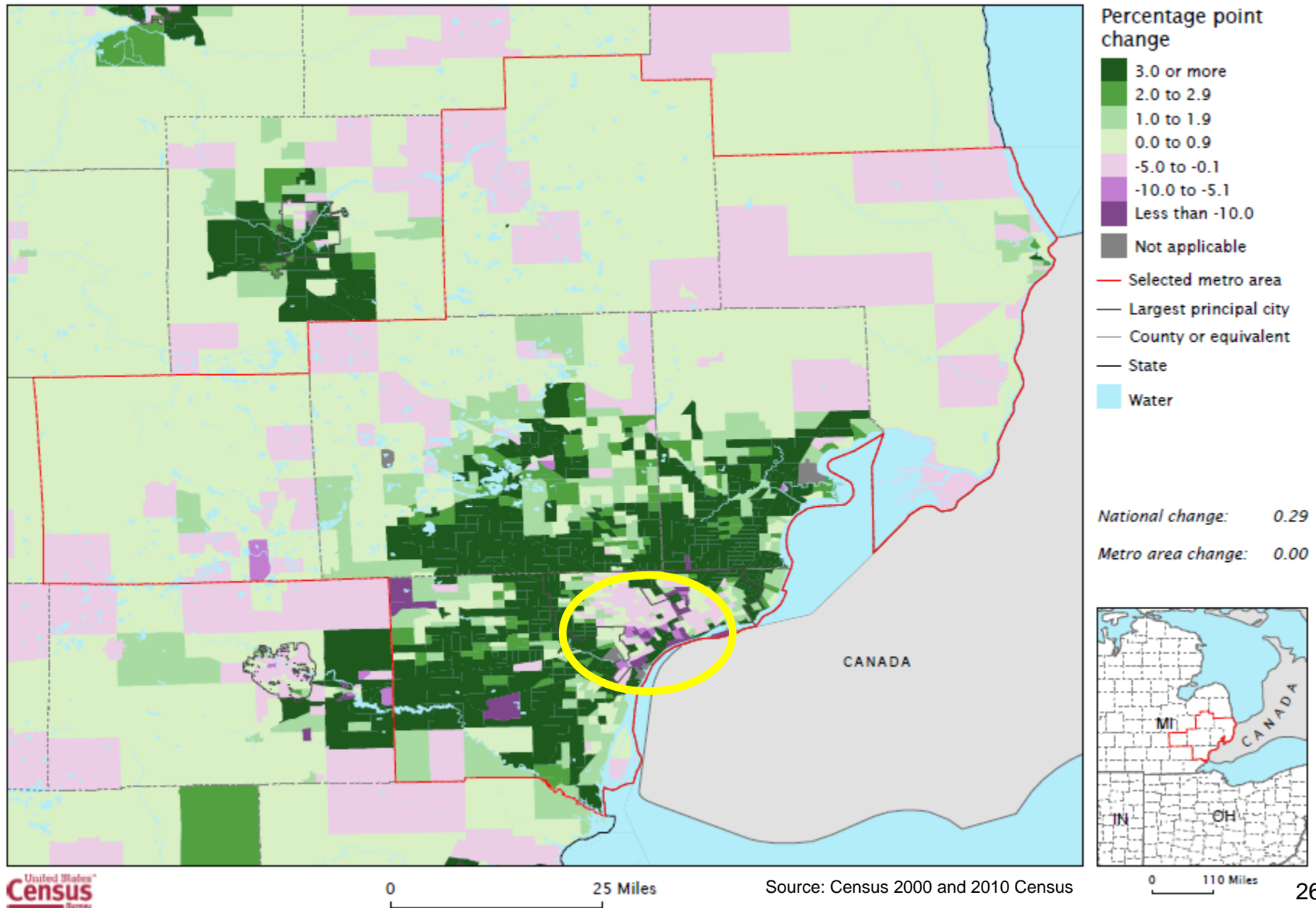
Atlanta- Sandy Springs- Marietta, GA Metro Area

Percentage Point Change in the Black Population by Tract: 2000 to 2010



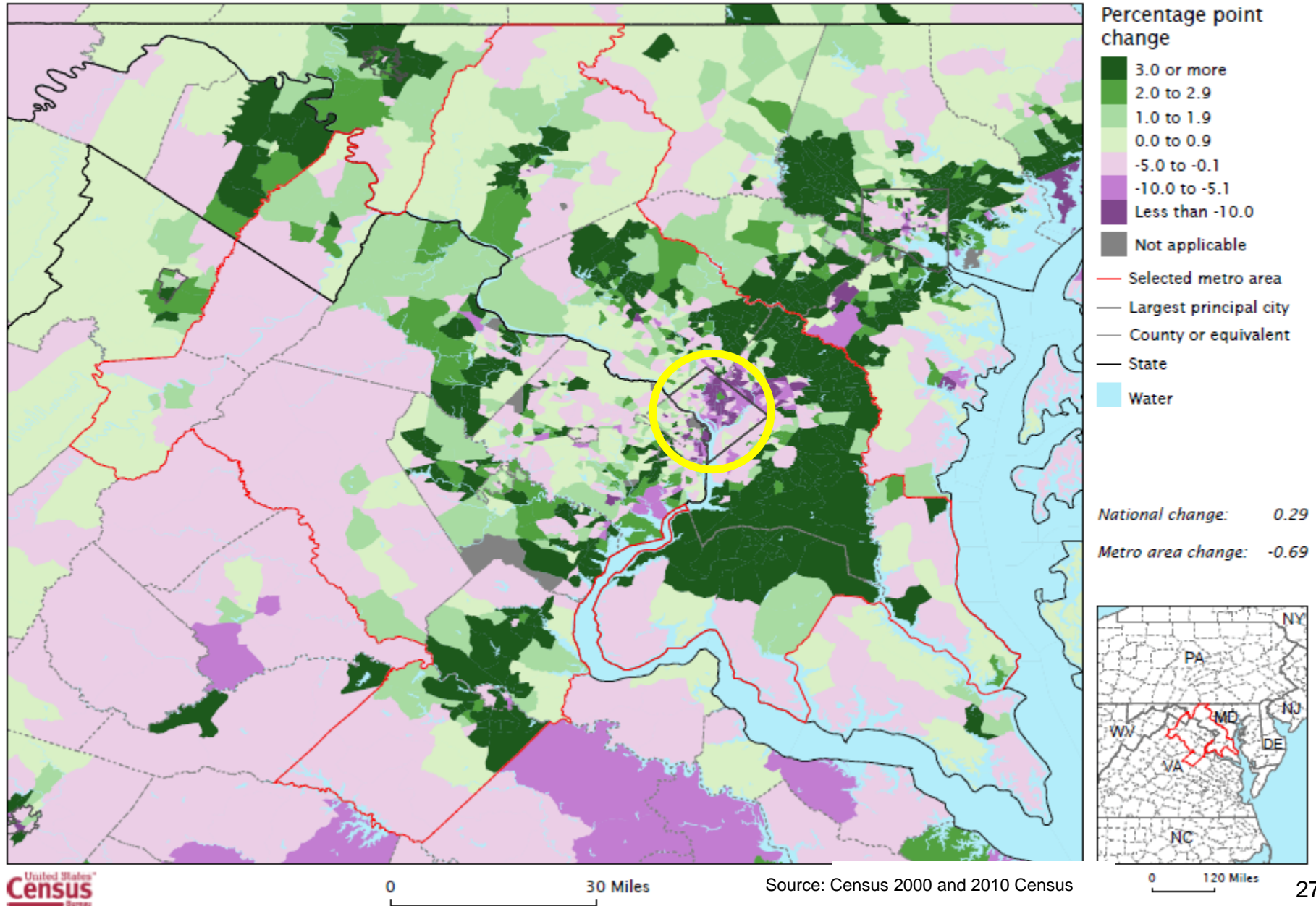
Detroit- Warren- Livonia, MI Metro Area

Percentage Point Change in the Black Population by Tract: 2000 to 2010



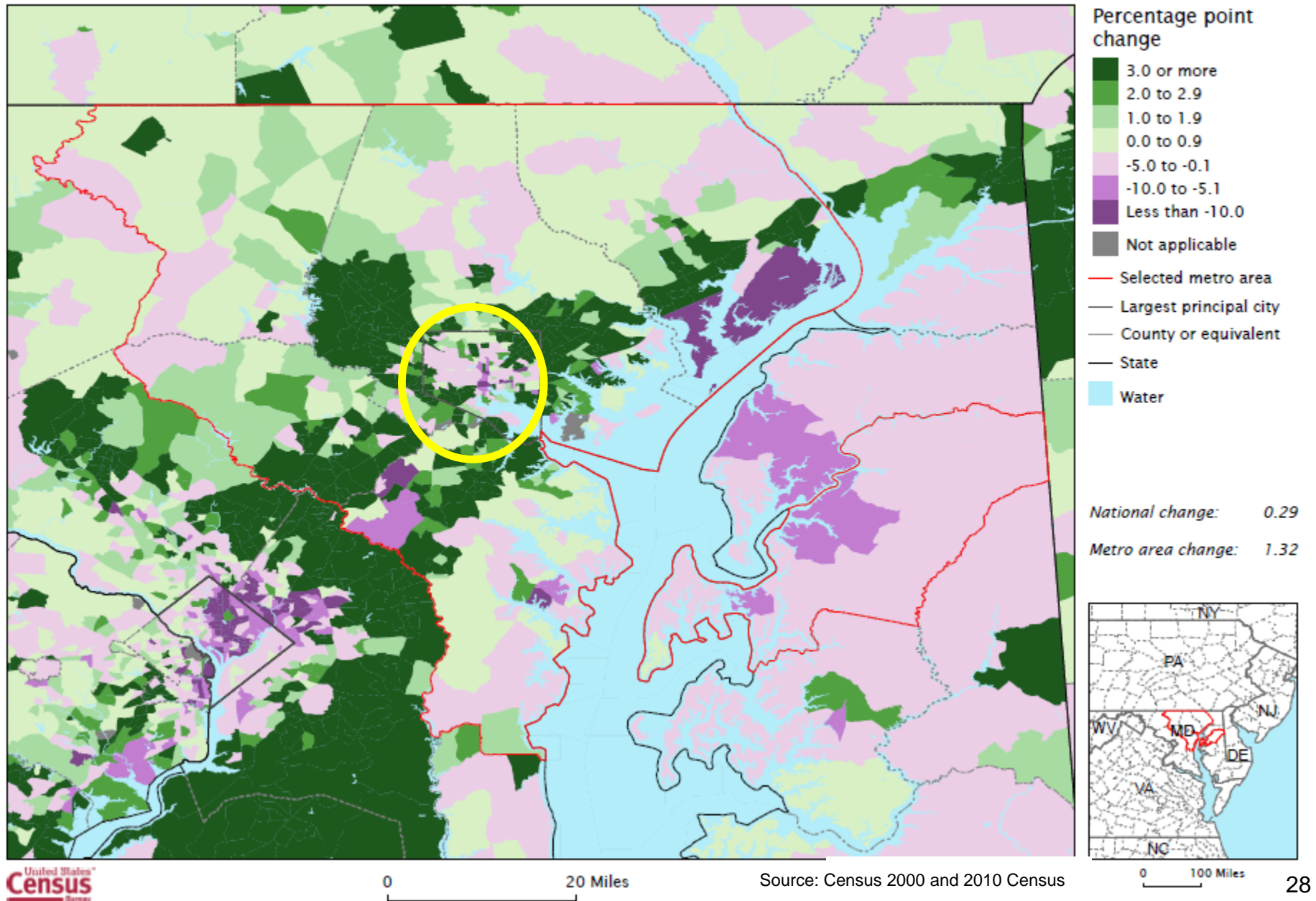
Washington- Arlington- Alexandria, DC- VA- MD- WV Metro Area

Percentage Point Change in the Black Population by Tract: 2000 to 2010



Baltimore- Towson, MD Metro Area

Percentage Point Change in the Black Population by Tract: 2000 to 2010



The Black Population: 2010

www.census.gov/prod/cen2010/briefs/c2010br-06.pdf

The Black Population: 2010

2010 Census Briefs

Issued September 2011

C2010BR-06

INTRODUCTION

This report provides a portrait of the Black population in the United States and discusses its distribution at the national level and at lower levels of geography.^{1,2} It is part of a series that analyzes population and housing data collected from the 2010 Census. The data for this report are based on the *2010 Census Redistricting Data (Public Law 94-171) Summary File*, which was the first 2010 Census data product released with data on race and Hispanic origin and was provided to each state for use in drawing boundaries for legislative districts.³

UNDERSTANDING RACE DATA FROM THE 2010 CENSUS

The 2010 Census used established federal standards to collect and present data on race.

For the 2010 Census, the question on race was asked of individuals living in the United States (see Figure 1). An individual's response to the race question was based upon self-identification. The U.S. Census Bureau collects information on race following the guidance of the U.S. Office of Management and Budget's

Figure 1.
Reproduction of the Question on Race From the 2010 Census

6. What is this person's race? Mark *X* one or more boxes.

White

Black, African Am., or Negro

American Indian or Alaska Native — Print race of individual's parents/guardian *g*

Asian Indian Japanese Native Hawaiian

Chinese Korean Guamanian or Chamorro

Filipino Vietnamese Samoan

Other Asian — Print race for example, Hmong, Laotian, Thai, Pakistani, Cambodian, and so on. *g*

Other Pacific Islander — Print race for example, Fijian, Tongan, and so on. *g*

Some other race — Print race. *g*

Source: U.S. Census Bureau, 2010 Census questionnaire.

(OMB) 1997 Revisions to the Standards for the Classification of Federal Data on Race and Ethnicity.⁴ These federal standards mandate that race and Hispanic origin (ethnicity) are separate and distinct concepts and that when collecting these data via self-identification, two different questions must be used.⁵

⁴ The 1997 Revisions to the Standards for the Classification of Federal Data on Race and Ethnicity, issued by OMB, is available at: www.whitehouse.gov/omb/edreg/1997standards.html.

⁵ The OMB requires federal agencies to use a minimum of two ethnicities: Hispanic or Latino and Not Hispanic or Latino. Hispanic origin can be viewed as the heritage, nationality group, lineage, or country of birth of the person or the person's parents or ancestors before their arrival in the United States. People who identify their origin as Hispanic, Latino, or Spanish may be of any race. "Hispanic or Latino" refers to a person of Cuban, Mexican, Puerto Rican, South or Central American, or other Spanish culture or origin regardless of race.

By
Soreya Kaxlogi,
Tallene D. Johnson,
Elizabeth M. Hoeffel,
and
Malcolm F. Dowsey, Jr.

U.S. Department of Commerce
Economic and Statistics Administration
U.S. CENSUS BUREAU