

UNITED STATES DEPARTMENT OF
COMMERCE
NEWS WASHINGTON, DC 20230

ECONOMICS
AND
STATISTICS
ADMINISTRATION

BUREAU OF THE
CENSUS

Bureau of the Census
For Data - (301) 457-4673
For Questions - Lee Wentela or Derrick Roy
(301) 457-4832 or (301) 457-4814
M3-1(00)-11

For Release 8:30 A.M. EST
December 22, 2000
CB-00-215

ADVANCE REPORT ON DURABLE GOODS MANUFACTURERS' SHIPMENTS AND ORDERS
November 2000

(All figures in text below are in seasonally adjusted current dollars)

● **NEW ORDERS** New orders for manufactured durable goods in November increased \$4.7 billion or 2.3 percent to \$210.9 billion, the Department of Commerce, Bureau of the Census reported today. This follows a 6.5 percent October decrease. Excluding transportation, new orders increased 0.4 percent. Year-to-date, new orders are 7.6 percent above the same period a year ago.

Transportation equipment had the largest increase, \$4.0 billion or 9.1 percent to \$48.1 billion, due to aircraft and parts. Electronic and other electrical equipment increased \$1.7 billion or 4.5 percent to \$40.0 billion, mostly due to electronic components. Industrial machinery and equipment increased \$0.5 billion or 1.1 percent to \$43.9 billion; this is the first increase since July. Primary metals, down four of the last five months, decreased \$0.3 billion or 2.1 percent to \$14.9 billion.

● **SHIPMENTS** Shipments of durable goods in November decreased \$2.6 billion or 1.2 percent to \$207.3 billion, following a 2.0 percent October decrease. Year-to-date, shipments are 5.7 percent above the same period a year ago.

Electronic and other electrical equipment had the largest decrease, \$1.0 billion or 2.5 percent to \$39.8 billion, mostly due to electronic components. This is the largest decrease since April 1998. Industrial machinery and equipment decreased \$0.3 billion or 0.7 percent to \$43.0 billion. Primary metals, down five consecutive months, decreased \$0.2 billion or 1.4 percent to \$15.3 billion. Transportation equipment decreased \$0.2 billion or 0.4 percent to \$45.5 billion.

● **UNFILLED ORDERS** Unfilled orders for durable goods in November increased \$3.6 billion or 0.6 percent to \$562.2 billion, following a 0.7 percent October decrease. Transportation equipment, led by aircraft and parts, had the largest increase, \$2.7 billion or 1.1 percent to \$250.0 billion. Industrial machinery and equipment, led by engines and turbines, increased \$0.8 billion or 0.9 percent to \$93.1 billion; this is the seventeenth consecutive increase. Electronic and other electrical equipment increased \$0.3 billion or 0.3 percent to \$99.8 billion. Primary metals, down twelve of the last thirteen months, decreased \$0.4 billion or 1.2 percent to \$29.9 billion.

● **CAPITAL GOODS INDUSTRIES, DEFENSE** New orders in November increased \$1.7 billion or 25.2 percent to \$8.5 billion. Shipments increased \$0.1 billion or 1.8 percent to \$6.3 billion. Unfilled orders increased \$2.2 billion or 2.0 percent to \$111.4 billion.

● **CAPITAL GOODS INDUSTRIES, NONDEFENSE** New orders in November increased \$3.7 billion or 6.2 percent to \$63.1 billion. Shipments increased \$0.5 billion or 0.8 percent to \$61.9 billion. Unfilled orders, up five of the last six months, increased \$1.2 billion or 0.4 percent to \$280.6 billion. Excluding aircraft and parts, new orders, down four of the last five months, decreased \$0.5 billion or 0.8 percent to \$53.6 billion; shipments decreased \$0.8 billion or 1.5 percent to \$53.3 billion; and unfilled orders, up fourteen of the last fifteen months, increased \$0.3 billion or 0.2 percent to \$131.1 billion.

● **REVISED OCTOBER DATA** Revised seasonally adjusted October figures for all manufacturing industries are: shipments, \$375.7 billion (revised from \$377.7 billion); new orders, \$371.5 billion (revised from \$373.9 billion); unfilled orders, \$583.6 billion (revised from \$584.0 billion); and total inventories, \$492.0 billion (revised from \$491.9 billion).

Our internet site address is: <http://www.census.gov/indicator/www/m3>

Table 1. DURABLE GOODS MANUFACTURERS' SHIPMENTS AND ORDERS
(Millions of Dollars)

Item	Seasonally Adjusted						Not Seasonally Adjusted ¹			
	Monthly			Percent Change			Monthly			Percent Change Nov 00/99
	Nov 2000 ²	Oct 2000 ¹	Sep 2000	Oct - Nov ²	Sep - Oct ¹	Aug - Sep	Nov 2000 ²	Oct 2000 ¹	Nov 1999	
DURABLE GOODS										
Total:										
Shipments.....	207,340	209,961	214,165	-1.2	-2.0	+0.1	203,849	213,389	203,877	0.0
New Orders.....	210,943	206,214	220,651	+2.3	-6.5	+2.2	202,769	211,595	200,811	+1.0
Unfilled Orders.....	562,231	558,628	562,375	+0.6	-0.7	+1.2	556,380	557,460	496,913	+12.0
Excluding defense:										
Shipments.....	200,998	203,731	207,787	-1.3	-2.0	0.0	197,105	207,177	196,144	+0.5
New Orders.....	202,411	199,399	214,614	+1.5	-7.1	+2.9	194,487	205,550	194,462	0.0
Unfilled Orders.....	450,786	449,373	453,705	+0.3	-1.0	+1.5	447,282	449,900	407,410	+9.8
With unfilled orders:										
Shipments.....	174,693	176,282	179,044	-0.9	-1.5	-0.5	172,385	177,153	168,838	+2.1
New Orders.....	178,296	172,535	185,530	+3.3	-7.0	+2.1	171,305	175,359	165,772	+3.3
Primary metals:										
Shipments.....	15,265	15,484	15,731	-1.4	-1.6	-0.7	14,786	15,783	15,167	-2.5
New Orders.....	14,896	15,212	15,756	-2.1	-3.5	+2.1	14,353	14,902	15,172	-5.4
Unfilled Orders.....	29,942	30,311	30,583	-1.2	-0.9	+0.1	28,442	28,875	30,709	-7.4
Industrial machinery and equipment:										
Shipments.....	43,027	43,347	43,276	-0.7	+0.2	-0.8	39,475	41,976	36,757	+7.4
New Orders.....	43,859	43,380	43,387	+1.1	0.0	-4.9	40,980	42,471	37,631	+8.9
Unfilled Orders.....	93,077	92,245	92,212	+0.9	0.0	+0.1	93,372	91,867	81,827	+14.1
Electronic and other electrical equipment:										
Shipments.....	39,755	40,763	41,585	-2.5	-2.0	+1.0	40,293	40,190	36,912	+9.2
New Orders.....	40,032	38,305	43,232	+4.5	-11.4	+8.5	36,853	41,276	38,015	-3.1
Unfilled Orders.....	99,823	99,546	102,004	+0.3	-2.4	+1.6	98,827	102,267	80,809	+22.3
Transportation equipment:										
Shipments.....	45,462	45,649	48,646	-0.4	-6.2	+2.1	46,033	48,497	49,461	-6.9
New Orders.....	48,124	44,111	53,309	+9.1	-17.3	+7.8	47,747	45,909	45,416	+5.1
Unfilled Orders.....	249,986	247,324	248,862	+1.1	-0.6	+1.9	247,696	245,982	219,708	+12.7
CAPITAL GOODS INDUSTRIES³										
Total:										
Shipments.....	68,202	67,620	69,204	+0.9	-2.3	+0.2	65,455	64,651	61,022	+7.3
New Orders.....	71,626	66,199	74,531	+8.2	-11.2	+3.1	68,799	62,927	59,192	+16.2
Unfilled Orders.....	392,069	388,645	390,066	+0.9	-0.4	+1.4	389,834	386,490	340,687	+14.4
Nondefense:										
Shipments.....	61,860	61,390	62,826	+0.8	-2.3	0.0	58,711	58,439	53,289	+10.2
New Orders.....	63,094	59,384	68,494	+6.2	-13.3	+5.4	60,517	56,882	52,843	+14.5
Unfilled Orders.....	280,624	279,390	281,396	+0.4	-0.7	+2.1	280,736	278,930	251,184	+11.8
Excluding aircraft and parts:										
Shipments.....	53,297	54,096	54,247	-1.5	-0.3	+0.5	49,922	51,748	46,014	+8.5
New Orders.....	53,606	54,065	55,639	-0.8	-2.8	+1.5	50,803	52,166	47,168	+7.7
Unfilled Orders.....	131,055	130,746	130,777	+0.2	0.0	+1.1	131,167	130,286	112,869	+16.2
Defense:										
Shipments.....	6,342	6,230	6,378	+1.8	-2.3	+2.0	6,744	6,212	7,733	-12.8
New Orders.....	8,532	6,815	6,037	+25.2	+12.9	-17.4	8,282	6,045	6,349	+30.4
Unfilled Orders.....	111,445	109,255	108,670	+2.0	+0.5	-0.3	109,098	107,560	89,503	+21.9

(NA) Not Available¹ Revised¹ Shipments and new orders are the totals for the period and are adjusted for trading-day and calendar-month variations; unfilled orders are as of the end of the period and are not adjusted for trading-day or calendar-month variations.² Based on advance sample. Estimates of manufacturers' shipments, inventories, and orders are subject to survey error and revision. One major component of survey error is nonsampling error, which includes errors of coverage, response and nonreporting. Since the survey panel is not a probability sample, estimates of sampling error cannot be calculated. Further details on survey design, methodology, and data limitations are contained in our most recent annual benchmark publication, Current Industrial Reports: M3-1(197). "Manufacturers' Shipments, Inventories, and Orders: 1987-1997."³ The Capital Goods Industries include Nondefense : ordnance and accessories, steam engines and turbines, internal combustion engines, construction mining and material handling equipment, metalworking machinery, special industry machinery, general industrial machinery, computer and office equipment, refrigeration, heating and service industry machinery, electrical transmission and distribution equipment, electrical industrial apparatus, communication equipment, complete aircraft, missiles, and space vehicles, aircraft missiles, and space vehicle engines and parts, ships and tank components, railroad equipment, and search and navigation equipment.
Defense Capital Goods include : ordnance, communication equipment, aircraft, missiles, space vehicles, and parts, ships, tanks and tank components, search and navigation equipment.

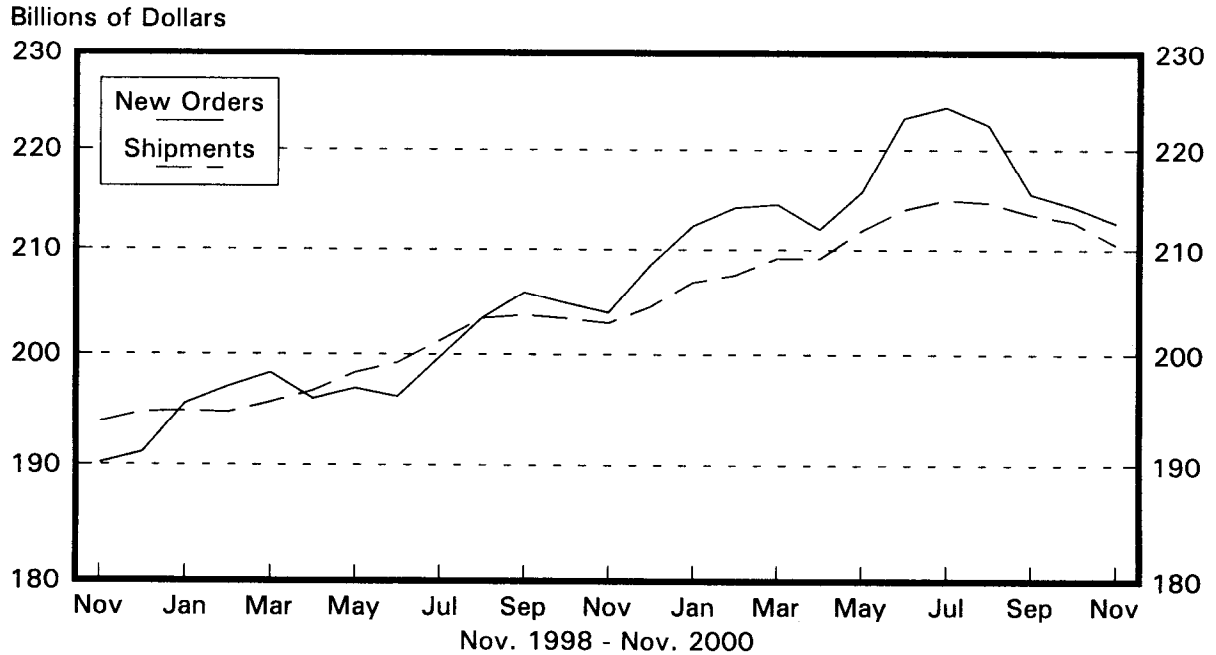
Table 2. AVERAGE REVISIONS TO PREVIOUSLY PUBLISHED MONTHLY PERCENT CHANGES
(Based on Seasonally Adjusted Data)

Industry	Shipments			New Orders			Unfilled Orders		
	Year ago	Nov.	Nov. 1999-	Year ago	Nov.	Nov. 1999-	Year ago	Nov.	Nov. 1999-
	Nov. 1999	1995-1999	Oct. 2000	Nov. 1999	1995-1999	Oct. 2000	Nov. 1999	1995-1999	Oct. 2000
Durable Goods.....	0.2	0.3	0.5	0.0	0.7	0.8	0.1	0.1	0.2
Primary metals.....	0.2	0.5	0.3	1.5	0.8	1.0	0.6	0.5	0.3
Industrial machinery and equipment...	0.6	0.4	0.9	1.2	0.9	1.3	0.3	0.2	0.4
Electronic and other electrical equipment.....	0.1	0.6	0.6	1.0	2.8	1.9	0.5	0.6	0.7
Transportation equipment.....	0.3	1.0	1.0	2.0	1.7	2.3	0.5	0.2	0.3
Nondefense capital goods.....	0.2	0.8	0.9	0.1	0.9	1.9	0.0	0.1	0.2
Defense capital goods.....	0.6	1.4	1.4	5.8	6.9	8.7	0.7	0.3	0.5

The monthly averages are the simple averages of the

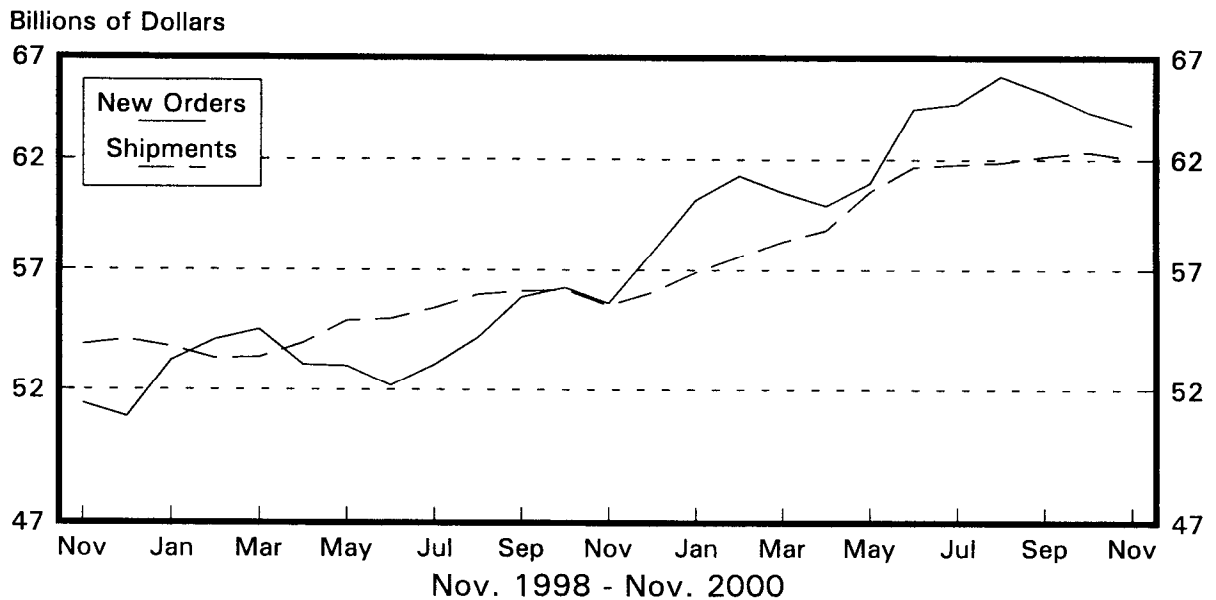
Total Durable Goods

New Orders and Shipments
Three Month Moving Averages



Nondefense Capital Goods

New Orders and Shipments
Three Month Moving Averages



Note: All Charts based on seasonally adjusted current dollars.

U.S. Department of Commerce
Economics and Statistics Administration
U.S. CENSUS BUREAU
Washington, DC 20233

FIRST-CLASS MAIL
POSTAGE & FEES PA
U.S. Census Bureau
Permit No. G-58

OFFICIAL BUSINESS
Penalty for Private Use, \$300

Manufacturers' Shipments, Inventories, and Orders (M3) Survey

RELEASE DATES FOR 2000/2001		
REPORT COVERING	ADVANCE REPORT (8:30 a.m. release time)	REGULAR REPORT (10:00 a.m. release time)
November 2000		Jan. 4, 2001
December 2000	Jan. 26, 2001	Feb. 2, 2001
January 2001	Feb. 27, 2001	Mar. 6, 2001
February 2001	Mar. 27, 2001	Apr. 3, 2001
March 2001	Apr. 25, 2001	May 2, 2001
April 2001	May 25, 2001 @ 10:00	Jun. 5, 2001
May 2001	Jun. 26, 2001	Jul. 3, 2001
June 2001	Jul. 26, 2001	Aug. 2, 2001
July 2001	Aug. 24, 2001	Aug. 31, 2001
August 2001	Sep. 27, 2001	Oct. 4, 2001
September 2001	Oct. 25, 2001	Nov. 2, 2001
October 2001	Nov. 29, 2001	Dec. 6, 2001
November 2001	Dec. 28, 2001	