

UNITED STATES DEPARTMENT OF
COMMERCE
NEWS
WASHINGTON, DC 20230

ECONOMICS
AND
STATISTICS
ADMINISTRATION

BUREAU OF THE
CENSUS

Bureau of the Census
For Data - (301) 457-4673
For Questions - Lee Wentela or Derrick Roy
(301) 457-4832 or (301) 457-4814
M3-1(00)-12

For Release 8:30 A.M. EST
January 26, 2001
CB-01-18

ADVANCE REPORT ON DURABLE GOODS MANUFACTURERS' SHIPMENTS AND ORDERS
December 2000

(All figures in text below are in seasonally adjusted current dollars)

● **NEW ORDERS** New orders for manufactured durable goods in December increased \$4.6 billion or 2.2 percent to \$214.3 billion, the Department of Commerce, Bureau of the Census reported today. This follows a 1.8 percent November increase. Excluding transportation, new orders decreased 1.4 percent. New orders for 2000 are 6.7 percent above 1999.

Transportation equipment had the largest increase, \$6.9 billion or 14.6 percent to \$54.2 billion, due to aircraft and parts. Electronic and other electrical equipment increased \$1.0 billion or 2.4 percent to \$41.7 billion, due to electronic components. Industrial machinery and equipment, down five consecutive months, decreased \$2.3 billion or 5.3 percent to \$40.9 billion. Primary metals, down three consecutive months, decreased \$0.5 billion or 3.5 percent to \$14.3 billion; this is the largest decrease since October 1998.

● **SHIPMENTS** Shipments of durable goods in December decreased \$1.1 billion or 0.5 percent to \$206.5 billion, following a 1.1 percent November decrease. This is the third consecutive decrease. Shipments for 2000 are 5.2 percent above 1999.

Industrial machinery and equipment had the largest decrease, \$1.1 billion or 2.5 percent to \$41.8 billion, mostly due to computer and office equipment. Transportation equipment, down three consecutive months, decreased \$0.6 billion or 1.3 percent to \$44.8 billion. Primary metals, down six consecutive months, decreased \$0.5 billion or 3.5 percent to \$14.6 billion; this is the largest decrease since June 1996. Electronic and other electrical equipment increased \$1.4 billion or 3.5 percent to \$42.0 billion.

● **UNFILLED ORDERS** Unfilled orders for durable goods in December increased \$7.8 billion or 1.4 percent to \$568.5 billion, following a 0.4 percent November increase. Transportation equipment had the largest increase, \$9.4 billion or 3.8 percent to \$258.6 billion, due to aircraft and parts. Industrial machinery and equipment, led by computer and office equipment, decreased \$0.9 billion or 1.0 percent to \$91.5 billion; this is the largest decline since June 1999. Electronic and other electrical equipment decreased \$0.3 billion or 0.3 percent to \$99.3 billion. Primary metals, down thirteen of the last fourteen months, decreased \$0.3 billion or 1.0 percent to \$29.7 billion.

● **CAPITAL GOODS INDUSTRIES, DEFENSE** New orders in December decreased \$2.2 billion or 25.9 percent to \$6.2 billion. Shipments increased \$0.2 billion or 2.7 percent to \$6.7 billion. Unfilled orders decreased \$0.5 billion or 0.4 percent to \$110.6 billion.

● **CAPITAL GOODS INDUSTRIES, NONDEFENSE** New orders in December increased \$7.2 billion or 11.6 percent to \$69.2 billion. Shipments decreased \$0.7 billion or 1.2 percent to \$61.0 billion. Unfilled orders, up six of the last seven months, increased \$8.2 billion or 2.9 percent to \$287.9 billion. Excluding aircraft and parts, new orders, down five of the last six months, decreased \$1.6 billion or 3.0 percent to \$51.2 billion; shipments, down three consecutive months, decreased \$0.1 billion or 0.3 percent to \$53.1 billion; and unfilled orders, down three consecutive months following thirteen consecutive increases, decreased \$1.9 billion or 1.5 percent to \$128.3 billion.

● **REVISED NOVEMBER DATA** Revised seasonally adjusted November figures for all manufacturing industries are: shipments, \$373.9 billion (revised from \$374.1 billion); new orders, \$376.2 billion (revised from \$377.6 billion); unfilled orders, \$585.9 billion (revised from \$587.1 billion); and total inventories, \$494.2 billion (revised from \$494.5 billion).

Our internet site address is: <http://www.census.gov/indicator/www/m3>

Table 1. DURABLE GOODS MANUFACTURERS' SHIPMENTS AND ORDERS
(Millions of Dollars)

Item	Seasonally Adjusted						Not Seasonally Adjusted ¹			
	Monthly			Percent Change			Monthly			Percent Change Dec 00/99
	Dec 2000 ²	Nov 2000 ¹	Oct 2000	Nov - Dec ²	Oct - Nov ¹	Sep - Oct	Dec 2000 ²	Nov 2000 ¹	Dec 1999	
DURABLE GOODS										
Total:										
Shipments.....	206,517	207,599	209,833	-0.5	-1.1	-2.0	209,566	204,894	209,219	+0.2
New Orders.....	214,328	209,720	206,060	+2.2	+1.8	-6.6	214,583	203,355	220,085	-2.5
Unfilled Orders.....	568,534	560,723	558,602	+1.4	+0.4	-0.7	560,858	555,841	507,779	+10.5
Excluding defense:										
Shipments.....	199,864	201,124	203,596	-0.6	-1.2	-2.0	201,668	198,054	201,689	0.0
New Orders.....	208,153	201,387	199,225	+3.4	+1.1	-7.2	205,595	195,045	208,418	-1.4
Unfilled Orders.....	457,886	449,597	449,334	+1.8	+0.1	-1.0	450,732	446,805	414,139	+8.8
With unfilled orders:										
Shipments.....	174,532	175,024	176,137	-0.3	-0.6	-1.6	181,669	173,328	177,151	+2.6
New Orders.....	182,343	177,145	172,364	+2.9	+2.8	-7.1	186,686	171,789	188,017	-0.7
Primary metals:										
Shipments.....	14,611	15,140	15,477	-3.5	-2.2	-1.6	13,273	14,716	14,447	-8.1
New Orders.....	14,305	14,825	15,225	-3.5	-2.6	-3.4	13,614	14,404	14,859	-8.4
Unfilled Orders.....	29,710	30,016	30,331	-1.0	-1.0	-0.8	28,907	28,566	31,121	-7.1
Industrial machinery and equipment:										
Shipments.....	41,850	42,941	43,351	-2.5	-0.9	+0.2	44,872	39,681	42,025	+6.8
New Orders.....	40,920	43,192	43,313	-5.3	-0.3	-0.2	42,937	40,806	41,425	+3.6
Unfilled Orders.....	91,495	92,425	92,174	-1.0	+0.3	0.0	90,994	92,929	81,227	+12.0
Electronic and other electrical equipment:										
Shipments.....	41,987	40,582	40,651	+3.5	-0.2	-2.2	47,090	41,157	40,817	+15.4
New Orders.....	41,657	40,682	38,132	+2.4	+6.7	-11.8	43,410	37,944	43,695	-0.7
Unfilled Orders.....	99,255	99,585	99,485	-0.3	+0.1	-2.5	95,277	98,957	83,687	+13.8
Transportation equipment:										
Shipments.....	44,843	45,418	45,655	-1.3	-0.5	-6.1	43,081	46,215	48,564	-11.3
New Orders.....	54,205	47,319	44,100	+14.6	+7.3	-17.3	53,420	47,326	55,238	-3.3
Unfilled Orders.....	258,570	249,208	247,307	+3.8	+0.8	-0.6	257,424	247,085	226,382	+13.7
CAPITAL GOODS INDUSTRIES³										
Total:										
Shipments.....	67,652	68,203	67,641	-0.8	+0.8	-2.3	78,420	65,765	73,895	+6.1
New Orders.....	75,423	70,385	66,167	+7.2	+6.4	-11.2	86,636	68,341	83,443	+3.8
Unfilled Orders.....	398,545	390,774	388,592	+2.0	+0.6	-0.4	397,219	389,003	350,235	+13.4
Nondefense:										
Shipments.....	60,999	61,728	61,404	-1.2	+0.5	-2.3	70,522	58,925	66,365	+6.3
New Orders.....	69,248	62,052	59,332	+11.6	+4.6	-13.4	77,648	60,031	71,776	+8.2
Unfilled Orders.....	287,897	279,648	279,324	+2.9	+0.1	-0.7	287,093	279,967	256,595	+11.9
Excluding aircraft and parts:										
Shipments.....	53,106	53,247	54,111	-0.3	-1.6	-0.3	61,123	50,151	55,997	+9.2
New Orders.....	51,214	52,774	54,021	-3.0	-2.3	-2.9	58,108	50,460	58,346	-0.4
Unfilled Orders.....	128,322	130,214	130,687	-1.5	-0.4	-0.1	127,518	130,533	115,218	+10.7
Defense:										
Shipments.....	6,653	6,475	6,237	+2.7	+3.8	-2.2	7,898	6,840	7,530	+4.9
New Orders.....	6,175	8,333	6,835	-25.9	+21.9	+13.2	8,988	8,310	11,667	-23.0
Unfilled Orders.....	110,648	111,126	109,268	-0.4	+1.7	+0.6	110,126	109,036	93,640	+17.6

(NA) Not Available ¹ Revised

¹ Shipments and new orders are the totals for the period and are adjusted for trading-day and calendar-month variations; unfilled orders are as of the end of the period and are not adjusted for trading-day or calendar-month variations.

² Based on advance sample. Estimates of manufacturers' shipments, inventories, and orders are subject to survey error and revision. One major component of survey error is nonsampling error, which includes errors of coverage, response and nonreporting. Since the survey panel is not a probability sample, estimates of sampling error cannot be calculated. Further details on survey design, methodology, and data limitations are contained in our most recent annual benchmark publication, Current Industrial Reports: M3-1(97), "Manufacturers' Shipments, Inventories, and Orders: 1987-1997."

³ The Capital Goods Industries include Nondefense : ordnance and accessories, steam engines and turbines, internal combustion engines, construction mining and material handling equipment, metalworking machinery, special industry machinery, general industrial machinery, computer and office equipment, refrigeration, heating and service industry machinery, electrical transmission and distribution equipment, electrical industrial apparatus, communication equipment, complete aircraft, missiles, and space vehicles, aircraft missiles, and space vehicle engines and parts, ships and tank components, railroad equipment, and search and navigation equipment.
Defense Capital Goods include : ordnance, communication equipment, aircraft, missiles, space vehicles, and parts, ships, tanks and tank components, search and navigation equipment.

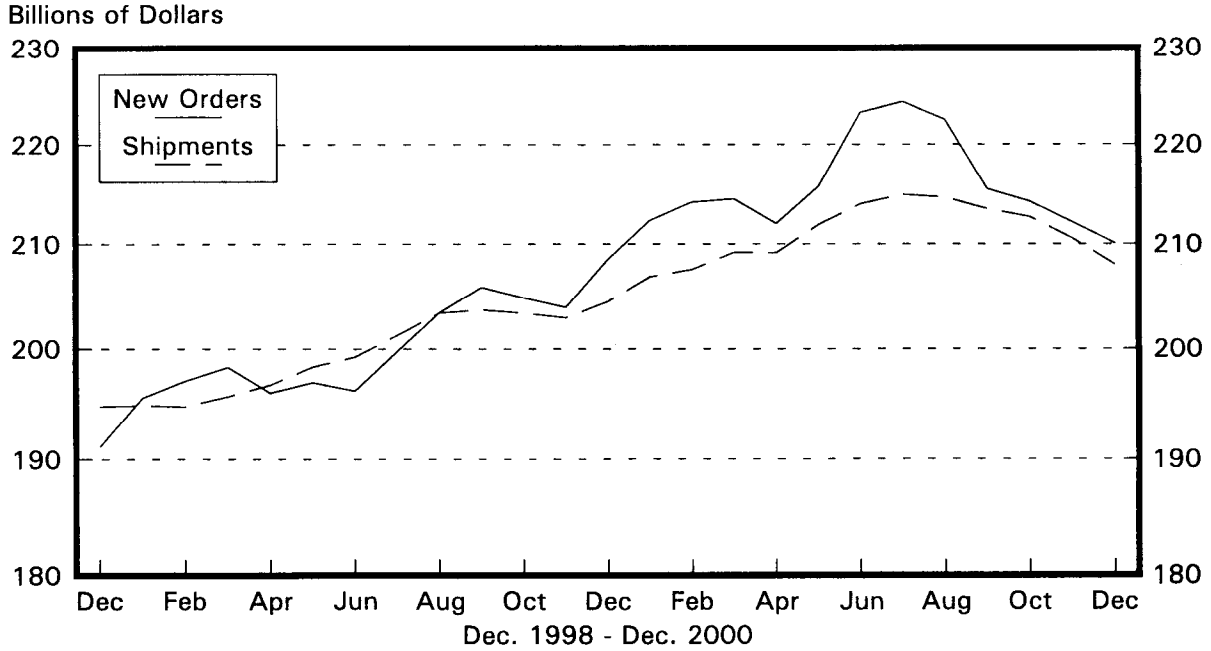
Table 2. AVERAGE REVISIONS TO PREVIOUSLY PUBLISHED MONTHLY PERCENT CHANGES
(Based on Seasonally Adjusted Data)

Industry	Shipments			New Orders			Unfilled Orders		
	Year ago	Dec.	Dec. 1999-	Year ago	Dec.	Dec. 1999-	Year ago	Dec.	Dec. 1999-
	Dec. 1999	1995-1999	Nov. 2000	Dec. 1999	1995-1999	Nov. 2000	Dec. 1999	1995-1999	Nov. 2000
Durable Goods.....	0.3	0.4	0.5	2.4	1.5	0.9	0.8	0.5	0.2
Primary metals.....	0.6	0.4	0.4	0.3	0.9	0.9	0.2	0.5	0.3
Industrial machinery and equipment...	0.6	0.6	0.9	2.6	1.0	1.2	1.1	0.5	0.4
Electronic and other electrical equipment.....	1.1	1.1	0.8	0.9	2.6	2.1	0.1	0.5	0.7
Transportation equipment.....	1.0	0.6	0.9	7.7	4.5	2.2	1.3	0.8	0.3
Nondefense capital goods.....	0.9	0.6	0.9	6.6	3.0	2.0	1.2	0.6	0.2
Defense capital goods.....	2.4	3.3	1.5	21.0	14.1	8.5	1.4	0.4	0.5

NA = Not Available ¹ Revised ² The monthly averages are the simple averages of the

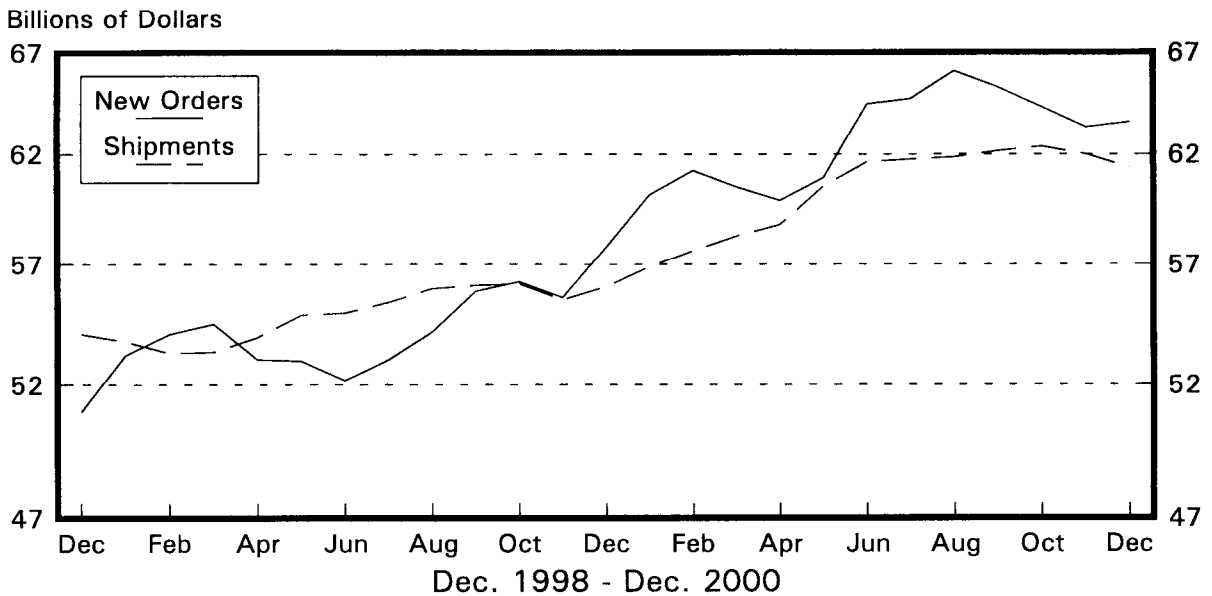
Total Durable Goods

New Orders and Shipments
Three Month Moving Averages



Nondefense Capital Goods

New Orders and Shipments
Three Month Moving Averages



Note: All Charts based on seasonally adjusted current dollars.