

UNITED STATES DEPARTMENT OF
COMMERCE
NEWS
WASHINGTON, DC 20230

ECONOMICS
AND
STATISTICS
ADMINISTRATION

BUREAU OF THE
CENSUS

Bureau of the Census
For Data - (301) 457-4673
For Questions - Lee Wentela or Derrick Roy
(301) 457-4832 or (301) 457-4814
M3-1(00)-04

For Release 8:30 A.M. EDT
May 26, 2000
CB00-87

ADVANCE REPORT ON DURABLE GOODS MANUFACTURERS' SHIPMENTS AND ORDERS
April 2000

(All figures in text below are in seasonally adjusted current dollars)

● **NEW ORDERS** New orders for manufactured durable goods in April decreased \$14.1 billion or 6.4 percent to \$205.6 billion, the Department of Commerce, Bureau of the Census reported today. This follows a 4.5 percent March increase and is the largest decrease since December 1991. Excluding transportation, new orders decreased 6.4 percent. Year-to-date, new orders are 7.6 percent above the same period a year ago.

Electronic and other electrical equipment had the largest decrease, \$9.0 billion or 20.1 percent to \$35.7 billion, mostly due to electronic components. This is the largest decrease on record. Transportation equipment decreased \$3.2 billion or 6.7 percent to \$45.5 billion; all components decreased, led by motor vehicles and parts. Primary metals decreased \$0.3 billion or 2.1 percent to \$15.5 billion. This is the largest decrease since January 1999. Industrial machinery and equipment increased \$0.9 billion or 2.2 percent to \$43.2 billion.

● **SHIPMENTS** Shipments of durable goods in April decreased \$1.6 billion or 0.8 percent to \$210.0 billion, following a 2.5 percent March increase. Year-to-date, shipments are 6.8 percent above the same period a year ago.

Transportation equipment had the largest decrease, \$1.8 billion or 3.8 percent to \$47.0 billion; decreases in motor vehicles and parts and railroad equipment more than offset an increase in aircraft and parts. Primary metals decreased \$0.2 billion or 1.6 percent to \$15.8 billion. This is the largest decrease since April 1999. Electronic and other electrical equipment decreased 0.1 percent to \$38.7 billion. Industrial machinery and equipment, led by computer and office equipment, increased \$1.4 billion or 3.4 percent to \$42.7 billion.

● **UNFILLED ORDERS** Unfilled orders for durable goods in April decreased \$4.4 billion or 0.8 percent to \$524.4 billion, following a 1.6 percent March increase. This is the first decrease since June 1999. Electronic and other electrical equipment had the largest decrease, \$3.0 billion or 3.2 percent to \$90.8 billion, due to electronic components. This is the largest decrease since July 1997. Transportation equipment, down twenty of the last twenty-four months, decreased \$1.5 billion or 0.7 percent to \$228.3 billion. Primary metals, down six consecutive months, decreased \$0.2 billion or 0.8 percent to \$31.3 billion. Industrial machinery and equipment, up ten consecutive months, increased \$0.5 billion or 0.6 percent to \$85.6 billion.

● **CAPITAL GOODS INDUSTRIES, DEFENSE** New orders in April decreased \$1.3 billion or 20.0 percent to \$5.1 billion. This is the fourth consecutive decrease. Shipments, down four of the last five months, decreased \$0.3 billion or 5.1 percent to \$6.3 billion. Unfilled orders decreased \$1.2 billion or 1.3 percent to \$93.6 billion. This is the largest decrease since August 1999.

● **CAPITAL GOODS INDUSTRIES, NONDEFENSE** New orders in April increased \$0.3 billion or 0.5 percent to \$60.9 billion. This is the fourth increase in the last five months. Shipments, up four of the last five months, increased \$1.6 billion or 2.7 percent to \$60.2 billion. Unfilled orders, up five consecutive months, increased \$0.7 billion or 0.3 percent to \$264.7 billion. Excluding aircraft and parts, new orders increased \$0.6 billion or 1.1 percent to \$53.8 billion; shipments increased \$0.4 billion or 0.7 percent to \$52.5 billion; and unfilled orders, up eight consecutive months, increased \$1.3 billion or 1.1 percent to \$122.1 billion.

● **REVISED MARCH DATA** Revised seasonally adjusted March figures for all manufacturing industries are: shipments, \$377.4 billion (revised from \$377.1 billion); new orders, \$385.3 billion (revised from \$383.2 billion); unfilled orders, \$554.5 billion (revised from \$552.7 billion); and total inventories, \$476.3 billion (revised from \$476.2 billion).

Our internet site address is: <http://www.census.gov/indicator/www/m3>

Table 1. **DURABLE GOODS MANUFACTURERS' SHIPMENTS AND ORDERS**
(Millions of dollars)

Item	Seasonally adjusted						Not seasonally adjusted ¹			
	Monthly			Percent Change			Monthly			Percent change Apr.00/99
	Apr. 2000 ²	Mar. 2000 ²	Feb. 2000	Mar.- Apr. ²	Feb.- Mar. ²	Jan.- Feb.	Apr. 2000 ²	Mar. 2000 ²	Apr. 1999	
DURABLE GOODS										
Total :										
Shipments	210,021	211,645	206,555	-0.8	+2.5	-1.4	206,157	231,451	194,694	+5.9
New orders	205,584	219,719	210,255	-6.4	+4.5	-1.7	205,548	237,310	196,132	+4.8
Unfilled orders	524,412	528,849	520,775	-0.8	+1.6	+0.7	530,816	531,425	506,344	+4.8
Excluding defense :										
Shipments	203,721	205,003	200,550	-0.6	+2.2	-1.3	200,243	224,217	188,539	+6.2
New orders	200,470	213,328	203,567	-6.0	+4.8	-1.7	201,000	229,507	191,089	+5.2
Unfilled orders	430,821	434,072	425,747	-0.7	+2.0	+0.7	435,059	434,302	408,606	+6.5
With unfilled orders :										
Shipments	174,429	174,303	170,606	+0.1	+2.2	-1.2	168,627	190,346	157,582	+7.0
New orders	169,992	182,377	174,306	-6.8	+4.6	-1.6	168,018	196,205	159,020	+5.7
Primary metals :										
Shipments	15,784	16,033	15,969	-1.6	+0.4	-0.8	16,261	16,923	14,731	+10.4
New orders	15,540	15,879	15,824	-2.1	+0.3	-1.5	15,738	16,964	15,068	+4.4
Unfilled orders	31,343	31,587	31,741	-0.8	-0.5	-0.5	32,529	33,052	31,092	+4.6
Industrial machinery and equipment:										
Shipments	42,686	41,298	40,193	+3.4	+2.7	-2.7	41,087	48,893	35,872	+14.5
New orders	43,197	42,286	41,365	+2.2	+2.2	-3.7	41,481	48,934	37,830	+9.7
Unfilled orders	85,595	85,084	84,096	+0.6	+1.2	+1.4	85,756	85,362	78,976	+8.6
Electronic and other electrical equipment :										
Shipments	38,735	38,772	37,987	-0.1	+2.1	-0.1	35,651	41,976	30,994	+15.0
New orders	35,699	44,706	41,056	-20.1	+8.9	+9.9	36,203	45,842	35,334	+2.5
Unfilled orders	90,762	93,798	87,864	-3.2	+6.8	+3.6	93,180	92,628	67,008	+39.1
Transportation equipment :										
Shipments	46,995	48,827	46,845	-3.8	+4.2	-3.7	48,382	53,697	49,661	-2.6
New orders	45,462	48,703	46,609	-6.7	+4.5	-9.4	46,843	54,245	43,580	+7.5
Unfilled orders	228,343	229,876	230,000	-0.7	-0.1	-0.1	230,071	231,610	240,254	-4.2
CAPITAL GOODS INDUSTRIES³										
Total :										
Shipments	66,507	65,241	63,332	+1.9	+3.0	-2.7	61,791	74,870	56,908	+8.6
New orders	66,039	67,028	64,403	-1.5	+4.1	-8.2	61,210	76,595	53,550	+14.3
Unfilled orders	358,243	358,711	356,924	-0.1	+0.5	+0.3	360,832	361,413	356,651	+1.2
Nondefense :										
Shipments	60,207	58,599	57,327	+2.7	+2.2	-2.6	55,877	67,636	50,753	+10.1
New orders	60,925	60,637	57,715	+0.5	+5.1	-8.9	56,662	68,792	48,507	+16.8
Unfilled orders	264,652	263,934	261,896	+0.3	+0.8	+0.1	265,075	264,290	258,913	+2.4
Excluding aircraft and parts :										
Shipments	52,486	52,098	50,097	+0.7	+4.0	-2.0	48,193	60,610	42,119	+14.4
New orders	53,806	53,213	50,977	+1.1	+4.4	-6.1	49,580	60,843	43,500	+14.0
Unfilled orders	122,101	120,781	119,666	+1.1	+0.9	+0.7	122,524	121,137	112,432	+9.0
Defense :										
Shipments	6,300	6,642	6,005	-5.1	+10.6	-4.0	5,914	7,234	6,155	-3.9
New orders	5,114	6,391	6,688	-20.0	-4.4	-1.8	4,548	7,803	5,043	-9.8
Unfilled orders	93,591	94,777	95,028	-1.3	-0.3	+0.7	95,757	97,123	97,738	-2.0

(NA) Not available. ¹ Revised.

¹ Shipments and new orders are the totals for the period and are adjusted for trading-day and calendar-month variations; unfilled orders are as of the end of the period and are not adjusted for trading-day or calendar-month variations.

² Based on advance sample. Estimates of manufacturers' shipments, inventories, and orders are subject to survey error and revision. One major component of survey error is nonsampling error, which includes errors of coverage, response and nonreporting. Since the survey panel is not a probability sample, estimates of sampling error cannot be calculated. Further details on survey design, methodology, and data limitations are contained in our most recent annual benchmark publication, Current Industrial Reports: M3-1(96), "Manufacturers' Shipments, Inventories, and Orders: 1987-1996."

³ The Capital Goods Industries include Nondefense : ordnance and accessories, steam engines and turbines, internal combustion engines, construction mining and material handling equipment, metalworking machinery, special industry machinery, general industrial machinery, computer and office equipment, refrigeration, heating and service industry machinery, electrical transmission and distribution equipment, electrical industrial apparatus, communication equipment, complete aircraft, missiles, and space vehicles, aircraft missiles, and space vehicle engines and parts, ships and tank components, railroad equipment, and search and navigation equipment.

Defense capital goods include : ordnance, communication equipment, aircraft, missiles, space vehicles, and parts, ships, tanks and tank components, search and navigation equipment.

Table 2. **AVERAGE REVISIONS TO PREVIOUSLY PUBLISHED MONTHLY PERCENT CHANGES**
(Based on seasonally adjusted data)

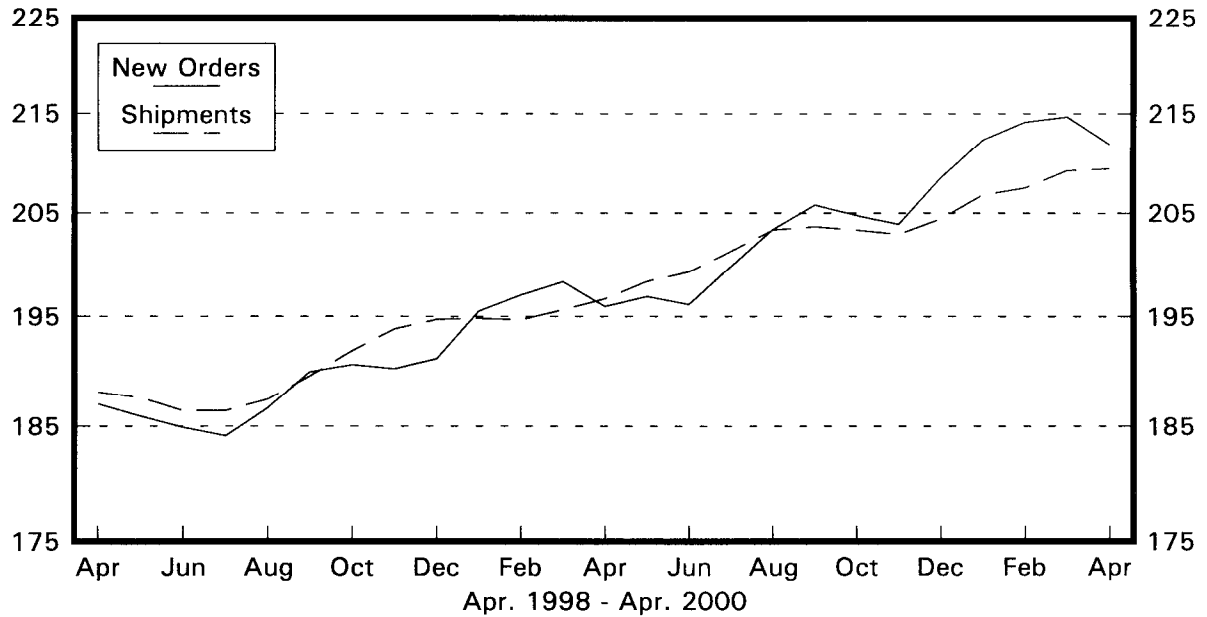
Industry	Shipments			New Orders			Unfilled Orders		
	Year ago	Apr.	Apr. 1999-	Year ago	Apr.	Apr. 1999-	Year ago	Apr.	Apr. 1999-
	Apr. 1999	1995-1999	Mar. 2000	Apr. 1999	1995-1999	Mar. 2000	Apr. 1999	1995-1999	Mar. 2000
Durable goods	0.2	0.3	1.1	0.0	0.4	1.8	0.0	0.1	0.5
Primary metals	0.2	0.5	0.9	0.1	0.7	1.5	0.1	0.3	1.0
Industrial machinery and equipment	0.6	0.5	3.0	0.1	0.6	2.3	0.2	0.2	0.9
Electronic and other electrical equipment	1.3	0.5	1.7	1.3	1.1	4.6	0.1	0.5	1.4
Transportation equipment	0.6	0.5	5.2	0.2	1.0	5.6	0.1	0.1	0.8
Nondefense capital goods	0.4	0.6	2.9	0.2	0.5	3.6	0.1	0.1	0.8
Defense capital goods	1.4	0.8	5.3	0.9	3.8	9.3	0.1	0.2	1.3

Note : The revisions are the differences between the month-to-month percent changes of the advance and final estimates. The monthly averages are the simple averages of the differences, without regard to the months specified.

Total Durable Goods

New Orders and Shipments
Three Month Moving Averages

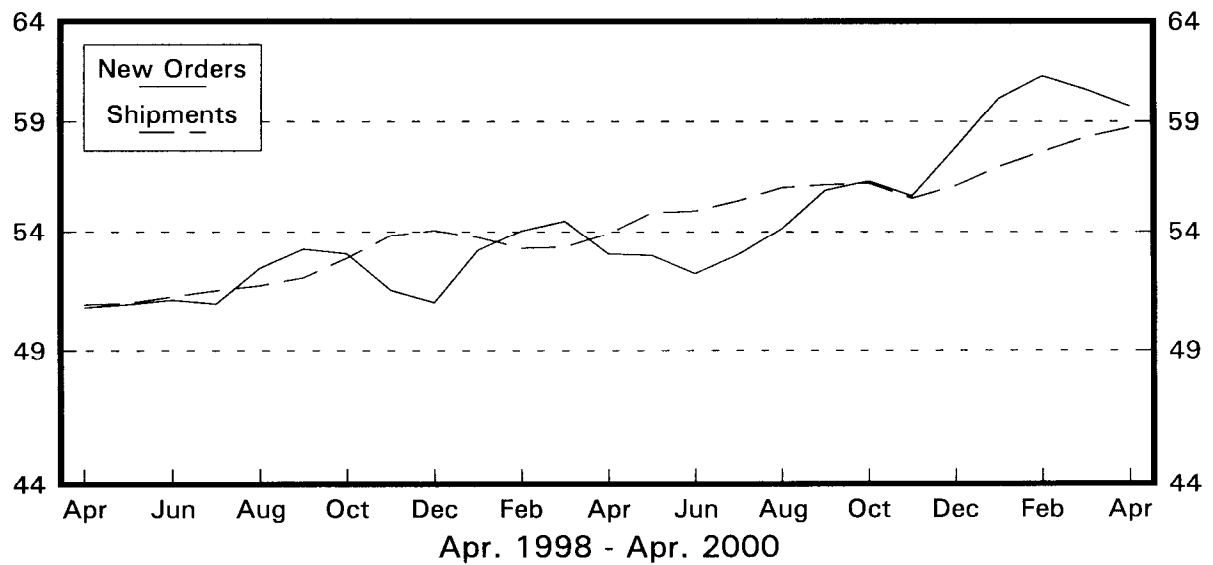
Billions of Dollars



Nondefense Capital Goods

New Orders and Shipments
Three Month Moving Averages

Billions of Dollars



Note: All Charts based on seasonally adjusted current dollars.