

UNITED STATES DEPARTMENT OF  
**COMMERCE**  
**NEWS** WASHINGTON, D.C. 20230

ECONOMICS  
AND  
STATISTICS  
ADMINISTRATION

BUREAU OF THE  
CENSUS

Bureau of the Census  
For Data - (301) 457-4673  
For Questions - Kathy Menth or Gloria Cable  
(301) 457-4832 or (301) 457-4814  
M3-1(96)-5

For Release 8:30 A.M. EDT  
June 26, 1996  
CB96-104

ADVANCE REPORT ON DURABLE GOODS MANUFACTURERS' SHIPMENTS AND ORDERS  
May 1996

(All figures in text below are in seasonally adjusted current dollars)

• **NEW ORDERS** New orders for manufactured durable goods in May increased \$5.5 billion or 3.3 percent to \$171.8 billion, the Department of Commerce, Bureau of the Census reported today. This follows a 1.8 percent April decrease and is the largest increase since the 5.1 percent August 1995 increase. Excluding transportation, new orders increased \$0.9 billion or 0.7 percent to \$129.0 billion, the fifth increase in the last six months. Year-to-date new orders are 4.4 percent above the same period in 1995.

Transportation equipment, up two of the last three months, had the largest increase, \$4.7 billion or 12.2 percent to \$42.9 billion; led by aircraft and parts, all component categories increased. This follows a 12.1 percent April decrease. Industrial machinery and equipment, up four of the last five months, increased \$0.8 billion or 2.5 percent to \$33.5 billion. This follows a 0.1 percent April increase. Primary metals, up for the second consecutive month, increased \$0.2 billion or 1.4 percent to \$15.1 billion, following a 7.6 percent April increase. Electronic and other electrical equipment, down four of the last five months, decreased \$0.8 billion or 3.0 percent to \$26.6 billion, following a 2.5 percent April decrease.

• **SHIPMENTS** Shipments of durable goods in May increased \$3.2 billion or 1.9 percent to \$170.5 billion, following a 2.1 percent April increase. This is the third increase in the last four months. Year-to-date shipments are 3.3 percent above the same period in 1995.

Transportation equipment, up three of the last four months, had the largest increase, \$1.4 billion or 3.4 percent to \$40.7 billion, mostly due to aircraft and parts. This follows a 7.3 percent April increase. Industrial machinery and equipment, up for the first month since February, increased \$0.6 billion or 1.8 percent to \$33.3 billion, following a 1.6 percent April decrease. Electronic and other electrical equipment, up three of the last four months, increased \$0.1 billion or 0.3 percent to \$27.9 billion, following a 0.9 percent April decrease. Primary metals, up for the second consecutive month, increased \$0.1 billion or 0.5 percent to \$14.7 billion, following a 2.8 percent April increase.

• **UNFILLED ORDERS** Unfilled orders for durable goods in May increased \$1.4 billion or 0.3 percent to \$457.6 billion. This follows a 0.2 percent April decrease and is the eighth increase in the last nine months.

Transportation equipment, up six of the last seven months, increased \$2.2 billion or 1.0 percent to \$219.5 billion, due to aircraft and parts. This follows a 0.5 percent April decrease. Primary metals increased \$0.4 billion or 1.4 percent to \$28.9 billion. This follows a 1.0 percent April increase and is the third increase in the last four months. Industrial machinery and equipment, up four of the last five months, increased \$0.3 billion or 0.3 percent to \$74.0 billion. This follows a slight April increase. Electronic and other electrical equipment, down three of the last four months, decreased \$1.3 billion or 2.5 percent to \$52.3 billion, following a 0.8 percent April decrease.

• **CAPITAL GOODS INDUSTRIES, DEFENSE** New orders in May, up two of the last three months, increased 0.4 percent to \$6.2 billion. This follows a 34.3 percent April decrease. Shipments, up two of the last three months, increased \$0.1 billion or 1.4 percent to \$6.3 billion, following a 3.8 percent April decrease. Unfilled orders, down three of the last four months, decreased \$0.1 billion or 0.1 percent to \$111.5 billion, following a slight April decline.

• **CAPITAL GOODS INDUSTRIES, NONDEFENSE** New orders in May increased \$4.1 billion or 9.6 percent to \$46.7 billion. This follows a 12.6 percent April decrease and is the second increase in the last three months. Shipments, up three of the last four months, increased \$1.5 billion or 3.4 percent to \$45.2 billion. This follows a 2.1 percent April decrease. Unfilled orders increased \$1.5 billion or 0.7 percent to \$225.9 billion, the eighth increase in the last nine months. Excluding aircraft and parts, new orders increased slightly to \$38.9 billion, the first increase since February; shipments, up three of the last four months, increased \$0.5 billion or 1.3 percent to \$39.6 billion, following a 2.2 percent April decrease; and unfilled orders decreased \$0.7 billion or 0.7 percent to \$100.3 billion, the second consecutive monthly decline.

• **REVISED APRIL DATA** Revised seasonally adjusted April figures for all manufacturing industries are: shipments, \$310.6 billion (revised from \$309.9 billion); new orders, \$309.7 billion (revised from \$309.1 billion); unfilled orders, \$478.9 billion (revised from \$479.0 billion); and total inventories, \$422.1 billion (revised from \$421.7 billion).

**SEE BACK PAGE FOR UPCOMING REVISIONS**

This report presents advance information on two key business indicators: durable goods manufacturers' shipments and orders. Revised and more detailed estimates plus nondurable goods and inventory data will be published July 3, 1996. The advance report on durable goods for June is scheduled for July 25, 1996. This report is available on the day of issue through the Department of Commerce's online Economic Bulletin Board (N-8-1) (202-482-3870) and through the Census Bureau's online information service-CENDATA. Further information about accessing CENDATA can be obtained from Dialog Information Services, Inc. (1-800-334-2564) and CompuServe (1.800.848.8100). The CENDATA staff at the Bureau of the Census (301-457-1214) can provide content information and general guidance.

**Table 1. DURABLE GOODS MANUFACTURERS' SHIPMENTS AND ORDERS**  
(Millions of dollars)

Item	Seasonally adjusted						Not seasonally adjusted <sup>1</sup>			
	Monthly			Percent Change			Monthly			Percent change May96/95
	May 1996 <sup>2</sup>	Apr. 1996 <sup>2</sup>	Mar. 1996	Apr.- May <sup>2</sup>	Mar.- Apr. <sup>2</sup>	Feb.- Mar.	May 1996 <sup>2</sup>	Apr. 1996 <sup>2</sup>	May 1995	
<b>DURABLE GOODS</b>										
<b>Total :</b>										
Shipments	170,477	167,325	163,867	+1.9	+2.1	-0.2	172,598	165,479	161,166	+7.1
New orders	171,833	166,292	169,278	+3.3	-1.8	+2.6	172,005	165,801	159,850	+7.6
Unfilled orders	457,649	456,293	457,326	+0.3	-0.2	+1.2	461,634	462,227	439,928	+4.9
<b>Excluding defense :</b>										
Shipments	164,179	161,114	157,414	+1.9	+2.4	-0.4	166,482	159,747	154,806	+7.5
New orders	165,604	160,086	159,827	+3.4	+0.2	+0.4	167,327	160,495	155,491	+7.6
Unfilled orders	346,181	344,756	345,784	+0.4	-0.3	+0.7	349,144	348,299	329,141	+6.1
<b>With unfilled orders :</b>										
Shipments	136,835	134,030	132,946	+2.1	+0.8	+0.2	135,858	129,829	127,502	+6.6
New orders	138,191	132,997	138,357	+3.9	-3.9	+3.7	135,265	130,151	126,186	+7.2
<b>Primary metals :</b>										
Shipments	14,721	14,643	14,245	+0.5	+2.8	-0.2	15,161	14,956	15,519	-2.3
New orders	15,129	14,916	13,859	+1.4	+7.6	-3.6	15,112	14,922	14,356	+5.3
Unfilled orders	28,904	28,496	28,223	+1.4	+1.0	-1.3	29,961	30,010	29,514	+1.5
<b>Industrial machinery and equipment:</b>										
Shipments	33,253	32,661	33,184	+1.8	-1.6	-1.0	32,610	31,156	30,237	+7.8
New orders	33,505	32,681	32,664	+2.5	+0.1	-4.7	32,872	31,272	30,704	+7.1
Unfilled orders	73,975	73,723	73,703	+0.3	0.0	-0.7	74,157	73,895	72,387	+2.4
<b>Electronic and other electrical equipment :</b>										
Shipments	27,920	27,826	28,088	+0.3	-0.9	+1.5	27,056	26,212	24,951	+8.4
New orders	26,592	27,409	28,108	-3.0	-2.5	+4.9	25,387	27,481	25,901	-2.0
Unfilled orders	52,267	53,595	54,012	-2.5	-0.8	0.0	53,117	54,786	53,625	-0.9
<b>Transportation equipment :</b>										
Shipments	40,686	39,334	36,649	+3.4	+7.3	-3.0	43,380	41,052	39,559	+9.7
New orders	42,868	38,195	43,437	+12.2	-12.1	+14.6	44,321	39,741	37,905	+16.9
Unfilled orders	219,539	217,357	218,496	+1.0	-0.5	+3.2	220,723	219,782	200,014	+10.4
<b>CAPITAL GOODS INDUSTRIES<sup>3</sup></b>										
<b>Total :</b>										
Shipments	51,484	49,911	51,086	+3.2	-2.3	+0.9	49,475	46,395	46,621	+6.1
New orders	52,949	48,848	58,233	+8.4	-16.1	+11.2	49,556	45,121	45,833	+8.1
Unfilled orders	337,322	335,857	336,920	+0.4	-0.3	+2.2	338,643	338,562	315,479	+7.3
<b>Nondefense :</b>										
Shipments	45,186	43,700	44,633	+3.4	-2.1	+0.6	43,359	40,663	40,261	+7.7
New orders	46,720	42,642	48,782	+9.6	-12.6	+4.7	44,878	39,815	41,474	+8.2
Unfilled orders	225,854	224,320	225,378	+0.7	-0.5	+1.9	226,153	224,634	204,692	+10.5
<b>Excluding aircraft and parts :</b>										
Shipments	39,596	39,105	39,972	+1.3	-2.2	+0.2	37,960	36,168	35,725	+6.3
New orders	38,939	38,925	40,246	0.0	-3.3	-2.0	37,288	36,198	36,441	+2.3
Unfilled orders	100,340	100,997	101,177	-0.7	-0.2	+0.3	100,639	101,311	97,872	+2.8
<b>Defense :</b>										
Shipments	6,298	6,211	6,453	+1.4	-3.8	+2.8	6,116	5,732	6,360	-3.8
New orders	6,229	6,206	9,451	+0.4	-34.3	+63.4	4,678	5,306	4,359	+7.3
Unfilled orders	111,468	111,537	111,542	-0.1	0.0	+2.8	112,490	113,928	110,787	+1.5

(NA) Not available. <sup>1</sup> Revised.<sup>1</sup> Shipments and new orders are the totals for the period and are adjusted for trading-day and calendar-month variations; unfilled orders are as of the end of the period and are not adjusted for trading-day or calendar-month variations.<sup>2</sup> Based on advance sample. Estimates of manufacturers' shipments, inventories, and orders are subject to survey error and revision. One major component of survey error is nonsampling error, which includes errors of coverage, response and nonreporting. Since the survey panel is not a probability sample, estimates of sampling error cannot be calculated. Further details on survey design, methodology, and data limitations are contained in our most recent annual benchmark publication, Current Industrial Reports: M3-1(92), "Manufacturers' Shipments, Inventories, and Orders: 1982-1992."<sup>3</sup> The Capital Goods Industries include Nondefense: ordnance and accessories, steam engines and turbines, internal combustion engines, construction mining and material handling equipment, metalworking machinery, special industry machinery, general industrial machinery, computer and office equipment, refrigeration, heating and service industry machinery, electrical transmission and distribution equipment, electrical industrial apparatus, communication equipment, complete aircraft, missiles, and space vehicles, aircraft missiles, and space vehicle engines and parts, ships and tank components, railroad equipment, and search and navigation equipment.

Defense capital goods include: ordnance, communication equipment, aircraft, missiles, space vehicles, and parts, ships, tanks and tank components, search and navigation equipment.

**Table 2. AVERAGE REVISIONS TO PREVIOUSLY PUBLISHED MONTHLY PERCENT CHANGES**  
(Based on seasonally adjusted data)

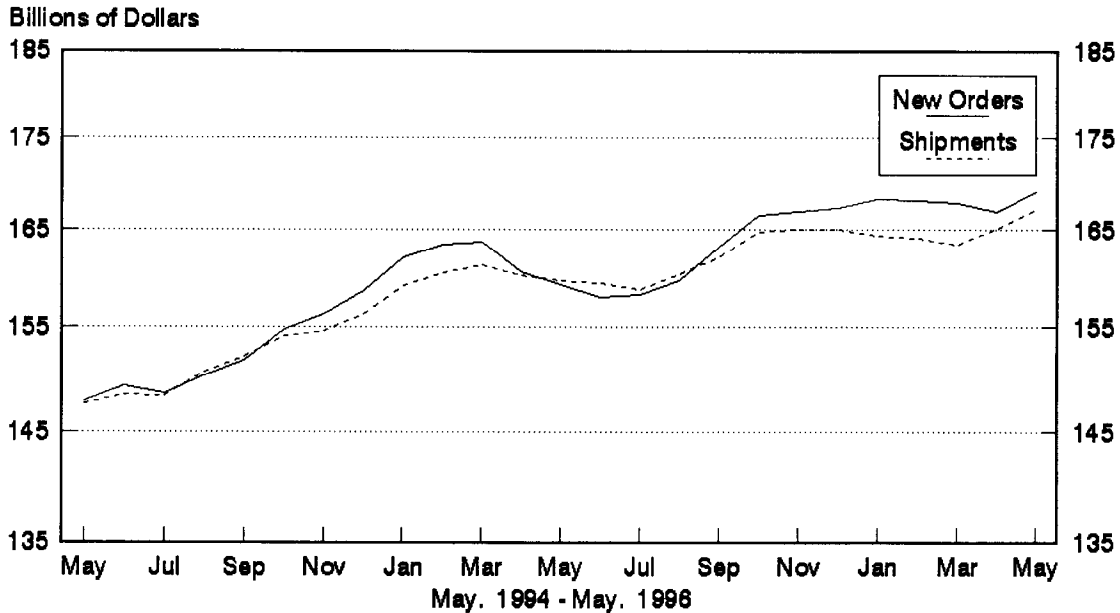
Industry	Shipments			New Orders			Unfilled Orders		
	Year ago May 1995	May 1991-1995	May 1995- Apr. 1996	Year ago May 1995	May 1991-1995	May 1995- Apr. 1996	Year ago May 1995	May 1991-1995	May 1995- Apr. 1996
Durable goods	0.1	0.1	0.3	0.1	0.6	0.5	0.0	0.2	0.1
Primary metals	0.0	0.3	0.4	1.3	1.2	0.8	0.6	0.5	0.4
Industrial machinery and equipment	0.4	0.3	0.6	0.3	0.3	1.0	0.1	0.1	0.4
Electronic and other electrical equipment	0.7	0.3	0.5	0.7	0.6	0.7	0.0	0.2	0.2
Transportation equipment	0.1	0.2	0.6	0.1	2.0	1.5	0.0	0.2	0.3
Nondefense capital goods	0.5	0.2	0.6	0.8	1.9	1.3	0.0	0.2	0.2
Defense capital goods	0.7	0.6	1.0	2.1	2.6	6.0	0.1	0.1	0.3

Note: The revisions are the differences between the month-to-month percent changes of the advance and final estimates. The monthly averages are the simple averages of the differences, without regard to the months specified.

## Total Durable Goods

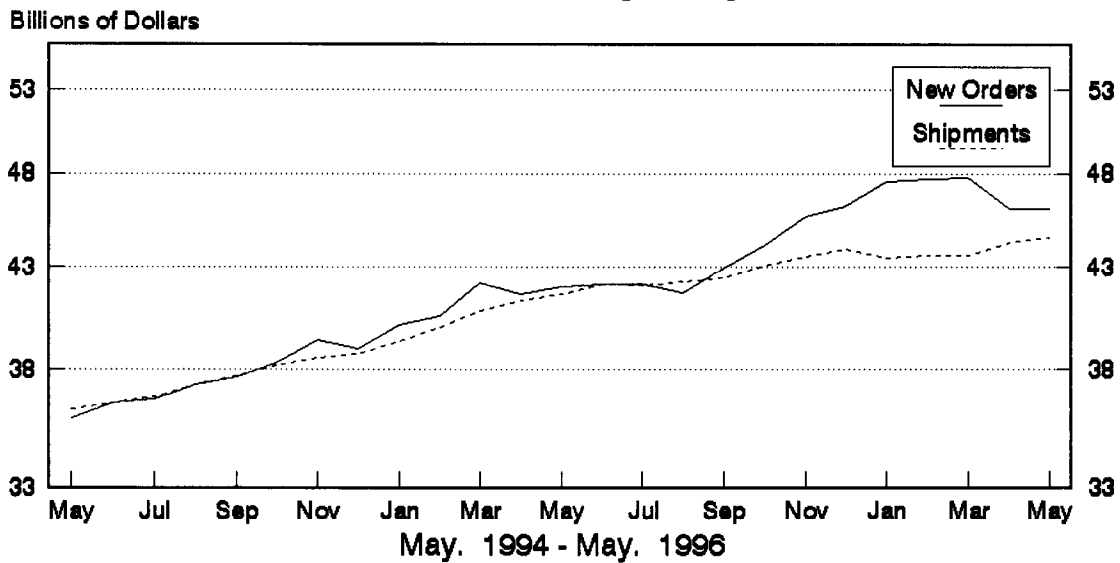
3

New Orders and Shipments  
Three Month Moving Averages



## Nondefense Capital Goods

New Orders and Shipments  
Three Month Moving Averages



Note: All Charts based on seasonally adjusted current dollars.

Official Business  
Penalty for Private Use, \$300

#### NOTICE

Revised historical data for Manufacturers' Shipments, Inventories, and Orders will be issued in mid-July. The revisions to the historical data are the result of:

- benchmarking the shipments and inventory data to the revised 1988-1991 Annual Survey of Manufactures (ASM); 1992 Census of Manufactures; and 1993-1994 Annual Survey of Manufactures (ASM).
- benchmarking the defense shipments series to the 1992 MC9675 "Shipments to Federal Government Agencies."
- adjusting new and unfilled orders to be consistent with the benchmarked shipments and inventory data.
- correcting monthly data for late receipts, reclassification of reported data, and revisions to previously reported data.
- updating the trading day adjustment factors for the shipments series.
- updating the seasonal adjustment factors for all series, including re-evaluating options used.

The publication will include data from 1982-December 1995. Please call Kathy Menth on (301) 457-4832 with questions.

