

UNITED STATES DEPARTMENT OF
COMMERCE
NEWS WASHINGTON, D.C. 20230

ECONOMICS
AND
STATISTICS
ADMINISTRATION

BUREAU OF THE
CENSUS

Bureau of the Census
Gloria Cable or Lee Wentela
(301) 457-4804 or (301) 457-4814
M3-1(95)-10

For Release 8:30 A.M. EST
November 30, 1995
CB95-213

ADVANCE REPORT ON DURABLE GOODS MANUFACTURERS' SHIPMENTS AND ORDERS
October 1995

(All figures in text below are in seasonally adjusted current dollars)

• **NEW ORDERS** New orders for manufactured durable goods in October decreased \$1.6 billion or 1.0 percent to \$167.3 billion, the Department of Commerce, Bureau of the Census reported today. This follows increases of 2.9 percent and 5.1 percent in September and August respectively and is the sixth decrease this year. Excluding transportation equipment, new orders increased \$2.9 billion or 2.3 percent to \$128.7 billion. Year to date, durable goods new orders are 8.2 percent above the same period a year ago.

Transportation equipment had the largest decrease, \$4.5 billion or 10.5 percent to \$38.6 billion; led by aircraft and parts, all component categories decreased. This follows increases of 10.6 percent in September and 17.2 percent in August. Industrial machinery and equipment decreased \$0.3 billion or 0.9 percent to \$31.7 billion, following increases of 1.7 percent in September and 5.4 percent in August. Electronic and other electrical equipment, up three of the last four months, increased \$1.8 billion or 6.2 percent to \$29.8 billion, due to electronic components. Primary metals increased \$0.3 billion or 2.2 percent to \$15.3 billion. This follows a 1.7 percent September decrease.

• **SHIPMENTS** Shipments of durable goods in October decreased \$1.2 billion or 0.7 percent to \$164.7 billion, following increases of 1.1 percent in September and 5.3 percent in August. This is the third decline this year. Year to date, shipments are 8.1 percent above the same period last year.

Transportation equipment, down for the sixth month this year, had the largest decrease, \$1.1 billion or 2.8 percent to \$38.6 billion. This follows increases of 2.6 percent and 11.4 percent in September and August respectively. Industrial machinery and equipment decreased \$0.2 billion or 0.6 percent to \$31.9 billion, following increases of 2.1 percent in September and 4.0 percent in August. Electronic and other electrical equipment decreased \$0.1 billion or 0.5 percent to \$27.5 billion, following increases of 1.7 percent in September and 5.4 percent in August. Primary metals, up for the third consecutive month, increased \$0.1 billion or 0.4 percent to \$15.0 billion.

• **UNFILLED ORDERS** Unfilled orders for durable goods in October increased \$2.6 billion or 0.6 percent to \$439.6 billion. This follows a 0.7 percent September increase and is the third increase in the last four months.

Electronic and other electrical equipment had the largest increase, \$2.3 billion or 4.2 percent to \$57.0 billion, following a 0.7 percent September increase. This is the eighth increase this year and the twelfth in the last fourteen months. Primary metals, up for the third consecutive month, increased \$0.3 billion or 1.1 percent to \$28.1 billion, following a 0.2 percent September increase. Industrial machinery and equipment, down for the fourth consecutive month, decreased \$0.3 billion or 0.4 percent to \$72.4 billion. Transportation equipment decreased slightly to \$199.4 billion. This follows two consecutive monthly increases and declines in nearly every month since September 1991.

• **CAPITAL GOODS INDUSTRIES, DEFENSE** New orders in October decreased \$1.3 billion or 18.4 percent to \$5.7 billion, following increases of 1.1 percent in September and 39.4 percent in August. Shipments, down four of the last five months, decreased 0.6 percent, following a 1.9 percent September decrease. Unfilled orders decreased \$0.6 billion or 0.6 percent to \$108.2 billion, following increases of 0.6 percent in September and 0.4 percent in August.

• **CAPITAL GOODS INDUSTRIES, NONDEFENSE** New orders in October decreased \$3.5 billion or 7.4 percent to \$43.3 billion. This follows increases of 12.2 percent in September and 3.6 percent in August. Shipments decreased \$0.6 billion or 1.5 percent to \$42.9 billion, following increases of 2.5 percent in September and 3.6 percent in August. Unfilled orders increased \$0.4 billion or 0.2 percent to \$206.3 billion, following a 1.6 percent September increase. Excluding aircraft and parts, new orders decreased \$1.5 billion or 3.7 percent to \$38.2 billion, following increases of 7.3 percent in September and 3.0 percent in August; shipments decreased \$0.4 billion or 1.0 percent to \$38.3 billion, the first decrease since July; unfilled orders decreased \$0.1 billion or 0.1 percent to \$98.3 billion, the third decrease in the last four months.

• **REVISED SEPTEMBER DATA** Revised seasonally adjusted September figures for all manufacturing industries are: shipments, \$304.5 billion (revised from \$304.3 billion); new orders, \$306.5 billion (unrevised); unfilled orders, \$461.3 billion (revised from \$461.5 billion); and total inventories, \$415.8 billion (revised from \$415.6 billion).

OUR PRESS RELEASE INTERNET ADDRESS: <http://www.census.gov/ftp/pub/indicator/www/m3adv.html>

This report presents advance information on two key business indicators: durable goods manufacturers' shipments and orders. Revised and more detailed estimates plus nondurable goods and inventory data will be published December 7, 1995. The advance report on durable goods for November is scheduled for December 27, 1995. This report is available on the day of issue through the Department of Commerce's online Economic Bulletin Board (N-8-1) (202-482-3870) and through the Census Bureau's online information service-CENDATA. Further information about accessing CENDATA can be obtained from Dialog Information Services, Inc. (1-800-334-2564) and CompuServe (1-800-848-8199). The CENDATA staff at the Bureau of the Census (301-457-1214) can provide content information and general guidance.

Table 1. DURABLE GOODS MANUFACTURERS' SHIPMENTS AND ORDERS
(Millions of dollars)

Item	Seasonally adjusted						Not seasonally adjusted ¹			
	Monthly			Percent Change			Monthly			Percent change Oct.95/94
	Oct. 1995 ²	Sept. 1995 ²	Aug. 1995	Sept.- Oct. ²	Aug.- Sept. ²	July- Aug.	Oct. 1995 ²	Sept. 1995 ²	Oct. 1994	
DURABLE GOODS										
Total :										
Shipments	164,728	165,940	164,196	-0.7	+1.1	+5.3	168,691	177,197	157,557	+7.1
New orders	167,284	168,903	164,082	-1.0	+2.9	+5.1	171,751	176,110	158,839	+8.1
Unfilled orders	439,628	437,072	434,109	+0.6	+0.7	0.0	435,386	432,326	422,569	+3.0
Excluding defense :										
Shipments	158,385	159,561	157,693	-0.7	+1.2	+5.4	162,494	170,200	150,899	+7.7
New orders	161,556	161,884	157,140	-0.2	+3.0	+4.0	165,686	168,544	152,248	+8.8
Unfilled orders	331,457	328,286	325,963	+1.0	+0.7	-0.2	328,163	324,971	312,593	+5.0
With unfilled orders :										
Shipments	131,791	132,351	131,576	-0.4	+0.6	+3.7	133,675	143,227	123,817	+8.0
New orders	134,347	135,314	131,462	-0.7	+2.9	+3.4	136,735	142,140	125,099	+9.3
Primary metals :										
Shipments	15,005	14,945	14,936	+0.4	+0.1	+1.6	15,298	15,324	14,066	+8.8
New orders	15,323	14,994	15,258	+2.2	-1.7	+6.6	15,316	14,446	14,463	+5.9
Unfilled orders	28,092	27,774	27,725	+1.1	+0.2	+1.2	26,430	26,412	26,307	+0.5
Industrial machinery and equipment:										
Shipments	31,918	32,096	31,431	-0.6	+2.1	+4.0	30,906	35,040	27,736	+11.4
New orders	31,654	31,947	31,415	-0.9	+1.7	+5.4	31,347	34,436	30,041	+4.3
Unfilled orders	72,388	72,652	72,801	-0.4	-0.2	0.0	72,145	71,704	66,158	+9.0
Electronic and other electrical equipment :										
Shipments	27,480	27,623	27,174	-0.5	+1.7	+5.4	27,619	30,415	23,951	+15.3
New orders	29,780	28,030	26,683	+6.2	+5.0	-5.7	30,482	29,228	24,343	+25.2
Unfilled orders	57,035	54,735	54,328	+4.2	+0.7	-0.9	56,254	53,391	45,342	+24.1
Transportation equipment :										
Shipments	38,627	39,721	38,725	-2.8	+2.6	+11.4	40,583	41,103	39,792	+2.0
New orders	38,585	43,104	38,988	-10.5	+10.6	+17.2	40,687	44,050	38,179	+6.6
Unfilled orders	199,443	199,485	196,102	0.0	+1.7	+0.1	198,263	198,159	200,604	-1.2
CAPITAL GOODS INDUSTRIES³										
Total :										
Shipments	49,275	49,945	49,020	-1.3	+1.9	+3.4	47,252	55,290	43,259	+9.2
New orders	49,032	53,799	48,618	-8.9	+10.7	+7.5	48,156	58,442	43,824	+9.9
Unfilled orders	314,491	314,734	310,880	-0.1	+1.2	-0.1	313,229	312,325	309,430	+1.2
Nondefense :										
Shipments	42,932	43,566	42,517	-1.5	+2.5	+3.6	41,055	48,293	36,601	+12.2
New orders	43,304	46,780	41,676	-7.4	+12.2	+3.6	42,091	50,876	37,233	+13.0
Unfilled orders	206,320	205,948	202,734	+0.2	+1.6	-0.4	206,006	204,970	199,454	+3.3
Excluding aircraft and parts :										
Shipments	38,285	38,665	37,638	-1.0	+2.7	+3.8	36,804	42,966	32,416	+13.5
New orders	38,173	39,629	36,924	-3.7	+7.3	+3.0	37,356	43,299	34,911	+7.0
Unfilled orders	98,325	98,437	97,473	-0.1	+1.0	-0.7	98,011	97,459	89,508	+9.5
Defense :										
Shipments	6,343	6,379	6,503	-0.6	-1.9	+2.1	6,197	6,997	6,658	-6.9
New orders	5,728	7,019	6,942	-18.4	+1.1	+39.4	6,065	7,566	6,591	-8.0
Unfilled orders	108,171	108,786	108,146	-0.6	+0.6	+0.4	107,223	107,355	109,976	-2.5

(NA) Not available. ¹ Revised.¹ Shipments and new orders are the totals for the period and are adjusted for trading-day and calendar-month variations; unfilled orders are as of the end of the period and are not adjusted for trading-day or calendar-month variations.² Based on advance sample. Estimates of manufacturers' shipments, inventories, and orders are subject to survey error and revision. One major component of survey error is nonsampling error, which includes errors of coverage, response and nonreporting. Since the survey panel is not a probability sample, estimates of sampling error cannot be calculated. Further details on survey design, methodology, and data limitations are contained in our most recent annual benchmark publication, Current Industrial Reports: M3-1(92), "Manufacturers' Shipments, Inventories, and Orders: 1982-1992."³ The Capital Goods Industries include Nondefense : ordnance and accessories, steam engines and turbines, internal combustion engines, construction mining and material handling equipment, metalworking machinery, special industry machinery, general industrial machinery, computer and office equipment, refrigeration, heating and service industry machinery, electrical transmission and distribution equipment, electrical industrial apparatus, communication equipment, complete aircraft, missiles, and space vehicles, aircraft missiles, and space vehicle engines and parts, ships and tank components, railroad equipment, and search and navigation equipment. Defense capital goods include : ordnance, communication equipment, aircraft, missiles, space vehicles, and parts, ships, tanks and tank components, search and navigation equipment.

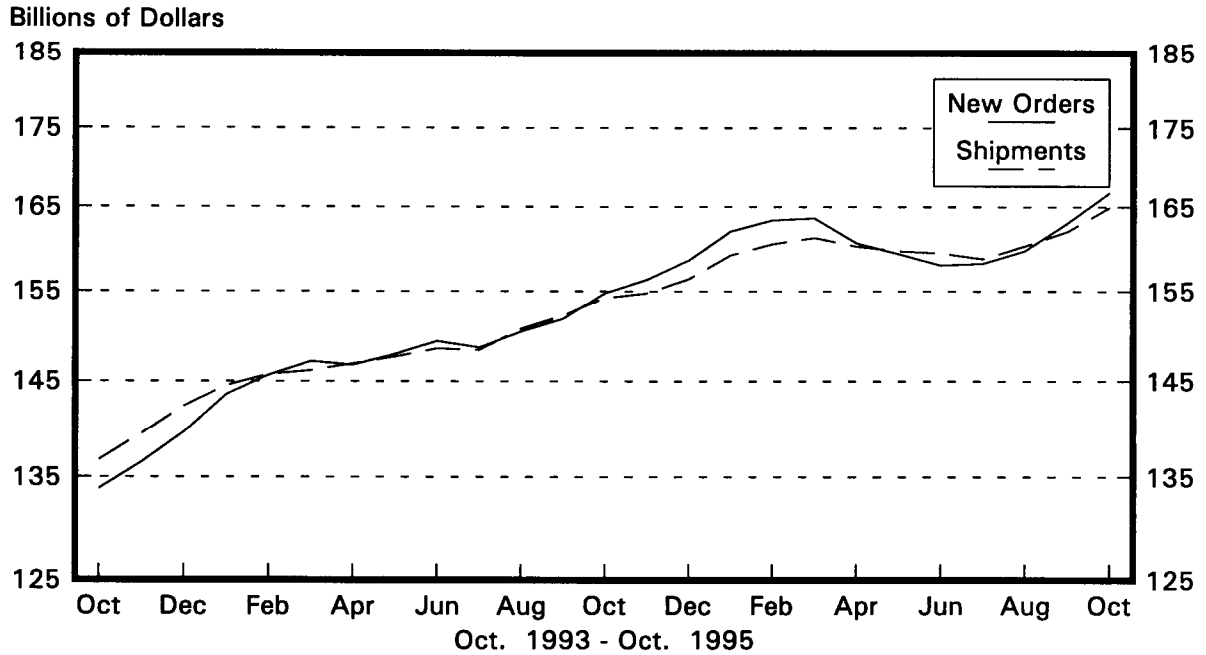
Table 2. AVERAGE REVISIONS TO PREVIOUSLY PUBLISHED MONTHLY PERCENT CHANGES
(Based on seasonally adjusted data)

Industry	Shipments			New Orders			Unfilled Orders		
	Year ago Oct. 1994	Oct. 1990-1994	Oct. 1994- Sept. 1995	Year ago Oct. 1994	Oct. 1990-1994	Oct. 1994- Sept. 1995	Year ago Oct. 1994	Oct. 1990-1994	Oct. 1994- Sept. 1995
Durable goods	0.1	0.3	0.3	0.3	0.4	0.3	0.3	0.1	0.1
Primary metals	0.7	0.4	0.6	1.2	0.7	1.1	0.5	0.5	0.4
Industrial machinery and equipment	0.4	0.7	0.6	1.2	1.0	1.0	0.8	0.3	0.4
Electronic and other electrical equipment	0.5	0.8	0.4	2.0	1.6	0.8	0.8	0.3	0.4
Transportation equipment	0.2	0.4	0.5	0.1	0.6	0.6	0.0	0.0	0.1
Nondefense capital goods	0.0	0.1	0.7	1.0	0.8	0.9	0.3	0.2	0.1
Defense capital goods	0.1	1.0	0.7	0.1	2.5	2.3	0.1	0.1	0.2

Note : The revisions are the differences between the month-to-month percent changes of the advance and final estimates. The monthly averages are the simple averages of the differences, without regard to sign for the months specified.

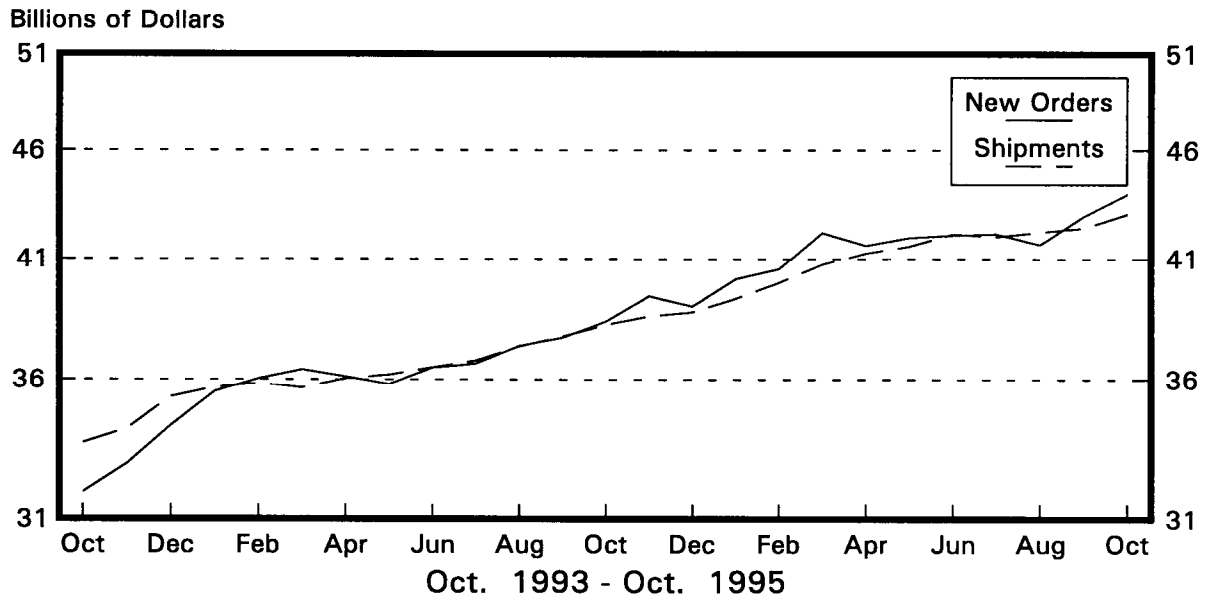
Total Durable Goods

New Orders and Shipments
Three Month Moving Averages



Nondefense Capital Goods

New Orders and Shipments
Three Month Moving Averages



Note: All Charts based on seasonally adjusted current dollars.