

UNITED STATES DEPARTMENT OF  
**COMMERCE**  
**NEWS** WASHINGTON, D.C. 20230

ECONOMICS  
AND  
STATISTICS  
ADMINISTRATION

BUREAU OF THE  
CENSUS

Bureau of the Census  
Steve Andrews or Gloria Cable  
(301) 763-2502 or (301) 763-2512  
M3-1(94)-05

For Release 8:30 A.M. EDT  
June 23, 1994  
CB94-100

**ADVANCE REPORT ON DURABLE GOODS MANUFACTURERS' SHIPMENTS AND ORDERS**  
May 1994

(All figures in text below are in seasonally adjusted current dollars)

**New Orders**

New orders for manufactured durable goods in May increased \$1.3 billion or 0.9 percent to \$148.4 billion, following a 0.1 percent increase in April, the Department of Commerce, Bureau of the Census reported today. This is the third consecutive monthly increase and the ninth in the last ten months. Year to date, new orders are 12.9 percent above the same period a year ago.

All major groups except electronic and other electrical equipment and stone, clay, and glass products increased. Transportation equipment had the largest increase, up \$0.8 billion or 2.2 percent to \$36.5 billion, as an increase in aircraft and parts more than offset declines in railroad equipment and motor vehicles and parts. Primary metals increased \$0.6 billion or 4.7 percent to \$13.1 billion, following a 5.5 percent decrease in April. Electronic and other electrical equipment had the largest decrease, down \$1.2 billion or 5.0 percent to \$22.2 billion, primarily due to communications equipment and electronic components. This follows an 8.7 percent increase in April.

**Shipments**

Shipments of durable goods in May increased \$1.2 billion or 0.8 percent to \$147.9 billion, the third increase in the last four months. All major groups except transportation equipment and fabricated metal products increased. Industrial machinery and equipment had the largest increase, up \$0.7 billion or 2.5 percent to \$27.1 billion, with increases in nearly all categories. Transportation equipment had the largest decrease, down \$0.5 billion or 1.2 percent to \$37.2 billion, following a 3.0 percent decline in April. Year to date, durable goods shipments are 10.1 percent above the same period a year ago.

**Unfilled Orders**

Unfilled orders for durable goods in May increased \$0.5 billion or 0.1 percent to \$424.1 billion, the second consecutive monthly increase. Industrial machinery and equipment, up for the eleventh consecutive month, had the largest increase, up \$1.0 billion or 1.7 percent to \$58.6 billion, with nearly half the increase in computers and office equipment. Primary metals increased \$0.6 billion or 2.3 percent to \$24.9 billion, the sixth consecutive monthly increase. Transportation equipment had the largest decrease, down \$0.7 billion or 0.3 percent to \$209.1 billion, primarily due to shipbuilding and tanks. This is the twenty-fourth decrease in the last twenty-five months. Instruments and related products also had a large decrease.

**Capital Goods Industries**

**Defense** - New orders were up \$0.7 billion or 11.9 percent to \$7.1 billion, due to aircraft and parts. This follows a 28.7 percent increase in April. Shipments decreased \$0.1 billion or 2.0 percent to \$6.8 billion, following a 2.5 percent decrease in April. Unfilled orders increased \$0.2 billion or 0.2 percent to \$113.5 billion, the first increase since January.

**Nondefense** - New orders decreased \$0.3 billion or 0.8 percent to \$35.6 billion, following a 0.8 percent decrease in April. This is the fourth consecutive monthly decline. Shipments increased \$0.4 billion or 1.2 percent to \$36.3 billion, following a 1.5 percent decrease in April. Unfilled orders decreased \$0.8 billion or 0.4 percent to \$198.9 billion, following a slight decline in April. Excluding aircraft and parts, new orders decreased \$0.8 billion or 2.5 percent, the second consecutive monthly decrease; shipments increased \$0.7 billion or 2.2 percent, the third increase in the last four months; and unfilled orders increased \$0.2 billion or 0.2 percent, the twelfth consecutive monthly increase.

This report presents advance information on two key business indicators: durable goods manufacturers' shipments and orders. Revised and more detailed estimates plus nondurable goods and inventory data will be published June 30, 1994. The advance report on durable goods for June is scheduled for July 27, 1994. This report is available on the day of issue through the Department of Commerce's online Economic Bulletin Board (N-8-1) (202-482-3870) and through the Census Bureau's online information service-CENDATA. Further information about accessing CENDATA can be obtained from Dialog Information Services, Inc. (1-800-334-2564) and CompuServe (1-800-848-8199). The CENDATA staff at the Bureau of the Census (301-763-2074) can provide content information and general guidance.

Table 1. DURABLE GOODS MANUFACTURERS' SHIPMENTS AND ORDERS  
(Millions of dollars)

	Seasonally adjusted						Not seasonally adjusted <sup>1</sup>			
	Monthly			Percent Change			Monthly			Percent change May94/93
	May 1994 <sup>2</sup>	Apr. 1994 <sup>2</sup>	Mar. 1994	Apr.- May <sup>2</sup>	Mar.- Apr. <sup>2</sup>	Feb.- Mar.	May 1994 <sup>2</sup>	Apr. 1994 <sup>2</sup>	May 1993	
<b>DURABLE GOODS</b>										
<b>Total :</b>										
Shipments	147,884	146,687	147,388	+0.8	-0.5	+0.8	150,636	146,951	134,897	+11.7
New orders	148,355	147,036	146,906	+0.9	+0.1	+0.7	150,202	147,872	128,752	+16.7
Unfilled orders	424,088	423,617	423,268	+0.1	+0.1	-0.1	427,342	427,776	441,732	-3.3
<b>Excluding defense :</b>										
Shipments	141,059	139,723	140,249	+1.0	-0.4	+0.7	144,077	140,472	127,708	+12.8
New orders	141,295	140,725	142,004	+0.4	-0.9	+1.6	143,985	142,687	124,455	+15.7
Unfilled orders	310,606	310,370	309,368	+0.1	+0.3	+0.6	313,297	313,389	315,919	-0.8
<b>With unfilled orders :</b>										
Shipments	117,374	116,165	116,630	+1.0	-0.4	+1.4	116,783	113,870	105,404	+10.8
New orders	117,845	116,514	116,148	+1.1	+0.3	+1.3	116,349	114,791	99,259	+17.2
<b>Primary metals :</b>										
Shipments	12,569	12,275	12,243	+2.4	+0.3	+0.8	12,857	12,595	11,409	+12.7
New orders	13,120	12,536	13,259	+4.7	-5.5	+6.0	13,279	12,684	10,946	+21.3
Unfilled orders	24,870	24,319	24,058	+2.3	+1.1	+4.4	25,906	25,484	23,721	+9.2
<b>Industrial machinery and equipment:</b>										
Shipments	27,068	26,415	26,513	+2.5	-0.4	+0.6	26,813	25,836	23,026	+16.4
New orders	28,042	28,019	27,827	+0.1	+0.7	+2.6	27,836	27,380	23,211	+19.9
Unfilled orders	58,586	57,612	56,008	+1.7	+2.9	+2.4	58,908	57,885	50,824	+15.9
<b>Electronic and other electrical equipment :</b>										
Shipments	22,265	22,134	21,431	+0.6	+3.3	+0.7	21,808	21,225	18,435	+18.3
New orders	22,192	23,360	21,487	-5.0	+8.7	+2.5	21,268	23,293	17,817	+19.4
Unfilled orders	47,287	47,360	46,134	-0.2	+2.7	+0.1	47,611	48,151	42,896	+11.0
<b>Transportation equipment :</b>										
Shipments	37,220	37,676	38,852	-1.2	-3.0	+0.2	39,985	39,490	36,797	+8.7
New orders	36,507	35,733	36,268	+2.2	-1.5	-3.3	38,763	37,382	32,169	+20.5
Unfilled orders	209,119	209,832	211,775	-0.3	-0.9	-1.2	209,897	211,119	231,301	-9.3
<b>CAPITAL GOODS INDUSTRIES<sup>3</sup></b>										
<b>Total :</b>										
Shipments	43,149	42,861	43,570	+0.7	-1.6	+2.0	41,750	40,580	38,971	+7.1
New orders	42,610	42,158	41,029	+1.1	+2.8	-3.5	40,633	39,303	33,518	+21.2
Unfilled orders	312,373	312,912	313,615	-0.2	-0.2	-0.8	313,301	314,418	332,208	-5.7
<b>Nondefense :</b>										
Shipments	36,324	35,897	36,431	+1.2	-1.5	+1.8	35,191	34,101	31,782	+10.7
New orders	35,550	35,847	36,127	-0.8	-0.8	-0.7	34,416	34,118	29,221	+17.8
Unfilled orders	198,891	199,665	199,715	-0.4	0.0	-0.2	199,256	200,031	206,395	-3.5
<b>Excluding aircraft and parts :</b>										
Shipments	31,991	31,310	30,898	+2.2	+1.3	-0.6	31,033	29,650	26,319	+17.9
New orders	32,151	32,966	33,080	-2.5	-0.3	+3.3	31,192	31,373	26,202	+19.0
Unfilled orders	81,628	81,468	79,812	+0.2	+2.1	+2.8	81,993	81,834	71,595	+14.5
<b>Defense :</b>										
Shipments	6,825	6,964	7,139	-2.0	-2.5	+2.9	6,559	6,479	7,189	-8.8
New orders	7,060	6,311	4,902	+11.9	+28.7	-20.1	6,217	5,185	4,297	+44.7
Unfilled orders	113,482	113,247	113,900	+0.2	-0.6	-1.9	114,045	114,387	125,813	-9.4

(NA) Not available. <sup>1</sup> Revised.

<sup>1</sup> Shipments and new orders are the totals for the period and are adjusted for trading-day and calendar-month variations; unfilled orders are as of the end of the period and are not adjusted for trading-day or calendar-month variations.

<sup>2</sup> Based on advance sample. Estimates of manufacturers' shipments and orders are subject to survey variability and revision. Since the survey panel is not a probability sample, estimates of sampling variability cannot be calculated. Further details on survey design, methodology, and data limitation are contained in our most recent annual benchmark publication, Current Industrial Reports: M3-1(92), "Manufacturers' Shipments, Inventories, and Orders: 1982-1992."

<sup>3</sup> The Capital Goods Industries include Nondefense : ordnance and accessories, steam engines and turbines, internal combustion engines, construction mining and material handling equipment, metalworking machinery, special industry machinery, general industrial machinery, computer and office equipment, refrigeration, heating and service industry machinery, electrical transmission and distribution equipment, electrical industrial apparatus, communication equipment complete aircraft, missiles, and space vehicles, aircraft missiles, and space vehicle engines and parts, ships and tank components, railroad equipment, and search and navigation equipment.

Defense capital goods include : ordnance, communication equipment, aircraft, missiles, space vehicles, and parts, ships, tanks and tank components, search and navigation equipment.

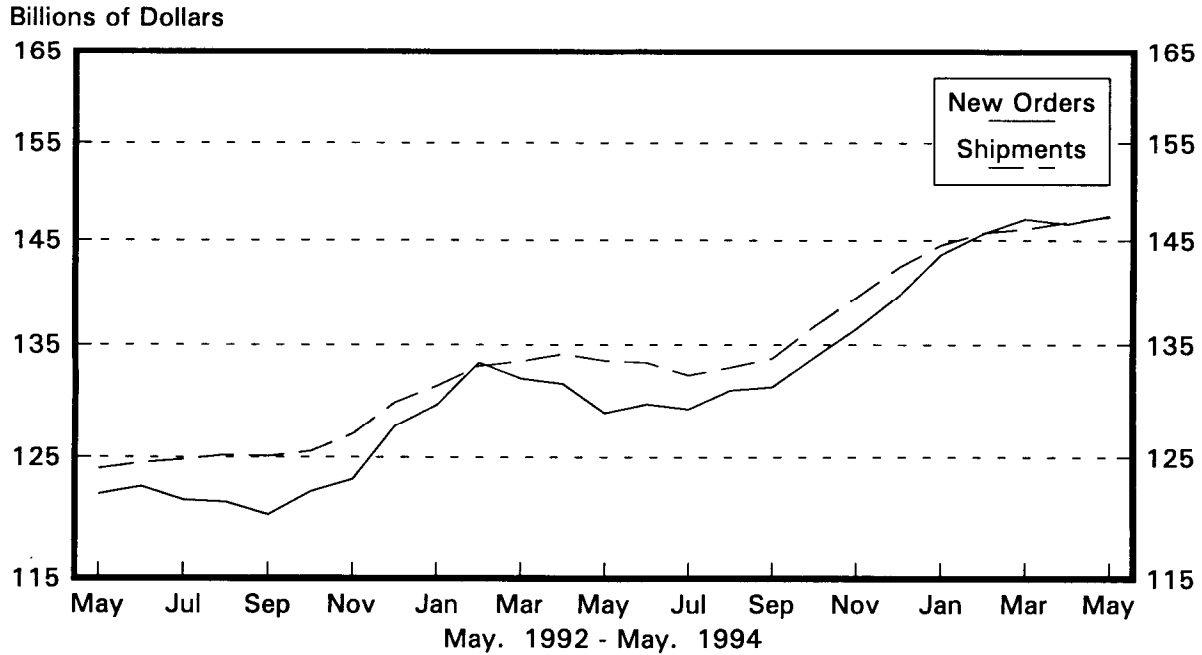
Table 2. AVERAGE REVISIONS TO PREVIOUSLY PUBLISHED MONTHLY PERCENT CHANGES  
(Based on seasonally adjusted data)

Industry	Shipments			New Orders			Unfilled Orders		
	Year ago May 1993	May 1989-1993	May 1993- Apr. 1994	Year ago May 1993	May 1989-1993	May 1993- Apr. 1994	Year ago May 1993	May 1989-1993	May 1993- Apr. 1994
Durable goods	0.0	0.2	0.3	0.2	0.9	0.5	0.0	0.1	0.1
Primary metals	0.2	0.3	0.5	0.4	1.4	1.1	0.1	0.4	0.5
Industrial machinery and equipment	0.4	0.5	0.6	0.2	0.9	0.6	0.1	0.2	0.3
Electronic and other electrical equipment	0.2	0.7	0.6	0.3	0.7	1.9	0.0	0.1	0.6
Transportation equipment	0.3	0.4	0.5	0.9	2.9	1.0	0.0	0.2	0.1
Nondefense capital goods	0.2	0.6	0.5	0.3	3.4	0.7	0.1	0.3	0.1
Defense capital goods	0.7	1.8	0.9	2.1	10.9	6.4	0.1	0.3	0.3

Note : The revisions are the differences between the month-to-month percent changes of the advance and final estimates. The monthly averages are the simple averages of the differences, without regard for the months specified.

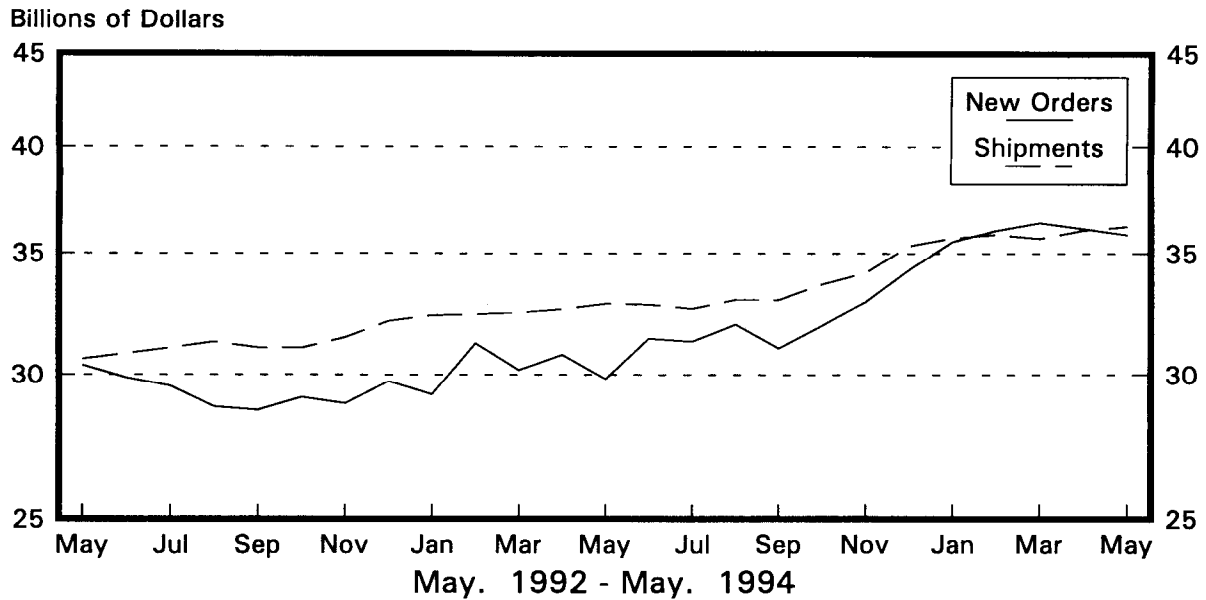
# Total Durable Goods

New Orders and Shipments  
Three Month Moving Averages



# Nondefense Capital Goods

New Orders and Shipments  
Three Month Moving Averages



Note: All Charts based on seasonally adjusted current dollars.