
UNITED STATES DEPARTMENT OF
COMMERCE
NEWS WASHINGTON, D.C. 20230

ECONOMICS
AND
STATISTICS
ADMINISTRATION

BUREAU OF THE
CENSUS

Bureau of the Census
Steve Andrews or Kathy Menth
(301) 763-2502 or (301) 763-2575
M3-1(93)-6

For Release 8:30 A.M. EDT
July 28, 1993
CB93-141

ADVANCE REPORT ON DURABLE GOODS MANUFACTURERS' SHIPMENTS AND ORDERS
June 1993

(All figures in text below are in seasonally adjusted current dollars)

New Orders

New orders for manufactured durable goods in June increased \$4.8 billion or 3.8 percent to \$131.6 billion, the Department of Commerce, Bureau of the Census reported today. This follows a 2.4 percent decrease in May and is the first increase since February. Year to date, new orders for 1993 are 7.9 percent above the same period a year ago.

Transportation equipment had the largest increase, up \$4.6 billion or 15.1 percent to \$35.1 billion, primarily due to aircraft and parts. This follows three consecutive monthly declines. Electronic and other electrical equipment was up \$0.6 billion or 3.3 percent to \$18.8 billion, primarily due to electronic components. Stone, clay and glass products, industrial machinery and equipment, and lumber and wood products declined.

Shipments

Shipments of durable goods in June increased \$3.0 billion or 2.3 percent to \$135.2 billion, following a 0.4 percent decrease in May. All major groups increased except lumber and wood products and industrial machinery and equipment. Transportation equipment had the largest increase, up \$1.7 billion or 4.8 percent to \$35.9 billion, due to motor vehicles and parts and aircraft and parts. Electronic and other electrical equipment increased \$0.6 billion or 3.3 percent to \$19.4 billion. Primary metals increased \$0.4 billion or 3.5 percent to \$11.6 billion. Year to date, shipments are 8.0 percent above the same period a year ago.

Unfilled Orders

Unfilled orders for durable goods in June decreased \$3.7 billion or 0.8 percent to \$435.5 billion, the lowest level since August 1988. This is the fourth consecutive monthly decline. All major groups declined. Transportation equipment was down \$0.8 billion or 0.4 percent to \$230.2 billion, primarily due to aircraft and parts and shipbuilding and tanks. This is the fourteenth consecutive monthly decline. Electronic and other electrical equipment declined \$0.7 billion or 1.6 percent to \$41.5 billion, primarily due to electronic components. Instruments and related products also had a large decrease.

Capital Goods Industries

Defense - New orders were up \$0.4 billion or 8.1 percent to \$5.9 billion, following a 20.7 percent decrease in May. Shipments were up \$0.2 billion or 2.1 percent to \$7.5 billion, following a 1.7 percent decrease in May. Unfilled orders, down seventeen of the last eighteen months, decreased \$1.7 billion or 1.3 percent to \$123.9 billion, the lowest level since February 1984.

Nondefense - New orders increased \$3.4 billion or 11.4 percent to \$33.3 billion, following a 1.9 percent decrease in May. Shipments were up \$0.7 billion or 2.1 percent to \$33.3 billion, following a 1.3 percent increase in May. Unfilled orders remained at \$206.1 billion after declining in thirteen of the previous fourteen months. This is the lowest level since June 1989. Excluding aircraft and parts, new orders increased \$0.2 billion or 0.7 percent; shipments increased \$0.1 billion or 0.4 percent; and unfilled orders decreased \$0.2 billion or 0.3 percent.

Please note that revisions in data reported for new orders and unfilled orders for October 1992 through March 1993 appear in Tables A and B.

This report presents advance information on two key business indicators: durable goods manufacturers' shipments and orders. Revised and more detailed estimates plus nondurable goods and inventory data will be published August 5, 1993. The advance report on durable goods for July is scheduled for August 25, 1993. This report is available on the day of issue through the Department of Commerce's online Economic Bulletin Board (N-8-1) (202-482-3870) and through the Census Bureau's online information service-CENDATA. Further information about accessing CENDATA can be obtained from Dialog Information Services, Inc. (1-800-334-2564) and CompuServe (1-800-848-8199). The CENDATA staff at the Bureau of the Census (301-763-2074) can provide content information and general guidance.

Table 1. DURABLE GOODS MANUFACTURERS' SHIPMENTS AND ORDERS
(Millions of dollars)

Item	Seasonally adjusted						Not seasonally adjusted ¹			
	Monthly			Percent Change			Monthly			Percent change
	June 1993 ²	May 1993 ^r	Apr. 1993 ^r	May-June ²	Apr.-May ^r	Mar.-Apr.	June 1993 ²	May 1993 ^r	June 1992	June93/92
DURABLE GOODS										
Total :										
Shipments	135,243	132,250	132,763	+2.3	-0.4	-2.0	148,402	134,845	138,168	+7.4
New orders	131,592	126,758	129,838	+3.8	-2.4	-0.1	141,997	128,679	133,979	+6.0
Unfilled orders	435,542	439,193	444,685	-0.8	-1.2	-0.7	435,306	441,711	473,706	-8.1
Excluding defense :										
Shipments	127,705	124,865	125,254	+2.3	-0.3	-2.0	140,393	127,656	129,665	+8.3
New orders	125,714	121,321	122,985	+3.6	-1.4	+0.4	136,542	124,382	127,061	+7.5
Unfilled orders	311,595	313,586	317,130	-0.6	-1.1	-0.7	312,047	315,898	337,509	-7.5
With unfilled orders :										
Shipments	108,381	105,661	105,836	+2.6	-0.2	-2.2	119,164	105,352	113,221	+5.2
New orders	104,730	100,169	102,911	+4.6	-2.7	+0.3	112,759	99,186	109,032	+3.4
Primary metals :										
Shipments	11,574	11,182	11,392	+3.5	-1.8	-2.5	12,240	11,409	12,147	+0.8
New orders	11,045	10,969	11,212	+0.7	-2.2	-6.7	11,431	10,946	12,145	-5.9
Unfilled orders	22,636	23,165	23,378	-2.3	-0.9	-0.8	22,912	23,721	21,708	+5.5
Industrial machinery and equipment:										
Shipments	23,066	23,227	22,911	-0.7	+1.4	-3.8	26,773	22,974	25,072	+6.8
New orders	22,919	23,158	22,999	-1.0	+0.7	-2.0	26,233	23,139	24,505	+7.1
Unfilled orders	50,479	50,626	50,695	-0.3	-0.1	+0.2	50,264	50,804	51,589	-2.6
Electronic and other electrical equipment :										
Shipments	19,433	18,821	18,596	+3.3	+1.2	-0.9	20,878	18,435	18,337	+13.9
New orders	18,768	18,172	18,862	+3.3	-3.7	+5.5	19,422	17,817	18,027	+7.7
Unfilled orders	41,482	42,147	42,796	-1.6	-1.5	+0.6	41,440	42,896	42,051	-1.5
Transportation equipment :										
Shipments	35,915	34,256	35,180	+4.8	-2.6	-3.0	39,324	36,798	35,818	+9.8
New orders	35,066	30,474	31,798	+15.1	-4.2	-1.3	37,834	32,169	33,622	+12.5
Unfilled orders	230,152	231,001	234,783	-0.4	-1.6	-1.4	229,810	231,300	264,891	-13.2
CAPITAL GOODS INDUSTRIES³										
Total :										
Shipments	40,859	40,034	39,744	+2.1	+0.7	-3.7	46,532	38,919	45,427	+2.4
New orders	39,161	35,320	37,306	+10.9	-5.3	+2.1	43,463	33,446	41,584	+4.5
Unfilled orders	330,093	331,791	336,505	-0.5	-1.4	-0.7	329,119	332,188	367,811	-10.5
Nondefense :										
Shipments	33,321	32,649	32,235	+2.1	+1.3	-3.8	38,523	31,730	36,924	+4.3
New orders	33,283	29,883	30,453	+11.4	-1.9	+4.6	38,008	29,149	34,666	+9.6
Unfilled orders	206,146	206,184	208,950	0.0	-1.3	-0.8	205,860	206,375	231,614	-11.1
Excluding aircraft and parts :										
Shipments	27,132	27,031	26,706	+0.4	+1.2	-3.8	31,319	26,267	29,214	+7.2
New orders	26,889	26,709	27,445	+0.7	-2.7	+0.4	30,599	26,130	28,586	+7.0
Unfilled orders	71,141	71,384	71,706	-0.3	-0.4	+1.0	70,855	71,575	72,514	-2.3
Defense :										
Shipments	7,538	7,385	7,509	+2.1	-1.7	-3.1	8,009	7,189	8,503	-5.8
New orders	5,878	5,437	6,853	+8.1	-20.7	-7.5	5,455	4,297	6,918	-21.1
Unfilled orders	123,947	125,607	127,555	-1.3	-1.5	-0.5	123,259	125,813	136,197	-9.5

(NA) Not available. ^r Revised.¹ Shipments and new orders are the totals for the period and are adjusted for trading-day and calendar-month variations; unfilled orders are as of the end of the period and are not adjusted for trading-day or calendar-month variations.² Based on advance sample.³ The Capital Goods Industries include Nondefense : ordnance and accessories, steam engines and turbines, internal combustion engines, construction mining and material handling equipment, metalworking machinery, special industry machinery, general industrial machinery, computer and office equipment, refrigeration, heating and service industry machinery, electrical transmission and distribution equipment, electrical industrial apparatus, communication equipment, complete aircraft, missiles, and space vehicles, aircraft missiles, and space vehicle engines and parts, ships and tank components, railroad equipment, and search and navigation equipment.
Defense capital goods include : ordnance, communication equipment, aircraft, missiles, space vehicles, and parts, ships, tanks and tank components, search and navigation equipment.

Table 2. AVERAGE REVISIONS TO PREVIOUSLY PUBLISHED MONTHLY PERCENT CHANGES
(Based on seasonally adjusted data)

Industry	Shipments			New Orders			Unfilled Orders		
	Year ago June 1992	June 1988-1992	June 1992- May 1993	Year ago June 1992	June 1988-1992	June 1992- May 1993	Year ago June 1992	June 1988-1992	June 1992- May 1993
Durable goods	0.3	0.2	0.3	0.6	0.6	0.4	0.1	0.1	0.1
Primary metals	0.3	0.8	0.3	0.7	1.0	1.0	0.2	0.3	0.4
Industrial machinery and equipment	0.8	1.1	0.8	1.9	1.9	0.9	0.2	0.4	0.2
Electronic and other electrical equipment	0.1	0.5	0.5	0.1	1.3	0.5	0.1	0.2	0.1
Transportation equipment	0.0	0.4	0.8	0.2	0.9	1.3	0.0	0.2	0.1
Nondefense capital goods	0.7	0.5	0.8	1.2	2.1	1.3	0.1	0.4	0.2
Defense capital goods	0.1	1.1	1.0	2.7	4.9	3.6	0.1	0.2	0.2

Note : The revisions are the differences between the month-to-month percent changes of the advance and final estimates. The monthly averages are the simple averages of the differences, without regard to sign, for the months specified.

Table A. DURABLE GOODS MANUFACTURERS' SHIPMENTS AND ORDERS
(Millions of dollars)

Item	Seasonally adjusted						Not seasonally adjusted ¹			
	Monthly			Percent Change			Monthly			Percent change Mar.93/92
	Mar. 1993	Feb. 1993	Jan. 1993	Feb.- Mar.	Jan.- Feb.	Dec.- Jan.	Mar. 1993	Feb. 1993	Mar. 1992	
DURABLE GOODS										
Total :										
Shipments	135,537	134,133	130,805	+1.0	+2.5	-2.6	144,499	132,542	132,123	+9.4
New orders*	129,903	134,533	131,266	-3.4	+2.5	-2.3	139,127	134,067	130,088	+6.9
Unfilled orders*	447,610	453,244	452,844	-1.2	+0.1	+0.1	450,224	455,596	482,227	-6.6
Excluding defense :										
Shipments	127,785	126,377	123,213	+1.1	+2.6	-2.5	136,435	125,177	123,602	+10.4
New orders*	122,492	128,172	122,454	-4.4	+4.7	-3.4	130,819	128,565	122,488	+6.8
Unfilled orders*	319,399	324,692	322,897	-1.6	+0.6	-0.2	320,565	326,181	340,332	-5.8
With unfilled orders :										
Shipments	108,197	106,227	104,136	+1.9	+2.0	-3.1	115,538	103,863	108,079	+6.9
New orders*	102,563	106,627	104,597	-3.8	+1.9	-2.8	110,166	105,388	106,044	+3.9
Primary metals :										
Shipments	11,680	11,633	11,425	+0.4	+1.8	+1.0	12,053	11,700	11,605	+3.9
New orders	12,015	12,405	12,629	-3.1	-1.8	+3.3	12,779	12,930	11,734	+8.9
Unfilled orders	23,558	23,223	22,451	+1.4	+3.4	+5.7	24,460	23,734	22,122	+10.6
Industrial machinery and equipment:										
Shipments	23,819	22,832	22,582	+4.3	+1.1	-0.1	27,204	22,063	23,675	+14.9
New orders	23,475	23,197	22,690	+1.2	+2.2	+1.2	26,260	22,621	22,948	+14.4
Unfilled orders	50,607	50,951	50,586	-0.7	+0.7	+0.2	50,782	51,726	53,006	-4.2
Electronic and other electrical equipment :										
Shipments	18,756	18,431	17,614	+1.8	+4.6	-7.3	19,793	18,137	17,927	+10.4
New orders	17,881	17,886	18,712	0.0	-4.4	-2.1	18,399	18,328	17,360	+6.0
Unfilled orders	42,530	43,405	43,950	-2.0	-1.2	+2.6	42,640	44,034	42,055	+1.4
Transportation equipment :										
Shipments	36,264	35,987	35,264	+0.8	+2.1	-3.1	38,785	36,668	34,998	+10.8
New orders*	32,225	35,552	32,636	-9.4	+8.9	-6.8	35,577	35,832	34,634	+2.7
Unfilled orders*	238,165	242,204	242,639	-1.7	-0.2	-1.1	239,322	242,530	269,048	-11.0
CAPITAL GOODS INDUSTRIES³										
Total :										
Shipments	41,264	39,793	39,409	+3.7	+1.0	-4.1	45,708	37,970	43,535	+5.0
New orders*	36,533	39,109	37,457	-6.6	+4.4	-6.0	40,970	37,028	42,373	-3.3
Unfilled orders*	338,943	343,674	344,358	-1.4	-0.2	-0.6	340,502	345,240	376,670	-9.6
Nondefense :										
Shipments	33,512	32,037	31,817	+4.6	+0.7	-4.4	37,644	30,605	35,014	+7.5
New orders*	29,122	32,748	28,645	-11.1	+14.3	-11.2	32,662	31,526	34,773	-6.1
Unfilled orders*	210,732	215,122	214,411	-2.0	+0.3	-1.5	210,843	215,825	234,775	-10.2
Excluding aircraft and parts :										
Shipments	27,770	26,588	26,073	+4.4	+2.0	-3.3	31,191	25,399	27,384	+13.9
New orders	27,338	27,071	26,330	+1.0	+2.8	-2.7	30,167	26,092	26,610	+13.4
Unfilled orders	70,967	71,399	70,916	-0.6	+0.7	+0.4	71,078	72,102	73,720	-3.6
Defense :										
Shipments	7,752	7,756	7,592	-0.1	+2.2	-2.8	8,064	7,365	8,521	-5.4
New orders	7,411	6,361	8,812	+16.5	-27.8	+16.1	8,308	5,502	7,600	+9.3
Unfilled orders	128,211	128,552	129,947	-0.3	-1.1	+0.9	129,659	129,415	141,895	-8.6

(NA) Not available. ¹ Revised.

¹ Shipments and new orders are the totals for the period and are adjusted for trading-day and calendar-month variations; unfilled orders are as of the end of the period and are not adjusted for trading-day or calendar-month variations.

² Based on advance sample.

³ The Capital Goods Industries include Nondefense : ordnance and accessories, steam engines and turbines, internal combustion engines, construction mining and material handling equipment, metalworking machinery, special industry machinery, general industrial machinery, computer and office equipment, refrigeration, heating and service industry machinery, electrical transmission and distribution equipment, electrical industrial apparatus, communication equipment, complete aircraft, missiles, and space vehicles, aircraft missiles, and space vehicle engines and parts, ships and tank components, railroad equipment, and search and navigation equipment.
Defense capital goods include : ordnance, communication equipment, aircraft, missiles, space vehicles, and parts, ships, tanks and tank components, search and navigation equipment.

Table B. DURABLE GOODS MANUFACTURERS' SHIPMENTS AND ORDERS
(Millions of dollars)

Item	Seasonally adjusted						Not seasonally adjusted ¹			
	Monthly			Percent Change			Monthly			Percent change
	Dec. 1992	Nov. 1992	Oct. 1992	Nov.-Dec.	Oct.-Nov.	Sept.-Oct.	Dec. 1992	Nov. 1992	Dec. 1991	Dec. 92/91
DURABLE GOODS										
Total :										
Shipments	134,228	128,720	126,425	+4.3	+1.8	+0.4	131,841	128,334	115,860	+13.8
New orders ²	134,348	123,096	125,656	+9.1	-2.0	+4.2	132,707	122,583	114,132	+16.3
Unfilled orders ²	452,383	452,263	457,887	0.0	-1.2	-0.2	450,125	449,259	485,390	-7.3
Excluding defense :										
Shipments	126,415	121,102	118,798	+4.4	+1.9	+0.8	121,831	120,221	105,495	+15.5
New orders ²	126,756	116,476	118,242	+8.8	-1.5	+2.4	121,909	114,530	102,614	+18.8
Unfilled orders ²	323,656	323,315	327,941	+0.1	-1.4	-0.2	320,345	320,267	339,941	-5.8
With unfilled orders :										
Shipments	107,500	103,930	102,487	+3.4	+1.4	-0.2	109,833	104,158	98,681	+11.3
New orders ²	107,620	98,306	101,718	+9.5	-3.4	+4.4	110,699	98,407	96,953	+14.2
Primary metals :										
Shipments	11,309	11,309	11,117	0.0	+1.7	-0.6	10,144	11,117	9,814	+3.4
New orders	12,224	11,188	10,818	+9.3	+3.4	+3.8	11,509	10,960	10,074	+14.2
Unfilled orders	21,247	20,332	20,453	+4.5	-0.6	-1.4	20,676	19,311	21,814	-5.2
Industrial machinery and equipment:										
Shipments	22,612	21,802	21,090	+3.7	+3.4	-0.4	24,452	21,046	21,419	+14.2
New orders	22,415	21,516	21,038	+4.2	+2.3	-1.0	24,015	20,849	20,625	+16.4
Unfilled orders	50,478	50,675	50,961	-0.4	-0.6	-0.1	50,119	50,556	52,759	-5.0
Electronic and other electrical equipment :										
Shipments	18,998	17,906	18,110	+6.1	-1.1	+1.4	19,693	18,461	17,411	+13.1
New orders	19,118	17,959	18,501	+6.5	-2.9	+2.1	19,524	18,383	17,554	+11.2
Unfilled orders	42,852	42,732	42,679	+0.3	+0.1	+0.9	42,087	42,256	41,568	+1.2
Transportation equipment :										
Shipments	36,385	34,118	32,875	+6.6	+3.8	+4.0	35,043	34,379	28,366	+23.5
New orders ²	35,003	28,290	31,891	+23.7	-11.3	+18.0	34,036	29,344	27,851	+22.2
Unfilled orders ²	245,267	246,649	252,477	-0.6	-2.3	-0.4	245,846	246,853	273,883	-10.2
CAPITAL GOODS INDUSTRIES³										
Total :										
Shipments	41,109	39,523	38,751	+4.0	+2.0	-1.6	48,195	39,201	43,286	+11.3
New orders ²	39,867	33,424	37,543	+19.3	-11.0	+7.6	47,598	34,174	41,679	+14.2
Unfilled orders ²	346,310	347,552	353,651	-0.4	-1.7	-0.3	346,964	347,561	381,181	-9.0
Nondefense :										
Shipments	33,296	31,905	31,124	+4.4	+2.5	-0.7	38,185	31,088	32,921	+16.0
New orders ²	32,275	26,804	30,129	+20.4	-11.0	+1.1	36,800	26,121	30,161	+22.0
Unfilled orders ²	217,583	218,604	223,705	-0.5	-2.3	-0.4	217,184	218,569	235,732	-7.9
Excluding aircraft and parts :										
Shipments	26,956	25,631	25,241	+5.2	+1.5	-1.4	30,221	24,937	25,964	+16.4
New orders	27,048	25,135	25,171	+7.6	-0.1	-1.1	29,949	24,575	24,934	+20.1
Unfilled orders	70,659	70,567	71,063	+0.1	-0.7	-0.1	70,260	70,532	72,903	-3.6
Defense :										
Shipments	7,813	7,618	7,627	+2.6	-0.1	-5.1	10,010	8,113	10,365	-3.4
New orders	7,592	6,620	7,414	+14.7	-10.7	+45.5	10,798	8,053	11,518	-6.3
Unfilled orders	128,727	128,948	129,946	-0.2	-0.8	-0.2	129,780	128,992	145,449	-10.8

(NA) Not available. ² Revised.

¹ Shipments and new orders are the totals for the period and are adjusted for trading-day and calendar-month variations; unfilled orders are as of the end of the period and are not adjusted for trading-day or calendar-month variations.

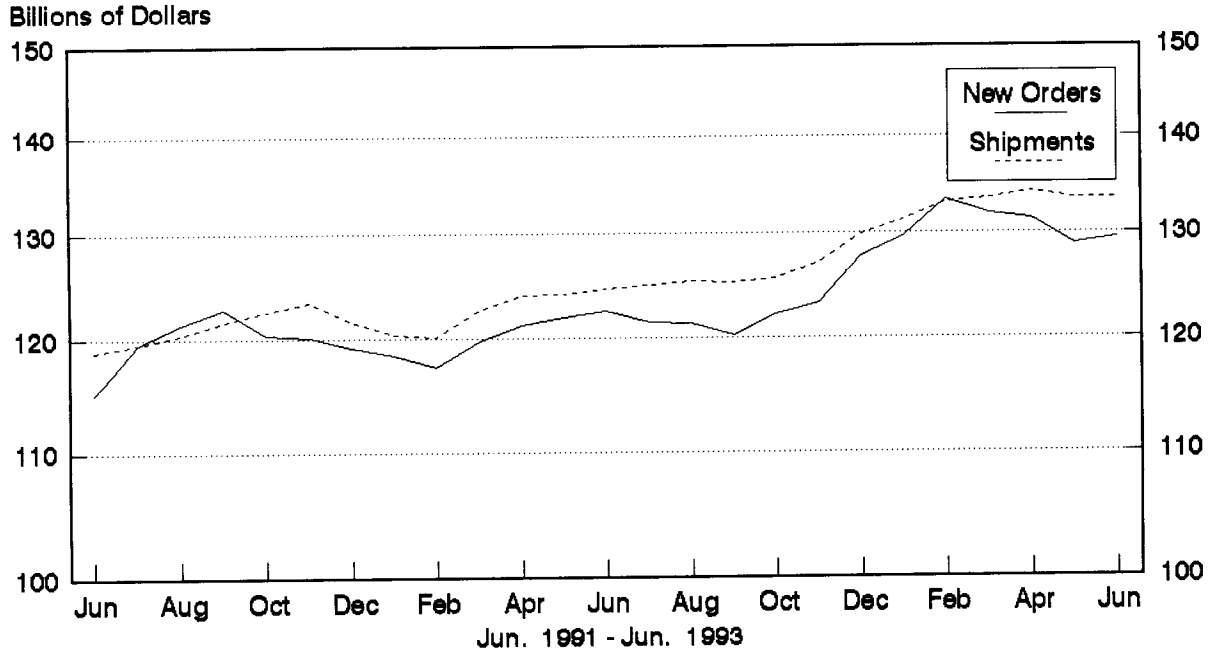
² Based on advance sample.

³ The Capital Goods Industries include Nondefense : ordnance and accessories, steam engines and turbines, internal combustion engines, construction mining and material handling equipment, metalworking machinery, special industry machinery, general industrial machinery, computer and office equipment, refrigeration, heating and service industry machinery, electrical transmission and distribution equipment, electrical industrial apparatus, communication equipment, complete aircraft, missiles, and space vehicles, aircraft missiles, and space vehicle engines and parts, ships and tank components, railroad equipment, and search and navigation equipment.

Defense capital goods include : ordnance, communication equipment, aircraft, missiles, space vehicles, and parts, ships, tanks and tank components, search and navigation equipment.

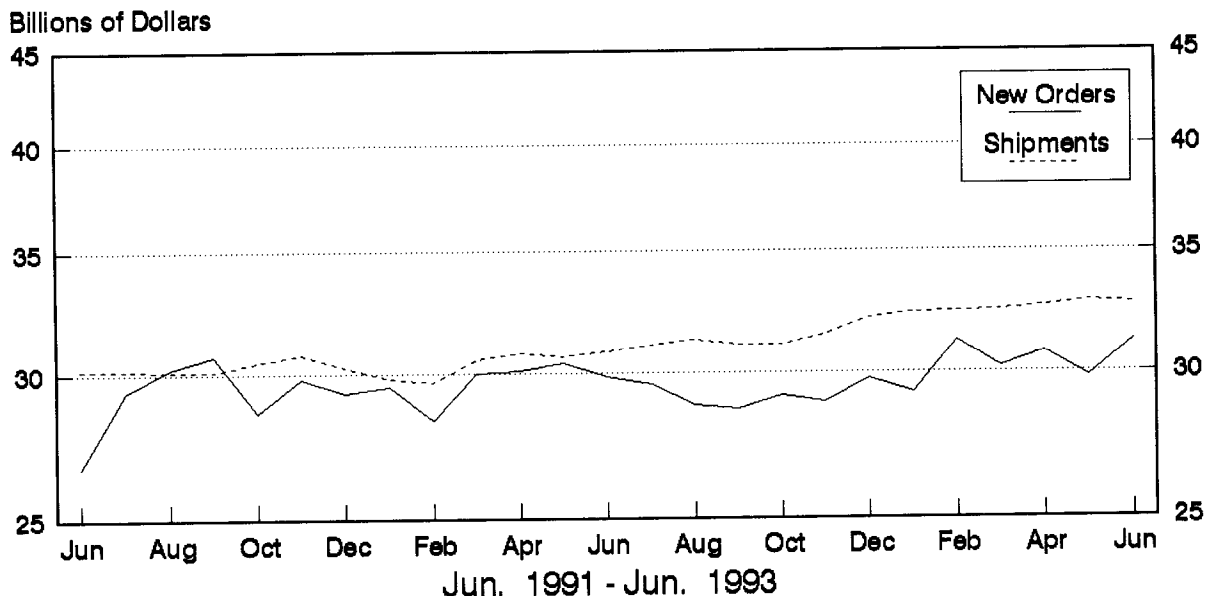
Total Durable Goods

New Orders and Shipments
Three Month Moving Averages



Nondefense Capital Goods

New Orders and Shipments
Three Month Moving Averages



Note: All Charts based on seasonally adjusted current dollars.