
UNITED STATES DEPARTMENT OF
COMMERCE
NEWS WASHINGTON, D.C. 20230

ECONOMICS
AND
STATISTICS
ADMINISTRATION

BUREAU OF THE
CENSUS

Bureau of the Census
Steve Andrews or Kathy Menth
(301) 763-2502 or (301) 763-2575
M3-1(93)-4

For Release 8:30 A.M. EDT
May 26, 1993
CB93-102

ADVANCE REPORT ON DURABLE GOODS MANUFACTURERS' SHIPMENTS AND ORDERS
April 1993

(All figures in text below are in seasonally adjusted current dollars)

New Orders

New orders for manufactured durable goods in April increased \$0.1 billion to \$130.3 billion, the Department of Commerce, Bureau of the Census reported today. This follows a 3.7 percent decrease in March and a 2.3 percent increase in February. Year to date, new orders for 1993 are 10.4 percent above the same period a year ago.

Electronic and other electrical equipment had the largest increase, up \$1.1 billion or 5.9 percent to \$19.2 billion, primarily due to electronic components and communications equipment. Instruments and related products also had a large increase. Industrial machinery and equipment had the largest decrease, down \$1.1 billion or 4.8 percent to \$22.6 billion, primarily due to computers and office equipment and engines and turbines. This follows a 1.0 percent increase in March. Primary metals decreased \$0.8 billion or 6.8 percent to \$11.4 billion, primarily due to blast furnaces and steel mills. Transportation equipment declined 0.1 percent to \$32.4 billion, as declines in motor vehicles and parts and shipbuilding and tanks more than offset an increase in aircraft and parts.

Shipments

Shipments of durable goods in April decreased \$2.6 billion or 1.9 percent to \$132.8 billion, the first decrease since January. This follows a 1.0 percent increase in March. Except for stone, clay, and glass products, all major groups declined. Industrial machinery and equipment had the largest decrease, down \$1.4 billion or 5.8 percent to \$22.7 billion, primarily due to computer and office equipment. This follows a 4.4 percent increase in March. Transportation equipment decreased \$0.8 billion or 2.1 percent to \$35.6 billion, with declines in all industries.

Unfilled Orders

Unfilled orders for durable goods in April decreased \$2.5 billion or 0.6 percent to \$444.8 billion, the lowest level since November 1988. This is the second consecutive monthly decrease. Transportation equipment had the largest decrease, down \$3.1 billion or 1.3 percent to \$235.2 billion, primarily due to aircraft and parts and shipbuilding and tanks. This is the fifth decline in the last six months. Excluding transportation equipment, unfilled orders increased \$0.6 billion. Electronic and other electrical equipment increased \$0.3 billion or 0.7 percent to \$42.8 billion, following a 2.2 percent decline in March. Instruments and related products also had a large increase.

Capital Goods Industries

Defense - New orders were up \$0.2 billion or 2.9 percent to \$7.1 billion, following a 8.9 percent increase in March. Shipments decreased \$0.3 billion or 3.4 percent to \$7.6 billion, following a 0.3 percent decrease in March. Unfilled orders, down for the third month in a row, decreased \$0.4 billion or 0.4 percent to \$125.8 billion, the lowest level since February 1984.

Nondefense - New orders increased \$0.4 billion or 1.2 percent to \$31.2 billion, following a 10.8 percent decrease in March. Shipments were down \$1.6 billion or 4.6 percent to \$32.9 billion, following a 4.5 percent increase in March. Unfilled orders, down \$1.7 billion or 0.8 percent to \$213.1 billion, have declined in twelve of the last thirteen months and are at the lowest level since November 1989. Excluding aircraft and parts, new orders decreased \$0.5 billion or 1.7 percent, shipments decreased \$1.5 billion or 5.3 percent, and unfilled orders increased \$0.6 billion or 0.9 percent.

(SEE BACK PAGE FOR UPCOMING REVISIONS)

This report presents advance information on two key business indicators: durable goods manufacturers' shipments and orders. Revised and more detailed estimates plus nondurable goods and inventory data will be published June 4, 1993. The advance report on durable goods for May is scheduled for June 23, 1993. This report is available on the day of issue through the Department of Commerce's online Economic Bulletin Board (N-8-1) (202-482-3870) and

Table 1. DURABLE GOODS MANUFACTURERS' SHIPMENTS AND ORDERS
(Millions of dollars)

Item	Seasonally adjusted						Not seasonally adjusted ¹			
	Monthly			Percent Change			Monthly			Percent change Apr.93/92
	Apr. 1993 ²	Mar. 1993 ²	Feb. 1993	Mar.- Apr. ²	Feb.- Mar. ²	Jan.- Feb.	Apr. 1993 ²	Mar. 1993 ²	Apr. 1992	
DURABLE GOODS										
Total :										
Shipments	132,838	135,410	134,104	-1.9	+1.0	+2.8	132,769	144,073	123,510	+7.5
New orders	130,300	130,246	135,209	0.0	-3.7	+2.3	130,750	138,795	122,551	+6.7
Unfilled orders	444,775	447,313	452,477	-0.6	-1.1	+0.2	447,122	449,141	475,894	-6.0
Excluding defense :										
Shipments	125,270	127,572	126,244	-1.8	+1.1	+2.8	125,692	135,950	115,613	+8.7
New orders	123,179	123,323	128,849	-0.1	-4.3	+4.5	124,727	131,115	115,782	+7.7
Unfilled orders	318,990	321,081	325,330	-0.7	-1.3	+0.8	320,612	321,577	336,637	-4.8
With unfilled orders :										
Shipments	106,290	108,634	106,626	-2.2	+1.9	+2.3	104,215	115,825	99,421	+4.8
New orders	103,752	103,470	107,731	+0.3	-4.0	+1.7	102,196	110,547	98,462	+3.8
Primary metals :										
Shipments	11,392	11,416	11,418	-0.2	0.0	+2.7	11,643	11,723	11,372	+2.4
New orders	11,374	12,210	12,307	-6.8	-0.8	-1.6	11,689	12,432	11,263	+3.8
Unfilled orders	23,486	23,504	22,710	-0.1	+3.5	+4.1	23,970	23,924	21,540	+11.3
Industrial machinery and equipment:										
Shipments	22,658	24,047	23,036	-5.8	+4.4	+0.8	22,138	27,412	20,116	+10.1
New orders	22,611	23,747	23,521	-4.8	+1.0	+1.8	22,009	26,500	19,720	+11.6
Unfilled orders	51,134	51,181	51,481	-0.1	-0.6	+1.0	51,047	51,176	52,897	-3.5
Electronic and other electrical equipment :										
Shipments	18,890	19,055	18,660	-0.9	+2.1	+5.5	18,079	20,080	16,508	+9.5
New orders	19,169	18,102	18,044	+5.9	+0.3	-4.4	18,883	18,706	16,801	+12.4
Unfilled orders	42,784	42,505	43,458	+0.7	-2.2	-1.4	43,449	42,645	42,404	+2.5
Transportation equipment :										
Shipments	35,570	36,321	36,218	-2.1	+0.3	+2.6	36,883	38,705	33,610	+9.7
New orders	32,441	32,477	36,427	-0.1	-10.8	+9.6	33,573	35,537	33,839	-0.8
Unfilled orders	235,190	238,319	242,163	-1.3	-1.6	+0.1	236,065	239,375	264,972	-10.9
CAPITAL GOODS INDUSTRIES³										
Total :										
Shipments	40,479	42,332	40,857	-4.4	+3.6	+1.2	38,628	46,872	37,659	+2.6
New orders	38,321	37,750	40,927	+1.5	-7.8	+4.5	35,855	42,171	35,666	+0.5
Unfilled orders	338,922	341,080	345,662	-0.6	-1.3	0.0	339,584	342,357	372,013	-8.7
Nondefense :										
Shipments	32,911	34,494	32,997	-4.6	+4.5	+0.9	31,551	38,749	29,762	+6.0
New orders	31,200	30,827	34,567	+1.2	-10.8	+13.9	29,832	34,491	28,897	+3.2
Unfilled orders	213,137	214,848	218,515	-0.8	-1.7	+0.7	213,074	214,793	232,756	-8.5
Excluding aircraft and parts :										
Shipments	27,341	28,882	27,644	-5.3	+4.5	+1.8	25,998	32,426	23,740	+9.5
New orders	27,967	28,459	28,306	-1.7	+0.5	+2.8	26,616	31,412	23,312	+14.2
Unfilled orders	73,646	73,020	73,443	+0.9	-0.6	+0.9	73,583	72,965	75,050	-2.0
Defense :										
Shipments	7,568	7,838	7,860	-3.4	-0.3	+2.5	7,077	8,123	7,897	-10.4
New orders	7,121	6,923	6,360	+2.9	+8.9	-27.7	6,023	7,680	6,769	-11.0
Unfilled orders	125,785	126,232	127,147	-0.4	-0.7	-1.2	126,510	127,564	139,257	-9.2

(NA) Not available. ¹ Revised.¹ Shipments and new orders are the totals for the period and are adjusted for trading-day and calendar-month variations; unfilled orders are as of the end of the period and are not adjusted for trading-day or calendar-month variations.² Based on advance sample.³ The Capital Goods Industries include Nondefense : ordnance and accessories, steam engines and turbines, internal combustion engines, construction mining and material handling equipment, metalworking machinery, special industry machinery, general industrial machinery, computer and office equipment, refrigeration, heating and service industry machinery, electrical transmission and distribution equipment, electrical industrial apparatus, communication equipment, complete aircraft, missiles, and space vehicles, aircraft missiles, and space vehicle engines and parts, ships and tank components, railroad equipment, and search and navigation equipment.

Defense capital goods include : ordnance, communication equipment, aircraft, missiles, space vehicles, and parts, ships, tanks and tank components, search and navigation equipment.

Table 2. AVERAGE REVISIONS TO PREVIOUSLY PUBLISHED MONTHLY PERCENT CHANGES
(Based on seasonally adjusted data)

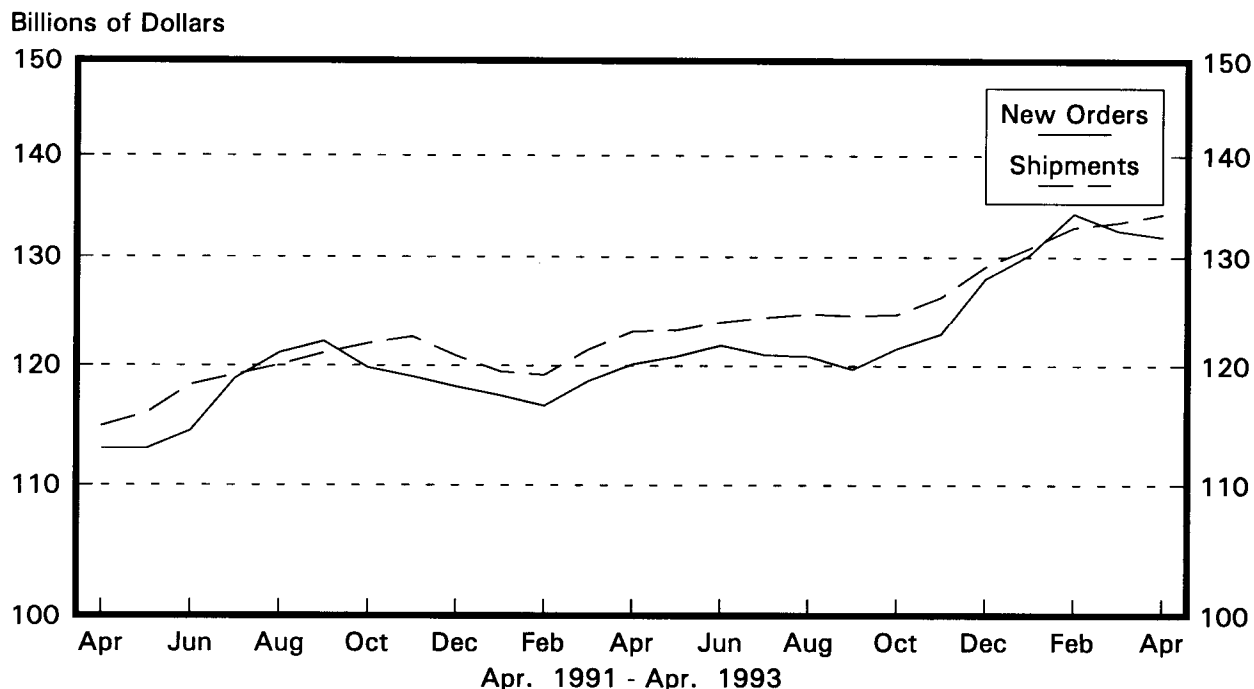
Industry	Shipments			New Orders			Unfilled Orders		
	Year ago Apr. 1992	Apr. 1988-1992	Apr. 1992- Mar. 1993	Year ago Apr. 1992	Apr. 1988-1992	Apr. 1992- Mar. 1993	Year ago Apr. 1992	Apr. 1988-1992	Apr. 1992- Mar. 1993
Durable goods	0.1	0.1	0.2	0.1	0.3	0.4	0.0	0.1	0.1
Primary metals	0.1	0.3	0.4	0.3	0.7	0.7	0.2	0.3	0.3
Industrial machinery and equipment	0.4	0.7	0.6	0.3	1.6	0.8	0.0	0.3	0.2
Electronic and other electrical equipment	0.5	0.5	0.3	0.7	0.5	0.9	0.1	0.2	0.4
Transportation equipment	0.0	0.2	0.4	0.3	0.5	0.6	0.1	0.0	0.0
Nondefense capital goods	0.0	0.7	0.6	0.2	1.0	1.4	0.0	0.0	0.1
Defense capital goods	0.1	0.5	0.5	0.2	2.0	2.1	0.1	0.1	0.1

Note : The revisions are the differences between the month-to-month percent changes of the advance and final estimates. The monthly averages are the simple averages of the differences, without regard to the months specified.

Total Durable Goods

New Orders and Shipments

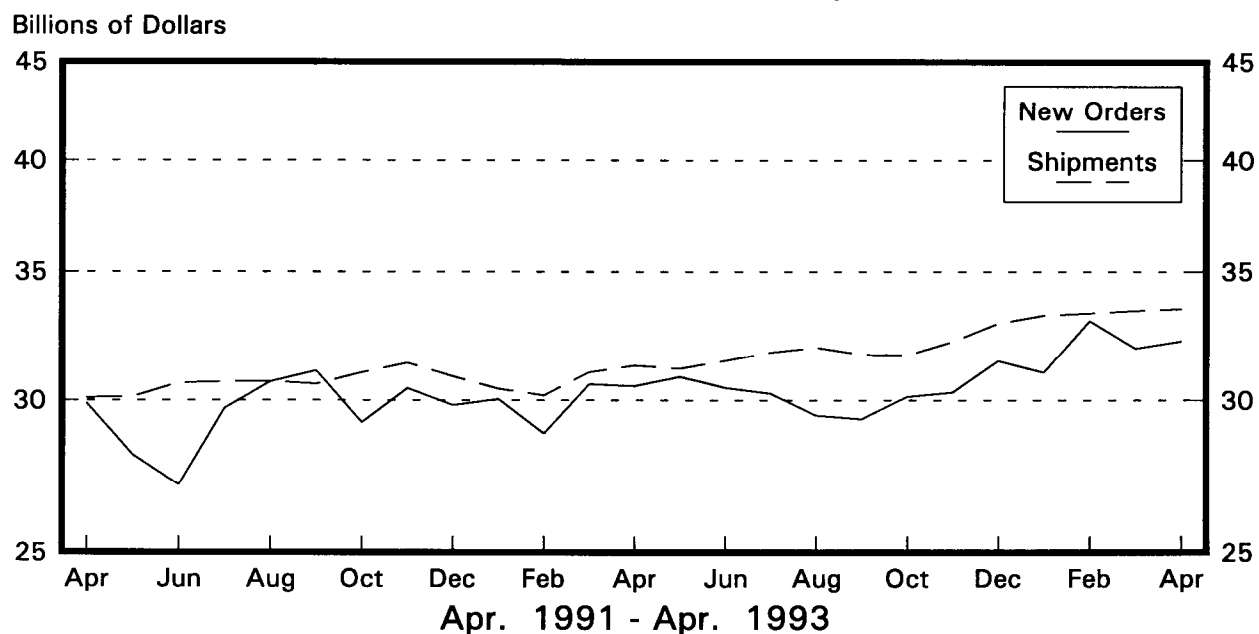
Three Month Moving Averages



Nondefense Capital Goods

New Orders and Shipments

Three Month Moving Averages



Note: All Charts based on seasonally adjusted current dollars.

U.S. Department of Commerce
BUREAU OF THE CENSUS
Washington, D.C. 20233



Official Business

Penalty for Private Use, \$300

POSTAGE AND FEES PAID
U.S. DEPARTMENT OF COMMERCE

COM-21

First Class Mail

NOTICE

Revised historical data for Manufacturers' Shipments, Inventories, and Orders will be issued in mid-June. The primary purpose of the revision is to benchmark the data to the 1991 Annual Survey of Manufactures. Less significant revisions will reflect the addition of data received too late to include in the monthly press releases, corrections for misclassified reports, and updating the trading day adjustment methodology. Revisions related to benchmarking affect all industry categories.

Any questions regarding this announcement can be answered by calling Steve Andrews on (301) 763-2502.

