

---

---

**UNITED STATES DEPARTMENT OF  
COMMERCE  
NEWS** WASHINGTON, D.C. 20230

---

---

**ECONOMICS  
AND  
STATISTICS  
ADMINISTRATION**

**BUREAU OF THE  
CENSUS**

Bureau of the Census  
Steve Andrews or Kathy Menth  
(301) 763-2502 or (301) 763-2575  
M3-1(92)-11

For Release 8:30 A.M. EST  
December 23, 1992  
CB92-271

**ADVANCE REPORT ON DURABLE GOODS MANUFACTURERS' SHIPMENTS AND ORDERS  
November 1992**

(All figures in text below are in seasonally adjusted current dollars)

**New Orders**

New orders for manufactured durable goods in November decreased \$2.4 billion or 1.9 percent to \$122.9 billion, the Department of Commerce, Bureau of the Census reported today. This follows increases of 4.6 percent in October and 0.4 percent in September. Excluding defense, new orders were down \$1.9 billion or 1.6 percent. New orders without transportation equipment increased \$0.9 billion or 1.0 percent.

Transportation equipment had the largest decrease, down \$3.3 billion or 10.2 percent to \$29.2 billion, as a decrease in aircraft and parts more than offset an increase in motor vehicles and parts. This follows a 21.3 percent increase in October. Electronic and other electrical equipment was down \$0.7 billion or 3.5 percent to \$18.2 billion. Industrial machinery and equipment had the largest increase, up \$1.0 billion or 4.6 percent to \$21.6 billion, following a 2.7 percent decline in October.

**Shipments**

Shipments of durable goods in November increased \$2.4 billion or 1.9 percent to \$127.5 billion, following a 0.2 percent decrease in October. Excluding defense, shipments were up \$2.5 billion or 2.1 percent. Without transportation equipment, shipments increased \$1.1 billion or 1.2 percent. Transportation equipment had the largest increase, up \$1.3 billion or 3.9 percent to \$33.7 billion, due to motor vehicles and parts and aircraft and parts. Industrial machinery and equipment was up \$1.2 billion or 5.7 percent to \$21.9 billion. The largest decrease was in electronic and other electrical equipment, down \$0.3 billion or 1.7 percent to \$18.2 billion.

**Unfilled Orders**

Unfilled orders for durable goods in November decreased \$4.6 billion or 1.0 percent to \$448.7 billion, the lowest level since \$440.7 billion in November 1988. This is the fourteenth decline in the last fifteen months. Excluding defense, unfilled orders were down \$4.1 billion or 1.3 percent. Without transportation equipment, unfilled orders declined \$0.1 billion. The largest decrease was in transportation equipment, down \$4.5 billion or 1.8 percent to \$244.7 billion, due to aircraft and parts and shipbuilding and tanks. Transportation equipment has declined in thirteen of the last fifteen months and is at the lowest level since \$243.1 billion in September 1989. Primary metals was down \$0.4 billion or 2.2 percent to \$19.5 billion, and industrial machinery and equipment declined \$0.3 billion or 0.6 percent to \$50.9 billion.

**Capital Goods Industries**

New orders for nondefense capital goods in November decreased \$3.1 billion or 9.7 percent to \$28.6 billion. The November decrease follows a 3.5 percent increase in October. Shipments were up \$1.0 billion or 3.2 percent to \$32.8 billion, following a 1.0 percent decrease in October. Unfilled orders, down \$4.2 billion or 1.9 percent to \$219.4 billion, have declined for eight consecutive months and are at the lowest level since December 1989. Excluding aircraft and parts, nondefense new orders increased 0.3 percent, shipments were up 2.1 percent, and unfilled orders declined 0.7 percent.

New orders for defense were down \$0.5 billion or 6.8 percent to \$7.0 billion as decreases in aircraft and parts and communication equipment more than offset an increase in search and navigation equipment. The November decrease follows a 44.4 percent increase in October. Shipments decreased \$0.1 billion or 1.5 percent to \$7.5 billion, following an 8.6 percent decrease in October. Unfilled orders declined \$0.5 billion or 0.4 percent to \$127.8 billion. Unfilled orders have declined in fourteen of the last fifteen months and are at the lowest level since \$123.2 billion in February 1984.

This report presents advance information on two key business indicators: durable goods manufacturers' shipments and orders. Revised and more detailed estimates plus nondurable goods and inventory data will be published December 31, 1992. The advance report on durable goods for January is scheduled for January 29, 1993. This report is available on the day of issue through the Department of Commerce's online Economic Bulletin Board (N-8-1) (202-482-3870) and through the Census Bureau's online information service-CENDATA. Further information about accessing CENDATA can be obtained from Dialog Information Services, Inc. (1-800-334-2464) and CompuServe (1-800-848-8199). The CENDATA staff at the Bureau of the Census (301-763-2074) can provide contact information and general guidance.

Table 1. DURABLE GOODS MANUFACTURERS' SHIPMENTS AND ORDERS  
(Millions of dollars)

Item	Seasonally adjusted						Not seasonally adjusted <sup>1</sup>			
	Monthly			Percent Change			Monthly			Percent change Nov.92/91
	Nov. 1992 <sup>2</sup>	Oct. 1992 <sup>f</sup>	Sept. 1992	Oct.- Nov. <sup>2</sup>	Sept.- Oct. <sup>f</sup>	Aug.- Sept.	Nov. 1992 <sup>2</sup>	Oct. 1992 <sup>f</sup>	Nov. 1991	
<b>DURABLE GOODS</b>										
<b>Total :</b>										
Shipments . . . . .	127,516	125,132	125,346	+1.9	-0.2	+1.6	127,489	131,374	122,547	+4.0
New orders . . . . .	122,899	125,288	119,801	-1.9	+4.6	+0.4	123,060	130,449	120,173	+2.4
Unfilled orders . . . . .	448,749	453,366	453,210	-1.0	0.0	-1.2	446,369	450,798	481,821	-7.4
<b>Excluding defense :</b>										
Shipments . . . . .	120,013	117,518	117,017	+2.1	+0.4	+1.2	119,503	123,834	113,411	+5.4
New orders . . . . .	115,939	117,824	114,631	-1.6	+2.8	+1.5	114,732	122,540	113,776	+0.8
Unfilled orders . . . . .	320,946	325,020	324,714	-1.3	+0.1	-0.7	318,337	323,108	339,265	-6.2
<b>With unfilled orders :</b>										
Shipments . . . . .	103,436	102,017	102,758	+1.4	-0.7	+2.1	103,730	105,669	101,113	+2.6
New orders . . . . .	98,819	102,173	97,213	-3.3	+5.1	+0.6	99,301	104,744	98,739	+0.6
<b>Primary metals :</b>										
Shipments . . . . .	10,925	10,749	10,878	+1.6	-1.2	-0.4	10,815	11,372	10,685	+1.2
New orders . . . . .	10,486	10,389	9,885	+0.9	+5.1	-11.3	10,608	10,537	10,617	-0.1
Unfilled orders . . . . .	19,499	19,938	20,298	-2.2	-1.8	-4.7	18,844	19,051	21,126	-10.8
<b>Industrial machinery and equipment :</b>										
Shipments . . . . .	21,909	20,721	21,060	+5.7	-1.6	+0.6	21,150	20,743	19,579	+8.0
New orders . . . . .	21,599	20,648	21,222	+4.6	-2.7	+3.3	20,935	20,679	19,154	+9.3
Unfilled orders . . . . .	50,949	51,259	51,332	-0.6	-0.1	+0.3	50,909	51,124	53,914	-5.6
<b>Electronic and other electrical equipment :</b>										
Shipments . . . . .	18,203	18,524	18,199	-1.7	+1.8	+5.2	18,745	18,638	17,751	+5.6
New orders . . . . .	18,245	18,905	18,488	-3.5	+2.3	+6.6	18,650	19,025	17,432	+7.0
Unfilled orders . . . . .	42,719	42,677	42,296	+0.1	+0.9	+0.7	42,263	42,358	41,433	+2.0
<b>Transportation equipment :</b>										
Shipments . . . . .	33,712	32,455	31,579	+3.9	+2.8	-0.3	34,109	35,234	32,960	+3.5
New orders . . . . .	29,196	32,517	26,814	-10.2	+21.3	-5.6	30,385	35,557	33,514	-9.3
Unfilled orders . . . . .	244,726	249,242	249,180	-1.8	0.0	-1.9	244,917	248,641	270,348	-9.4
<b>CAPITAL GOODS INDUSTRIES<sup>3</sup></b>										
<b>Total :</b>										
Shipments . . . . .	40,258	39,340	40,362	+2.3	-2.5	+3.7	39,671	38,310	39,725	-0.1
New orders . . . . .	35,523	39,099	35,741	-9.1	+9.4	+3.3	35,927	38,517	38,651	-7.0
Unfilled orders . . . . .	347,179	351,914	352,155	-1.3	-0.1	-1.3	347,408	351,152	380,028	-8.6
<b>Nondefense :</b>										
Shipments . . . . .	32,755	31,726	32,033	+3.2	-1.0	+2.8	31,685	30,770	30,589	+3.6
New orders . . . . .	28,563	31,635	30,571	-9.7	+3.5	+8.6	27,599	30,608	32,254	-14.4
Unfilled orders . . . . .	219,376	223,568	223,659	-1.9	0.0	-0.6	219,376	223,462	237,472	-7.6
<b>Excluding aircraft and parts :</b>										
Shipments . . . . .	26,520	25,970	26,467	+2.1	-1.9	+3.4	25,716	25,432	24,129	+6.6
New orders . . . . .	25,993	25,920	26,385	+0.3	-1.8	+6.5	25,295	25,311	23,435	+7.9
Unfilled orders . . . . .	72,298	72,825	72,875	-0.7	-0.1	-0.1	72,298	72,719	75,600	-4.4
<b>Defense :</b>										
Shipments . . . . .	7,503	7,614	8,329	-1.5	-8.6	+7.6	7,986	7,540	9,136	-12.6
New orders . . . . .	6,960	7,464	5,170	-6.8	+44.4	-20.0	8,328	7,909	6,397	+30.2
Unfilled orders . . . . .	127,803	128,346	128,496	-0.4	-0.1	-2.4	128,032	127,690	142,556	-10.2

(NA) Not available. <sup>f</sup> Revised.

<sup>1</sup> Shipments and new orders are the totals for the period and are adjusted for trading-day and calendar-month variations; unfilled orders are as of the end of the period and are not adjusted for trading-day or calendar-month variations.

<sup>2</sup> Based on advance sample.

<sup>3</sup> The Capital Goods Industries include Nondefense : ordnance and accessories, steam engines and turbines, internal combustion engines, construction mining and material handling equipment, metalworking machinery, special industry machinery, general industrial machinery, computer and office equipment, refrigeration, heating and service industry machinery, electrical transmission and distribution equipment, electrical industrial apparatus, communication equipment, complete aircraft, missiles, and space vehicles, aircraft missiles, and space vehicle engines and parts, ships and tank components, railroad equipment, and search and navigation equipment.

Defense capital goods include : ordnance, communication equipment, aircraft, missiles, space vehicles, and parts, ships, tanks and tank components, search and navigation equipment.

Table 2. AVERAGE REVISIONS TO PREVIOUSLY PUBLISHED MONTHLY PERCENT CHANGES  
(Based on seasonally adjusted data)

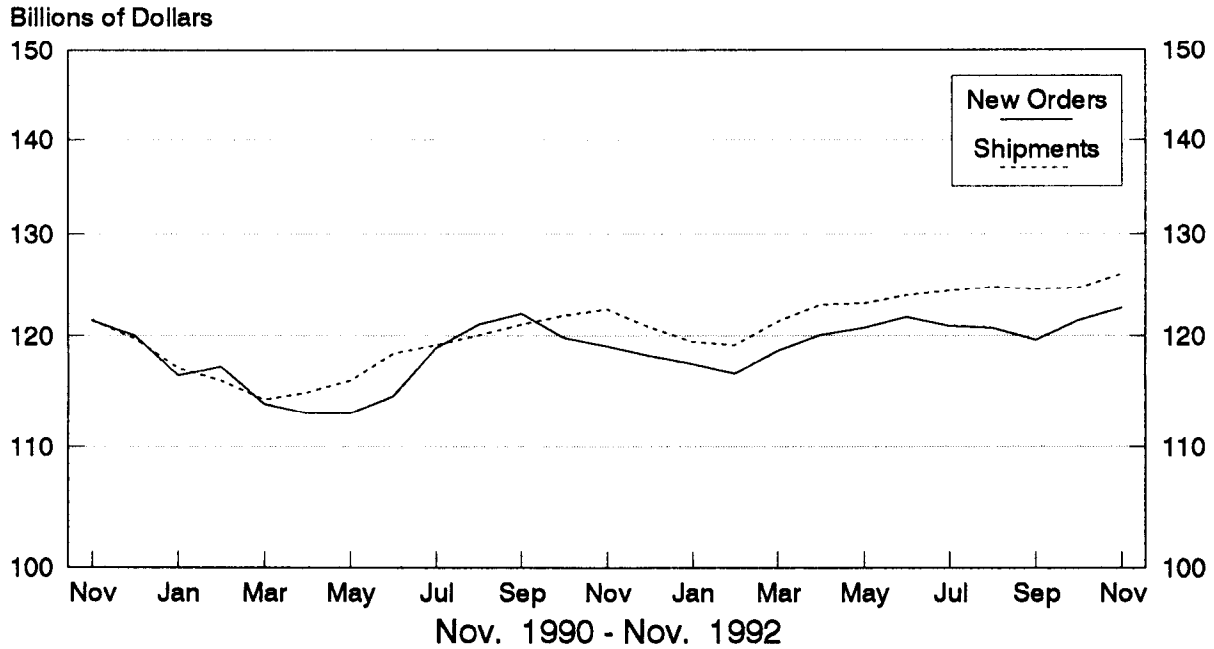
Industry	Shipments			New Orders			Unfilled Orders		
	Year ago Nov. 1991	Nov. 1987-1991	Nov. 1991- Oct. 1992	Year ago Nov. 1991	Nov. 1987-1991	Nov. 1991- Oct. 1992	Year ago Nov. 1991	Nov. 1987-1991	Nov. 1991- Oct. 1992
Durable goods . . . . .	0.0	0.1	0.3	0.2	0.3	0.7	0.1	0.1	0.1
Primary metals . . . . .	0.4	0.7	0.2	0.6	0.9	0.8	0.1	0.2	0.3
Industrial machinery and equipment . . . . .	0.2	0.9	0.7	0.5	0.9	0.9	0.3	0.3	0.2
Electronic and other electrical equipment . . . . .	0.4	0.3	0.6	0.2	0.5	0.8	0.1	0.1	0.1
Transportation equipment . . . . .	0.4	0.3	0.7	0.4	0.3	1.7	0.0	0.0	0.2
Nondefense capital goods . . . . .	0.2	0.3	0.8	0.4	0.5	1.6	0.1	0.1	0.2
Defense capital goods . . . . .	0.9	0.9	1.5	1.5	2.4	6.4	0.0	0.1	0.2

Note : The revisions are the differences between the month-to-month percent changes of the advance and final estimates. The monthly averages are the simple averages of the differences, without

# Total Durable Goods

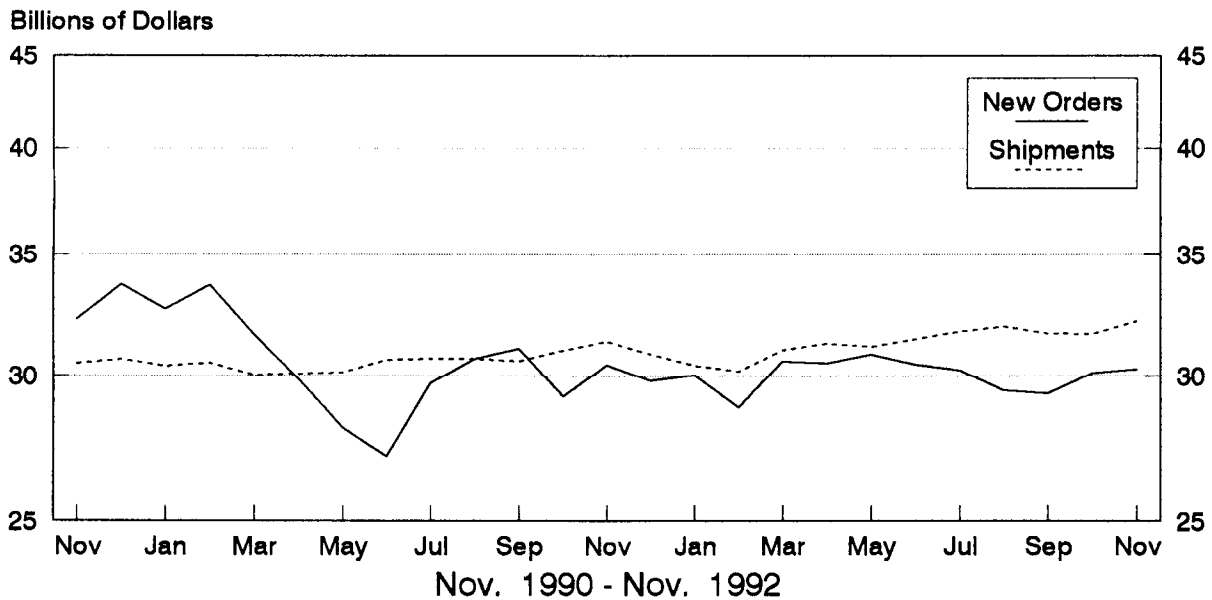
3

New Orders and Shipments  
Three Month Moving Averages



# Nondefense Capital Goods

New Orders and Shipments  
Three Month Moving Averages



Note: All Charts based on seasonally adjusted current dollars.

U.S. Department of Commerce  
BUREAU OF THE CENSUS  
Washington, D.C. 20233



Official Business

Penalty for Private Use, \$300

POSTAGE AND FEES PAID  
U.S. DEPARTMENT OF COMMERCE

COM-21

First Class Mail

PUBLICATION DATES FOR THE 1993 MONTHLY M3 SURVEY  
MANUFACTURERS' SHIPMENTS, INVENTORIES, AND ORDERS

Report Covering	Advance Report Release Dates (8:30 a.m. release time)	Regular Report Release Dates (10:00 a.m. release time)
December 1992	Fri., Jan. 29	Thurs., Feb. 4
January 1993	Wed., Feb. 24	Thurs., Mar. 4
February 1993	Wed., Mar. 24	Wed., Mar. 31
March 1993	Fri., Apr. 23	Fri., Apr. 30
April 1993	Wed., May 26	Fri., June 4
May 1993	Wed., June 23	Wed., June 30
June 1993	Wed., July 28	Thurs., Aug. 5
July 1993	Wed., Aug. 25	Thur., Sept. 2
August 1993	Fri., Sept. 24	Fri., Oct. 1
September 1993	Wed., Oct. 27	Thur., Nov. 4
October 1993	Wed., Nov. 24	Fri., Dec. 3
November 1993	Thur., Dec. 23	

The Manufacturers' Shipments, Inventories, and Orders press release can be faxed to you on the day of issue at a cost of \$120 per year. The fee is to cover the subscription service, wire transmission, and administrative costs. If you wish to subscribe to this service, or would like more information, please call Sandy Sollinger at (301) 763-2604.

