

THE 9 MULTIS AND 5 COMPLICATIONS

Mark M Pierzchala

MMP Survey Services, LLC

www.MMPSurveyServices.com

MMP@MMPSurveyServices.com



Sharing your passion for accurate, efficient surveys!

What is the Title About?

We need an accurate description of the challenges of creating modern-day CASIC surveys.

We know about multi-cultural, multi-lingual, and multi-mode surveys, but I have encountered 9 distinct dimensions (the '9 Multis') that impact survey design and execution.

Then there are 5 complications that particularly impact scientific and governmental survey programs.

This presentation is based on one given at the 17th International Blaise Users Conference in October 2016.

My Point of View

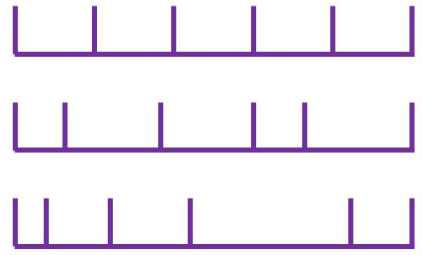
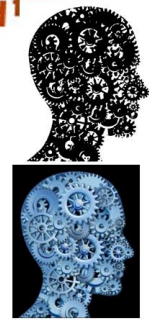
- The next 14 slides show the 9 multis and the 5 complications.
 - Each dimension may cause differences in the fielding of a questionnaire.
 - Each complication may add (a lot of) extra work.
- I'll go through them quickly, just to give you the idea.

The Challenges – 1 of 9 'Multis' Multi-Cultural Surveys

There's differences in



- Understanding
- Values
- Meaning
- Scale spacing



But wait!
It gets worse!



The Challenges – 2 of 9 'Multis' Multi-Device Surveys

Then
there's all
those



Desktops

Laptops

Smartphones

Tablets



But wait!
It gets worse!



The Challenges – 3 of 9 'Multis' Multi-Lingual Surveys

And we have to deal with



- Translations
- Fills
- System texts
- Alphabetic & Asian scripts;
- Left-to-right & Right-to-left languages
- Language switching



But wait!
It gets worse!



The Challenges – 4 of 9 'Multis' Multi-Mode Surveys

Don't get me started on modes!

Modestly Complex Questions Language: English

Next Mode DK RF Code

The challenge here is the high-level classification of choices. This structure comes directly from the paper questionnaire.

Please classify your principal employer.

1 In a non-incorporated business, professional firm, or farm

2 In an incorporated business, professional practice, or farm

3 In a for-profit company or organization

4 In a non-profit organization (including tax-exempt and charitable organizations)

5 In a local government (e.g., city, county, school district)

6 In a state government (including state colleges/universities)

7 In the U.S. military service, active duty or Commissioned Corps (e.g., USPHS, NOAA)

8 In the U.S. government (e.g., civilian employee)

9 Other type of employee, specify

Intro Other principal employer

Education code Kind of employment

Principal employer Other kind of employment

Principal employer high Number

Self-employment Unit

Private employer Number

Government employer Unit

1/5 Interview Split Question ID:Modest



- Interviewing
- Self-administered
- CATI
- CAPI
- Browser
- Survey Management

Modestly Complex Questions Language: English

The challenge here is the high-level classification of choices. This structure comes directly from the paper questionnaire.

Please classify your principal employer.

SELF EMPLOYED or a BUSINESS OWNER

In a non-incorporated business, professional firm, or farm

In an incorporated business, professional practice, or farm

PRIVATE SECTOR employee

In a for-profit company or organization

In a non-profit organization (including tax-exempt and charitable organizations)

GOVERNMENT employee

In a local government (e.g., city, county, school district)

In a state government (including state colleges/universities)

In the U.S. military service, active duty or Commissioned Corps (e.g., USPHS, NOAA)

In the U.S. government (e.g., civilian employee)

OTHER

Other type of employee, specify

Back Next

3/18 PrincipalEmployer Self-Large Question ID:Modest



But wait!
It gets worse!



The Challenges – 5 of 9 'Multis' Multi-National Surveys

And countries have their own



Currency

Flags

Institutions

Social programs

Links

Data formats



Please enter your phone number.

() -

Please enter your phone number.

+ - - -



But wait!
It gets worse!



The Challenges – 6 of 9 'Multis' Multi-Operable Surveys

How do we deal with?



Touch

Gestures

Keyboards

Function keys


Pointing

Scrolling

Screen space

What is the month and day of your birth?

Month Day




of your birth?

Number between 1 and 31

Birth month and day

Month

Day



But wait!
It gets worse!



The Challenges – 7 of 9 'Multis' Multi-Platform Surveys



And all those situations!

Connected

Disconnected

Blocking

Separation of rules from layout

Operating system



But wait!
It gets worse!



The Challenges – 8 of 9 'Multis' Multi-Structural Surveys

And we
obsess
about:



Visual vs aural
presentation

Answering

Memory
demands

Linear vs
non-linear
cognitive
processing

Please classify your principal employer.

- Self employed or a business owner
- A private-sector employee
- A government employee
- Another type of employee

Were you . . .

- In a non-incorporated business, p
- In an incorporated business, prof

Was that . . .

- In a for-profit company or organiz
- In a non-profit organization (inclu

Was that . . .

- In a local government (e.g., city,
- In a state government (including
- In the U.S. military service, active
- In the U.S. government (e.g., civilian employee)

What other kind of employment do you have?

WEB/Paper

Please classify your principal employer.

SELF EMPLOYED or a BUSINESS OWNER

- In a non-incorporated business, professional firm, or farm
- In an incorporated business, professional practice, or farm

PRIVATE SECTOR employee

- In a for-profit company or organization
- In a non-profit organization (including tax-exempt and charitable organizations)

GOVERNMENT employee

- In a local government (e.g., city, county, school district)
- In a state government (including state colleges/universities)
- In the U.S. military service, active duty or Commissioned Corps (e.g., USPHS, NOAA)
- In the U.S. government (e.g., civilian employee)

OTHER

- Other type of employee, specify

CATI/CAPI

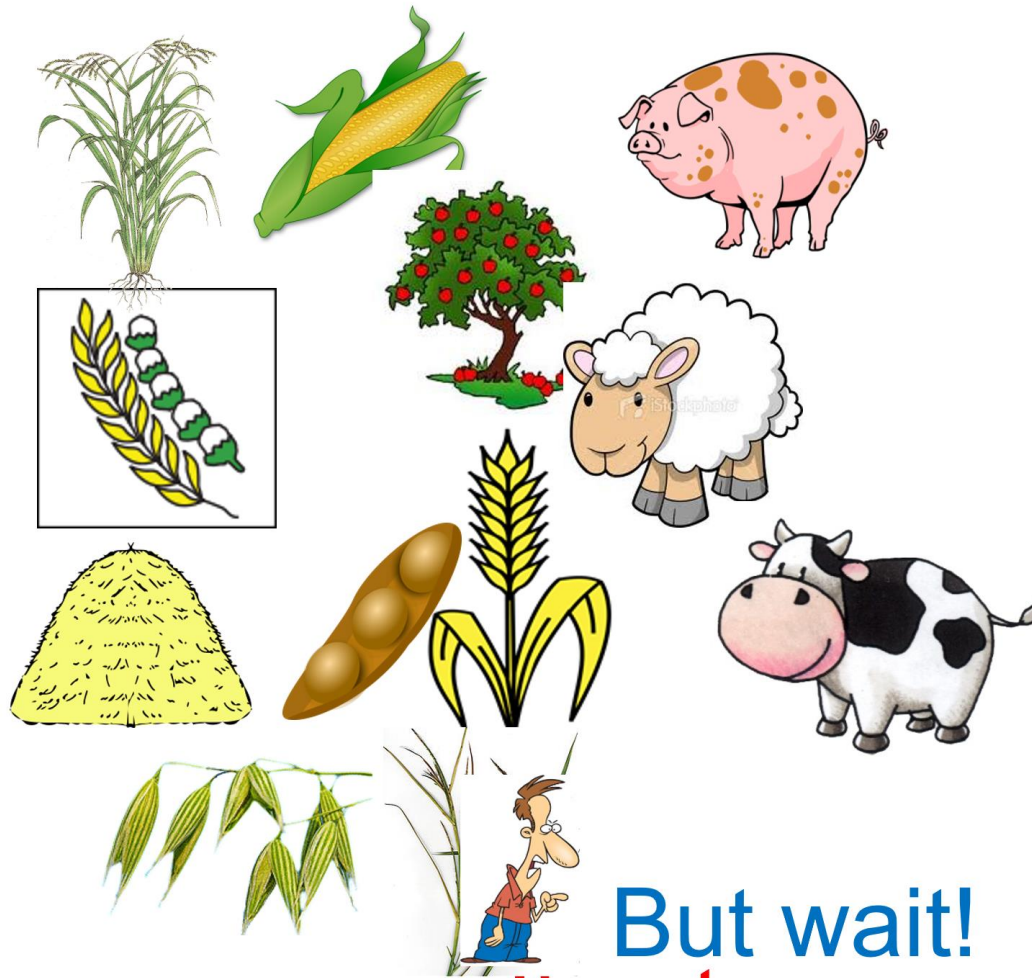


But wait!
It gets worse!



The Challenges – 9 of 9 'Multis' Multi-Version Surveys

And these
are similar
but
different!



Commodities

Industries

Processes

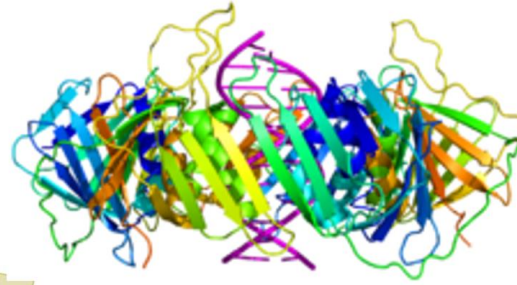
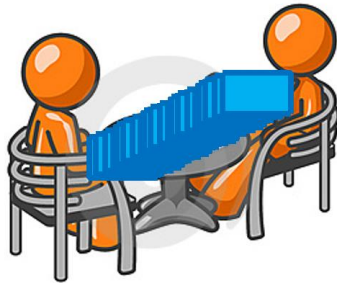
**Variations on
a theme**

**500 versions
of an
industry
survey!?**

But wait!
It gets worse!



Complication 1: Governmental and Scientific Surveys



And the surveys we do!

Long

Complex

Economic

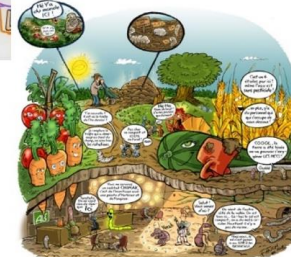
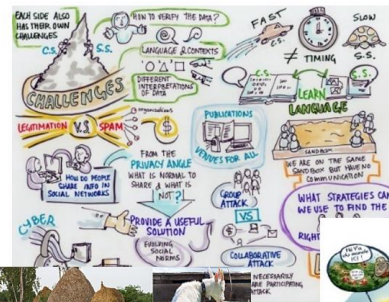
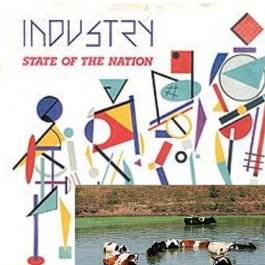
Social

Behavioral

Cross-sectional

Longitudinal

Multi-instrument



**But wait!
It gets worse:**



Complication 2: Operational realities

Legacy surveys and data series!

Paper questionnaires

And on top of all that we have!

Edits across modes!

Device sensors!



But wait!
It gets worse!



Complication 3: Constraints

Not enough time!

Screens are too small!

And what we have to put up with!

Not enough money!



Last minute changes!

Unclear specifications!

Computers are too slow!

You want what?! When?!

**But wait!
It gets worse:**



Complication 4: Methodological and Operational Demands

Audit trails!

Scientific integrity!

Survey Management!

Change strategies!

Increase incentives!

Console the interviewers!

Change the instrument?!



But wait!
It gets worse!



And there is
this!



Complication 5: Accessibility

And there is this!

Blind people

The visually impaired

The motor impaired

The cognitively impaired

On different devices!

With different screen readers and magnifiers!

And how do your fancy screens translate for these people?



**So, what do we do?
As a profession?**



The Points

- Modern-day surveys are very hard
- No single person has all the answers
- No single organization has the resources
- Specification, development, and testing are daunting

- Structure based approach to specification
 - And to methodological research

- The industry has to coordinate the research

The Goal: Structure-based approach

- A question writer focuses on:
 - Questions and content
 - Naming structures
- A question writer does not:
 - Design for one mode then another
 - Obsess about layout
- The result is an instrument that is multi-everything
 - Desktop – laptop
 - Browser – app
 - Tablet – smart phone – vertical or horizontal orientation



What is the month and day of your birth?

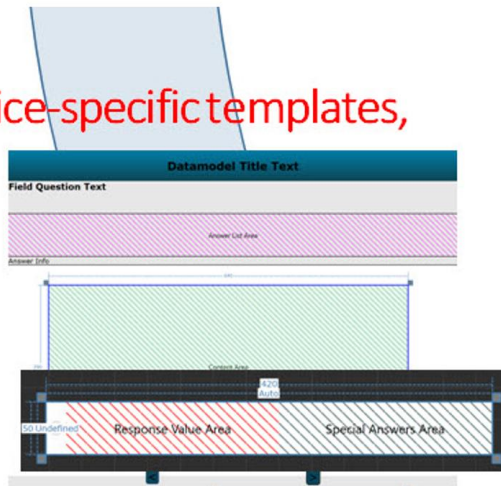
Specify once

INTERVIEWER: Enter month first then day.



and standard platform settings.

Standard device-specific templates,



Magic

and standard multimode keywords and languages,

```
ROLES =
  Help "Help",
  ToolTip "Tool tip hint",
  ScReader "Screen reader text",
  StatVar "Stat vars",
  CategoryGroup "To",
  Entity "Relational",
  Watermark "Data er",
  FormLabel "Form pa",
  IntInstr "Intervie"
```

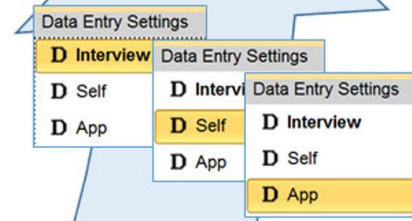
```
SPECIALANSWERS =
  NA "Not applicable",
  OoR "Out of range"
```

```
MODES =
  Self "Self",
  Interview "Interview",
  Data "Data"
```

```
SPECIALANSWERSETS
  NotApplicable = NA
  EmptyAllowed = Self : EMPTY
  Interview: DK, RF
  Data : DK, RF, NA, OoR
```

```
LANGUAGES =
  ENG "English",
  FRA "Français",
  NED "Nederlands",
```

```
עבר",
  ληνικά"
```



- Checks and Signals
- Route
- Rules Behavior
- Server Contact
- Culture Source
- When To Show Special Answers

Example: Family of Templates

Template for Small screen

Data Structure

What is the month and day of your birth?

Month Day

Tablet

What is the month and day of your birth?

Month Day

Pop-up keyboard

Phone

What is the month and day of your birth?

Month

Day

Pop-up keyboard

Template for medium screen, self administered mode

Template for split-screen, interviewer mode

DK RF

What is the month and day of your birth?

INTERVIEWER: Enter month then day.

1 January 4 April 7 July 10 October
 2 February 5 May 8 August 11 November
 3 March 6 June 9 September 12 December

Birth month and day Car purchase month and year

Month Month
 Day Year

DK RF

What is the month and day of your birth?

INTERVIEWER: Enter day.

Number between 1 and 31

Birth month and day Car purchase month and year

Month Month
 Day Year

Example 2: Data Structure

This is another data structure.

What is the highest level of education you have attained?

Choose one answer.

- Elementary school
- Some high school
- Graduated high school
- Some college
- Graduated college
- Some graduate school
- Masters or higher degree

From a CASIC design perspective these two questions should be handled the same.

It is a manifestation of:

Question text

Instruction

- Ordered choice 1
- Ordered choice 2
- *
- *
- Ordered choice n

What is your age range?

Please choose one.

- 21 – 30 years old
- 31 – 40 [years old]
- 41 – 50 [years old]
- 51 – 60 [years old], or
- 61 – 70 [years old]

In Conclusion

- Methods research is not keeping up with technology
- Methods research should focus on making question structures work across the 9 Multis
- I don't think unimode design works for many structures
 - Though I hate to say this
- I do think we need to rely on cognitive equivalence for question design (generalized mode design)
 - But do the research on question structures

In Conclusion

- Mark M Pierzchala
- MMP@MMPSurveyServices.com
- References:
 - De Leeuw, E. D. (2005). To Mix or Not to Mix Data Collection Modes in Surveys. *Journal of Official Statistics*, 21, 2, 233-255.
 - Dillman, D. A., Smyth, J. D., and Christian, L. M. (2014). *Internet, Phone, Mail, and Mixed-Mode Surveys: The Tailored Design Method*, 4th Edition. New York: John Wiley & Sons.
 - Pierzchala, Mark (2016). Blaise 5 is Worth the Wait. In *Proceedings of the 17th International Blaise Users Conference 2016*. The Hague, The Netherlands: Statistics Netherlands. [www.blaiseusers.org/2016/papers/plen2_3.pdf]
 - Pierzchala, Mark (2006). Disparate Modes and Their Effect on Instrument Design. In *Proceedings of the 10th International Blaise Users Conference 2006*. Arnhem, The Netherlands: Statistics Netherlands. [www.blaiseusers.org/2006/Papers/207.pdf]
 - Pierzchala, M., Wright, D., Wilson, C., and Guerino, P (2004). Instrument Design for a Blaise Multimode Web, CATI, and Paper Survey. In *Proceedings of the 9th International Blaise Users Conference 2004*. Gatineau, Canada: Statistics Canada. [www.blaiseusers.org/2004/papers/24.pdf]