

2016 Annual Refiling Survey Speedup

Jake Kane, Mark Sauer, & Dipak Subedi

Economists

Quarterly Census of Employment and Wages
Data Collection Branch

BLS Office of Employment and Unemployment Statistics

FedCASIC 2016

May 3, 2016

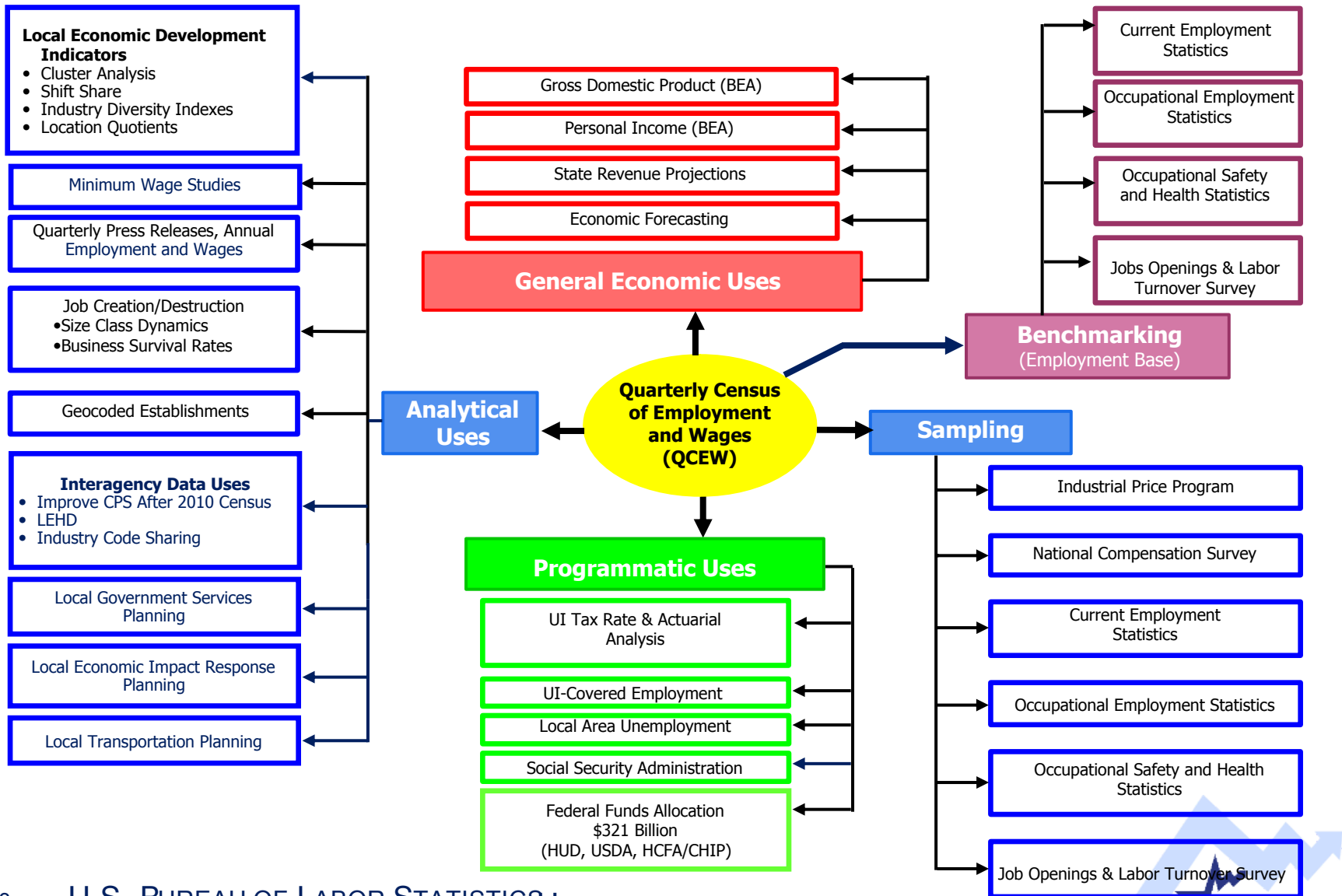


Background

- The Quarterly Census of Employment and Wages (QCEW) program is a cooperative program involving the Bureau of Labor Statistics and the States.
- The QCEW program is a comprehensive and accurate source of monthly employment and quarterly wages data, by industry, at the national, State, and county levels.



QCEW Data Uses



Annual Refiling Survey (ARS) Background

- Used in conjunction with the UI tax-reporting system in each State so that changes in the industrial and geographical compositions of our economy are captured in a timely manner and reflected in BLS statistical programs.



Annual Refiling Survey (ARS) Background - Continued

- Approximately 9.8 million establishments on file.
- Roughly one-third of private sector establishments are reviewed and updated each year, if necessary.
 - ④ Verify and update establishment mailing addresses, physical locations including counties, and their main business activities

Data Logistics

Past

- Files from individual States/decentralized control
- ARS production began in October



Data Logistics

New Approach

- Centralized
- Use of Quarterly Unemployment Insurance Files
- ARS production begins in July

ARS File Creation Process

PAST		CURRENT	
Activity	Timing	Activity	Timing
1. ARS Selection criteria	April Week 4	1. Q1 files due from States	July Week 3
2. State systems programming	May-July	2. QCEW/DCB creates control files and print files	July Week 4
3. State testing of ARS criteria	August	3. ARS Email Blast 1	Aug. Week 1-4
4. State systems release	Sept. Week 1	4. Print Files to Contractor	Aug. Week 4
First Mailing			
5. Control File Creation	Sept. Week 2		
6. States Create ARS print files	Sept. Week 3		
7. QCEW/DCB reviews print files/loads them	Sept. Week 4	5. Printing and Mailing Complete	Sept. Week 4
8. ARS Email Blast 1	Oct. Week 1-2		
9. Print Files to Contractor	Oct. Week 3	6. ARS Email Blast 2	Nov. Week 1-4
10. Printing and Mailing Complete	Nov. Week 3	7. DCB sends second mailing print files to contractor	Dec. Week 2
Second Mailing			
11. ARS Email Blast 2	Jan. Week 3-4	8. Printing and Mailing Complete	Jan. Week 2
12. States Create 2 nd mailing Print Files	Jan. Week 4		
13. DCB reviews print Files/loads ARS Web	Feb. Week 1		
14. Print Files to Contractor	Feb. Week 2	9. ARS Email Blast 3	Feb. Week 3-4
15. Printing and Mailing Complete	Mar. Week 2	10. DCB sends third mailing print files to contractor	March Week 1
Third Mailing			
16. ARS Email Blast 3	Apr. Week 1-2	11. Printing and Mailing Complete	April Week 1
17. States Create 3 rd mailing Print Files	Apr. Week 3		
18. DCB reviews print Files/loads ARS Web	Apr. Week 4		
19. Print Files to Contractor	Apr. Week 4		
20. Printing and Mailing Complete	May Week 4		



Data Logistics

Steps eliminated with new process:

- Developer programming and testing of new ARS selection criteria
- State review and testing of ARS selection criteria
- State ARS Control File creation
- State ARS Production file creation for multiple mailings

Data Logistics

Benefits

- Resource improvement
- More time to process ARS data
- Reduced programming time for developers allows them to focus on other areas

Advantages with New Process:

- Time savings on the ARS translates to additional time for data quality improvements.
- ARS response rate goals are being achieved earlier in the year.
 - ④ 38 States already achieved their FY 2016 goals!
- ARS activities starting earlier allows more time for other QCEW-related work.

Data Collected

- Address changes
 - ④ Business mailing address and physical location address
- County/Township changes
- Single to multiple worksites
- NAICS changes
- Less burdensome for employers to make changes to existing information using web

Move to Quarterly Cycle?

- ARS timeline was expedited.
- Data collection costs and reliance on paper forms was reduced.
- Changes could make it possible to collect ARS responses more rapidly and earlier than previously.

Why Move to Quarterly?

- A quarterly cycle would allow us to select representative sample panels each quarter.
- A quarterly ARS would more closely align with other QCEW processes.
- A quarterly ARS could increase the profile of the QCEW program and increase our value to the statistical community.

Contact Information

Jake Kane

202-691-6492

kane.jake@bls.gov

Mark Sauer

202-691-6492

sauer.mark@bls.gov

Dipak Subedi

202-691-6453

subedi.dipak@bls.gov

