



Applying Technology Solutions to Improve Federal Program Evaluation and Performance Monitoring

Brad Epley, ICF International

Fed CASIC – March 5th, 2015

Program Evaluation and Performance Monitoring

□ Evaluation and Monitoring Benefits

- Generate vital information on program performance and provide insights for program improvement and future planning



□ Key to Program Evaluation Success - High Quality Data

- The assurance of data quality increases data acceptance
- Data acceptance is critical to buy-in from your stakeholders
 - Stakeholders must trust the resulting data
 - Without stakeholder acceptance you have little chance of implementing your findings

Challenges From an IT Perspective

❑ Evaluation: It's Research not an IT Exercise

- Data collection, management, and reporting are key activities informing evaluation studies
- Implementing the technology infrastructure is not always considered a core activity

❑ With the Right Balance, IT Is a Critical Tool

- #1 recommendation: Provide IT staff a seat at the table during evaluation design
- Not the driver but a part of the planning process
 - Evaluators and SMEs working closely with IT teams to identify DC/DM needs
 - Weigh up-front IT costs with savings and benefits during implementation

Evaluation Challenges That IT Can Help Solve

□ Data Quality

- Integrate data quality procedures for data collection, management and monitoring
 - Front-end validations
 - Identify data inconsistencies across dataset
 - Automatically flag and marked for remediation
 - Monitor data submissions
 - Track against built in schedules (calendars, automate system reminders)

- Ensure credible and high-quality study results that are:
 - Accurate
 - Complete
 - Timely

Evaluation Challenges That IT Can Help Solve

❑ Methodology Adaptations During Implementation

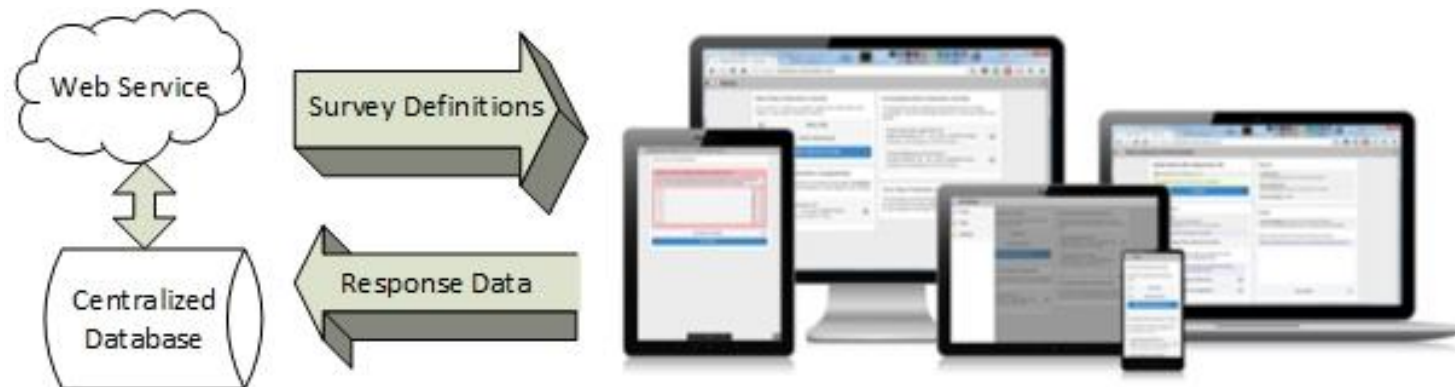
- As evaluation designs are implemented, protocols must adapt to evolving needs
 - Collect additional data points
 - Increase response rates
 - Reach different and/or hard-to-reach respondents
 - Shrinking budgets

- Having a flexible IT system that allows changes to be implemented and rolled out without major re-development is critical

Components of Flexible Technology Solutions

❑ Multi-Modal Data Collection

- Metadata driven applications that can support multiple modes of data collection
 - Web-based
 - Computer-Assisted (CAPI, CASI, A-CASI, CARI, CATI)
 - Mobile (Native, Hybrid, Mobile Web)



Components of Flexible Technology Solutions

❑ Flexible Dissemination Features

- Mixed reporting to fit all levels of stakeholders
 - Dashboards
 - Canned Reporting
 - OLAP
- Data export features for offline analysis in statistical packages (SAS, SPSS, etc.)
- Web APIs

❑ Responsive Web Design (RWD)

- “Mobile First” Web design and coding approach
- Supports optimal viewing and navigation across multiple devices
- Media queries automatically adjust the style based on the device
- Avoid scrolling and zooming on small devices

Components of Flexible Technology Solutions

☐ Responsive Web Design Example #1

– Likert Scale Survey Questions: Desktop view

The following questions ask about your feelings about using new types of services and interventions for mental health and drug abuse problems among students. In these questions manualized services, treatment, or intervention refers to any intervention that has specific guidelines and/or components that are outlined in a manual and/or that are to be followed in a structured or predetermined way. Please indicate the extent to which you agree with each item.	Not at All	To a Slight Extent	To a Moderate Extent	To a Great Extent	To a Very Great Extent
1. I like to use new types of services / interventions to help my students.	<input type="radio"/>	<input type="radio"/>	<input type="radio"/>	<input type="radio"/>	<input type="radio"/>
2. I am willing to try new types of services/interventions even if I have to follow a treatment manual.	<input type="radio"/>	<input type="radio"/>	<input type="radio"/>	<input type="radio"/>	<input type="radio"/>
3. I know better than academic researchers how to care for my students.	<input type="radio"/>	<input type="radio"/>	<input type="radio"/>	<input type="radio"/>	<input type="radio"/>

– Smartphone view

The following questions ask about your feelings about using new types of services and interventions for mental health and drug abuse problems among students. In these questions manualized services, treatment, or intervention refers to any intervention that has specific guidelines and/or components that are outlined in a manual and/or that are to be followed in a structured or predetermined way. Please indicate the extent to which you agree with each item.

1. I like to use new types of services / interventions to help my students.

Not at all

2. I am willing to try new types of services/interventions even if I have to follow a treatment manual.

Not at all

3. I know better than academic researchers how to care for my students.

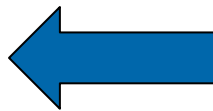
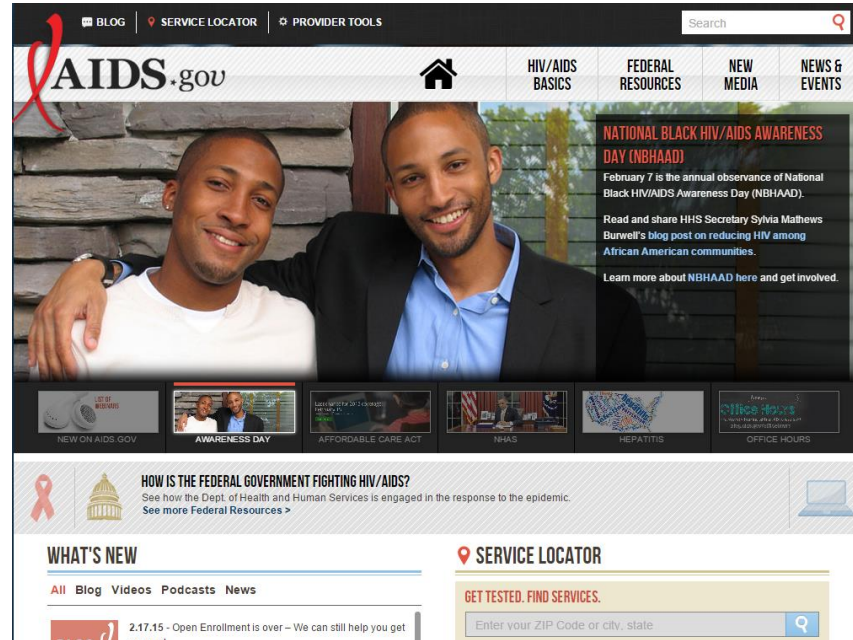
Not at all

Components of Flexible Technology Solutions

☐ Responsive Web Design Example #2

- Website Homepage

Desktop view



Smartphone view

Case Study

□ NCTSI Evaluation

– Challenges

- Developing a solution that could replace four existing systems and support several data collection needs
- Support multi-modal data collection
 - Evaluation data - Web-based, CAPI and A-CASI surveys
 - » Increase comfort level of interviewees when disclosing sensitive behaviors
 - » Maximize participation and reduce quit rate
 - Performance monitoring – Web-based forms and MIS uploads
 - Clinical Data – Web-based only (office setting)
 - » Incorporate real-time data processing and reporting of clinical data for providers
 - » Integrate data collection procedures into providers daily routines

Case Study

□ NCTSI Evaluation

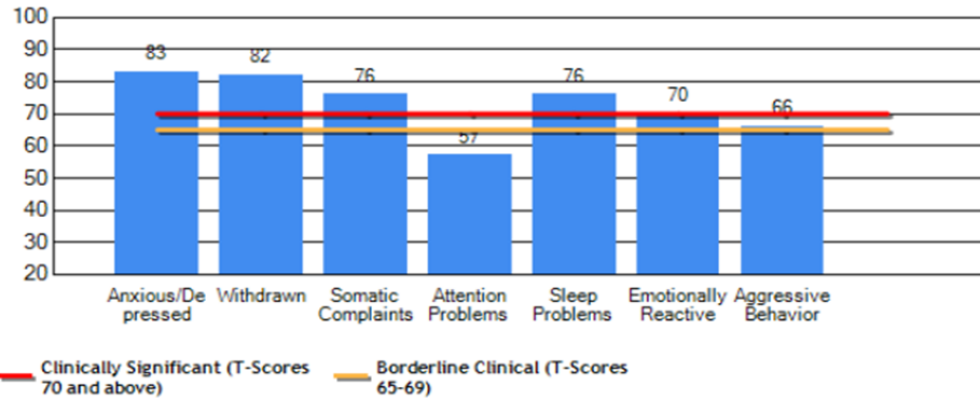
- Developed a single system to support all data collection and reporting needs that provided:
 - “One-stop” shop for all NCTSI data
 - Consistent data quality procedures
 - Average annual system cost savings of up to 60% in out years
 - Maintaining single system architecture
 - Associated cost savings:
 - More in-depth analysis of program evaluation results
 - Implementation of program improvements
 - Granted providers instant access to reports that provided clinical benefits

Case Study



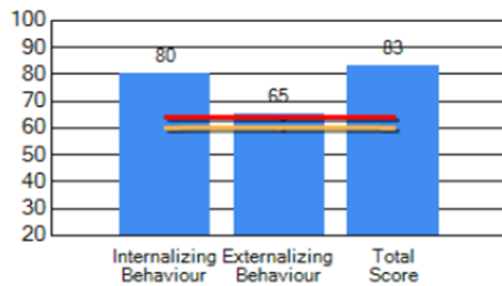
CBCL/1½-5 Syndrome Scale Scores

CBCL Problem Scale - T-Scores



	Anxious/Depressed	Withdrawn	Somatic Complaints	Attention Problems	Sleep Problems	Emotionally Reactive	Aggressive Behavior
Total Score	12	10	10	4	10	9	22
T Score	83	82	76	57	76	70	66
Percentile	>97	>97	>97	76	>97	>97	95
Clinical Range	C	C	C		C	C	B

CBCL Problem Scale - T-Scores

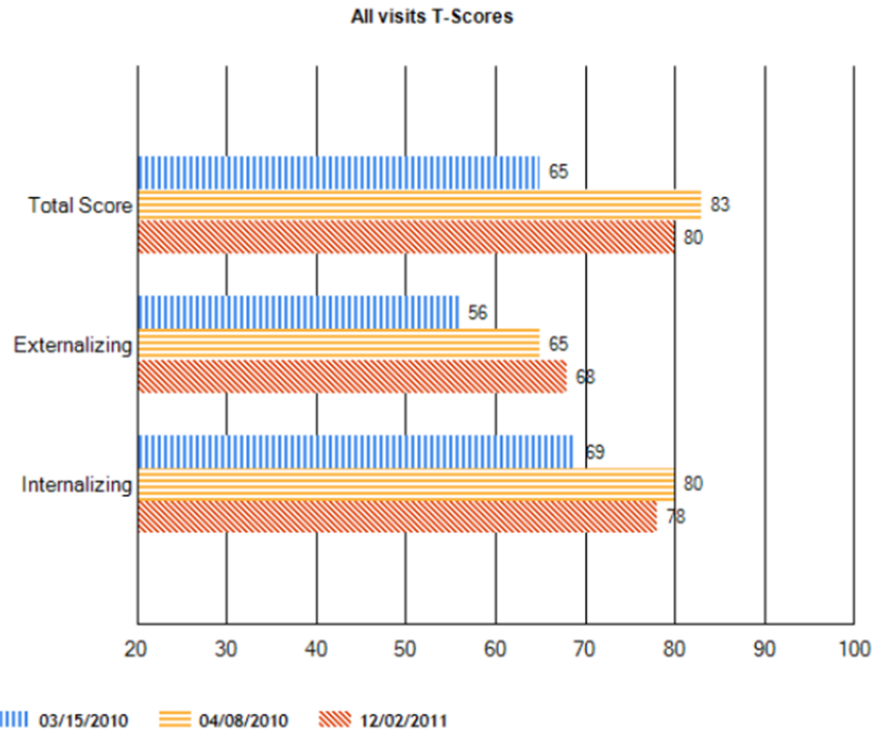


	Internalizing Behaviour	Externalizing Behaviour	Total Score
Total Score	41	26	114
T Score	80	65	83
Percentile	>97	93	>97
Clinical Range	C	C	C

Case Study



CBCL All Visits



	03/15/2010	04/08/2010	12/02/2011
Internalizing Behaviour			
T Score	69	80	78
Clinical Range	Clinical	Clinical	Clinical
Externalizing Behavior			
T Score	56	65	68
Clinical Range	Normal	Clinical	Clinical
Total Score			
T Score	65	83	80
Clinical Range	Clinical	Clinical	Clinical

Final Thoughts

□ Summary

- IT systems provide critical data for subsequent analysis by evaluators
- This subsequent analysis generates information that helps drive policy and funding decisions
- With proper planning, adaptable technology solutions that deliver high-quality data can provide a foundation upon which program evaluation and performance monitoring aims can be realized

Contact Info

Questions or Additional Discussion

- Brad Epley
- Bradley.Epley@icfi.com