



THE OHIO STATE UNIVERSITY

State-Level Big Data: Ohio Longitudinal Data Archive

Kristin Harlow, Research Associate

Randy Olsen, Director

Center for Human Resource Research

FedCASIC, March 6, 2015



Agenda

1. Ohio Longitudinal Data Archive
2. Data Access
3. Research Examples

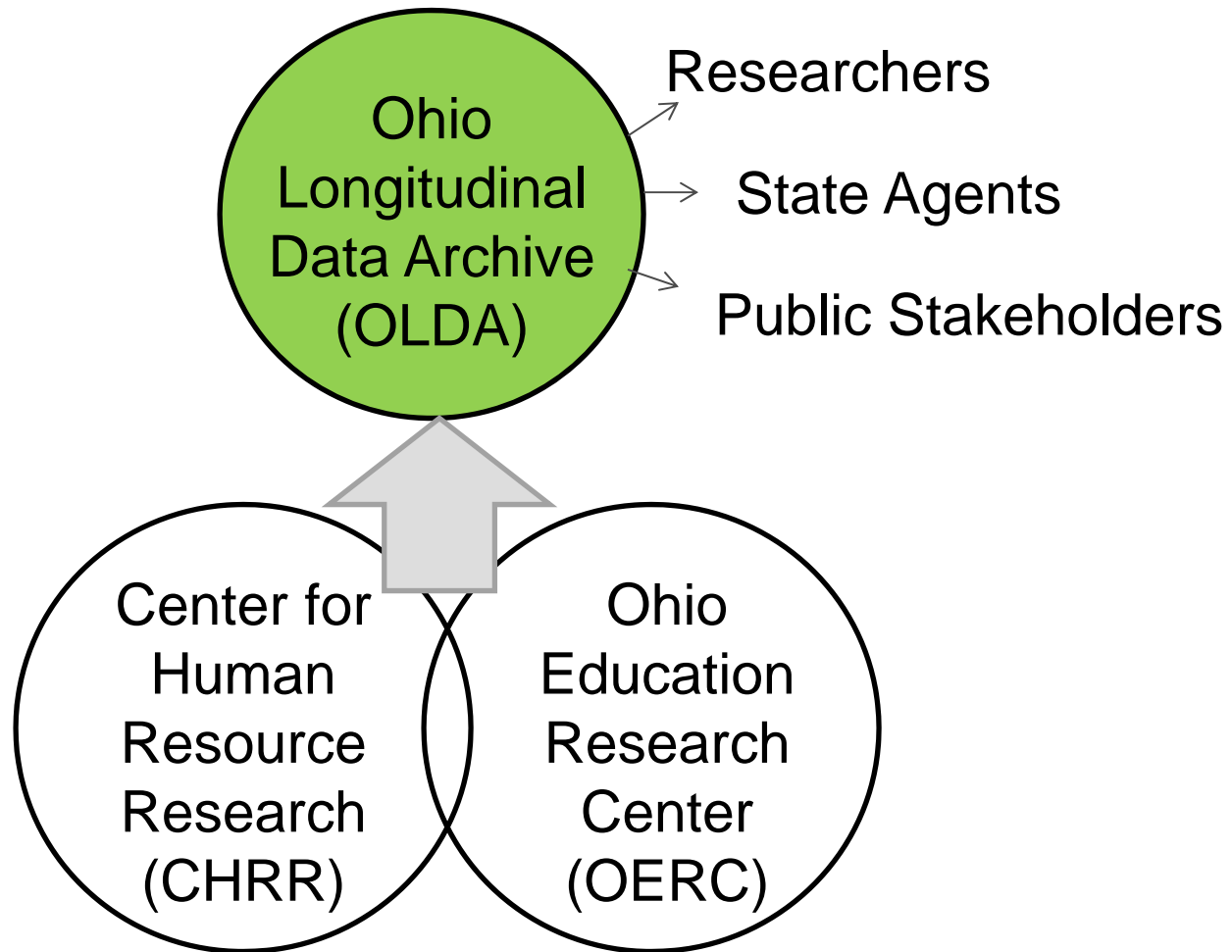


Workforce Data Quality Initiative Grant

- Integration of workforce and education data
- Longitudinal data systems
- Improved data quality and breadth of workforce data systems
- Useful information to guide policy and consumer decisions

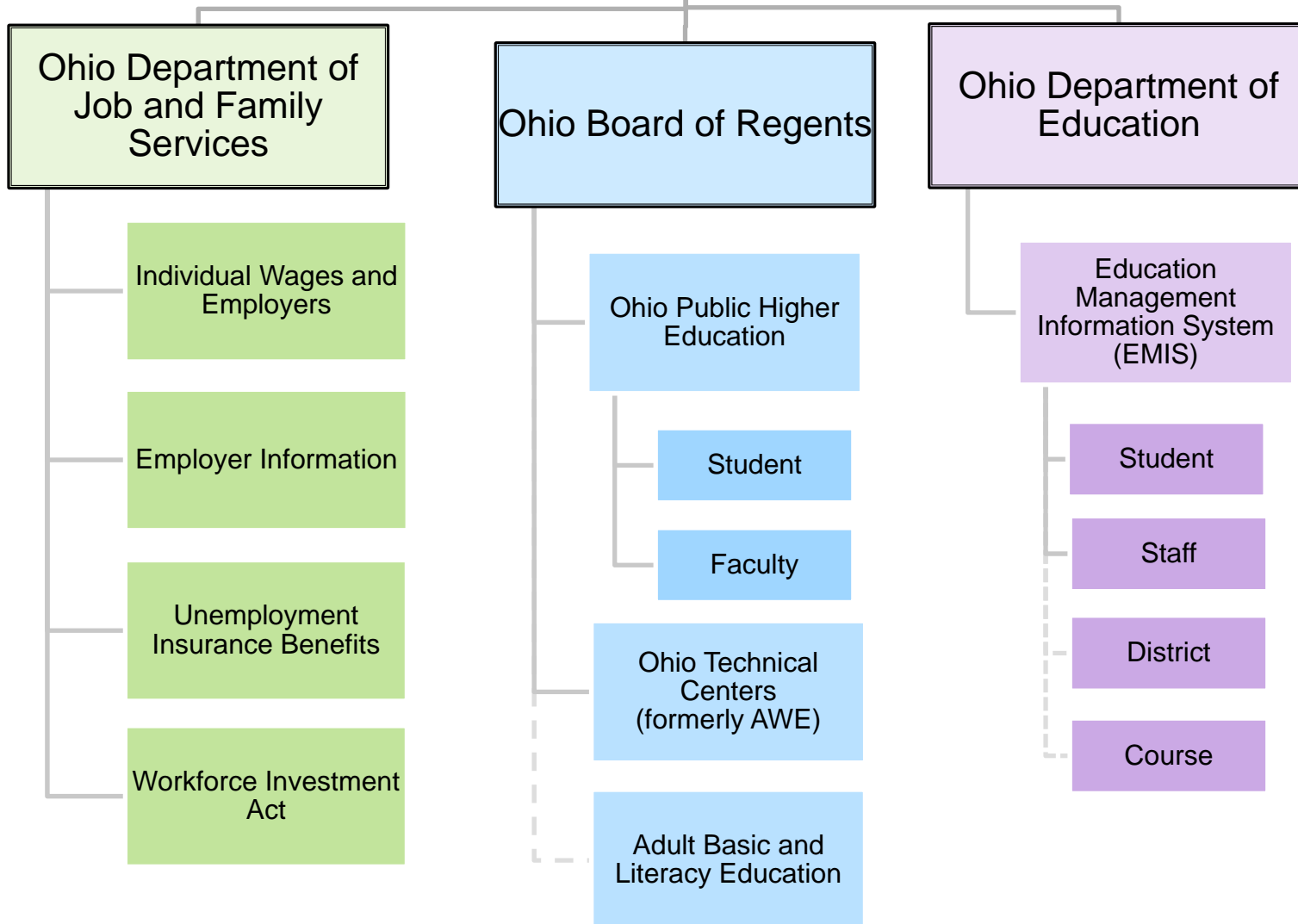


Ohio Longitudinal Data Archive





Ohio Longitudinal Data Archive





Ohio Longitudinal Data Archive

Governance

- Data Stewards Committee
 - Agency representatives
 - CHRR representatives
- Memoranda of Understanding between Ohio State University and Agencies



Application Process

- Describe Proposed Research
 - Research Questions
 - Specific Variables
 - Access to Secure Computer
- Agency Approval
- IRB Approval
- Data Access through Secure FTP
- Report Results



Application Process

- Variables identified through OLDA metadata:

<https://www.chrr.ohio-state.edu/investigator/pages/search.jsp>



Research Examples



Research Examples

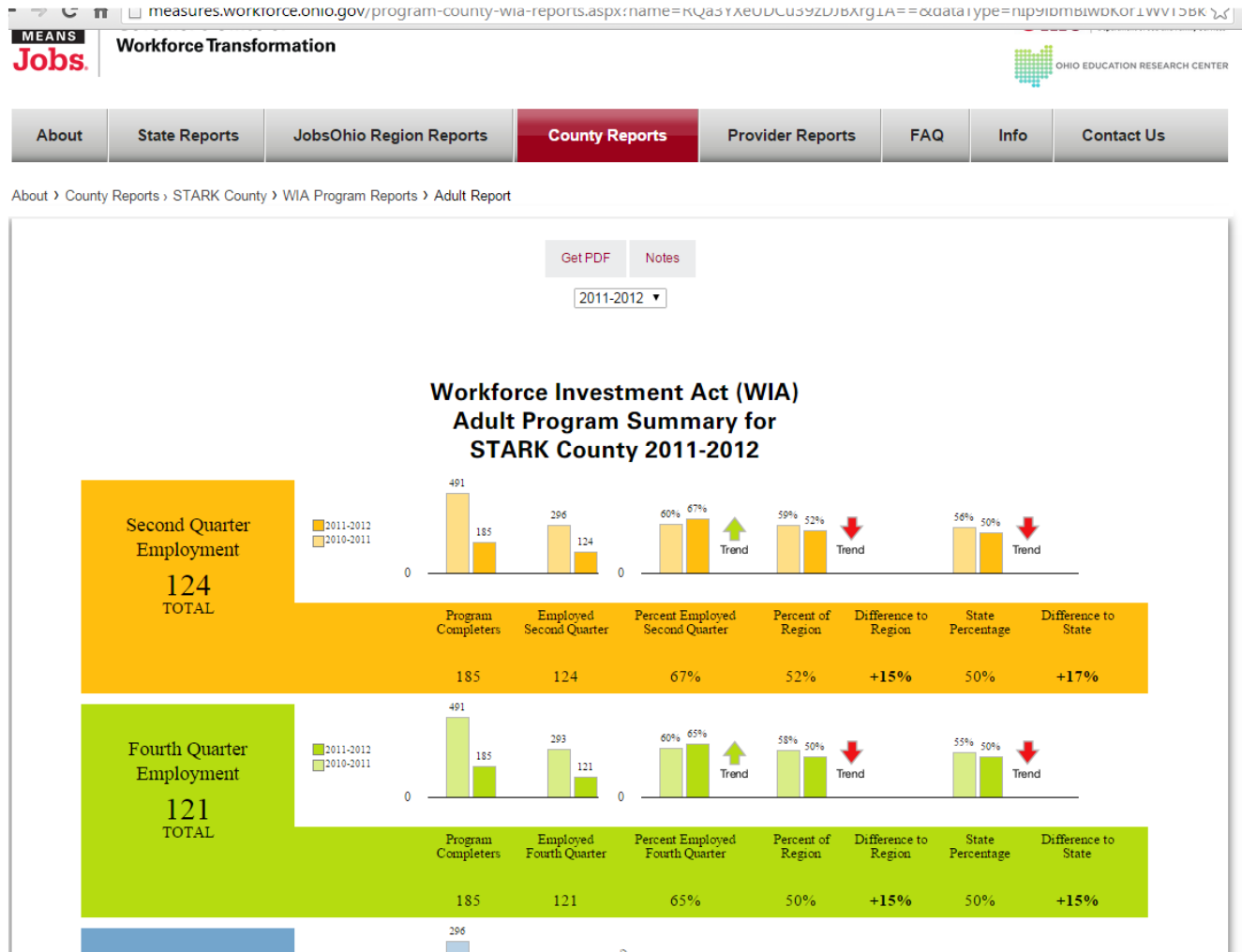
Workforce Success Measures Dashboard

- Partnership between Ohio Governor's Office of Workforce Transformation and OERC
- Consistent Outcome Measures Across Programs:
 - Workforce Investment Act
 - Adult Basic and Literacy Education
 - Perkins-funded Ohio Technical Centers
 - State-funded Higher Ed Financial Aid & Scholarships
- Measures:
 - Two- and four-quarter employment and wage outcomes
 - Training and education outcomes
 - Retention measure

<http://www.measures.workforce.ohio.gov/about.aspx>



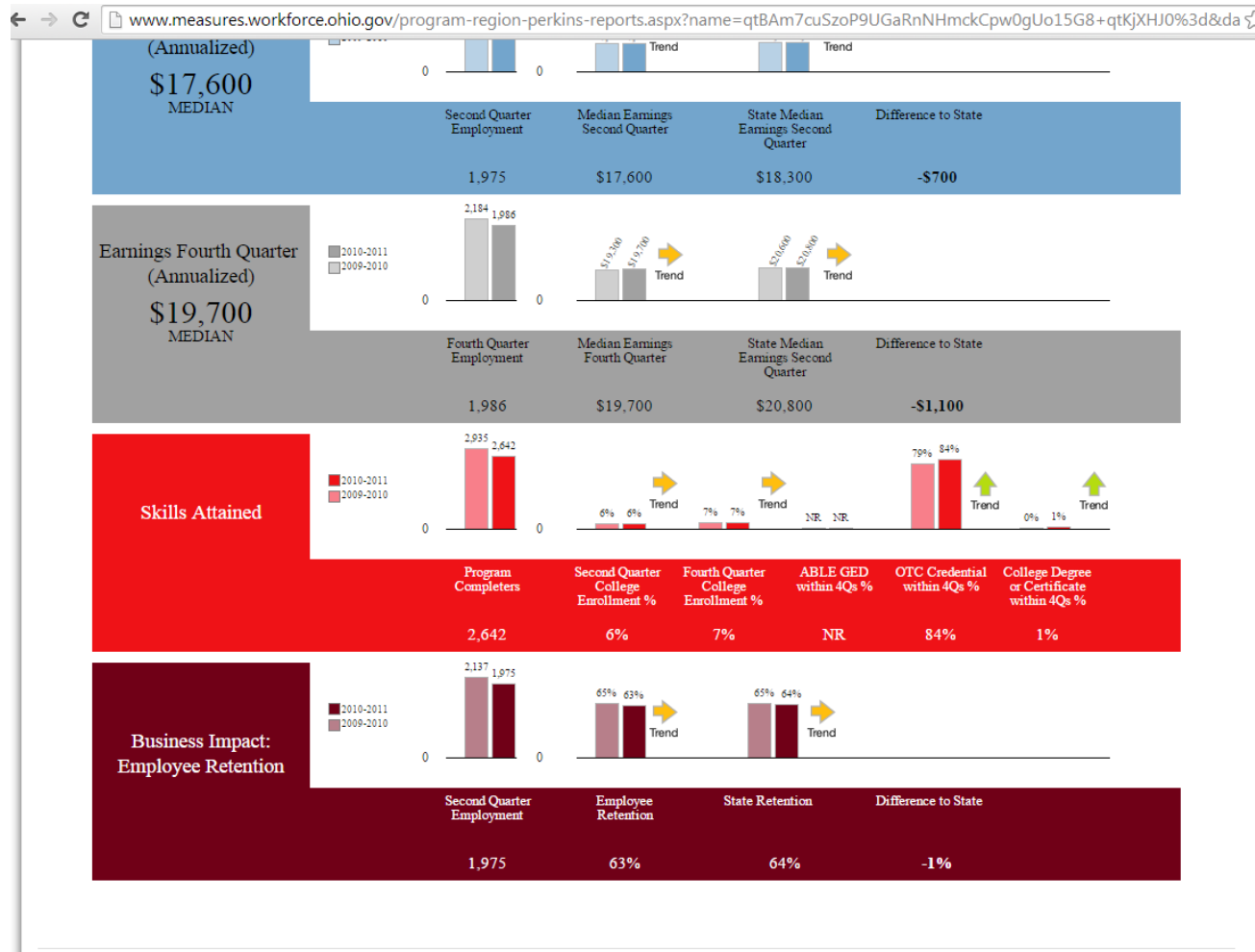
Workforce Success Measures Dashboard





Research Examples

Workforce Success Measures Dashboard – North East





Research Examples

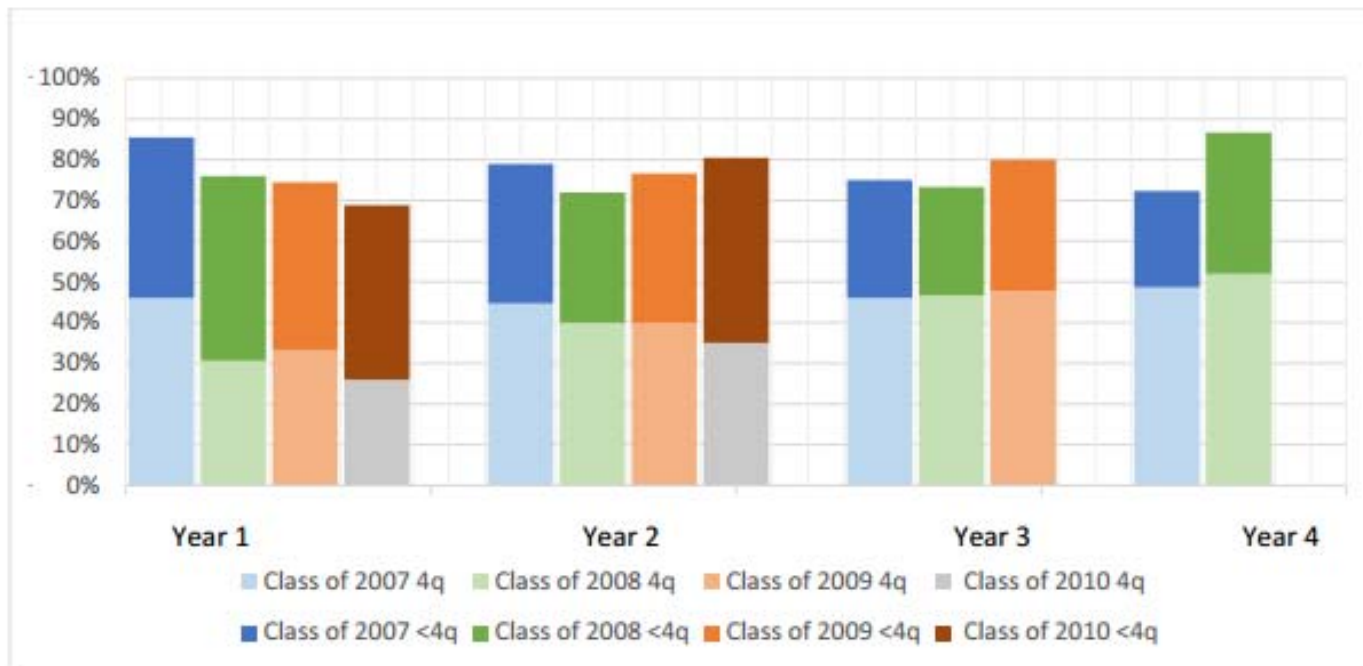
K-12 Outcomes

- Small, rural school district
- Large, urban school district
- Dashboards in development
 - Ohio Appalachian Coalition
 - Central Ohio Consortium



Results from Small, Rural District

Figure 1. Percent Employed in Ohio



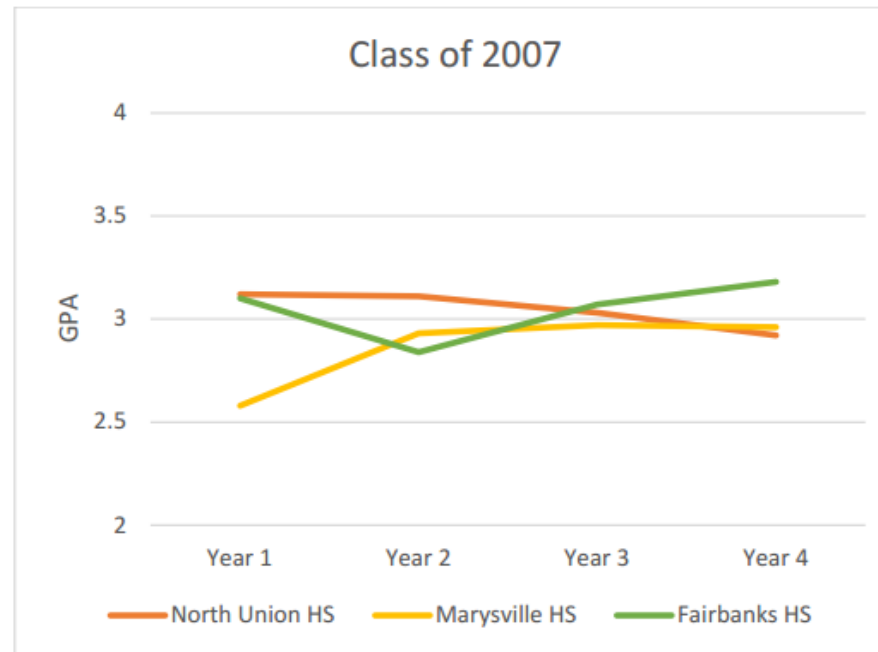


Research Examples

Results from Small, Rural District

Figure 5. GPA of Students Enrolled in an Ohio Public College or University

Comparison of North Union HS Graduates to Marysville and Fairbanks HS Graduates





Research Examples

Higher Education Outcome Tableau Tool

<http://tinyurl.com/mv7whjq>



THE OHIO STATE UNIVERSITY

Center for Human Resource Research

Questions?

Kristin Harlow
Center for Human Resource Research
harlow.19@osu.edu