

MPR Survey Manager

John Mamer
Vice President for Information
Technology

jmamer@mathematica-mpr.com

MATHEMATICA
Policy Research, Inc.

What Is the MPR Survey Manager?

- **Mission critical software**
- **Designed to support data collection and sample management tasks**
- **Used across a variety of survey and social science research projects**

History

- **Microsoft Access shop until late 1990s**
- **First attempts at “reusable” systems:**
 - **Locating/tracing**
 - **Random assignment**
- **Started from scratch with .Net in early 2003**
- **Used on 11 projects since mid 2003**

Core Objectives

- **Build a core set of reusable components to cut development time/costs on new projects**
- **Retain flexibility to address individual project requirements**
- **Take advantage of web-based technology**

Major Features

- Random assignment
- Locating
- Document processing
- Field survey management

Major Features (continued)

- **Case retrieve/add/update**
- **Role-based authentication**
- **Tight integration with Blaise from Statistics Netherlands**
- **Tight integration with SurveyTrak from ISR at University of Michigan**

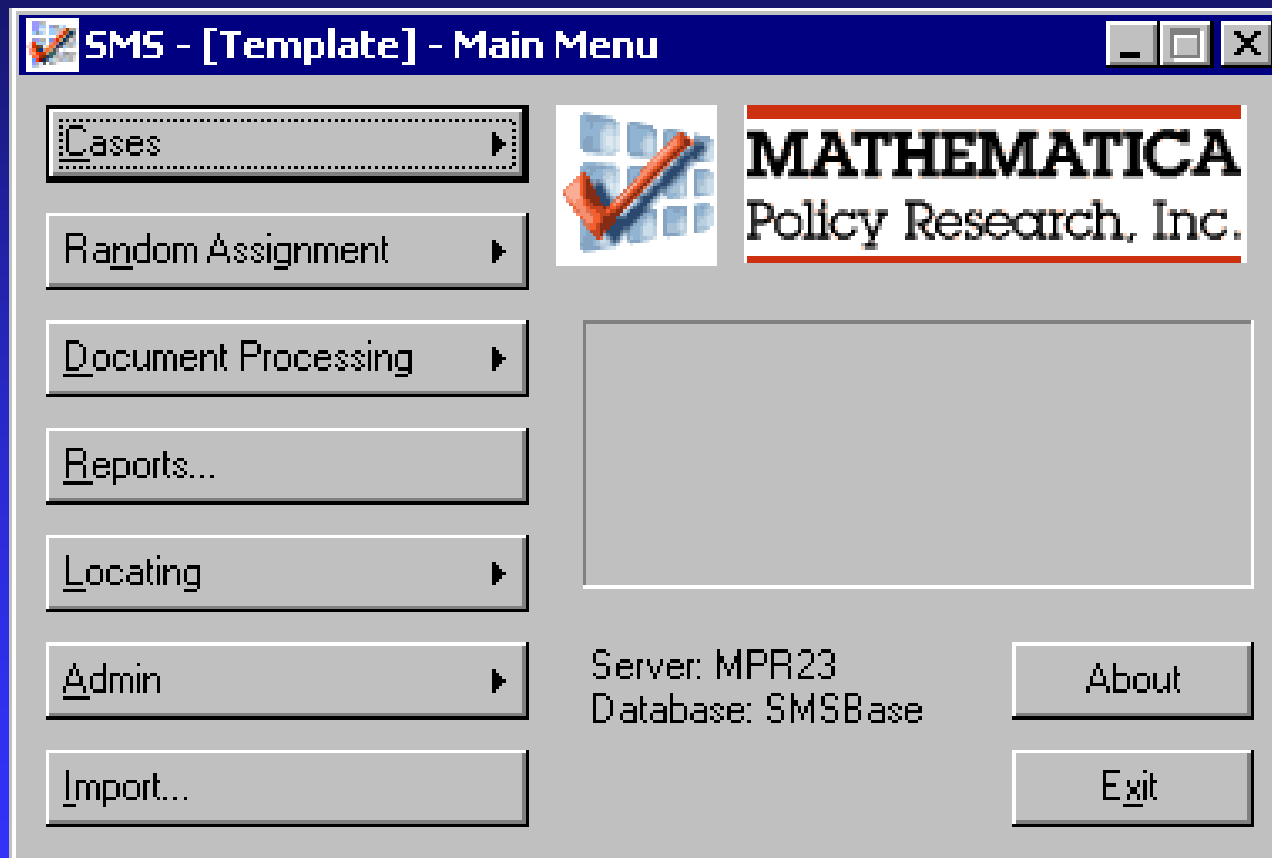
Random Assignment

- Half the projects to date have involved random assignment.
- Random assignment process populates the database for later data collection.
- Remaining projects have begun with a sample data load from our statistics group.

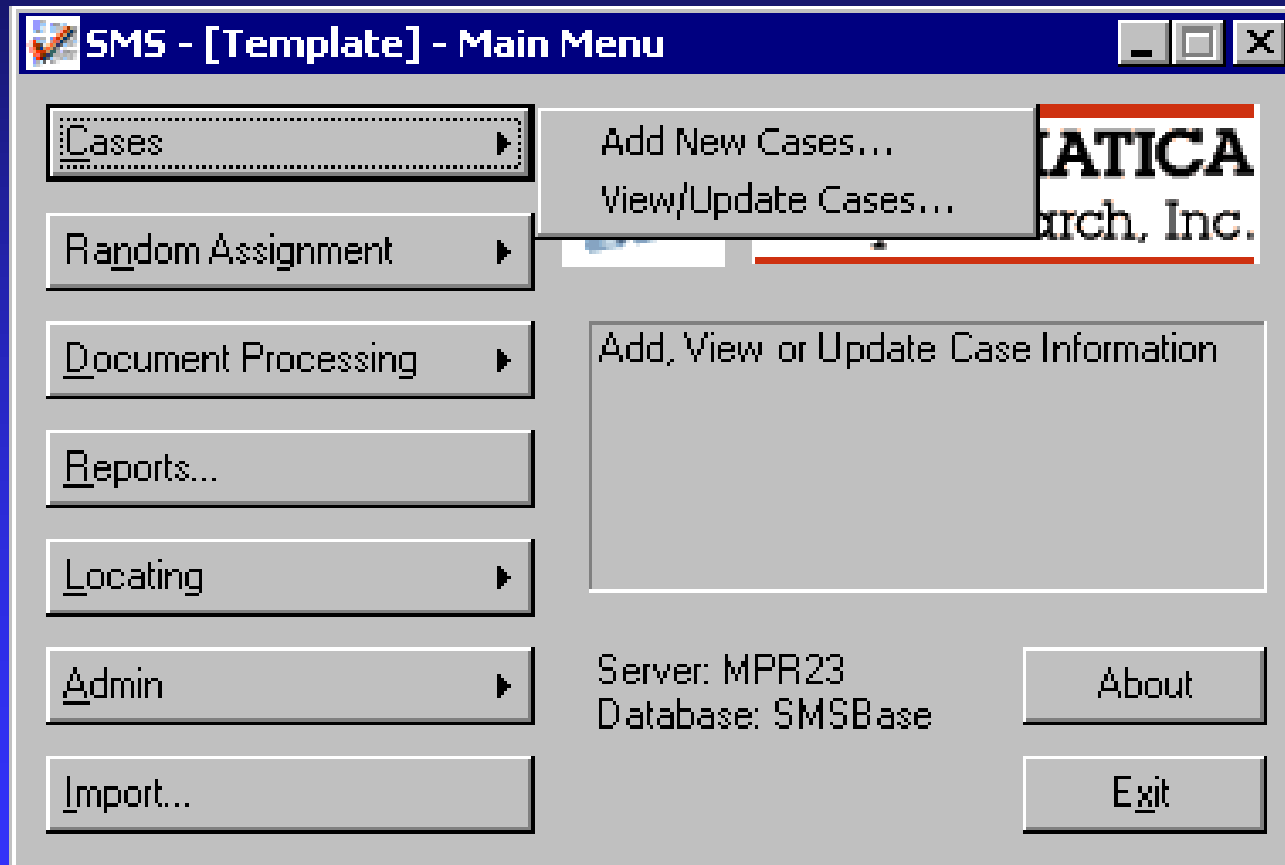
Four User Interfaces

- **Three-tier architecture allows:**
 - **Windows user interface**
 - **Browser interface**
 - **Smart client interface**
 - **Interoperability to non-Microsoft systems (Unix) via web services**

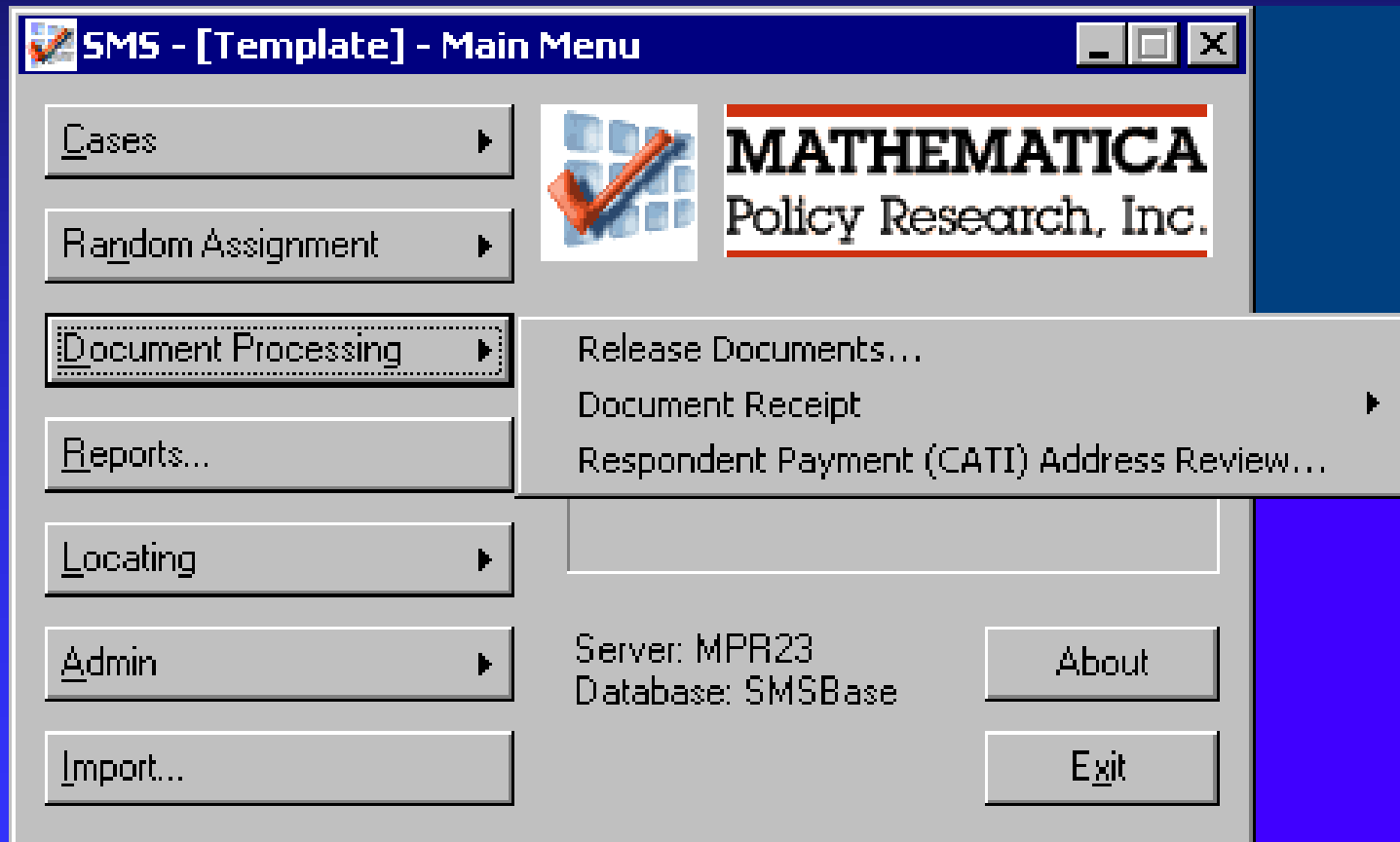
User Interface



User Interface

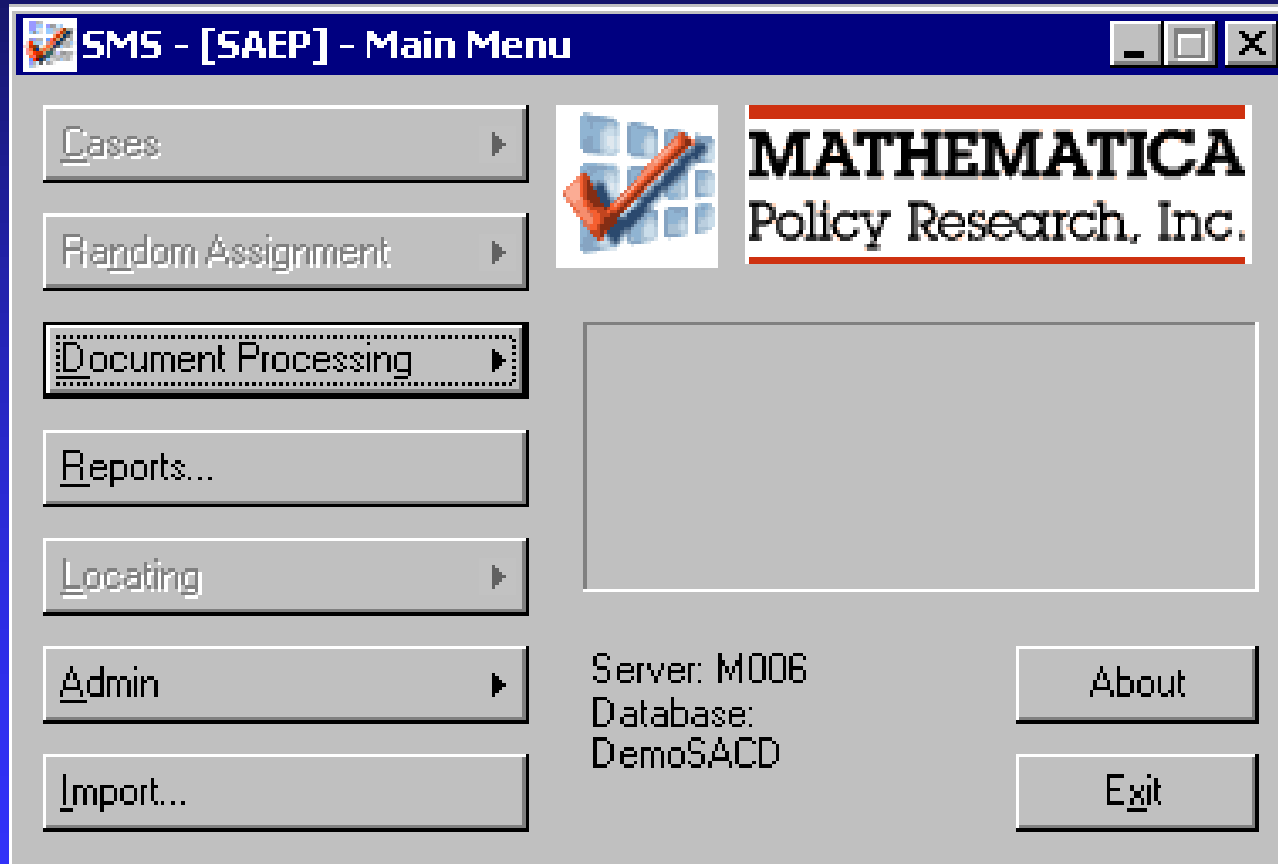


User Interface



Demo of Browser Interface

Back to the Desktop Interface



What Was Accomplished

- **We successfully built reusable components.**
- **This allowed us to address requirements that were not possible under earlier approaches**
- **Flexibility was maintained but at a cost.**