

Impact of Processing on CPS Interstate Migration Rates

In 2006, the migration imputation procedures for the Annual Social and Economic Supplement (ASEC) of the Current Population Survey (CPS) were changed. Prior to 2006, cases were imputed using a sort order which first sorted by the various collection subsamples that make up the full ASEC file (the regular March CPS; Hispanic households; the non-Hispanic, non-White households; and the Non-Hispanic White households with children 18 years or younger)¹ for each of the distinct months (February, March, and April), and then within each subsample a geographic sort was applied. Beginning in the 2006 data collection cycle, data from all subsamples were geographically sorted before the implementation of the imputation algorithm, an improved method. Research on this topic indicates that the imputation method prior to 2006 overstated interstate migration rates for imputed cases.² One effect of the revised processing change was that interstate migration rates dropped significantly in 2006, but this drop is due to the improved processing method. Users of interstate migration data should be cautious of comparing rates from the 1999-2000 to 2004-5 period with other periods.

Annual Geographical Mobility Rates, By Type of Movement: 2000-2009

(Numbers in thousands.)

Mobility period	Total, 1 year old and over	Same residence (non-movers)	Total movers	Different residence in the United States					Movers from abroad
				Total	Same county	Different county			
						Total	Same State	Different State	
2008-2009	100.0	87.5	12.5	12.1	8.4	3.7	2.1	1.6	0.4
2007-2008	100.0	88.1	11.9	11.5	7.8	3.7	2.1	1.6	0.4
2006-2007	100.0	86.8	13.2	12.8	8.6	4.2	2.5	1.7	0.4
2005-2006	100.0	86.3	13.7	13.3	8.6	4.7	2.8	2.0	0.4
2004-2005	100.0	86.1	13.9	13.2	7.9	5.3	2.7	2.6	0.6
2003-2004	100.0	86.3	13.7	13.3	7.9	5.3	2.8	2.6	0.4
2002-2003	100.0	85.8	14.2	13.7	8.3	5.4	2.7	2.7	0.4
2001-2002	100.0	85.2	14.8	14.2	8.5	5.7	2.9	2.8	0.6
2000-2001	100.0	85.5	14.5	13.8	8.3	5.6	2.8	2.8	0.6
1999-2000	100.0	83.9	16.1	15.4	9.0	6.4	3.3	3.1	0.6

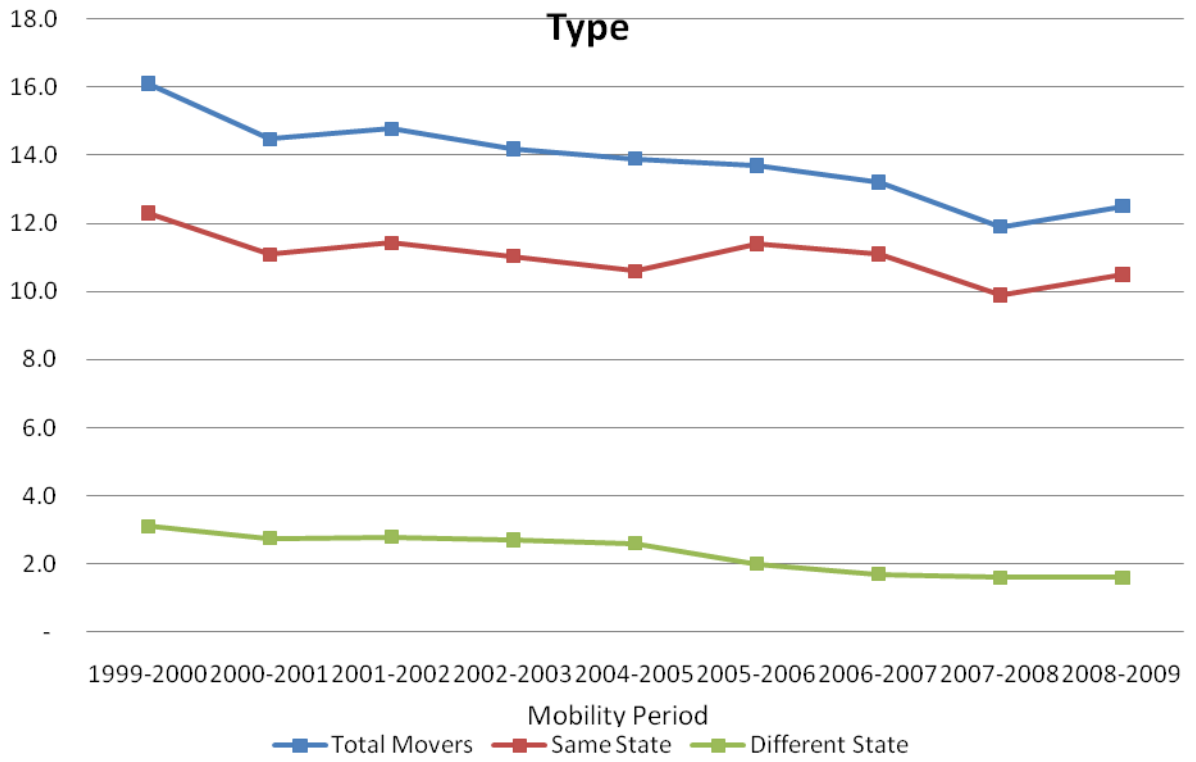
The 1999-2000 data use 1990-based adjusted controls; 2000-2001 through 2008-2009 use 2000 controls

Source: U.S. Census Bureau, Current Population Survey.

¹ More information on the ASEC subsamples can be found in U.S. Census Bureau *Current Population Survey Design and Methodology Technical Paper 66*. (<http://www.census.gov/prod/2006pubs/tp-66.pdf>.)

² For additional information, see Kaplan, G. & Sam Schulhofer-Wohl. (2010). "Interstate Migration Has Fallen less Than You Think: Consequences of Hot Deck Imputation in the Current Population Survey". Working Paper 681 located at http://www.minneapolisfed.org/publications_papers/pub_display.cfm?id=4568.

Percentage Different Residence 1 Year Ago by Mover Type



Source: U.S. Census Bureau, Current Population Survey