

# 2020 CENSUS ELL STUDENT ACTIVITY

Name \_\_\_\_\_

## Make Data Speak

Data available from the U.S. Census Bureau is listed below. You can also reference **Activity Item 1: Data Available From the Census Bureau.**

- |   |  |
|---|--|
| % in poverty                              | % of people with a bachelor's degree or higher       |
| # of female-owned business                | % of people who speak a language other than English  |
| # of minority-owned businesses            | # of people per household                            |
| % of households with a computer           | owner-occupied housing unit rates                    |
| % of people who are high school graduates | % of people who lived where they live now a year ago |

1. Record the statistic that your group wants to research: \_\_\_\_\_

Write in the name of the cities your group has chosen for City 1 and City 2. Then complete the chart below with data points for all five locations using [QuickFacts](https://www.census.gov/quickfacts/) (https://www.census.gov/quickfacts/).

Location	Data Point
U.S. National:	
My State:	
My ZIP Code:	
City 1:	
City 2:	



2. Work with your group to make an infographic based on the data collected. You must use data from all five locations.
  
3. Now join your group in presenting the infographic to the class. Consider the following factors and include them in your presentation:
  - Why is this statistic important?
  - How can businesses use this information when making decisions?
  - How could you improve your statistic at the city, state, and national level?

**Note:** "Improving" a statistic would mean *increasing* a positive statistic (for example, high school graduation rates) or *decreasing* a negative one (such as people who do not have health insurance.)

  - Which regions or states would need the most assistance in improving your statistic?

## Home Extension

Take your student worksheet home and share it with an adult in your home. Share with them the data you collected and how you think your statistic could improve within your city, state, or country. Remind them that the 2020 Census is coming soon and ask who will be completing the form for your household.

## Word Bank and Vocabulary

### Word Bank

You can use the following words to help you discuss answers with your classmates and to write answers on your worksheet.

infographic	population	government	poverty
ancestry	census	business	owner-occupied
proficiency	data	education	statistics





## Key Vocabulary

	<b>Infographic:</b> A way to display data visually
	<b>Ancestry:</b> Where a person’s family came from
	<b>Population:</b> The number of people living in a certain area
	<b>Living arrangements:</b> Where and how people live, like in an apartment or house, with family members or alone
	<b>Poverty:</b> Severe deprivation of basic human needs, including food, safe drinking water, sanitation facilities, health, shelter, education, and information
	<b>Statistics:</b> Collection and analysis of numerical data in large quantities
	<b>Proficiency:</b> A high degree of skill



## Activity Item 1: Data Available From the Census Bureau

Fact	United States
<b>PEOPLE</b>	
<b>Population</b>	
Population estimates, July 1, 2018, (V2018)	327,167,434
Population estimates base, April 1, 2010, (V2018)	308,758,105
Population, percent change - April 1, 2010 (estimates base) to July 1, 2018, (V2018)	6.0%
Population, Census, April 1, 2010	308,745,538
<b>Age and Sex</b>	
Persons under 5 years, percent	6.1%
Persons under 18 years, percent	22.4%
Persons 65 years and over, percent	16.0%
Female persons, percent	50.8%
<b>Race and Hispanic Origin</b>	
White alone, percent	76.5%
Black or African American alone, percent	13.4%
American Indian and Alaska Native alone, percent	1.3%
Asian alone, percent	5.9%
Native Hawaiian and Other Pacific Islander alone, percent	0.2%
Two or More Races, percent	2.7%
Hispanic or Latino, percent	18.3%
White alone, not Hispanic or Latino, percent	60.4%
<b>Population Characteristics</b>	
Veterans, 2013-2017	18,939,219
Foreign born persons, percent, 2013-2017	13.4%
<b>Housing</b>	
Housing units, July 1, 2018, (V2018)	138,537,078
Owner-occupied housing unit rate, 2013-2017	63.8%
Median value of owner-occupied housing units, 2013-2017	\$193,500
Median selected monthly owner costs -with a mortgage, 2013-2017	\$1,515
Median selected monthly owner costs -without a mortgage, 2013-2017	\$474
Median gross rent, 2013-2017	\$982
Building permits, 2018	1,328,827



## Activity Item 1: Data Available From the Census Bureau (Cont.)

<b>Families &amp; Living Arrangements</b>	
Households, 2013-2017	118,825,921
Persons per household, 2013-2017	2.63
Living in same house 1 year ago, percent of persons age 1 year+, 2013-2017	85.4%
Language other than English spoken at home, percent of persons age 5 years+, 2013-2017	21.3%
<b>Computer and Internet Use</b>	
Households with a computer, percent, 2013-2017	87.2%
Households with a broadband Internet subscription, percent, 2013-2017	78.1%
<b>Education</b>	
High school graduate or higher, percent of persons age 25 years+, 2013-2017	87.3%
Bachelor's degree or higher, percent of persons age 25 years+, 2013-2017	30.9%
<b>Health</b>	
With a disability, under age 65 years, percent, 2013-2017	8.7%
Persons without health insurance, under age 65 years, percent	10.2%
<b>Economy</b>	
In civilian labor force, total, percent of population age 16 years+, 2013-2017	63.0%
In civilian labor force, female, percent of population age 16 years+, 2013-2017	58.2%
Total accommodation and food services sales, 2012 (\$1,000)	708,138,598
Total health care and social assistance receipts/revenue, 2012 (\$1,000)	2,040,441,203
Total manufacturers shipments, 2012 (\$1,000)	5,696,729,632
Total merchant wholesaler sales, 2012 (\$1,000)	5,208,023,478
Total retail sales, 2012 (\$1,000)	4,219,821,871
Total retail sales per capita, 2012	\$13,443
<b>Transportation</b>	
Mean travel time to work (minutes), workers age 16 years+, 2013-2017	26.4
<b>Income &amp; Poverty</b>	
Median household income (in 2017 dollars), 2013-2017	\$57,652
Per capita income in past 12 months (in 2017 dollars), 2013-2017	\$31,177
Persons in poverty, percent	12.3%



## Activity Item 1: Data Available from the Census Bureau (Cont.)

<b>BUSINESSES</b>	
Total employer establishments, 2016	7,757,807
Total employment, 2016	126,752,238
Total annual payroll, 2016 (\$1,000)	6,435,142,055
Total employment, percent change, 2015-2016	2.1%
Total nonemployer establishments, 2017	25,701,671
All firms, 2012	27,626,360
Men-owned firms, 2012	14,844,597
Women-owned firms, 2012	9,878,397
Minority-owned firms, 2012	7,952,386
Nonminority-owned firms, 2012	18,987,918
Veteran-owned firms, 2012	2,521,682
Nonveteran-owned firms, 2012	24,070,685
<b>GEOGRAPHY</b>	
Population per square mile, 2010	87.4
Land area in square miles, 2010	3,531,905.43

Source: *U.S. Census Bureau, QuickFacts*

<https://www.census.gov/quickfacts/fact/table/US/PST045218>



## Activity Item 2: Sample U.S. Census Bureau Infographics



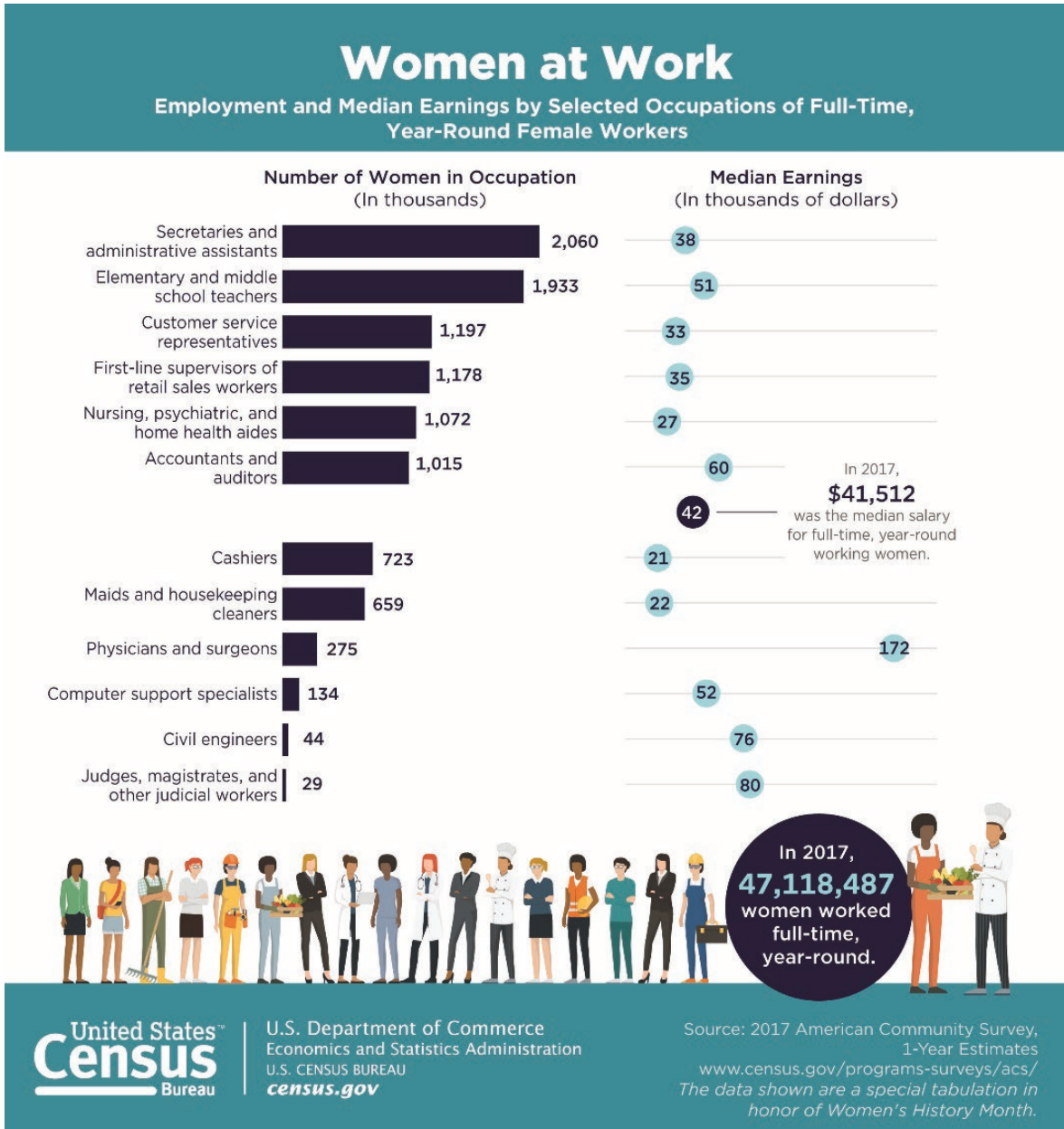
Source: U.S. Census Bureau, 2017 Population Estimates

<https://www.census.gov/content/dam/Census/library/visualizations/2019/comm/opening-day-2019.jpg>





## Activity Item 2: Sample U.S. Census Bureau Infographics (Cont.)



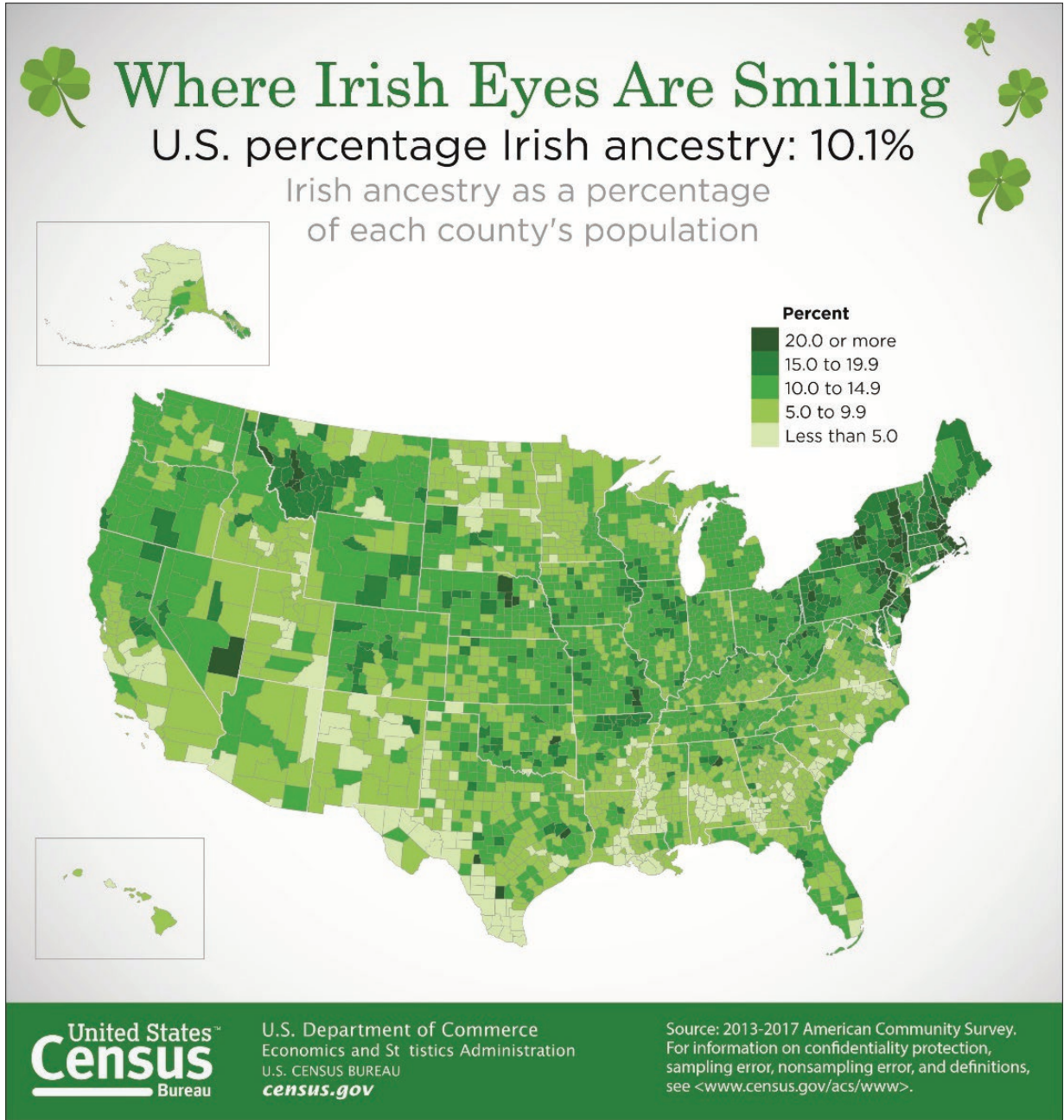
Source: U.S. Census Bureau, 2017 American Community Survey, 1-Year Estimates

<https://www.census.gov/content/dam/Census/library/visualizations/2019/comm/womens-earnings-by-occupation.jpg>





### Activity Item 2: Sample U.S. Census Bureau Infographics (Cont.)



Source: U.S. Census Bureau, 2013-2017 American Community Survey

<https://www.census.gov/content/dam/Census/library/visualizations/2019/comm/irish-american.pdf>



[census.gov/schools](https://census.gov/schools)

