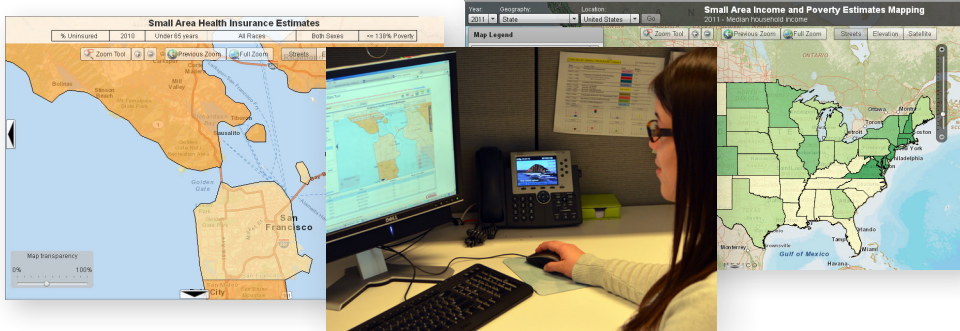


Access Data Through a Visual and Hands-on Experience

Small Area Interactive Data and Mapping Tool



Want easy access to Census Bureau data? Do you want to download data quickly and customize results? How would you like to construct maps and create time series charts?

The U.S. Census Bureau has developed a data and mapping tool that gives users, like you, interactive access to state, county, and in some cases, school district level data. The interactive tool features:

- Downloadable custom tables as PDF or CSV files
- Interactive maps available in street, elevation, or satellite view
- Printable tables, maps, and charts
- Charts showing state and national trends

Small Area Health Insurance Estimates and Small Area Income and Poverty Estimates both feature interactive tools.

Small Area Health Insurance Estimates (SAHIE)

- Only source of single-year health insurance estimates for every county
- Precise, model-based estimates—consistent with the American Community Survey (ACS)

Website: www.census.gov/did/www/sahie/

Data Tool: www.census.gov/did/www/sahie/data/interactive/

Small Area Income and Poverty Estimates (SAIPE)

- Only source of single-year median household income and poverty data for every county
- Used for allocating Title I funding to school districts across the U.S.

Website: www.census.gov/did/www/saipe/index.html

Data Tool: www.census.gov/did/www/saipe/data/interactive/

Health Datapalooza

June 3-4, 2013

Small Area Health Insurance Estimates (SAHIE)

Health Insurance Rates

- State
- County

Data Features

- Income to Poverty Ratio (IPR) groups related to new Federal Health Care eligibility rules
- Five age groups
- Race and ethnicity at the State Level

Small Area Income and Poverty Estimates (SAIPE)

Median Household Income

- State
- County

Poverty Rates

- State
- County
- School District

Data Features

- School District age 5-17 poverty rates
- Over 15 years of data

