

OnTheMap Employment Summary

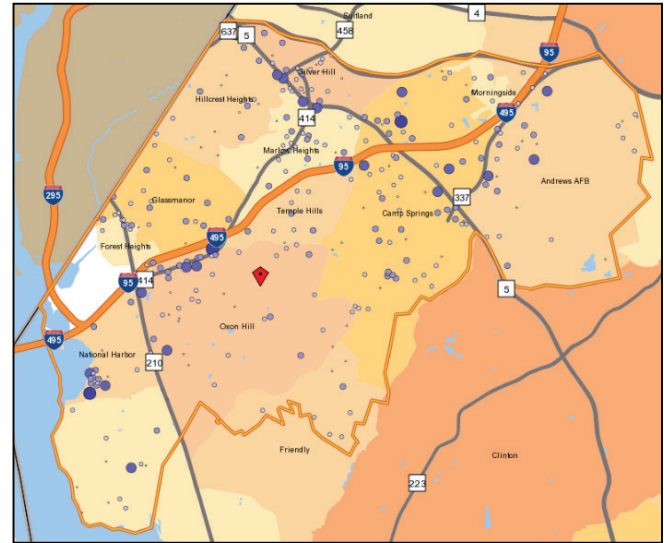
For WSSC Water Restriction Area, July 17, 2013

Water Restricted Area

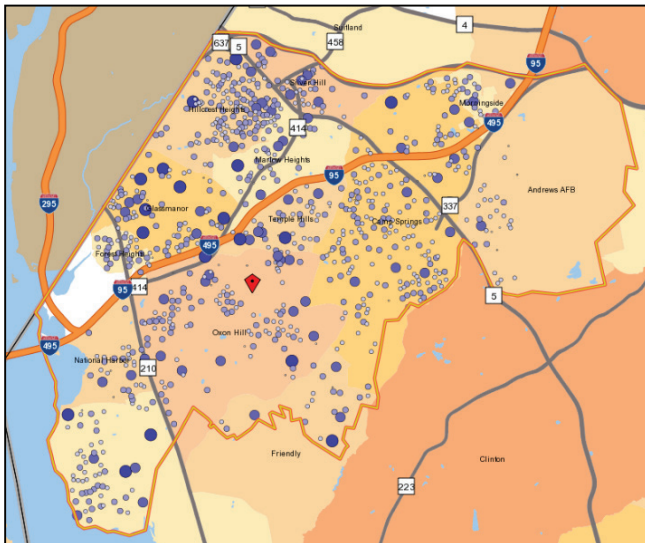


Source: <http://gisweb.wsscwater.com/waterrestrictions/>
 Accessed: July 17, 2013

Workers Employed in Water Restriction Area



Workers Living in Water Restriction Area



Job Totals in Water Restriction Area

Workers Employed: 20,304
 Workers Living: 45,007

Workers Living, by Place

Camp Springs CDP, MD (Partial)	7,656
Hillcrest Heights CDP, MD (Partial)	6,816
Oxon Hill CDP, MD (Partial)	6,705
Glassmanor CDP, MD (Partial)	6,082
Fort Washington CDP, MD (Partial)	3,794
Temple Hills CDP, MD	3,050
Marlow Heights CDP, MD	2,722
Silver Hill CDP, MD	2,352
Friendly CDP, MD (Partial)	1,581
National Harbor CDP, MD	1,436
Forest Heights town, MD	1,076
Morningside town, MD	1,004
Andrews AFB CDP, MD (Partial)	546
Forestville CDP, MD (Partial)	187

Workers Employed, by Place

Camp Springs CDP, MD (Partial)	4,737
Oxon Hill CDP, MD (Partial)	3,795
National Harbor CDP, MD	3,134
Marlow Heights CDP, MD	2,185
Andrews AFB CDP, MD (Partial)	1,441
Hillcrest Heights CDP, MD (Partial)	1,180
Glassmanor CDP, MD (Partial)	1,112
Fort Washington CDP, MD (Partial)	795
Silver Hill CDP, MD	627
Morningside town, MD	374
Forest Heights town, MD	327
Friendly CDP, MD (Partial)	305
Temple Hills CDP, MD	278
Forestville CDP, MD (Partial)	9
Westphalia CDP, MD (Partial)	5

Sources/Notes: 1. Water Restriction Area boundary sourced from <http://gisweb.wsscwater.com/waterrestrictions/> on July 17, 2013. All other data sourced from <http://onthemap.ces.census.gov/> 2. Jobs shown are Primary Jobs for 2011. 3. Military personnel and employment at some government agencies do not appear in the LODES/OnTheMap database.

Water Restriction Area Detailed Area Profile Reports

Water Restricted Area - Work Area Profile		
Total Primary Jobs		
	2011	
	Count	Share
Total Primary Jobs	20,304	100.0%
Jobs by Worker Age		
	2011	
	Count	Share
Age 29 or younger	5,290	26.1%
Age 30 to 54	10,898	53.7%
Age 55 or older	4,116	20.3%
Jobs by Earnings		
	2011	
	Count	Share
\$1,250 per month or less	4,403	21.7%
\$1,251 to \$3,333 per month	7,813	38.5%
More than \$3,333 per month	8,088	39.8%
Jobs by NAICS Industry Sector		
	2011	
	Count	Share
Agriculture, Forestry, Fishing and Hunting	0	0.0%
Mining, Quarrying, and Oil and Gas Extraction	6	0.0%
Utilities	1	0.0%
Construction	891	4.4%
Manufacturing	173	0.9%
Wholesale Trade	367	1.8%
Retail Trade	4,198	20.7%
Transportation and Warehousing	491	2.4%
Information	116	0.6%
Finance and Insurance	989	4.9%
Real Estate and Rental and Leasing	553	2.7%
Professional, Scientific, and Technical Services	1,568	7.7%
Management of Companies and Enterprises	39	0.2%
Administration & Support, Waste Management and Remediation Services	1,789	8.8%
Health Care and Social Assistance	2,731	13.5%
Arts, Entertainment, and Recreation	1,318	6.5%
Accommodation and Food Services	32	0.2%
Other Services (excluding Public Administration)	3,969	19.5%
Public Administration	913	4.5%
	101	0.5%
Jobs by Worker Race		
	2011	
	Count	Share
White Alone	10,541	51.9%
Black or African American Alone	7,780	38.3%
American Indian or Alaska Native Alone	101	0.5%
Asian Alone	1,521	7.5%
Native Hawaiian or Other Pacific Islander Alone	36	0.2%
Two or More Race Groups	325	1.6%
Jobs by Worker Ethnicity		
	2011	
	Count	Share
Not Hispanic or Latino	18,287	90.1%
Hispanic or Latino	2,017	9.9%
Jobs by Worker Educational Attainment		
	2011	
	Count	Share
Less than high school	2,406	11.8%
High school or equivalent, no college	3,939	19.4%
Some college or Associate degree	4,482	22.1%
Bachelor's degree or advanced degree	4,187	20.6%
Educational attainment not available (workers aged 29 or younger)	5,290	26.1%
Jobs by Worker Sex		
	2011	
	Count	Share
Male	10,454	51.5%
Female	9,850	48.5%

Water Restricted Area - Home Area Profile		
Total Primary Jobs		
	2011	
	Count	Share
Total Primary Jobs	45,007	100.0%
Jobs by Worker Age		
	2011	
	Count	Share
Age 29 or younger	11,149	24.8%
Age 30 to 54	24,195	53.8%
Age 55 or older	9,663	21.5%
Jobs by Earnings		
	2011	
	Count	Share
\$1,250 per month or less	6,892	15.3%
\$1,251 to \$3,333 per month	15,265	33.9%
More than \$3,333 per month	22,850	50.8%
Jobs by NAICS Industry Sector		
	2011	
	Count	Share
Agriculture, Forestry, Fishing and Hunting	21	0.0%
Mining, Quarrying, and Oil and Gas Extraction	14	0.0%
Utilities	251	0.6%
Construction	1,532	3.4%
Manufacturing	757	1.7%
Wholesale Trade	893	2.0%
Retail Trade	4,231	9.4%
Transportation and Warehousing	1,876	4.2%
Information	1,109	2.5%
Finance and Insurance	1,234	2.7%
Real Estate and Rental and Leasing	844	1.9%
Professional, Scientific, and Technical Services	5,311	11.8%
Management of Companies and Enterprises	398	0.9%
Administration & Support, Waste Management and Remediation Services	3,530	7.8%
Health Care and Social Assistance	3,990	8.9%
Arts, Entertainment, and Recreation	5,395	12.0%
Accommodation and Food Services	573	1.3%
Other Services (excluding Public Administration)	3,826	8.5%
Public Administration	2,462	5.5%
	6,760	15.0%
Jobs by Worker Race		
	2011	
	Count	Share
White Alone	18,177	40.4%
Black or African American Alone	23,553	52.3%
American Indian or Alaska Native Alone	263	0.6%
Asian Alone	2,230	5.0%
Native Hawaiian or Other Pacific Islander Alone	84	0.2%
Two or More Race Groups	700	1.6%
Jobs by Worker Ethnicity		
	2011	
	Count	Share
Not Hispanic or Latino	41,461	92.1%
Hispanic or Latino	3,546	7.9%
Jobs by Worker Educational Attainment		
	2011	
	Count	Share
Less than high school	4,875	10.8%
High school or equivalent, no college	8,874	19.7%
Some college or Associate degree	9,891	22.0%
Bachelor's degree or advanced degree	10,218	22.7%
Educational attainment not available (workers aged 29 or younger)	11,149	24.8%
Jobs by Worker Sex		
	2011	
	Count	Share
Male	20,707	46.0%
Female	24,300	54.0%

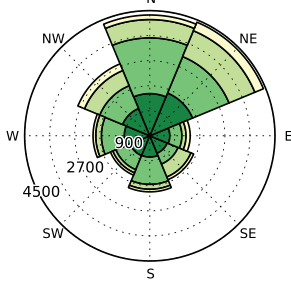
Sources/Notes: 1. Water Restriction Area boundary sourced from <http://gisweb.wsscwater.com/waterrestrictions/> on July 17, 2013. All other data sourced from <http://onthemap.ces.census.gov/> 2. Jobs shown are Primary Jobs for 2011. 3. Military personnel and employment at some government agencies do no appear in the LODES/OnTheMap database.

OnTheMap Employment Summary

For WSSC Water Restriction Area, July 17, 2013

Residential Pattern of Workers Employed in Water Restriction Area

Job Counts by Distance/Direction in 2011
All Workers

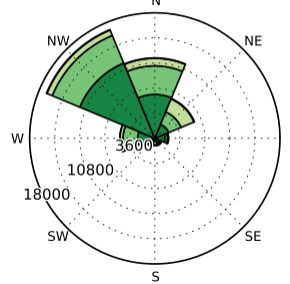


Jobs by Distance - Work Census Block to Home Census Block

2011		
	Count	Share
Total Primary Jobs	20,304	100.0%
Less than 10 miles	8,100	39.9%
10 to 24 miles	7,516	37.0%
25 to 50 miles	3,405	16.8%
Greater than 50 miles	1,283	6.3%

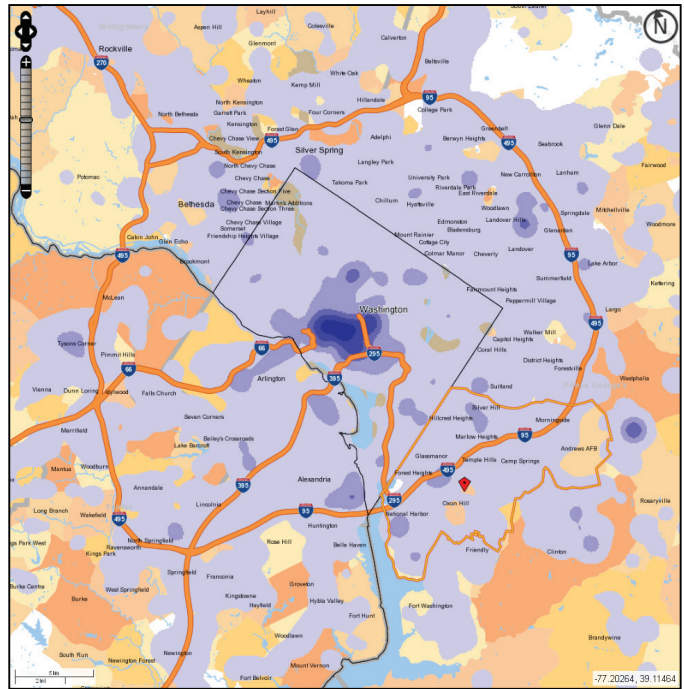
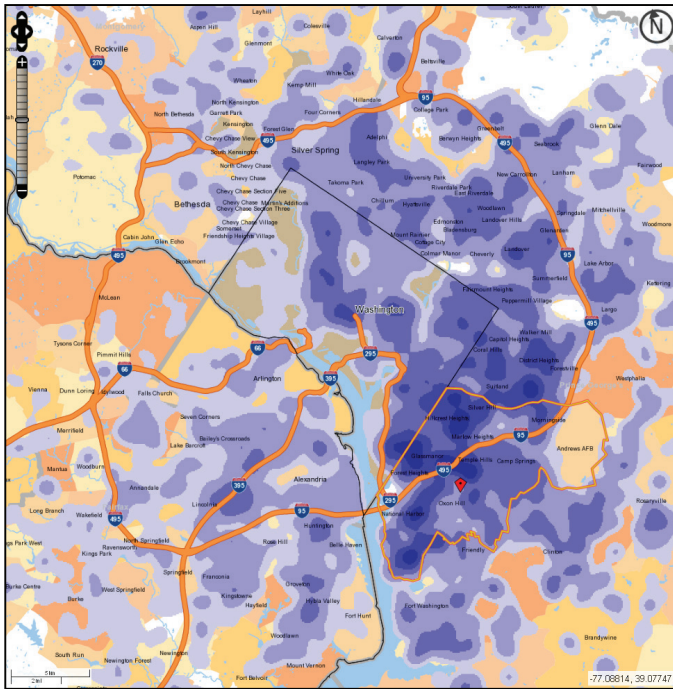
Employment Pattern of Workers Living in Water Restriction Area

Job Counts by Distance/Direction in 2011
All Workers



Jobs by Distance - Home Census Block to Work Census Block

2011		
	Count	Share
Total Primary Jobs	45,007	100.0%
Less than 10 miles	26,147	58.1%
10 to 24 miles	13,838	30.7%
25 to 50 miles	4,709	10.5%
Greater than 50 miles	313	0.7%



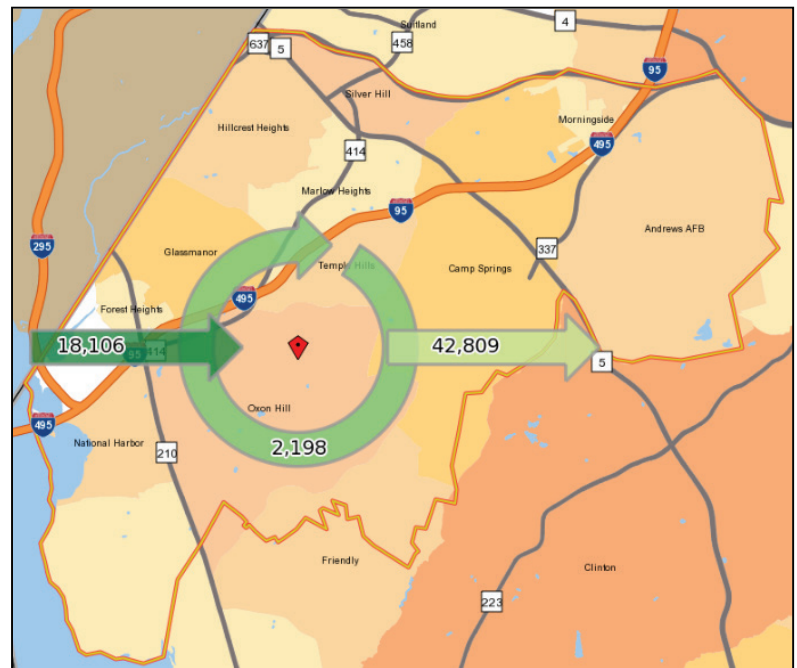
Sources/Notes: 1. Water Restriction Area boundary sourced from <http://gisweb.wsscwater.com/waterrestrictions/> on July 17, 2013. All other data sourced from <http://onthemap.ces.census.gov/> 2. Jobs shown are Primary Jobs for 2011. 3. Military personnel and employment at some government agencies do no appear in the LODES/OnTheMap database.

OnTheMap Employment Summary

For WSSC Water Restriction Area, July 17, 2013

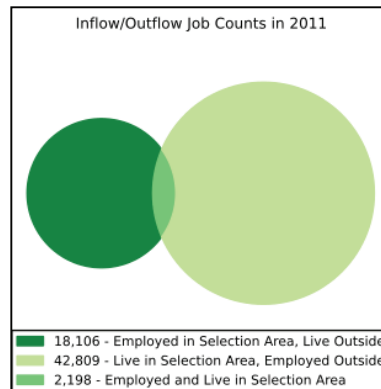
Water Restricted Area

<u>All Counties</u>	45,007	100.0%
<u>District of Columbia, DC</u>	17,158	38.1%
<u>Prince George's County, MD</u>	11,227	24.9%
<u>Fairfax County, VA</u>	3,985	8.9%
<u>Montgomery County, MD</u>	3,302	7.3%
<u>Arlington County, VA</u>	1,881	4.2%
<u>Alexandria city, VA</u>	1,737	3.9%
<u>Anne Arundel County, MD</u>	1,020	2.3%
<u>Baltimore County, MD</u>	972	2.2%
<u>Baltimore city, MD</u>	869	1.9%
<u>Charles County, MD</u>	639	1.4%
All Other Locations	2,217	4.9%



Workers Living in Water Restriction Area

<u>All Counties</u>	20,304	100.0%
<u>Prince George's County, MD</u>	8,111	39.9%
<u>District of Columbia, DC</u>	1,752	8.6%
<u>Fairfax County, VA</u>	1,638	8.1%
<u>Montgomery County, MD</u>	1,483	7.3%
<u>Charles County, MD</u>	1,387	6.8%
<u>Anne Arundel County, MD</u>	934	4.6%
<u>Baltimore County, MD</u>	535	2.6%
<u>Calvert County, MD</u>	489	2.4%
<u>St. Mary's County, MD</u>	460	2.3%
<u>Alexandria city, VA</u>	367	1.8%
All Other Locations	3,148	15.5%



Inflow/Outflow Job Counts (Primary Jobs)

	Count	Share
<u>Employed in the Selection Area</u>	20,304	100.0%
<u>Employed in the Selection Area but Living Outside</u>	18,106	89.2%
<u>Employed and Living in the Selection Area</u>	2,198	10.8%
<u>Living in the Selection Area</u>	45,007	100.0%
<u>Living in the Selection Area but Employed Outside</u>	42,809	95.1%
<u>Living and Employed in the Selection Area</u>	2,198	4.9%

Sources/Notes: 1. Water Restriction Area boundary sourced from <http://gisweb.wsscwater.com/waterrestrictions/> on July 17, 2013. All other data sourced from <http://onthemap.ces.census.gov/> 2. Jobs shown are Primary Jobs for 2011. 3. Military personnel and employment at some government agencies do not appear in the LODES/OnTheMap database.