

Local Employment Dynamics with Job-to-Job Flows Explorer

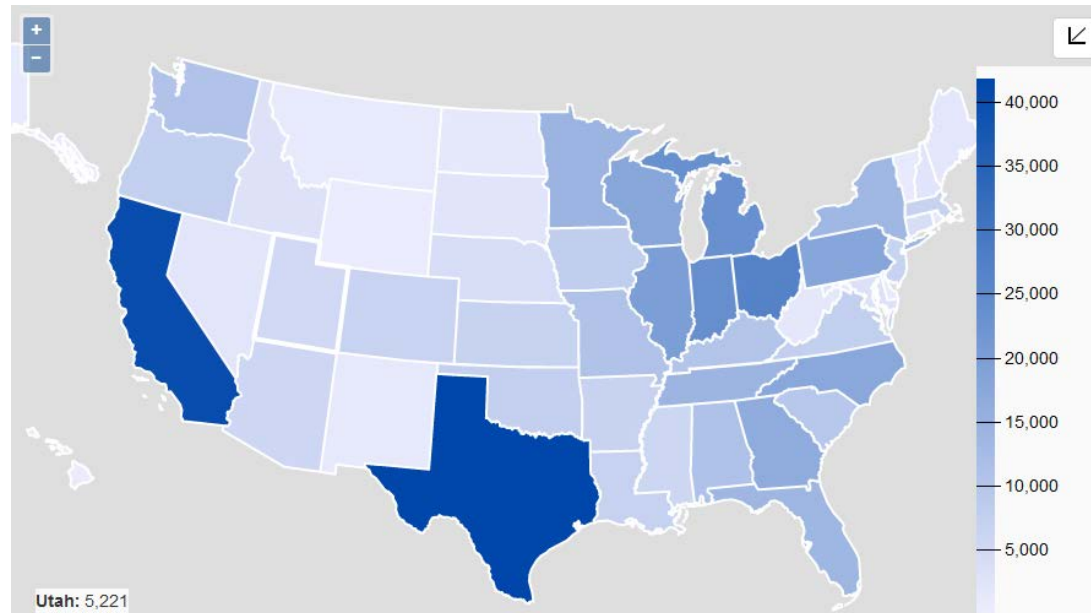
and Job-Related Census Data Tools

10 January 2018

Earlene Dowell
LEHD Program
Center for Economic Studies
U.S. Census Bureau

Outline

- What is LED and how can I use it?
- LED Public-use Data and Web Tools
- Live Demonstrations
- Questions



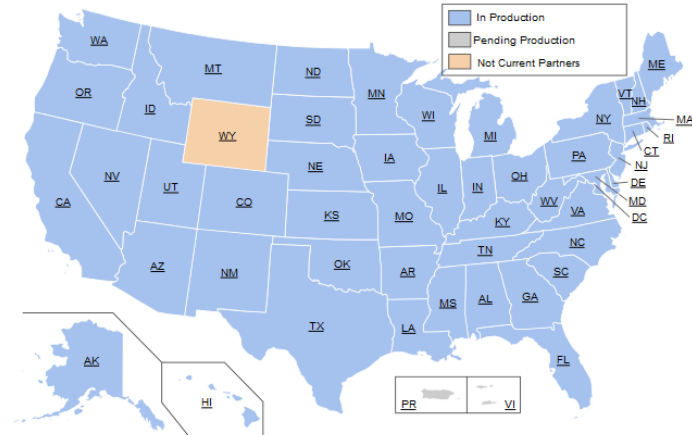
What are LEHD and LED?

- LEHD (Longitudinal Employer-Household Dynamics)
 - The LEHD Program at the US Census Bureau has constructed unique linked employer-employee data for the United States.
 - It connects administrative records with census and survey data to produce *new* public-use data products as well as microdata for research.
- LED (Local Employment Dynamics) Partnership
 - LEHD accesses state data through the LED Partnership - a cooperative partnership with states and DC, PR, and USVI
 - State-provided data:
 - Unemployment Insurance (jobs/workers)
 - Quarterly Census of Employment and Wages (firms)
 - Other data available to the Census Bureau
 - Censuses, Surveys, and Tax Information

Where Does the Data Come From?

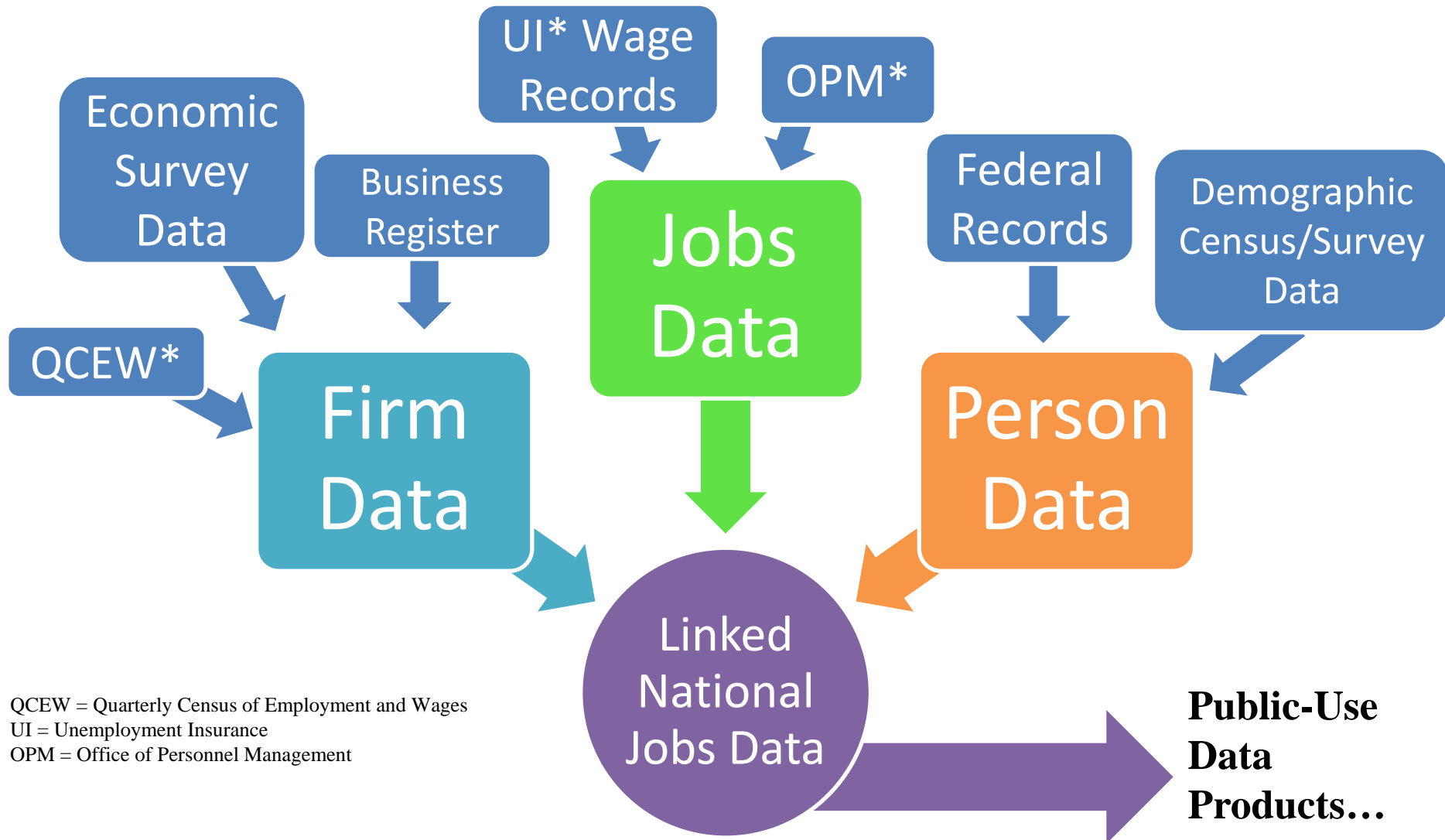
- Local Employment Dynamics (LED) Partnership
 - Begun in late 1990s with a few states
 - Not currently producing data for Alaska, Puerto Rico, and Virgin Islands

State Partners



Alabama	Illinois	Montana	Rhode Island
Alaska	Indiana	Nebraska	South Carolina
Arizona	Iowa	Nevada	South Dakota
Arkansas	Kansas	New Hampshire	Tennessee
California	Kentucky	New Jersey	Texas
Colorado	Louisiana	New Mexico	Utah
Connecticut	Maine	New York	Vermont
District of Columbia	Maryland	North Carolina	Virginia
Delaware	Massachusetts	North Dakota	Washington
Florida	Michigan	Ohio	West Virginia
Georgia	Minnesota	Oklahoma	Wisconsin
Hawaii	Mississippi	Oregon	Wyoming
Idaho	Missouri	Pennsylvania	Puerto Rico
			Virgin Islands

Admin. Records & LED Infrastructure



QCEW = Quarterly Census of Employment and Wages
UI = Unemployment Insurance
OPM = Office of Personnel Management

- Job data cover over 95% of private employment and most state, local, and federal jobs
- Data availability: 1990-2016, start year varies by state, rolling end date

Why Are LED Data Special?

- 100% Coverage of UI Covered Jobs
- Firm Characteristics crossed with Worker Characteristics
- Detailed Geography
- Data Currency
- Accessible via powerful and easy-to-use tools
- Flexible outputs: PDF reports, Excel tables, high-quality images, and shapefiles

Data Products

- Quarterly Workforce Indicators (QWI)
 - 32 indicators by
 - Industry (NAICS 2, 3, and 4-digit), Firm Age, Firm Size
 - Worker Age, Race, Ethnicity, Sex, Education
 - State, County, CBSA, WIB Area
 - >150 Million job records processed each quarter
 - Longitudinal series starts in 1990 for some states
- LEHD Origin-Destination Emp. Statistics (LODES)
 - Connects a job/worker's employment and residential locations
 - Data at census block detail
 - Less characteristic detail than QWI
- Job-to-Job Flows (J2J) - Beta
 - Flows between jobs as well as into/out of nonemployment

Choosing Among LED Data Products

What do you want?	Potential Drawbacks	Data Product
Employment, hires, separations, turnover, or earnings by detailed firm and person characteristics; quarterly time resolution; relatively short data lag	No geography below county; no residential information	QWI
Employment for detailed or customized geography; residential patterns of the workforce; relationship between worker employment and home locations	Annual time resolution; less detailed firm/person characteristics	LODES
Transitions between jobs by timing and firm or worker characteristics; transitions to/from nonemployment	No worker characteristics by firm characteristics (except geography), no geography below MSA	J2J

Dissemination Tools/Applications

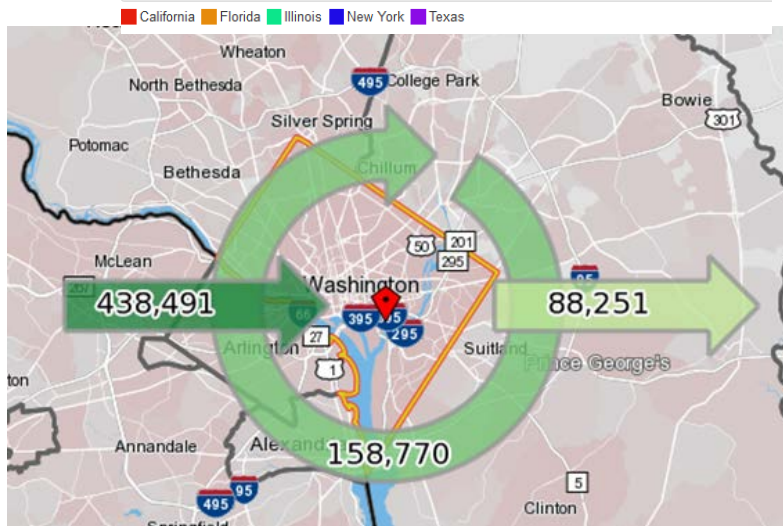
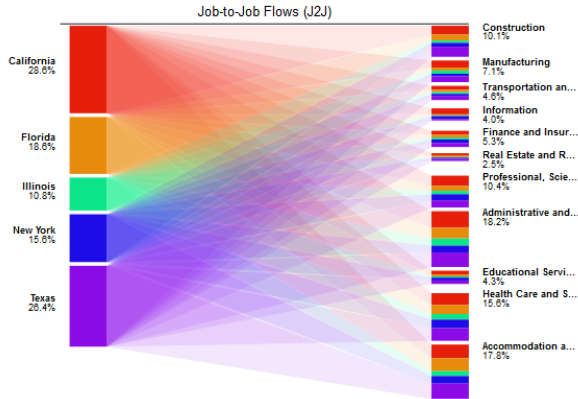
- J2J Explorer (Beta)
 - Dashboard-style analysis tool for Job-to-Job Flows
- OnTheMap
 - Map-based analysis tool for LODES
- OnTheMap for Emergency Management
 - Integrates live feeds of emergency/disaster areas
- QWI Explorer
 - Dashboard-style analysis tool for QWI
- LED Extraction Tool
 - Provides precise extracts of data (QWI only for now)

Choosing Among LED Data Access Points

Data Product	Explore the data, answer questions, or get visualizations	Bulk data for use in analysis process/software	Live queries for building web applications
QWI	QWI Explorer	LED Extraction Tool Raw data download	Census Bureau API
LODES	OnTheMap OnTheMap for Emergency Management	Raw data download	Future development
J2J	Job-to-Job Explorer	Raw data download	Future Development

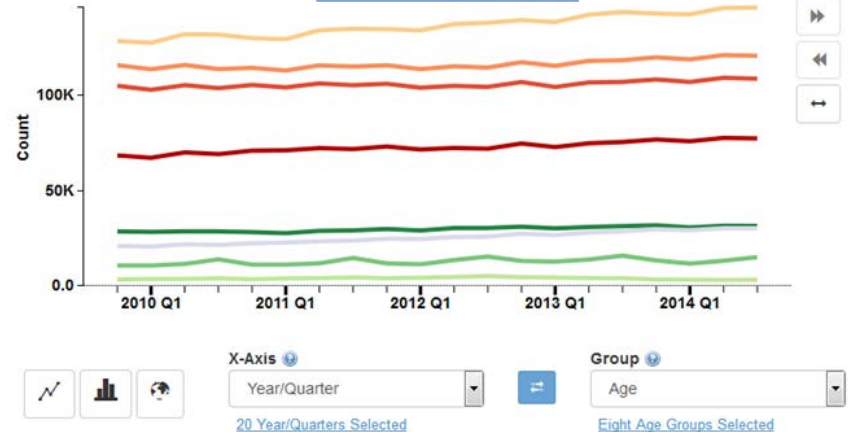
Data Tools

J2J Explorer

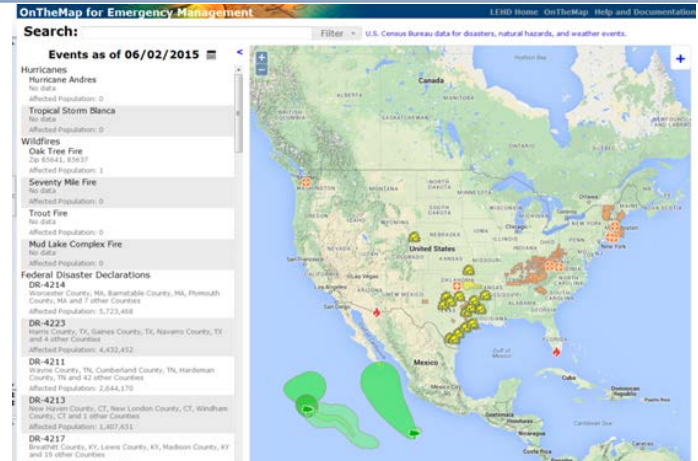


OnTheMap

QWI Explorer

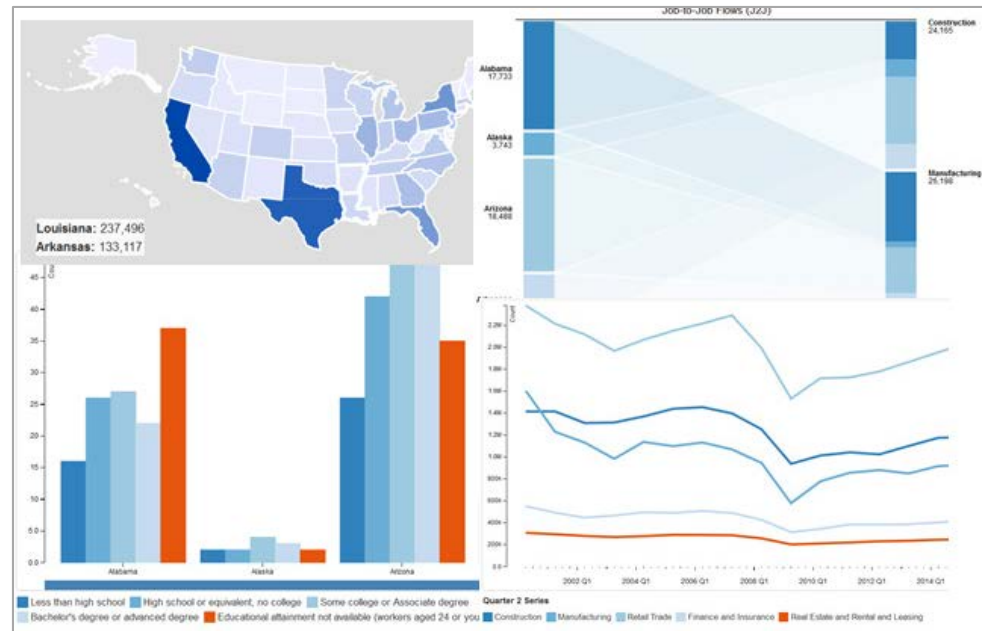


OnTheMap for Emergency Management



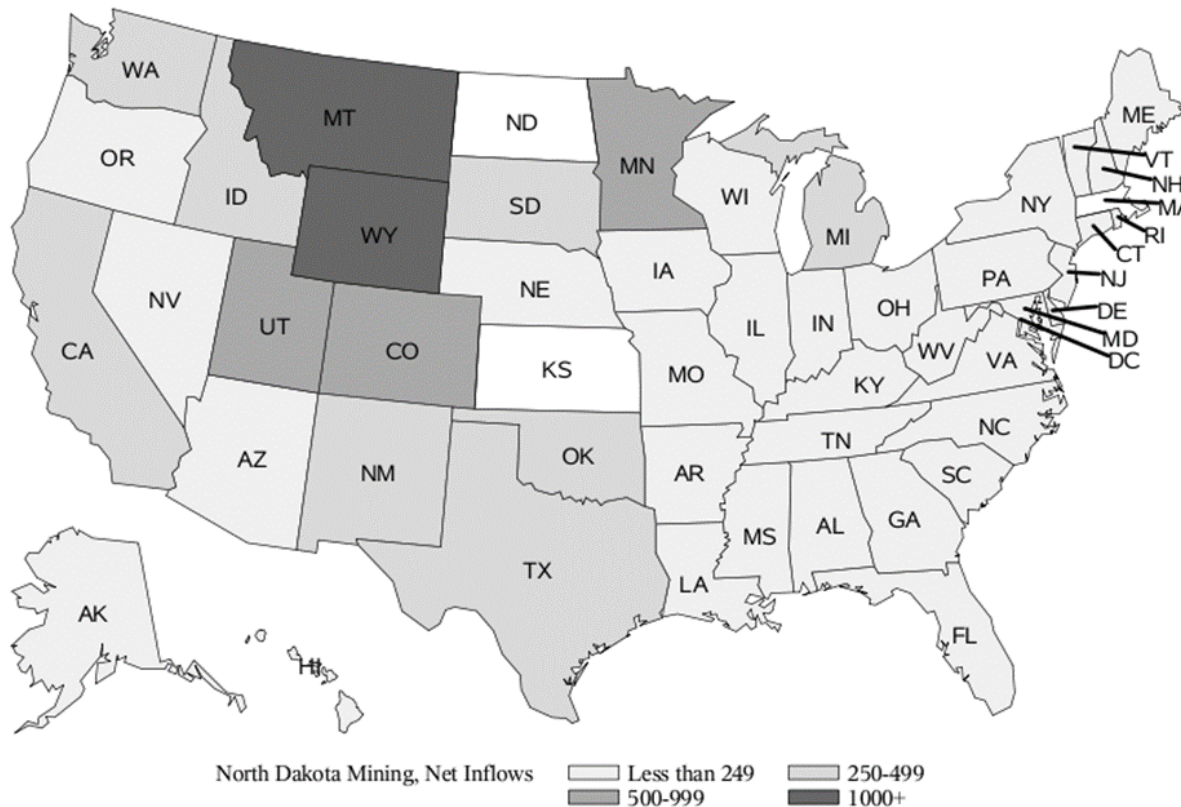
J2J Explorer

- ✓ 40 Measures of Worker Reallocation
- ✓ Six Visualization Modules with a flexible dashboard interface
- ✓ Export reports to Excel or CSV
- ✓ Trace worker movements through industries, geographic labor markets, and to/from employment
- ✓ Analyze/report by origin and destination geographies: national and state-level tabulations



- ✓ Analyze/report by origin and destination firm characteristics: NAICS Sector, firm age, and firm size
- ✓ Analyze/report by worker demographics: age, earnings, race, ethnicity, educational attainment, and sex
- ✓ Data updated every quarter

Net migration of out-of-state workers into the North Dakota mining sector: 2010-2014

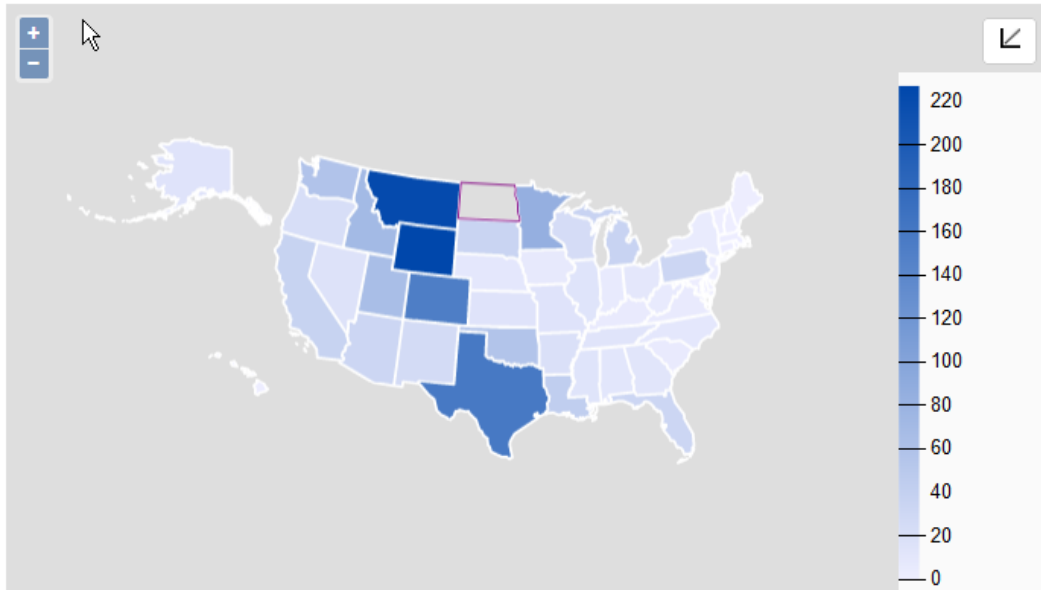
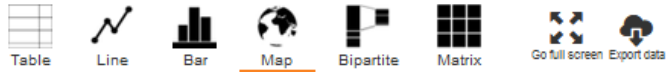


- J2J gives us a better understanding of reallocation of workers across different geographies

Source: U.S. Bureau of Census, Job-to-Job Flows

Source: J2J origin-destination data. J2J data is not yet available for Massachusetts and Kansas, data for all other states is present. Net migration of out-of-state workers is hires into the North Dakota mining sector of workers who recently held a job in a different state, minus flows of North Dakota mining workers to jobs in that state.

J2J Explorer



Job-to-Job Flows from 50 States to Mining, Quarrying, and Oil and Gas Extraction in North Dakota

Average of Q3 Series 2010 - 2014

Indicator ⓘ

Job-to-Job Flows (J2J)

Job flows with a short or no observed nonemployment spell

Geography Level ⓘ

Origin State

[Alabama](#), [Alaska](#), [Arizona](#),
[Arkansas](#), [California](#) and 45
[Others](#)

Filters ⓘ

Time

Year/Quarter

[2014 Q3](#), [2013 Q3](#), [2012 Q3](#), [2011 Q3](#), [2010 Q3](#)

Firm Characteristics

Origin NAICS Sector

All

Destination NAICS Sector

[Mining, Quarrying, and Oil and Gas Extraction](#)

Geography

Destination State

North Dakota

Clear All Notices

Average of Multiple Quarters Shown

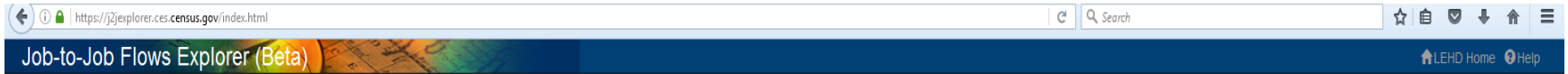
Consider selecting a single quarter in the Year/Quarter filter to see data for a point-in-time.

Privacy Policy | 2010 Census | Data Tools
Source: U.S. Census Bureau, Center for Economic and Statistics

Where are Louisiana's teachers going?

- After Hurricane Katrina, there were concerns that evacuees who were teachers weren't coming back to Louisiana
 - That they found jobs and stayed put
- In this example, we look at the J2J data to answer the question
 - How many teachers are leaving Louisiana for other jobs, both in education or in another industry?


Starting with the Guided Entry





Guided Entry

1. Start Here

Frame your question by selecting from the three dropdowns below; then click one of the blue links on the right to go to your customized results.

 Separations from

 Louisiana

 Educational Services

2. Then Choose an Analysis

Analysis of Job-to-Job Flows

From (Origin Job)	To (Destination Job)
<input checked="" type="checkbox"/> Louisiana	Which States?
<input checked="" type="checkbox"/> Educational Services	Which Industries?

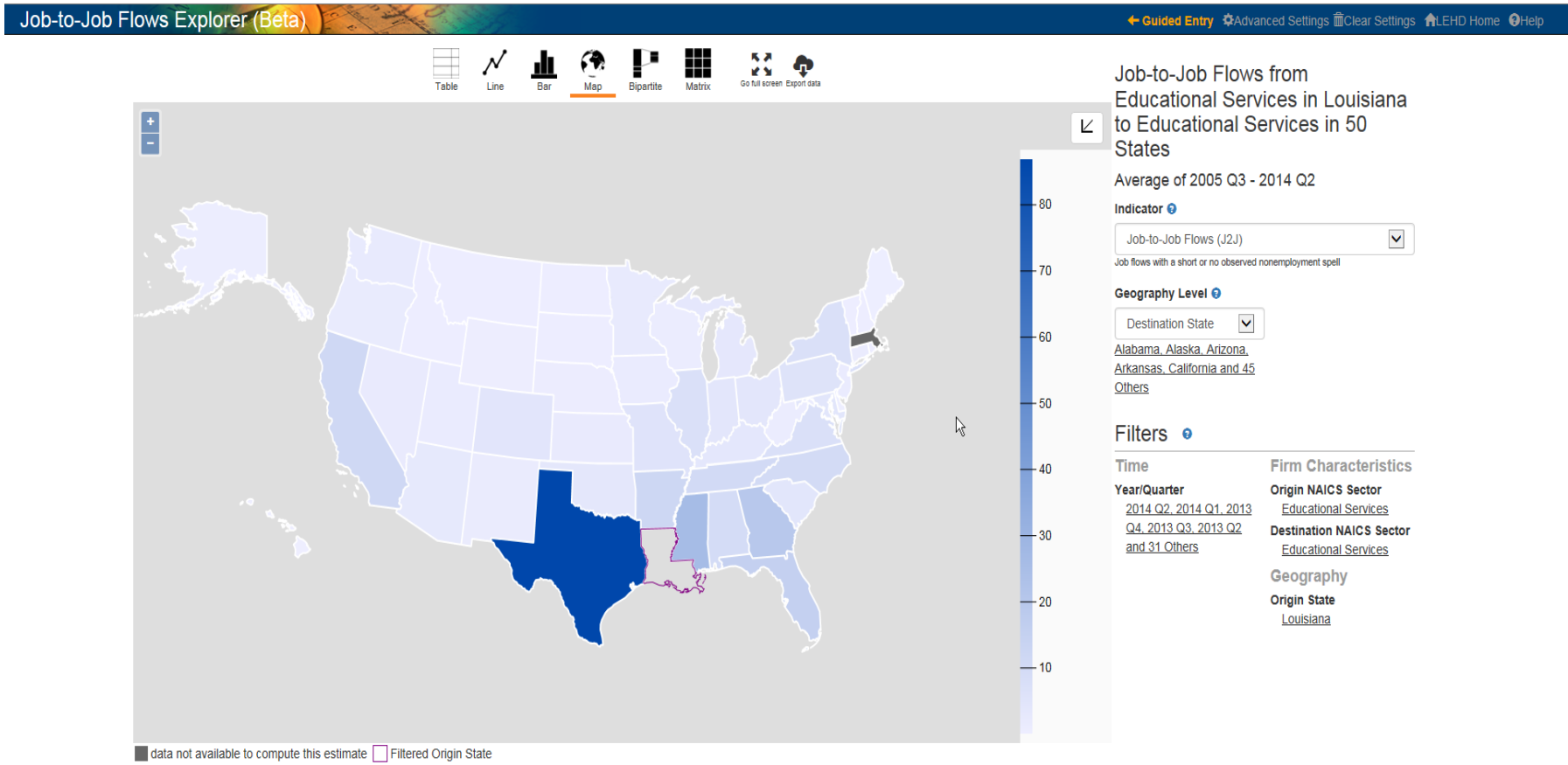
Analysis of Separations Over Time

[Are separations from jobs in Louisiana Educational Services leading to nonemployment or another job?](#)

Not sure? Try one of these recommended options:

- [Which age groups are driving worker reallocation out of New England states?](#)
- [Are workers without a college degree in North Dakota more likely to be hired from another job or from persistent nonemployment?](#)
- [What states and firm ages are workers in California start-ups hired from?](#)
- [Which industries have the highest connectivity in terms of national job flows?](#)

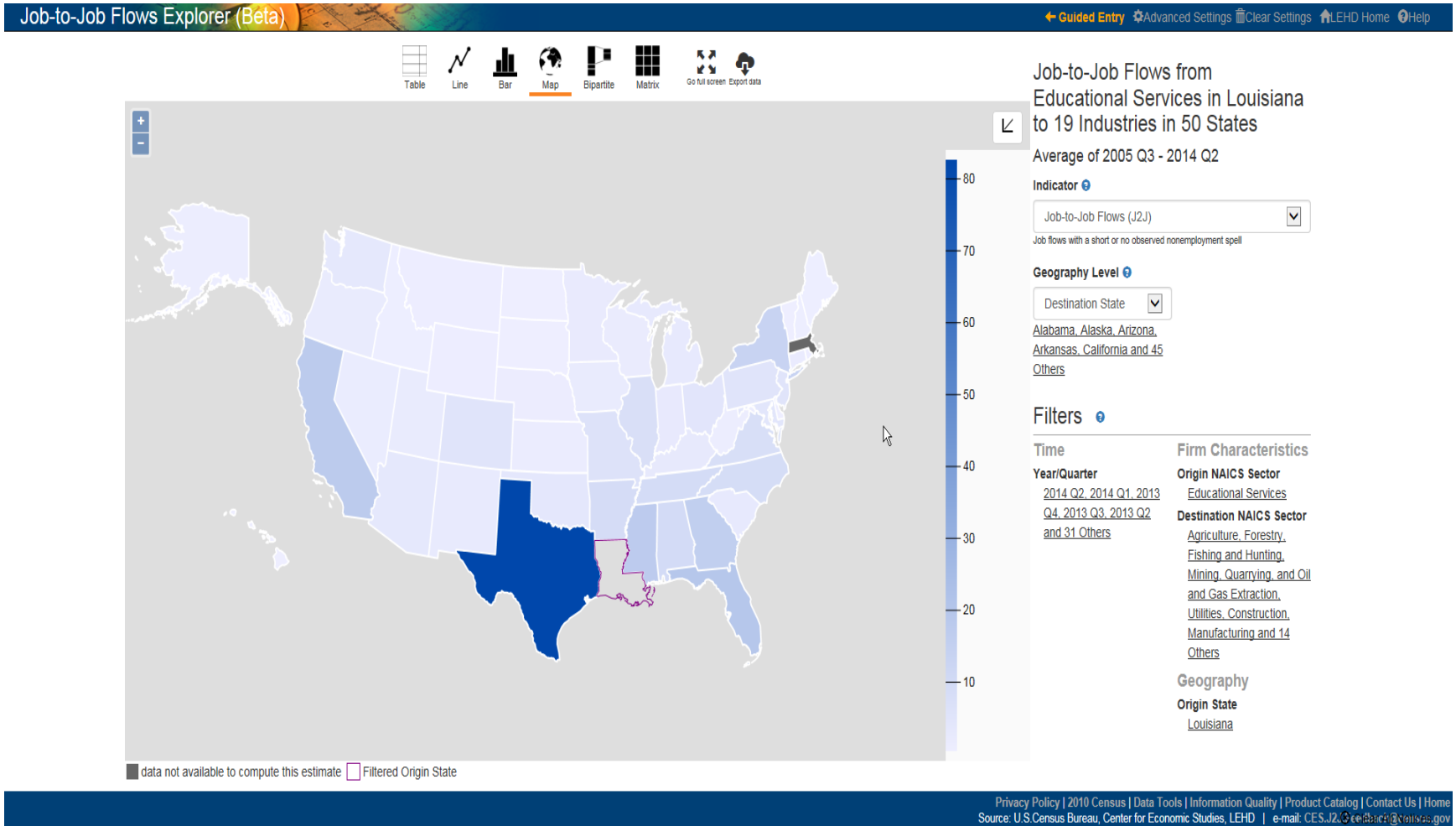
Louisiana education workers leaving to take education jobs out-of-state: 2005.3-2014.2



[Privacy Policy](#) | [2010 Census](#) | [Data Tools](#) | [Information Quality](#) | [Product Catalog](#) | [Contact Us](#) | [Home](#)
 Source: U.S. Census Bureau, Center for Economic Studies, LEHD | e-mail: CES.J2J@eeharc@census.gov

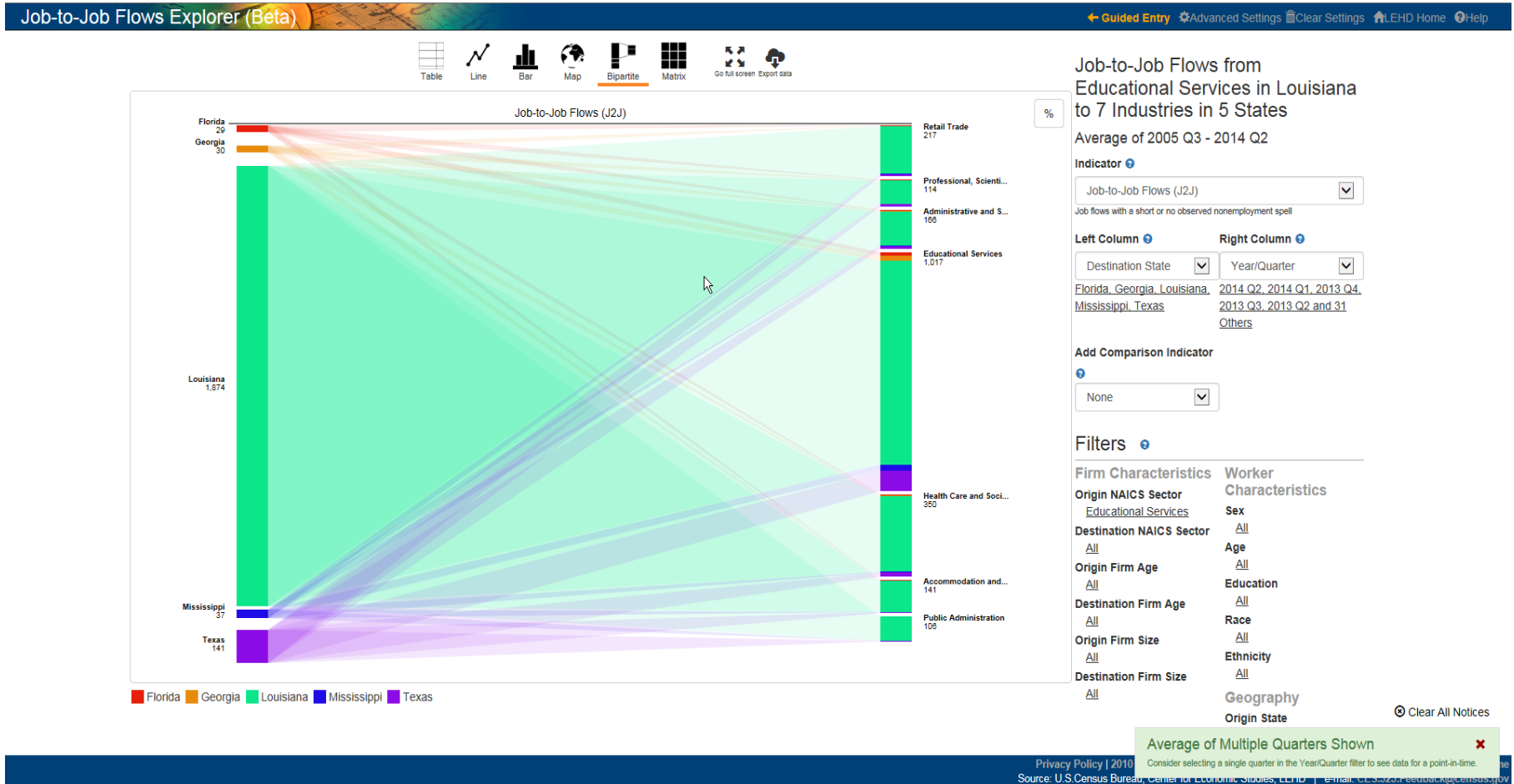
Average of Multiple Quarters Shown ✖
 Consider selecting a single quarter in the Year/Quarter filter to see data for a point-in-time.

Louisiana education workers leaving to take *non-education* jobs out-of-state: 2005.3-2014.2



Average of Multiple Quarters Shown ✖
 Consider selecting a single quarter in the Year/Quarter filter to see data for a point-in-time.

Job-to-Job Flows from Educational Services in Louisiana to 7 industries in 5 states



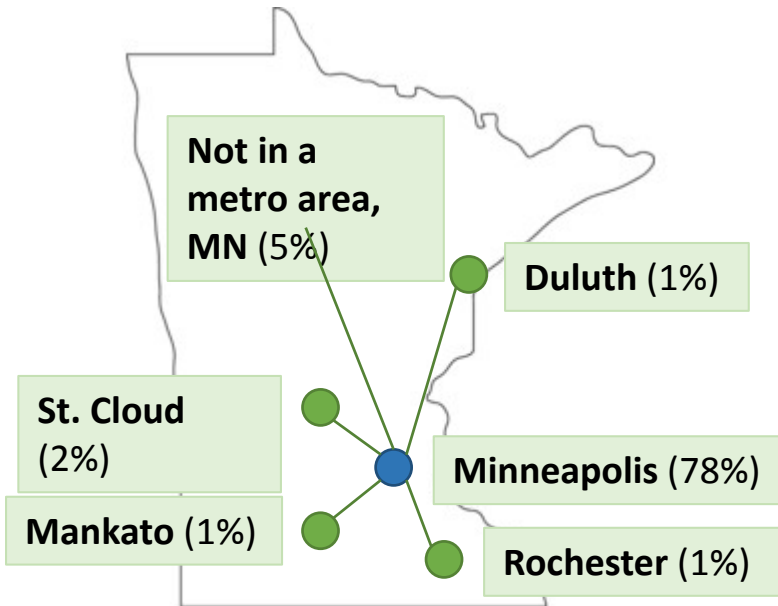
Go Live!

- <https://lehd.ces.census.gov/>
- <https://j2jexplorer.ces.census.gov/>

What's new in the newly released J2J:

- New metro-area tabulations
 - Count and origin-destination data
- New earnings variables
 - Earnings by origin and destination job in OD data
 - Earnings for hires and separations as well as job stayers in count data
- More detailed cross-tabulations
 - Industry by demographics

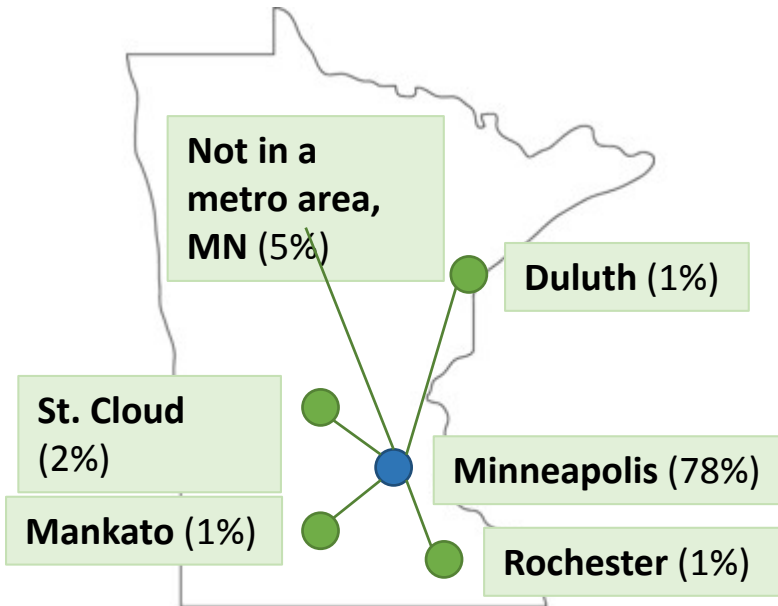
Workers leaving jobs in Minneapolis went to jobs in...



Other top destinations

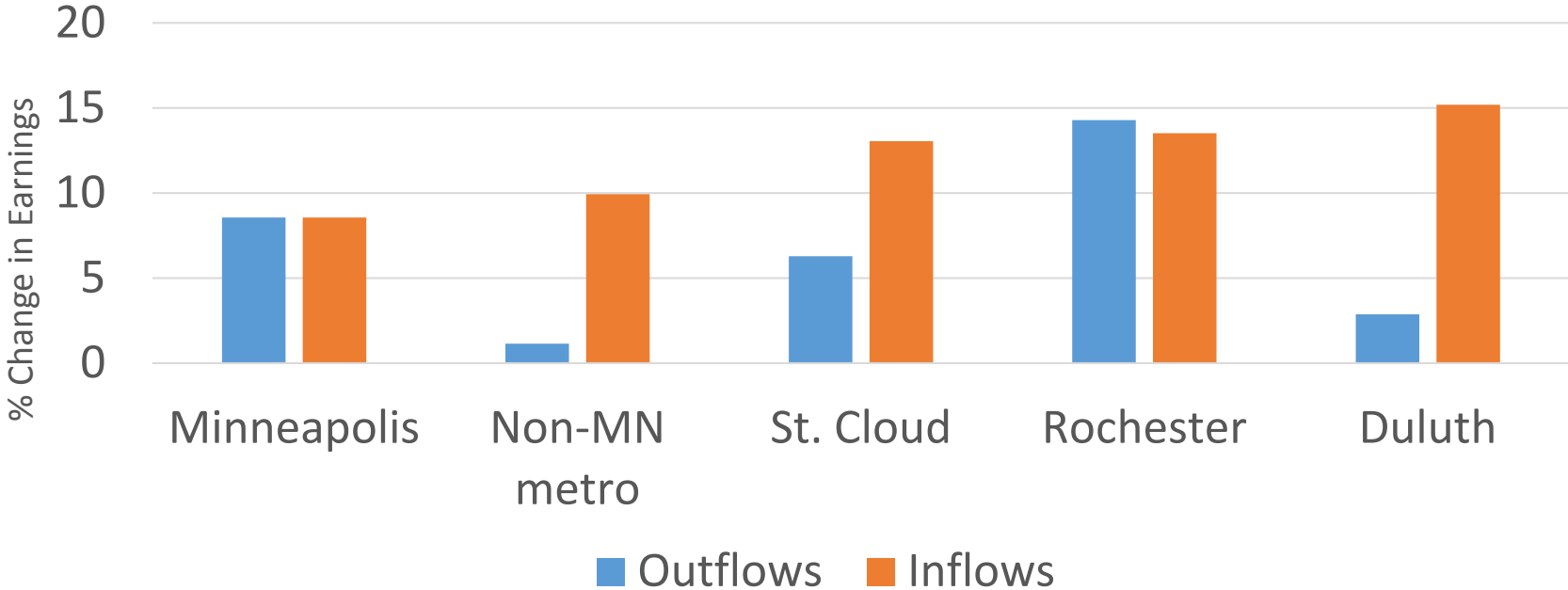
- Not in a metro area, WI (1%)
- Chicago (1%)
- Fargo (<1%)
- Los Angeles (<1%)
- Milwaukee (<1%)

Workers starting jobs in Minneapolis came from jobs in...



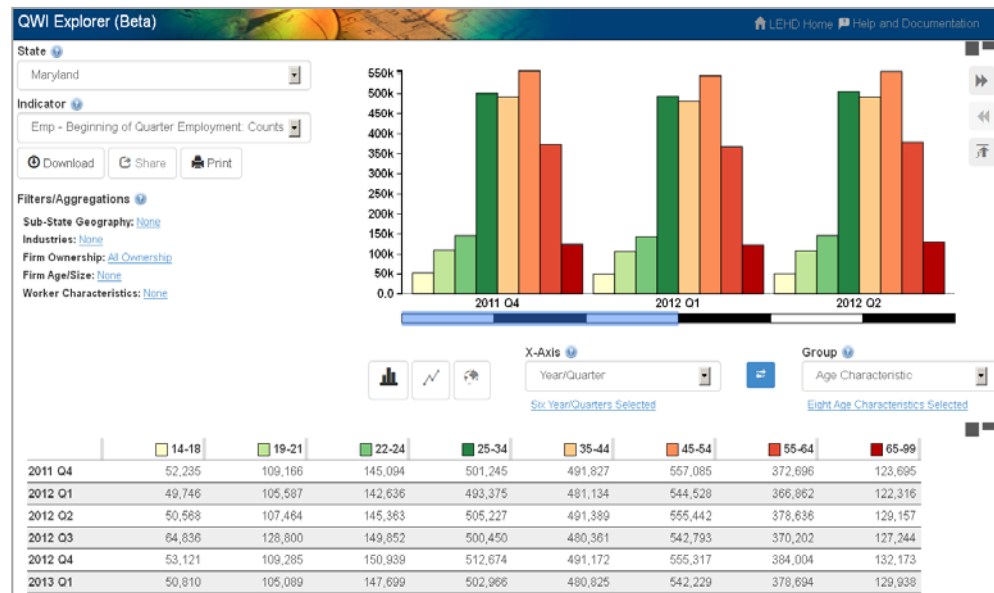
- Other top origin**
- Not in a metro area, WI (1%)
 - Chicago (1%)
 - Fargo (1%)
 - Milwaukee (<1%)
 - Eau Claire (<1%)

Earnings increased more for job changers whose new jobs were in Minneapolis



QWI Explorer

- ✓ 32 Quarterly Workforce Indicators
- ✓ Flexible Pivot Table and Map/Chart interface
- ✓ Data on detailed interactions between firms and workers include employment, employment change (individual and firm), and earnings
- ✓ Analyze/report by worker demographics: age, earnings, race, ethnicity, educational attainment, and sex



- ✓ Analyze/report by firm characteristics: NAICS classification (sector, 3, 4), firm age, and firm size
- ✓ Quarterly data very current (9-12 months old)
- ✓ National and 50 states available (plus DC)

Diversity in Greater Minnesota

Table 3: Health Care and Social Assistance Jobs by Race or Origin, 1995-2014

	Twin Cities			Greater Minnesota		
	Jobs, 1995	Jobs, 2014	Change from 1995-2014	Jobs, 1995	Jobs, 2014	Change from 1995-2014
All Races	139,870	242,620	73.5%	131,509	212,581	61.6%
White Alone	125,153	183,386	46.5%	128,388	199,429	55.3%
Black or African American	9,244	37,164	301.0%	528	4,933	834.3%
American Indian or Alaska Native	1,033	1,732	67.7%	823	2,264	175.1%
Asian or Other Pacific Islander	3,250	16,081	394.8%	1,100	3,887	253.4%
Two or More Races	1,189	4,256	257.9%	668	2,068	209.6%
Hispanic or Latino	2,482	8,753	252.7%	1,281	5,080	296.6%

Source: U.S. Census Bureau, LEHD, Quarterly Workforce Indicators

QWI Explorer

Geography Level

Minnesota

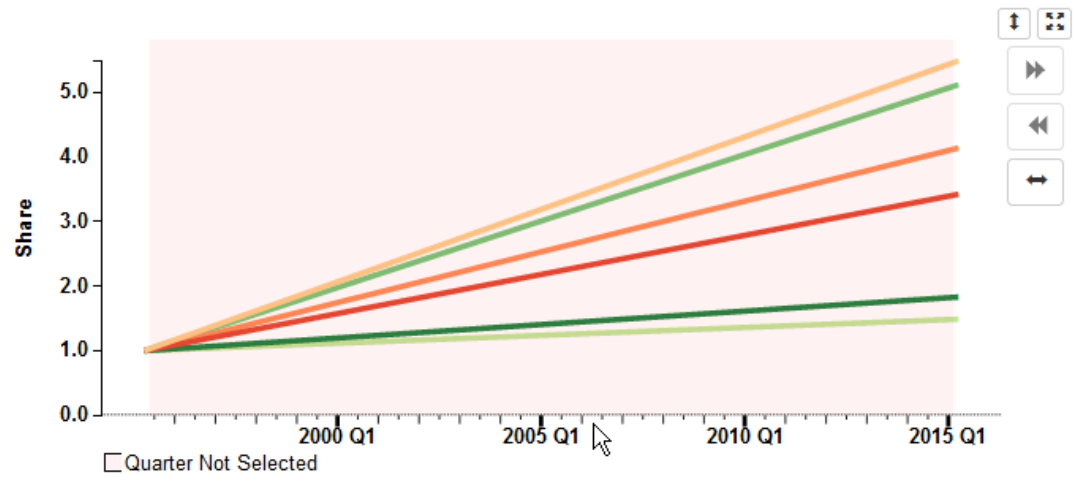
Indicator

Emp - Beginning of Quarter Employment: Cou

Get Data Share Get Report

Filters/Aggregations

Time: X-Axis
 Geography: None
 NAICS Sectors: Health Care and Social Assistance
 Firm Ownership: All Ownership
 Firm Age/Size: None
 Worker Characteristics: None



Quarter Not Selected

Line Bar Map

X-Axis
 Quarters
 Two Quarters Selected
 Normalize on X-Axis

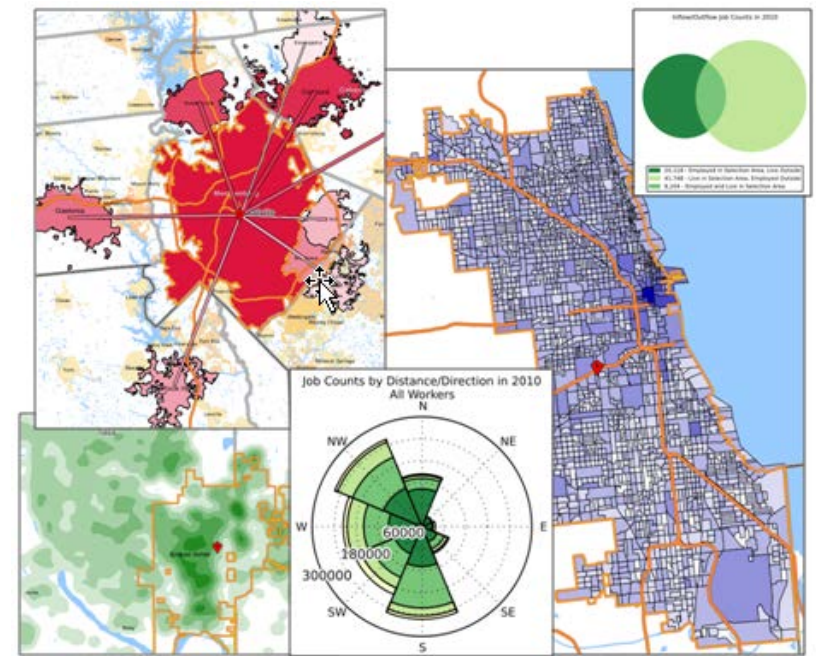
Group
 Race
 Six Races Selected
 Normalize on Group

	White Alone	Black or African American Alone	American Indian or Alaska Native Alone	Asian Alone	Native Hawaiian or Other Pacific Islander Alone	Two or More Race Groups
1995 Q2	1.000	1.000	1.000	1.000	1.000	1.000
2015 Q2	1.488	5.116	1.831	5.486	4.137	3.421

OnTheMap

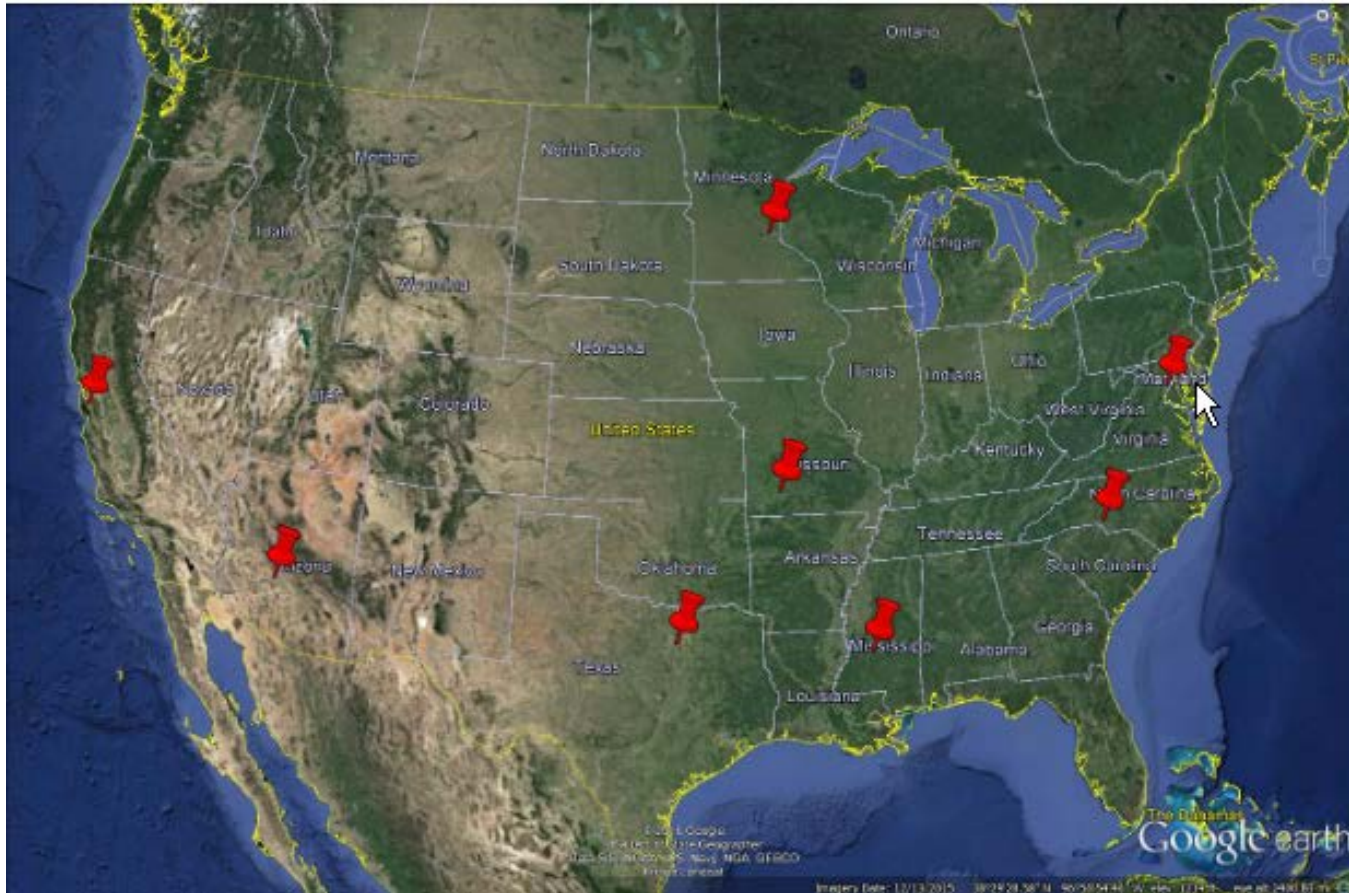
Recognized by United Nations as a major
U.S. statistical innovation

- ✓ Where do workers live?
- ✓ Where do residents work?
- ✓ What are the commuter flows of a particular area?
- ✓ Analyze/report by worker demographics: age, earnings, race, ethnicity, educational attainment, and sex
- ✓ Analyze/report by firm characteristics: NAICS Sector, firm age, and firm size



- ✓ 2002-2014 annual data (2015 coming soon!)
- ✓ 50 states available (plus DC)
- ✓ User-selected areas
- ✓ Based on Census Blocks
- ✓ Disclosure protection
- ✓ Flexible Inputs/Outputs

If You Build It Will They Come? Examining Urban Economic Growth and Development from Sports Stadiums and Arenas



Arlington, TX

OnTheMap
LEHD Home [Help](#) and [Documentation](#) [Reload](#) [Text-Only](#)

Start Base Map Selection Results
Save Load Feedback Previous Extent Hide Tabs Hide Chart/Report

Work Area Profile Analysis

enter your own subtitle

▼ Display Settings

Characteristic Filter Total

Year 2015

▼ Map Controls

Color Key ■

Thermal Overlay

Point Overlay

Selection Outline

Identify Zoom to Selection

Clear Overlays Animate Overlays

▼ Report/Map Outputs

Detailed Report

Export Geography

Print Chart/Map

▼ Legends

- 5 - 291 Jobs/Sq.Mile
- 292 - 1,151 Jobs/Sq.Mile
- 1,152 - 2,585 Jobs/Sq.Mile

[Change Settings](#)

Click a Characteristic link in the Summary Report to see more detail.

Age

Earnings

Industry Sector

Race

View as Bar Chart

Total Primary Jobs

	2015	
	Count	Share
Total Primary Jobs	13,395	100.0%

[Worker Age](#)

	2015	
	Count	Share
Age 29 or younger	3,764	28.1%
Age 30 to 54	7,029	52.5%
Age 55 or older	2,602	19.4%

[Earnings](#)

	2015	
	Count	Share
\$1,250 per month or less	3,585	26.8%

OnTheMap for Emergency Management



Hurricanes, Floods,
Winter Storms



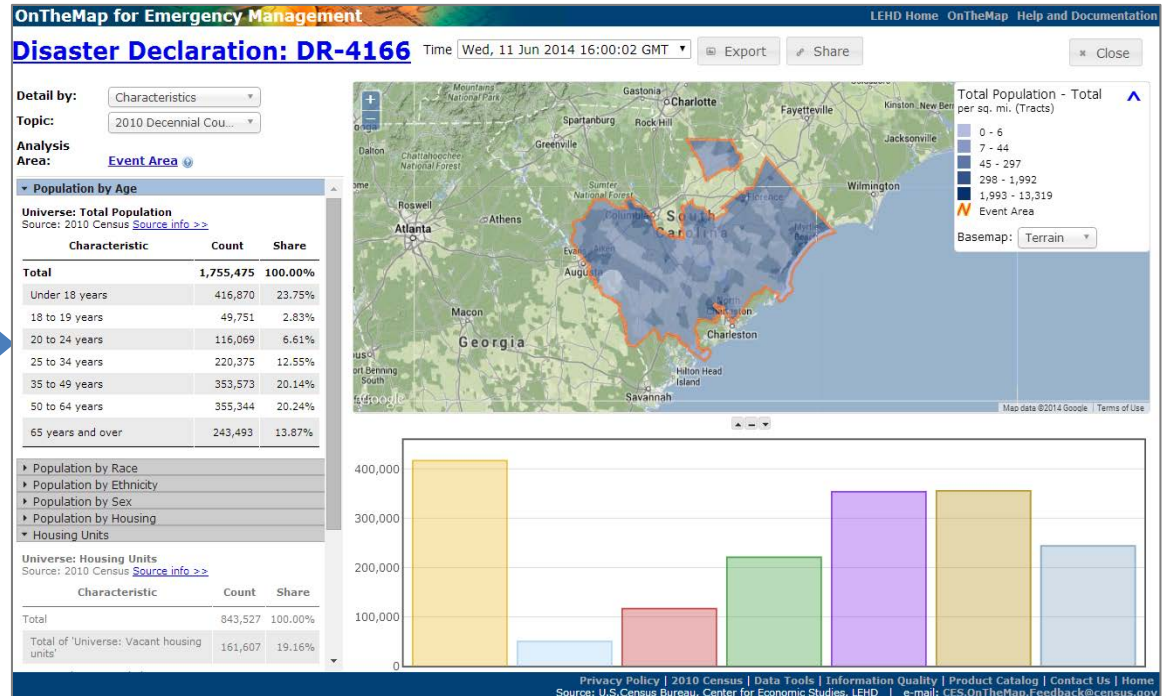
Disaster Areas



Wildfires



Demographic &
Economic Data



New Public Data Service for Emergency Preparedness & Response

- Comprehensive Reports
- Real-time Data Updates
- Easy-to-use & Interoperable
- Historical Event Archive
- Flexible Analyses & Visualizations



Mapping the Impact of Wildfires and Other Natural Disasters

In Figure 1 below, ACS population data is being mapped for areas potentially impacted by the Atlas fire that recently roared through parts of northern California (boundary as of October 11, 2017).

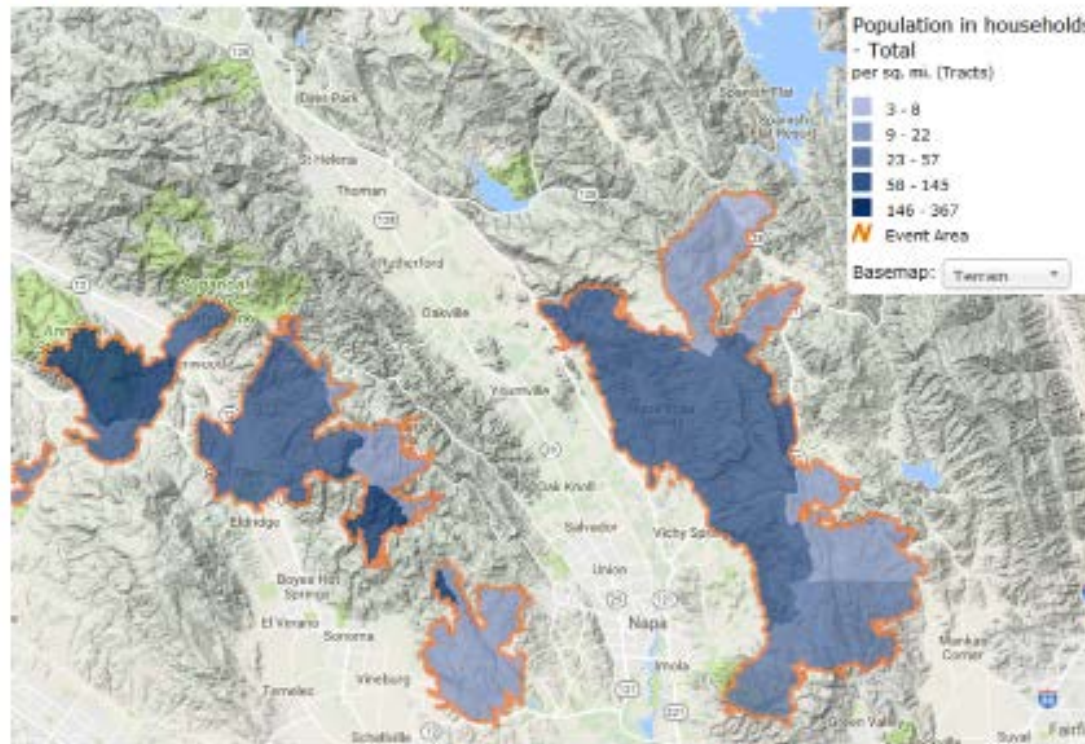


Figure 1: Population Characteristics for October 11, 2017 Atlas Fire Perimeter (Source: U. S. Census Bureau, 2011-2016 American Community Survey 5-Year Estimates, accessed via OnTheMap for Emergency Management)

EM-3396

Emergency Declaration: EM-3396

Fri, 08 Dec 2017 20:00:08 GMT

Export

Share

Close

Detail by: Characteristics

Topic: 2011-2015 ACS Char...

Analysis Area: [Event Area](#)

Household Type

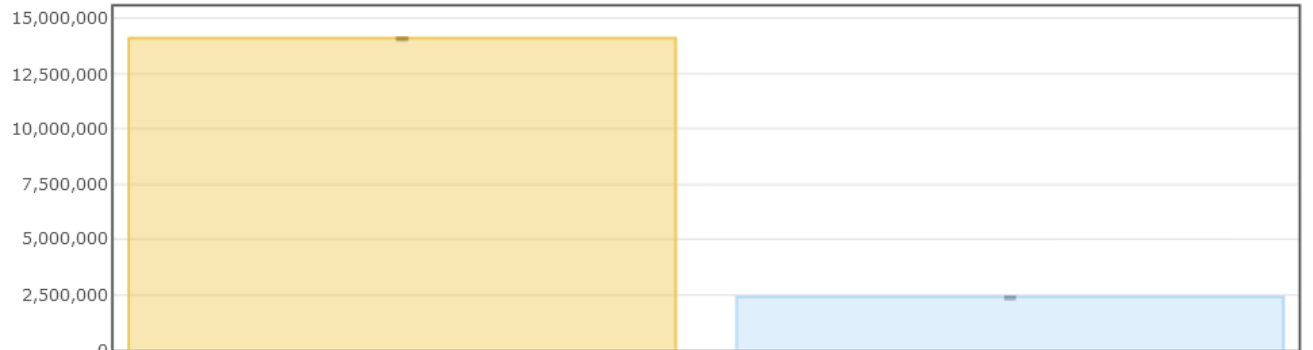
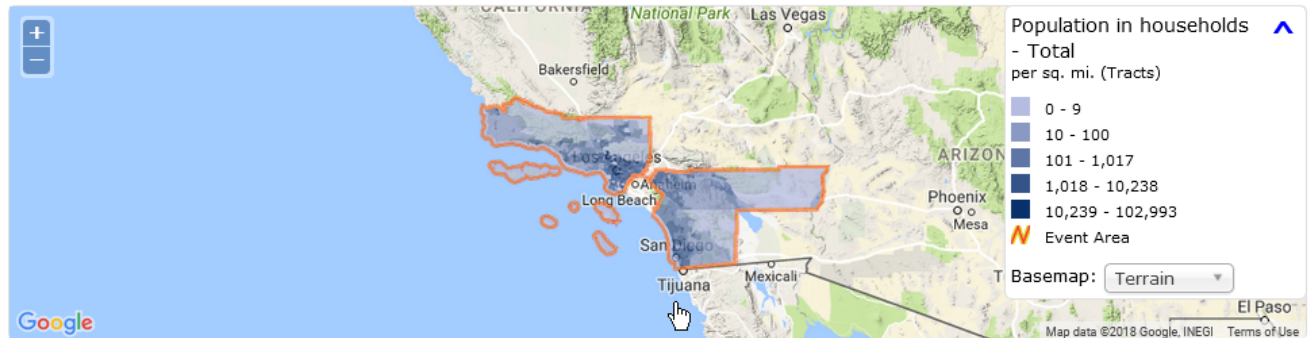
Universe: Population in households

Source: American Community Survey, 2011-2015. [Source info >>](#)

Characteristic	Estimate	Margin of Error
Total	16,507,443	±4,651
In family households	14,098,221	±13,378
In nonfamily households	2,409,222	±12,531

- Race
- Hispanic or Latino Origin
- Ability to Speak English by Age
- Ability to Speak English by Language Spoken at Home
- Disability Status by Poverty Status
- Disability Status by Age
- Ratio of Income to Poverty Level in the Past 12 Months

All tabulations contain *derived estimates and margins of error.*



Takeaways

- The LED Partnership provides unique workforce information and analysis tools at a relatively low cost
- LED data products (QWI, LODES, J2J) can give insight into **local** and regional economies and labor markets
- LED's web tools provide free, 24/7 access for users to analyze and visualize the data

Works Cited



- Suggested Citations:
 - OnTheMap Application
 - U.S. Census Bureau. 2016. OnTheMap Application. Longitudinal-Employer Household Dynamics Program. <http://onthemap.ces.census.gov/>
 - LODES Data
 - U.S. Census Bureau. 2016. LODES Data. Longitudinal-Employer Household Dynamics Program. <http://lehd.ces.census.gov/data/lodes/>

Web Addresses for Public Data Tools

- QWI Explorer
 - qwiexplorer.ces.census.gov/
- J2J Explorer
 - j2jexplorer.ces.census.gov/
- OnTheMap
 - onthemap.ces.census.gov/
- OnTheMap for Emergency Management
 - onthemap.ces.census.gov/em.html
- LED Extraction Tool
 - ledextract.ces.census.gov/

Useful Links

- **QWI Explorer**
 - [Video Walkthrough](#)
 - [Example Scenarios](#)
- **J2J Explorer**
 - [Analysis Guides](#)
 - [FAQs](#)
- **OnTheMap**
 - [Getting Started](#)
 - [Analysis Guides](#)
 - [Other Tutorials](#)

Contacts

- LEHD
 - lehd.ces.census.gov
 - CES.OnTheMap.Feedback@census.gov
 - CES.QWI.Feedback@census.gov
 - CES.J2J.Feedback@census.gov
- Data/Applications
 - lehd.ces.census.gov/data
 - lehd.ces.census.gov/applications