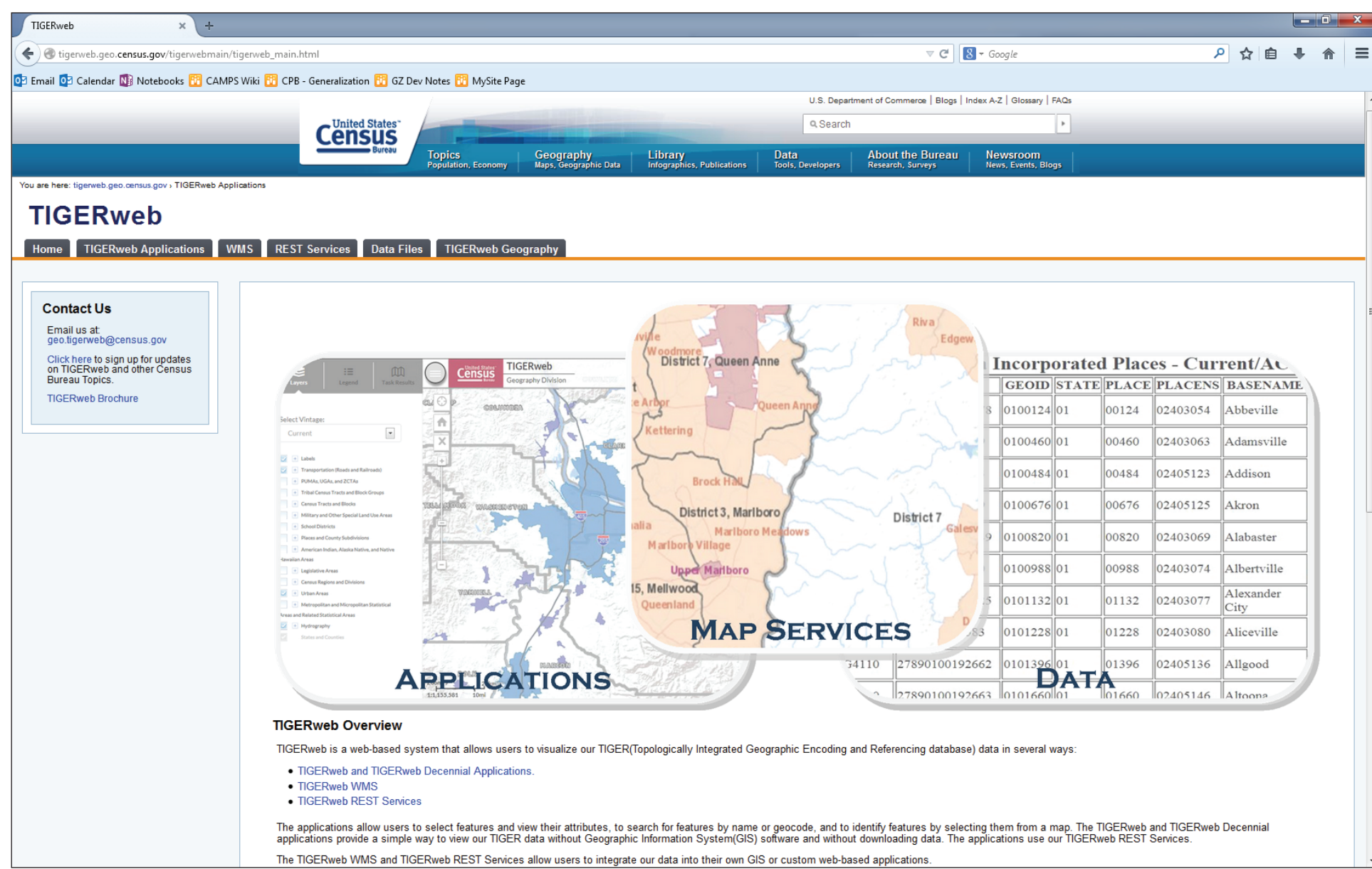


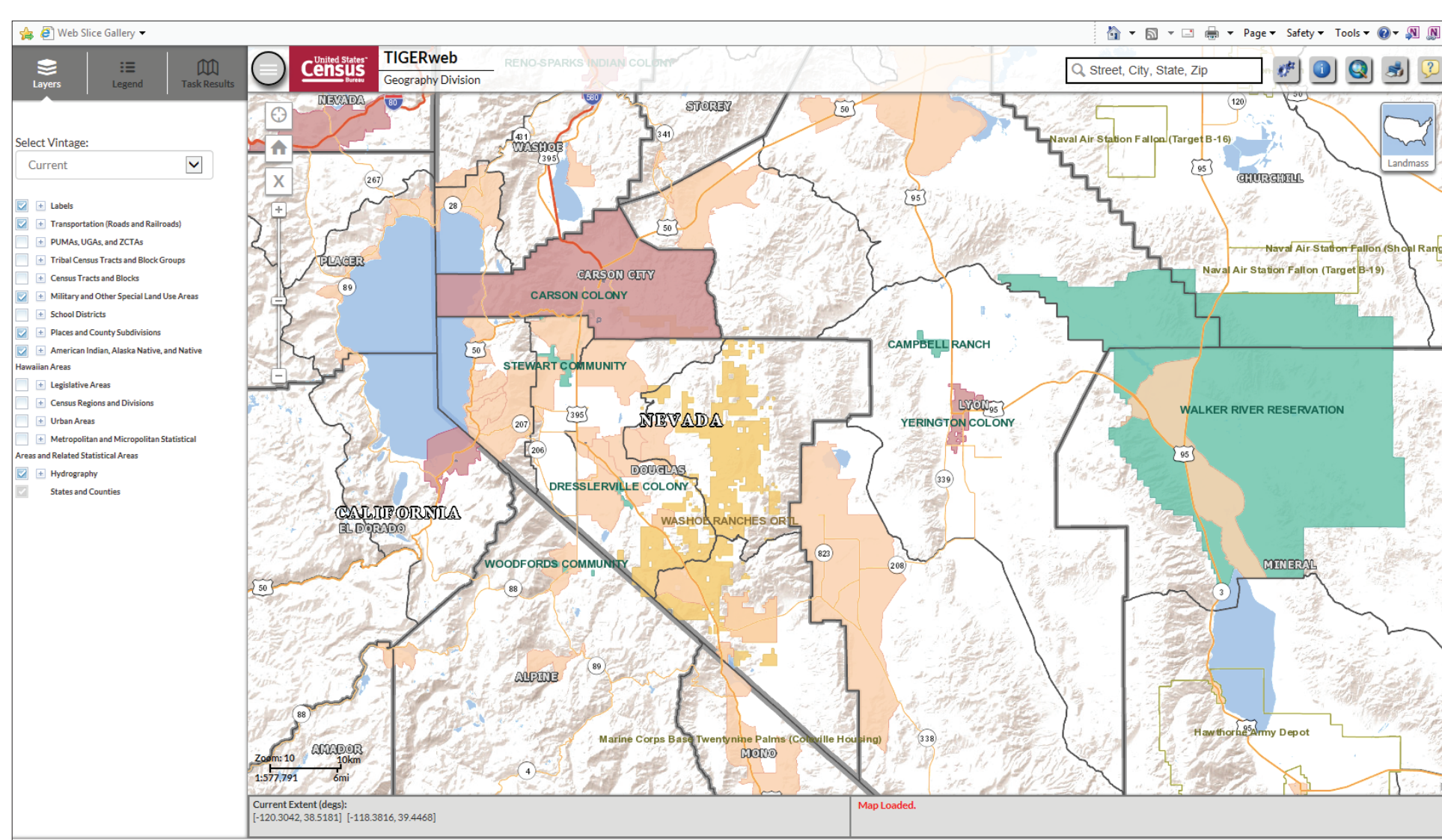
TIGERweb

<https://tigerweb.geo.census.gov>

TIGERweb is a set of web-based mapping tools and services that allows users to view legal and statistical geographic boundaries and physical features from a snapshot of TIGER, the Census Bureau's spatial database.



- TIGERweb Application
- TIGERweb Web Map Service (WMS)
- TIGERweb REST Services



The TIGERweb application contains the latest boundaries of legally defined geographic areas, generally reflecting the boundaries of governmental units in effect as of January 1, 2017. The application also includes physical features such as hydrography, transportation, and special land use areas.

Among other uses, the TIGERweb supports the annual Boundary and Annexation Survey and data dissemination.

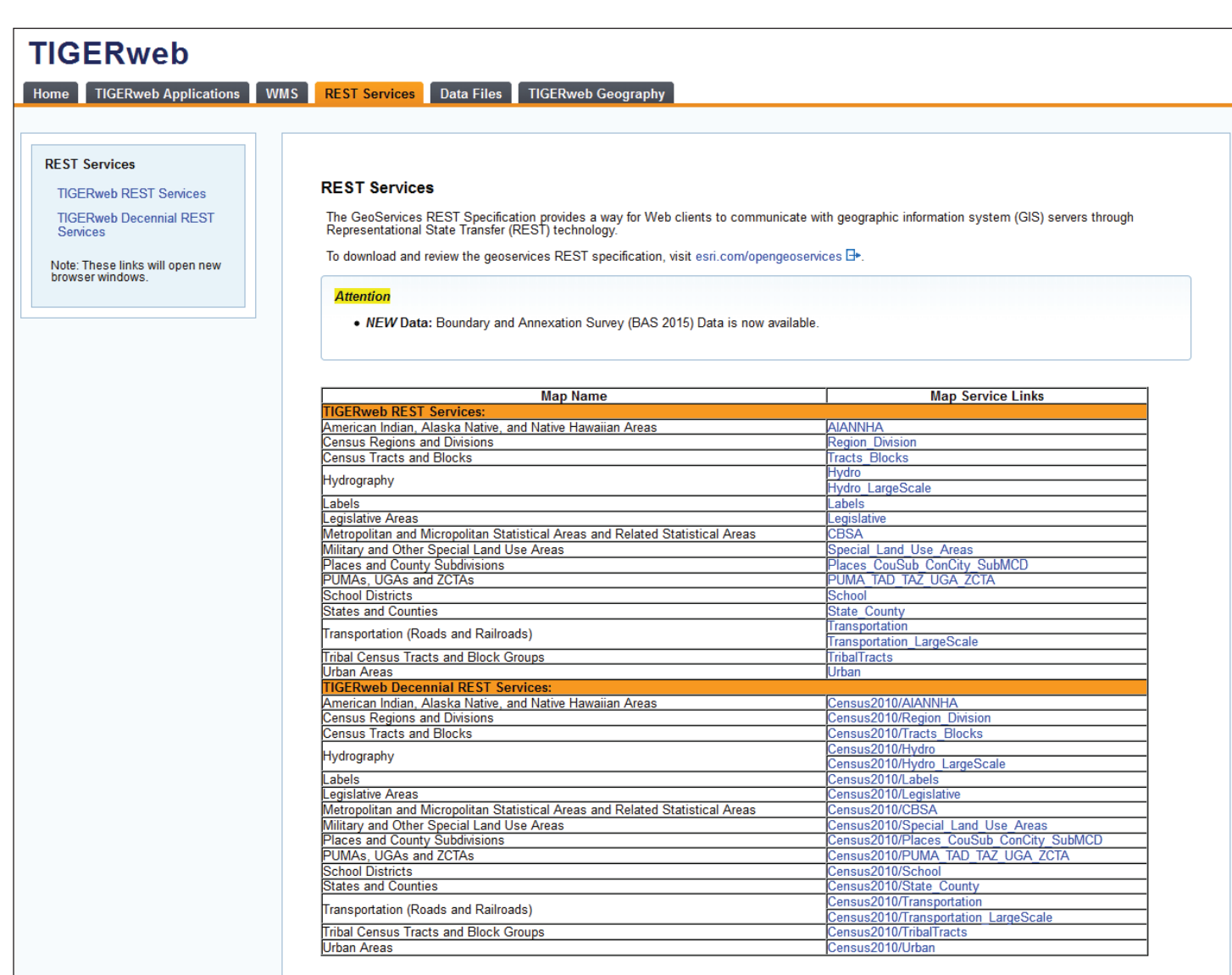
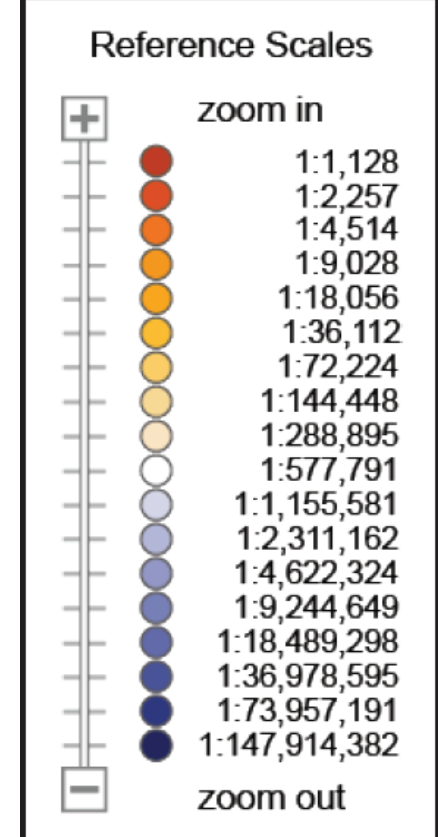
TIGERweb offers the ability to view:

- Linear features
 - Roads and highways
 - Railroads
 - Rivers and streams
- Areal features
 - Rivers, lakes, and glaciers
 - Parks, military, correctional facilities, and colleges and universities
- Boundaries for legal and statistical entities

Because geographic and locational context and relationships are important, the TIGERweb application determines which geographic entities and features may be visible based on map scale (see legend to the right).

Users have the capability to turn on and off linear features and geographic entities by type. This allows users to control the data displayed on the map.

| Map Service | Geography/Feature | Symbol | Label Style | Symbol Scales | Label Scales |
|---|--|--------|------------------------|---------------|--------------|
| Transportation (Roads and Railroads) | Interstates | | LINERY HWY | | |
| | U.S. Highways | | SHIRLEY ST | | |
| | State Highways | | NORTON DR | | |
| | Local Roads | | | | |
| | Railroads | | | | |
| PUMA, TAD, TAZ, UGA, and ZCTA | Public Use Microdata Areas | | 06001 | | |
| | Tribal Subdivisions | | TAD 11890002 | | |
| | Traffic Analysis Zones | | TAZ 00000711 | | |
| | Urban Growth Areas | | Aurora UGA | | |
| | ZIP Code Tabulation Areas | | 30907 | | |
| Tribal Census Tracts and Block Groups | Tribal Census Tracts | | T001 | | |
| | Tribal Block Groups | | TBG A | | |
| Census Tracts and Blocks | Census Tracts | | CT 51.01 | | |
| | Census Block Groups | | BG 1 | | |
| | Census Blocks | | 1055 | | |
| Military and Other Special Land Use Areas | National Park Service Areas | | Acadia Natl Pk | | |
| | Correctional Facilities | | Wright County Jail | | |
| | Colleges and Universities | | Gettysburg Collg | | |
| | Military Installations | | Ft Gordon | | |
| School Districts | Unified School Districts | | Ada Public Schools | | |
| | Secondary School Districts | | Nauset School District | | |
| | Elementary School Districts | | Erin School District | | |
| Places and County Subdivisions | Estates | | Estate Adelphi | | |
| | County Subdivisions | | Bar Harbor town | | |
| | Subbarrios | | Bayola subbarrio | | |
| | Consolidated Cities | | Indianapolis city | | |
| | Incorporated Places | | Oxford | | |
| American Indian, Alaska Native, and Native Hawaiian Areas | Alaska Native Regional Corporations | | SEALASKA ANRC | | |
| | Tribal Subdivisions | | RED LAKE CHAPTER | | |
| | Federal American Indian Reservations | | YUKON | | |
| | Off-Reservation Trust Lands | | HOPKI | | |
| | State American Indian Reservations | | MATTAPONI | | |
| | Hawaiian Home Lands | | KALAPAPPA | | |
| | Alaska Native Village Statistical Areas | | KNK | | |
| Legislative Areas | Congressional Districts | | CD 12 | | |
| | State Legislative District - Upper Chamber | | SLDU 4 | | |
| | State Legislative District - Lower Chamber | | SLDL 13 | | |
| | Voting Districts | | Union Hill VTD | | |
| Census Regions and Divisions | Census Divisions | | Mountain Div | | |
| | Census Regions | | MIDWEST REGION | | |
| Urban Areas | Urbanized Areas | | Chattanooga UA | | |
| | Urban Clusters | | Roswell UC | | |
| Metropolitan and Micropolitan Statistical Areas and Related Statistical Areas | Combined New England City and Town Areas | | Lacomb Franklin CNECTA | | |
| | New England City and Town Area Divisions | | Nashua | | |
| | Metropolitan New England City and Town Areas | | NECTA Div | | |
| | Micropolitan New England City and Town Areas | | DANBURY | | |
| | Combined Statistical Areas | | Rutland | | |
| | Metropolitan Divisions | | Bend-Prineville CSA | | |
| | Metropolitan Divisions | | Dallas-Ft. Worth | | |
| | Metropolitan Statistical Areas | | Med. Div | | |
| | 2000 Metropolitan Statistical Areas | | CHEYENNE | | |
| | Consolidated Metropolitan Statistical Areas | | Ketchikan | | |
| Hydrography | Linear Hydrography | | Stekobin Riv | | |
| | Areal Hydrography | | Fantasia LA | | |
| States and Counties | States | | OREGON | | |
| | Counties | | WAYNE | | |



TIGERweb WMS and TIGERweb REST Services allow users to integrate Census data into their GIS and/or custom web-based applications

