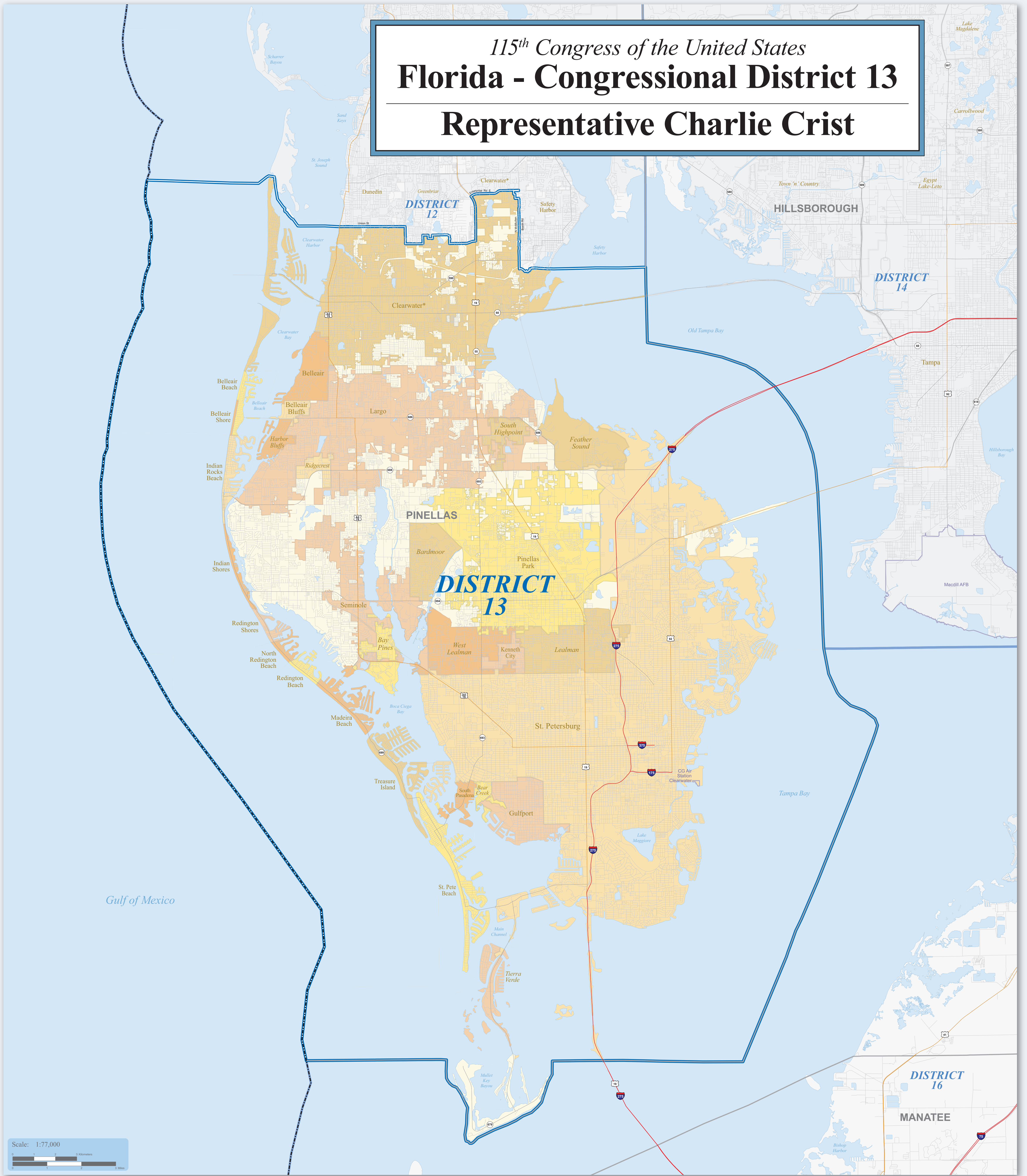


# 115<sup>th</sup> Congress of the United States

## Florida - Congressional District 13

### Representative Charlie Crist



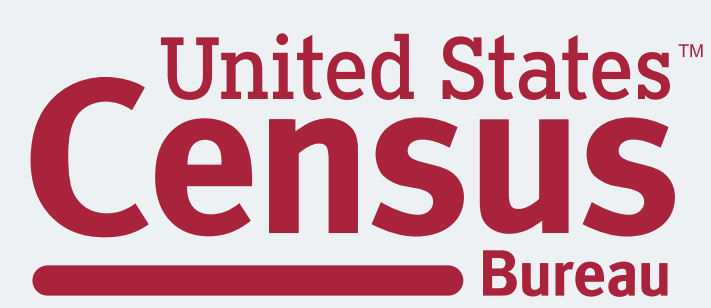
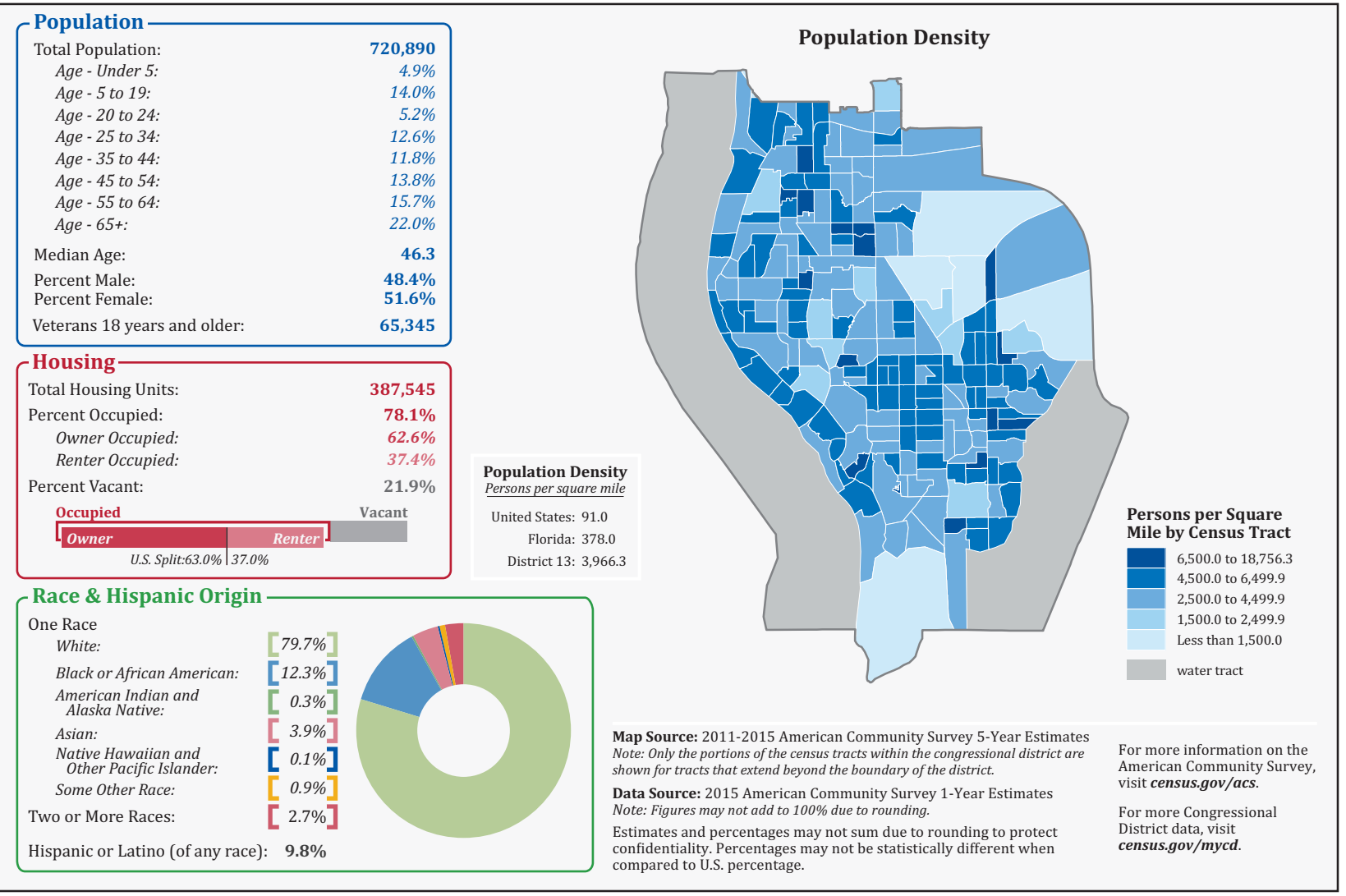
#### Map Legend

- Florida Congressional District 13
- Other Florida Congressional District
- American Indian Reservation / Off-Reservation Trust Land (Federal)†
- American Indian Reservation (State)†
- State or Statistically Equivalent Entity
- County or Statistically Equivalent Entity
- Incorporated Place (Inside of Congressional District 13)†
- Census Designated Place (CDP) (Inside of Congressional District 13)†
- Incorporated Place (Outside of Congressional District 13)†
- Census Designated Place (Outside of Congressional District 13)†
- Military Installation
- Water Body
- Interstate
- U.S. Highway
- State Highway or State Recognized Road
- Other Road or Ferry

†Labels for entities located both inside and outside of Congressional District 13 include a "†".

Congressional districts are those in effect for the 115th Congress of the United States (January 2017-2019); all other legal boundaries and names are as of January 1, 2010. The boundaries shown on this map are for Census Bureau statistical data collection and tabulation purposes only; their depiction and designation for statistical purposes does not constitute a determination of jurisdictional authority or rights of ownership or entitlement. Source: U.S. Census Bureau's MAF/TIGER database (TAB10) Projection: State-based Albers' Equal Area

#### Congressional District 13 Profile



For general information, contact the Congressional Affairs Office at (301) 763-6100. For more information regarding congressional district plans as a result of the 2010 Census, redistricting, and voting rights data, contact the Census Redistricting and Voting Rights Data Office at (301) 763-8039 or www.census.gov/redist. For information regarding other U.S. Census Bureau products, visit www.census.gov.

#### Location of Florida's 13<sup>th</sup> Congressional District - 27 Districts Total

