

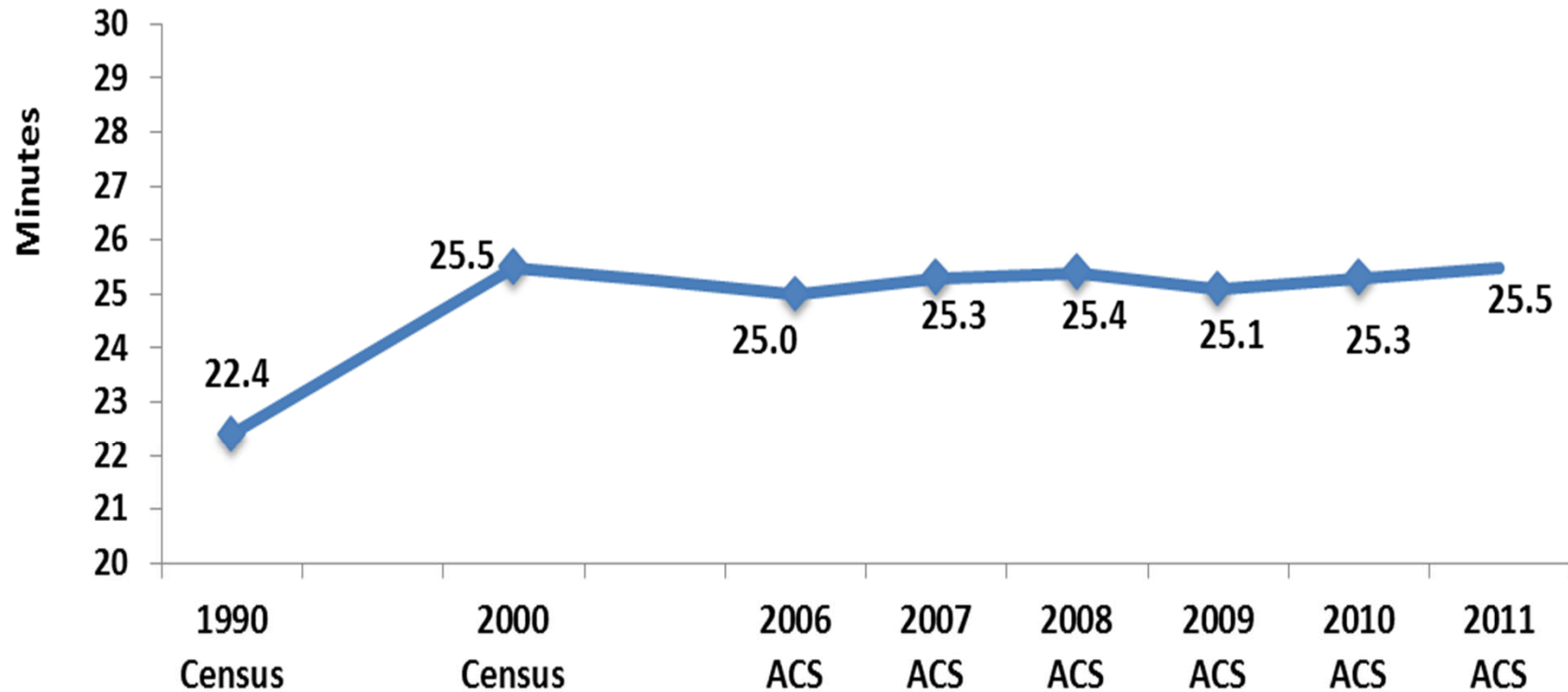
A Look at Commuting Patterns in the United States from the American Community Survey

U.S. Census Bureau

Commuting Highlights

- More than a fourth of all U.S. workers live in a different county than where they work.
- Average one-way travel time to work is 25.5 minutes.
- More than 75% of workers drive to work alone.
- Automobile commuting down by about 2% since 2000.

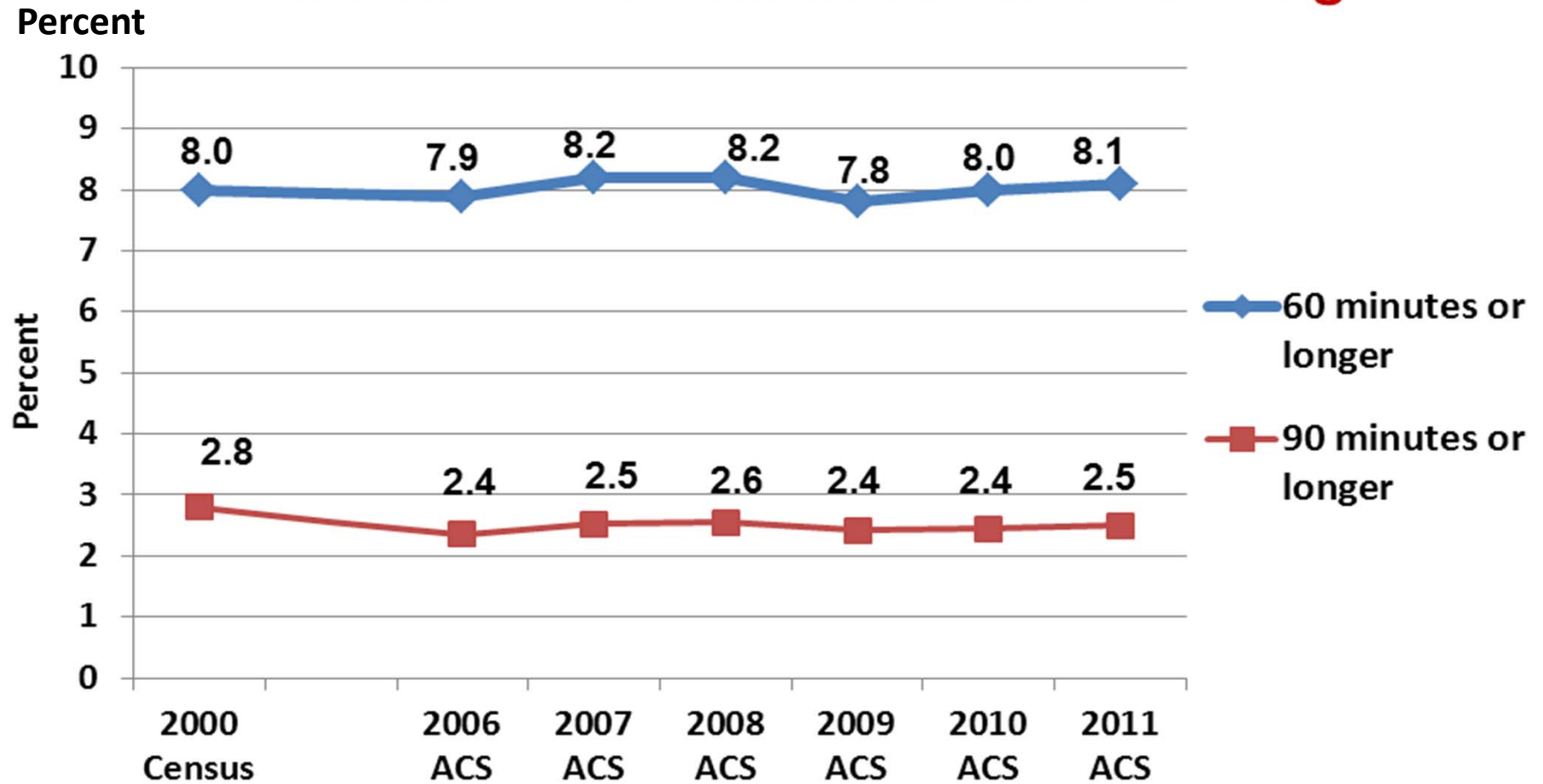
Travel Time to Work (One Way) (1990 to 2011)



Sources: Decennial Census 1990, 2000.

American Community Survey, 2006, 2007, 2008, 2009, 2010, 2011.

Percent of Workers with One-Way Commutes of 60 and 90 Minutes or Longer

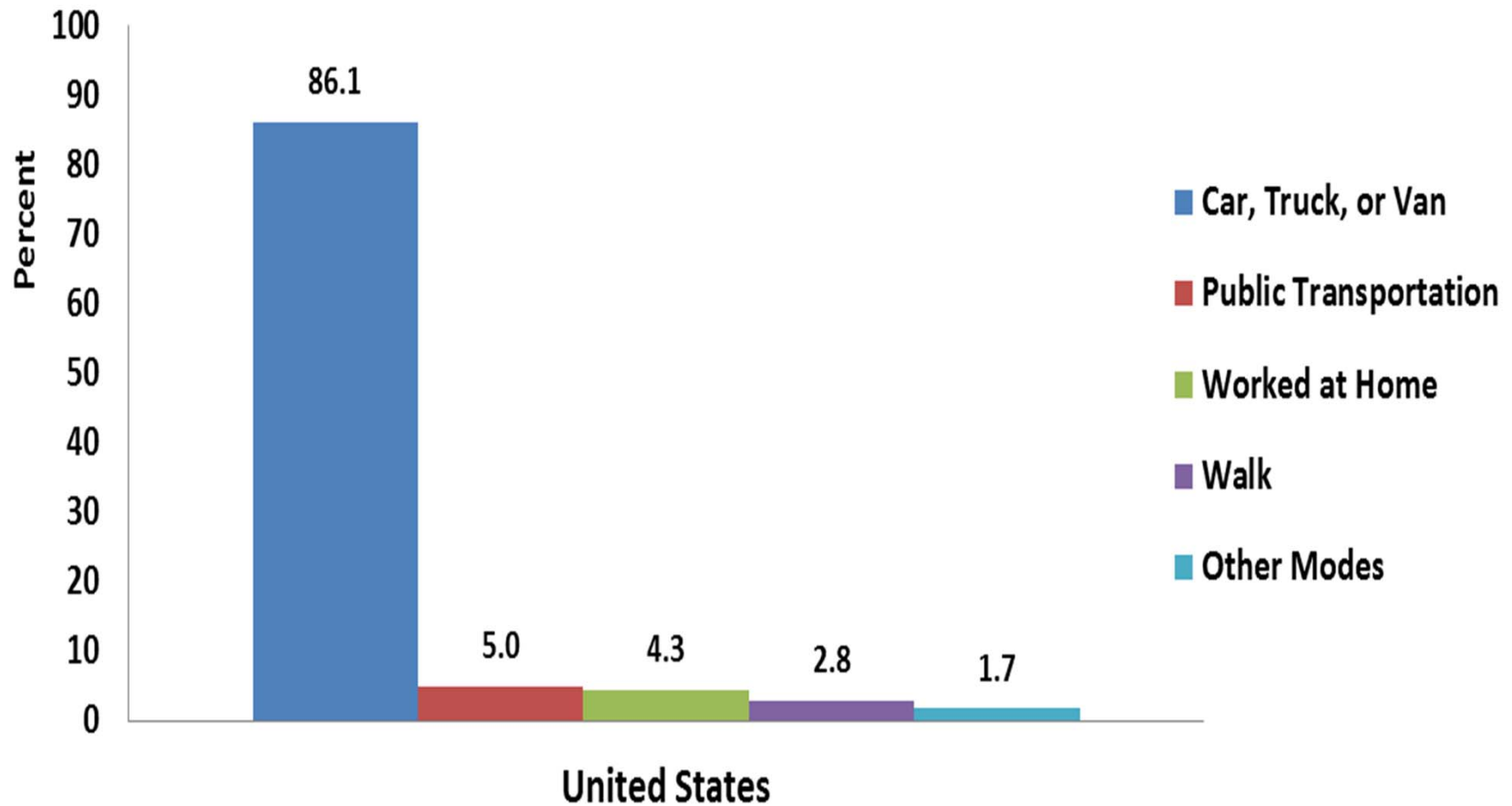


U.S. Metropolitan Areas with the 10 Longest Average Commutes: 2011

Metropolitan Statistical Area	Mean Travel Time to Work (minutes)	Margin of Error (\pm)
New York-Northern New Jersey-Long Island, NY-NJ-PA	34.9	0.2
Washington-Arlington-Alexandria, DC-VA-MD-WV	34.5	0.3
Poughkeepsie-Newburgh-Middletown, NY	31.8	1.0
Winchester, VA-WV	31.6	2.1
Riverside-San Bernardino-Ontario, CA	31.0	0.5
Chicago-Joliet-Naperville, IL-IN-WI	30.9	0.2
Atlanta-Sandy Springs-Marietta, GA	30.6	0.4
Baltimore-Towson, MD	30.3	0.3
Hagerstown-Martinsburg, MD-WV	30.2	1.7
Boston-Cambridge-Quincy, MA-NH	29.2	0.3

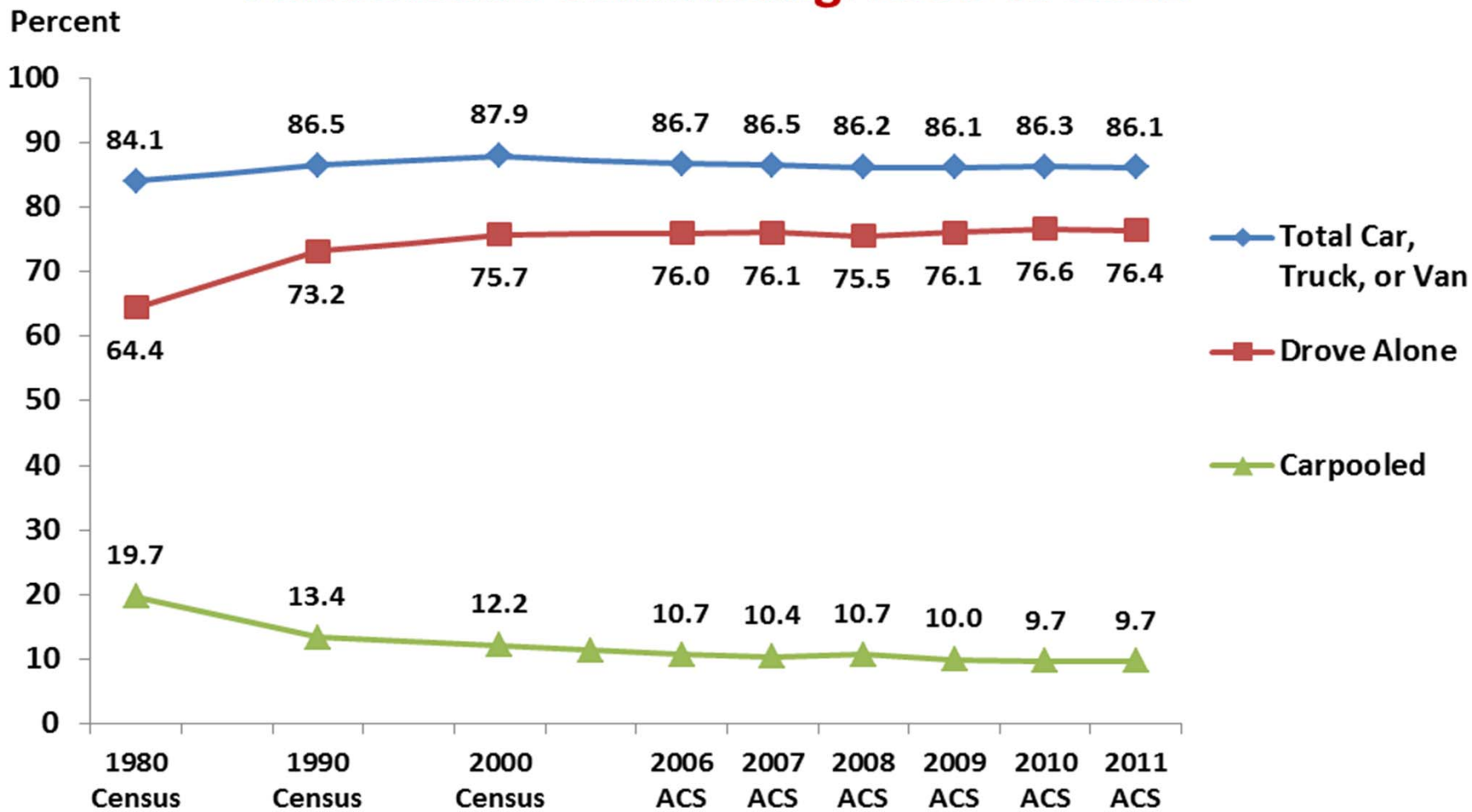
Source: American Community Survey 2011.

How People Get to Work: 2011



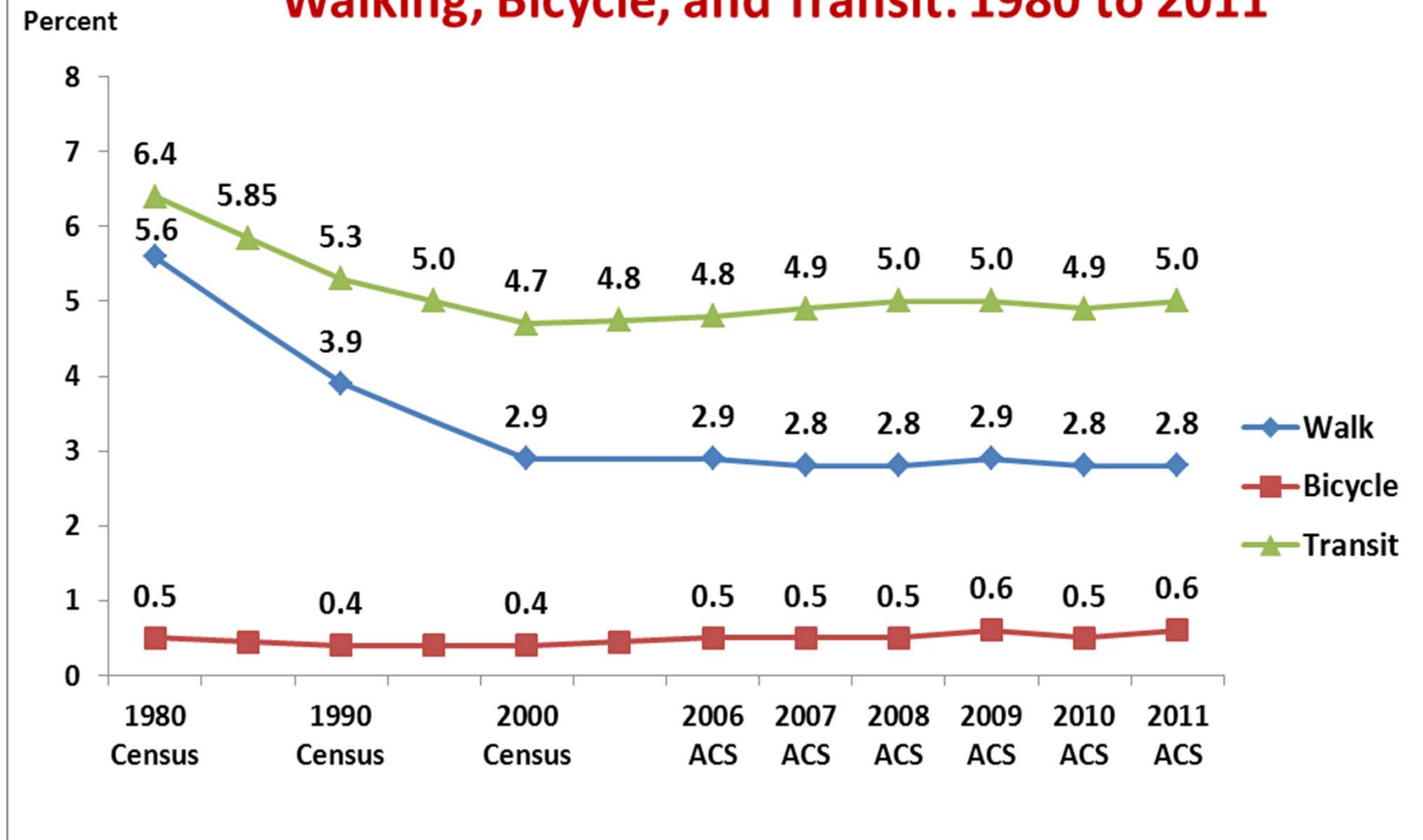
Source: American Community Survey, 2011.

Automobile Commuting: 1980 to 2011



Sources: Decennial Census 1980, 1990, 2000.
American Community Survey, 2006, 2007, 2008, 2009, 2010, 2011.

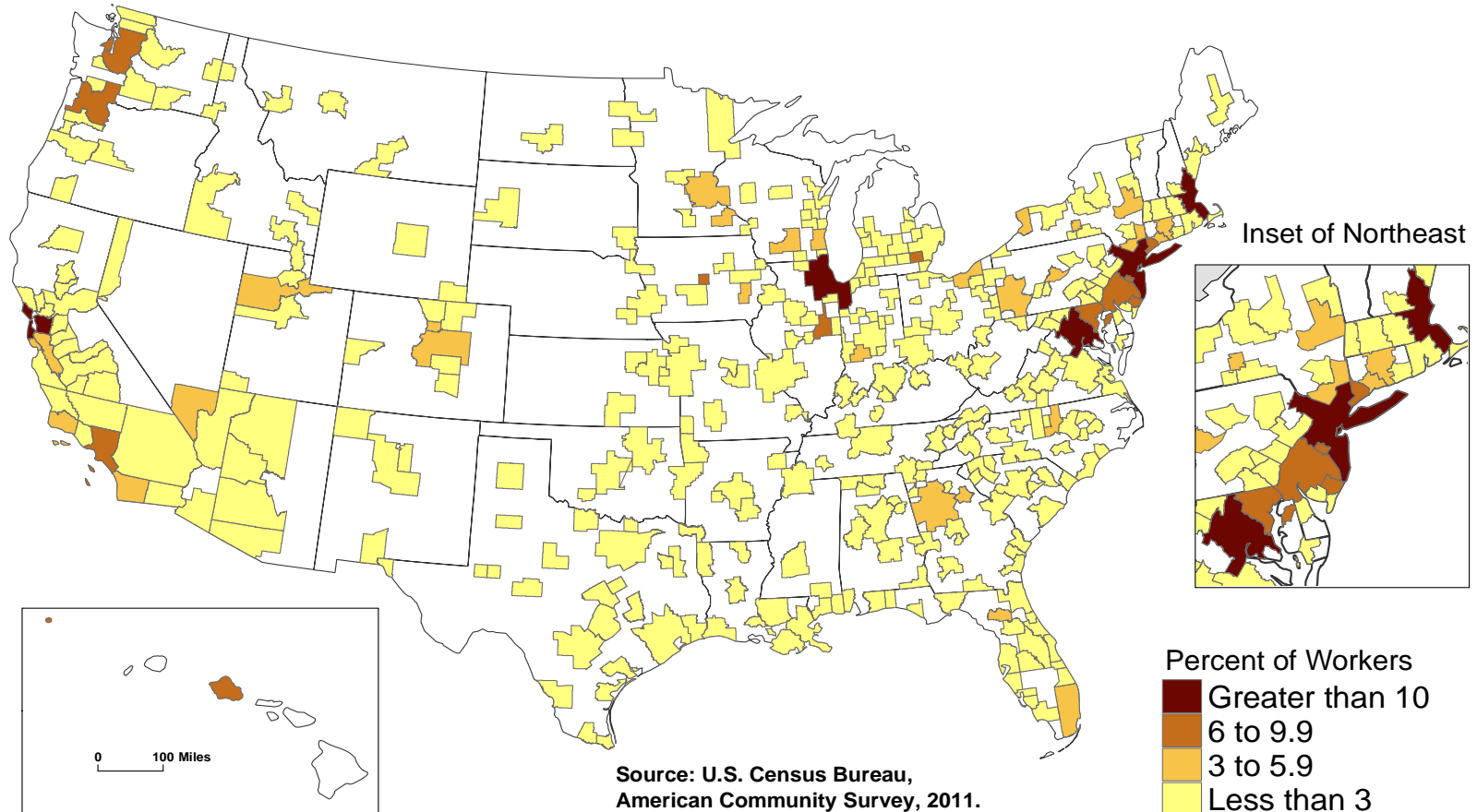
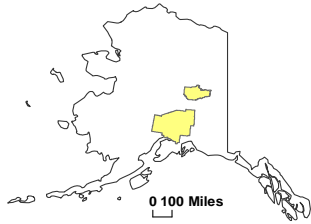
Walking, Bicycle, and Transit: 1980 to 2011



Sources: Decennial Census 1980, 1990, 2000.

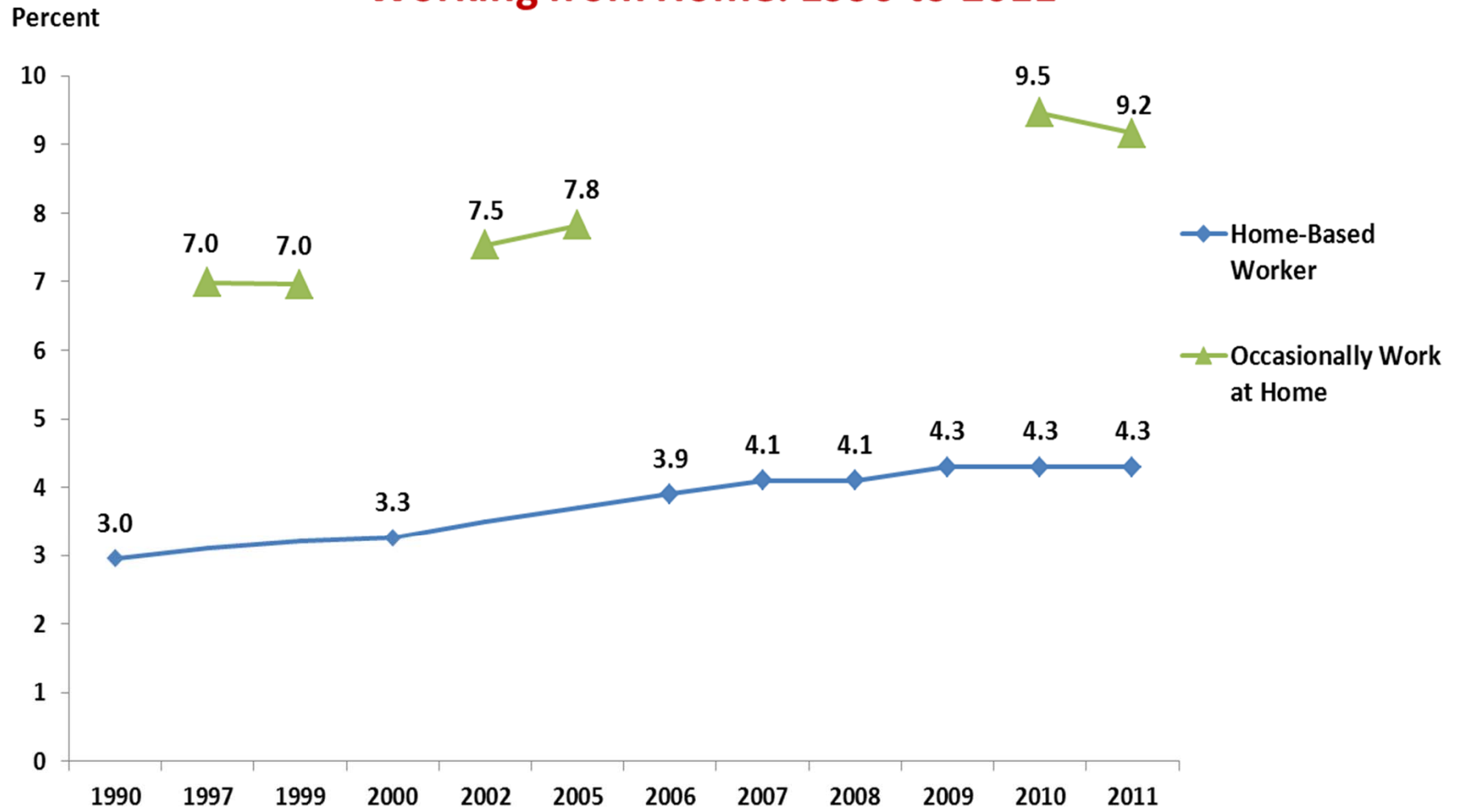
American Community Survey, 2006, 2007, 2008, 2009, 2010, 2011.

Percentage of Workers who Commuted by Public Transportation for Metro Areas: 2011



Source: U.S. Census Bureau, American Community Survey, 2011.

Working from Home: 1990 to 2011



Sources: Decennial Census 1980, 1990, 2000.

American Community Survey, 2006, 2007, 2008, 2009, 2010, 2011.

How People Get to Work - Comparing Cities: 2011

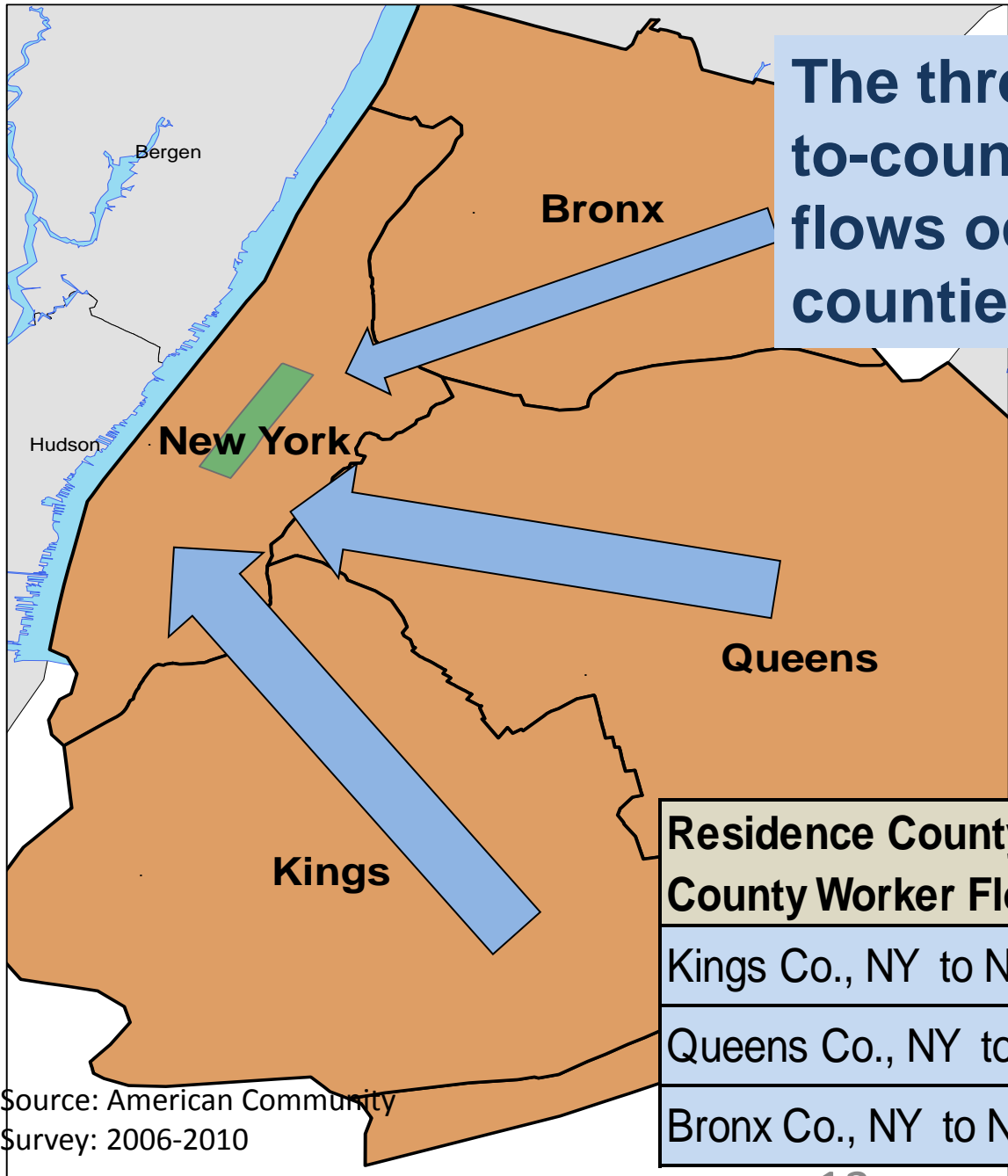
Percent



Percent of Workers in State who Live in a Different State: 2011

State	Percent	Margin of Error (\pm)
District of Columbia	72.4	0.8
Delaware	14.8	0.8
Rhode Island	12.8	0.9
North Dakota	11.6	0.7
New Hampshire	10.8	0.5
West Virginia	10.0	0.5
Maryland	9.1	0.3
Kansas	8.4	0.4
Kentucky	7.8	0.3
New Jersey	7.8	0.2

Source: American Community Survey 2011.



The three largest county-to-county home-to-work flows occurred within counties in New York City

Residence County to Workplace County Worker Flow	Number of Workers
Kings Co., NY to New York Co., NY	391,008
Queens Co., NY to New York Co., NY	370,243
Bronx Co., NY to New York Co., NY	191,620

Source: American Community Survey: 2006-2010