

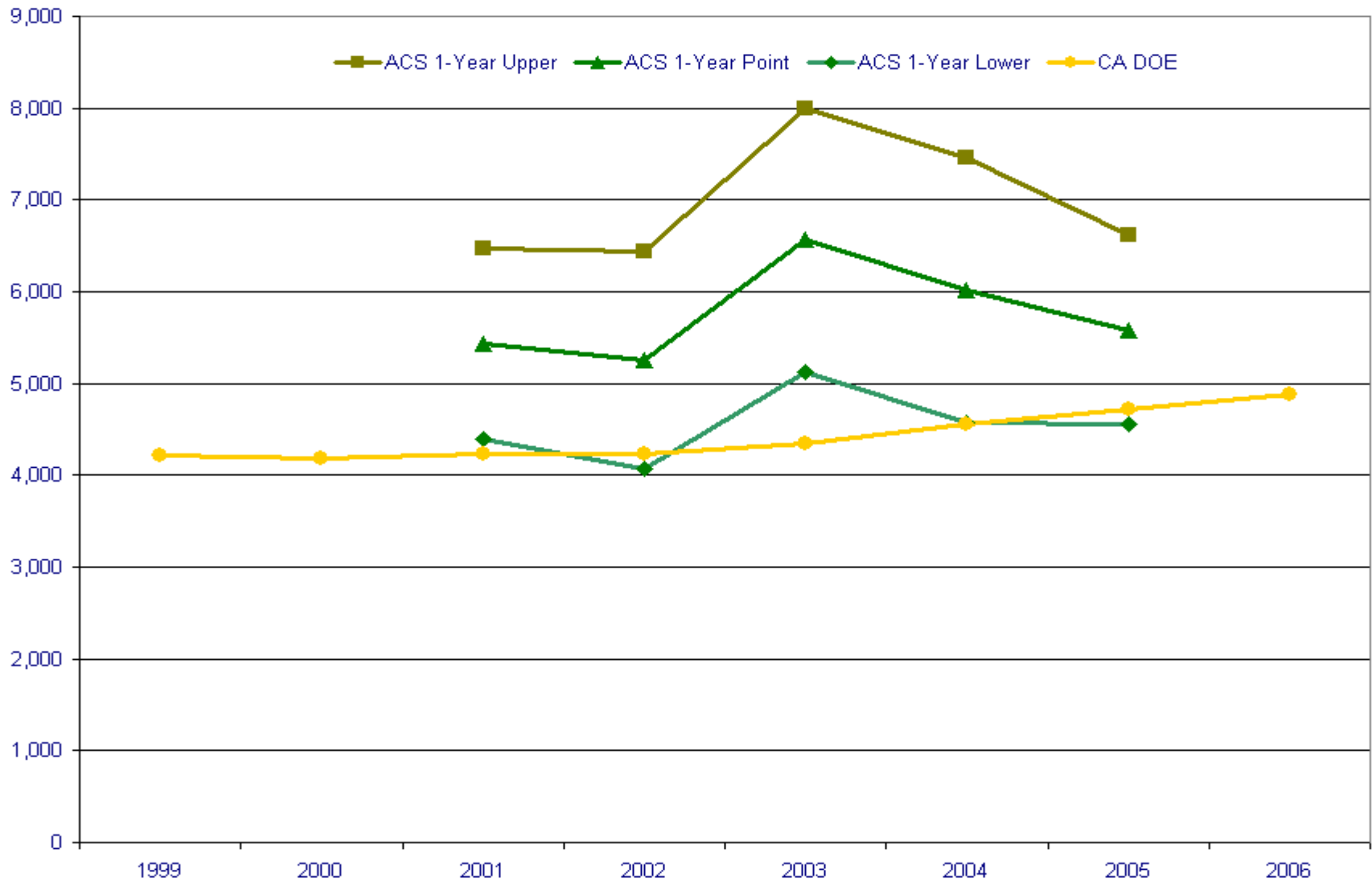
# **Multiple ACS Estimates: Pick a Number, Any Number!**

Linda Gage  
California Department of Finance  
**Multiyear Estimates Study Meeting**  
November 15, 2007

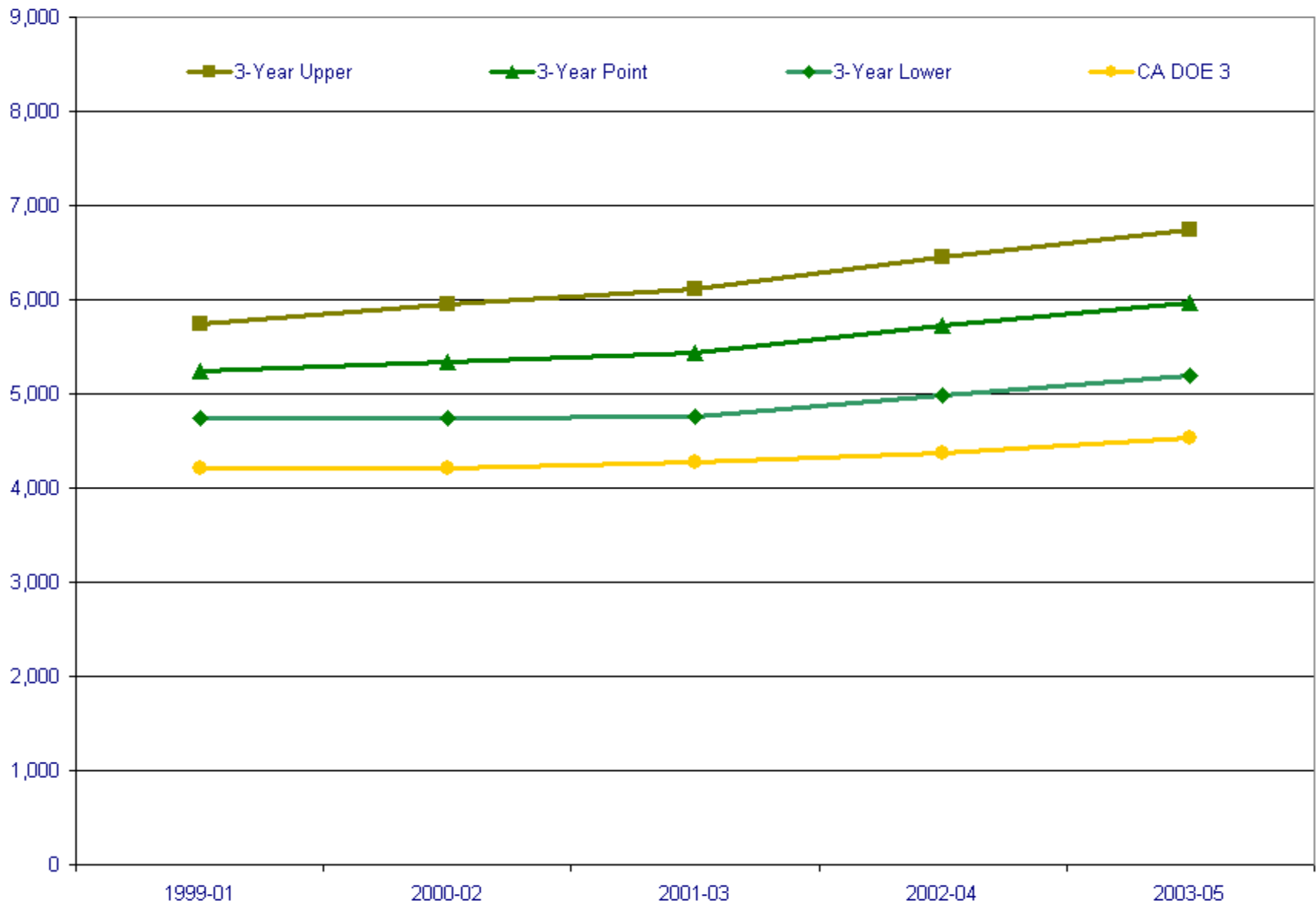
# California School Districts

- Over 1,000 school districts in California
- Over 9,000 individual schools
- Over 6,000,000 students in public schools
- Over 500,000 students in private schools
  
- We'll look at high school enrollments estimated in the ACS and as reported to the California Department of Education by two Tulare County districts.

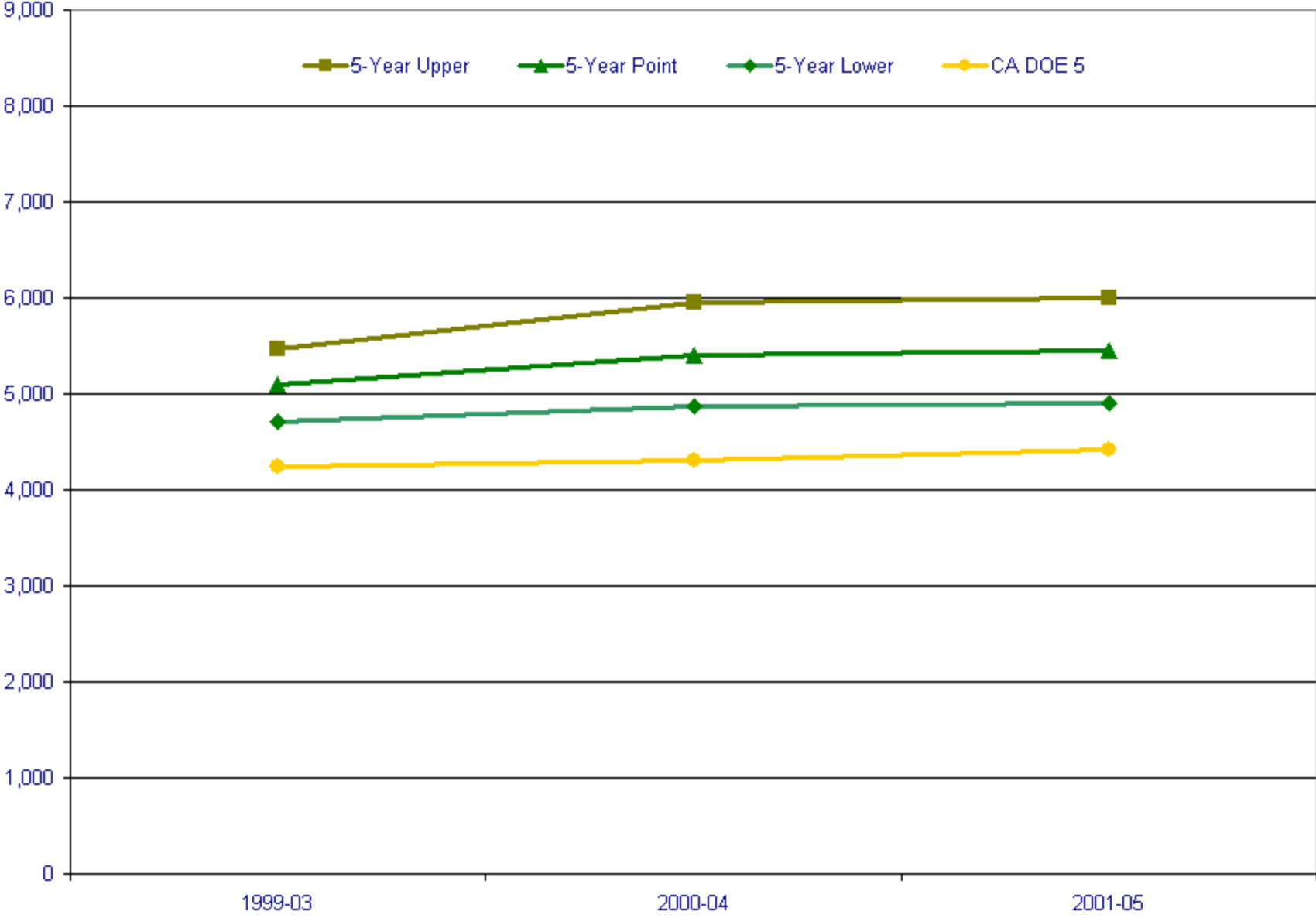
# Tulare HS 1-Year Enrollment



# 3-Year Enrollment Estimates



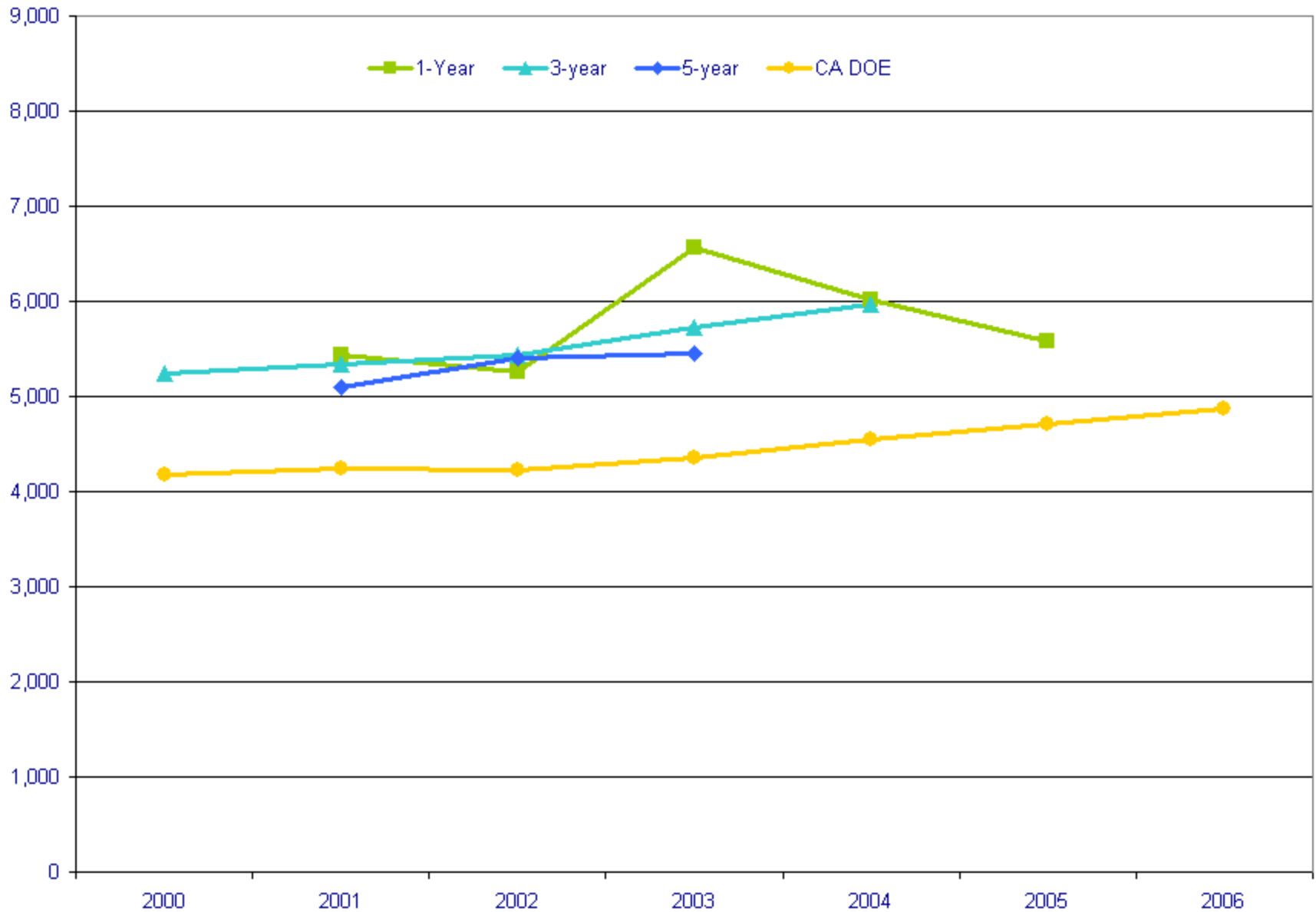
# 5-Year Enrollment Estimates



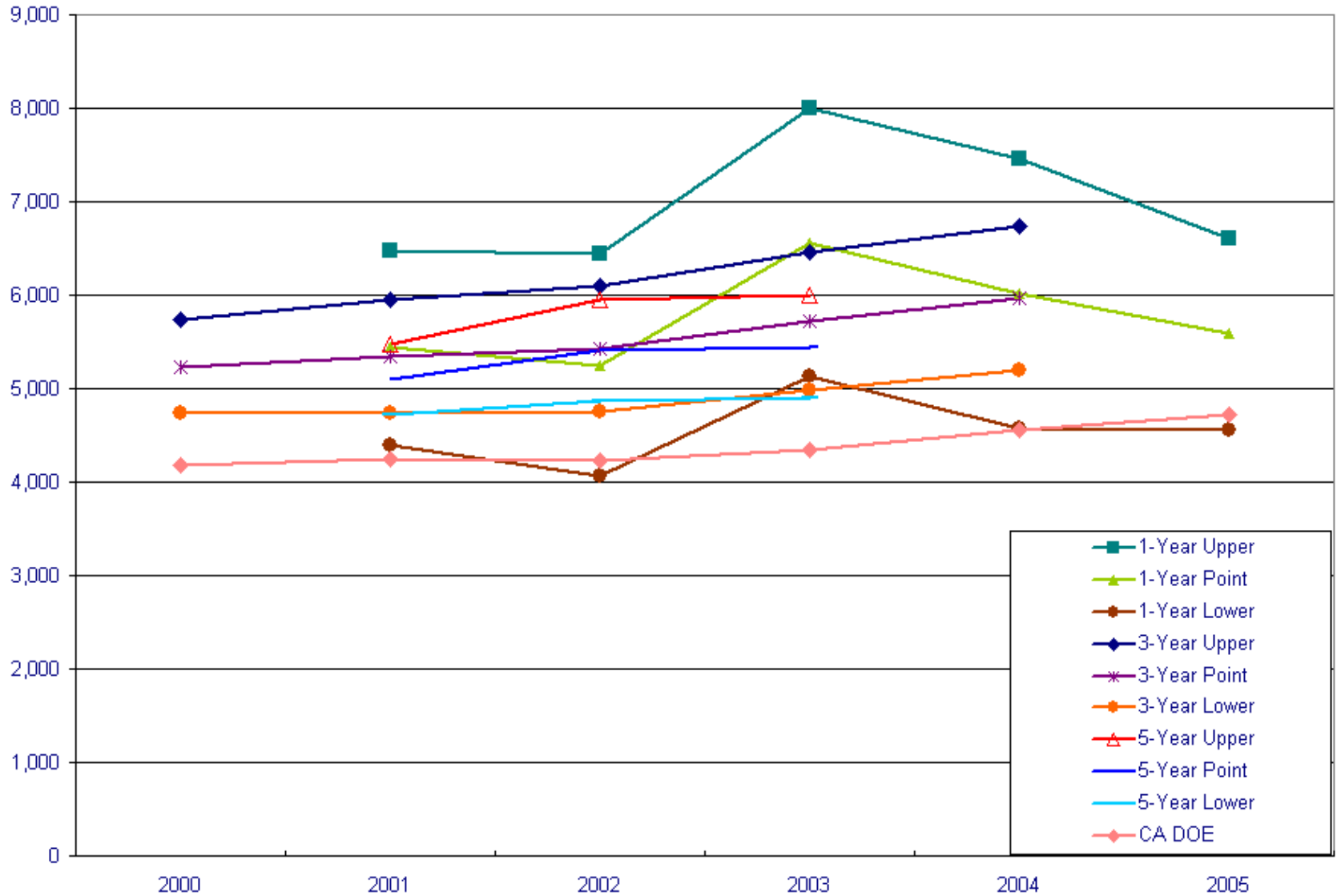
# Tulare High School Enrollment

Tulare County 5-Yr. 2001-2005 Census Tract Estimates: High School Enrollment								
Tulare Joint Union High School District			Visalia Unified School District					
Tract	HS Enr.	+/-	Tract	HS Enr.	+/-	Tract	HS Enr.	+/-
000100	289	+/-88	001601	450	+/-139	002700	392	+/-238
000201	630	+/-207	001602	699	+/-193	002800	197	+/-81
000202	46	+/-42	001701	320	+/-133	002901	275	+/-134
000301	340	+/-118	001703	302	+/-106	002903	362	+/-120
000302	226	+/-86	001704	269	+/-139	002904	356	+/-140
000401	301	+/-112	001800	317	+/-135	003001	439	+/-171
000402	385	+/-86	001901	207	+/-78	003002	246	+/-101
000501	582	+/-173	001902	371	+/-146	003100	284	+/-103
000502	282	+/-110	002002	193	+/-85	003200	410	+/-133
000600	675	+/-227	002003	366	+/-124	003300	592	+/-219
000701	410	+/-167	002004	227	+/-100	003400	410	+/-106
000702	535	+/-155	002006	213	+/-91	003500	1,022	+/-213
000800	758	+/-218	002007	397	+/-195	003601	677	+/-211
000900	357	+/-115	002008	70	+/-41	003602	412	+/-167
001003	575	+/-152	002009	299	+/-132	003700	301	+/-112
001004	743	+/-217	002100	195	+/-80	003801	153	+/-72
001005	94	+/-53	002201	865	+/-236	003802	205	+/-132
001006	273	+/-121	002202	465	+/-206	003901	551	+/-172
001100	595	+/-204	002302	346	+/-117	003902	671	+/-180
001200	61	+/-58	002303	423	+/-140	004101	620	+/-192
001301	537	+/-164	002304	176	+/-112	004200	552	+/-171
001302	463	+/-156	002400	415	+/-110	004300	511	+/-142
001400	344	+/-134	002500	283	+/-135	004400	540	+/-166
001501	240	+/-109	002601	482	+/-188	004500	647	+/-164
001502	496	+/-188	002602	381	+/-114			

# Multi-Year Enrollment Estimates

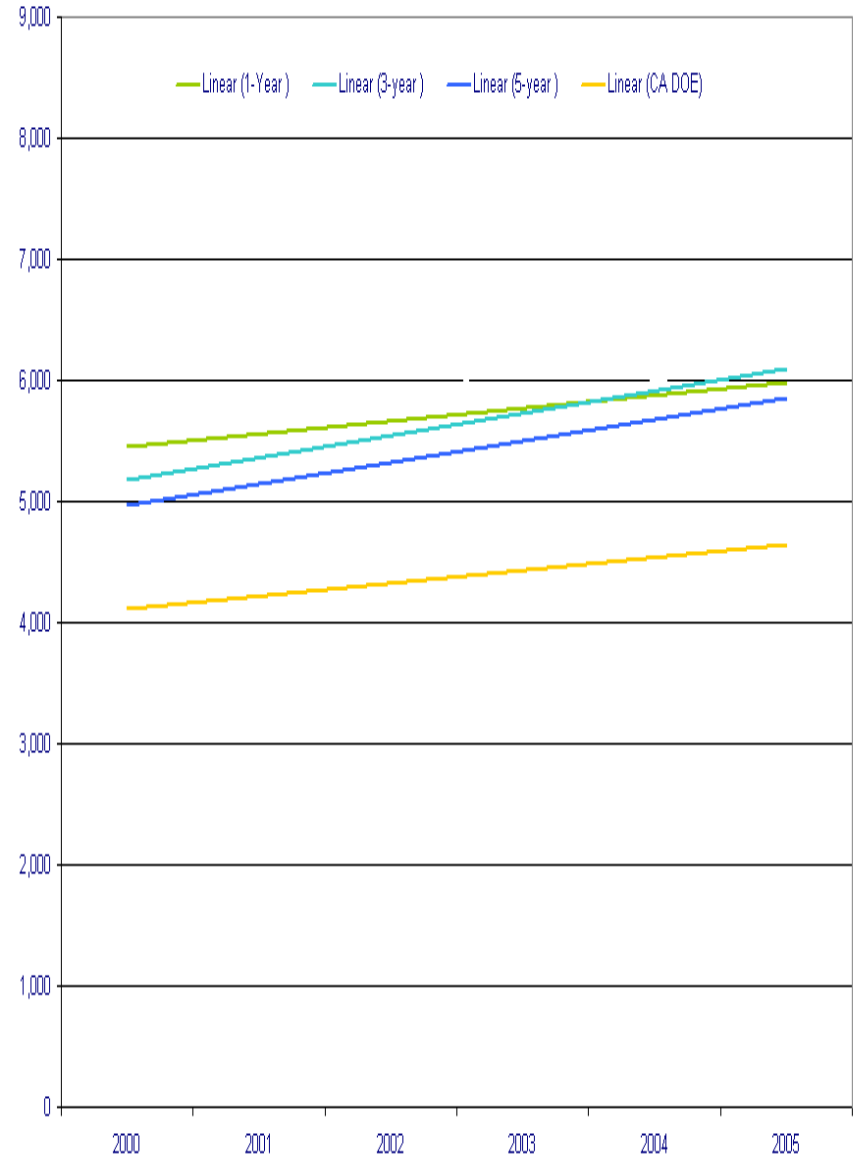
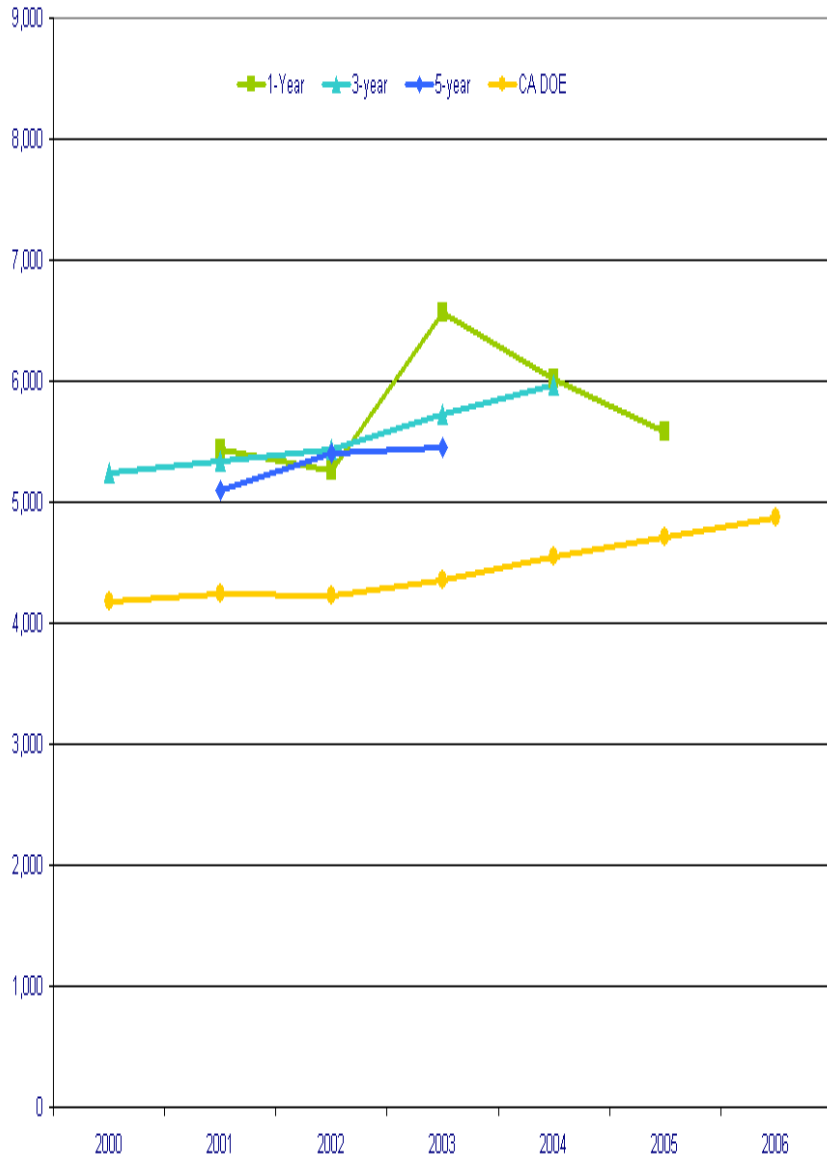


# Pick a Number, Any Number





# Enrollment Trends by Series



# Comparing Multi-Year Estimates

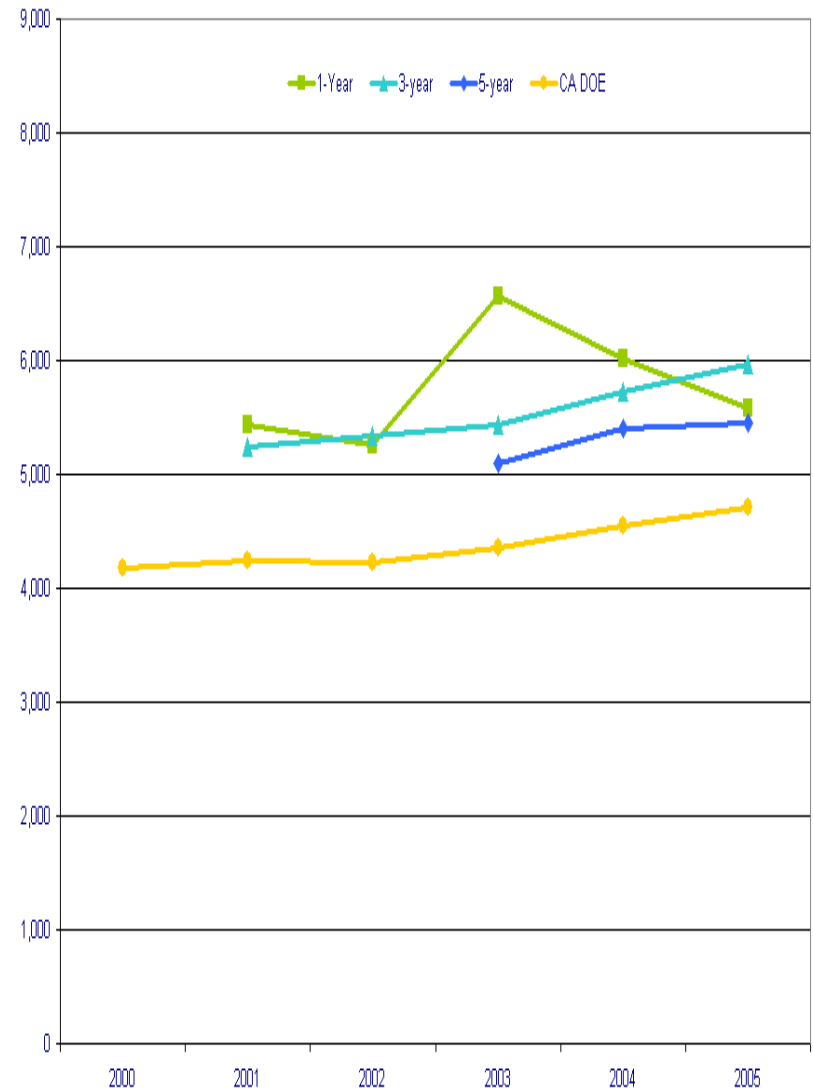
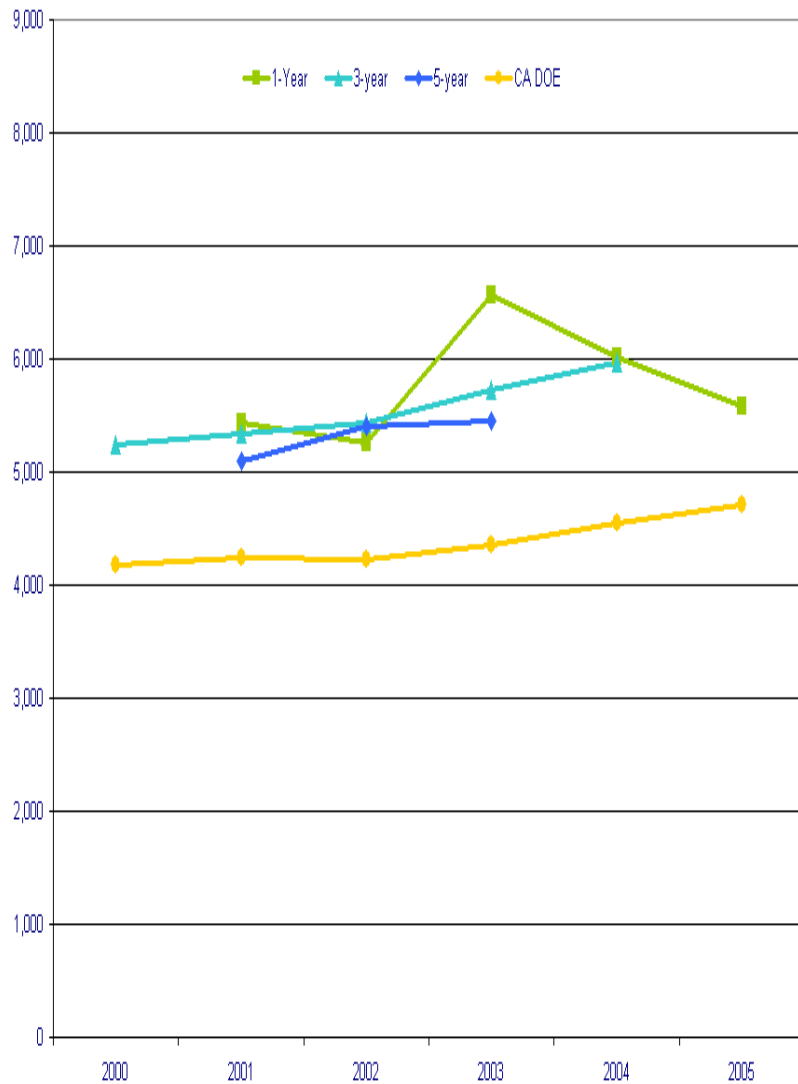
## Mid-Point Reference Period Comparisons

1-year	1999	2000	2001	2002	2003	2004	2005
3-year		1999-01	2000-02	2001-03	2002-04	2003-05	
5-year			1999-03	2000-04	2001-05		

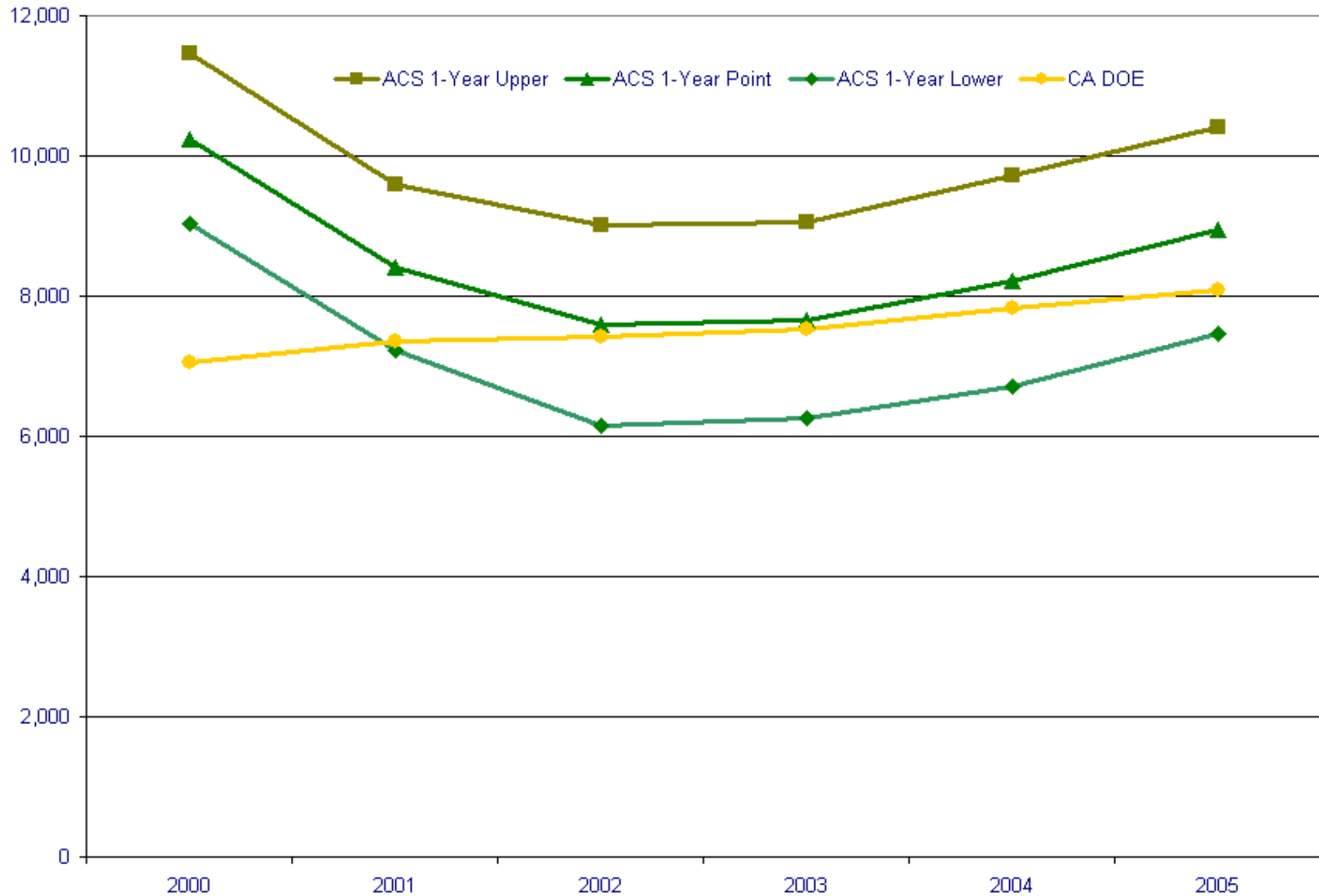
## End-Point Reference Period Comparisons

1-year	1999	2000	2001	2002	2003	2004	2005
3-year			1999-01	2000-02	2001-03	2002-04	2003-05
5-year					1999-03	2000-04	2001-05

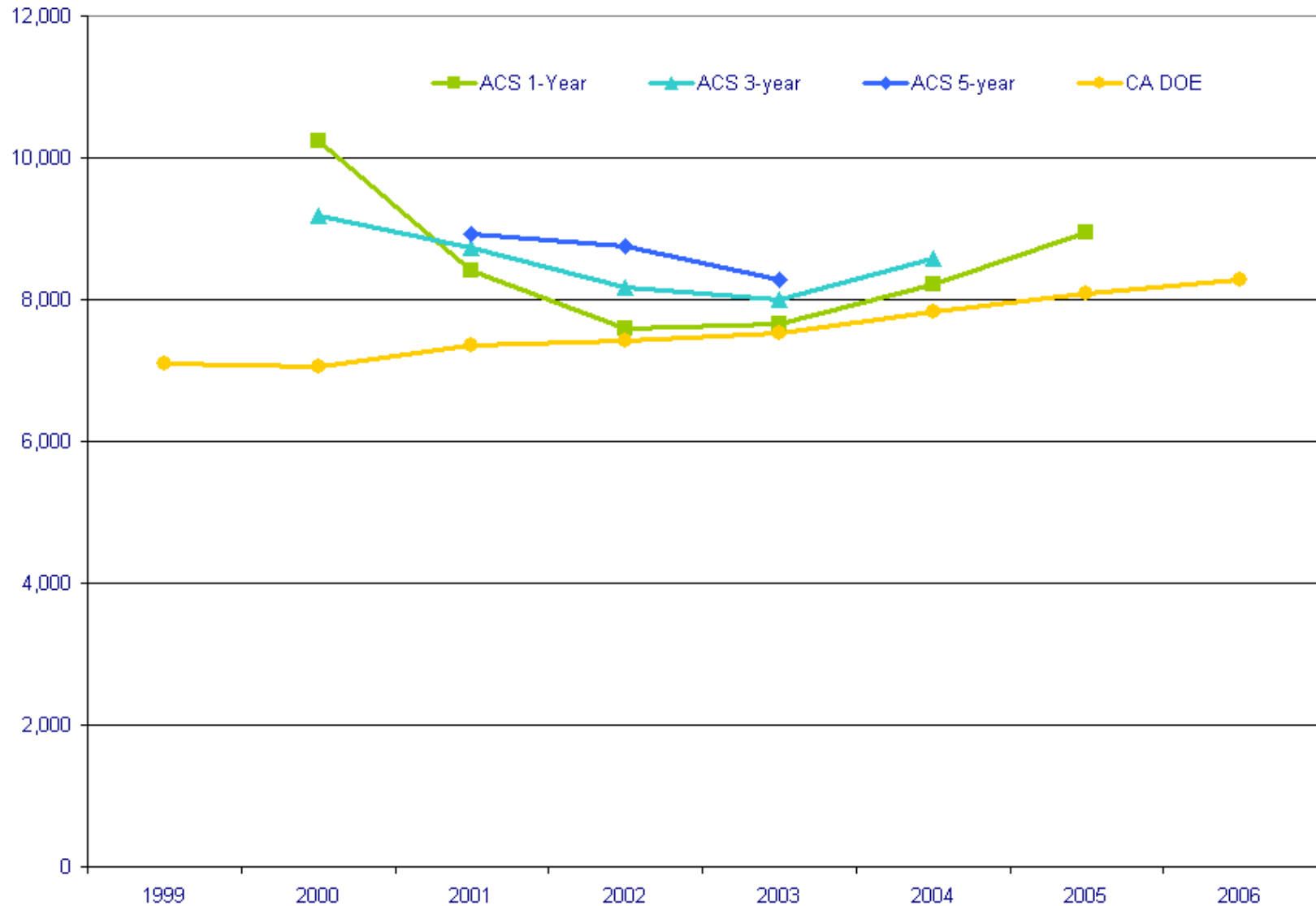
# Comparing Multi-Year Estimates



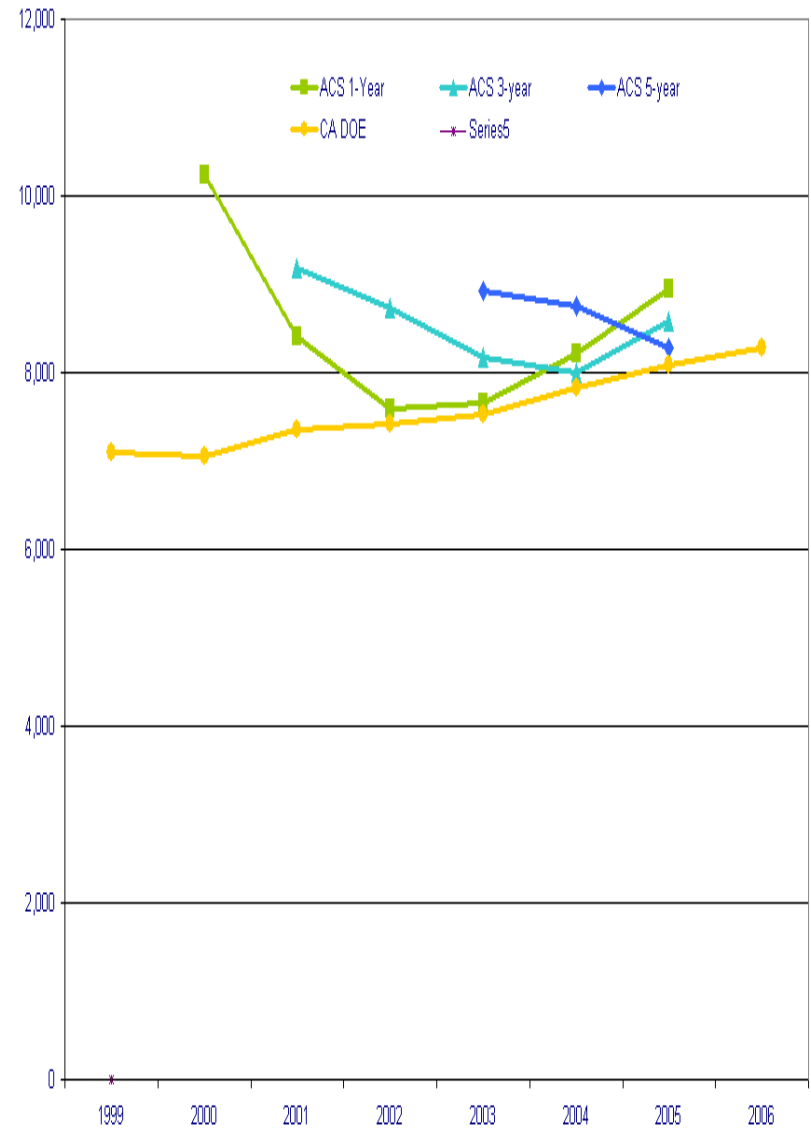
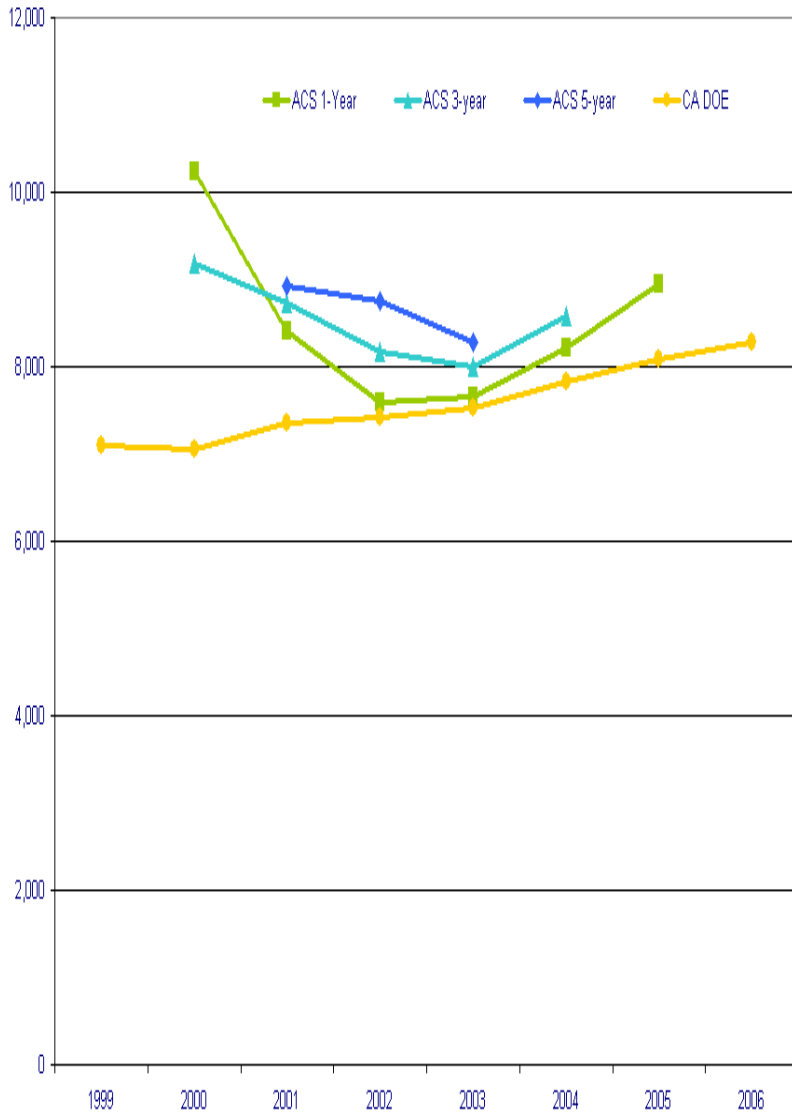
# Visalia High School Enrollment



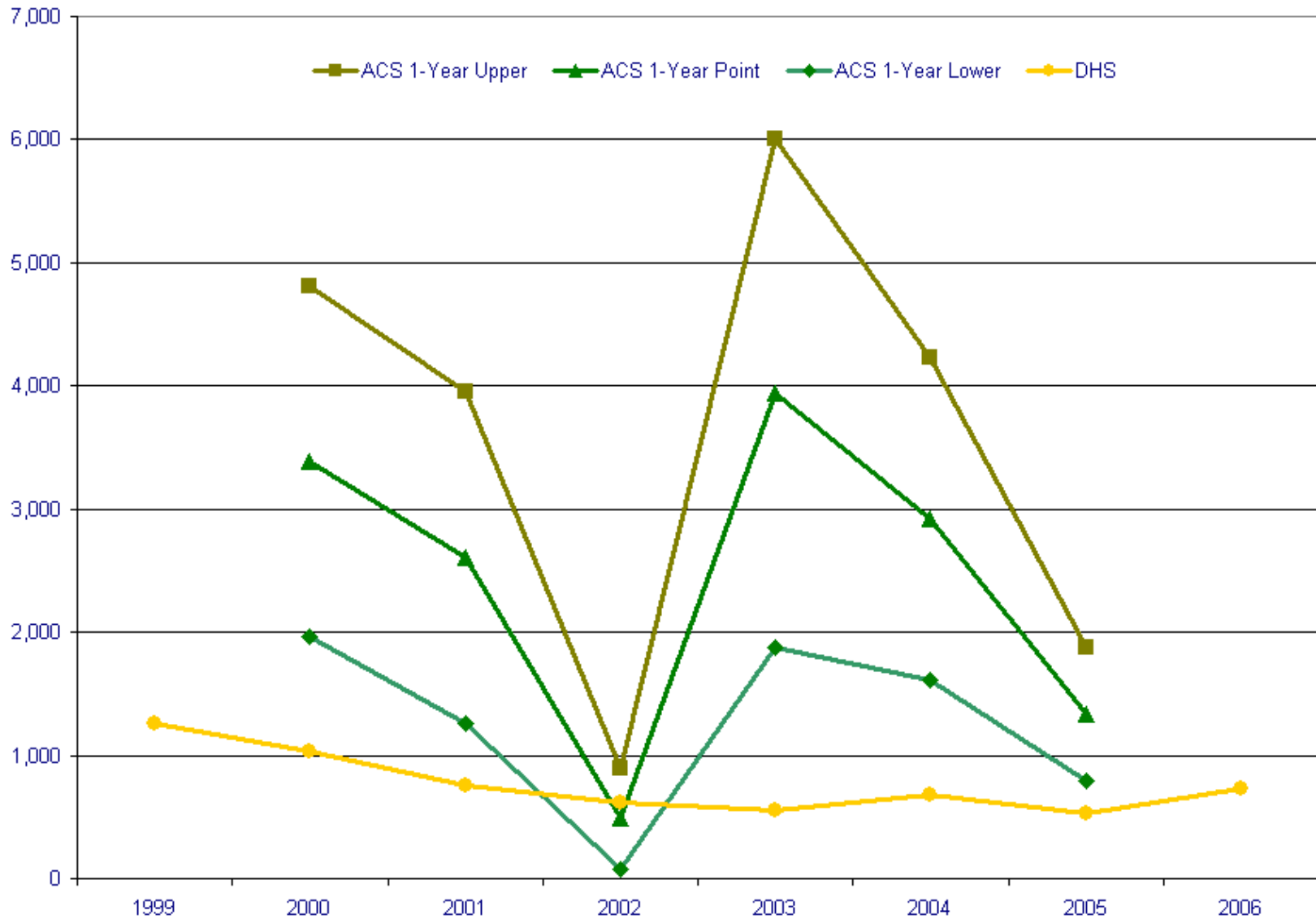
# Visalia HS Multi-Year Estimates



# Multi-Year Estimates Reference Year



# Residence Abroad 1 Year Ago

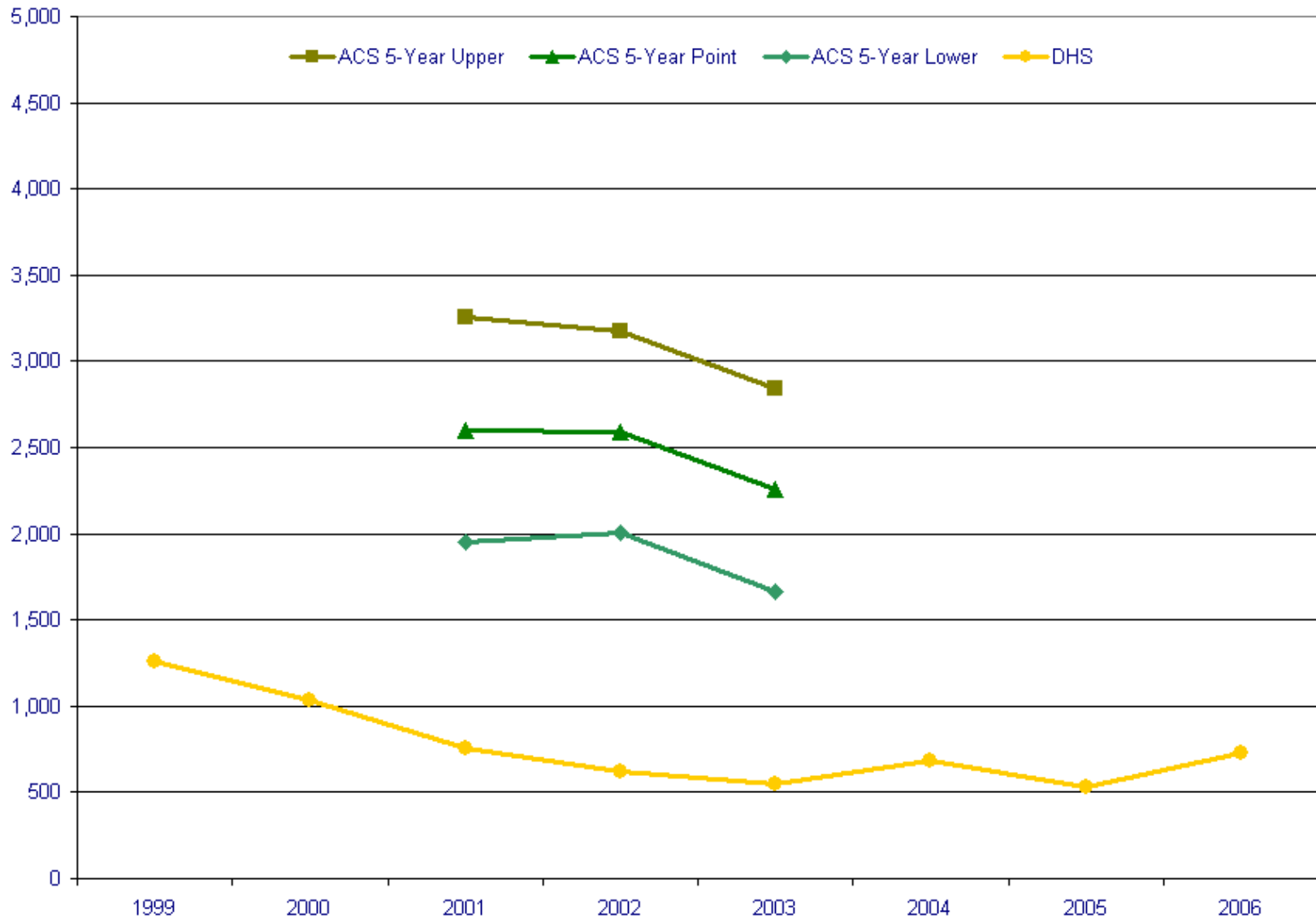


# Residence Abroad 1 Year Ago

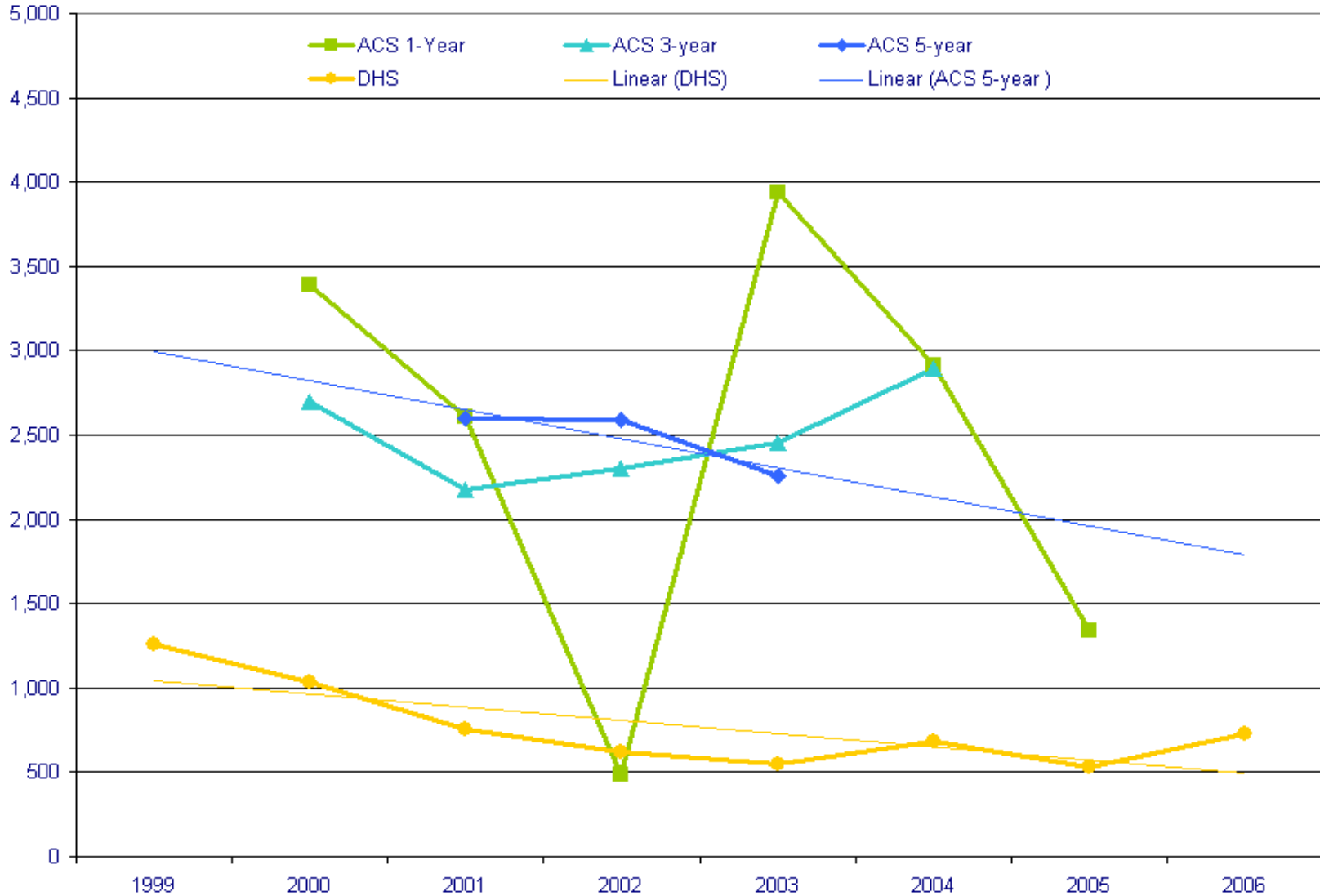




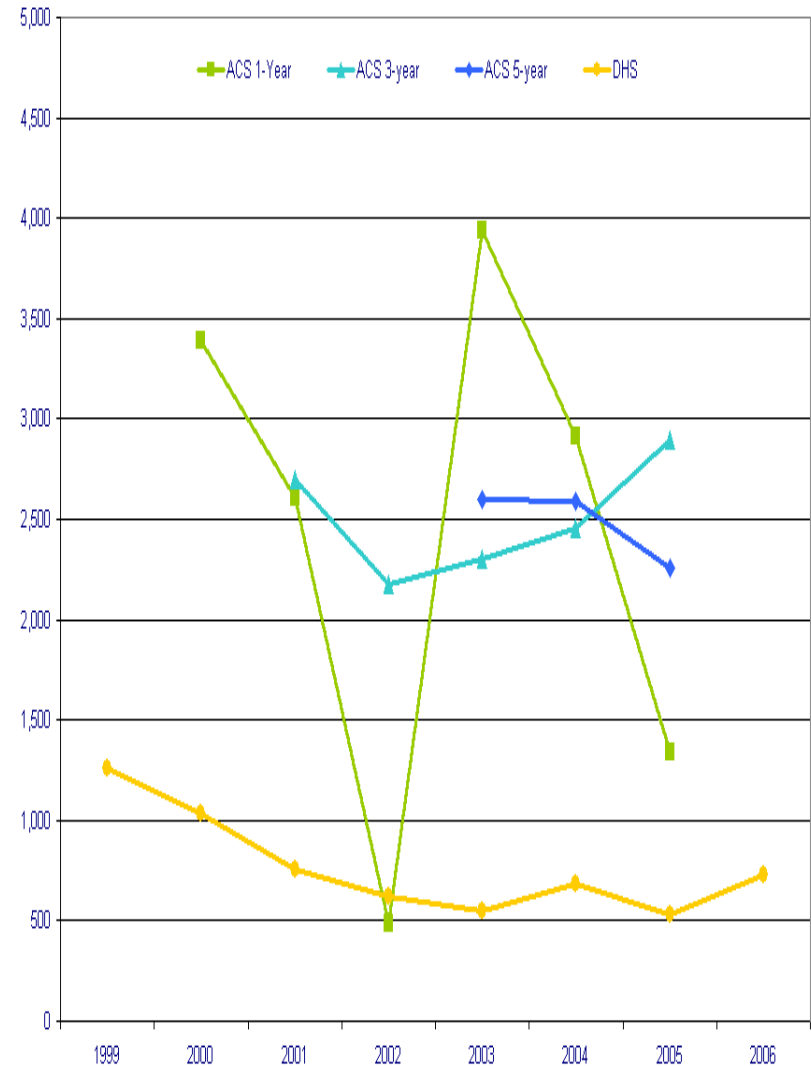
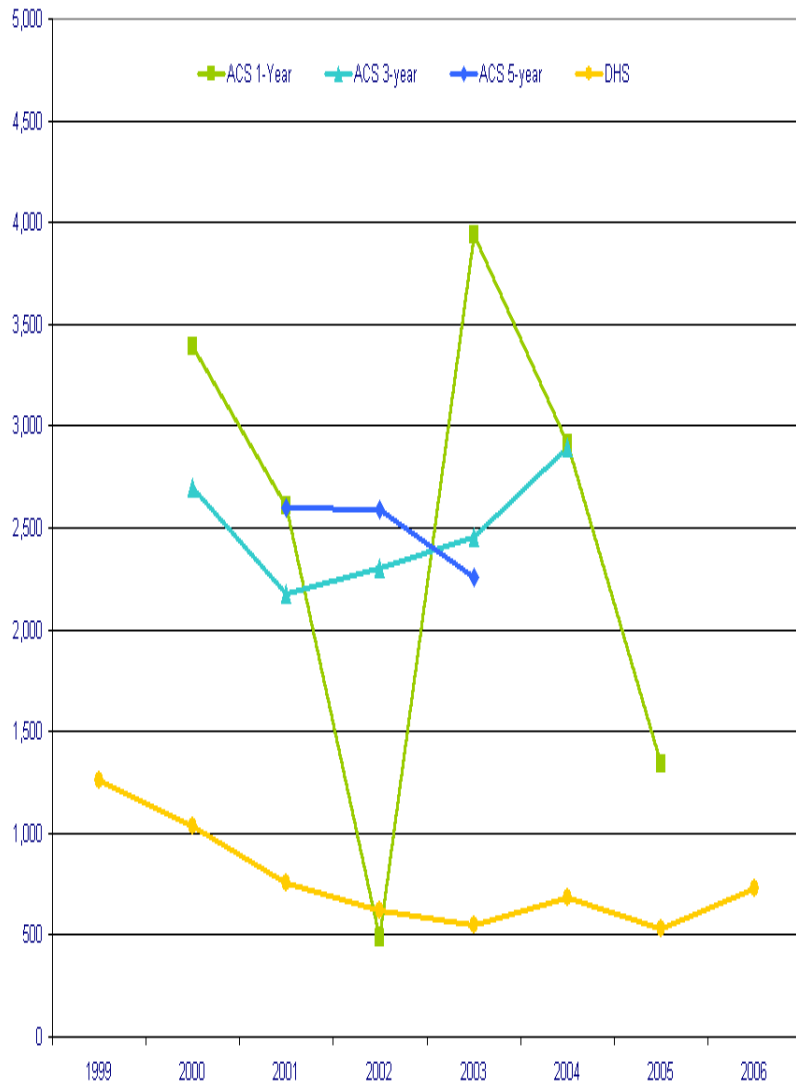
# Residence Abroad 1 Year Ago



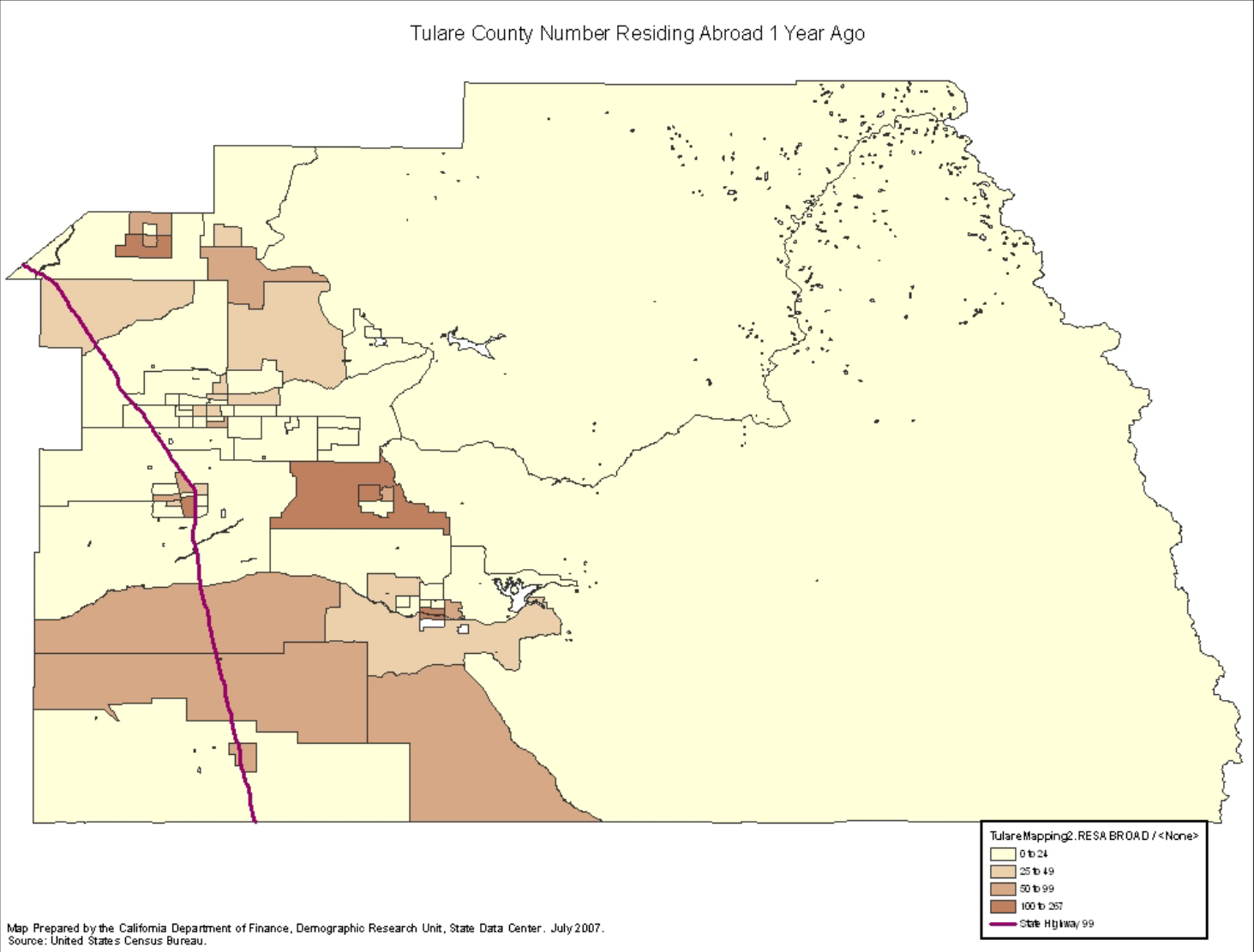
# Residence Abroad 1 Year Ago



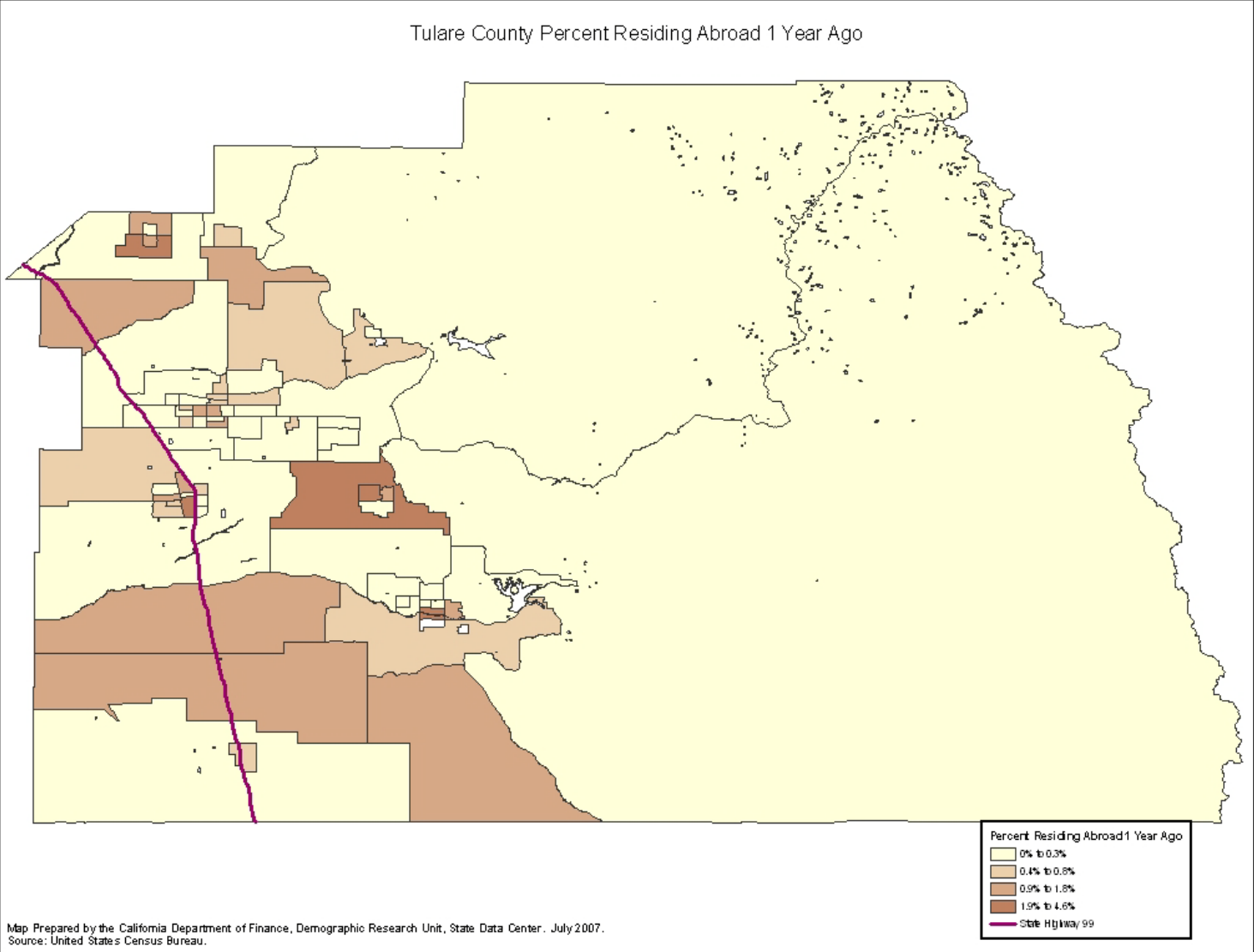
# Comparing Multi-Year Estimates



# Residence Abroad 1 Year Ago



# Residence Abroad 1 Year Ago



# ACS 5-Yr. Residence Abroad

<b>Tract</b>	<b>Abroad</b>	<b>Tract</b>	<b>Abroad</b>	<b>Tract</b>	<b>Abroad</b>
000100	13	001601	16	002700	0
000201	37	001602	0	002800	0
000202	0	001701	0	002901	113
000301	4	001703	0	002903	10
000302	34	001704	0	002904	9
000401	74	001800	49	003001	39
000402	0	001901	0	003002	16
000501	84	001902	62	003100	0
000502	137	002002	47	003200	53
000600	57	002003	0	003300	6
000701	12	002004	22	003400	35
000702	0	002006	10	003500	27
000800	27	002007	8	003601	0
000900	0	002008	9	003602	0
001003	5	002009	0	003700	0
001004	35	002100	15	003801	0
001005	0	002201	9	003802	4
001006	12	002202	78	003901	91
001100	41	002302	31	003902	10
001200	9	002303	61	004101	267
001301	0	002304	0	004200	51
001302	31	002400	0	004300	10
001400	0	002500	147	004400	54
001501	8	002601	112	004500	66
001502	0	002602	71		

# ACS 5-Yr. Residence Abroad

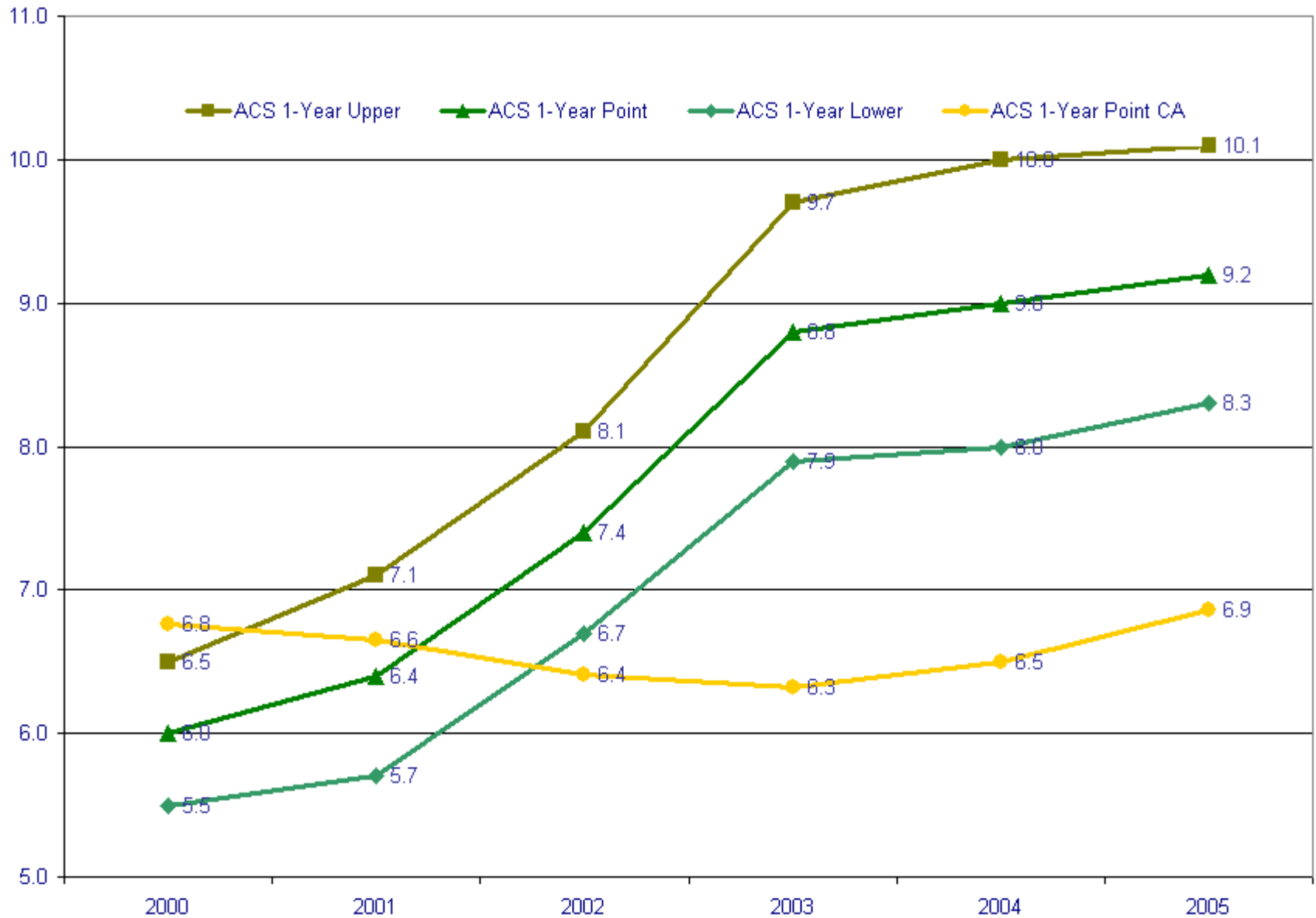
Tract	Abroad	+/-	Tract	Abroad	+/-	Tract	Abroad	+/-
000100	13	+/-20	001601	16	+/-26	002700	0	+/-119
000201	37	+/-62	001602	0	+/-119	002800	0	+/-119
000202	0	+/-119	001701	0	+/-119	002901	113	+/-180
000301	4	+/-8	001703	0	+/-119	002903	10	+/-17
000302	34	+/-36	001704	0	+/-119	002904	9	+/-15
000401	74	+/-70	001800	49	+/-53	003001	39	+/-62
000402	0	+/-119	001901	0	+/-119	003002	16	+/-23
000501	84	+/-90	001902	62	+/-88	003100	0	+/-119
000502	137	+/-232	002002	47	+/-81	003200	53	+/-63
000600	57	+/-51	002003	0	+/-119	003300	6	+/-10
000701	12	+/-23	002004	22	+/-39	003400	35	+/-42
000702	0	+/-119	002006	10	+/-17	003500	27	+/-32
000800	27	+/-48	002007	8	+/-14	003601	0	+/-119
000900	0	+/-119	002008	9	+/-14	003602	0	+/-119
001003	5	+/-10	002009	0	+/-119	003700	0	+/-119
001004	35	+/-27	002100	15	+/-16	003801	0	+/-119
001005	0	+/-119	002201	9	+/-17	003802	4	+/-8
001006	12	+/-21	002202	78	+/-75	003901	91	+/-133
001100	41	+/-52	002302	31	+/-37	003902	10	+/-16
001200	9	+/-16	002303	61	+/-99	004101	267	+/-308
001301	0	+/-119	002304	0	+/-119	004200	51	+/-47
001302	31	+/-52	002400	0	+/-119	004300	10	+/-12
001400	0	+/-119	002500	147	+/-188	004400	54	+/-62
001501	8	+/-14	002601	112	+/-168	004500	66	+/-45
001502	0	+/-119	002602	71	+/-116			

# ACS 5-Yr. Residence Abroad

<b>Tract</b>	<b>Abroad</b>	<b>Tract</b>	<b>Abroad</b>	<b>Tract</b>	<b>Abroad</b>
000100	-7 to 33	001601	-10 to 42	002700	-119 to 119
000201	-25 to 99	001602	-119 to 119	002800	-119 to 119
000202	-119 to 119	001701	-119 to 119	002901	-67 to 293
000301	-4 to 12	001703	-119 to 119	002903	-7 to 27
000302	-2 to 70	001704	-119 to 119	002904	-6 to 24
000401	4 to 144	001800	-4 to 102	003001	-23 to 101
000402	-119 to 119	001901	-119 to 119	003002	-7 to 39
000501	-6 to 174	001902	-26 to 150	003100	-119 to 119
000502	-95 to 369	002002	-34 to 128	003200	-10 to 116
000600	6 to 108	002003	-119 to 119	003300	-4 to 16
000701	-11 to 35	002004	-17 to 61	003400	-7 to 77
000702	-119 to 119	002006	-7 to 27	003500	-5 to 59
000800	-21 to 75	002007	-6 to 22	003601	-119 to 119
000900	-119 to 119	002008	-5 to 23	003602	-119 to 119
001003	-5 to 15	002009	-119 to 119	003700	-119 to 119
001004	8 to 62	002100	-1 to 31	003801	-119 to 119
001005	-119 to 119	002201	-8 to 26	003802	-4 to 12
001006	-9 to 33	002202	3 to 153	003901	-42 to 224
001100	-11 to 93	002302	-6 to 68	003902	-6 to 26
001200	-7 to 25	002303	-38 to 160	004101	-41 to 575
001301	-119 to 119	002304	-119 to 119	004200	4 to 98
001302	-21 to 83	002400	-119 to 119	004300	-2 to 22
001400	-119 to 119	002500	-41 to 335	004400	-8 to 116
001501	-6 to 22	002601	-56 to 280	004500	21 to 111
001502	-119 to 119	002602	-45 to 187		

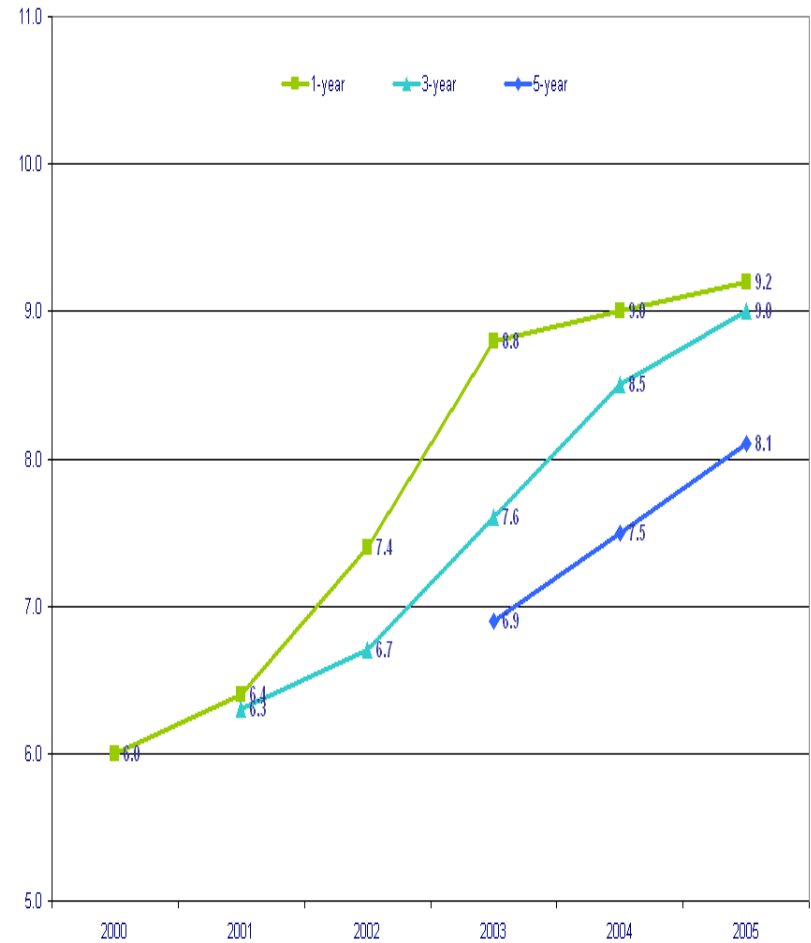
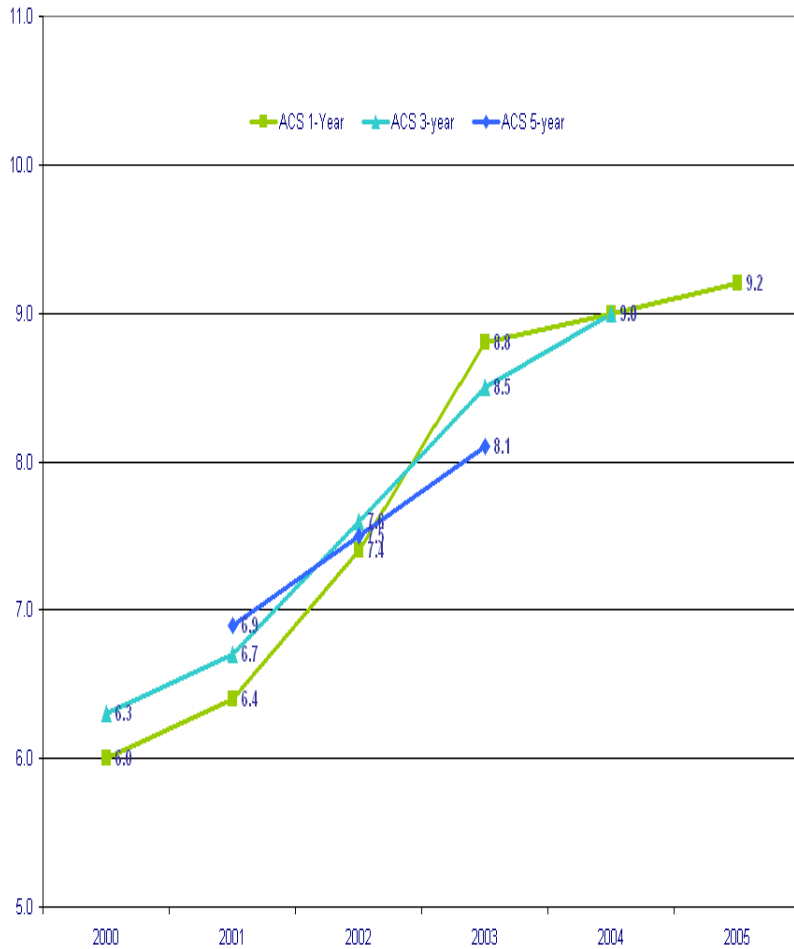


# SF and CA 1-Year Vacancy Rates



# SF ACS Vacancy Rates

mid-year end year

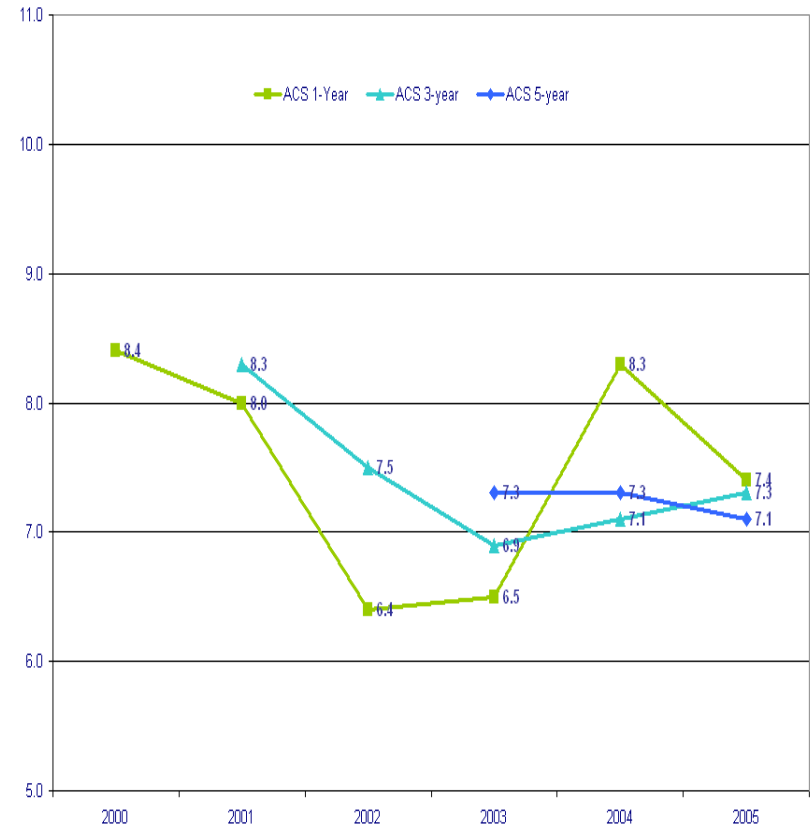
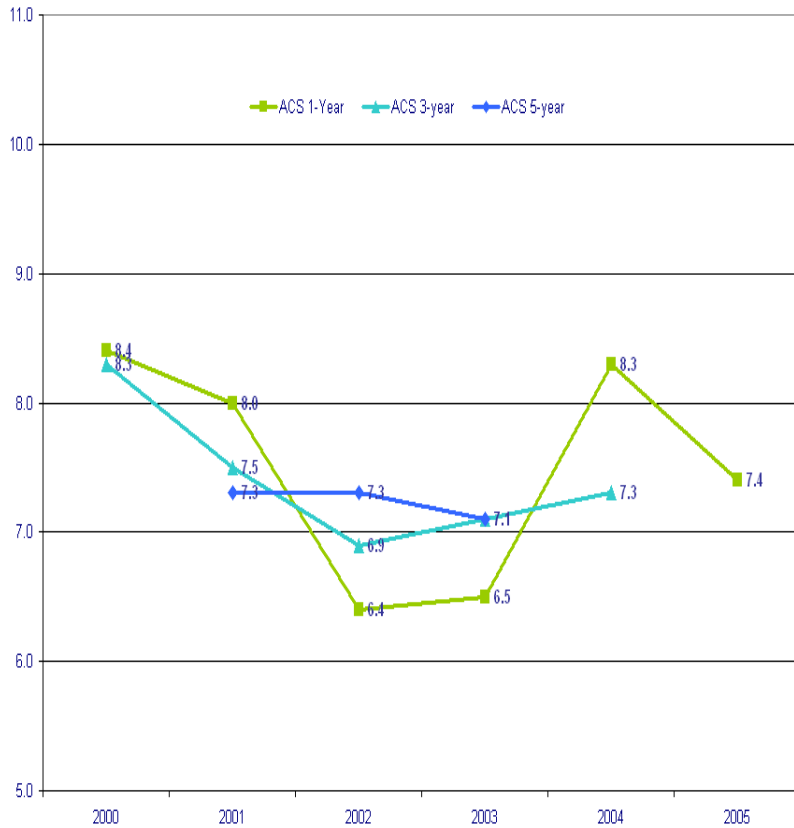


# Tulare and CA 1-Year Vacancy Rates

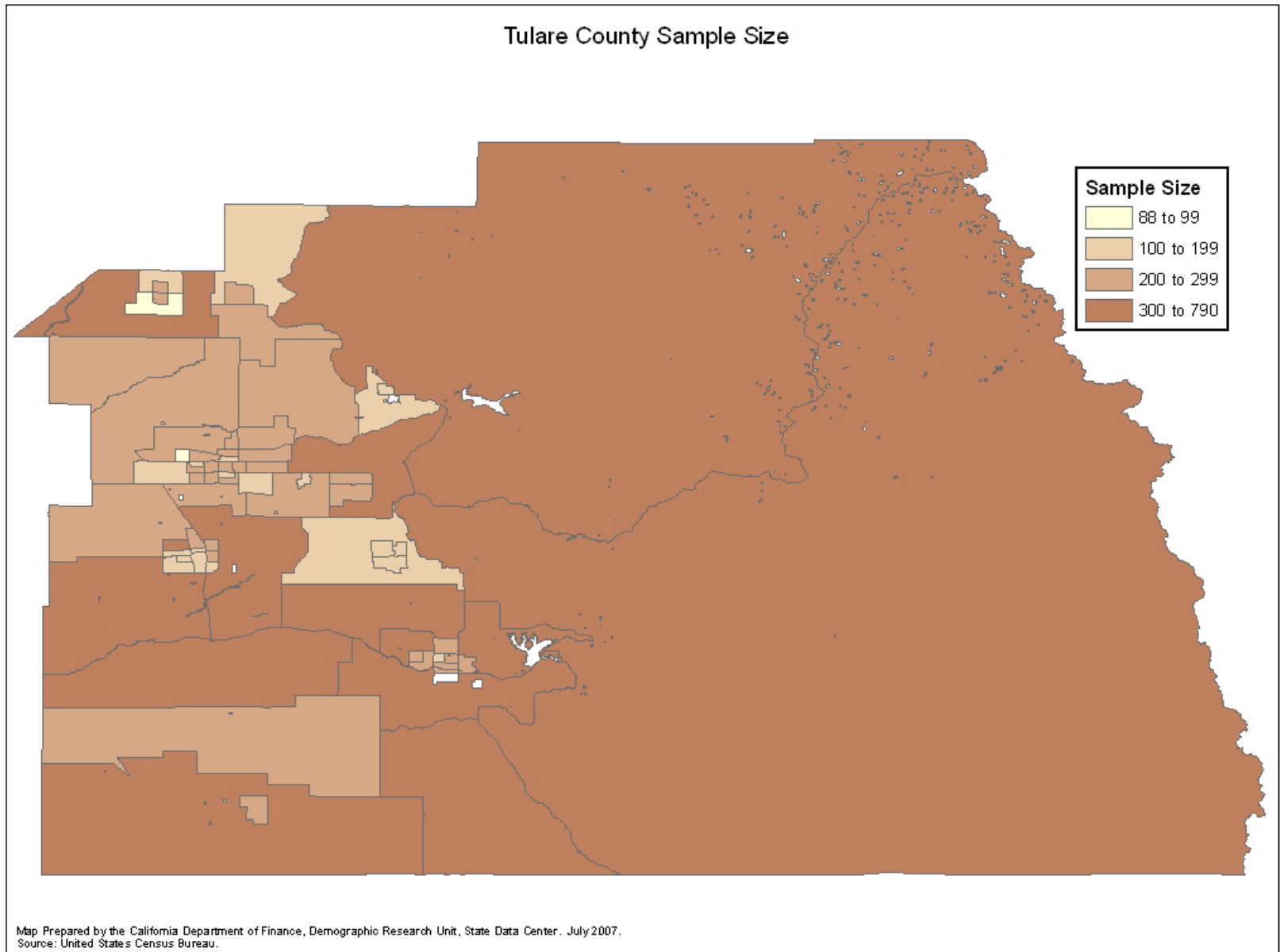


# Tulare ACS Vacancy Rates

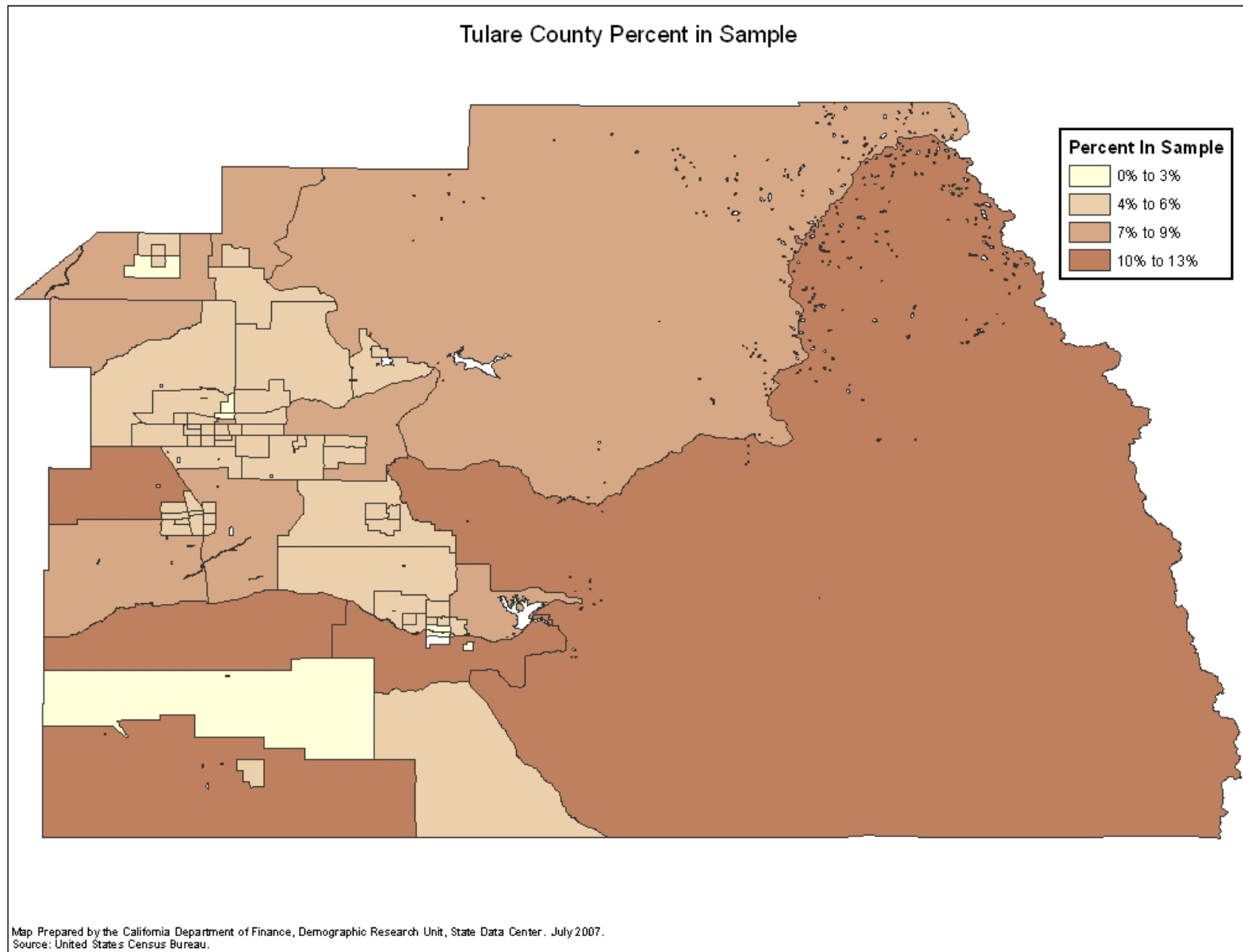
## mid year



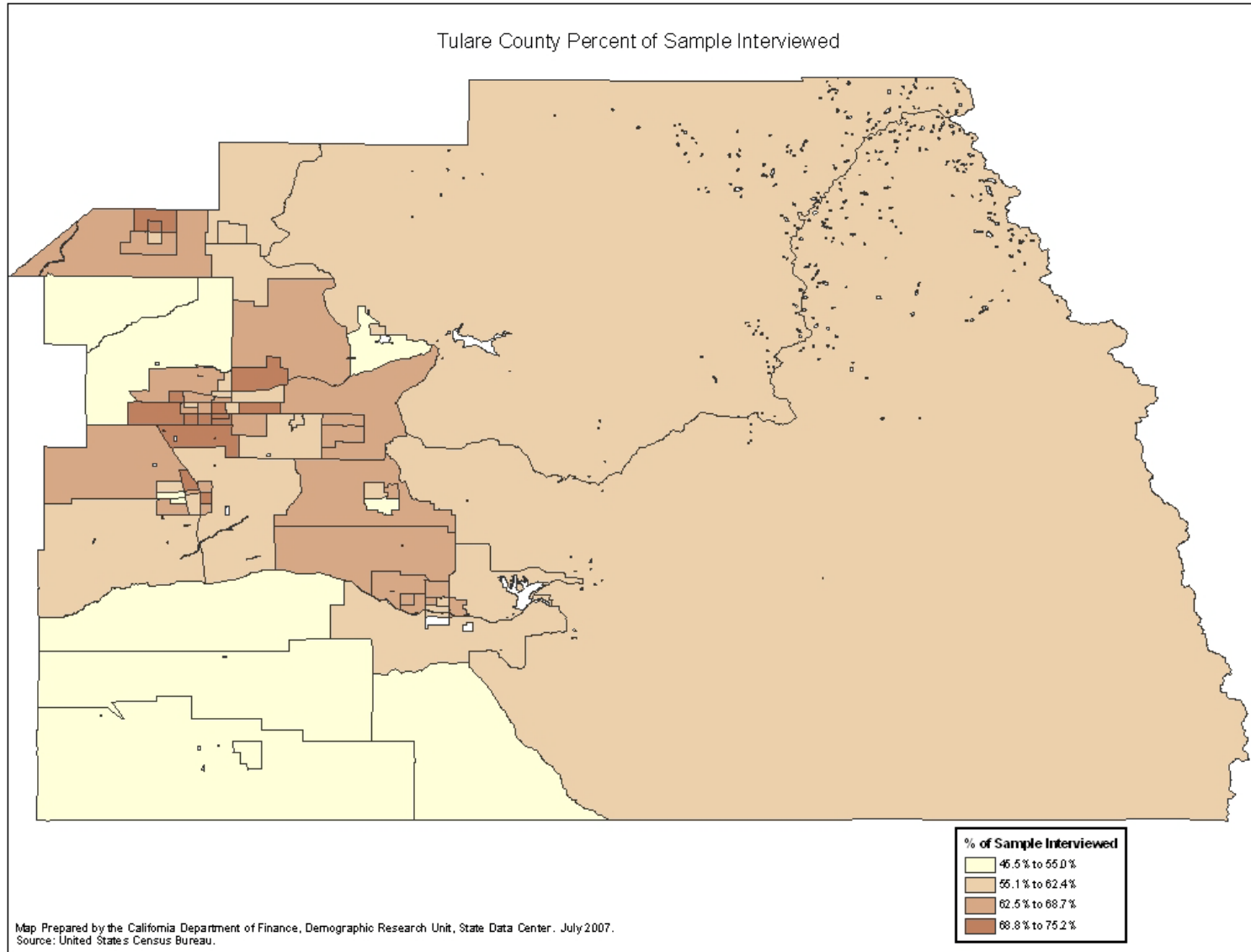
# ACS Tulare Sample Size



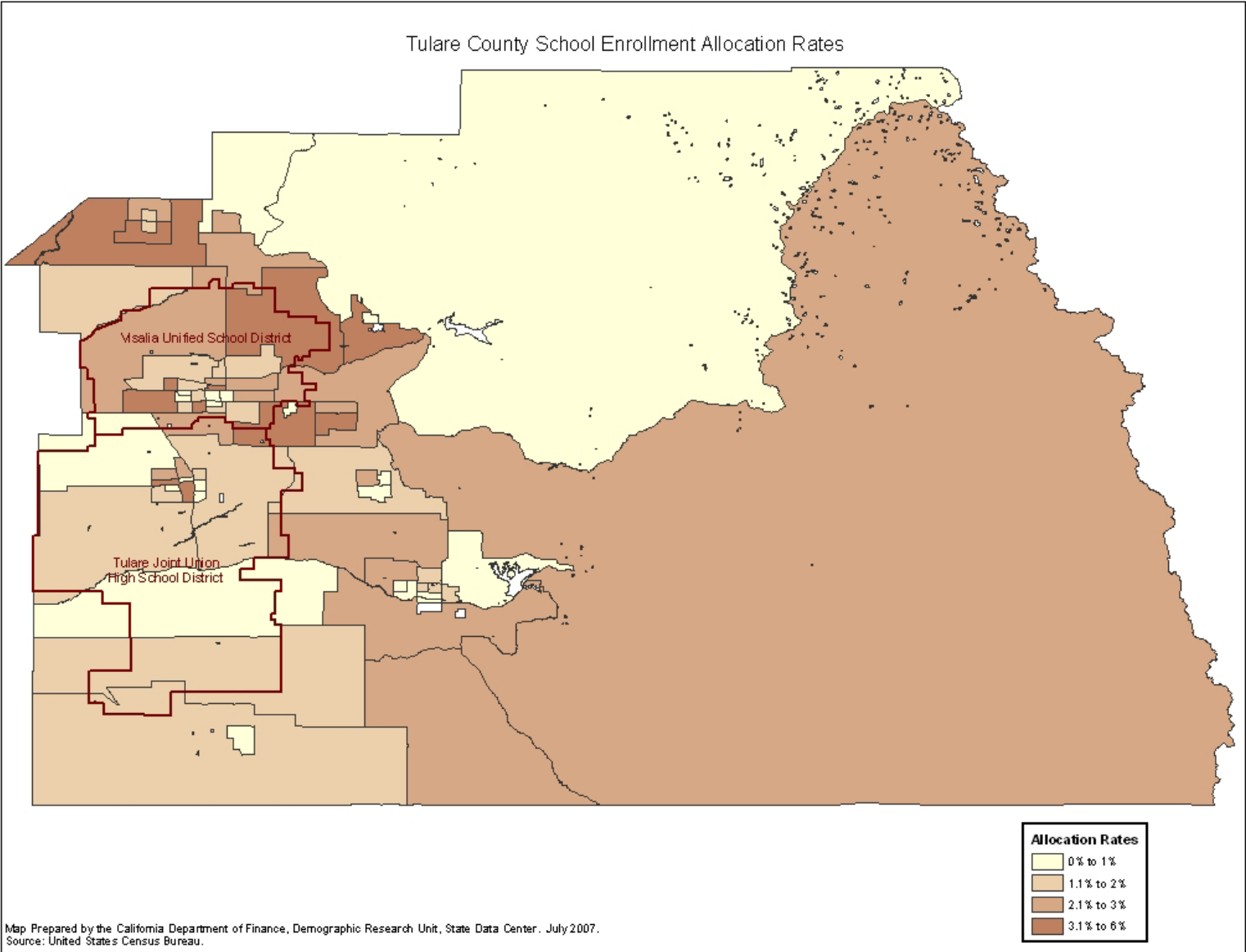
# ACS Tulare Percent in Sample



# Tulare Tract % Final Interviews



# Enrollment Allocation Rates





# Continuing ACS Issues

- Evaluation of the addition of the group quarters population to the ACS data.
- Improvement of the Bureau's intercensal population and housing estimates.
- Maintenance of sufficient sample size.
- Assistance to data users in using the ACS.
- Continued development of effective and efficient ACS data dissemination.

