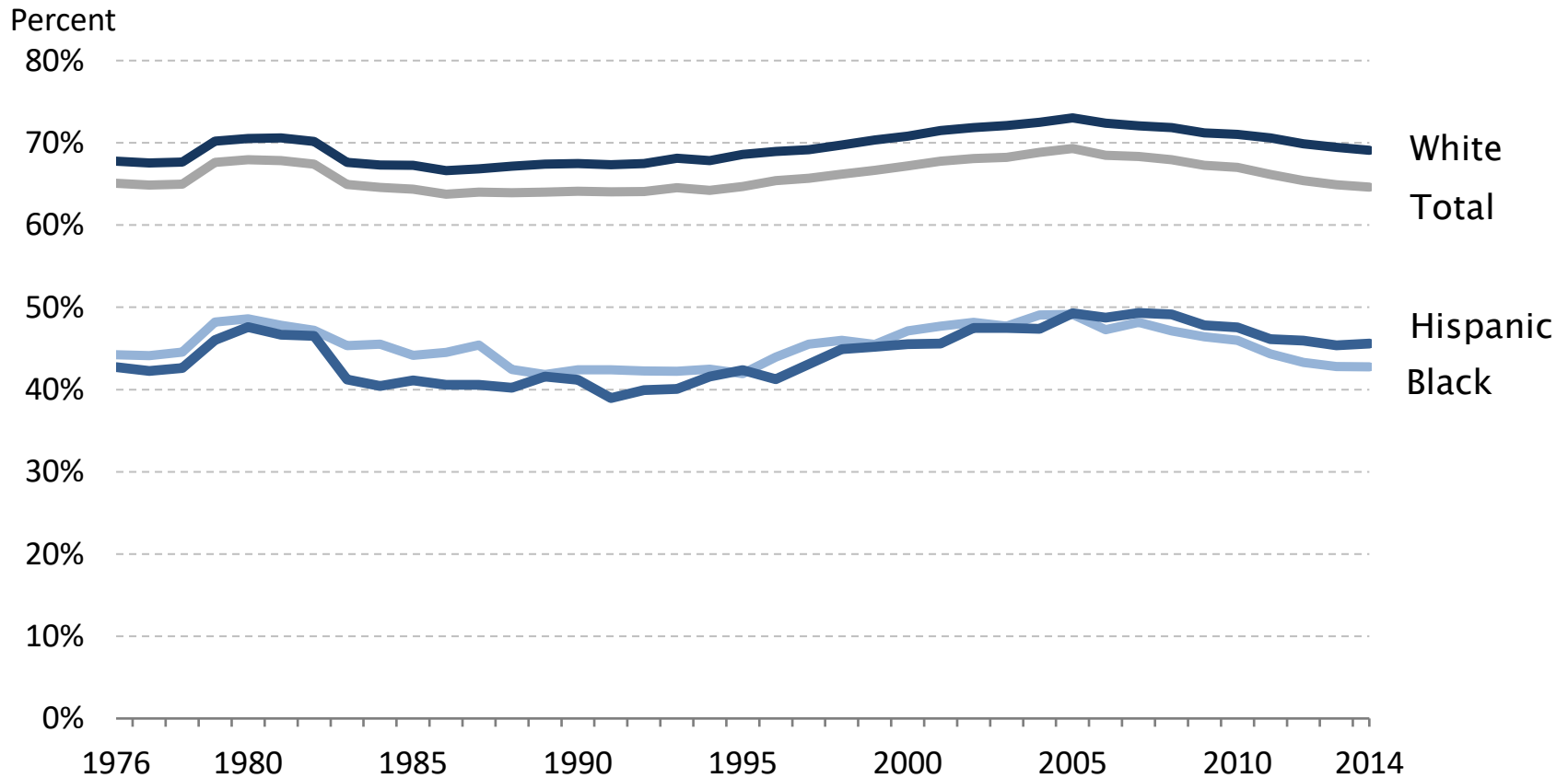


# Figure HH-5. Percent of householders who own their home



Source: U.S. Census Bureau, Current Population Survey, Annual Social and Economic Supplements, 1976 to 2014.

Notes: The collection of race and Hispanic origin has changed over time. Before 2003, respondents had to select a single race. Persons of Hispanic origin may be of any race.

Note: This figure uses a person weight to describe characteristics of people living in households. As a result, estimates of the number of households do not match estimates of housing units from the Housing Vacancy Survey (HVS). The HVS is weighted to housing units, rather than the population, in order to more accurately estimate the number of occupied and vacant housing units.