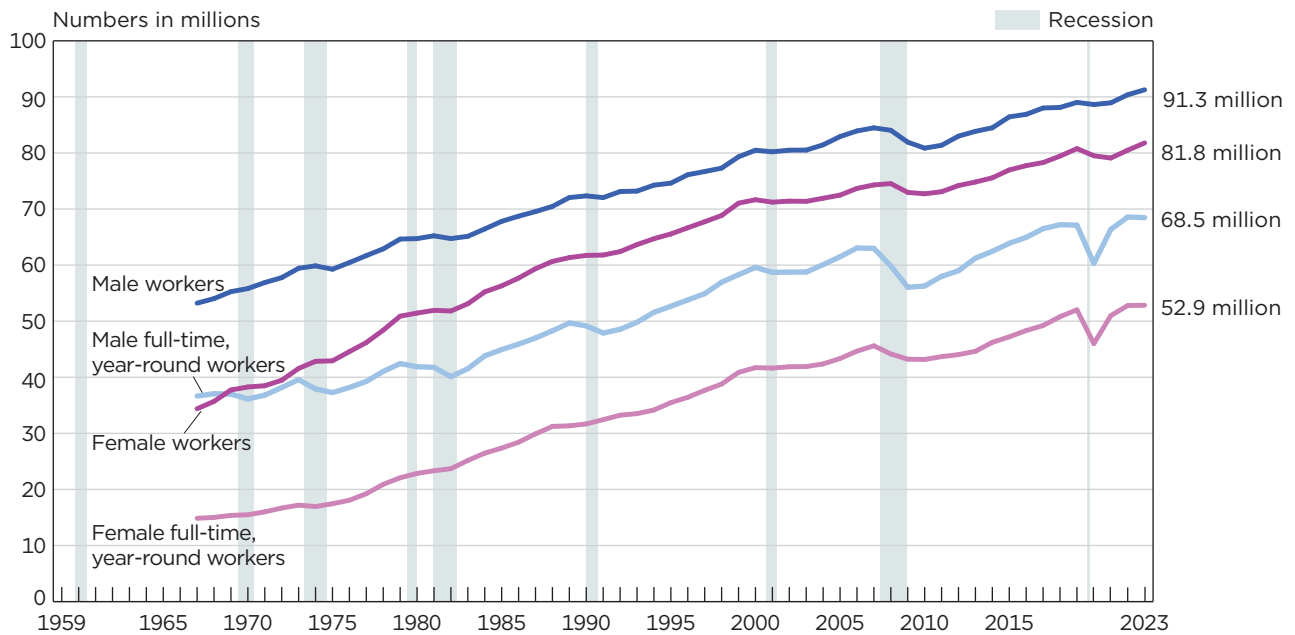


Figure 5.
Total and Full-Time, Year-Round Workers With Earnings by Sex: 1967 to 2023



Note: People 15 years and older, as of March of the following year, with earnings. Refer to Table A-7 for historical footnotes. The data points are placed at the midpoints of the respective years. Data on earnings and counts of full-time, year-round workers are not readily available before 1960 and 1967, respectively. Data are for people aged 14 and older for years prior to 1980. More information on recessions is available in Appendix A. Information on confidentiality protection, sampling error, nonsampling error, and definitions is available at <<https://www2.census.gov/programs-surveys/cps/techdocs/cpsmar24.pdf>>.

Source: U.S. Census Bureau, Current Population Survey, 1968 to 2024 Annual Social and Economic Supplements (CPS ASEC).