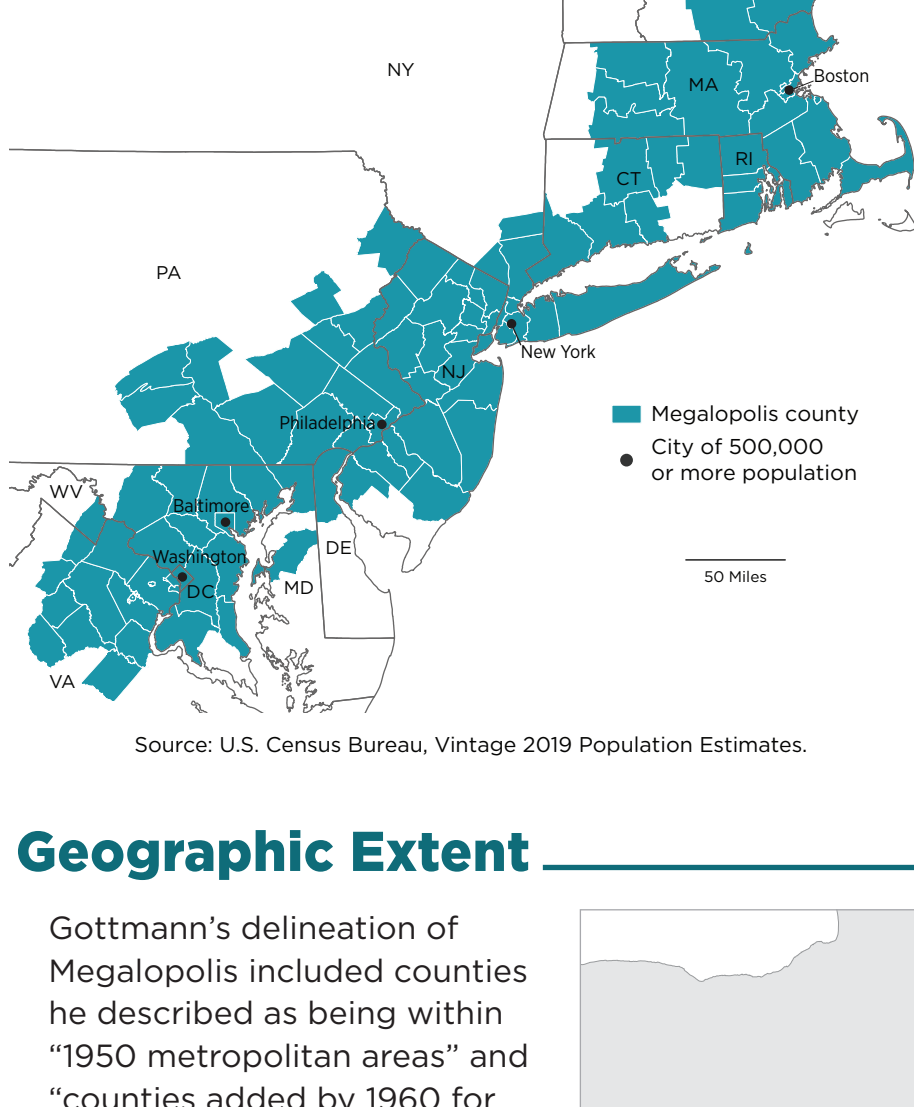


Megalopolis

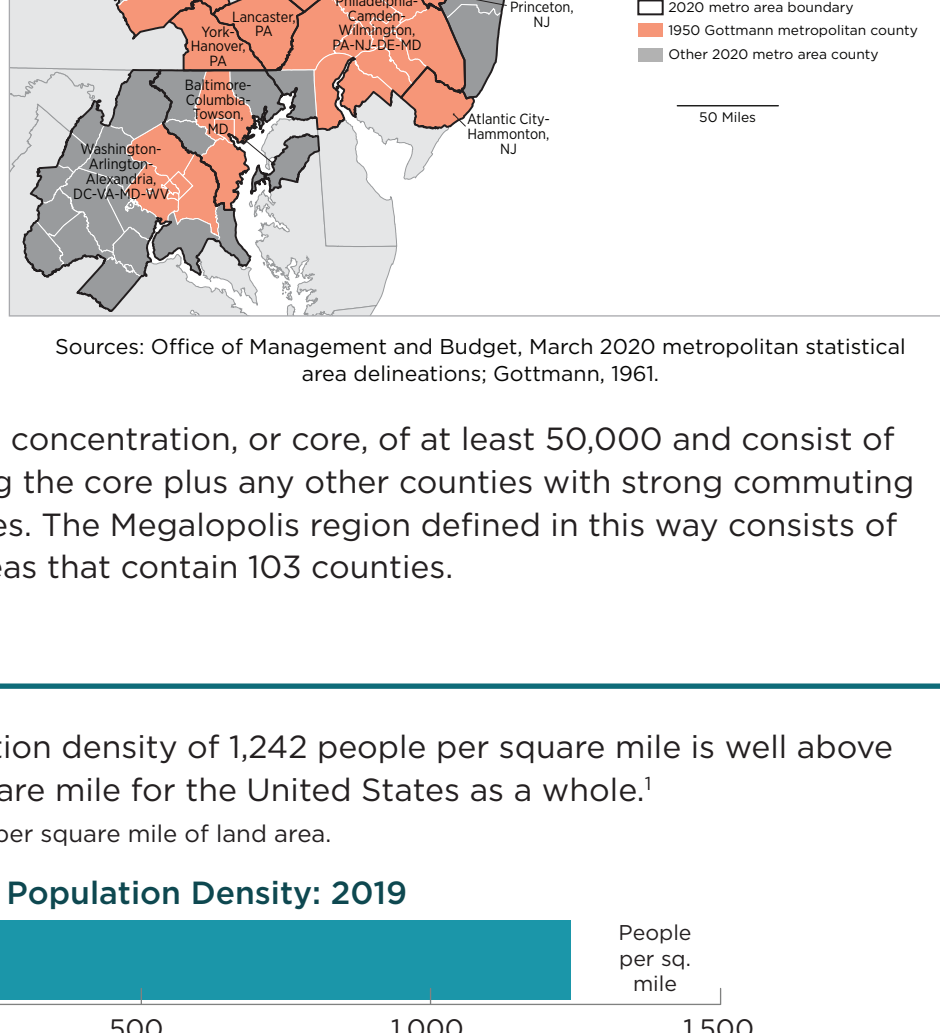


Megalopolis is a region within the northeastern United States that extends from northern Virginia to southern New Hampshire and is anchored by Washington, Baltimore, Philadelphia, New York, and Boston. Roughly 50 million people, nearly 1 out of every 6 Americans, live in a band of 103 counties stretching along the Atlantic coast. Geographer Jean Gottmann's 1961 in-depth study, "Megalopolis: The Urbanized Northeastern Seaboard of the United States," identified the region as a distinctive entity composed of a string of large metropolitan areas.

Source: U.S. Census Bureau, Vintage 2019 Population Estimates.

Geographic Extent

Gottmann's delineation of Megalopolis included counties he described as being within "1950 metropolitan areas" and "counties added by 1960 for this study." He constructed Megalopolis from multiple perspectives, focusing on interactions of populations and economic activities in a large set of counties that he considered to have a metropolitan character. For this infographic, Megalopolis comprises all counties in current (2020) official metropolitan statistical areas (metro areas) that contain at least one of Gottmann's 1950 metropolitan counties.



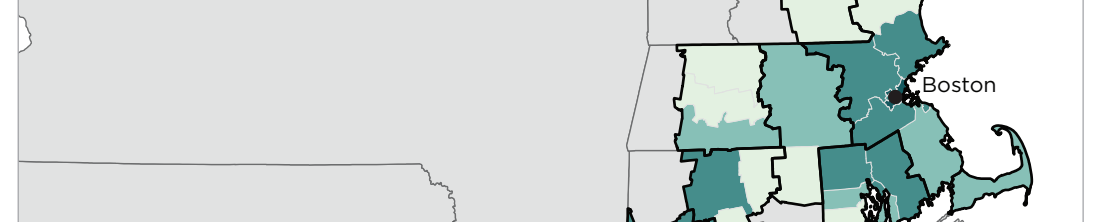
Sources: Office of Management and Budget, March 2020 metropolitan statistical area delineations; Gottmann, 1961.

Metro areas contain a population concentration, or core, of at least 50,000 and consist of the county or counties containing the core plus any other counties with strong commuting ties to the core county or counties. The Megalopolis region defined in this way consists of 20 current, contiguous metro areas that contain 103 counties.

Population Density

The Megalopolis region's population density of 1,242 people per square mile is well above the density of 93 people per square mile for the United States as a whole.¹

¹Population density is expressed as people per square mile of land area.

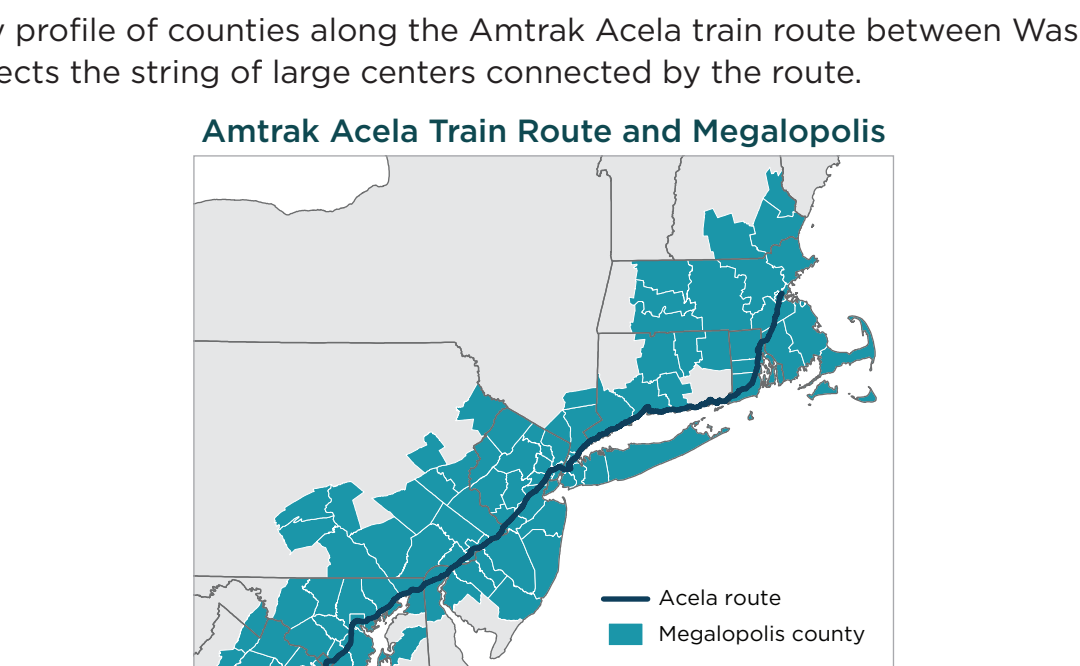


Source: U.S. Census Bureau, Vintage 2019 Population Estimates, 2019 county gazetteer.

A contiguous group of counties from the southern portion of the Philadelphia metro area to the western portion of the Hartford metro area have population densities of 1,000 or greater per square mile.² Additional groups of counties having population densities of 1,000 or greater per square mile occur in portions of the Washington and Baltimore metro areas in the southwestern part of Megalopolis and portions of the Boston and Providence metro areas in the northeastern part of the region. Many of the region's counties have population densities exceeding 500 people per square mile.

²Metro area titles are shortened in the text to the name of the largest city. They are presented in full in maps and graphs.

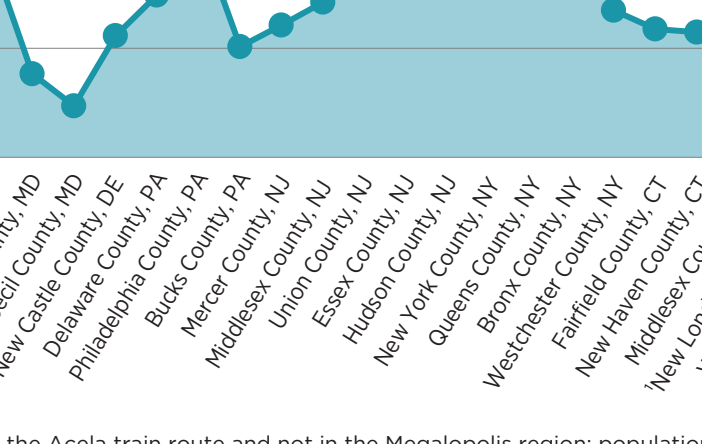
Population Density of Counties in Megalopolis: 2019



Source: U.S. Census Bureau, Vintage 2019 Population Estimates, 2019 county gazetteer.

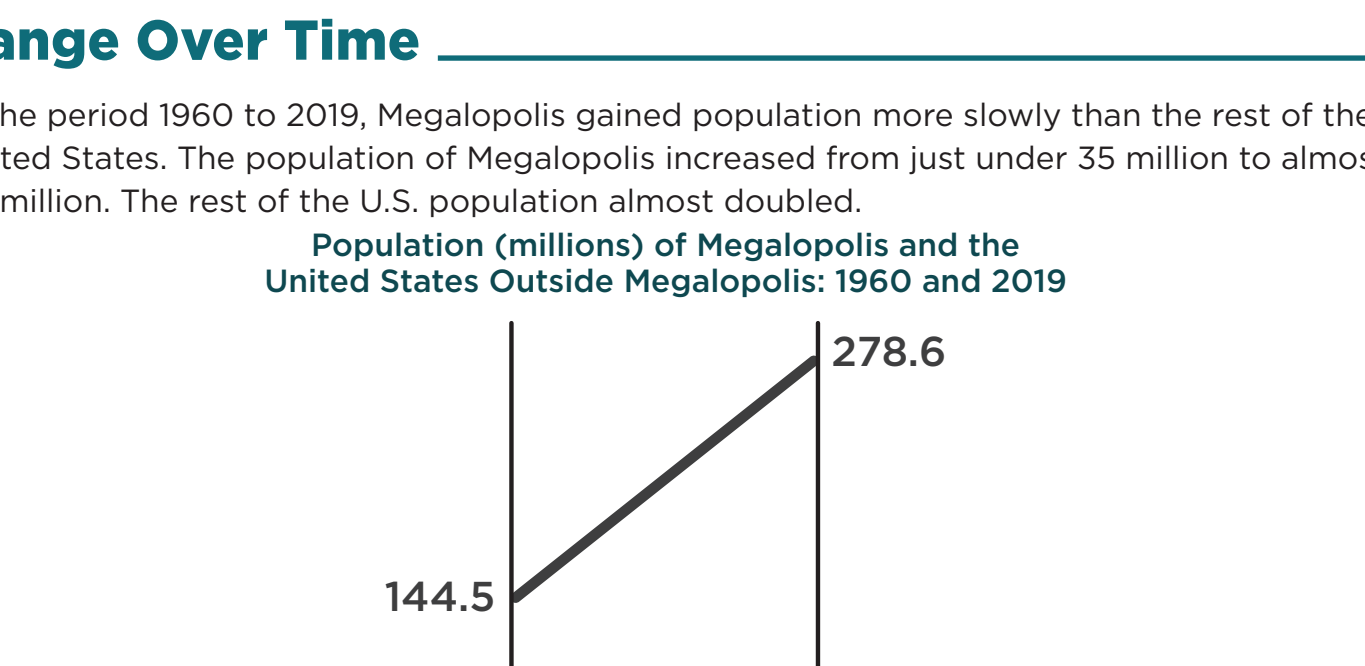
The density profile of counties along the Amtrak Acela train route between Washington and Boston reflects the string of large centers connected by the route.

Amtrak Acela Train Route and Megalopolis



Source: Bureau of Transportation Statistics, 2020 Amtrak routes.

Population Density of Counties Along the Acela Train Route



¹ New London County, CT, is along the Acela train route and not in the Megalopolis region; population density of that county is shown without connecting lines.

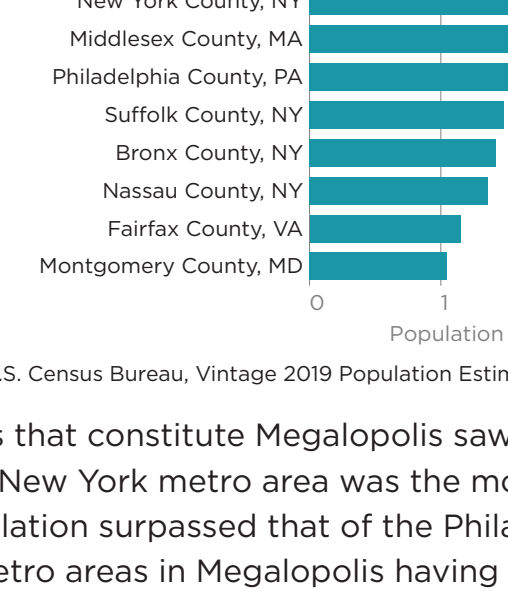
Note: For the density profile of counties along the Acela train route, the order of counties matches their first occurrence on the route when riding toward Boston, MA.

Sources: U.S. Census Bureau, Vintage 2019 Population Estimates, 2019 county gazetteer; Bureau of Transportation Statistics, 2020 Amtrak routes.

Change Over Time

In the period 1960 to 2019, Megalopolis gained population more slowly than the rest of the United States. The population of Megalopolis increased from just under 35 million to almost 50 million. The rest of the U.S. population almost doubled.

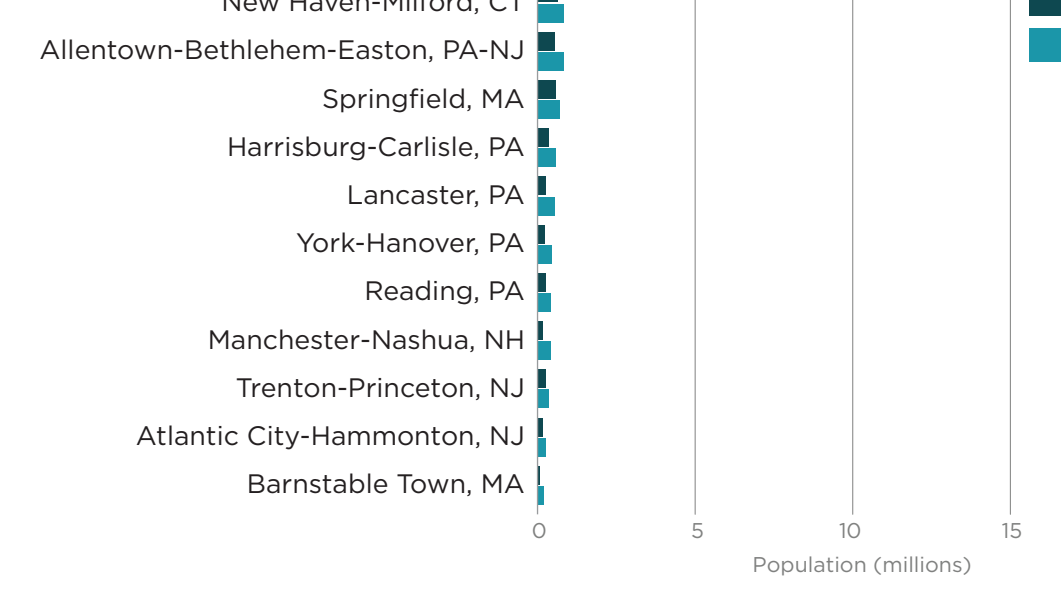
Population (millions) of Megalopolis and the United States Outside Megalopolis: 1960 and 2019



Source: U.S. Census Bureau, Vintage 2019 Population Estimates, 1960 Census.

Seven of the ten most populous counties of Megalopolis in 1960 also appear in the "top ten" list for 2019, though the size rankings of most of those counties changed. The largest county in both years was Kings County, NY (Brooklyn), with a population of about 2.6 million in 2019.

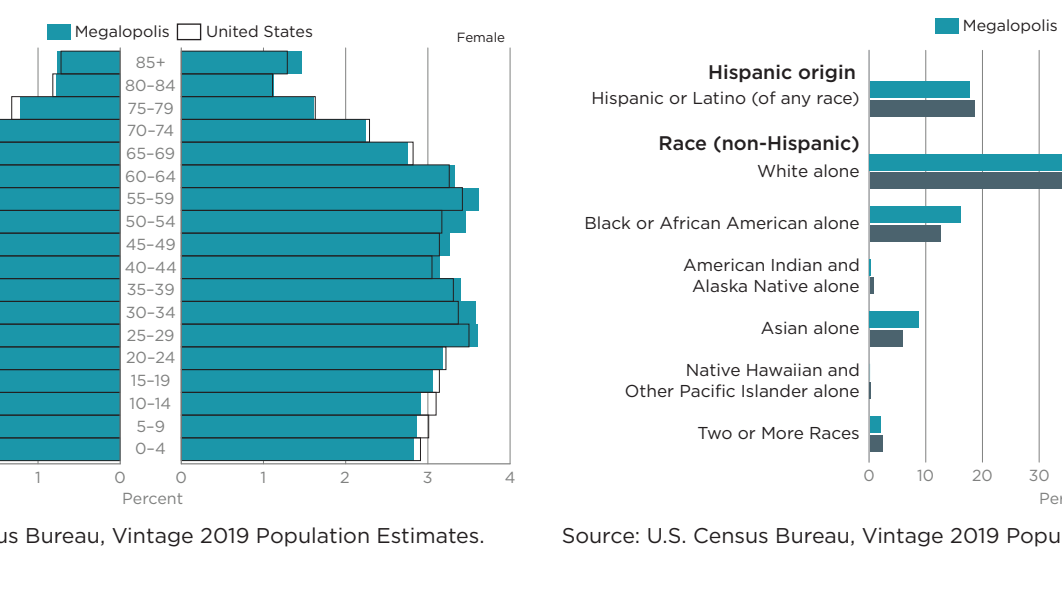
Ten Most Populous Counties in Megalopolis: 1960 and 2019



Source: U.S. Census Bureau, Vintage 2019 Population Estimates, 1960 Census.

All of the current metro areas that constitute Megalopolis saw increases in population between 1960 and 2019. The New York metro area was the most populous in both years. The Washington metro area population surpassed that of the Philadelphia and Boston metro areas. Also, the number of metro areas in Megalopolis having at least five million in population increased from one to three.

Megalopolis Population by Metro Area

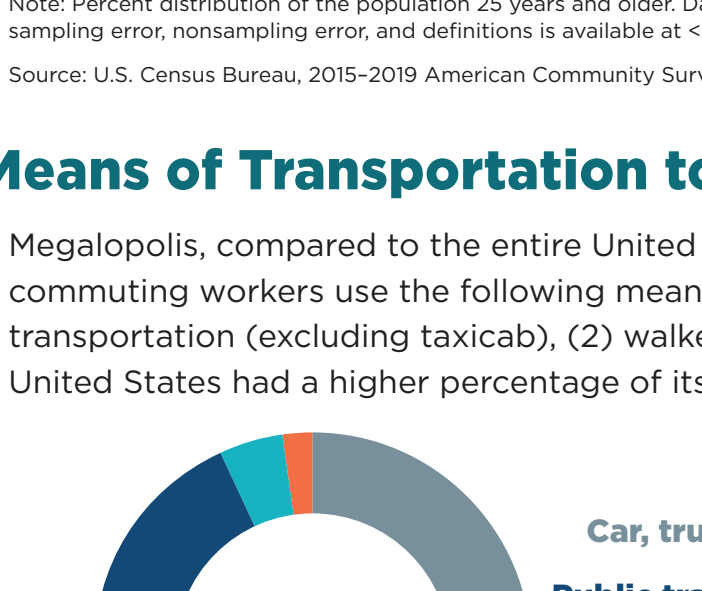


Sources: U.S. Census Bureau, Vintage 2019 Population Estimates, 1960 Census; Office of Management and Budget, March 2020 metropolitan statistical area delineations.

Demographic Characteristics

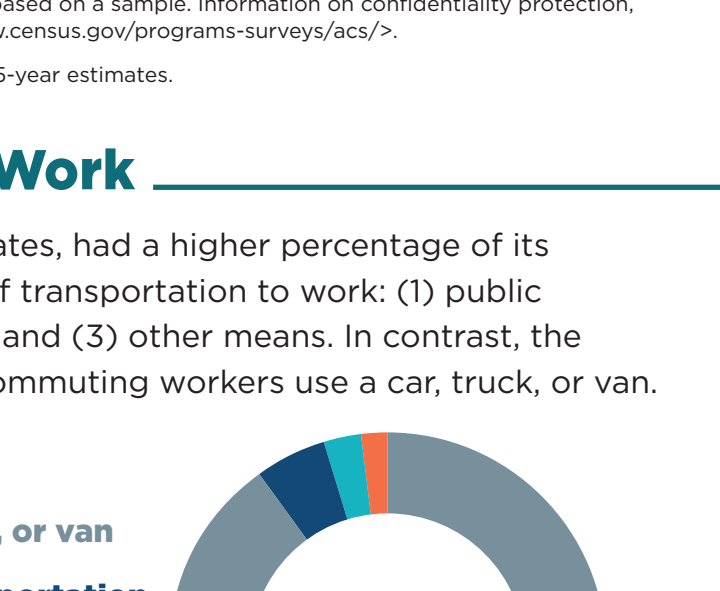
To the Megalopolis region overall has a lower percentage of children and young adults (ages 0 to 24) than the United States as a whole. Most remaining categories in the working-age population (ages 25 to 64) are somewhat above the percentage for the entire country. In addition, the Black or African American alone and Asian alone populations constituted slightly higher proportions of the Megalopolis population when compared to the nation in its entirety.

Percentage of Total Population of Megalopolis and the United States by Age and Sex: 2019



Source: U.S. Census Bureau, Vintage 2019 Population Estimates.

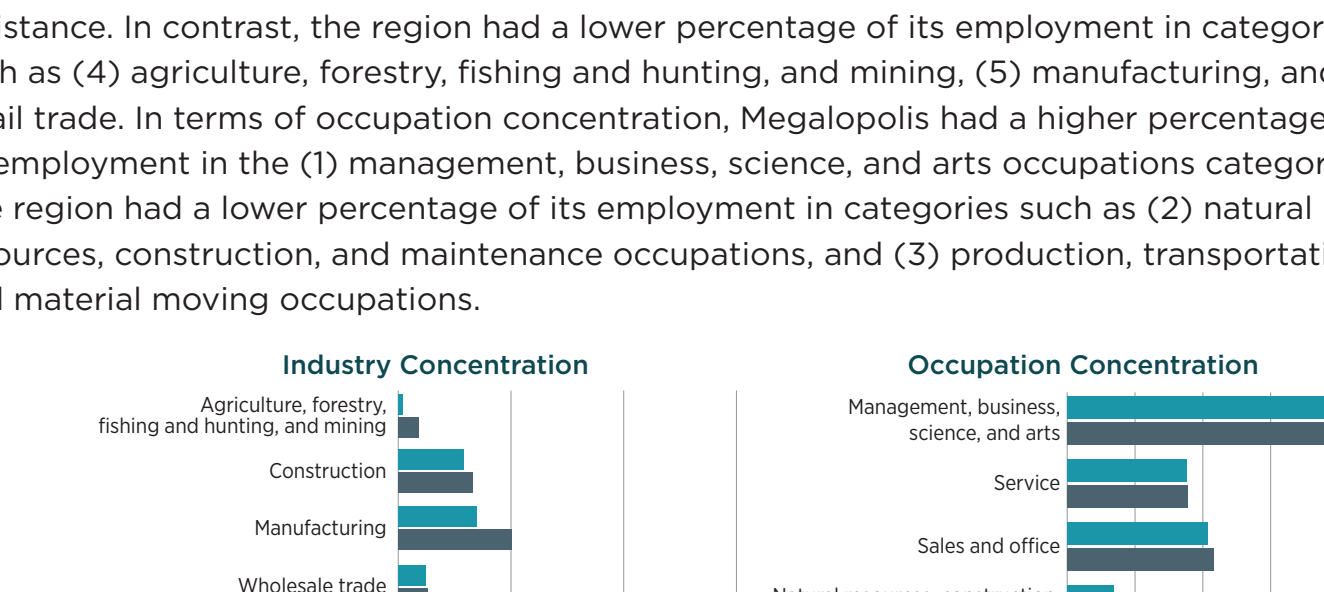
Percentage of Megalopolis and the United States Population by Hispanic Origin and Race: 2019



Source: U.S. Census Bureau, Vintage 2019 Population Estimates.

Educational Attainment

Compared to the entire United States, Megalopolis had a higher percentage of its adult population with a (1) bachelor's degree and (2) graduate or professional degree. By comparison, the region had a lower percentage in categories such as (3) high school graduate (includes equivalency); (4) some college, no degree; and (5) associate's degree.



¹Estimates for Megalopolis and the United States are not significantly different.

Note: Percent distribution of the population 25 years and older. Data based on a sample. Information on confidentiality protection, sampling error, and definitions is available at <www.census.gov/programs-surveys/acs/>.

Source: U.S. Census Bureau, 2015-2019 American Community Survey, 5-year estimates.

Means of Transportation to Work

Megalopolis, compared to the entire United States, had a higher percentage of its commuting workers use the following means of transportation to work: (1) public transportation (excluding taxicab), (2) walked, and (3) other means. In contrast, the United States had a higher percentage of its commuting workers use a car, truck, or van.



Notes: Percent distribution of workers 16 years and older who did not work from home. Data based on a sample. Information on confidentiality protection, sampling error, and definitions is available at <www.census.gov/programs-surveys/acs/>.

Source: U.S. Census Bureau, 2015-2019 American Community Survey, 5-year estimates.

Industry and Occupation Characteristics

Compared to the entire United States, the region had a higher percentage of its employment in industry categories such as (1) finance and insurance, and real estate, and rental and leasing, (2) professional, scientific, and management, and administrative, and waste management services, and (3) educational services, and health care and social assistance. In contrast, the region had a lower percentage of its employment in categories such as (4) agriculture, forestry, fishing and hunting, and mining, (5) manufacturing, and (6) retail trade. In terms of occupation concentration, Megalopolis had a higher percentage of its employment in the (1) management, business, science, and arts occupations category. The region had a lower percentage of its employment in categories such as (2) natural resources, construction, and maintenance occupations, and (3) production, transportation, and material moving occupations.

Industry Concentration

Occupation Concentration

Note: Percent distribution of the civilian-employed population 16 years and older. Data based on a sample. Information on confidentiality protection, sampling error, nonsampling error, and definitions is available at <www.census.gov/programs-surveys/acs/>.

Source: U.S. Census Bureau, 2015-2019 American Community Survey, 5-year estimates.