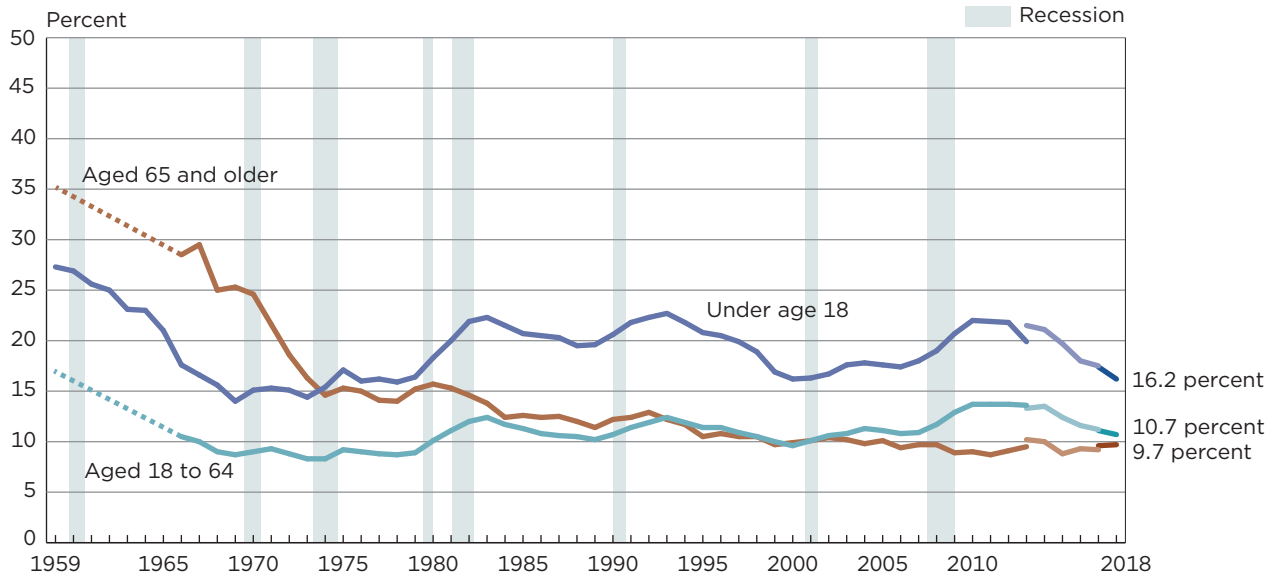


Figure 11.
Poverty Rates by Age: 1959 to 2018



Note: The data for 2017 and beyond reflect the implementation of an updated processing system. See Appendix D for more information. The data for 2013 and beyond reflect the implementation of the redesigned income questions. The data points are placed at the midpoints of the respective years. Data for people aged 18 to 64 and aged 65 and older are not available from 1960 to 1965. For information on recessions, see Appendix A. For information on confidentiality protection, sampling error, nonsampling error, and definitions, see <<https://www2.census.gov/programs-surveys/cps/techdocs/cpsmar19.pdf>>.

Source: U.S. Census Bureau, Current Population Survey, 1960 to 2019 Annual Social and Economic Supplements.