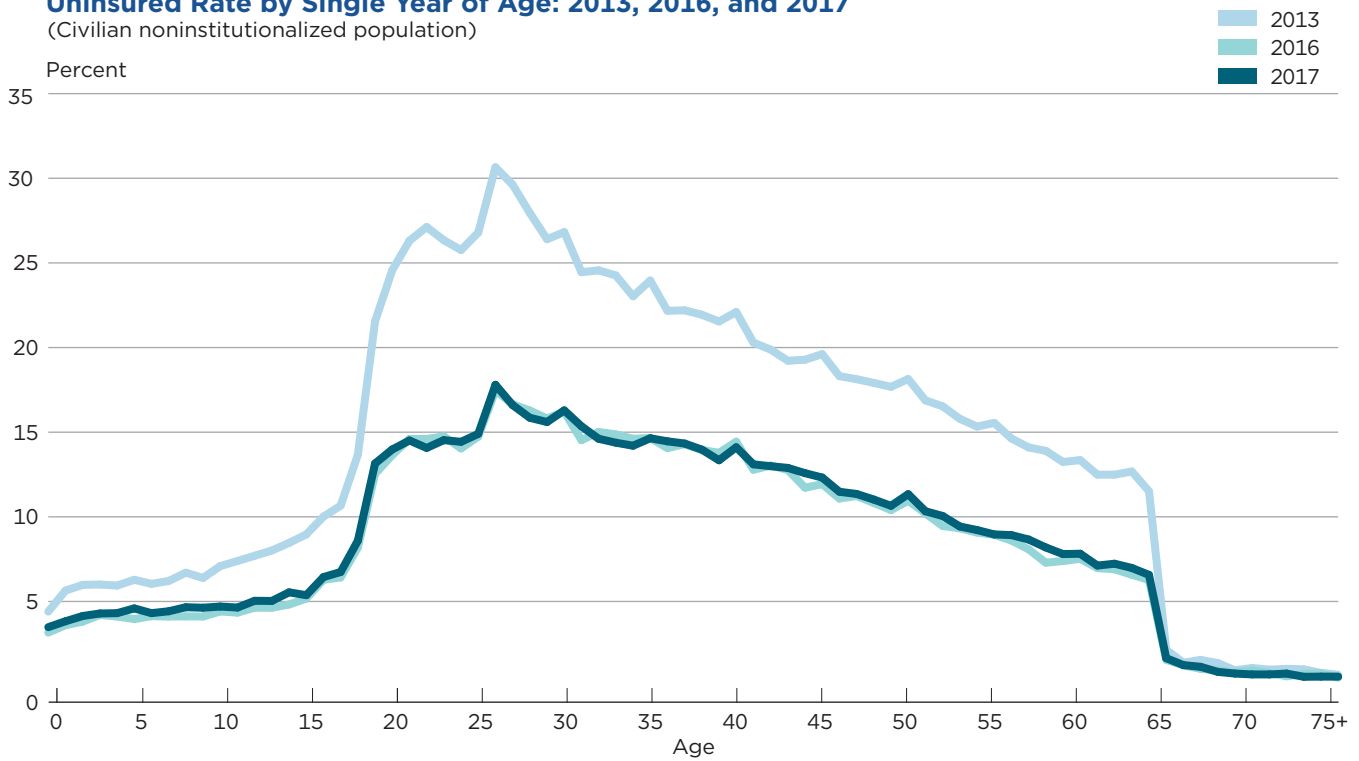


Figure 4.  
**Uninsured Rate by Single Year of Age: 2013, 2016, and 2017**  
 (Civilian noninstitutionalized population)



For information on confidentiality protection, sampling error, nonsampling error, and definitions in the American Community Survey, see <[www2.census.gov/programs-surveys/acs/tech\\_docs/accuracy/ACS\\_Accuracy\\_of\\_Data\\_2017.pdf](http://www2.census.gov/programs-surveys/acs/tech_docs/accuracy/ACS_Accuracy_of_Data_2017.pdf)>.

Source: U.S. Census Bureau, 2013, 2016, and 2017 American Community Surveys, 1-Year Estimates.