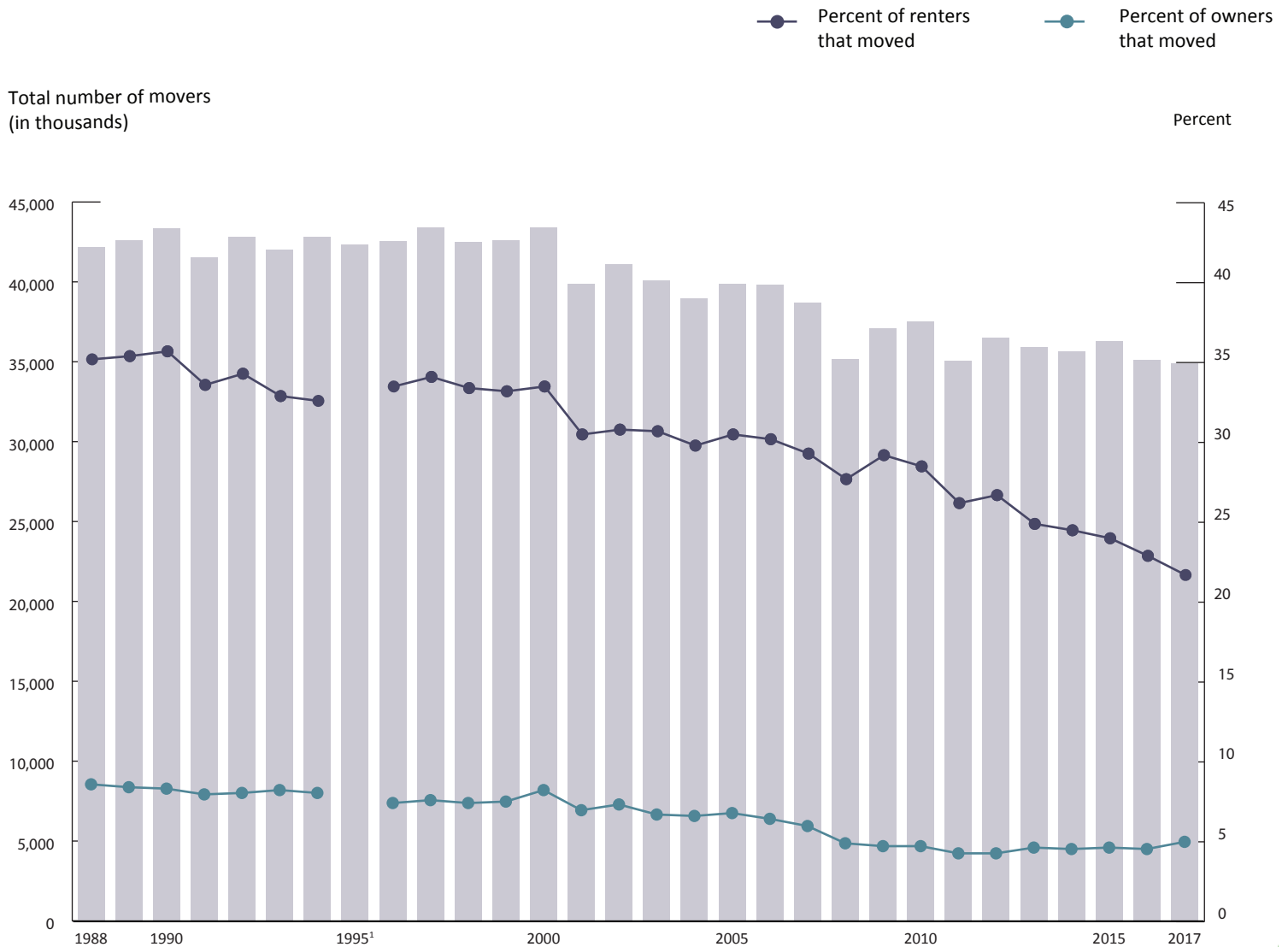




# Mover Rate for Renters at Historic Low

Renters Continue to Move at Higher Rate than Owners



<sup>1</sup> The one-year migration data by tenure are not available for 1995.

Note: Renter refers to all people (1 year old and over) living in the rented unit, not just the person/persons on the lease. The term owner refers to all people (1 year old and over) living in the owned unit, not just the person/persons on the deed or mortgage.

Overall  
2017 U.S.  
Mover Rate  
**11.0%**

