



# MEASURING AMERICA

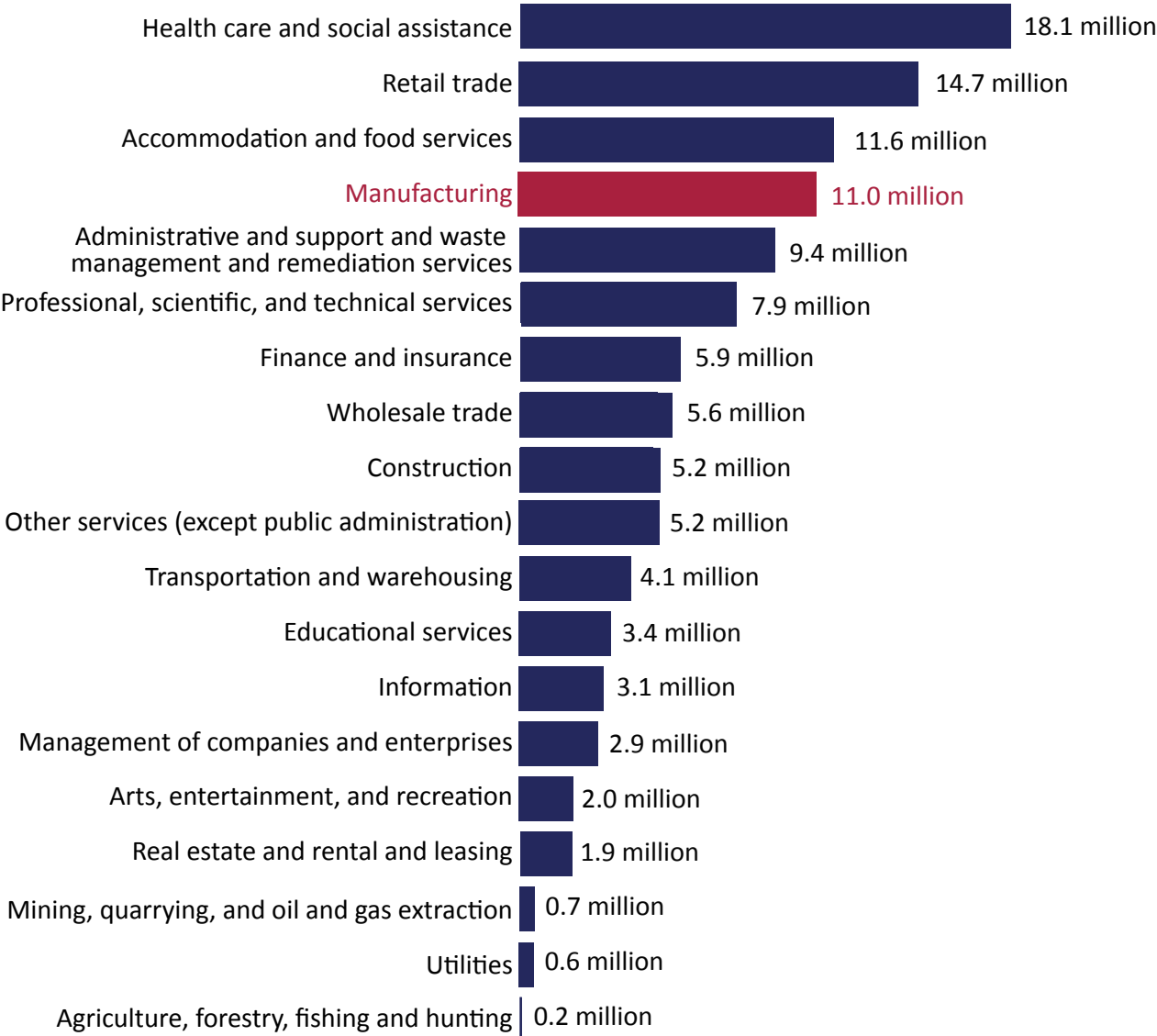
November 13, 2013

## Manufacturing in America

Manufacturing plays a major role in our economy. According to the Census Bureau's latest County Business Patterns, the manufacturing sector includes almost 300,000 establishments with 11 million employees producing goods that we consume domestically or export abroad. The nation relies on several key Census Bureau programs to track America's manufacturing. The most recent year's data from some of these programs are highlighted below.

# How does manufacturing compare to other industries?

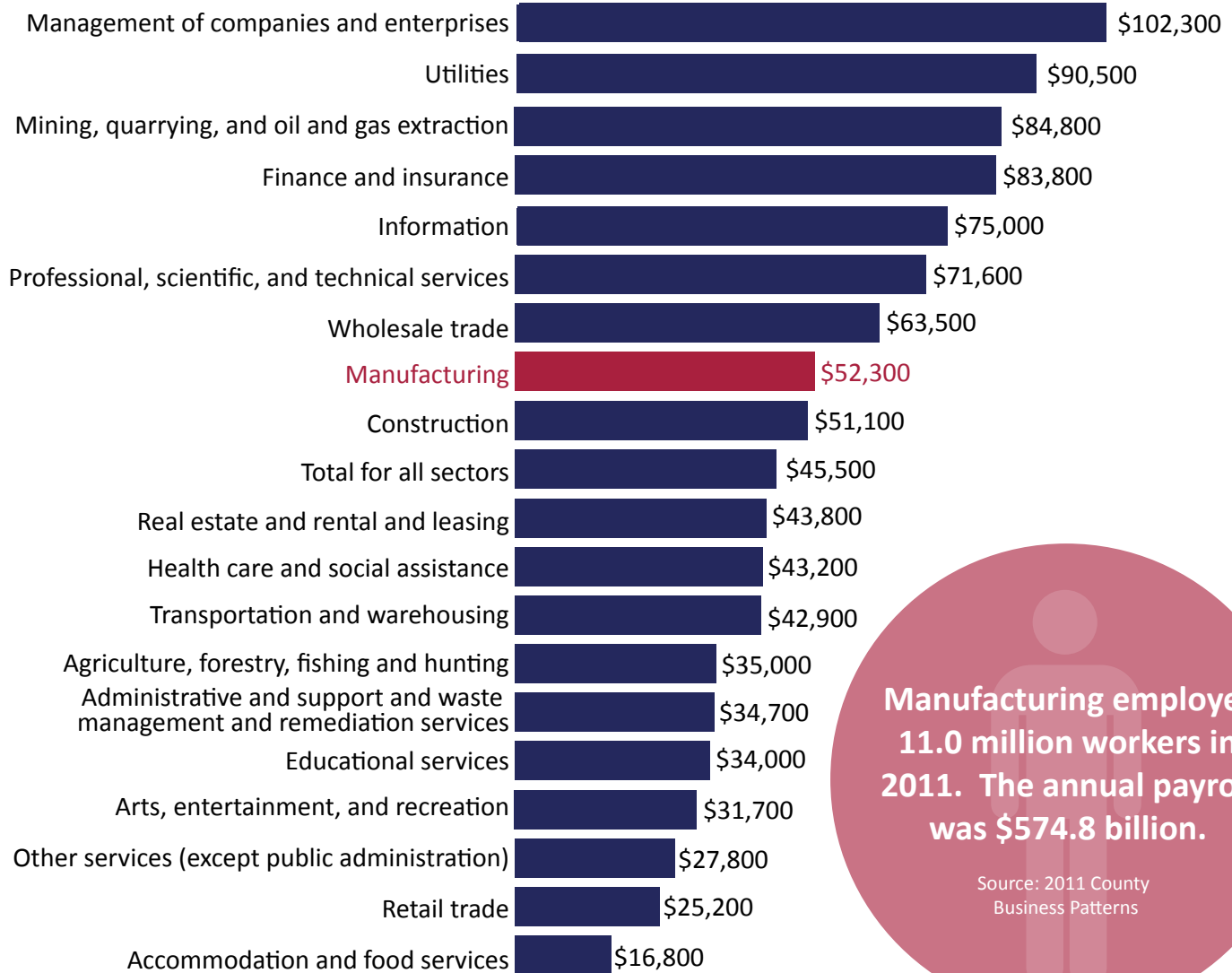
## Manufacturing is the 4th Largest Employer



Source: 2011 County Business Patterns

# How does manufacturing compare to other industries?

## Average Annual Payroll per Employee by Sector



Manufacturing employed 11.0 million workers in 2011. The annual payroll was \$574.8 billion.

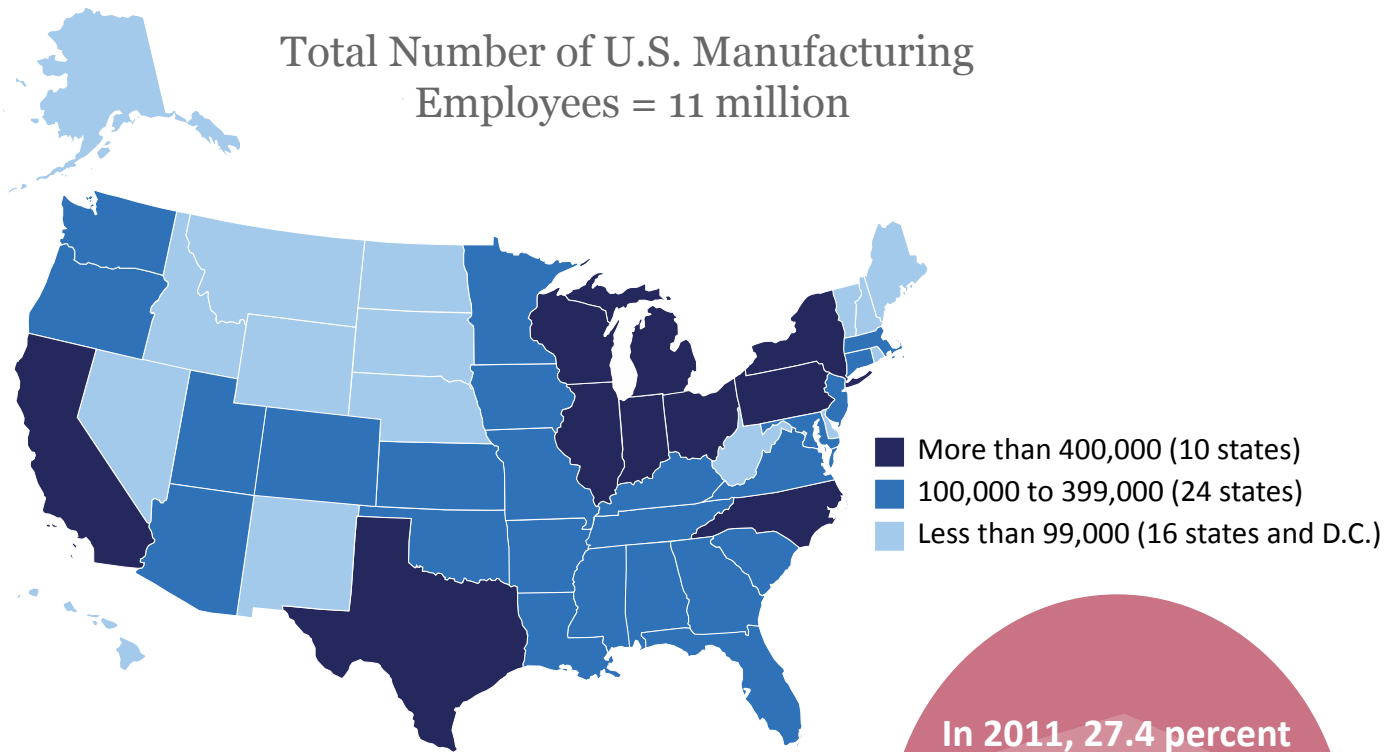
Source: 2011 County Business Patterns

Source: 2011 County Business Patterns

# Where does manufacturing occur in the U.S.?

## Manufacturing Employees by State

Total Number of U.S. Manufacturing Employees = 11 million



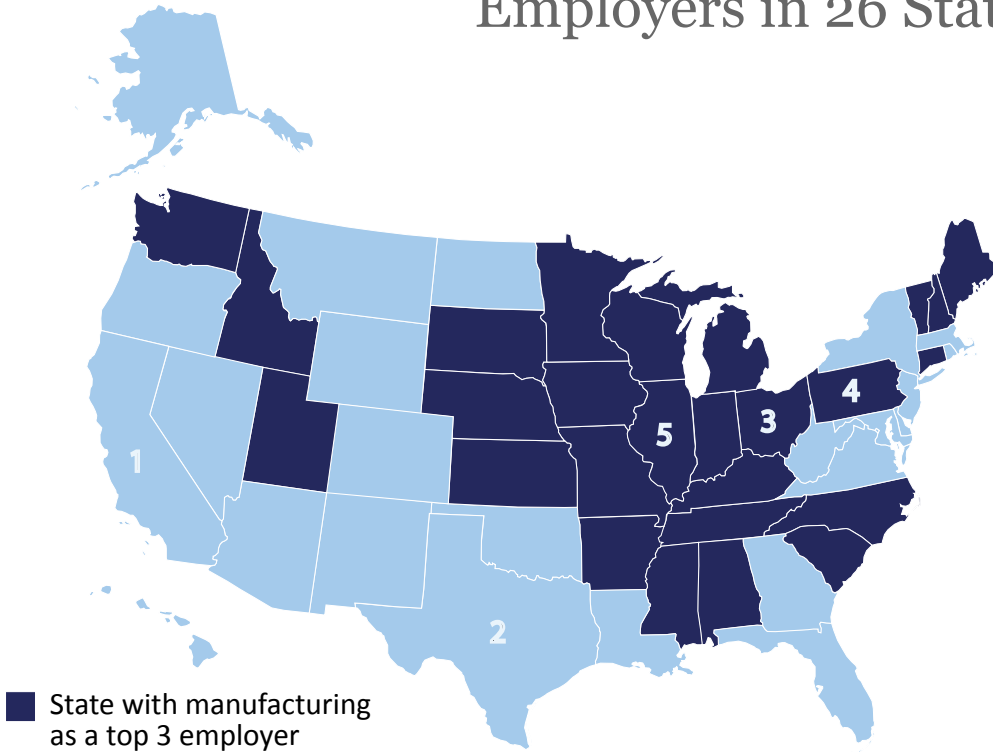
Source: 2011 County Business Patterns

In 2011, 27.4 percent of manufacturing employees 25 and older had a bachelor's degree or higher.

Source: 2011 Current Population Survey

# Where does manufacturing occur in the U.S.?

## Manufacturing Is One of the Top 3 Employers in 26 States



Source: 2011 County Business Patterns

The 146,615 manufacturing establishments in these states employ over 6 million people with over \$320 billion in annual payroll.

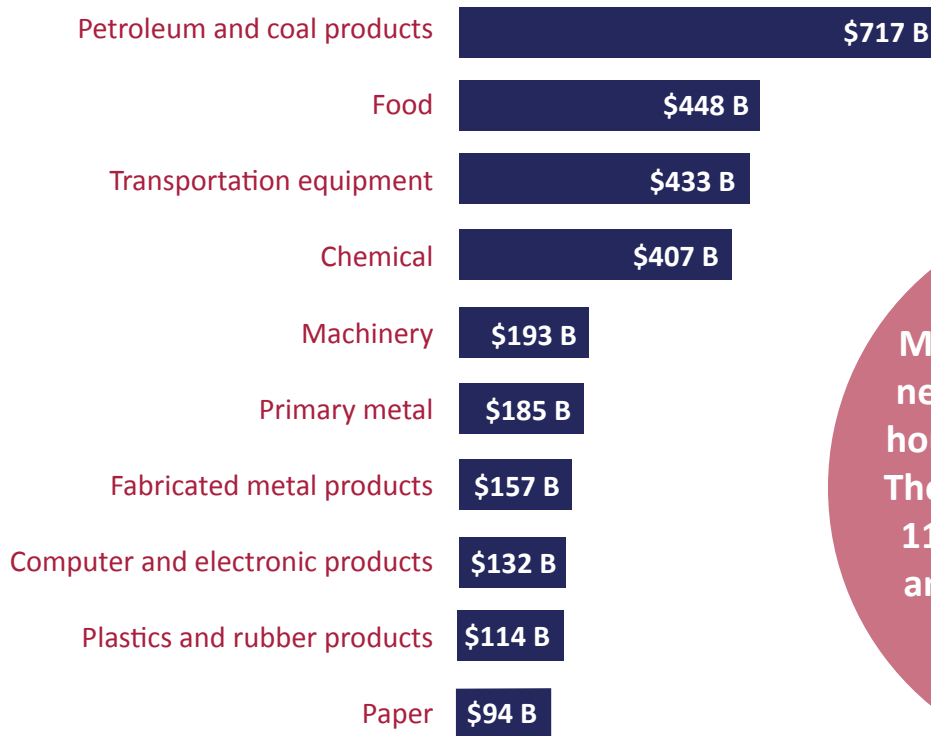
### Top 5 States in Manufacturing Employment: 2011

- \*1. California ..... 1,134,193
- \*2. Texas ..... 733,679
- 3. Ohio ..... 614,027
- 4. Pennsylvania ..... 546,956
- 5. Illinois ..... 538,985

\*Manufacturing is not among the top 3 employers in California and Texas

# How much do manufacturers consume?

## Top 10 Industries by Cost of Materials (Billions of Dollars)



Source: 2011 Annual Survey of Manufactures

Manufacturers purchased nearly 831 billion kilowatt hours of electricity in 2011. They also generated nearly 119 billion kilowatt hours and sold nearly 35 billion kilowatt hours.

Source: 2011 Annual Survey of Manufactures

Of the \$147 billion in capital expenditures in 2011, 85 percent was spent on new and used machinery and equipment.

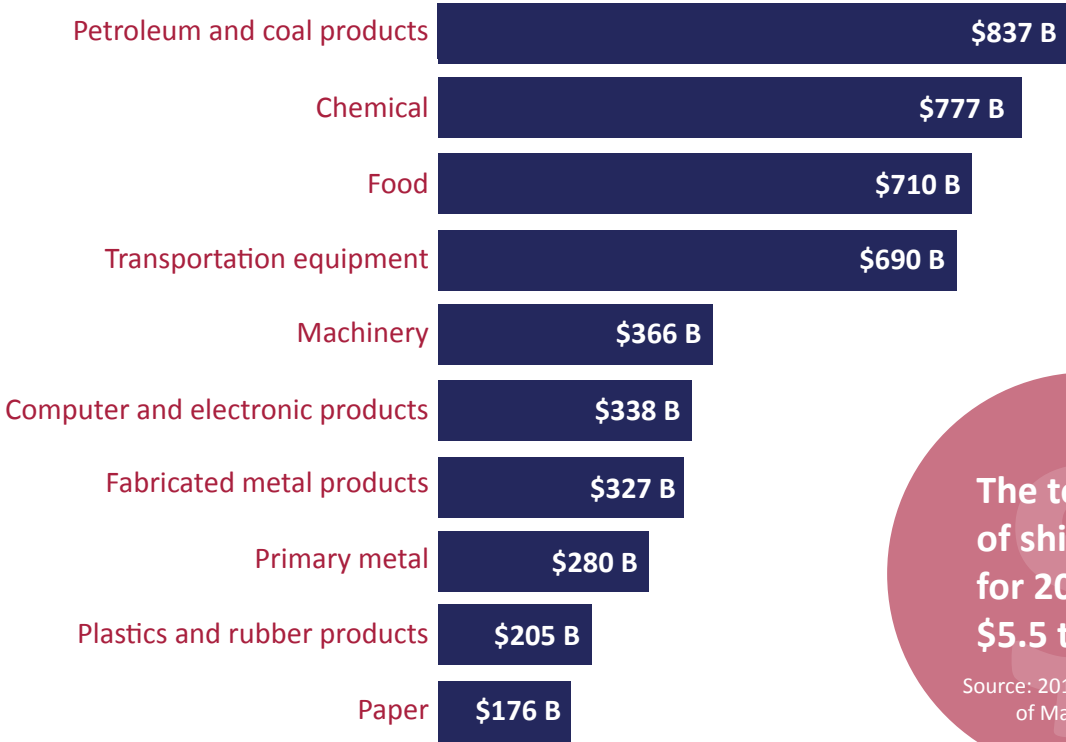
Source: 2011 Annual Survey of Manufactures

Manufacturers spent \$3.2 trillion on materials and in addition spent \$147 billion on capital expenditures.

Source: 2011 Annual Survey of Manufactures

# Which industries have the largest value of shipments?

## Top 10 Industries by Value of Shipments (Billions of Dollars)



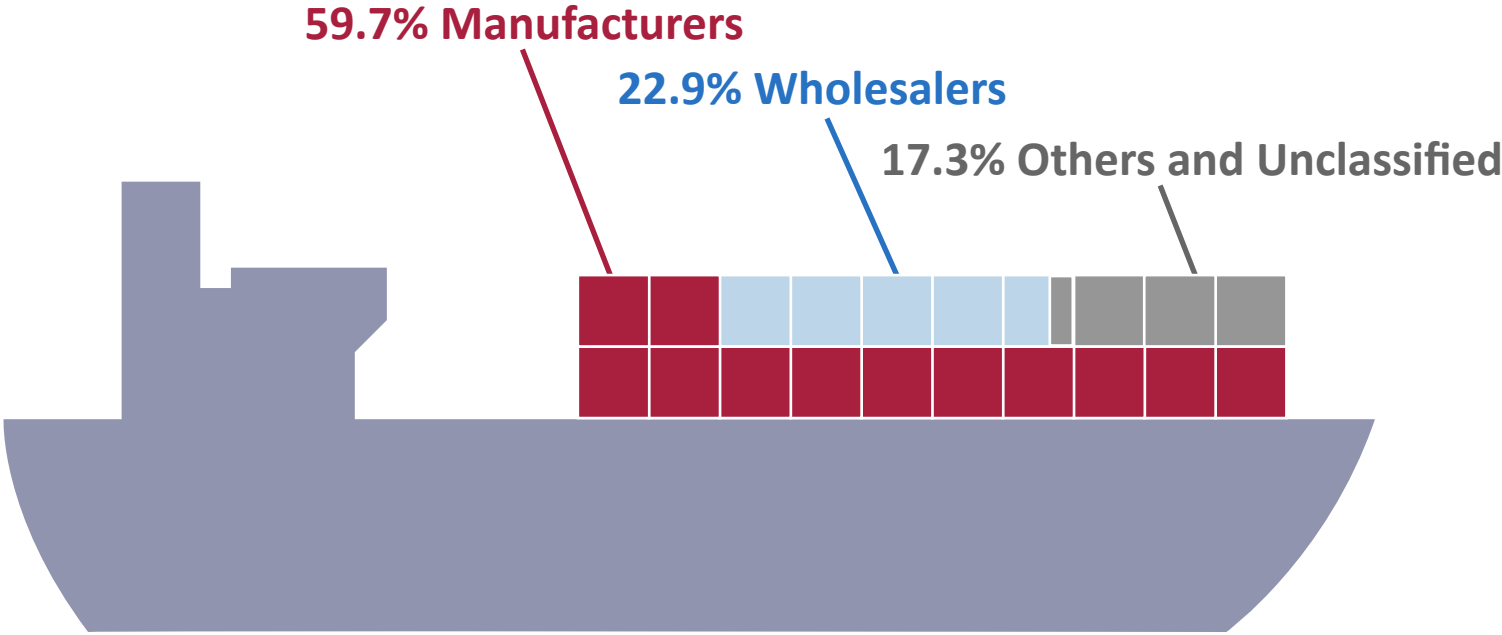
The total value of shipments for 2011 was \$5.5 trillion.

Source: 2011 Annual Survey of Manufactures

Source: 2011 Annual Survey of Manufactures

# How does manufacturing contribute to exports?

About 6 in 10 U.S. Export Dollars  
Come from Manufacturers\*



\*Note: Graphic shows the known value of the portion of U.S. exports that could be matched to specific companies.  
Source: A Profile of U.S. Importing and Exporting Companies, 2010-2011

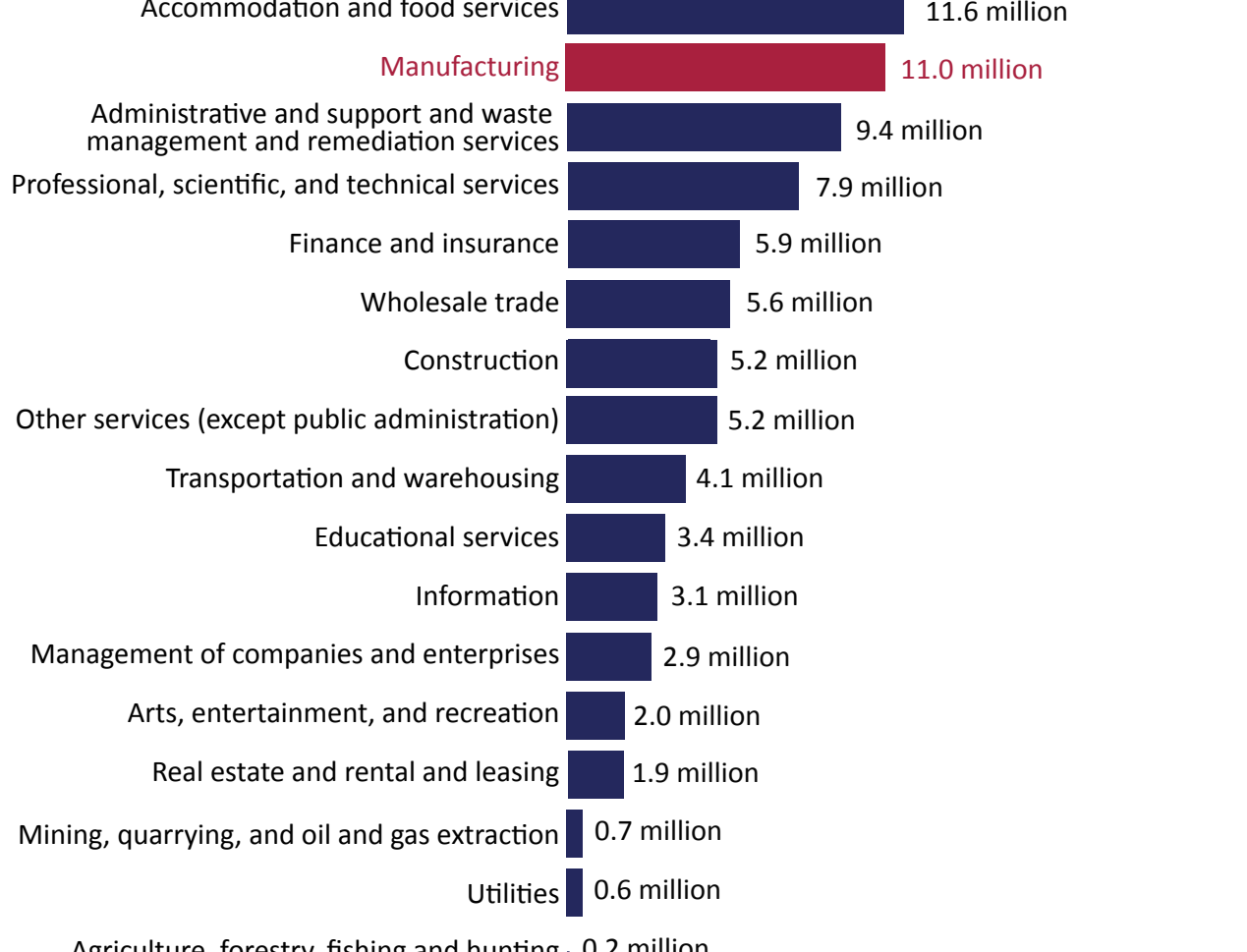


## Manufacturing in America

Manufacturing plays a major role in our economy. According to the Census Bureau's latest County Business Patterns, the manufacturing sector includes almost 300,000 establishments with 11 million employees producing goods that we consume domestically or export abroad. The nation relies on several key Census Bureau programs to track America's manufacturing. The most recent year's data from some of these programs are highlighted below.

### How does manufacturing compare to other industries?

#### Manufacturing is the 4th Largest Employer



Source: 2011 County Business Patterns

#### Average Annual Payroll per Employee by Sector



Source: 2011 County Business Patterns

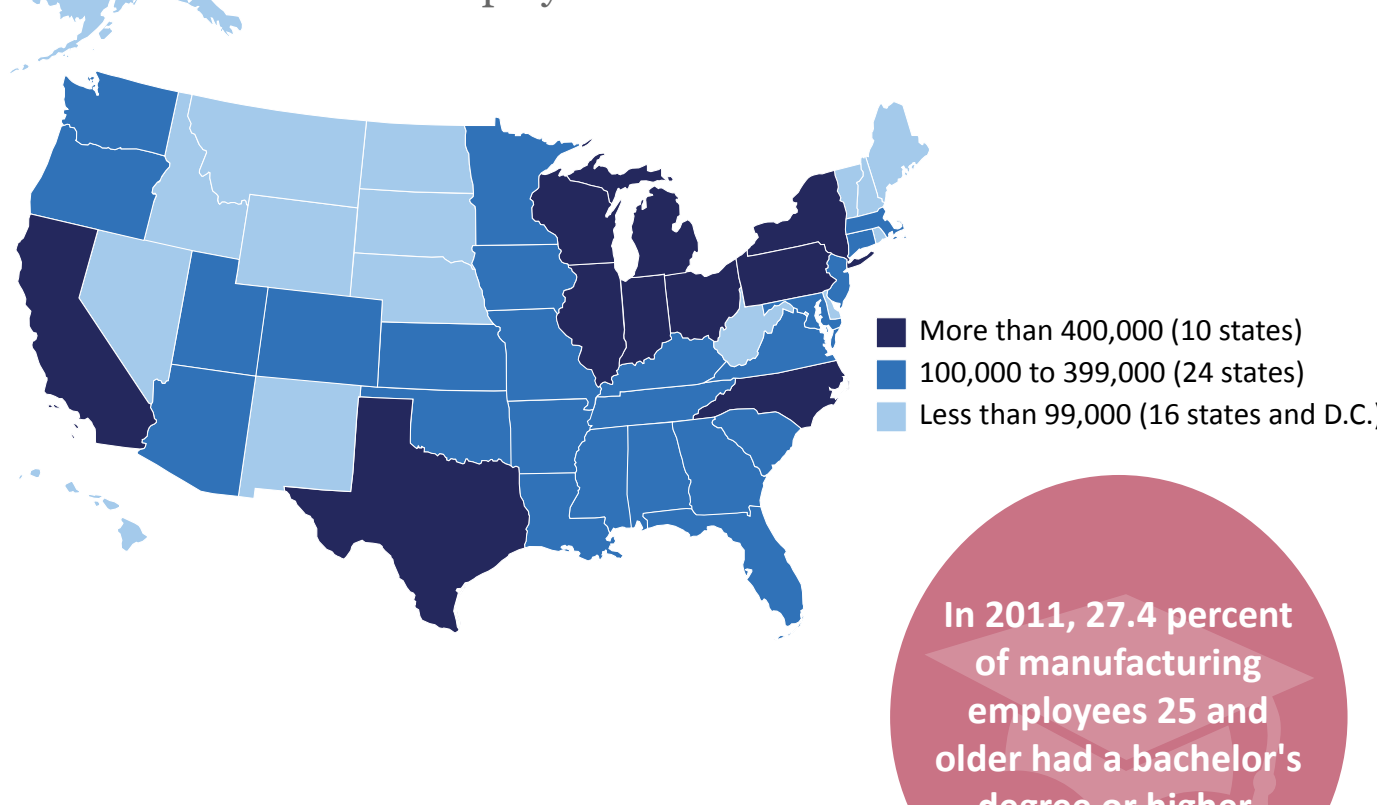
**Manufacturing employed 11.0 million workers in 2011. The annual payroll was \$574.8 billion.**

Source: 2011 County Business Patterns

### Where does manufacturing occur in the U.S.?

#### Manufacturing Employees by State

Total Number of U.S. Manufacturing Employees = 11 million

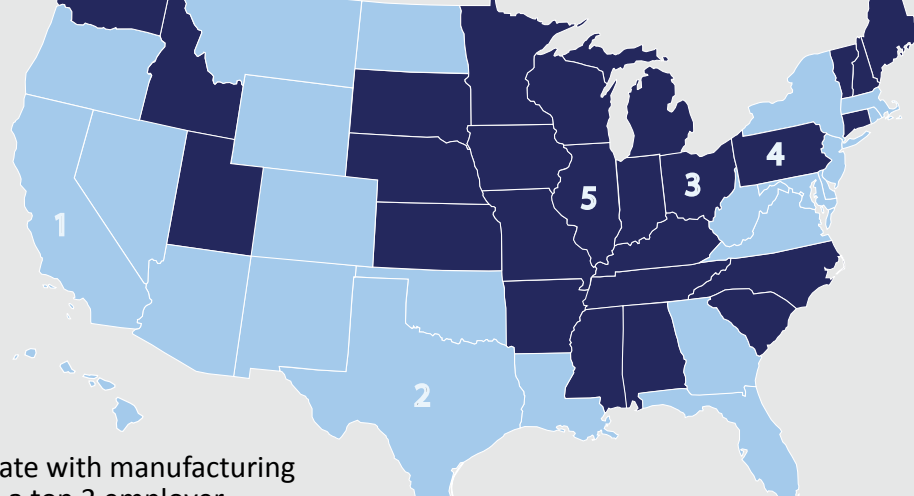


Source: 2011 County Business Patterns

**In 2011, 27.4 percent of manufacturing employees 25 and older had a bachelor's degree or higher.**

Source: 2011 Current Population Survey

#### Manufacturing Is One of the Top 3 Employers in 26 States



Source: 2011 County Business Patterns

The 146,615 manufacturing establishments in these states employ over 6 million people with over \$320 billion in annual payroll.

**Top 5 States in Manufacturing Employment: 2011**

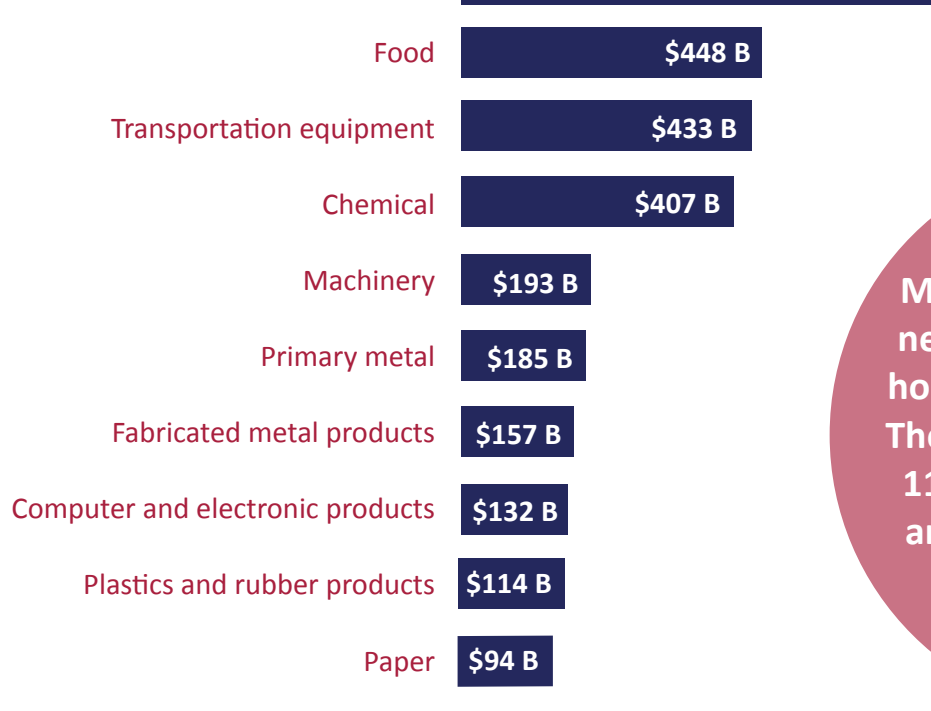
- \*1. California ..... 1,134,193
- \*2. Texas ..... 733,679
- 3. Ohio ..... 614,027
- 4. Pennsylvania ..... 546,956
- 5. Illinois ..... 538,985

\*Manufacturing is not among the top 3 employers in California and Texas

### How much do manufacturers consume?

#### Top 10 Industries by Cost of Materials

(Billions of Dollars)



Source: 2011 Annual Survey of Manufactures

**Manufacturers purchased nearly 831 billion kilowatt hours of electricity in 2011. They also generated nearly 119 billion kilowatt hours and sold nearly 35 billion kilowatt hours.**

Source: 2011 Annual Survey of Manufactures

**Of the \$147 billion in capital expenditures in 2011, 85 percent was spent on new and used machinery and equipment.**

Source: 2011 Annual Survey of Manufactures

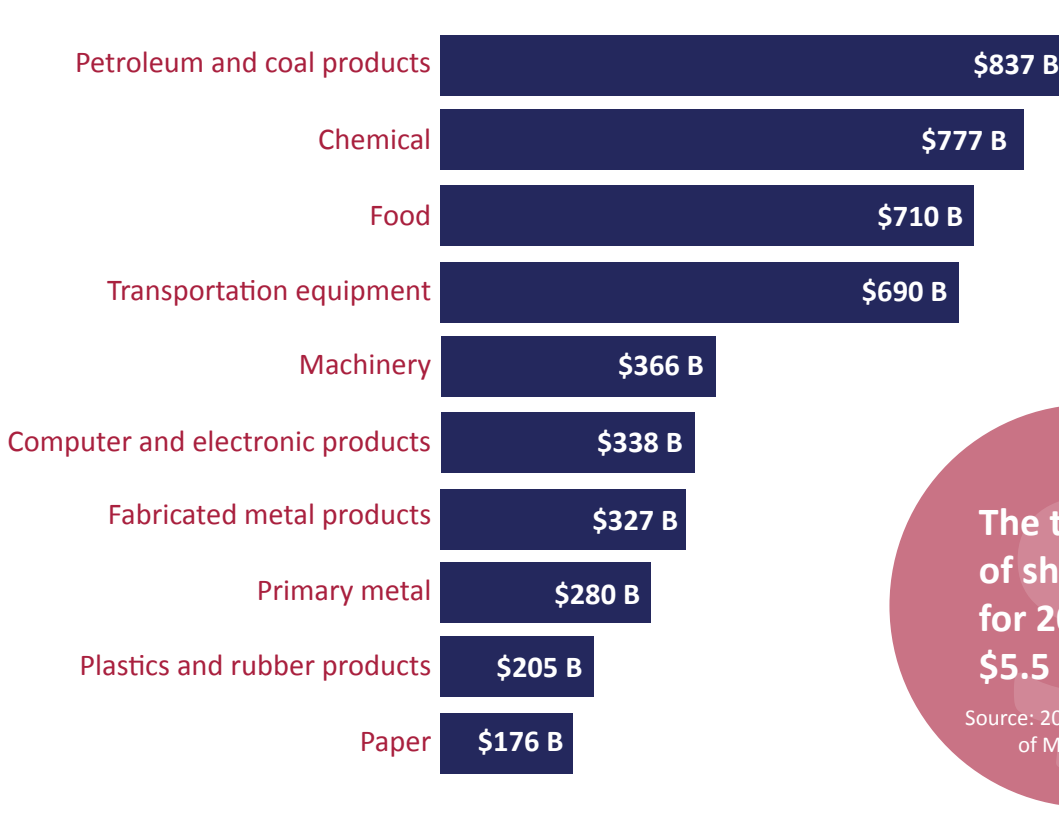
**Manufacturers spent \$3.2 trillion on materials and in addition spent \$147 billion on capital expenditures.**

Source: 2011 Annual Survey of Manufactures

### Which industries have the largest value of shipments?

#### Top 10 Industries by Value of Shipments

(Billions of Dollars)



Source: 2011 Annual Survey of Manufactures

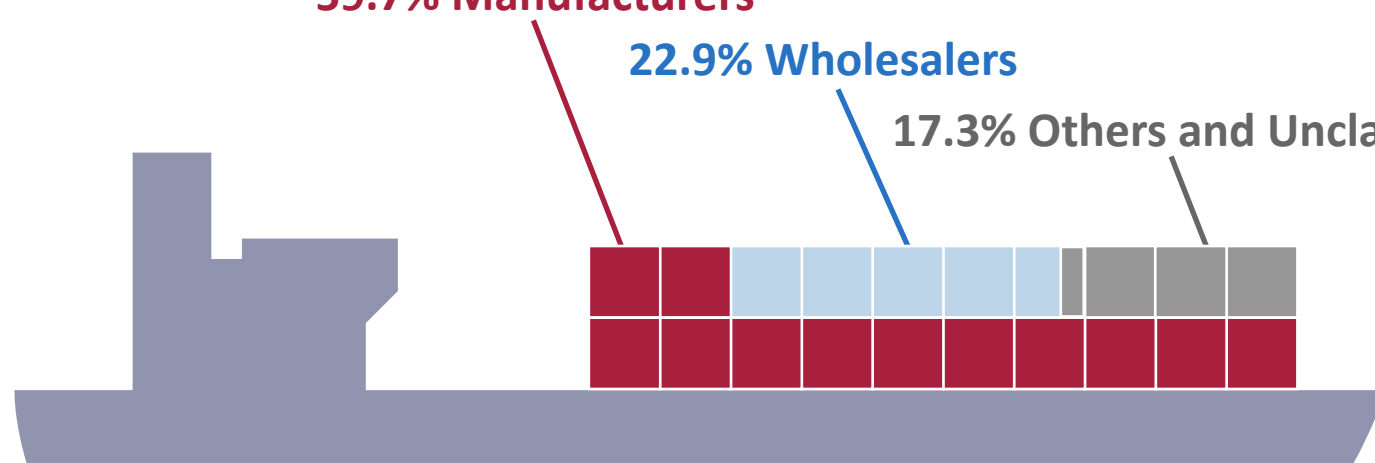
**The total value of shipments for 2011 was \$5.5 trillion.**

Source: 2011 Annual Survey of Manufactures

### How does manufacturing contribute to exports?

#### About 6 in 10 U.S. Export Dollars Come from Manufacturers\*

**59.7% Manufacturers**      **22.9% Wholesalers**      **17.3% Others and Unclassified**



\*Note: Graphic shows the known value of the portion of U.S. exports that could be matched to specific companies.

Source: A Profile of U.S. Importing and Exporting Companies, 2010-2011