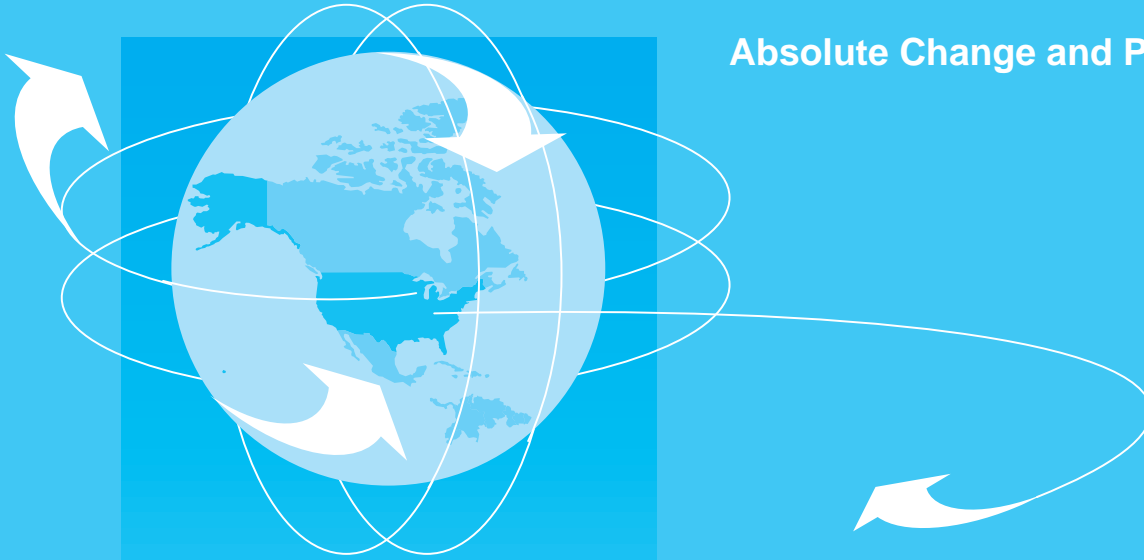


U.S. Department of Commerce
Economics and Statistics
Administration
BUREAU OF THE CENSUS

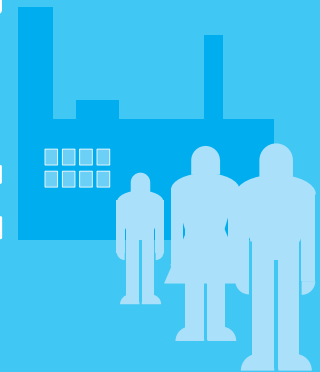
U.S. Department
of Labor
BUREAU OF LABOR
STATISTICS

4th
QUARTER
1995 and 1994
TM/95-Q4

**Absolute Change and Percent Change:
1995 and 1994**



Trade & Employment



Acknowledgments

James Kristoff directed the planning and management of the Trade and Employment quarterly report. **Rob Stites** coordinated the day-to-day activities, edited the final tables and figures, and prepared the introduction. **Christine Gray** was responsible for planning and performing all computer related tasks.

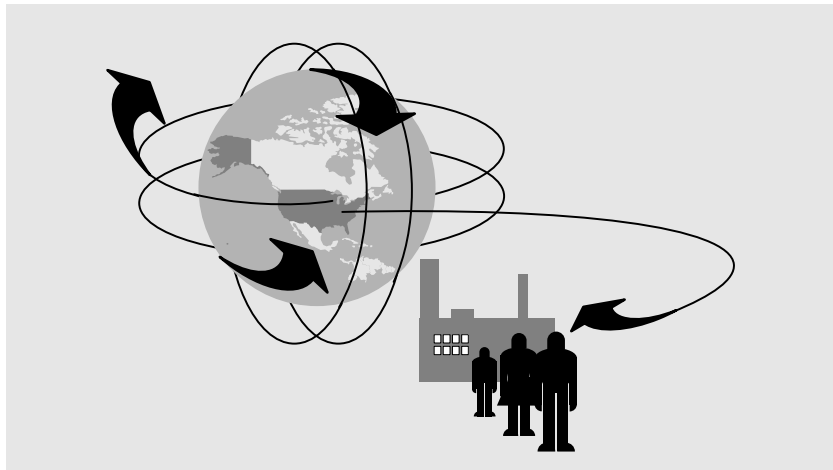
Trade data was provided by the Foreign Trade Division, Bureau of the Census, under the direction of **C. Harvey Monk**, Chief. Employment data was provided by the Bureau of Labor Statistics, Monthly Industry Employment Statistics Divisions Branch of National Estimates under the direction of **Lois M. Plunkert**.

The staff of Administrative and Customer Services Division, **Walter C. Odom**, Chief, provided publication planning, design, composition, editorial review, and printing planning and procurement. **Frances B. Scott** provided publication coordination and editing.

4th
QUARTER
1995 and 1994
TM/95-Q4

Trade & Employment

Absolute Change and Percent Change: 1995 and 1994



Issued April 1996



**U.S. Department of
Commerce**
Ronald H. Brown,
Secretary

**Economics
and Statistics
Administration**
Everett M. Ehrlich,
Under Secretary
for Economic Affairs

**BUREAU OF
THE CENSUS**
Martha Farnsworth Riche,
Director



**U.S. Department
of Labor**
Robert Reich
Secretary

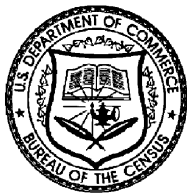
**BUREAU OF LABOR
STATISTICS**
Katharine G. Abraham
Commissioner



**Economics and Statistics
Administration**
Everett M. Ehrlich, Under Secretary
for Economic Affairs



BUREAU OF LABOR STATISTICS
Katharine G. Abraham, Commissioner
Thomas J. Plewes, Associate Commissioner for
Employment and Unemployment Statistics
**MONTHLY INDUSTRY EMPLOYMENT
STATISTICS DIVISION**
George S. Werking, Chief



BUREAU OF THE CENSUS
Martha Farnsworth Riche, Director
Bryant Benton, Deputy Director
Paula J. Schneider, Principal Associate
Director for Programs
Frederick T. Knickerbocker, Associate Director
for Economic Programs
Thomas L. Mesenbourg, Assistant Director for
Economic Programs
**ECONOMIC PLANNING AND COORDINATION
DIVISION**
John P. Govoni, Chief

For sale by Superintendent of Documents, U.S. Government Printing Office, Washington, DC 20402. Postage stamps not acceptable, currency submitted at sender's risk. Remittances from foreign countries must be by international money order or by a draft on a U.S. bank.

Contents

INTRODUCTION

Purpose and Scope.....	v
Tables	v
Figures.....	vi
Abbreviations and Symbols	vi

FIGURES

Third Quarter 1995 and 1994

1. Average Percent Change in Value of Top 20 SIC Import Commodity Groups: Third Quarter 1993, 1994, and 1995	vii
2. Average Percent Change in Exports for Selected Industries Based on Top 20 SIC Import Commodity Groups: Third Quarter 1993, 1994, and 1995	viii
3. Comparison of Comparable Import and Export SIC Commodity Groups: Third Quarter 1995	ix
4. Average Percent Change in Employment for Selected Industries Based on Top 20 SIC Import Commodity Groups: Third Quarter 1993, 1994, and 1995	x

TABLES

Third Quarter 1995 and 1994

1. Imports for Consumption by Two- and Four-Digit SIC-Based Commodity Groups in SIC Order.....	3
2. Import Commodity Groups Ranked by Increase of 25 Percent or More and \$5 Million or More in Value From Year-Ago Quarter.....	10
3. Import Commodity Groups Ranked by Increase of Less Than 25 Percent and \$20 Million or More in Value From Year-Ago Quarter.....	12
4. Import Commodity Groups With Increase of 25 Percent or More and at Least \$5 Million or More in Value From Year-Ago Quarter, or Increase of Less Than 25 Percent and \$20 Million or More in Value From Year-Ago Quarter in SIC Order	14
5. Domestic Exports by Two- and Four-Digit SIC-Based Commodity Groups in SIC Order.....	17
6. Domestic Export Commodity Groups Ranked by Increase of 25 Percent or More and \$5 Million or More in Value From Year-Ago Quarter	24
7. Domestic Export Commodity Groups Ranked by Increase of Less Than 25 Percent and \$20 Million or More in Value From Year-Ago Quarter.....	26
8. Domestic Export Commodity Groups With Increase of 25 Percent or More and at Least \$5 Million or More in Value From Year-Ago Quarter, or Increase of Less Than 25 Percent and \$20 Million or More in Value From Year-Ago Quarter in SIC Order	28
9. Imports for Consumption Compared to Domestic Exports by Four-Digit SIC-Based Commodity Groups in SIC Order	31
10. Nonagricultural Employment by Two-Digit SIC Division and Four-Digit Mining and Manufacturing Industries	37
11. Employment Change in Selected Mining and Manufacturing Industries	44

APPENDIXES

A.	Comparison of Domestic Output, Import, and Export Classifications	A-1
B.	Commodity Classification and Data Sources	B-1
C.	Comparability With Other Data	C-1
D.	Limitations and Analysis	D-1

Introduction

PURPOSE AND SCOPE

This is the forty-fifth and last publication in a series of quarterly reports that measures changes in U.S. imports, exports, and employment. Due to budgetary restraints, "Trade and Employment" is scheduled to be discontinued with this issue. For questions or comments contact Jim Kristoff at 301-457-2813.

The classification of commodities based on the 1987 SIC represents an organization of commodities into a structure related to origin of production. This arrangement facilitates the comparison of imports and exports with domestic employment, which is also reported based on the SIC. (See appendix B and C for more information.)

The 1987 edition of the SIC manual represents a major revision from the 1972 edition and its 1977 supplement. Appendix A of the 1987 manual notes the revisions in the four-digit industry levels between 1972/77 and 1987. The import and export data on a 1987 SIC basis were derived from a concordance between the 1987 Tariff Schedule of the United States Annotated (TSUSA) schedule and the 1989 ten-digit Harmonized System (HS) TSUSA schedule. A similar concordance was used for exports. The 1987 calendar year TSUSA and Schedule B were previously related to the 1987 SIC. These files along with the concordances described above were used to convert the HS schedules to a 1987 SIC basis. There are cases where data released since *Trade and Employment 1st Quarter 1990* (TM/ 90-Q1) differ from the same commodities shown in this publication. This is due to the following reasons:

- The conversion scheme used caused some inconsistencies in relating the HS system to the SIC-based codes. The HS system has more detail than both the TSUSA and Schedule B systems, thus creating differences in the data distribution;
- revision of the SIC system moved parts of some 1977 commodities into existing SIC codes;
- revisions made for the 1987 SIC.

The Trade Act of 1974, Section 282, provides that the Secretary of Commerce and the Secretary of Labor shall establish and maintain a trade monitoring system, which will reflect (a) changes in the volume of imports into the United States; (b) the relationship of such imports to changes in domestic production; (c) changes in employment within domestic industries producing articles like or

directly competitive with such imports; and (d) the extent to which such changes in domestic production and employment are adversely affected because of changing international trade patterns.

Trade and Employment is a joint effort of the Bureau of Labor Statistics and the Bureau of the Census. The Bureau of the Census produces the publication by combining the employment data provided by the Bureau of Labor Statistics (BLS) with the import and export data produced at the Bureau of the Census. The employment data reflect revised benchmark figures.

A detailed comparison of U.S. exports and imports to domestic production is available in *U.S. Commodity Exports and Imports as Related to Output*, published by the Bureau of the Census at the four-digit and five-digit levels. The last available issue is for 1993 and 1992. A further detailed comparison of exports and imports to domestic production at the seven-digit level is shown in the Current Industrial Reports, published by the Bureau of the Census. These reports are published monthly, quarterly, and annually, and are available from Customer Services at 301-457-4100.

TABLES

Table 1 shows the value of imports for consumption for the previous two calendar years; value of imports for consumption for the current quarter and year-ago quarter; changes in value between the current and year-ago quarter; and changes in percent between the current and year-ago quarter for two-digit and four-digit SIC-based commodity groups.

Table 2 ranks by percent the value of imports for consumption for four-digit commodity groups with an increase of 25 percent or more and \$5 million or more in value from the year-ago quarter, based on commodity groups shown in table 1.

Table 3 ranks by percent the value of imports for consumption for four-digit commodity groups with less than a 25 percent increase and \$20 million or more in value from the year-ago quarter, based on commodity groups shown in table 1.

Table 4 shows, in SIC order, the value of imports for consumption for four-digit commodity groups with an increase of 25 percent or more and at least \$5 million or more in value from the year-ago quarter, or an increase of less than 25 percent and \$20 million or more in value from the year-ago quarter. This is a combination of tables 2 and 3.

Table 5 shows, in SIC order, the value of domestic exports for the previous two calendar years; value of domestic exports for the current quarter and year-ago quarter; changes in value between the current and year-ago quarter; and changes in percent between the current and year-ago quarter for two-digit and four-digit SIC-based commodity groups.

Table 6 ranks by percent the value of domestic exports for four-digit commodity groups with an increase of 25 percent or more and \$5 million or more in value from the year-ago quarter, based on commodity groups shown in table 5.

Table 7 ranks by percent the value of domestic exports for four-digit commodity groups with less than a 25 percent increase and \$20 million or more in value from the year-ago quarter, based on commodity groups shown in table 5.

Table 8 shows, in SIC order, the value of domestic exports with an increase of 25 percent or more and at least \$5 million or more in value from the year-ago quarter, or an increase of less than 25 percent and \$20 million or more in value from the year-ago quarter. This is a combination of tables 6 and 7.

Table 9 shows a comparison of imports for consumption to domestic exports by four-digit SIC-based commodity groups for the previous year and current quarter. Additionally, the difference between imports and exports (imports minus exports) and the resulting difference as a percent of imports for each four-digit SIC based commodity group is presented. Only those SIC import and export commodity groups which are totally comparable are shown in this table.

Table 10 shows the number of employees for nonagricultural establishments by industry division and mining and manufacturing industries for the current year, prior year, present quarter, year-ago quarter, changes in employment between the current and year-ago quarter, changes in percent between the current and year-ago quarter. The employment totals for the first quarter publication reflect revised figures from the Bureau of Labor Statistics (BLS).

Table 11 shows, in SIC order, employment change in domestic mining and manufacturing industries based on import commodity groups with an increase of 25 percent or more and at least \$5 million or more in value from the year-ago quarter or an increase of less than 25 percent and \$20 million or more in value from the year-ago quarter.

FIGURES

Figure 1 shows the top 20 four-digit agricultural, mining, and/or manufacturing Standard Industrial Classification (SIC) import commodity groups with the highest average percent change over a three-quarter period. The three-quarter period covered includes third quarters 1993, 1994, and 1995. Only those import commodity groups valued at \$50 million or more in the most recent quarter with an average percent change greater than 20 percent were considered.

During this period, there were 83 import commodity groups that met these criteria. Eight (or 10 percent) of these import groups showed an average percent increase of at least 50 percent. Forty-four (or 53 percent) of these import groups showed an average increase between 25 and 50 percent. Thirty-one groups (or 37 percent) showed an average increase of less than 25 percent.

Figure 2 shows the average percent changes over the same three-quarter period for selected export commodity groups based on the import commodity groups in figure 1. There were 98 export commodity groups that met the criteria. Twenty-eight (or 29 percent) of these export groups showed an average *increase* greater than 25 percent.

Figure 3 shows a comparison of comparable import and export SIC commodity groups based on the top 20 SIC import commodity groups with the highest quarter values. In only four of these cases did the export value exceed the import value; industries 3714; 3592, motor vehicle parts and accessories; 2869 pt., industrial organic chemicals, n.e.c.; 3663, radio and television communication equipment; and 3724, 3764pt., aircraft engines and engine parts.

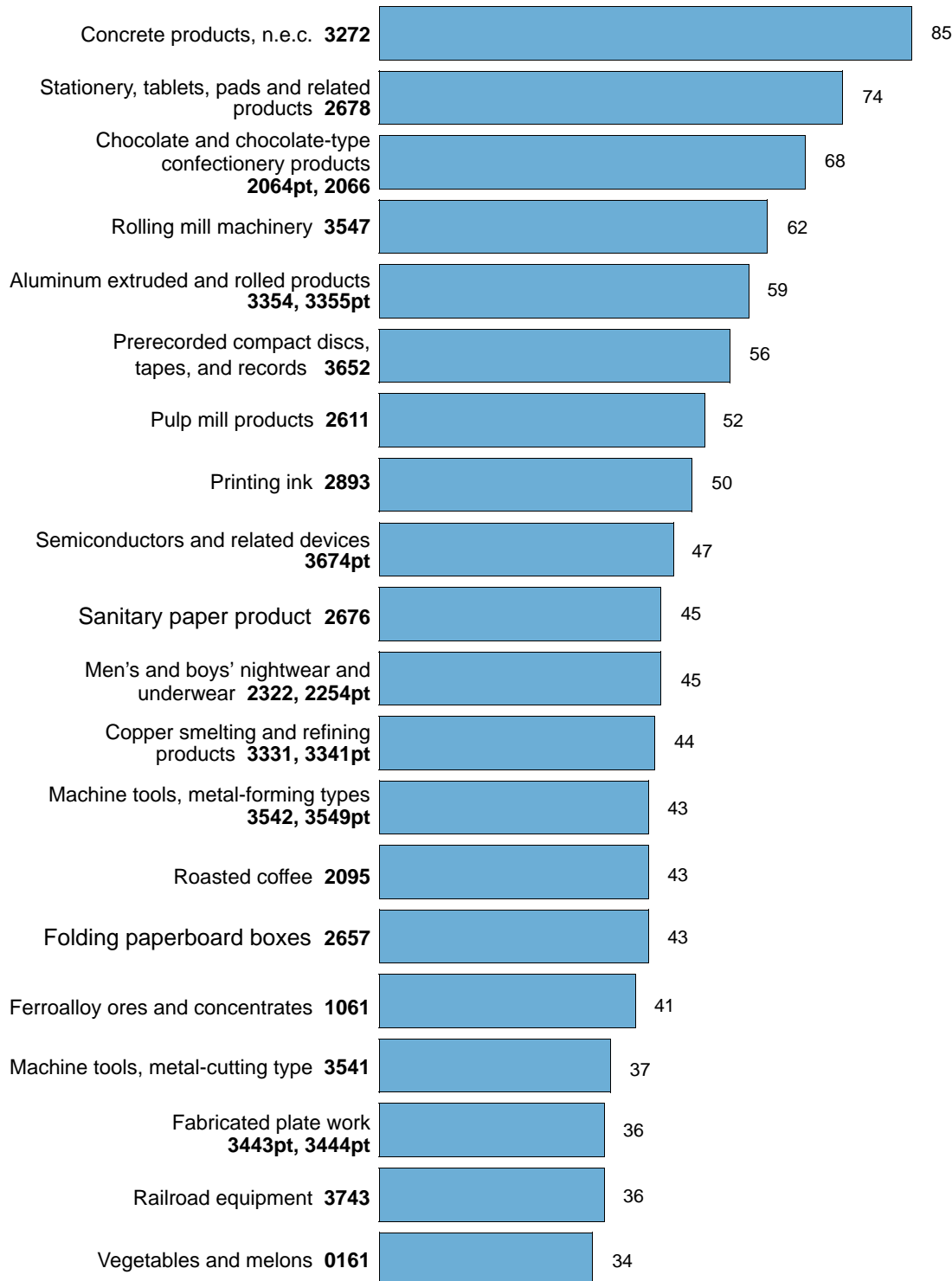
Figure 4 shows the average percent changes in employment over the same three-quarter period, for selected industries based on the import commodity groups in figure 1 and where the BLS employment data are available.

ABBREVIATIONS AND SYMBOLS

–	Represents zero or rounds to zero.
pt	Part of code data is located elsewhere.
(NA)	Not available.
n.e.c.	Not elsewhere classified.
(X)	Not applicable.
(Z)	Between \$-0.05 million and \$+ 0.05 million (or -0.5 and + 0.5 percent), but not equal to zero.

Figure 1.
**Average Percent Change in Value of Top 20 SIC Import Commodity
 Groups: Fourth Quarter 1993, 1994, and 1995**

Commodity Groups and SIC Codes



Note: Valued at \$50 million or more during 4th quarter 1995.

Figure 2.
**Average Percent Change in Exports for Selected Industries Based on Top 20 SIC
 Import Commodity Groups: Fourth Quarter 1993, 1994, and 1995**

Commodity Groups and SIC Codes

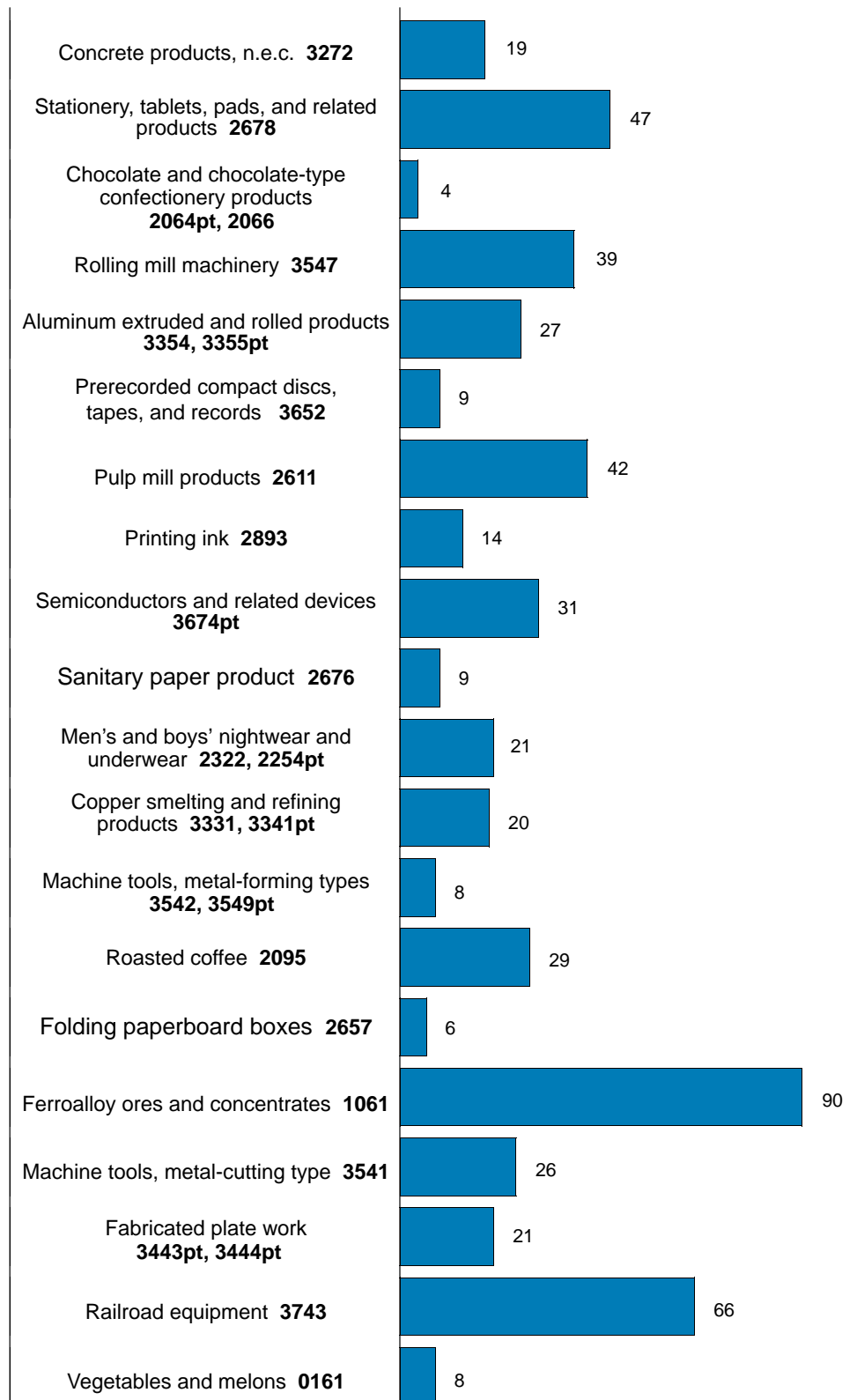
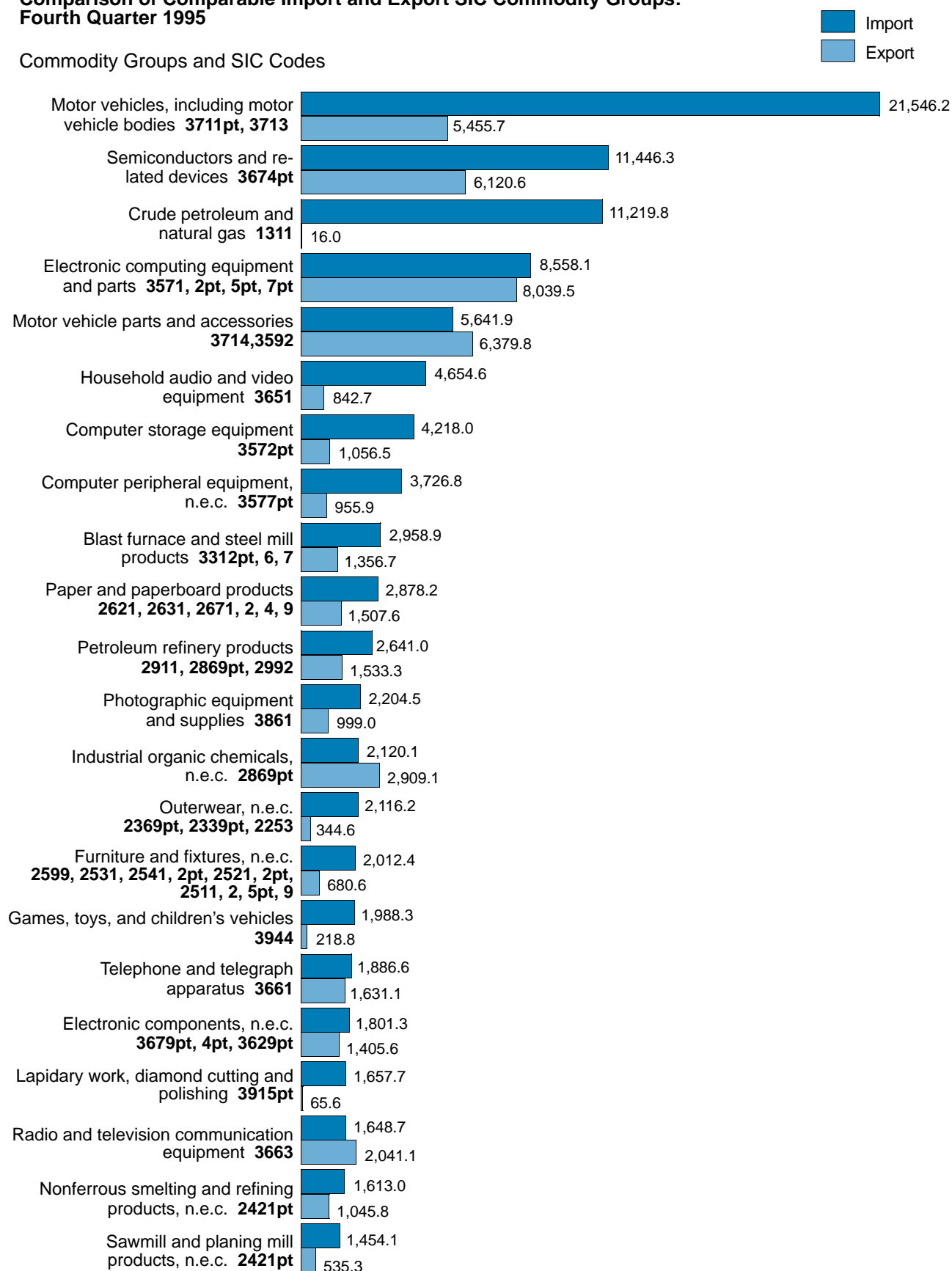


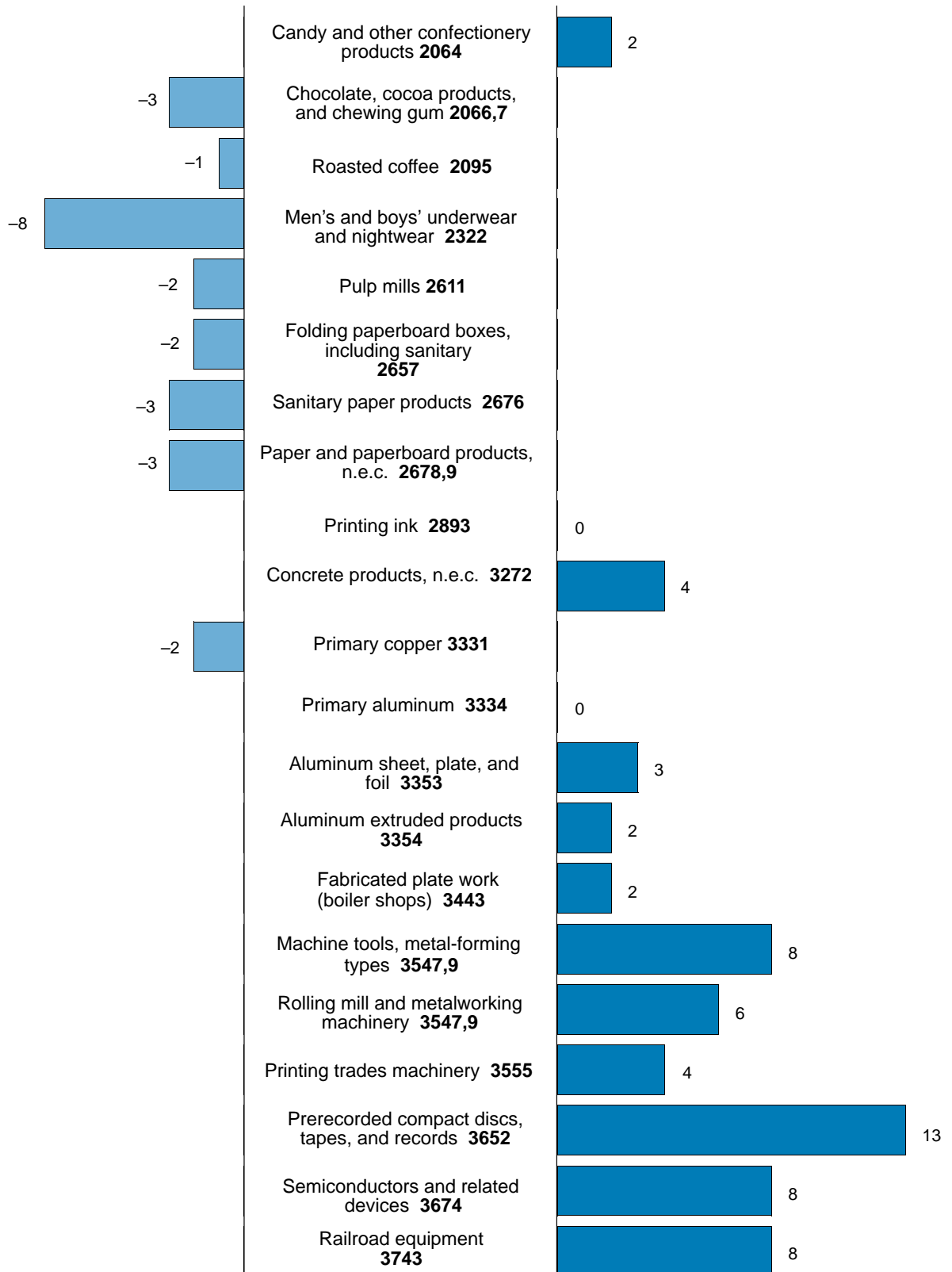
Figure 3.
**Comparison of Comparable Import and Export SIC Commodity Groups:
 Fourth Quarter 1995**



Note: Based on the top SIC import commodity groups with the highest quarter values. Values presented in millions of dollars.

Figure 4.
**Average Percent Change in Employment for Selected Industries
 Based on Top 20 SIC Import Commodity Groups: Fourth Quarter
 1993, 1994, and 1995**

Commodity Groups and SIC Codes



Note: Valued at \$50 million or more during 4th quarter 1995.

4th

QUARTER

1995 and 1994

TM/95-Q4

Trade & Employment

*Absolute Change and Percent Change:
1995 and 1994*

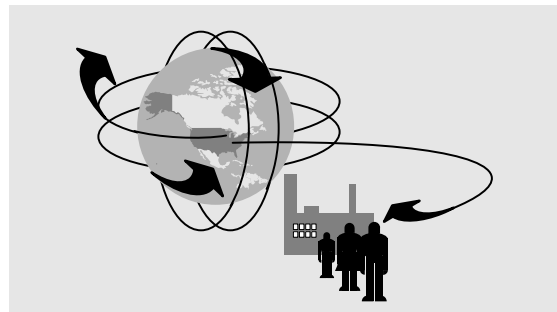


Table 1. Imports for Consumption by Two- and Four-Digit SIC-Based Commodity Groups in SIC Order—Con.

[Million dollars. For meaning of abbreviations and symbols, see introductory text]

SIC code	Industry	1995	1994	Fourth quarter		Quarter change between 1995 and 1994		Year change between 1995 and 1994	
				1995	1994	Value	Percent	Value	Percent
	Manufacturing—Con.								
37	Transportation equipment—Con.								
3724, 3764 pt.	Aircraft engines and engine parts	4 930.9	5 459.7	1 251.7	1 460.7	-209.0	-14	-528.8	-10
3728, 3769 pt.	Aircraft parts, including missile and space vehicle ..	2 552.0	2 506.6	598.0	611.7	-13.7	-2	45.4	2
3731	Ship building and repairing	31.3	12.8	3.5	2.3	1.2	52	18.5	145
3732	Boat building and repairing	825.2	576.7	228.2	162.8	65.4	40	248.5	43
3743	Railroad equipment	1 101.7	983.1	245.6	294.2	-48.6	-17	118.6	12
3751	Motorcycles, bicycles, and parts	2 201.4	1 825.2	629.3	554.2	75.1	14	376.2	21
3761	Missile and space vehicle systems, excluding propulsion6	(Z)	-	(Z)	-	(X)	(Z)	(X)
3764 pt.	Complete missile or space vehicle engine and/or propulsion units	(Z)	-	(Z)	-	-	(X)	-	(X)
3792, 3799 pt.	Transportation equipment, n.e.c.	318.7	275.1	92.7	92.3	(Z)	(X)	43.6	16
3795, 3711 pt.	Military tanks	47.1	55.0	14.6	9.4	5.2	55	-7.9	-14
3799 pt.	Travel trailers	7.7	14.5	1.7	8.3	-6.6	-80	-6.8	-47
38	Instruments and related products	27 810.6	24 736.0	7 288.7	6 815.7	473.0	7	3 074.6	12
3812	Aeronautical, nautical, and navigational instruments, including automatic pilots	896.4	783.6	238.0	199.4	38.6	19	112.8	14
3822	Automatic controls	302.5	294.8	84.1	72.9	11.2	15	7.7	3
3823	Process control instruments	2 024.7	1 678.9	519.0	469.6	49.4	11	345.8	21
3824, 3829 pt.	Fluid meters and counting devices	983.7	970.2	225.8	277.6	-51.8	-19	13.5	1
3825	Instruments to measure electricity	2 001.2	1 563.8	533.7	440.8	92.9	21	437.4	28
3826, 3821	Analytical and scientific instruments, including laboratory	1 142.3	1 007.9	329.8	294.4	35.4	12	134.4	13
3827 pt.	Optical instruments and lenses	1 388.3	1 163.1	368.7	329.5	39.2	12	225.2	19
3829 pt., 3827 pt.	Measuring and controlling devices, n.e.c.	725.1	606.5	189.7	163.8	25.9	16	118.6	20
3841	Surgical and medical instruments	1 708.5	1 502.4	480.5	406.8	73.7	18	206.1	14
3842	Surgical appliances and supplies	1 124.4	929.9	298.6	243.5	55.1	23	194.5	21
3843	Dental equipment and supplies	266.7	225.4	64.8	59.5	5.3	9	41.3	18
3844	Irradiation equipment	1 159.5	1 079.7	305.6	291.1	14.5	5	79.8	7
3845	Electromedical equipment	1 420.2	1 311.8	375.1	356.0	19.1	5	108.4	8
3851	Ophthalmic goods	1 452.4	1 247.5	369.9	320.4	49.5	15	204.9	16
3861	Photographic equipment and supplies	8 625.9	7 877.2	2 204.5	2 116.2	88.3	4	748.7	10
3873	Watches, clocks, and watchcases	2 589.0	2 493.5	700.9	774.4	-73.5	-9	95.5	4
39	Miscellaneous manufactures	29 774.4	27 824.8	8 418.3	8 096.1	322.2	4	1 949.6	7
3911, 5 pt.	Jewelry, precious metals and jeweler's findings and materials	3 744.7	3 585.5	1 206.5	1 171.9	34.6	3	159.2	4
3914	Silverware and plated ware	351.3	326.3	95.6	89.3	6.3	7	25.0	8
3915 pt.	Lapidary work including diamond cutting and polishing	6 715.6	6 482.3	1 657.7	1 656.8	.9	(Z)	233.3	4
3931	Musical instruments and parts	931.6	795.7	247.7	230.5	17.2	7	135.9	17
3942	Dolls and stuffed toy animals	2 693.4	2 335.1	850.7	761.6	89.1	12	358.3	15
3944	Games, toys, and children's vehicles	5 752.1	5 502.4	1 988.3	1 859.6	128.7	7	249.7	5
3949	Sporting and athletic goods, n.e.c.	3 623.0	3 330.5	946.7	966.4	-19.7	-2	292.5	9
3951	Pens and mechanical pencils	569.9	511.3	157.6	134.7	22.9	17	58.6	11
3952	Pens, pencils, office and art supplies	155.9	143.1	37.5	33.5	4.0	12	12.8	9
3953	Hand stamps, stencils, and other marking devices ..	54.3	42.5	14.7	10.5	4.2	40	11.8	28
3955	Carbon paper and inked ribbons	319.0	331.1	67.2	85.3	-18.1	-21	-12.1	-4
3961, 3915 pt.	Costume jewelry	624.3	689.8	161.0	164.9	-3.9	-2	-65.5	-9
3965	Needles, pins, and fasteners	342.8	331.9	77.6	94.9	-17.3	-18	10.9	3
3991	Brooms and brushes	432.2	365.7	110.0	103.0	7.0	7	66.5	18
3993	Signs and advertising display	49.6	45.2	12.1	12.2	-.1	-1	4.4	10
3996	Hard surface floor coverings	175.9	163.2	42.6	42.0	.6	1	12.7	8
3999	Manufacturing industries, n.e.c.	3 238.9	2 843.5	745.2	679.3	65.9	10	395.4	14
3X	Manufactures, unclassified	5 156.5	4 567.5	1 352.1	1 259.4	92.7	7	589.0	13
	Other divisions	24 363.7	21 884.2	6 670.7	5 978.8	691.9	12	2 479.5	11
9100	Scrap and waste	2 004.3	1 494.1	486.7	457.6	29.1	6	510.2	34
9200	Used or second hand merchandise	2 924.6	2 734.0	810.7	757.4	53.3	7	190.6	7
9800	Canadian goods returned and reimported articles to Canada	17 601.4	15 974.1	4 934.5	4 365.1	569.4	13	1 627.3	10
9900	Miscellaneous commodities, n.e.c.	1 833.4	1 682.0	438.8	398.7	40.1	10	151.4	9

Table 3. Import Commodity Groups With Increase of Less Than 25 Percent and \$20 Million or More in Value From Year-Ago Quarter

[Million dollars. Import commodity groups ranked by percent change. For meaning of abbreviations and symbols, see introductory text]

SIC code	Industry	Rank	1995	1994	Fourth quarter		Quarter change between 1995 and 1994		Year change between 1995 and 1994	
					1995	1994	Value	Percent	Value	Percent
3052, 3084 2752 pt., 4 pt., 9 pt., 2741 pt., 2782 pt.	Rubber and plastics hose and belting ----- Commercial and other miscellaneous printing materials -----	1 2	823.0 924.9	667.8 733.2	217.2 264.8	175.1 215.5	42.1 49.3	24 23	155.2 191.7	23 26
3842 2873 3676	Surgical appliances and supplies ----- Fertilizers ----- Electronic resistors -----	3 4 5	1 124.4 769.0 669.3	929.9 617.2 551.9	298.6 232.9 177.6	243.5 191.6 145.1	55.1 41.3 32.5	23 22 22	194.5 151.8 117.4	21 25 21
3511 3675 3825 3679 pt., 3674 pt., 3629 pt. 2082	Turbines and turbine generator sets ----- Electronic capacitors ----- Instruments to measure electricity ----- Electronic components, n.e.c. -----	6 7 8 9	816.8 1 230.7 2 001.2 6 610.5	830.3 938.1 1 563.8 5 339.7	209.1 310.5 533.7 1 801.3	172.5 256.7 440.8 1 498.9	36.6 53.8 92.9 302.4	21 21 21 20	-13.5 292.6 437.4 1 270.8	-2 31 28 24
2865 pt. 3532 3563 3812	Malt beverages ----- Cyclic crudes and intermediates ----- Mining machinery ----- Air and gas compressors -----	10 11 12 13	1 303.3 2 483.8 481.7 1 131.2	1 176.4 1 965.2 392.0 908.5	338.5 614.5 122.9 300.8	283.4 516.2 102.9 252.4	55.1 98.3 20.0 48.4	19 19 19 19	126.9 518.6 89.7 222.7	11 26 23 25
0831	Aeronautical, nautical, and navigational instruments, including automatic pilots ----- Forestry products, n.e.c. -----	14 15	896.4 2 013.3	783.6 1 284.8	238.0 425.3	199.4 361.4	38.6 63.9	19 18	112.8 728.5	14 57
2022, 6 pt. 2076 3548 3554 3612	Cheese, natural and processed, including cottage cheese ----- Vegetable oil mill products, n.e.c. ----- Welding apparatus, electric ----- Paper industries machinery ----- Transformers -----	16 17 18 19 20	582.7 1 351.6 675.6 993.0 831.2	521.9 1 099.9 543.0 911.9 602.1	190.9 351.2 173.5 259.3 195.7	161.9 296.8 147.4 219.8 166.4	29.0 54.4 26.1 39.5 29.3	18 18 18 18 18	60.8 251.7 132.6 81.1 229.1	12 23 24 9 38
3841 0181 2335 pt., 2361 pt. 3339 pt., 3341 pt. 3561	Surgical and medical instruments ----- Ornamental floriculture and nursery products ----- Women's and misses' dresses ----- Nonferrous smelting and refining products, n.e.c. ----- Pumps and pumping equipment -----	21 22 23 24 25	1 708.5 1 146.9 1 791.1 6 226.8 864.5	1 502.4 967.4 1 424.9 5 001.3 733.2	480.5 288.2 365.0 1 613.0 224.6	406.8 247.2 311.6 1 375.5 192.0	73.7 41.0 53.4 237.5 32.6	18 17 17 17 17	206.1 179.5 366.2 1 225.5 131.3	14 19 26 25 18
3951 2311, 2329 pt. 3546 3829 pt., 3827 pt. 2061, 2, 3	Pens and mechanical pencils ----- Men's and boys' suits and coats ----- Power driven hand tools ----- Measuring and controlling devices, n.e.c. ----- Sugar -----	26 27 28 29 30	569.9 1 282.6 1 108.5 725.1 847.9	511.3 987.4 971.4 606.5 753.7	157.6 289.7 289.5 189.7 151.8	134.7 249.2 250.1 163.8 131.8	22.9 40.5 39.4 25.9 20.0	17 16 16 16 15	58.6 295.2 137.1 118.6 94.2	11 30 14 20 12
2493 3021 3559 pt. 3625 3851	Reconstituted wood products ----- Rubber and plastics footwear ----- Special industry machinery, n.e.c. ----- Industrial controls and relays ----- Ophthalmic goods -----	31 32 33 34 35	1 027.4 3 412.7 3 429.7 2 551.3 1 452.4	883.9 3 175.6 2 642.3 2 138.6 2 475.5	282.9 791.5 810.7 652.1 369.9	246.8 687.0 705.5 568.9 320.4	36.1 104.5 105.2 83.2 49.5	15 15 15 15 15	143.5 237.1 787.4 412.7 204.9	16 7 30 19 16
3061, 9, 3089 pt. 3353 pt. 3496, 3357 pt., 3315 pt. 3579, 3578 pt. 3672	Fabricated rubber products, n.e.c. ----- Aluminum sheet, plate, and foil ----- Miscellaneous fabricated wire systems ----- Office machines, n.e.c. ----- Printed circuit boards -----	36 37 38 39 40	1 859.6 1 478.9 908.9 1 702.6 2 810.3	1 601.2 960.0 795.0 1 445.7 2 438.8	488.0 313.0 228.0 441.8 759.3	428.2 273.7 199.3 386.8 665.5	59.8 39.3 28.7 55.0 93.8	14 14 14 14 14	258.4 518.9 113.9 256.9 371.5	16 54 14 18 15
3751 2084 2273 2342 2869 pt.	Motorcycles, bicycles, and parts ----- Wines, brandy, and brandy spirits ----- Carpets and rugs ----- Brassieres and allied garments ----- Industrial organic chemicals, n.e.c. -----	41 42 43 44 45	2 201.4 1 490.5 887.6 927.3 8 845.3	1 825.2 1 351.7 777.4 744.6 7 091.4	629.3 518.4 202.2 238.0 2 120.1	554.2 459.1 178.2 210.5 1 881.9	75.1 59.3 24.0 27.5 238.2	14 13 13 13 13	376.2 138.8 110.2 182.7 1 753.9	21 10 14 25 25
3429 3562 3542, 9 pt. 3691 3826, 3821	Hardware, n.e.c. ----- Ball and roller bearings ----- Machine tools, metal-forming types ----- Storage batteries ----- Analytical and scientific instruments, including laboratory -----	46 47 48 49 50	1 734.4 1 420.7 1 315.3 1 400.5 1 142.3	1 605.9 1 201.5 1 032.3 1 187.1 1 007.9	464.5 358.0 328.2 383.5 329.8	412.0 317.9 294.1 343.4 294.4	52.5 40.1 34.1 40.1 35.4	13 13 12 12 12	128.5 219.2 89.0 213.4 134.4	8 18 27 18 13
3827 pt. 3942 3564, 3634 pt. 3648, 5, 6 3823	Optical instruments and lenses ----- Dolls and stuffed toy animals ----- Blowers and fans ----- Lighting fixtures and equipment, n.e.c. ----- Process control instruments -----	51 52 53 54 55	1 388.3 2 693.4 1 613.6 1 970.4 2 024.7	1 163.1 2 335.1 1 510.1 1 764.4 1 678.9	368.7 850.7 308.0 530.1 519.0	329.5 761.6 276.5 477.2 469.6	39.2 89.1 31.5 52.9 49.4	12 12 11 11 11	225.2 358.3 103.5 206.0 345.8	19 15 7 12 21
0912, 2092pt. 2033 pt. 3491, 2 pt., 4, 8 3639, 3589 pt. 3999	Finfish ----- Canned fruits and vegetables ----- Valves and pipe fittings ----- Household appliances, n.e.c. ----- Manufacturing industries, n.e.c. -----	56 57 58 59 60	2 450.0 1 176.3 3 088.9 1 198.3 3 238.9	1 977.8 1 106.2 2 737.0 1 069.5 2 843.5	573.8 281.9 782.3 312.1 745.2	522.8 256.0 709.1 284.0 679.3	51.0 25.9 73.2 28.1 65.9	10 10 10 10 10	472.2 70.1 351.9 128.8 395.4	24 6 13 12 14
2099, 2038, 2032 pt. 3356, 3357 pt.	Food preparations, n.e.c. ----- Mill products of nonferrous metals, n.e.c.: rolled, drawn, or extruded -----	61 62	1 108.8 1 016.6	972.9 1 015.2	300.4 256.3	275.7 235.6	24.7 20.7	9 9	135.9 1.4	14 -
3519 3569, 7 pt., 3559 pt., 3549 pt. 3641	Internal combustion engines, n.e.c. ----- General industrial machinery, n.e.c. ----- Electric lamps -----	63 64 65	2 848.4 3 227.6 994.7	2 383.1 2 857.4 862.3	679.0 820.8 245.8	625.4 752.6 224.6	53.6 68.2 21.2	9 9 9	465.3 370.2 132.4	20 13 15
2731 3081 3089 pt., 7, 6, 3 3699 pt. 2392, 2211 pt., 2221 pt., 2231 pt., 2259, 2297 pt.	Books ----- Unsupported plastics film and sheet ----- Other miscellaneous plastics and rubber products, n.e.c. ----- Electrical equipment, n.e.c. ----- Housefurnishings, except curtains and draperies -----	66 67 68 69 70	1 238.2 1 550.0 4 790.7 2 722.1 1 693.0	1 060.5 1 328.8 4 174.9 2 299.1 1 534.0	322.3 382.1 1 217.6 676.9 377.4	299.7 354.5 1 129.8 627.7 351.7	22.6 27.6 87.8 49.2 25.7	8 8 8 8 7	177.7 221.2 615.8 423.0 159.0	17 17 15 18 10

Table 3. **Import Commodity Groups With Increase of Less Than 25 Percent and \$20 Million or More in Value From Year-Ago Quarter—Con.**

[Million dollars. Import commodity groups ranked by percent change. For meaning of abbreviations and symbols, see introductory text]

SIC code	Industry	Rank	1995	1994	Fourth quarter		Quarter change between 1995 and 1994		Year change between 1995 and 1994	
					1995	1994	Value	Percent	Value	Percent
2599, 2541, 2 pt., 2531, 2521, 2 pt., 2511, 2, 5 pt., 9	Furniture and fixtures, n.e.c. -----	71	7 577.4	6 879.8	2 012.5	1 885.4	127.1	7	697.6	10
2834	Pharmaceutical preparations -----	72	2 903.6	2 544.7	744.8	698.5	46.3	7	358.9	14
3499, 3462, 3, 9 pt., 3451, 3442 pt., 3364, 6, 9, 3312 pt.	Miscellaneous fabricated metal products -----	73	2 866.7	2 567.2	725.8	679.0	46.8	7	299.5	12
3944	Games, toys, and children's vehicles -----	74	5 752.1	5 502.4	1 988.3	1 859.6	128.7	7	249.7	5
2337, 2369 pt.	Women's and misses' coats, jackets, suits, skirts, and vests -----	75	2 973.4	2 823.0	661.7	625.7	36.0	6	150.4	5
3575 pt., 7 pt.	Computer peripheral equipment, n.e.c. -----	76	12 975.8	11 731.0	3 726.9	3 508.5	218.4	6	1 244.8	11
1321	Natural gas liquids -----	77	3 423.2	2 750.9	878.0	838.6	39.4	5	672.3	24
2325, 6 pt.	Men's and boys' separate trousers, jeans, and work clothing except work shirts -----	78	3 916.6	3 267.1	915.8	874.6	41.2	5	649.5	20
2341, 2254 pt.	Women's, misses', and children's nightwear and underwear -----	79	1 606.9	1 405.2	434.1	413.6	20.5	5	201.7	14
2499	Wood products, n.e.c. -----	80	1 641.1	1 450.4	406.2	385.4	20.8	5	190.7	13
3661	Telephone and telegraph apparatus -----	81	6 929.4	6 761.1	1 886.6	1 794.3	92.3	5	168.3	2
2819, 2842 pt.	Industrial inorganic chemicals, n.e.c. -----	82	5 717.4	4 807.0	1 414.0	1 355.9	58.1	4	910.4	19
3861	Photographic equipment and supplies -----	83	8 625.9	7 877.2	2 204.5	2 116.2	88.3	4	748.7	10
2821	Plastics materials and resins -----	84	4 278.8	3 438.2	1 001.1	976.6	24.5	3	840.6	24
3144	Women's footwear, except athletic and slippers -----	85	3 943.4	3 793.3	902.8	880.1	22.7	3	150.1	4
3621	Motors and generators -----	86	3 260.1	2 938.3	797.0	770.1	26.9	3	321.8	11
3911, 5 pt.	Jewelry, precious metals and jeweler's findings and materials -----	87	3 744.7	3 585.5	1 206.5	1 171.9	34.6	3	159.2	4

Table 4. **Import Commodity Groups With Increase of 25 Percent or More and at Least \$5 Million or More in Value From Year-Ago Quarter, or Increase of Less Than 25 Percent and \$20 Million or More in Value From Year-Ago Quarter—Con.**

[Million dollars. For meaning of abbreviations and symbols, see introductory text]

SIC code	Industry	1995	1994	Fourth quarter		Quarter change between 1995 and 1994		Year change between 1995 and 1994	
				1995	1994	Value	Percent	Value	Percent
3841	Surgical and medical instruments	1 708.5	1 502.4	480.5	406.8	73.7	18	206.1	14
3842	Surgical appliances and supplies	1 124.4	929.9	298.6	243.5	55.1	23	194.5	21
3851	Ophthalmic goods	1 452.4	1 247.5	369.9	320.4	49.5	15	204.9	16
3861	Photographic equipment and supplies	8 625.9	7 877.2	2 204.5	2 116.2	88.3	4	748.7	10
3911, 5 pt.	Jewelry, precious metals and jeweler's findings and materials	3 744.7	3 585.5	1 206.5	1 171.9	34.6	3	159.2	4
3942	Dolls and stuffed toy animals	2 693.4	2 335.1	850.7	761.6	89.1	12	358.3	15
3944	Games, toys, and children's vehicles	5 752.1	5 502.4	1 988.3	1 859.6	128.7	7	249.7	5
3951	Pens and mechanical pencils	569.9	511.3	157.6	134.7	22.9	17	58.6	11
3999	Manufacturing industries, n.e.c.	3 238.9	2 843.5	745.2	679.3	65.9	10	395.4	14

Table 5. Domestic Exports by Two- and Four-Digit SIC-Based Commodity Groups in SIC Order—Con.

[Million dollars. For meaning of abbreviations and symbols, see introductory text]

SIC code	Industry			Fourth quarter		Quarter change between 1995 and 1994		Year change between 1995 and 1994	
		1995	1994	1995	1994	Value	Percent	Value	Percent
	Manufacturing—Con.								
37	Transportation equipment—Con.								
3724, 3764 pt.	Aircraft engines and engine parts	6 130.2	6 451.1	1 659.9	1 613.8	46.1	3	-320.9	-5
3728, 3769 pt.	Aircraft parts, including missile and space vehicle ..	10 069.7	9 472.3	2 729.7	2 534.6	195.1	8	597.4	6
3731	Ship building and repairing	483.3	594.5	134.7	59.8	74.9	125	-111.2	-19
3732	Boat building and repairing	657.8	507.2	136.7	113.3	23.4	21	150.6	30
3743	Railroad equipment	755.2	601.0	227.1	214.8	12.3	6	154.2	26
3751	Motorcycles, bicycles, and parts	850.2	711.1	229.6	197.3	32.3	16	139.1	20
3761	Missile and space vehicle systems, excluding propulsion	15.5	24.4	7.0	6.2	.8	13	-8.9	-36
3764 pt.	Complete missile or space vehicle engine and/or propulsion units	40.1	1.6	29.5	(Z)	29.4	(X)	38.5	2 406
3792, 3799 pt.	Transportation equipment, n.e.c.	461.0	379.7	111.8	102.5	9.3	9	81.3	21
3795, 3711 pt.	Military tanks	1 609.1	1 671.6	422.0	506.1	-84.1	-17	-62.5	-4
3799 pt.	Travel trailers	86.0	72.8	13.9	14.4	-5	-3	13.2	18
38	Instruments and related products	29 556.9	26 535.8	7 827.9	6 910.2	917.7	13	3 021.1	11
3812	Aeronautical, nautical, and navigational instruments, including automatic pilots	1 860.2	1 957.8	550.4	470.2	80.2	17	-97.6	-5
3822	Automatic controls	210.4	183.7	53.3	46.6	6.7	14	26.7	15
3823	Process control instruments	2 869.4	2 666.0	664.0	742.2	-78.2	-11	203.4	8
3824, 3829 pt.	Fluid meters and counting devices	406.0	426.9	90.7	124.1	-33.4	-27	-20.9	-5
3825	Instruments to measure electricity	4 165.8	3 387.9	1 193.2	937.4	255.8	27	777.9	23
3826, 3821	Analytical and scientific instruments, including laboratory	2 522.9	2 223.2	707.3	576.9	130.4	23	299.7	13
3827 pt.	Optical instruments and lenses	1 038.3	884.9	285.7	216.9	68.8	32	153.4	17
3829 pt., 3827 pt.	Measuring and controlling devices, n.e.c.	1 826.9	1 666.0	508.1	432.5	75.6	17	160.9	10
3841	Surgical and medical instruments	2 784.2	2 467.2	733.0	605.1	127.9	21	317.0	13
3842	Surgical appliances and supplies	2 194.0	1 968.3	547.8	499.0	48.8	10	225.7	11
3843	Dental equipment and supplies	573.7	512.2	148.5	134.7	13.8	10	61.5	12
3844	Irradiation equipment	1 157.9	965.9	297.8	263.0	34.8	13	192.0	20
3845	Electromedical equipment	3 092.4	2 820.1	846.0	749.1	96.9	13	272.3	10
3851	Ophthalmic goods	593.2	500.6	152.0	128.6	23.4	18	92.6	18
3861	Photographic equipment and supplies	4 081.9	3 705.0	999.0	924.1	74.9	8	376.9	10
3873	Watches, clocks, and watchcases	179.6	200.3	51.1	59.7	-8.6	-14	-20.7	-10
39	Miscellaneous manufactures	6 468.5	5 836.7	1 725.2	1 599.0	126.2	8	631.8	11
3911, 5 pt.	Jewelry, precious metals and jeweler's findings and materials	402.9	403.8	111.8	104.8	7.0	7	-9	(Z)
3914	Silverware and plated ware	89.9	57.0	23.0	21.0	2.0	10	32.9	58
3915 pt.	Lapidary work including diamond cutting and polishing	275.1	276.0	65.6	80.7	-15.1	-19	-9	(Z)
3931	Musical instruments and parts	398.6	372.2	100.7	103.0	-2.3	-2	26.4	7
3942	Dolls and stuffed toy animals	99.0	89.6	27.9	33.3	-5.4	-16	9.4	10
3944	Games, toys, and children's vehicles	782.5	753.8	218.8	253.6	-34.8	-14	28.7	4
3949	Sporting and athletic goods, n.e.c.	2 212.6	1 788.8	588.4	464.3	124.1	27	423.8	24
3951	Pens and mechanical pencils	227.5	200.4	66.0	55.0	11.0	20	27.1	14
3952	Pens, pencils, office and art supplies	62.0	61.7	15.0	16.4	-1.4	-9	(Z)	(X)
3953	Hand stamps, stencils, and other marking devices ..	9.8	9.8	2.5	2.8	-3	-11	-	(X)
3955	Carbon paper and inked ribbons	356.4	320.6	93.0	91.5	1.5	2	35.8	11
3961, 3915 pt.	Costume jewelry	128.2	129.6	37.8	32.7	5.1	16	-1.4	-1
3965	Needles, pins, and fasteners	150.9	159.1	37.9	40.5	-2.6	-6	-8.2	-5
3991	Brooms and brushes	132.1	128.1	35.1	33.2	1.9	6	4.0	3
3993	Signs and advertising display	67.0	59.6	18.3	17.0	1.3	8	7.4	12
3996	Hard surface floor coverings	106.3	115.3	24.2	26.7	-2.5	-9	-9.0	-8
3999	Manufacturing industries, n.e.c.	967.9	911.3	259.2	222.6	36.6	16	56.6	6
3X	Manufactures, unclassified	14 047.7	12 926.5	3 767.0	3 484.3	282.7	8	1 121.2	9
	Other divisions	10 404.3	8 820.3	2 368.9	2 352.6	16.3	1	1 584.0	18
9100	Scrap and waste	6 232.5	4 285.6	1 331.6	1 262.0	69.6	6	1 946.9	45
9200	Used or second hand merchandise	1 572.1	1 736.5	390.4	421.1	-30.7	-7	-164.4	-9
9800	Canadian goods returned and reimported articles to Canada	327.5	350.1	89.9	86.0	3.9	5	-22.6	-6
9900	Miscellaneous commodities, n.e.c.	2 272.2	2 448.1	557.1	583.5	-26.4	-5	-175.9	-7

Table 7. **Domestic Export Commodity Groups With Increase of Less Than 25 Percent and \$20 Million or More in Value From Year-Ago Quarter—Con.**

[Million dollars. Export commodity groups ranked by percent change. For meaning of abbreviations and symbols, see introductory text]

SIC code	Industry	Rank	1995	1994	Fourth quarter		Quarter change between 1995 and 1994		Year change between 1995 and 1994	
					1995	1994	Value	Percent	Value	Percent
2844	Toilet preparations	71	1 887.2	1 733.1	485.3	457.3	28.0	6	154.1	9
2899 pt.	Chemical preparations, n.e.c.	72	2 426.4	2 095.9	581.0	546.4	34.6	6	330.5	16
2879, 2869 pt.	Agricultural chemicals, n.e.c.	73	2 223.2	1 938.9	484.3	460.6	23.7	5	284.3	15
3575 pt., 7 pt.	Computer peripheral equipment, n.e.c.	74	3 642.4	3 415.5	955.9	925.0	30.9	3	226.9	7
3724, 3764 pt.	Aircraft engines and engine parts	75	6 130.2	6 451.1	1 659.9	1 613.8	46.1	3	-320.9	-5

Table 8. **Domestic Export Commodity Groups With Increase of 25 Percent or More and at Least \$5 Million or More in Value From Year-Ago Quarter, or Increase of Less Than 25 Percent and \$20 Million or More in Value From Year-Ago Quarter in SIC Order—**
Con.

[Million dollars. For meaning of abbreviations and symbols, see introductory text]

SIC code	Industry	1995	1994	Fourth quarter		Quarter change between 1995 and 1994		Year change between 1995 and 1994	
				1995	1994	Value	Percent	Value	Percent
3861	Photographic equipment and supplies-----	4 081.9	3 705.0	999.0	924.1	74.9	8	376.9	10
3949	Sporting and athletic goods, n.e.c.-----	2 212.6	1 788.8	588.4	464.3	124.1	27	423.8	24
3999	Manufacturing industries, n.e.c. -----	967.9	911.3	259.2	222.6	36.6	16	56.6	6

Table 9. Imports for Consumption Compared to Domestic Exports by Four-Digit SIC-Based Commodity Groups in SIC-Order—Con.

[Million dollars. For meaning of abbreviations and symbols, see introductory text. Only those commodity groups that are totally comparable are included in this table]

SIC code	Industry	1994		Fourth quarter, 1995		Quarter comparison	
		Imports	Exports	Imports	Exports	Value	Percent
2084	Wines, brandy, and brandy spirits	1 351.7	201.3	518.4	73.6	444.8	85
2085	Distilled liquors, except brandy	1 380.7	390.5	411.2	161.8	249.4	60
2086 pt.	Bottled and canned soft drinks	366.9	325.4	72.4	51.0	21.4	29
2087, 2086 pt.	Flavoring extracts and sirups, n.e.c.	62.3	460.0	9.3	88.6	-79.3	-852
2091	Canned and cured seafoods	799.4	378.5	202.1	86.8	115.3	57
2095	Roasted coffee	224.2	142.2	79.8	53.3	26.5	33
2096	Chips (potato, corn, etc.)	26.1	251.6	7.0	61.8	-54.8	-782
2097	Manufactured ice	17.3	8.4	2.6	1.3	1.3	50
2098	Macaroni and spaghetti	222.8	7.8	68.2	8.1	60.1	88
2099, 2038, 2032 pt.	Food preparations, n.e.c.	972.9	1 178.6	300.4	287.9	12.5	4
2111	Cigarettes	74.5	4 966.2	9.0	1 257.4	-1 248.4	-13 871
2121	Cigars	64.2	7.0	30.8	1.9	28.9	93
2131	Chewing and smoking tobacco and snuff	27.0	326.2	5.5	85.3	-79.8	-1 450
2141 pt.	Tobacco, stemmed and redried (see code 0132)4	67.9	-	30.3	-30.3	(X)
2211 pt., 2261 pt.	Cotton broadwoven fabrics	1 552.0	704.5	350.0	206.0	144.0	41
2221 pt., 2262 pt.	Manmade fiber and silk broadwoven fabrics	1 658.4	1 048.7	389.8	266.3	123.5	31
2231 pt.	Wool fabrics and felts	252.1	87.2	60.1	25.2	34.9	58
2241	Narrow fabrics	274.5	344.4	68.6	98.4	-29.8	-43
2251, 2	Hosiery, n.e.c.	297.7	220.9	95.5	60.3	35.2	36
2257, 8 pt.	Circular knit fabrics	352.4	343.5	85.3	111.4	-26.1	-30
2258 pt.	Lace and net goods	19.3	56.5	4.6	14.7	-10.1	-219
2273	Carpets and rugs	777.4	666.9	202.2	167.8	34.4	17
2281, 2231 pt.	Yarns—cotton, manmade fibers, and silk	406.9	209.4	97.0	79.2	17.8	18
2284	Thread	49.9	81.6	14.8	25.3	-10.5	-70
2295	Coated fabrics, except rubberized	207.5	446.6	57.0	127.3	-70.3	-123
2296	Tire cord and tire fabrics	189.5	170.1	61.1	34.1	27.0	44
2297 pt.	Nonwoven fabrics	210.5	398.0	54.7	110.5	-55.8	-102
2298	Cordage and twine	185.5	49.8	55.1	13.4	41.7	75
2299	Textile goods, n.e.c.	421.4	322.8	105.9	80.1	25.8	24
2311, 2329 pt.	Men's and boys' suits and coats	987.4	292.5	289.7	70.9	218.8	75
2321, 6 pt., 2253 pt.	Men's and boys' shirts	5 198.1	690.7	1 409.2	194.2	1 215.0	86
2322, 2254 pt.	Men's and boys' nightwear and underwear	674.7	361.2	293.1	120.2	172.9	58
2323	Men's and boys' neckwear	161.5	17.9	50.4	4.8	45.6	90
2325, 6 pt.	Men's and boys' separate trousers, jeans, and work clothing except work shirts	3 267.1	1 004.9	915.8	241.5	674.3	73
2329 pt., 2253 pt.	Men's and boys' outerwear, n.e.c.	2 778.0	124.7	568.9	49.9	519.0	91
2331, 2361 pt., 2253 pt.	Women's, misses' and juniors blouses and shirts	4 188.7	242.7	844.2	78.1	766.1	90
2335 pt., 2361 pt.	Women's and misses' dresses	1 424.8	103.3	365.0	33.2	331.8	90
2337, 2369 pt.	Women's and misses' coats, jackets, suits, skirts, and vests	2 823.0	244.7	661.7	59.6	602.1	90
2339 pt.	Women's, misses', and juniors' bathing suits	132.9	24.4	39.7	10.4	29.3	73
2341, 2254 pt.	Women's, misses', and children's nightwear and underwear	1 405.2	222.2	434.1	67.6	366.5	84
2342	Brassieres and allied garments	744.6	298.6	238.0	99.3	138.7	58
2353	Hats and caps, including millinery	716.1	61.5	165.9	14.6	151.3	91
2369 pt, 2339 pt., 2253 pt.	Outerwear, n.e.c.	9 401.7	920.3	2 116.2	344.6	1 771.6	83
2371	Fur goods	194.4	61.4	59.6	19.1	40.5	67
2381 pt.	Gloves, n.e.c.	201.3	15.5	53.0	5.5	47.5	89
2384	Robes and dressing gowns	259.6	15.9	72.2	3.2	69.0	95
2385 pt.	Raincoats, incl. waterproof outer garments	779.5	110.1	183.8	33.2	150.6	81
2386	Leather and sheep-lined clothing	1 291.0	64.9	273.7	29.4	244.3	89
2387, 2389	Apparel and accessories, n.e.c.	331.0	160.8	70.4	39.9	30.5	43
2391	Curtains and draperies	114.9	22.6	23.9	5.6	18.3	76
2392, 2211 pt., 2221 pt., 2231 pt., 2259, 2297 pt.	Housefurnishings, except curtains and draperies	1 534.0	338.9	377.4	89.5	287.9	76
2393	Textile bags, except laundry, wardrobe, and shoe	56.7	22.3	21.4	5.4	16.0	74
2394	Canvas products	209.6	37.1	35.4	4.7	30.7	86
2395 pt., 2397	Embroideries, trimmings, and findings	97.7	24.7	24.8	5.8	19.0	76
2396	Automotive and apparel trimmings	27.3	156.1	8.6	63.9	-55.3	-643
2399	Fabricated textile products, n.e.c.	1 538.3	504.8	344.3	137.6	206.7	60
2411, 2421 pt.	Logs, bolts, and pulpwood	2 289.8	2 915.1	90.0	721.5	-631.5	-701
2421 pt.	Sawmill and planing mill products, n.e.c.	6 388.6	2 428.2	1 454.1	535.3	918.8	63
2426	Hardwood dimension stock and flooring	68.2	64.2	13.6	12.7	.9	6
2429	Shingles, shakes, and cooperage stock, n.e.c.	176.2	9.6	42.4	2.5	39.9	94
2431	Wood millwork products	490.9	242.2	120.0	54.5	65.5	54
2434	Wood kitchen cabinets	132.0	26.9	46.9	4.7	42.2	89
2435	Hardwood veneer and plywood	973.9	347.8	271.0	98.6	172.4	63
2436	Softwood veneer and plywood	102.1	322.9	25.9	99.2	-73.3	-283
2439	Fabricated structural wood products	136.1	144.7	34.8	48.7	-13.9	-39
2448	Pallets and skids	3.8	28.4	1.4	4.9	-3.5	-250
2449, 2411	Nailed wood boxes and shooks and wood containers, n.e.c. ..	54.0	31.3	10.5	10.6	-1	(Z)
2451	Mobile homes	1.1	13.1	.1	2.9	-2.8	-2 800
2452	Prefabricated wood buildings and components	22.2	74.3	7.5	20.2	-12.7	-169
2491 pt.	Wood, preserved	42.1	61.9	13.8	13.3	.5	3
2493	Reconstituted wood products	883.9	291.7	282.9	70.0	212.9	75
2499	Wood products, n.e.c.	1 450.4	249.9	406.2	64.5	341.7	84
2514	Metal household furniture	608.0	55.3	167.7	12.9	154.8	92
2515 pt.	Mattresses and bedsprings, convertible sofas, etc.	33.0	44.1	16.5	13.5	3.0	18
2517	Wood TV and radio cabinets, incl. sewing machine	3.9	2.1	1.9	.3	1.6	84

Table 9. Imports for Consumption Compared to Domestic Exports by Four-Digit SIC-Based Commodity Groups in SIC-Order—Con.

[Million dollars. For meaning of abbreviations and symbols, see introductory text. Only those commodity groups that are totally comparable are included in this table]

SIC code	Industry	1994		Fourth quarter, 1995		Quarter comparison	
		Imports	Exports	Imports	Exports	Value	Percent
2522 pt.	Office storage units, files, desks, etc., except wood	9.7	6.0	4.4	1.6	2.8	63
2542 pt.	Metal partitions and fixtures	176.2	191.5	50.0	36.5	13.5	27
2591	Shades, blinds, hardware, and accessories, n.e.c.	320.9	55.4	71.5	8.9	62.6	87
2599, 2541, 2 pt., 2531, 2521, 2 pt., 2511, 2, 5 pt., 9	Furniture and fixtures, n.e.c.	6 879.8	2 676.1	2 012.4	680.6	1 331.8	66
2611	Pulp mill products	2 420.8	2 954.3	1 044.8	1 105.6	-60.8	-5
2621, 2631, 2671, 2 pt., 4, 9 pt.	Paper and paperboard products	7 823.1	4 813.1	2 878.2	1 507.6	1 370.6	47
2652	Set-up paperboard boxes	18.3	38.8	7.8	13.1	-5.3	-67
2653	Corrugated and solid fiber boxes	109.9	532.6	34.8	184.7	-149.9	-430
2655	Fiber cans, drums, and related materials	2.9	30.9	1.0	8.4	-7.4	-740
2656	Sanitary food containers	23.8	115.5	10.0	41.6	-31.6	-316
2657	Folding paperboard boxes	207.2	192.0	79.4	55.5	23.9	30
2672 pt.	Gummed and pressure-sensitive products	345.9	853.7	111.3	244.8	-133.5	-119
2673, 4 pt.	Specialty bags and liners, including grocers	491.8	251.4	166.0	78.6	87.4	52
2674 pt.	Shipping sacks and multiwall bags, except textiles	15.0	22.7	5.3	8.3	-3.0	-56
2675, 9 pt.	Die-cut paper, and board products and other miscellaneous office supplies	292.4	237.2	77.8	67.0	10.8	13
2676	Sanitary paper products	226.0	684.0	91.9	184.3	-92.4	-100
2677	Envelopes	8.7	27.6	3.0	9.6	-6.6	-220
2678	Stationery, tablets, pads and related products	146.7	166.3	92.5	53.0	39.5	42
2679 pt.	Wallcoverings	342.5	80.3	79.8	20.4	59.4	74
2711	Newspapers	11.3	34.9	2.1	8.0	-5.9	-280
2721	Periodicals	217.2	788.5	59.9	212.6	-152.7	-254
2731	Books	1 060.5	1 757.4	322.3	483.0	-160.7	-49
2741 pt., 2752 pt., 4 pt., 9 pt.	Catalogs and directories	54.7	72.2	16.0	23.7	-7.7	-48
2752 pt., 4 pt., 9 pt., 2741 pt., 2782 pt.	Commercial and other miscellaneous printing materials	733.2	1 140.5	264.8	367.5	-102.7	-38
2761	Manifold business forms	3.5	16.9	3.8	4.0	-2	-5
2771	Greeting cards	107.1	83.2	29.0	39.0	-10.0	-34
2782 pt.	Blankbooks and looseleaf binders	342.6	115.1	106.8	34.0	72.8	68
2796 pt., 2759 pt.	Plates, stereotype, etc.	5.4	61.1	1.2	22.3	-21.1	-1 758
2812	Alkalies and chlorine	180.0	594.6	55.7	234.3	-178.6	-320
2813	Industrial gases	45.5	107.1	12.7	31.0	-18.3	-144
2816	Inorganic pigments	567.1	692.9	147.9	190.0	-42.1	-28
2819, 2842 pt.	Industrial inorganic chemicals, n.e.c.	4 807.0	4 513.4	1 414.0	1 302.1	111.9	7
2821	Plastics materials and resins	3 438.2	8 428.9	1 001.1	2 516.5	-1 515.4	-151
2822	Synthetic rubber	654.8	1 080.8	149.6	333.3	-183.7	-122
2823	Synthetic cellulosic fibers	149.6	487.4	39.7	193.0	-153.3	-386
2824, 2282 pt.	Organic fibers, noncellulosic	1 206.9	1 106.5	317.8	343.4	-25.6	-8
2833	Medicinals and botanicals	3 400.4	2 281.4	1 150.7	688.0	462.7	40
2834	Pharmaceutical preparations	2 544.7	2 314.9	744.8	584.7	160.1	21
2835	Diagnostics substances, in vitro and in vivo	537.4	1 507.0	120.2	462.7	-342.5	-284
2836	Biological products	557.3	1 462.0	137.7	418.7	-281.0	-204
2841, 2 pt.	Soap and other detergents	349.4	716.2	125.1	205.2	-80.1	-64
2842 pt.	Polishing preparations and related products	59.2	174.4	16.9	50.1	-33.2	-196
2843	Surface active agents	276.4	734.1	73.4	184.4	-111.0	-151
2844	Toilet preparations	1 064.0	1 733.1	314.3	485.3	-171.0	-54
2851, 2891 pt.	Paint and allied products	270.8	935.9	88.3	249.4	-161.1	-182
2861	Gum and wood chemicals	96.6	147.2	21.9	39.1	-17.2	-78
2865 pt.	Cyclic crudes and intermediates	1 965.2	2 737.9	614.5	866.3	-251.8	-40
2869 pt.	Industrial organic chemicals, n.e.c.	7 091.4	9 649.0	2 120.1	2 909.1	-789.0	-37
2873	Fertilizers	617.2	6.7	232.9	2.3	230.6	99
2874, 5	Phosphatic fertilizers	899.2	2 737.0	190.4	794.7	-604.3	-317
2879, 2869 pt.	Agricultural chemicals, n.e.c.	931.2	1 938.9	229.7	484.3	-254.6	-110
2891 pt.	Synthetic resins and natural base glues and adhesives	140.7	282.8	33.8	79.2	-45.4	-134
2892	Explosives	94.7	219.1	17.8	46.6	-28.8	-161
2893	Printing ink	151.5	153.3	69.8	46.3	23.5	33
2895	Carbon blacks	76.0	113.7	21.9	29.9	-8.0	-36
2899 pt.	Chemical preparations, n.e.c.	955.9	2 095.9	313.2	581.0	-267.8	-85
2911, 2869 pt., 2992	Petroleum refinery products	10 110.7	4 958.4	2 641.0	1 533.3	1 107.7	41
2951, 2 pt.	Paving mixtures and blocks	58.6	24.6	13.0	6.7	6.3	48
2952 pt.	Asphalt and tar felts, prepared asphalt, and siding products	73.9	77.6	14.5	14.9	-4	-2
2999, 2865 pt.	Petroleum and coal products, n.e.c.	115.7	449.5	21.0	165.9	-144.9	-690
3011	Tires and inner tubes	3 149.4	1 598.0	755.6	499.2	256.4	33
3021	Rubber and plastics footwear	3 175.6	127.3	791.5	30.6	760.9	96
3052, 3084	Rubber and plastics hose and belting	667.8	782.6	217.2	226.4	-9.2	-4
3053	Gaskets, packing and sealing devices	784.4	439.7	203.6	133.8	69.8	34
3061, 9, 3089 pt.	Fabricated rubber products, n.e.c.	1 601.2	930.4	488.0	243.8	244.2	50
3081	Unsupported plastics film and sheet	1 328.8	2 014.4	382.1	556.2	-174.1	-45
3082	Unsupported plastics rods, profiles, tubes, and other shapes	122.7	76.5	35.9	24.1	11.8	32
3085	Plastics bottles	124.0	204.2	38.4	53.7	-15.3	-39
3088	Plastics plumbing fixtures	55.9	38.4	13.9	13.3	6	4
3089 pt., 7, 6, 3	Other miscellaneous plastics and rubber products, n.e.c.	4 174.9	3 730.6	1 217.6	988.9	228.7	18
3111	Leather	896.9	700.5	235.9	157.6	78.3	33
3131	Footwear cut stock	480.8	156.4	100.1	50.6	49.5	49
3142	House slippers	77.6	5.9	24.4	1.2	23.2	95
3143	Men's footwear, except athletic and slippers	2 154.8	148.9	516.6	36.0	480.6	93
3144	Women's footwear, except athletic and slippers	3 793.3	51.6	902.8	12.4	890.4	98

Table 9. Imports for Consumption Compared to Domestic Exports by Four-Digit SIC-Based Commodity Groups in SIC-Order—Con.

[Million dollars. For meaning of abbreviations and symbols, see introductory text. Only those commodity groups that are totally comparable are included in this table]

SIC code	Industry	1994		Fourth quarter, 1995		Quarter comparison	
		Imports	Exports	Imports	Exports	Value	Percent
3149	Footwear, except rubber, n.e.c., incl. athletic -----	2 492.0	141.4	554.1	40.6	513.5	92
3151, 2381 pt.	Leather gloves and mittens -----	270.8	13.8	69.8	3.9	65.9	94
3161	Luggage -----	1 830.8	165.8	489.7	47.7	442.0	90
3171	Women's handbags and purses -----	1 018.3	42.4	254.0	13.8	240.2	94
3172	Personal leather goods, n.e.c. -----	422.5	23.9	116.5	7.0	109.5	93
3199	Leather goods, n.e.c. -----	206.3	87.8	64.3	24.0	40.3	62
3211 pt., 3231 pt.	Laminated and flat glass -----	439.0	620.4	89.4	189.8	-100.4	-112
3221	Glass containers -----	349.7	127.1	98.5	31.2	67.3	68
3229, 3231 pt.	Glass products, n.e.c. -----	1 361.7	787.9	379.2	260.4	118.8	31
3231 pt.	Mirrors -----	536.7	522.5	160.5	126.6	33.9	21
3241	Cement, hydraulic -----	538.9	46.8	133.8	14.5	119.3	89
3251	Brick and structural clay tile -----	5.1	11.0	2.2	2.8	-6	-27
3253	Ceramic wall and floor tile -----	613.0	23.5	150.9	5.4	145.5	96
3255	Clay refractories -----	49.9	84.5	19.4	29.6	-10.2	-52
3259	Structural clay products, n.e.c. -----	13.5	8.2	3.3	1.3	2.0	60
3261	Vitreous plumbing fixtures and accessories -----	147.2	77.9	42.0	18.4	23.6	56
3262	Vitreous china table and kitchen articles -----	358.2	38.4	91.1	8.9	82.2	90
3264	Porcelain electrical products -----	159.0	94.1	45.1	22.6	22.5	49
3269, 3	Pottery products, n.e.c., including fine earthenware food utensils -----	1 513.8	240.1	412.9	102.3	310.6	75
3271	Concrete block and brick -----	8.2	5.2	2.4	1.1	1.3	54
3272	Concrete products, n.e.c. -----	162.5	66.2	71.1	20.4	50.7	71
3273	Ready-mixed concrete -----	-	.1	-	-	-	(X)
3274	Lime -----	18.1	9.2	8.6	1.7	6.9	80
3275	Gypsum products -----	58.2	50.5	22.1	14.5	7.6	34
3281	Cut stone and stone products -----	504.8	35.0	136.4	8.4	128.0	93
3291	Abrasive products -----	677.8	423.8	180.5	106.5	74.0	40
3292	Asbestos products -----	118.4	99.8	26.2	23.2	3.0	11
3295	Minerals, ground or treated -----	181.9	166.6	48.6	54.4	-5.8	-11
3296	Mineral wool -----	108.0	298.1	34.5	72.5	-38.0	-110
3297	Nonclay refractories, except dead-burned magnesite -----	176.8	259.3	53.0	74.9	-21.9	-41
3299	Nonmetallic mineral products, n.e.c. -----	166.1	119.0	43.9	48.0	-4.1	-9
3312 pt., 6, 7	Blast furnace and steel mill products -----	13 704.8	3 016.5	2 958.9	1 356.7	1 602.2	54
3313	Electrometallurgical products -----	948.0	92.0	361.1	30.2	330.9	91
3315 pt., 2 pt.	Steel nails, staples, tacks, spikes, and brads -----	897.2	187.5	230.4	51.2	179.2	77
3321, 2, 4, 5	Gray iron castings -----	329.5	304.8	102.5	107.8	-5.3	-5
3331, 3341 pt.	Copper smelting and refining products -----	1 268.6	456.2	433.1	141.7	291.4	67
3334, 3341 pt., 3355 pt.	Aluminum and aluminum-base alloys -----	3 605.0	599.7	767.3	205.1	562.2	73
3339 pt., 3341 pt.	Nonferrous smelting and refining products, n.e.c. -----	5 001.3	5 648.0	1 613.0	1 045.8	567.2	35
3341 pt., 3339 pt.	Refined primary zinc and secondary zinc -----	794.5	17.8	201.9	3.4	198.5	98
3351 pt.	Copper rolling and drawing -----	716.8	422.7	205.3	166.1	39.2	19
3353 pt.	Aluminum sheet, plate, and foil -----	959.9	1 675.6	313.0	546.0	-233.0	-74
3354, 3355 pt., 3353 pt.	Aluminum extruded and rolled products -----	271.7	235.8	53.8	77.0	-23.2	-43
3356, 3357 pt.	Mill products of nonferrous metals, n.e.c.: rolled, drawn, or extruded -----	1 015.2	853.8	256.2	265.6	-9.4	-3
3357 pt., 1 pt., 5 pt., 3699 pt.	Nonferrous wire and cable -----	1 876.0	2 565.7	684.8	727.0	-42.2	-6
3363, 3365	Aluminum and aluminum-base alloy castings -----	49.6	50.2	11.7	16.2	-4.5	-38
3399	Primary metal products, n.e.c. -----	243.1	201.1	75.9	52.4	23.5	30
3411 pt.	Aluminum cans, excluding parts -----	77.2	144.2	16.1	67.8	-51.7	-321
3412, 3411 pt.	Metal barrels, drums, and pails, incl. steel cans -----	145.2	193.1	41.9	43.4	-1.5	-3
3421	Cutlery -----	573.5	313.8	164.4	80.9	83.5	50
3423	Hand and edge tools, n.e.c. -----	973.7	597.6	260.3	154.0	106.3	40
3425	Handsaws and saw blades -----	192.1	122.3	53.2	31.8	21.4	40
3429	Hardware, n.e.c. -----	1 605.9	1 248.3	464.5	325.3	139.2	29
3431	Metal plumbing fixtures -----	116.7	75.0	29.8	20.2	9.6	32
3432	Plumbing fixture fittings -----	228.3	64.7	62.4	16.0	46.4	74
3433	Heating equipment, except electric -----	171.9	216.8	51.0	55.3	-4.3	-8
3441, 9 pt.	Fabricated structural metal -----	82.7	71.2	25.7	23.0	2.7	10
3442	Metal doors, sash, and trim -----	67.6	121.4	26.9	30.2	-3.3	-12
3443 pt., 4	Fabricated plate work -----	497.7	1 072.8	210.3	357.3	-147.0	-69
3444 pt., 5	Metal roofing, flooring, and siding -----	7.2	38.8	4.0	14.8	-10.8	-270
3446	Architectural and ornamental work -----	22.5	35.0	32.2	9.0	23.2	72
3448	Prefabricated metal buildings -----	21.0	196.9	8.9	53.1	-44.2	-496
3449 pt., 3444 pt., 3443 pt.	Miscellaneous metalwork -----	116.3	281.4	13.2	82.2	-69.0	-522
3452	Bolts, nuts, rivets, and washers -----	1 763.2	905.1	601.2	275.5	325.7	54
3465	Automotive stampings -----	433.4	437.7	100.2	50.4	49.8	49
3466	Crowns and closures -----	91.9	139.8	20.7	43.7	-23.0	-111
3469 pt.	Stamped and spun utensils, cooking and kitchen, aluminum -----	195.3	19.0	75.5	5.5	70.0	92
3482, 3	Ammunition -----	208.9	1 500.6	39.0	658.2	-619.2	-1 587
3484	Small arms -----	555.1	202.0	111.2	42.8	68.4	61
3489	Ordinance and accessories, n.e.c. -----	19.5	508.6	3.5	123.5	-120.0	-3 428
3491, 2 pt., 4, 8	Valves and pipe fittings -----	2 737.0	2 211.3	782.3	673.0	109.3	13
3492 pt.	Valves for power transfer, pneumatic and hydraulic -----	163.9	208.8	51.2	52.9	-1.7	-3
3493, 5	Steel springs, except wire -----	509.1	214.6	137.0	71.3	65.7	47
3496, 3357 pt., 3315 pt.	Miscellaneous fabricated wire systems -----	795.0	390.5	228.0	109.0	119.0	52
3497	Metal foil and leaf -----	259.5	174.0	71.8	51.0	20.8	28
3499, 3462, 3, 9 pt., 3451, 3442 pt., 3364, 6, 9, 3312 pt.	Miscellaneous fabricated metal products -----	2 567.2	1 689.8	725.8	491.9	233.9	32

Table 9. Imports for Consumption Compared to Domestic Exports by Four-Digit SIC-Based Commodity Groups in SIC-Order—Con.

[Million dollars. For meaning of abbreviations and symbols, see introductory text. Only those commodity groups that are totally comparable are included in this table]

SIC code	Industry	1994		Fourth quarter, 1995		Quarter comparison	
		Imports	Exports	Imports	Exports	Value	Percent
3511	Turbines and turbine generator sets	830.3	3 039.9	209.1	1 171.0	-961.9	-460
3519	Internal combustion engines, n.e.c.	2 383.1	4 937.9	678.9	1 330.6	-651.7	-95
3523 pt.	Farm machinery and equipment	3 006.6	2 646.9	665.4	761.7	-96.3	-14
3524, 3 pt.	Consumer turf and grounds care equipment, including parts	184.7	740.3	41.7	156.2	-114.5	-274
3531	Construction machinery	4 425.2	5 192.3	939.4	1 351.5	-412.1	-43
3532	Mining machinery	392.0	987.1	122.9	284.6	-161.7	-131
3533	Oil field machinery	69.2	3 545.7	24.3	1 073.3	-1 049.0	-4 316
3534	Elevators and moving stairways	127.1	136.9	37.2	43.3	-6.1	-16
3535	Parts, attachments, and accessories for conveyors and conveying equipment	416.5	565.7	131.3	183.5	-52.2	-39
3536	Hoists, cranes, and monorails	135.3	118.3	43.1	32.7	10.4	24
3537	Industrial trucks and tractors	1 441.3	911.9	430.5	334.5	96.0	22
3541	Machine tools, metal-cutting types	2 463.3	1 353.1	995.8	386.3	609.5	61
3542, 9 pt.	Machine tools, metal-forming types	1 032.3	825.5	328.2	248.9	79.3	24
3543	Industrial patterns	16.3	33.0	4.1	6.8	-2.7	-65
3544, 5 pt.	Special dies, tools, jigs, and fixtures	2 734.0	1 306.2	659.2	378.7	280.5	42
3545 pt.	Precision measuring tools	116.2	65.9	37.2	20.0	17.2	46
3546	Power driven hand tools	971.4	699.4	289.5	182.5	107.0	36
3547	Rolling mill machinery	119.6	231.3	53.6	67.4	-13.8	-25
3548	Welding apparatus, electric	543.0	684.5	173.5	195.9	-22.4	-12
3552	Textile machinery	1 819.9	567.4	396.0	166.7	229.3	57
3553	Woodworking machinery	623.4	183.9	150.9	43.9	107.0	70
3554	Paper industries machinery	911.9	653.0	259.3	241.5	17.8	6
3555	Printing trade machinery	1 587.4	1 028.6	649.7	352.0	297.7	45
3556	Food products machinery	498.0	733.5	143.4	219.4	-76.0	-52
3559 pt.	Special industry machinery, n.e.c.	2 642.3	3 443.5	810.7	1 620.0	-809.3	-99
3561	Pumps and pumping equipment	733.2	1 209.8	224.6	317.0	-92.4	-41
3562	Ball and roller bearings	1 201.5	732.9	358.0	223.3	134.7	37
3563	Air and gas compressors	908.5	1 435.0	300.8	382.0	-81.2	-26
3564, 3634 pt.	Blowers and fans	1 510.1	837.4	307.9	247.0	60.9	19
3565	Packaging machinery	863.4	792.1	265.2	232.8	32.4	12
3566	Speed changers, drives, and gears	1 027.4	532.2	294.5	152.5	142.0	48
3567 pt.	Industrial furnaces and ovens	297.2	409.5	68.9	168.9	-100.0	-145
3568	Power transmission equipment, n.e.c.	414.8	337.1	111.2	86.2	25.0	22
3569, 7 pt., 3559 pt., 3549 pt.	General industrial machinery, n.e.c.	2 857.4	3 868.3	820.8	1 176.8	-356.0	-43
3571, 2 pt., 5 pt., 7 pt.	Electronic computing equipment and parts	22 993.6	22 122.6	8 558.1	8 039.5	518.6	6
3572 pt.	Computer storage equipment	11 112.2	3 415.1	4 218.0	1 056.5	3 161.5	74
3575 pt., 7 pt.	Computer peripheral equipment, n.e.c.	11 731.0	3 415.5	3 726.8	955.9	2 770.9	74
3578 pt.	Calculating and accounting machines	1 012.6	208.8	221.1	64.2	156.9	70
3579, 3578 pt.	Office machines, n.e.c.	1 445.7	886.4	441.8	277.1	164.7	37
3581	Automatic merchandising machines and parts	59.3	158.4	19.7	47.1	-27.4	-139
3585, 3632 pt.	Refrigeration and heating equipment	2 204.6	3 889.2	722.1	1 107.1	-385.0	-53
3586	Measuring and dispensing pumps	28.5	234.5	8.8	73.6	-64.8	-736
3589 pt.	Service industry machinery, n.e.c.	116.1	179.5	28.7	67.4	-38.7	-134
3593, 4 pt.	Fluid power cylinders and related equipment	370.0	350.7	115.5	108.6	6.9	5
3594 pt.	Fluid power pumps	299.0	265.2	91.0	83.1	7.9	8
3596	Scales and balances, except laboratory	227.0	137.6	61.1	39.7	21.4	35
3599 pt.	Machinery, except electrical, n.e.c.	1 133.5	2 070.1	387.5	750.5	-363.0	-93
3612	Transformers	602.1	383.8	195.7	128.0	67.7	34
3613 pt.	Switchgear and switchboard apparatus	403.6	438.6	101.2	117.9	-16.7	-16
3621	Motors and generators	2 938.3	2 128.8	797.0	635.8	161.2	20
3624	Carbon and graphite products	269.7	437.0	76.0	142.4	-66.4	-87
3625	Industrial controls and relays	2 138.6	1 593.9	652.1	467.0	185.1	28
3629 pt.	Capacitors	9.3	47.4	4.8	11.3	-6.5	-135
3631	Household cooking equipment	1 381.5	268.2	394.5	49.6	344.9	87
3632 pt.	Household refrigerators and freezers	334.3	690.8	70.5	176.4	-105.9	-150
3633, 3582	Household and commercial laundry equipment	331.2	644.6	101.5	165.6	-64.1	-63
3634 pt.	Electric housewares and fans	1 801.6	538.1	558.8	172.4	386.4	69
3635	Household vacuum cleaners	266.3	382.9	86.1	118.9	-32.8	-38
3639, 3589 pt.	Household appliances, n.e.c.	1 069.5	386.5	312.1	97.8	214.3	68
3641	Electric lamps	862.3	661.9	245.8	165.7	80.1	32
3643 pt., 4 pt., 3679 pt., 3613 pt.	Current carrying wiring devices	1 848.6	1 417.4	434.9	422.7	12.2	2
3644 pt.	Noncurrent-carrying wiring devices	909.5	1 088.0	249.7	330.8	-81.1	-32
3647	Vehicular lighting equipment	478.5	284.0	129.0	72.3	56.7	43
3648, 5, 6	Lighting fixtures and equipment, n.e.c.	1 764.4	542.8	530.1	160.4	369.7	69
3651	Radio receivers, TV sets, compact disc players, speakers and related equipment	16 582.5	3 115.9	4 654.6	842.7	3 811.9	81
3652	Prerecorded compact discs, tapes, and records	715.9	3 495.6	389.4	976.8	-587.4	-150
3661	Telephone and telegraph apparatus	6 761.1	4 788.6	1 886.6	1 631.1	255.5	13
3663	Radio and television communication equipment	5 773.6	5 284.9	1 648.7	2 041.1	-392.4	-23
3669	Communication equipment, n.e.c.	686.5	559.4	179.2	168.9	10.3	5
3671	Electron tubes (except x-ray)	1 249.5	1 231.9	351.7	418.6	-66.9	-19
3672	Printed circuit boards	2 438.8	1 376.9	759.3	432.5	326.8	43
3674 pt.	Semiconductors and related devices	25 865.7	17 422.6	11 446.3	6 120.6	5 325.7	46
3675	Electronic capacitors and related devices	938.0	833.0	310.5	314.1	-3.6	-1
3676	Electronic resistors	551.9	319.7	177.6	90.7	86.9	48
3677	Electronic coils and transformers	848.7	208.3	302.1	74.9	227.2	75
3678, 3643 pt., 3629 pt.	Electronic connectors	901.4	908.8	288.1	248.9	39.2	13
3679 pt., 3674 pt., 3629 pt.	Electronic components, n.e.c.	5 339.7	4 334.9	1 801.3	1 405.6	395.7	21
3691	Storage batteries	1 187.1	655.2	383.5	190.8	192.7	50
3692	Primary batteries	287.5	465.9	71.8	128.0	-56.2	-78
3694	Engine electrical equipment	4 357.6	2 378.4	1 108.5	521.6	586.9	52

Table 9. Imports for Consumption Compared to Domestic Exports by Four-Digit SIC-Based Commodity Groups in SIC-Order—Con.

[Million dollars. For meaning of abbreviations and symbols, see introductory text. Only those commodity groups that are totally comparable are included in this table]

SIC code	Industry	1994		Fourth quarter, 1995		Quarter comparison	
		Imports	Exports	Imports	Exports	Value	Percent
3695	Magnetic and optical recording media -----	1 976.6	1 736.1	499.9	593.9	-94.0	-18
3699 pt.	Electrical equipment, n.e.c. -----	2 299.1	2 788.4	676.9	891.9	-215.0	-31
3711 pt., 3713 pt.	Motor vehicles, including motor vehicle bodies -----	80 821.5	21 150.1	21 546.2	5 455.7	16 090.5	74
3713 pt.	Truck, bus, and other vehicle bodies -----	197.0	150.4	41.5	33.7	7.8	18
3714, 3592	Motor vehicle parts and accessories -----	21 560.0	24 171.4	5 641.9	6 379.8	-737.9	-13
3715	Truck trailers -----	127.3	278.3	45.0	84.9	-39.9	-88
3721	Aircraft -----	3 818.9	18 831.1	840.2	3 025.1	-2 184.9	-260
3724, 3764 pt.	Aircraft engines and engine parts -----	5 459.7	6 451.1	1 251.6	1 659.8	-408.2	-32
3728, 3769 pt.	Aircraft parts, including missile and space vehicle -----	2 506.6	9 472.3	598.0	2 729.7	-2 131.7	-356
3731	Ship building and repairing -----	12.8	594.5	3.5	134.6	-131.1	-3 745
3732	Boat building and repairing -----	576.7	507.2	228.2	136.7	91.5	40
3743	Railroad equipment -----	983.1	601.0	245.6	227.0	18.6	7
3751	Motorcycles, bicycles, and parts -----	1 825.2	711.1	629.3	229.6	399.7	63
3761	Missile and space vehicle systems, excluding propulsion ---	.3	24.4	—	7.0	-7.0	(X)
3764 pt.	Complete missile or space vehicle engine and/or propulsion units -----	—	1.6	.1	29.4	-29.3	-29 300
3792, 3799 pt.	Transportation equipment, n.e.c. -----	275.1	379.7	92.7	111.8	-19.1	-20
3795, 3711 pt.	Military tanks -----	55.0	1 671.6	14.6	422.0	-407.4	-2 790
3799 pt.	Travel trailers -----	14.5	72.8	1.6	13.9	-12.3	-768
3812	Aeronautical, nautical, and navigational instruments, including automatic pilots -----	783.6	1 957.8	238.0	550.4	-312.4	-131
3822	Automatic controls -----	294.8	183.7	84.1	53.3	30.8	36
3823	Process control instruments -----	1 678.9	2 666.0	519.0	664.0	-145.0	-27
3824, 3829 pt.	Fluid meters and counting devices -----	970.2	426.9	225.8	90.7	135.1	59
3825	Instruments to measure electricity -----	1 563.8	3 387.8	533.7	1 193.2	-659.5	-123
3826, 3821	Analytical and scientific instruments, including laboratory ---	1 007.9	2 223.2	329.8	707.3	-377.5	-114
3827 pt.	Optical instruments and lenses -----	1 163.0	884.9	368.7	285.7	83.0	22
3829 pt., 3827 pt.	Measuring and controlling devices, n.e.c. -----	606.5	1 666.0	189.7	508.1	-318.4	-167
3841	Surgical and medical instruments -----	1 502.4	2 467.2	480.5	733.0	-252.5	-52
3842	Surgical appliances and supplies -----	929.9	1 968.3	298.5	547.8	-249.3	-83
3843	Dental equipment and supplies -----	225.4	512.2	64.8	148.4	-83.6	-129
3844	Irradiation equipment -----	1 079.7	965.9	305.6	297.8	7.8	2
3845	Electromedical equipment -----	1 311.8	2 820.1	375.1	846.0	-470.9	-125
3851	Ophthalmic goods -----	1 247.5	500.5	369.9	152.0	217.9	58
3861	Photographic equipment and supplies -----	7 877.2	3 705.0	2 204.5	999.0	1 205.5	54
3873	Watches, clocks, and watchcases -----	2 493.5	200.3	700.9	51.1	649.8	92
3911, 5 pt.	Jewelry, precious metals and jeweler's findings and materials -----	3 585.5	403.8	1 206.5	111.8	1 094.7	90
3914	Silverware and plated ware -----	326.3	57.0	95.6	23.0	72.6	75
3915 pt.	Lapidary work including diamond cutting and polishing -----	6 482.2	276.0	1 657.7	65.6	1 592.1	96
3931	Musical instruments and parts -----	795.7	372.2	247.7	100.7	147.0	59
3942	Dolls and stuffed toy animals -----	2 335.1	89.6	850.6	27.9	822.7	96
3944	Games, toys, and children's vehicles -----	5 502.4	753.8	1 988.3	218.8	1 769.5	88
3949	Sporting and athletic goods, n.e.c. -----	3 330.5	1 788.8	946.7	588.4	358.3	37
3951	Pens and mechanical pencils -----	511.3	200.4	157.6	66.0	91.6	58
3952	Pens, pencils, office and art supplies -----	143.1	61.7	37.5	15.0	22.5	60
3953	Hand stamps, stencils, and other marking devices -----	42.5	9.8	14.7	2.5	12.2	82
3955	Carbon paper and inked ribbons -----	331.0	320.6	67.2	93.0	-25.8	-38
3961, 3915 pt.	Costume jewelry -----	689.8	129.6	161.0	37.8	123.2	76
3965	Needles, pins, and fasteners -----	331.9	159.1	77.6	37.9	39.7	51
3991	Brooms and brushes -----	365.7	128.1	110.0	35.1	74.9	68
3993	Signs and advertising display -----	45.2	59.6	12.1	18.3	-6.2	-51
3996	Hard surface floor coverings -----	163.2	115.3	42.6	24.2	18.4	43
3999	Manufacturing industries, n.e.c. -----	2 843.5	911.3	745.2	259.2	486.0	65

Table 10. Nonagricultural Employment by Two-Digit SIC Division and Four-Digit Mining and Manufacturing Industries

[Thousand employees. For meaning of abbreviations and symbols, see introductory text]

SIC Code	Industry			Fourth quarter		Quarter change between 1995 and 1994		Year change between 1995 and 1994	
		1995	1994	1995	1994	Number	Percent	Number	Percent
	Nonagricultural establishments	116 607.3	114 034.2	118 091.7	116 219.3	1 872.4	2	2 573.1	2
	Mineral commodities	578.8	600.3	573.7	598.7	-25.0	-4	-21.5	-4
10	Metal mining commodities	51.2	48.8	50.9	49.4	1.5	3	2.4	5
1011	Iron ores	9.0	8.8	8.8	9.0	-.2	-2	(Z)	(X)
1021	Copper ores	15.3	14.4	14.8	14.7	(Z)	(X)	.9	6
1031	Lead and zinc ores	2.4	2.4	2.4	2.3	(Z)	(X)	-	(X)
1041, 4	Gold and silver ores	18.2	17.4	18.4	17.5	.9	5	.8	5
1061, 1081, 1094, 1099	Other metal ores and mining services	6.4	5.9	6.4	5.9	.5	8	.5	8
12	Coal	106.8	112.2	104.8	111.4	-6.6	-6	-5.4	-5
1221	Bituminous coal and lignite-surface	43.5	46.0	43.2	45.6	-2.4	-5	-2.5	-5
1222	Bituminous coal-underground	56.4	58.8	55.3	58.1	-2.8	-5	-2.4	-4
1231, 1241	Anthracite and coal mining services	7.0	7.5	6.3	7.8	-1.5	-19	-5	-7
13	Oil and gas extraction	316.0	335.8	311.9	332.8	-20.9	-6	-19.8	-6
1311	Crude petroleum and natural gas	148.4	161.9	144.7	158.1	-13.4	-8	-13.5	-8
1321	Natural gas liquids	6.9	5.7	6.8	7.0	-.2	-3	1.2	21
1381, 2, 9	Oil and gas field services	160.7	168.3	160.5	167.8	-7.3	-4	-7.6	-5
14	Nonmetallic minerals products, except fuels	104.7	103.3	105.9	104.8	1.1	1	1.4	1
1411, 1481, 1499	Other nonmetallic minerals and services	9.9	9.9	9.8	10.0	-.2	-2	-	(X)
1422, 3, 9	Crushed and broken stone	40.3	39.5	40.8	40.1	.7	2	.8	2
1442, 6	Sand and gravel	33.2	32.7	33.8	33.2	.6	2	.5	2
1455, 9	Clay and related minerals	7.1	7.4	7.1	7.3	-.2	-3	-.3	-4
1474, 5, 9	Chemical and fertilizer mining, n.e.c.	14.2	14.0	14.3	14.1	(Z)	(X)	(Z)	(X)
	Construction division	5 245.5	5 009.8	5 398.0	5 232.7	165.3	3	235.7	5
	Manufactured commodities	18 403.1	18 302.8	18 345.3	18 491.7	-146.4	-1	100.3	1
20	Food and kindred products	1 684.9	1 679.6	1 692.2	1 692.5	-.3	(Z)	5.3	(Z)
2011	Meat packing plants	140.8	137.6	140.7	140.0	.7	1	3.2	2
2013	Sausages and other prepared meats	92.2	89.5	93.9	91.0	2.9	3	2.7	3
2015	Poultry slaughtering and processing	231.8	223.5	235.6	229.0	6.6	3	8.3	4
2021	Creamery butter	2.1	2.1	2.1	2.2	-.1	-5	-	(X)
2022	Cheese, natural and processed	39.8	39.4	40.8	39.7	1.1	3	(Z)	(X)
2023	Dry, condensed evaporated products	18.2	18.0	18.3	18.1	(Z)	(X)	(Z)	(X)
2024	Ice cream and frozen desserts	24.9	23.6	23.4	22.5	.9	4	1.3	6
2026	Fluid milk	64.9	65.6	64.8	64.9	-.1	(Z)	-.7	-1
2032	Canned specialties	20.3	21.5	20.5	21.5	-1.0	-5	-1.2	-6
2033	Canned fruits and vegetables	76.8	81.7	69.6	73.9	-4.3	-6	-4.9	-6
2034	Dehydrated fruits, vegetables, and soups	16.9	18.1	17.7	19.0	-1.3	-7	-1.2	-7
2035	Pickles, sauces, and salad dressings	25.6	24.5	24.8	24.0	.8	3	1.1	4
2037	Frozen fruits and vegetables	50.5	49.4	50.4	49.6	.8	2	1.1	2
2038	Frozen specialties, n.e.c.	49.5	49.7	49.2	51.6	-2.4	-5	-2	(Z)
2041	Flour and other grain mill products	18.8	19.5	18.9	19.5	-.6	-3	-.7	-4
2043	Cereal breakfast foods	18.6	19.6	18.6	19.4	-.8	-4	-1.0	-5
2044	Rice milling	4.7	4.9	4.8	4.8	-	(X)	-.2	-4
2045	Prepared flour mixes and doughs	14.0	13.9	14.3	14.2	(Z)	(X)	(Z)	(X)
2046	Wet corn milling	9.8	9.5	9.8	9.5	(Z)	(X)	(Z)	(X)
2047	Dog and cat food	17.5	18.0	17.0	18.2	-1.2	-7	-.5	-3
2048	Prepared feeds, n.e.c.	42.5	42.4	42.8	42.7	(Z)	(X)	(Z)	(X)
2051	Bread, cake, and related products	151.9	152.8	152.6	153.7	-1.1	-1	-.9	-1
2052, 3	Cookies, crackers, and frozen bakery products, exc. bread	59.9	60.1	60.4	61.8	-1.4	-2	-.2	(Z)
2061	Raw cane sugar	6.1	6.1	7.7	7.3	(Z)	(X)	-	(X)
2062	Cane sugar refining	4.6	4.9	4.7	4.7	-	(X)	-.3	-6
2063	Beet sugar	9.6	9.3	12.8	12.4	(Z)	(X)	(Z)	(X)
2064	Candy and other confectionery products	52.0	51.0	57.4	55.6	1.8	3	1.0	2
2066, 7	Chocolate, cocoa products, and chewing gum	19.2	19.7	19.3	20.0	-.7	-4	-.5	-3
2068	Salted and roasted nuts and seeds	7.8	8.4	8.2	9.2	-1.0	-11	-.6	-7
2074, 5, 6	Oil mills	13.1	13.1	13.2	13.6	-.4	-3	-	(X)
2077	Animal and marine fats and oils	9.4	8.5	9.4	9.0	(Z)	(X)	.9	11
2079	Edible fats and oils, n.e.c.	10.7	10.7	10.8	10.9	-.1	-1	-	(X)
2082	Malt beverages	36.3	37.3	35.7	36.8	-1.1	-3	-1.0	-3
2083, 7	Malt and other flavoring extracts, n.e.c.	19.2	19.1	19.2	18.6	.6	3	(Z)	(X)
2084	Wines, brandy, and brandy spirits	17.5	17.4	18.4	17.6	.8	5	(Z)	(X)
2085	Distilled and blended liquors	8.4	8.4	8.6	8.8	-.2	-2	-	(X)
2086	Bottled and canned soft drinks	97.3	95.6	97.3	95.1	2.2	2	1.7	2
2091	Canned and cured fish and seafoods	9.6	9.1	9.5	9.0	.5	6	.5	5
2092	Fresh or frozen prepared fish	42.9	45.4	38.8	41.6	-2.8	-7	-2.5	-6
2095	Roasted coffee	10.6	10.5	10.9	10.4	.5	5	(Z)	(X)
2096	Potato chips, corn chips, and similar snacks	33.2	35.1	32.7	35.0	-2.3	-7	-1.9	-5
2097	Manufactured ice	6.9	6.8	6.3	6.3	-.6	(X)	(Z)	(X)
2098	Macaroni and spaghetti	8.5	8.6	8.8	8.6	-.2	(X)	-.1	-1
2099	Food preparations, n.e.c.	69.9	69.8	71.4	71.2	(Z)	(X)	(Z)	(X)
21	Tobacco products	39.4	42.2	40.5	43.2	-2.7	-6	-2.8	-7
2111	Cigarettes	27.5	29.9	26.8	29.0	-2.2	-8	-2.4	-8
2121	Cigars	2.7	2.2	2.9	2.3	.6	26	.5	23
2131, 2141	Other tobacco manufactures	9.2	10.2	10.8	11.9	-1.1	-9	-1.0	-10
22	Textile mill products	656.2	673.2	642.2	675.0	-32.8	-5	-17.0	-3
2211	Broadwoven fabric mills, cotton	79.2	80.7	78.6	80.7	-2.1	-3	-1.5	-2
2221	Broadwoven fabric mills, manmade	66.9	68.2	65.8	68.4	-2.6	-4	-1.3	-2
2231	Broadwoven fabric mills, wool	17.3	17.8	17.1	17.4	-.3	-2	-.5	-3
2241	Narrow fabric mills	23.2	23.2	22.4	23.9	-1.5	-6	-	(X)
2251	Women's hosiery, except socks	23.8	26.0	23.2	25.2	-2.0	-8	-2.2	-8

Table 10. **Nonagricultural Employment by Two-Digit SIC Division and Four-Digit Mining and Manufacturing Industries—Con.**

[Thousand employees. For meaning of abbreviations and symbols, see introductory text]

SIC Code	Industry	1995	1994	Fourth quarter		Quarter change between 1995 and 1994		Year change between 1995 and 1994	
				1995	1994	Number	Percent	Number	Percent
Manufactured commodities—Con.									
22	Textile mill products—Con.								
2252	Hosiery, n.e.c.	40.1	40.6	38.9	41.5	-2.6	-6	-5	-1
2253	Knit outerwear mills	54.6	57.7	53.2	57.0	-3.8	-7	-3.1	-5
2254	Knit underwear mills	23.1	24.5	22.0	24.5	-2.5	-10	-1.4	-6
2257	Weft knit fabric mill	26.8	27.6	25.4	27.5	-2.1	-8	-8	-3
2258, 9	Lace and warp knit fabric and knitting mills, n.e.c.	22.8	22.2	22.8	22.8	-	(X)	.6	3
2261	Finishing plants, cotton	31.5	32.4	31.0	32.6	-1.6	-5	-9	-3
2262	Finishing plants, manmade	24.9	25.3	24.4	25.7	-1.3	-5	-4	-2
2269	Finishing plants, n.e.c.	15.0	14.9	14.7	15.2	-.5	-3	(Z)	(X)
2273	Carpets and rugs	64.5	64.3	63.5	65.7	-2.2	-3	(Z)	(X)
2281	Yarn spinning mills	70.3	74.1	68.4	73.0	-4.6	-6	-3.8	-5
2282	Throwing and winding mills	14.7	14.5	14.6	14.5	(Z)	(X)	(Z)	(X)
2284	Thread mills	7.0	7.0	6.7	7.2	-.5	-7	-	(X)
2295	Coated fabrics, not rubberized	8.0	8.7	7.7	8.5	-.8	-9	-7	-8
2296	Tire cord and fabrics	6.3	6.5	6.3	6.4	-.1	-2	-2	-3
2297, 9	Nonwoven fabrics and miscellaneous textile goods, n.e.c.	29.6	30.1	29.2	30.2	-1.0	-3	-5	-2
2298	Cordage and twine	6.6	6.9	6.5	6.9	-.4	-6	-3	-4
23	Apparel and related products	915.8	969.4	880.7	970.3	-89.6	-9	-53.6	-6
2311	Men's and boys' suits and coats	35.3	39.3	33.8	38.6	-4.8	-12	-4.0	-10
2321	Men's and boys' shirts	56.4	60.5	53.1	59.8	-6.7	-11	-4.1	-7
2322	Men's and boys' underwear and nightwear	22.9	25.0	21.4	24.8	-3.4	-14	-2.1	-8
2323	Men's and boys' neckwear	6.0	6.5	5.9	6.3	-.4	-6	-.5	-8
2325	Men's and boys' trousers and slacks	78.2	81.3	73.6	81.8	-8.2	-10	-3.1	-4
2326	Men's and boys' work clothing	39.2	42.2	37.9	42.3	-4.4	-10	-3.0	-7
2329	Men's and boys' clothing, n.e.c.	48.1	50.4	45.7	50.5	-4.8	-10	-2.3	-5
2331	Women's and misses' blouses and shirts	27.2	30.6	25.4	29.7	-4.3	-14	-3.4	-11
2335	Women's, juniors', and misses' dresses	43.9	48.0	43.6	46.2	-2.6	-6	-4.1	-9
2337	Women's and misses' suits and coats	30.3	32.3	29.9	30.9	-1.0	-3	-2.0	-6
2339	Women's and misses' outerwear, n.e.c.	167.5	180.1	159.1	182.4	-23.3	-13	-12.6	-7
2341	Women's and children's underwear	37.0	39.7	34.0	40.0	-6.0	-15	-2.7	-7
2342	Bras, girdles, and allied garments	12.4	12.0	12.3	12.3	-	(X)	(Z)	(X)
2353	Hats, caps, and millinery	19.3	20.7	18.6	20.7	-2.1	-10	-1.4	-7
2361	Girls' and children's dresses, blouses	17.9	19.3	17.2	19.4	-2.2	-11	-1.4	-7
2369	Girls' and children's outerwear, n.e.c.	23.8	25.3	23.0	25.2	-2.2	-9	-1.5	-6
2371	Fur goods8	.8	.8	.8	-	(X)	-	(X)
2381	Fabric dress and work gloves	5.3	5.5	5.0	5.6	-.6	-11	-.2	-4
2384	Robes and dressing gowns	3.2	3.6	3.1	3.6	-.5	-14	-.4	-11
2385	Waterproof outer garments	4.8	5.2	4.9	5.2	-.3	-6	-.4	-8
2386	Leather and sheep-lined clothing	2.7	3.0	2.4	3.0	-.6	-20	-.3	-10
2387	Apparel belts	6.5	7.0	6.5	7.0	-.5	-7	-.5	-7
2389	Apparel and accessories, n.e.c.	16.0	16.5	15.6	16.3	-.7	-4	-.5	-3
2391	Curtains and draperies	19.6	20.6	19.1	20.9	-1.8	-9	-1.0	-5
2392	Housefurnishings, n.e.c.	55.1	56.5	54.9	57.3	-2.4	-4	-1.4	-2
2393	Textile bags	11.0	11.2	10.2	11.5	-1.3	-11	-.2	-2
2394	Canvas and related products	19.1	19.8	18.9	19.7	-.8	-4	-.7	-4
2395	Pleating and stitching	16.6	16.3	16.7	16.9	-.2	-1	(Z)	(X)
2396	Automotive and apparel trimmings	54.9	54.8	53.6	56.2	-2.6	-5	(Z)	(X)
2397, 9	Other fabricated textile products	35.0	35.4	34.4	35.7	-1.3	-4	-.4	-1
24	Lumber and wood products	757.3	752.2	757.9	766.6	-8.7	-1	5.1	1
2411	Logging	81.6	82.0	84.2	82.8	1.4	2	-.4	(Z)
2421	Sawmills and planing mills, general	146.6	149.9	144.1	150.3	-6.2	-4	-3.3	-2
2426	Hardwood dimension and flooring mills	37.2	36.8	36.6	37.5	-.9	-2	(Z)	(X)
2429	Special product sawmills, n.e.c.	1.9	2.0	1.9	2.0	-.1	-5	-.1	-5
2431	Millwork	110.3	110.1	109.8	112.7	-2.9	-3	(Z)	(X)
2434	Wood kitchen cabinets	75.8	74.7	75.5	77.1	-1.6	-2	1.1	1
2435	Hardwood veneer and plywood	24.8	24.5	24.5	25.0	-.5	-2	(Z)	(X)
2436	Softwood veneer and plywood	28.8	29.1	28.7	28.8	-.1	(Z)	-.3	-1
2439	Structural wood members, n.e.c.	31.6	32.3	32.5	32.5	-	(X)	-.7	-2
2441	Nailed wood boxes and shooks	4.2	3.9	4.3	4.0	(Z)	(X)	(Z)	(X)
2448	Wood pallets and skids	39.4	38.3	38.9	39.1	-.2	-1	1.1	3
2449	Wood containers, n.e.c.	7.1	7.2	7.2	6.9	(Z)	(X)	-.1	-1
2451	Mobile homes	59.7	55.2	61.0	58.5	2.5	4	4.5	8
2452	Prefabricated wood buildings	17.2	17.4	17.5	18.3	-.8	-4	-.2	-1
2491	Wood preserving	12.1	11.8	11.8	11.9	-.1	-1	(Z)	(X)
2493	Reconstituted wood products	19.5	19.2	19.4	19.3	(Z)	(X)	(Z)	(X)
2499	Wood products, n.e.c.	59.5	58.1	60.0	59.9	(Z)	(X)	1.4	2
25	Furniture and fixtures	499.9	501.8	498.3	509.5	-11.2	-2	-1.9	(Z)
2511	Wood household furniture	124.2	126.4	124.4	127.2	-2.8	-2	-2.2	-2
2512	Upholstered household furniture	90.3	91.7	90.5	92.0	-1.5	-2	-1.4	-2
2514	Metal household furniture	21.6	22.8	20.7	23.9	-3.2	-13	-1.2	-5
2515	Mattresses and bedsprings	30.9	30.3	30.8	30.8	-	(X)	.6	2
2517, 9	Wood TV, radio cabinets, and other household furniture n.e.c.	12.1	12.6	12.2	12.7	-.5	-4	-.5	-4
2521	Wood office furniture	28.7	28.8	28.4	29.3	-.9	-3	-.1	(Z)
2522	Office furniture, except wood	33.6	33.5	33.5	34.1	-.6	-2	(Z)	(X)
2531	Public building and related furniture	39.6	39.0	39.6	39.5	(Z)	(X)	.6	2
2541	Wood partitions and fixtures	45.2	44.3	44.7	45.7	-1.0	-2	.9	2
2542	Partitions and fixtures, except wood	36.9	35.7	36.3	36.9	-.6	-2	1.2	3
2591	Drapery hardware, blinds, and shades	20.4	20.4	20.3	20.8	-.5	-2	-	(X)
2599	Furniture and fixtures, n.e.c.	16.4	16.3	16.9	16.5	(Z)	(X)	(Z)	(X)

Table 10. **Nonagricultural Employment by Two-Digit SIC Division and Four-Digit Mining and Manufacturing Industries—Con.**

[Thousand employees. For meaning of abbreviations and symbols, see introductory text]

SIC Code	Industry			Fourth quarter		Quarter change between 1995 and 1994		Year change between 1995 and 1994	
		1995	1994	1995	1994	Number	Percent	Number	Percent
	Manufactured commodities—Con.								
26	Paper and allied products.....	687.9	691.3	682.6	692.6	-10.0	-1	-3.4	(Z)
2611	Pulp mills.....	12.5	12.6	12.5	12.6	-1	-1	-1	-1
2621	Paper mills.....	164.8	169.2	162.5	166.9	-4.4	-3	-4.4	-3
2631	Paperboard mills.....	50.7	50.5	50.5	50.0	.5	1	(Z)	(X)
2652	Setup paperboard boxes.....	8.0	8.0	8.2	8.6	-4	-5	-	(X)
2653	Corrugated and solid fiber boxes.....	128.3	125.3	129.1	127.6	1.5	1	3.0	2
2655	Fiber cans, drums and similar products.....	15.1	15.5	14.9	15.4	-5	-3	-4	-3
2656	Sanitary food containers, except folding.....	15.8	16.3	15.4	15.9	-5	-3	-5	-3
2657	Folding paperboard boxes, including sanitary.....	47.7	48.1	46.8	48.7	-1.9	-4	-4	-1
2671	Paper coated and laminated, packaging.....	21.9	21.3	21.8	21.3	.5	2	.6	3
2672	Paper coated and laminated, n.e.c.....	47.0	46.7	46.6	46.6	-	(X)	(Z)	(X)
2673	Plastics, foil and coated paper bags.....	40.4	39.9	40.3	40.6	-3	-1	.5	1
2674	Uncoated paper and multicoated bags.....	19.7	19.0	19.7	19.6	(Z)	(X)	.7	4
2675	Die-cut paper and board.....	19.6	19.6	19.4	20.2	-8	-4	-	(X)
2676	Sanitary paper products.....	31.3	32.5	31.2	32.1	-9	-3	-1.2	-4
2677	Envelopes.....	24.0	23.8	24.3	23.8	.5	2	(Z)	(X)
2678, 9	Paper and paperboard products, n.e.c.....	41.2	42.9	39.4	42.8	-3.4	-8	-1.7	-4
27	Printing and publishing.....	1 555.8	1 541.5	1 554.7	1 556.4	-1.7	(Z)	14.3	1
2711	Newspapers.....	452.9	450.4	452.6	454.2	-1.6	(Z)	2.5	1
2721	Periodicals.....	136.5	135.2	136.4	137.0	-.6	(Z)	1.3	1
2731	Book publishing.....	84.0	83.2	82.4	83.0	-.6	-1	.8	1
2732	Book printing.....	38.5	36.5	38.2	36.4	1.8	5	2.0	5
2741	Miscellaneous publishing.....	82.5	84.2	81.5	83.2	-1.7	-2	-1.7	-2
2752	Commercial printing, lithographic.....	364.2	357.9	365.7	362.8	2.9	1	6.3	2
2754	Commercial printing, gravure.....	21.8	21.1	22.4	21.5	.9	4	.7	3
2759	Commercial printing, n.e.c.....	176.3	171.9	176.8	175.0	1.8	1	4.4	3
2761	Manifold business forms.....	44.4	45.7	43.9	45.2	-1.3	-3	-1.3	-3
2771	Greeting cards.....	27.5	28.6	28.1	29.6	-1.5	-5	-1.1	-4
2782	Blankbooks and looseleaf binders.....	40.9	40.7	40.7	41.2	-.5	-1	(Z)	(X)
2789	Bookbinding and related work.....	30.3	29.6	30.2	30.2	-	(X)	.7	2
2791	Typesetting.....	22.9	23.5	22.5	23.8	-1.3	-5	-6	-3
2796	Platemaking services.....	33.4	33.2	33.3	33.4	-.1	(Z)	(Z)	(X)
28	Chemicals and allied products.....	1 045.3	1 060.6	1 037.1	1 053.2	-16.1	-2	-15.3	-1
2812	Alkalies and chlorine.....	12.6	12.6	12.6	12.4	(Z)	(X)	-	(X)
2813	Industrial gases.....	24.1	23.6	24.4	23.6	.8	3	.5	2
2816	Inorganic pigments.....	11.3	11.3	11.2	11.3	-.1	-1	-	(X)
2819	Industrial inorganic chemicals, n.e.c.....	80.5	84.7	78.2	84.0	-5.8	-7	-4.2	-5
2821	Plastics materials and resins.....	76.3	77.0	75.8	76.4	-.6	-1	-.7	-1
2822	Synthetic rubber.....	15.7	15.9	15.7	15.7	-	(X)	-.2	-1
2823	Cellulosic manmade fibers.....	16.5	16.7	16.2	15.9	(Z)	(X)	-.2	-1
2824	Organic fibers, noncellulosic.....	49.2	52.1	48.6	50.4	-1.8	-4	-2.9	-6
2833	Medicinals and botanicals.....	19.9	20.0	19.9	19.9	-	(X)	-.1	-1
2834	Pharmaceutical preparations.....	210.2	213.7	208.3	212.1	-3.8	-2	-3.5	-2
2835, 6	Diagnostic and biological products.....	29.5	29.6	29.2	30.0	-.8	-3	-.1	(Z)
2841	Soap and other detergents.....	42.2	43.2	42.5	42.8	-.3	-1	-1.0	-2
2842, 3	Polishes, sanitation goods, and surface active agents.....	42.4	42.1	41.7	42.5	-.8	-2	(Z)	(X)
2844	Toilet preparations.....	67.3	68.0	67.3	67.0	(Z)	(X)	-.7	-1
2851	Paints and allied products.....	58.1	57.8	57.4	57.8	-.4	-1	(Z)	(X)
2861	Gum and wood chemicals.....	2.6	2.8	2.5	2.7	-.2	-7	-.2	-7
2865	Cyclic crudes and intermediates.....	26.1	26.3	26.1	26.5	-.4	-2	-.2	-1
2869	Industrial organic chemicals, n.e.c.....	114.5	115.4	114.8	114.3	.5	(Z)	-.9	-1
2873	Nitrogenous fertilizer.....	8.5	8.8	8.4	8.7	-.3	-3	-.3	-3
2874	Phosphatic fertilizers.....	9.8	9.6	9.7	9.6	(Z)	(X)	(Z)	(X)
2875	Fertilizers, mixing only.....	10.1	9.7	9.8	9.4	(Z)	(X)	(Z)	(X)
2879	Agricultural chemicals, n.e.c.....	24.9	26.6	24.2	26.1	-1.9	-7	-1.7	-6
2891	Adhesives and sealants.....	23.4	23.1	23.5	23.1	(Z)	(X)	(Z)	(X)
2892	Explosives.....	8.0	9.0	7.7	8.8	-1.1	-13	-1.0	-11
2893	Printing ink.....	16.2	16.3	16.2	16.4	-.2	-1	-.1	-1
2895, 9	Other chemical preparations.....	45.5	45.1	45.1	45.7	-.6	-1	(Z)	(X)
29	Petroleum and coal products.....	143.6	148.9	140.0	149.8	-9.8	-7	-5.3	-4
2911	Petroleum refining.....	103.8	108.9	100.5	109.5	-9.0	-8	-5.1	-5
2951	Asphalt paving mixtures and blocks.....	13.7	14.1	13.8	14.4	-.6	-4	-.4	-3
2952	Asphalt felts and coatings.....	13.4	13.3	13.2	13.1	(Z)	(X)	(Z)	(X)
2992, 9	Miscellaneous petroleum and coal products.....	12.8	12.7	12.6	12.8	-.2	-2	(Z)	(X)
30	Rubber and miscellaneous plastics products.....	971.6	952.0	966.2	970.9	-4.7	(Z)	19.6	2
3011	Tires and inner tubes.....	82.7	79.6	82.7	77.5	5.2	7	3.1	4
3021	Rubber and plastics footwear.....	8.8	11.1	7.1	11.1	-4.0	-36	-2.3	-21
3052	Rubber and plastics hose and belting.....	25.9	25.2	25.8	25.7	(Z)	(X)	-.7	-3
3053	Gaskets, packing and sealing devices.....	40.6	38.3	40.6	39.2	1.4	4	2.3	6
3061	Mechanical rubber goods.....	50.3	49.1	49.6	50.7	-1.1	-2	1.2	2
3069	Fabricated rubber products, n.e.c.....	58.7	58.7	58.6	58.7	-.1	(Z)	-	(X)
3081	Unsupported plastics film and sheet.....	58.7	58.0	59.3	58.8	.5	1	.7	1
3082	Unsupported plastics profile shapes.....	27.2	26.1	27.3	26.8	.5	2	1.1	4
3083	Laminated plastics plate, sheet, and profile shapes.....	23.7	22.3	23.8	22.9	.9	4	1.4	6
3084	Plastics pipe.....	16.4	16.0	16.2	16.5	-.3	-2	(Z)	(X)

Table 10. **Nonagricultural Employment by Two-Digit SIC Division and Four-Digit Mining and Manufacturing Industries—Con.**

[Thousand employees. For meaning of abbreviations and symbols, see introductory text]

SIC Code	Industry			Fourth quarter		Quarter change between 1995 and 1994		Year change between 1995 and 1994	
		1995	1994	1995	1994	Number	Percent	Number	Percent
	Manufactured commodities—Con.								
36	Electrical equipment and supplies—Con.								
3635, 9	Household vacuum cleaners and other household appliances, n.e.c.	25.1	25.8	25.4	25.8	-4	-2	-7	-3
3641	Electric lamps	23.5	21.8	23.3	22.8	.5	2	1.7	8
3643	Current-carrying wiring devices	64.4	61.9	64.5	63.4	1.1	2	2.5	4
3644	Noncurrent-carrying wiring devices	19.5	19.6	19.0	19.9	-9	-5	-1	-1
3645	Residential lighting fixtures	20.8	21.0	20.7	21.5	-8	-4	-2	-1
3646	Commercial lighting fixtures	24.7	23.9	24.7	24.5	(Z)	(X)	.8	3
3647	Vehicular lighting equipment	18.1	17.3	18.3	17.6	.7	4	.8	5
3648	Lighting equipment, n.e.c.	11.2	10.9	11.3	11.2	(Z)	(X)	(Z)	(X)
3651	Household audio and video equipment	62.9	62.1	64.0	63.7	(Z)	(X)	.8	1
3652	Prerecorded compact discs, tapes, and records	29.9	26.5	31.3	28.6	2.7	9	3.4	13
3661	Telephone and telegraph apparatus	110.6	109.3	111.6	110.4	1.2	1	1.3	1
3663	Radio and TV communication equipment	112.2	109.1	112.2	111.3	.9	1	3.1	3
3669	Communications equipment, n.e.c.	26.2	25.2	26.1	25.8	(Z)	(X)	1.0	4
3671	Electron tubes	24.8	24.6	25.0	24.6	(Z)	(X)	(Z)	(X)
3672	Printed circuit boards	109.6	102.5	112.8	105.7	7.1	7	7.1	7
3674	Semiconductors and related devices	241.2	222.1	251.8	228.5	23.3	10	19.1	9
3675	Electronic capacitors	22.0	19.8	22.5	20.5	2.0	10	2.2	11
3676	Electronic resistors	11.1	10.6	11.4	10.7	.7	7	.5	5
3677	Electronic coils and transformers	16.7	16.7	16.7	16.8	-1	-1	-	(X)
3678	Electronic connectors	18.4	16.6	18.5	17.4	1.1	6	1.8	11
3679	Electronic components, n.e.c.	137.7	131.5	141.2	132.6	8.6	6	6.2	5
3691	Storage batteries	26.0	25.8	26.5	26.4	(Z)	(X)	(Z)	(X)
3692	Primary batteries, dry and wet	11.5	11.6	11.4	11.7	-3	-3	-1	-1
3694	Engine electrical equipment	67.6	68.9	66.7	69.8	-3.1	-4	-1.3	-2
3695, 9	Magnetic, optical recording media and electrical equipment, n.e.c.	49.0	50.0	48.9	50.2	-1.3	-3	-1.0	-2
37	Transportation equipment	1 744.3	1 748.9	1 715.5	1 769.5	-54.0	-3	-4.6	(Z)
3711	Motor vehicles and car bodies	354.9	339.6	356.8	352.0	4.8	1	15.3	5
3713	Truck and bus bodies	40.5	38.1	39.8	38.4	1.4	4	2.4	6
3714	Motor vehicle parts and accessories	483.2	466.9	482.4	483.0	-6	(Z)	16.3	3
3715	Truck trailers	35.1	34.1	33.7	34.9	-1.2	-3	1.0	3
3716	Motor homes	19.4	19.9	19.0	20.2	-1.2	-6	-5	-3
3721	Aircraft	242.9	271.1	224.0	264.1	-40.1	-15	-28.2	-10
3724	Aircraft engines and engine parts	88.6	93.6	88.8	90.4	-1.6	-2	-5.0	-5
3728	Aircraft parts and equipment, n.e.c.	110.9	114.7	109.1	112.3	-3.2	-3	-3.8	-3
3731	Ship building and repairing	105.5	107.2	104.2	106.7	-2.5	-2	-1.7	-2
3732	Boat building and repairing	56.8	52.2	56.7	55.4	1.3	2	4.6	9
3743	Railroad equipment	38.0	35.3	37.4	37.3	(Z)	(X)	2.7	8
3751	Motorcycles, bicycles, and parts	19.2	18.7	19.0	19.4	-4	-2	.5	3
3761	Guided missiles and space vehicles	70.4	76.1	67.9	74.5	-6.6	-9	-5.7	-7
3764, 9	Space propulsion units and other space vehicle equipment	28.3	31.4	27.4	30.2	-2.8	-9	-3.1	-10
3792	Travel trailers and campers	21.7	21.4	20.7	22.2	-1.5	-7	(Z)	(X)
3795	Tanks and tank components	7.3	8.6	6.8	7.8	-1.0	-13	-1.3	-15
3799	Transportation equipment, n.e.c.	21.6	20.0	21.8	20.8	1.0	5	1.6	8
38	Instruments and related products	843.8	863.3	838.3	854.6	-16.3	-2	-19.5	-2
3812	Search and navigation equipment	163.0	179.6	158.1	171.9	-13.8	-8	-16.6	-9
3821	Laboratory apparatus and furniture	10.6	10.4	10.4	10.7	-3	-3	(Z)	(X)
3822	Environmental controls	44.5	43.9	44.0	44.8	-8	-2	.6	1
3823	Process control instruments	62.4	61.6	62.2	61.4	.8	1	.8	1
3824	Fluid meters and counting devices	13.2	12.8	13.1	13.3	-2	-2	(Z)	(X)
3825	Instruments to measure electricity	71.5	71.7	71.7	71.4	(Z)	(X)	-2	(Z)
3826	Analytical instruments	27.2	27.2	27.1	27.2	-1	(Z)	-	(X)
3827	Optical instruments and lenses	20.4	18.8	21.4	19.2	2.2	11	1.6	9
3829	Measuring and controlling devices, n.e.c.	38.7	38.0	38.8	37.9	.9	2	.7	2
3841	Surgical and medical instruments	100.5	101.8	100.7	100.2	.5	(Z)	-1.3	-1
3842	Surgical appliances and supplies	94.8	96.5	94.6	96.4	-1.8	-2	-1.7	-2
3843	Dental equipment and supplies	13.8	14.3	13.8	14.3	-5	-3	-5	-3
3844	X-ray apparatus and tubes	10.1	10.6	10.1	10.5	-4	-4	-5	-5
3845	Electromedical equipment	42.4	41.6	42.8	41.7	1.1	3	.8	2
3851	Ophthalmic goods	36.1	37.3	35.8	36.3	-5	-1	-1.2	-3
3861	Photographic equipment and supplies	86.5	88.8	86.0	88.5	-2.5	-3	-2.3	-3
3873	Watches, clocks, watchcases and parts	8.0	8.4	7.7	8.8	-1.1	-13	-4	-5
39	Miscellaneous manufactures	393.4	390.3	397.6	399.3	-1.7	(Z)	3.1	1
3911	Jewelry, precious metal	37.8	38.2	39.0	39.8	-8	-2	-4	-1
3914	Silverware and plated ware	6.0	6.1	6.1	6.2	-1	-2	-1	-2
3915	Jewelers' materials and lapidary work	6.8	6.9	6.9	7.1	-2	-3	-1	-1
3931	Musical instruments	14.1	13.4	14.4	13.7	.7	5	.7	5
3942, 4	Dolls, games, toys, and children's vehicles	44.3	43.9	45.2	45.6	-4	-1	(Z)	(X)
3949	Sporting and athletic goods, n.e.c.	73.1	71.4	73.5	73.0	.5	1	1.7	2
3951	Pens and mechanical pencils	8.6	8.3	8.7	8.4	(Z)	(X)	(Z)	(X)
3952	Lead pencils and art goods	7.0	7.5	6.8	7.2	-4	-6	-5	-7
3953, 5	Marking devices, carbon paper, and inked ribbons	17.5	16.9	17.9	16.9	1.0	6	.6	4
3961	Costume jewelry	15.9	17.6	15.7	18.1	-2.4	-13	-1.7	-10

Table 10. **Nonagricultural Employment by Two-Digit SIC Division and Four-Digit Mining and Manufacturing Industries—Con.**

[Thousand employees. For meaning of abbreviations and symbols, see introductory text]

SIC Code	Industry	1995	1994	Fourth quarter		Quarter change between 1995 and 1994		Year change between 1995 and 1994	
				1995	1994	Number	Percent	Number	Percent
	Manufactured commodities—Con.								
39	Miscellaneous manufactures—Con.								
3965	Fasteners, buttons, needles, and pins	11.1	11.3	11.0	11.4	-4	-4	-2	-2
3991	Brooms and brushes	14.1	14.1	13.9	14.2	-3	-2	-	(X)
3993	Signs and advertising specialties.....	63.4	61.7	64.0	63.0	1.0	2	1.7	3
3995	Burial caskets	8.8	9.0	8.9	8.8	(Z)	(X)	-2	-2
3996, 9	Manufacturing industries, n.e.c.	64.9	64.0	65.7	66.1	-4	-1	.9	1
	Transportation and Public Utilities division ..	6 192.3	6 006.1	6 285.7	6 144.7	141.0	2	186.2	3
	Wholesale and Retail Trade divisions.....	27 164.4	26 577.4	27 651.0	27 211.3	439.7	2	587.0	2
	Finance, Insurance, and Real Estate division	6 948.8	6 932.8	6 972.7	6 915.3	57.4	1	16.0	(Z)
	Services division	32 795.8	31 487.5	33 203.0	32 051.3	1 151.7	4	1 308.3	4
	Government division	19 278.8	19 117.5	19 662.3	19 573.7	88.6	(Z)	161.3	1

Table 11. **Employment Change in Selected Mining and Manufacturing Industries—Con.**

[Thousand employees. For meaning of abbreviations and symbols, see introductory text. Industries selected based on import commodity groups with increase of 25 percent or more and at least \$5 million or more from year-ago quarter, or increase of less than 25 percent and \$20 million or more from year-ago quarter]

SIC Code	Industry	1995	1994	Fourth quarter		Quarter change between 1995 and 1994		Year change between 1995 and 1994	
				1995	1994	Number	Percent	Number	Percent
3675	Electronic capacitors	22.0	19.8	22.5	20.5	2.0	10	2.2	11
3676	Electronic resistors	11.1	10.6	11.4	10.7	.7	7	.5	5
3677	Electronic coils and transformers	16.7	16.7	16.7	16.8	-.1	-1	-	(X)
3678	Electronic connectors	18.4	16.6	18.5	17.4	1.1	6	1.8	11
3679	Electronic components, n.e.c.	137.7	131.5	141.2	132.6	8.6	6	6.2	5
3691	Storage batteries	26.0	25.8	26.5	26.4	(Z)	(X)	(Z)	(X)
3695, 9	Magnetic, optical recording media and electrical equipment, n.e.c.	49.0	50.0	48.9	50.2	-1.3	-3	-1.0	-2
3711	Motor vehicles and car bodies	354.9	339.6	356.8	352.0	4.8	1	15.3	5
3732	Boat building and repairing	56.8	52.2	56.7	55.4	1.3	2	4.6	9
3751	Motorcycles, bicycles, and parts	19.2	18.7	19.0	19.4	-.4	-2	.5	3
3795	Tanks and tank components	7.3	8.6	6.8	7.8	-1.0	-13	-1.3	-15
3821	Laboratory apparatus and furniture	10.6	10.4	10.4	10.7	-.3	-3	(Z)	(X)
3823	Process control instruments	62.4	61.6	62.2	61.4	.8	1	.8	1
3825	Instruments to measure electricity	71.5	71.7	71.7	71.4	(Z)	(X)	-2	(Z)
3826	Analytical instruments	27.2	27.2	27.1	27.2	-.1	(Z)	-	(X)
3827	Optical instruments and lenses	20.4	18.8	21.4	19.2	2.2	11	1.6	9
3829	Measuring and controlling devices, n.e.c.	38.7	38.0	38.8	37.9	.9	2	.7	2
3841	Surgical and medical instruments	100.5	101.8	100.7	100.2	.5	(Z)	-1.3	-1
3842	Surgical appliances and supplies	94.8	96.5	94.6	96.4	-1.8	-2	-1.7	-2
3851	Ophthalmic goods	36.1	37.3	35.8	36.3	-.5	-1	-1.2	-3
3861	Photographic equipment and supplies	86.5	88.8	86.0	88.5	-2.5	-3	-2.3	-3
3911	Jewelry, precious metal	37.8	38.2	39.0	39.8	-.8	-2	-.4	-1
3915	Jewelers' materials and lapidary work	6.8	6.9	6.9	7.1	-.2	-3	-.1	-1
3942, 4	Dolls, games, toys, and children's vehicles	44.3	43.9	45.2	45.6	-.4	-1	(Z)	(X)
3951	Pens and mechanical pencils	8.6	8.3	8.7	8.4	(Z)	(X)	(Z)	(X)
3996, 9	Manufacturing industries, n.e.c.	64.9	64.0	65.7	66.1	-.4	-1	.9	1

Appendix A.

Comparison of Domestic Output, Import, and Export Classifications

Adjustments are made in trade and domestic data used in this report because U.S. imports, exports, and employment are reported on different classification bases. Output classifications are based upon an industry system which reflects input and organizational characteristics of producers as well as the commodity outputs. The import statistical structure is determined by the legal distinction and classification of U.S. tariff law. The export statistical structure is determined by the *Schedule B, The Statistical Classification of Domestic and Foreign Commodities Exported from the United States*.

Prior to January 1989, U.S. imports were reported on the basis of over 10,000 tariff commodity classification codes designed for the collection of duties and U.S. exports were reported on the basis of approximately 5,000 commodity classification codes for statistical purposes. With the adoption of the harmonized commodity classification system (explained in more detail in appendix B) for both imports and exports effective January 1989, there are approximately 8,000 export codes and 14, 000 import codes.

For the purposes of relating imports and exports to domestic output and employment, imports and exports are regrouped based on five-digit SIC-based product classes.

Data for this report are derived by assigning each individual import and export commodity code the SIC-related class judged to contain the same commodities falling in such commodity codes. Many of the import and export codes can then be assigned to a single five-digit output class or combined group of classes. When the foreign trade commodity classifications are not precisely comparable to the output classes, they are assigned to output classes judged to contain the commodities accounting for the largest proportion of the value of such import and export commodity classifications. Consequently, the import and export items to each output class may not be exactly the same commodities as the output class. However, the total value assigned to each such output class is assumed to approximate the total actual value.

By arranging and aggregating import and export data on an SIC basis, the import and export of commodities can be related to output of comparable commodities produced in the domestic economy. This comparability is improved to some extent by attempts to introduce categories of importance in one system into the detail of the others.

Appendix B. Commodity Classification and Data Source

Commodity classifications used for domestic output and employment are based on the industries in which the commodities are primarily covered under the *Standard Industrial Classification Manual*, (SIC) 1987 edition. The 1987 edition of the SIC, has a total of 20 major groups at the two-digit level and 459 four-digit SIC-based manufacturing output codes. Prior to January 1989 import data were reported in terms of commodity classifications in the *Tariff Schedules of the United States Annotated (TSUSA)*, which is an official publication of the U.S. International Trade Commission (USITC). Effective January 1989, import data are initially reported in terms of commodity classifications in the *Harmonized Tariff Schedule of the United States Annotated (HTSUSA)* which is based on the *Harmonized Commodity System*.

The *Harmonized Commodity System* is a six-digit international classification system which the United States and almost all of their major trading partners negotiated and agreed upon. The HTSUSA is a ten-digit commodity classification system where the first six-digits represent the international codes, digits seven and eight represent the U.S. legal subdivisions, and digits nine and ten are statistical subdivisions. The SIC-based import product groupings relate imported commodities classified under TSUSA prior to January 1989 and HTSUSA effective this date to products which are like or similar to those in groupings organized within the domestic SIC-based classification used for the measurement of domestic output and other economic activities.

The import data used in the calculation of imports measures the value of imports at the first port of entry into the United States. The c.i.f. (cost, insurance, and freight) value is based on the purchase price and includes all freight, insurance, and other charges (excluding U.S. import duties) incurred in bringing the merchandise from the country of exportation and generally placing it alongside the carrier at the first port of entry in the United States. If the merchandise was acquired in a transaction between related parties, the purchase price used in deriving the c.i.f. value is based on an arm's-length equivalent transaction price, i.e., a price which would exist between unrelated buyers and sellers. Import charges represent the aggregated cost of all freight, insurance, and other charges, but not including U.S. import duties, incurred in bringing the merchandise from alongside the carrier at the first port of

entry in the United States. In the case of overland shipments originating in Canada or Mexico, such costs, if any, are not required to be reported.

Prior to January 1989, the export data were collected in accordance with the commodity classifications in *Schedule B, Statistical Classification of Domestic and Foreign Commodities Exported from the United States*. Effective January 1989, export data is initially reported in terms of the Harmonized Schedule B commodity classification system. Both of these export classification systems were based on the respective organizational framework of the import classification system in use prior to and beginning January 1989. Exports of domestic merchandise include commodities that are grown, produced, or manufactured in the United States, and commodities of foreign origin that have been changed in the United States from the form in which they were imported, or have been enhanced in value by further manufacture in the United States. Also, when materials or parts of foreign origin are imported into the United States and incorporated with materials or parts produced in the United States, the complete product is considered to be a domestic product.

The value reported in the export statistics generally is equivalent to the f.a.s. (free alongside ship) value at the U.S. port of export, based on the transaction price, including inland freight, insurance, and other charges incurred in placing the merchandise alongside the carrier at the U.S. port of exportation. The value, as defined, excludes the cost of loading the merchandise aboard the exporting carrier and also excludes freight, insurance, and any other charges or transportation costs beyond the port of exportation.

The employment data are derived from the Bureau of Labor Statistics (BLS) monthly establishment survey of employment, hours, and earnings. This data is also published in the monthly BLS publication *Employment and Earnings*.

The establishment data, collected on Form BLS 790, covers employment, payroll, and hours. Data include all full-and part-time employees who worked during, or received pay for, the pay period that includes the 12th of the month. The data exclude proprietors, the self-employed, and unpaid volunteer or family workers and is not seasonally adjusted.

Appendix C.

Comparability With Other Data

EMPLOYMENT DATA IN 1992 ECONOMIC CENSUSES

In comparing the Bureau of Labor Statistics (BLS) employment data with data from the Economic Censuses, the data user should bear in mind that differences in establishment and employment data may be because of definitional and coverage differences that would affect the direct comparison of such data items. Definitional differences of data items between data sources may be discerned through review of the introductory text of the appropriate economic census volume being compared.

The BLS draws a sample for its Current Employment Statistics Survey and benchmarks its industry employment estimates annually to the administrative records of employment covered by State Unemployment Insurance Laws (ES-202), except for a few noncovered industries. Therefore, differences in employment estimates from BLS and the Census Bureau's Economic Censuses can be attributable to factors that differ between the Unemployment Insurance System and the Economic Censuses. The major factors are:

1. The Census Bureau uses a finer establishment breakdown in its Economic Censuses than BLS in its Current Employment Statistics Survey.
2. The Economic Censuses include small firms with no paid employees (i.e., the owners are the employees). These firms are excluded from the BLS program.
3. Differences in industrial classifications that arise because of differences between the concept of an establishment (one location) and of the reporting unit (one or more locations) that is to be classified.
4. Differences in timing and frequency of reports submitted by employers to Federal and State agencies and differences in methods of processing and adjusting data.
5. The Census Bureau separately tabulates central administrative offices and auxiliaries at the division level. BLS codes such auxiliary units to the four-digit industry level and does not break out employment for the auxiliary units from other employment in the industry.
6. The BLS data counts jobs, not workers. In addition, some BLS data is seasonally adjusted. The data used for this report are *not* seasonally adjusted.

Appendix D.

Limitations and Analysis

Aside from the differences in commodity classifications used for imports, domestic exports, and domestic output, there are a substantial number of imported commodities which are not produced in the United States or are produced in very small quantities. (The merchandise exported from the United States is ordinarily produced in this country and reflects items important to output.) There are other problems affecting the comparability of the three sets of data. Differences in the method of valuation present the principal such problem. There are elements of duplication in the output data but not imports and exports; low valued transactions are excluded from the data for individual import and export commodity classifications; and a small portion of manufacturing output which is not allocated to detailed commodity lines has been distributed over constituent product classes. All these factors affect comparability to some degree. For these reasons the relationships shown in the tabulation should be considered only as approximations.

Valuation. Domestic producer shipments, or production, are sample estimates, subject to error, and are usually valued at the point of production. The c.i.f. value shown for imports is usually at the first port of entry into the United States. It is based on the purchase price and includes all freight, insurance, and other charges (excluding U.S. import duties) incurred in bringing the merchandise from the country of exportation and generally placing it alongside the carrier at the first port of entry in the United States. The reported export value is equivalent to the f.a.s. (free alongside ship) value at the U.S. port of export. It is based on the selling price, or cost if not sold, and includes inland freight, insurance, and other charges incurred in placing the merchandise alongside the carrier at the U.S. port of

exportation. It excludes the cost of loading the merchandise aboard the exporting carrier. It also excludes the freight, insurance, and any other cost beyond the port of exportation.

Duplication in Value of Output. Because producers' shipments of commodities may be used as material for incorporation into other commodities, combinations of five-digit product class data for such commodities may contain a certain amount of duplication.

Low Value Import Transactions. Commodity information is not shown generally for individual imports valued under \$1,251. The exception is for textile commodities where commodity information is not shown for individual imports valued under \$251. This is believed to have only a negligible affect on the statistics for the bulk of the commodities.

Low Value Export Transactions. Commodity information is not shown for individual exports valued under \$2,501. This is believed to have only a negligible affect on the statistics for the bulk of the commodities.

Lack of Detailed Import and Export Data. In some cases, comparable import and export data at the corresponding level of detail are not available for certain domestic SIC-based product classes. For those cases, it is likely that these classes of products are embodied or included in imports and exports at the four-digit level. Analysis of U.S. imports, exports, and related domestic employment focuses both on long-term and short-term changes. Merchandise imports and exports are monitored quarterly for significant increases in current-dollar value over the year-ago quarter and the prior 12 months, and industry employment is monitored quarterly to note significant changes over the same time periods.