

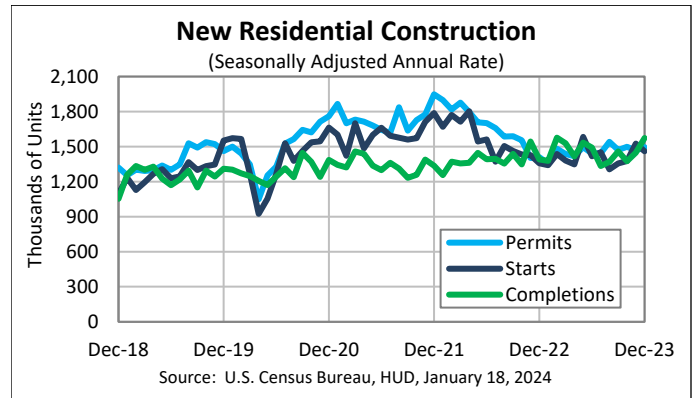
FOR RELEASE AT 8:30 AM EST, THURSDAY, JANUARY 18, 2024

## MONTHLY NEW RESIDENTIAL CONSTRUCTION, DECEMBER 2023

Release Number: CB24-11

**January 18, 2024** - The U.S. Census Bureau and the U.S. Department of Housing and Urban Development jointly announced the following new residential construction statistics for December 2023:

NEW RESIDENTIAL CONSTRUCTION DECEMBER 2023	
Building Permits:	1,495,000
Housing Starts:	1,460,000
Housing Completions:	1,574,000
Next Release: February 16, 2024	
Seasonally Adjusted Annual Rate (SAAR)	
Source: U.S. Census Bureau, HUD, January 18, 2024	



### Building Permits

Privately-owned housing units authorized by building permits in December were at a seasonally adjusted annual rate of 1,495,000. This is 1.9 percent above the revised November rate of 1,467,000 and is 6.1 percent above the December 2022 rate of 1,409,000. Single-family authorizations in December were at a rate of 994,000; this is 1.7 percent above the revised November figure of 977,000. Authorizations of units in buildings with five units or more were at a rate of 449,000 in December.

An estimated 1,469,800 housing units were authorized by building permits in 2023. This is 11.7 percent below the 2022 figure of 1,665,100.

### Housing Starts

Privately-owned housing starts in December were at a seasonally adjusted annual rate of 1,460,000. This is 4.3 percent ( $\pm 12.5$  percent)\* below the revised November estimate of 1,525,000, but is 7.6 percent ( $\pm 17.6$  percent)\* above the December 2022 rate of 1,357,000. Single-family housing starts in December were at a rate of 1,027,000; this is 8.6 percent ( $\pm 11.2$  percent)\* below the revised November figure of 1,124,000. The December rate for units in buildings with five units or more was 417,000.

An estimated 1,413,100 housing units were started in 2023. This is 9.0 percent ( $\pm 2.5$  percent) below the 2022 figure of 1,552,600.

#### Data Inquiries

Economic Indicators Division, Residential Construction Branch  
301-763-5160  
[eid.rcb.customer.service@census.gov](mailto:eid.rcb.customer.service@census.gov)

#### Media Inquiries

Public Information Office  
301-763-3030  
[pio@census.gov](mailto:pio@census.gov)



U.S. Department of Commerce  
U.S. CENSUS BUREAU  
[census.gov](https://www.census.gov)



## Housing Completions

Privately-owned housing completions in December were at a seasonally adjusted annual rate of 1,574,000. This is 8.7 percent ( $\pm 19.9$  percent)\* above the revised November estimate of 1,448,000 and is 13.2 percent ( $\pm 17.7$  percent)\* above the December 2022 rate of 1,390,000. Single-family housing completions in December were at a rate of 1,056,000; this is 8.4 percent ( $\pm 18.5$  percent)\* above the revised November rate of 974,000. The December rate for units in buildings with five units or more was 509,000.

An estimated 1,452,500 housing units were completed in 2023. This is 4.5 percent ( $\pm 3.8$  percent) above the 2022 figure of 1,390,500.

The January report is scheduled for release on February 16, 2024. View the full schedule in the Economic Briefing Room: [www.census.gov/economic-indicators/](http://www.census.gov/economic-indicators/). The full text and tables for this release can be found at [www.census.gov/construction/nrc/](http://www.census.gov/construction/nrc/).

## EXPLANATORY NOTES

In interpreting changes in the statistics in this release, note that month-to-month changes in seasonally adjusted statistics often show movements which may be irregular. It may take three months to establish an underlying trend for building permit authorizations, six months for total starts, and six months for total completions. The statistics in Table 1 in this release are based on a non-probability sample and not subject to sampling error. They are, however, still subject to nonsampling error. On average the total quantity response rate for these estimates is 78.7%. The statistics in Tables 2-5 in this release are estimated from sample surveys and are subject to sampling variability as well as nonsampling error including bias and variance from response, nonreporting, and undercoverage. Estimated relative standard errors of the most recent data are shown in the tables. Whenever a statement such as "2.5 percent ( $\pm 3.2$  percent) above" appears in the text, this indicates the range (-0.7 to +5.7 percent) in which the actual percentage change is likely to have occurred. All ranges given for percentage changes are 90 percent confidence intervals and account only for sampling variability. If a range does not contain zero, the change is statistically significant. If it does contain zero, the change is not statistically significant; that is, it is uncertain whether there was an increase or decrease. The same policies apply to the confidence intervals for percentage changes shown in the tables. On average, the preliminary seasonally adjusted estimates of total building permits, housing starts and housing completions are revised 2.7 percent or less. Explanations of confidence intervals and sampling variability can be found on our website.

[www.census.gov/construction/nrc/how\\_the\\_data\\_are\\_collected/](http://www.census.gov/construction/nrc/how_the_data_are_collected/)

## API

The Census Bureau's application programming interface lets developers create custom apps to reach new users and makes key demographic, socio-economic and housing statistics more accessible than ever before.

[www.census.gov/developers/](http://www.census.gov/developers/)

## FRED Mobile App

Receive the latest updates on the nation's key economic indicators by downloading the FRED App



<https://fred.stlouisfed.org/fred-mobile/> for both Apple and Android devices. FRED, the signature database of the Federal Reserve Bank of St. Louis, now incorporates the Census Bureau's 13 economic indicators.

###

\* The 90 percent confidence interval includes zero. In such cases, there is insufficient statistical evidence to conclude that the actual change is different from zero.

### Data Inquiries

Economic Indicators Division, Residential Construction Branch  
301-763-5160  
[eid.rcb.customer.service@census.gov](mailto:eid.rcb.customer.service@census.gov)

### Media Inquiries

Public Information Office  
301-763-3030  
[pio@census.gov](mailto:pio@census.gov)



U.S. Department of Commerce  
U.S. CENSUS BUREAU  
[census.gov](http://census.gov)



## New Privately-Owned Housing Units Authorized in Permit-Issuing Places

(Thousands of Units. Detail may not add to total because of rounding.)

**Table 1a - Seasonally adjusted annual rate**

Period	United States				Northeast		Midwest		South		West	
	Total	1 unit	2 to 4 units	5 units or more	Total	1 unit	Total	1 unit	Total	1 unit	Total	1 unit
<b>2022</b>												
December .....	1,409	748	49	612	123	58	184	95	777	448	325	147
<b>2023</b>												
January .....	1,354	748	54	552	112	53	178	92	770	455	294	148
February .....	1,482	796	48	638	113	51	188	101	825	484	356	160
March .....	1,437	829	52	556	148	55	204	103	768	502	317	169
April .....	1,417	856	58	503	107	55	174	108	803	521	333	172
May .....	1,496	902	54	540	137	56	187	106	822	544	350	196
June .....	1,441	924	52	465	106	57	196	111	801	558	338	198
July .....	1,443	930	47	466	108	51	182	115	811	566	342	198
August .....	1,541	948	59	534	120	54	208	118	837	574	376	202
September .....	1,471	963	49	459	109	54	189	117	818	590	355	202
October .....	1,498	969	48	481	128	58	170	114	852	592	348	205
November (r) .....	1,467	977	47	443	84	57	190	117	793	581	400	222
<b>December (p) .....</b>	<b>1,495</b>	<b>994</b>	<b>52</b>	<b>449</b>	<b>101</b>	<b>51</b>	<b>199</b>	<b>121</b>	<b>860</b>	<b>593</b>	<b>335</b>	<b>229</b>
Percent Change <sup>1</sup>												
<i>Dec. 2023 from Nov. 2023 .....</i>	<i>1.9%</i>	<i>1.7%</i>	<i>10.6%</i>	<i>1.4%</i>	<i>20.2%</i>	<i>-10.5%</i>	<i>4.7%</i>	<i>3.4%</i>	<i>8.4%</i>	<i>2.1%</i>	<i>-16.3%</i>	<i>3.2%</i>
<i>Dec. 2023 from Dec. 2022 .....</i>	<i>6.1%</i>	<i>32.9%</i>	<i>6.1%</i>	<i>-26.6%</i>	<i>-17.9%</i>	<i>-12.1%</i>	<i>8.2%</i>	<i>27.4%</i>	<i>10.7%</i>	<i>32.4%</i>	<i>3.1%</i>	<i>55.8%</i>

**Table 1b - Not seasonally adjusted**

Period	United States				Northeast		Midwest		South		West	
	Total	1 unit	2 to 4 units	5 units or more	Total	1 unit	Total	1 unit	Total	1 unit	Total	1 unit
2022 Annual .....	1,665.1	975.6	54.8	634.7	145.9	61.5	221.1	121.8	905.6	578.5	392.6	213.9
2023 Annual (p) .....	1,469.8	908.3	53.0	508.6	114.8	54.6	190.0	111.9	820.4	548.7	344.7	193.1
<i>Year to year percent change<sup>1</sup> .....</i>	<i>-11.7%</i>	<i>-6.9%</i>	<i>-3.3%</i>	<i>-19.9%</i>	<i>-21.3%</i>	<i>-11.2%</i>	<i>-14.1%</i>	<i>-8.1%</i>	<i>-9.4%</i>	<i>-5.2%</i>	<i>-12.2%</i>	<i>-9.7%</i>
<b>2022</b>												
December .....	107.8	51.0	3.6	53.2	11.1	4.2	11.8	5.6	57.8	31.0	27.1	10.3
<b>2023</b>												
January .....	101.0	53.1	3.8	44.1	7.5	3.7	9.8	4.8	62.2	34.4	21.5	10.2
February .....	110.9	58.7	3.2	49.0	7.3	3.3	10.6	5.9	65.5	37.8	27.4	11.6
March .....	131.3	79.4	4.7	47.2	12.6	4.5	17.6	9.3	71.8	49.0	29.3	16.6
April .....	117.6	75.1	4.7	37.8	8.5	4.7	15.2	10.0	65.9	45.3	28.0	15.2
May .....	139.6	88.9	4.8	45.8	12.3	5.5	19.0	11.4	76.0	52.6	32.2	19.5
June .....	135.7	91.0	5.0	39.7	10.5	5.8	18.9	11.5	73.3	53.5	32.9	20.2
July .....	118.7	77.8	3.8	37.1	8.9	4.5	15.4	10.2	66.5	46.3	27.8	16.8
August .....	141.8	88.3	5.6	47.9	11.0	5.2	20.4	11.6	76.5	52.5	33.9	19.0
September .....	116.7	76.5	4.0	36.2	8.4	4.6	17.2	10.5	64.1	45.7	27.1	15.7
October .....	125.3	79.8	4.5	41.0	10.5	4.9	16.6	10.6	70.6	47.8	27.6	16.5
November (r) .....	108.8	69.6	3.7	35.5	7.1	4.3	14.9	8.6	56.2	41.1	30.6	15.6
<b>December (p) .....</b>	<b>105.4</b>	<b>64.7</b>	<b>3.6</b>	<b>37.1</b>	<b>8.5</b>	<b>3.5</b>	<b>12.0</b>	<b>6.8</b>	<b>59.2</b>	<b>39.1</b>	<b>25.7</b>	<b>15.3</b>

p Preliminary

r Revised

S Does not meet publication standards because tests for identifiable and stable seasonality do not meet reliability standards

X Not applicable

<sup>1</sup> Computed using unrounded data

Note: Year-to-date permits estimates reflect revisions not distributed to months.

Source: U.S. Census Bureau and U.S. Department of Housing and Urban Development, New Residential Construction, January 18, 2024.

Additional information on the survey methodology may be found at [www.census.gov/construction/nrc/methodology.html](http://www.census.gov/construction/nrc/methodology.html).

## New Privately-Owned Housing Units Authorized, but Not Started, at End of Period

(Thousands of Units. Detail may not add to total because of rounding.)

**Table 2a - Seasonally adjusted**

Period	United States				Northeast		Midwest		South		West	
	Total	1 unit	2 to 4 units	5 units or more	Total	1 unit	Total	1 unit	Total	1 unit	Total	1 unit
<b>2022</b>												
December .....	292	139	S	149	34	15	24	11	169	85	65	28
<b>2023</b>												
January .....	298	135	S	159	36	15	26	11	170	80	66	29
February .....	301	133	S	164	35	15	24	11	177	79	65	28
March .....	291	133	S	154	33	14	21	10	173	79	64	30
April .....	293	141	S	149	33	14	23	13	171	83	66	31
May .....	282	136	S	142	34	15	18	10	162	79	68	32
June .....	272	140	S	129	34	15	21	11	153	80	64	34
July .....	267	138	S	126	33	14	21	11	151	80	62	33
August .....	276	140	S	131	34	14	22	12	156	81	64	33
September .....	277	141	S	131	35	15	22	13	153	79	67	34
October (r) .....	285	145	S	135	38	16	19	14	161	83	67	32
November (r) .....	280	139	S	136	33	14	19	12	158	80	70	33
<b>December (p) .....</b>	<b>266</b>	<b>140</b>	<b>S</b>	<b>121</b>	<b>28</b>	<b>13</b>	<b>21</b>	<b>12</b>	<b>152</b>	<b>83</b>	<b>65</b>	<b>32</b>
Average RSE (%) <sup>1</sup> .....	6	6	X	11	35	19	10	10	7	7	10	13
Percent Change <sup>2</sup>												
<b>Dec. 2023 from Nov. 2023 .....</b>	<b>-5.0%</b>	<b>0.7%</b>	<b>S</b>	<b>-11.0%</b>	<b>-15.2%</b>	<b>-7.1%</b>	<b>10.5%</b>	<b>0.0%</b>	<b>-3.8%</b>	<b>3.8%</b>	<b>-7.1%</b>	<b>-3.0%</b>
90 percent confidence interval <sup>3</sup> .....	± 4.4	± 3.8	X	± 8.0	± 6.7	± 7.8	± 13.6	± 7.5	± 7.1	± 6.2	± 5.4	± 6.1
<b>Dec. 2023 from Dec. 2022 .....</b>	<b>-8.9%</b>	<b>0.7%</b>	<b>S</b>	<b>-18.8%</b>	<b>-17.6%</b>	<b>-13.3%</b>	<b>-12.5%</b>	<b>9.1%</b>	<b>-10.1%</b>	<b>-2.4%</b>	<b>0.0%</b>	<b>14.3%</b>
90 percent confidence interval <sup>3</sup> .....	± 5.1	± 8.6	X	± 7.3	± 20.0	± 29.7	± 16.4	± 25.2	± 7.0	± 10.2	± 11.7	± 16.6

**Table 2b - Not seasonally adjusted**

Period	United States				Northeast		Midwest		South		West	
	Total	1 unit	2 to 4 units	5 units or more	Total	1 unit	Total	1 unit	Total	1 unit	Total	1 unit
<b>2022</b>												
December .....	294.0	133.8	4.0	156.1	35.9	14.9	21.1	9.0	170.4	83.2	66.7	26.8
<b>2023</b>												
January .....	299.1	130.4	4.4	164.3	36.4	14.8	24.6	9.1	172.1	78.1	66.0	28.4
February .....	300.2	131.1	3.7	165.5	37.6	15.0	23.7	10.6	174.8	77.4	64.2	28.1
March .....	300.5	139.4	3.5	157.6	34.3	14.6	25.5	12.0	172.9	80.2	67.8	32.6
April .....	296.1	142.6	3.4	150.2	32.8	14.2	26.5	15.2	169.2	82.3	67.7	30.9
May .....	286.2	142.2	3.5	140.5	35.7	15.5	19.0	11.6	163.6	81.1	68.0	34.0
June .....	278.9	146.2	3.3	129.5	35.5	15.4	21.1	12.3	155.2	81.6	67.1	36.8
July .....	262.1	136.8	3.4	121.9	32.5	13.7	18.8	10.7	149.6	79.6	61.3	32.8
August .....	276.6	142.9	4.5	129.1	32.3	14.0	22.2	12.7	156.1	82.2	66.0	34.0
September .....	271.8	138.8	4.9	128.1	32.1	14.6	22.2	12.7	151.5	78.9	66.1	32.6
October (r) .....	281.8	143.8	5.0	133.0	35.9	15.8	18.8	13.1	161.3	84.0	65.8	30.9
November (r) .....	269.0	133.8	5.3	129.9	31.7	13.6	18.2	10.0	152.2	79.3	66.9	30.9
<b>December (p) .....</b>	<b>264.7</b>	<b>133.3</b>	<b>5.1</b>	<b>126.3</b>	<b>29.7</b>	<b>12.7</b>	<b>18.4</b>	<b>9.8</b>	<b>151.5</b>	<b>80.4</b>	<b>65.1</b>	<b>30.3</b>
Average RSE (%) <sup>1</sup> .....	6	6	31	11	35	19	10	10	7	7	10	13

p Preliminary

r Revised

S Does not meet publication standards because tests for identifiable and stable seasonality do not meet reliability standards

X Not applicable

<sup>1</sup> Average relative standard error for the latest 6-month period

<sup>2</sup> Computed using unrounded data

<sup>3</sup> See the Explanatory Notes in the accompanying text for an explanation of 90 percent confidence intervals

Note: These data represent the number of housing units authorized in all months up to and including the last day of the reporting period and not started as of that date without regard to the months of original permit issuance. Cancelled, abandoned, expired, and revoked permits are excluded.

Source: U.S. Census Bureau and U.S. Department of Housing and Urban Development, New Residential Construction, January 18, 2024.

Additional information on the survey methodology may be found at <[www.census.gov/construction/nrc/methodology.html](http://www.census.gov/construction/nrc/methodology.html)>.

## New Privately-Owned Housing Units Started

(Thousands of Units. Detail may not add to total because of rounding.)

**Table 3a - Seasonally adjusted annual rate**

Period	United States				Northeast		Midwest		South		West	
	Total	1 unit	2 to 4 units	5 units or more	Total	1 unit	Total	1 unit	Total	1 unit	Total	1 unit
<b>2022</b>												
December	1,357	887	S	461	203	125	128	93	714	499	312	170
<b>2023</b>												
January	1,340	823	S	506	128	61	128	98	786	534	298	130
February	1,436	835	S	588	105	69	187	87	792	514	352	165
March	1,380	843	S	515	185	67	133	113	827	535	235	128
April	1,348	847	S	489	124	58	175	92	745	502	304	195
May	1,583	1,012	S	563	96	61	260	139	880	617	347	195
June	1,418	930	S	473	98	59	167	111	813	558	340	202
July	1,451	988	S	454	107	59	174	123	782	551	388	255
August	1,305	948	S	350	128	57	160	108	732	587	285	196
September	1,356	966	S	376	84	51	192	118	784	584	296	213
October (r)	1,376	974	S	384	79	60	215	115	727	547	355	252
November (r)	1,525	1,124	S	388	130	72	205	169	829	633	361	250
<b>December (p)</b>	<b>1,460</b>	<b>1,027</b>	<b>S</b>	<b>417</b>	<b>108</b>	<b>59</b>	<b>187</b>	<b>128</b>	<b>787</b>	<b>588</b>	<b>378</b>	<b>252</b>
Average RSE (%) <sup>1</sup>	6	5	X	17	22	22	13	10	8	7	11	10
Percent Change <sup>2</sup>												
<b>Dec. 2023 from Nov. 2023</b>	<b>-4.3%</b>	<b>-8.6%</b>	<b>S</b>	<b>7.5%</b>	<b>-16.9%</b>	<b>-18.1%</b>	<b>-8.8%</b>	<b>-24.3%</b>	<b>-5.1%</b>	<b>-7.1%</b>	<b>4.7%</b>	<b>0.8%</b>
90 percent confidence interval <sup>3</sup>	± 12.5	± 11.2	X	± 32.8	± 25.9	± 19.6	± 34.9	± 13.3	± 22.3	± 19.4	± 27.9	± 25.8
<b>Dec. 2023 from Dec. 2022</b>	<b>7.6%</b>	<b>15.8%</b>	<b>S</b>	<b>-9.5%</b>	<b>-46.8%</b>	<b>-52.8%</b>	<b>46.1%</b>	<b>37.6%</b>	<b>10.2%</b>	<b>17.8%</b>	<b>21.2%</b>	<b>48.2%</b>
90 percent confidence interval <sup>3</sup>	± 17.6	± 18.7	X	± 39.3	± 41.6	± 34.2	± 73.7	± 52.8	± 22.7	± 26.9	± 28.0	± 34.8

**Table 3b - Not seasonally adjusted**

Period	United States				Northeast		Midwest		South		West	
	Total	1 unit	2 to 4 units	5 units or more	Total	1 unit	Total	1 unit	Total	1 unit	Total	1 unit
2022 Annual	1,552.6	1,005.2	16.4	531.0	142.1	63.0	205.8	129.7	834.1	581.3	370.6	231.2
2023 Annual (p)	1,413.1	944.5	13.1	455.5	113.5	60.8	183.8	118.3	788.0	561.7	327.8	203.7
RSE (%)	2	1	32	4	7	8	3	4	2	1	3	3
<b>Year to year percent change<sup>2</sup></b>	<b>-9.0%</b>	<b>-6.0%</b>	<b>-20.2%</b>	<b>-14.2%</b>	<b>-20.1%</b>	<b>-3.5%</b>	<b>-10.7%</b>	<b>-8.8%</b>	<b>-5.5%</b>	<b>-3.4%</b>	<b>-11.6%</b>	<b>-11.9%</b>
90 percent confidence interval <sup>3</sup>	± 2.5	± 2.2	± 24.4	± 6.2	± 11.1	± 19.7	± 4.1	± 5.5	± 2.9	± 2.7	± 7.9	± 4.9
<b>2022</b>												
December	94.7	61.1	0.7	33.0	14.2	8.6	7.8	5.4	51.2	35.8	21.4	11.3
<b>2023</b>												
January	97.7	57.9	0.8	39.0	8.8	3.7	7.1	4.7	59.6	40.2	22.2	9.2
February	103.2	58.9	1.0	43.3	6.2	3.6	11.5	4.1	59.5	39.1	25.9	12.1
March	114.0	71.4	1.8	40.8	14.7	5.4	9.8	8.3	69.9	46.7	19.6	11.1
April	121.7	78.8	1.0	41.9	10.9	5.3	15.5	8.4	66.7	45.9	28.5	19.3
May	146.0	92.6	0.8	52.6	8.8	5.5	26.3	15.0	79.3	54.6	31.6	17.4
June	132.6	89.8	1.4	41.5	9.2	5.8	16.8	11.9	75.3	52.9	31.3	19.2
July	131.4	91.9	0.8	38.8	10.3	6.2	17.1	12.7	69.2	49.5	34.8	23.5
August	115.8	84.6	0.6	30.5	11.3	5.1	14.9	10.4	64.2	51.5	25.4	17.6
September	117.0	82.8	1.3	32.9	7.6	4.7	17.6	11.1	66.7	49.1	25.1	17.9
October (r)	115.1	81.2	1.5	32.4	6.7	5.1	19.9	11.5	59.3	44.1	29.2	20.5
November (r)	117.4	84.7	1.1	31.6	11.1	6.3	15.6	12.7	62.6	46.6	28.1	19.1
<b>December (p)</b>	<b>101.2</b>	<b>69.9</b>	<b>1.1</b>	<b>30.2</b>	<b>7.7</b>	<b>4.1</b>	<b>11.7</b>	<b>7.5</b>	<b>55.8</b>	<b>41.4</b>	<b>25.9</b>	<b>16.9</b>
Average RSE (%) <sup>1</sup>	6	5	48	17	22	22	13	10	8	7	11	10

p Preliminary

r Revised

S Does not meet publication standards because tests for identifiable and stable seasonality do not meet reliability standards

X Not applicable

<sup>1</sup> Average relative standard error for the latest 6-month period

<sup>2</sup> Computed using unrounded data

<sup>3</sup> See the Explanatory Notes in the accompanying text for an explanation of 90 percent confidence intervals

Source: U.S. Census Bureau and U.S. Department of Housing and Urban Development, New Residential Construction, January 18, 2024. Additional information on the survey methodology may be found at <[www.census.gov/construction/nrc/methodology.html](http://www.census.gov/construction/nrc/methodology.html)>.

## New Privately-Owned Housing Units Under Construction at End of Period

(Thousands of Units. Detail may not add to total because of rounding.)

**Table 4a - Seasonally adjusted**

Period	United States				Northeast		Midwest		South		West	
	Total	1 unit	2 to 4 units	5 units or more	Total	1 unit	Total	1 unit	Total	1 unit	Total	1 unit
<b>2022</b>												
December .....	1,696	757	S	923	218	67	218	101	789	400	471	189
<b>2023</b>												
January .....	1,695	747	S	932	221	67	211	100	794	397	469	183
February .....	1,686	727	S	943	219	67	211	97	787	385	469	178
March .....	1,680	708	S	955	217	67	214	96	787	376	462	169
April .....	1,680	697	S	966	214	66	210	93	796	370	460	168
May .....	1,687	693	S	978	214	66	213	93	797	369	463	165
June .....	1,692	684	S	991	217	66	212	91	799	362	464	165
July .....	1,697	679	S	1,001	217	65	209	90	800	357	471	167
August .....	1,694	677	S	1,000	215	66	212	88	796	356	471	167
September .....	1,679	671	S	991	212	65	210	87	790	352	467	167
October (r) .....	1,680	667	S	996	211	65	210	88	786	346	473	168
November (r) .....	1,685	679	S	989	212	67	213	92	784	350	476	170
<b>December (p) .....</b>	<b>1,679</b>	<b>671</b>	<b>S</b>	<b>991</b>	<b>207</b>	<b>65</b>	<b>216</b>	<b>91</b>	<b>776</b>	<b>342</b>	<b>480</b>	<b>173</b>
Average RSE (%) <sup>1</sup> .....	3	3	X	5	6	9	5	6	4	4	6	8
Percent Change <sup>2</sup>												
<b>Dec. 2023 from Nov. 2023 .....</b>	<b>-0.4%</b>	<b>-1.2%</b>	<b>S</b>	<b>0.2%</b>	<b>-2.4%</b>	<b>-3.0%</b>	<b>1.4%</b>	<b>-1.1%</b>	<b>-1.0%</b>	<b>-2.3%</b>	<b>0.8%</b>	<b>1.8%</b>
90 percent confidence interval <sup>3</sup> .....	± 1.1	± 1.3	X	± 1.2	± 1.7	± 2.0	± 1.6	± 2.7	± 2.1	± 2.2	± 1.2	± 1.5
<b>Dec. 2023 from Dec. 2022 .....</b>	<b>-1.0%</b>	<b>-11.4%</b>	<b>S</b>	<b>7.4%</b>	<b>-5.0%</b>	<b>-3.0%</b>	<b>-0.9%</b>	<b>-9.9%</b>	<b>-1.6%</b>	<b>-14.5%</b>	<b>1.9%</b>	<b>-8.5%</b>
90 percent confidence interval <sup>3</sup> .....	± 2.7	± 3.5	X	± 4.6	± 6.7	± 7.7	± 7.3	± 8.2	± 3.1	± 5.4	± 6.8	± 7.2

**Table 4b - Not seasonally adjusted**

Period	United States				Northeast		Midwest		South		West	
	Total	1 unit	2 to 4 units	5 units or more	Total	1 unit	Total	1 unit	Total	1 unit	Total	1 unit
<b>2022</b>												
December .....	1,666.5	735.8	16.1	914.5	215.9	66.2	216.7	101.0	770.7	385.3	463.1	183.3
<b>2023</b>												
January .....	1,670.1	724.1	16.3	929.8	220.2	66.3	207.7	96.7	780.7	384.4	461.4	176.7
February .....	1,663.9	703.4	16.4	944.1	217.2	65.2	205.1	91.2	776.9	374.2	464.7	172.8
March .....	1,663.5	687.3	17.4	958.9	215.6	65.3	207.9	89.6	780.0	366.6	460.0	165.7
April .....	1,678.7	688.6	17.3	972.8	214.3	65.4	205.9	88.2	795.6	366.3	463.0	168.7
May .....	1,695.5	693.2	16.3	986.0	215.1	65.8	213.2	92.0	801.3	369.4	465.9	166.0
June .....	1,705.8	692.7	17.3	995.8	217.8	66.0	214.5	92.6	807.2	367.8	466.3	166.2
July .....	1,717.5	698.7	17.1	1,001.7	217.9	66.2	212.4	93.0	810.5	367.2	476.6	172.4
August .....	1,711.1	695.6	16.8	998.8	215.3	66.4	215.5	91.3	805.4	366.5	475.0	171.4
September .....	1,694.4	689.5	17.1	987.9	212.6	66.3	213.4	90.8	799.3	362.4	469.2	170.0
October (r) .....	1,693.0	681.2	17.3	994.5	211.5	65.4	214.3	92.4	793.0	353.7	474.3	169.7
November (r) .....	1,691.9	685.3	17.0	989.6	212.6	67.8	216.6	95.3	785.6	351.3	477.2	170.9
<b>December (p) .....</b>	<b>1,651.0</b>	<b>652.7</b>	<b>17.1</b>	<b>981.2</b>	<b>205.7</b>	<b>64.9</b>	<b>214.8</b>	<b>91.0</b>	<b>758.4</b>	<b>328.7</b>	<b>472.1</b>	<b>168.1</b>
Average RSE (%) <sup>1</sup> .....	3	3	18	5	6	9	5	6	4	4	6	8

p Preliminary

r Revised

S Does not meet publication standards because tests for identifiable and stable seasonality do not meet reliability standards

X Not applicable

<sup>1</sup> Average relative standard error for the latest 6-month period

<sup>2</sup> Computed using unrounded data

<sup>3</sup> See the Explanatory Notes in the accompanying text for an explanation of 90 percent confidence intervals

Source: U.S. Census Bureau and U.S. Department of Housing and Urban Development, New Residential Construction, January 18, 2024.

Additional information on the survey methodology may be found at <[www.census.gov/construction/nrc/methodology.html](http://www.census.gov/construction/nrc/methodology.html)>.

## New Privately-Owned Housing Units Completed

(Thousands of Units. Detail may not add to total because of rounding.)

**Table 5a - Seasonally adjusted annual rate**

Period	United States				Northeast		Midwest		South		West	
	Total	1 unit	2 to 4 units	5 units or more	Total	1 unit	Total	1 unit	Total	1 unit	Total	1 unit
<b>2022</b>												
December .....	1,390	995	S	381	115	60	187	130	766	589	322	216
<b>2023</b>												
January .....	1,377	1,018	S	350	105	60	182	134	738	586	352	238
February .....	1,577	1,029	S	542	131	64	205	124	881	623	360	218
March .....	1,528	1,035	S	480	135	66	215	133	761	602	417	234
April .....	1,416	979	S	420	136	74	211	127	734	565	335	213
May .....	1,534	1,007	S	509	118	64	200	137	880	574	336	232
June .....	1,492	1,008	S	476	133	61	189	128	845	611	325	208
July .....	1,334	1,018	S	307	96	59	205	153	746	597	287	209
August .....	1,370	954	S	405	102	40	187	134	770	584	311	196
September .....	1,459	989	S	461	104	50	183	116	826	619	346	204
October (r) .....	1,375	990	S	372	101	73	166	98	802	610	306	209
November (r) .....	1,448	974	S	458	106	57	166	111	877	591	299	215
<b>December (p) .....</b>	<b>1,574</b>	<b>1,056</b>	<b>S</b>	<b>509</b>	<b>136</b>	<b>70</b>	<b>200</b>	<b>129</b>	<b>904</b>	<b>649</b>	<b>334</b>	<b>208</b>
Average RSE (%) <sup>1</sup> .....	7	6	X	15	27	22	12	13	10	9	12	11
Percent Change <sup>2</sup>												
<b>Dec. 2023 from Nov. 2023 .....</b>	<b>8.7%</b>	<b>8.4%</b>	<b>S</b>	<b>11.1%</b>	<b>28.3%</b>	<b>22.8%</b>	<b>20.5%</b>	<b>16.2%</b>	<b>3.1%</b>	<b>9.8%</b>	<b>11.7%</b>	<b>-3.3%</b>
90 percent confidence interval <sup>3</sup> .....	± 19.9	± 18.5	X	± 43.8	± 63.2	± 100.7	± 52.0	± 48.1	± 30.4	± 25.9	± 29.1	± 22.9
<b>Dec. 2023 from Dec. 2022 .....</b>	<b>13.2%</b>	<b>6.1%</b>	<b>S</b>	<b>33.6%</b>	<b>18.3%</b>	<b>16.7%</b>	<b>7.0%</b>	<b>-0.8%</b>	<b>18.0%</b>	<b>10.2%</b>	<b>3.7%</b>	<b>-3.7%</b>
90 percent confidence interval <sup>3</sup> .....	± 17.7	± 12.4	X	± 45.6	± 47.7	± 67.2	± 36.6	± 32.6	± 29.0	± 18.3	± 25.1	± 18.4

**Table 5b - Not seasonally adjusted**

Period	United States				Northeast		Midwest		South		West	
	Total	1 unit	2 to 4 units	5 units or more	Total	1 unit	Total	1 unit	Total	1 unit	Total	1 unit
2022 Annual .....	1,390.5	1,022.0	9.4	359.1	115.4	59.8	197.2	136.5	747.0	593.1	330.9	232.6
2023 Annual (p) .....	1,452.5	1,002.5	11.5	438.5	116.4	61.2	191.5	126.4	813.4	601.1	331.2	213.7
RSE (%) .....	2	2	26	6	7	7	4	3	3	3	4	3
<b>Year to year percent change<sup>2</sup> .....</b>	<b>4.5%</b>	<b>-1.9%</b>	<b>22.7%</b>	<b>22.1%</b>	<b>0.9%</b>	<b>2.3%</b>	<b>-2.9%</b>	<b>-7.4%</b>	<b>8.9%</b>	<b>1.4%</b>	<b>0.1%</b>	<b>-8.1%</b>
90 percent confidence interval <sup>3</sup> .....	± 3.8	± 4.7	± 32.5	± 11.7	± 18.4	± 7.4	± 11.3	± 6.2	± 6.9	± 8.1	± 5.4	± 5.2
<b>2022</b>												
December .....	132.0	96.8	1.3	33.9	10.8	5.8	17.2	12.2	73.8	58.1	30.2	20.7
<b>2023</b>												
January .....	94.8	71.0	0.6	23.2	6.9	3.9	12.2	9.0	51.5	41.5	24.2	16.7
February .....	111.7	76.9	0.4	34.4	8.4	4.1	13.9	8.8	64.8	48.5	24.6	15.6
March .....	126.4	87.2	1.0	38.2	10.4	4.9	16.4	9.9	66.7	54.1	32.9	18.3
April .....	111.3	77.4	1.3	32.6	9.7	4.9	16.4	9.9	59.2	46.0	26.0	16.6
May .....	129.6	84.4	1.6	43.7	10.5	5.8	16.5	11.2	74.3	48.0	28.3	19.3
June .....	131.1	87.2	0.7	43.2	12.5	6.0	16.7	11.1	72.4	51.2	29.5	18.9
July .....	115.7	83.0	0.9	31.8	9.1	5.2	18.1	12.7	63.5	48.0	25.1	17.0
August .....	122.1	82.4	1.1	38.6	9.4	3.5	16.8	11.7	67.1	49.4	28.7	17.8
September .....	123.0	83.8	0.8	38.4	9.0	4.5	16.3	10.7	68.6	51.3	29.2	17.3
October (r) .....	118.6	85.2	1.1	32.3	8.8	6.3	15.2	9.3	67.1	50.5	27.5	19.1
November (r) .....	116.4	79.1	1.3	36.0	8.6	4.8	14.2	9.9	69.6	47.1	23.9	17.3
<b>December (p) .....</b>	<b>151.8</b>	<b>104.8</b>	<b>0.9</b>	<b>46.2</b>	<b>13.3</b>	<b>7.3</b>	<b>18.8</b>	<b>12.3</b>	<b>88.5</b>	<b>65.4</b>	<b>31.3</b>	<b>19.9</b>
Average RSE (%) <sup>1</sup> .....	7	6	48	15	27	22	12	13	10	9	12	11

p Preliminary

r Revised

S Does not meet publication standards because tests for identifiable and stable seasonality do not meet reliability standards

X Not applicable

<sup>1</sup> Average relative standard error for the latest 6-month period

<sup>2</sup> Computed using unrounded data

<sup>3</sup> See the Explanatory Notes in the accompanying text for an explanation of 90 percent confidence intervals

Source: U.S. Census Bureau and U.S. Department of Housing and Urban Development, New Residential Construction, January 18, 2024. Additional information on the survey methodology may be found at <[www.census.gov/construction/nrc/methodology.html](http://www.census.gov/construction/nrc/methodology.html)>.