

U.S. Residential Construction Statistics

Customer Information Package



United States™
Census
Bureau

Residential Construction Branch
Economic Indicators Division
Phone: (301) 763-5160

Effective: October 1, 2016

U.S. RESIDENTIAL CONSTRUCTION STATISTICS

CUSTOMER INFORMATION PACKAGE

*Residential Construction Branch
Economic Indicators Division
U.S. Census Bureau
Washington, D.C. 20233-6900*

SUBJECT-MATTER:

Data files are available for Housing Units Authorized by Building Permits

GEOGRAPHIC COVERAGE & DATA AVAILABILITY:

Building Permits Data:

Data tabulated by State, Metropolitan Area (MA), County, and individual permit-issuing places are available as ASCII, comma-delimited files. Data are shown for the number of buildings, number of housing units, and permit valuation within four sizes of residential buildings: (1) single family houses (attached and detached combined), (2) two-unit buildings, (3) three- and four-unit buildings, and (4) residential buildings with five or more units.

- **United States** and four Census regions - These are available free on the Internet as PDF or Excel files (<http://www.census.gov/construction/bps>).
- **States** (aggregated totals are shown for each state, division, region, and the United States). These are available free on the Internet as text files or can be downloaded as ASCII, comma-delimited files. (<http://www.census.gov/construction/bps>)
- **Metropolitan Areas** – The files show aggregated totals for Core-Based Statistical Areas (CBSAs). These are available free on the Internet as text files or can be downloaded as ASCII, comma-delimited files. (<http://www.census.gov/construction/bps>)
- **Counties** – The monthly files show county totals for all counties in which **every** permit office is requested to report monthly (about 900+). The annual file displays all counties. These are available free on the Internet (<http://censtats.census.gov/bldg/bldgprmt.shtml>) or can be downloaded as ASCII, comma-delimited files.
- **Individual permit offices** –files are available for entire regions. Data are included for the permit issuing places within the region, sorted by state and place. County and state totals are not included on these ASCII files. Monthly data are shown for the places that are requested to report monthly. Annual data are shown for all permit-issuing places in the region. These can be looked up on the Internet (<http://censtats.census.gov/bldg/bldgprmt.shtml>) or can be downloaded as ASCII, comma-delimited files – for free.



The **Monthly Cumulative Data** files are available free of charge, but not on the Internet. To obtain these files, please call the U.S. Census Bureau's Residential Construction Branch on 301-763-5160.

These files show all months of the calendar year for each permit office that is requested to report monthly (about 9,000). Prior months of the year are shown with the latest data available (late reports and corrections modify previous data). The annual file contains the latest monthly data for each permit office that is requested to report monthly. There is no annual data on this file.

- Building Permit sample files and documentation are available on the Internet at the following location: <http://www.census.gov/construction/sample.html>

The chart on the next page below shows the data series and the time periods for which they are available.



Data Series	Available Dates
<p>State:</p> <p>Current Month/Year to Date</p> <p>Annual</p>	<p>January 1988 - Present</p> <p>1980 – Present</p>
<p>Metropolitan Area:</p> <p>Current Month/Year to Date</p> <p>Annual</p>	<p>January 1988 - Present</p> <p>1980 – Present</p>
<p>County:</p> <p>Current Month/ Year to Date</p> <p>Annual</p>	<p>January 2000 - Present</p> <p>1990 – Present</p>
<p>Place-Level:</p> <p>Current Month/Year to Date</p> <p>Annual</p> <p>Cumulative***</p>	<p>January 1988 - Present</p> <p>1980 - Present</p> <p>Monthly: January 1998 - Present</p> <p>Annual: 1997 - Present</p>



**Detailed Example For Importing Permits Files to Microsoft Excel:

Save the Building Permits files to either your desktop or your hard drive

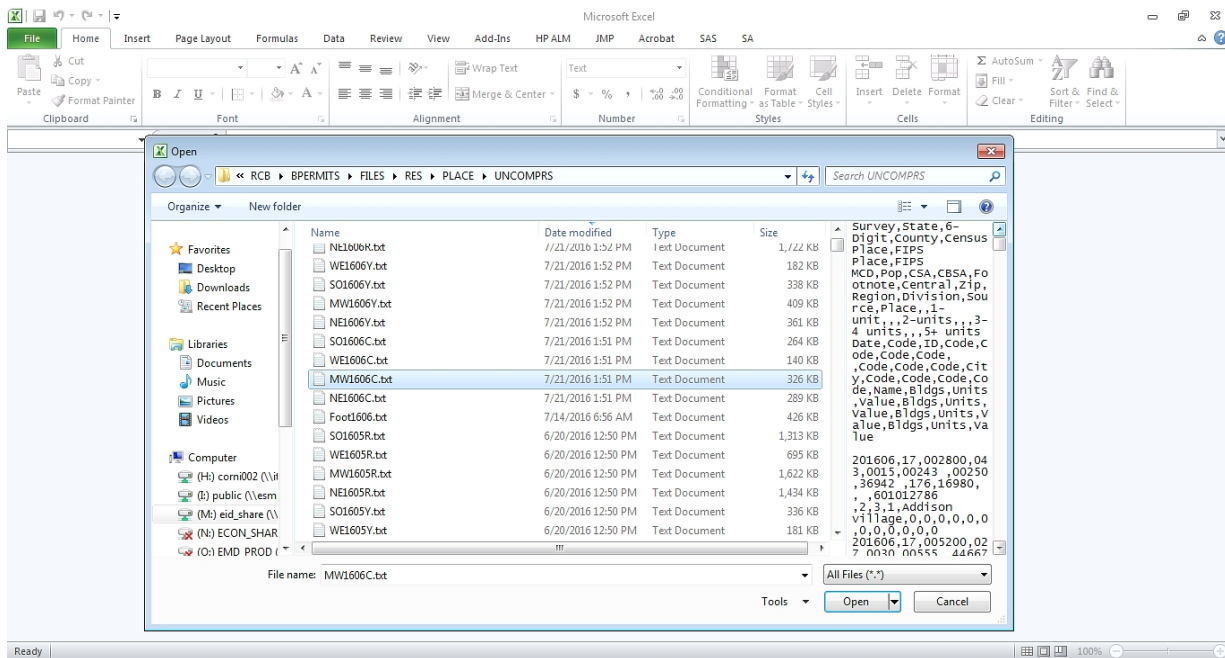
Run Excel

Click File - Open

Under "Look in" go to the area where the Building Permits files were saved:

In this example the files are saved under:

M:\ADC Construction Indicator Programs\RCB\BPERMITS\FILES\RES\PLACE\UNCOMPRS

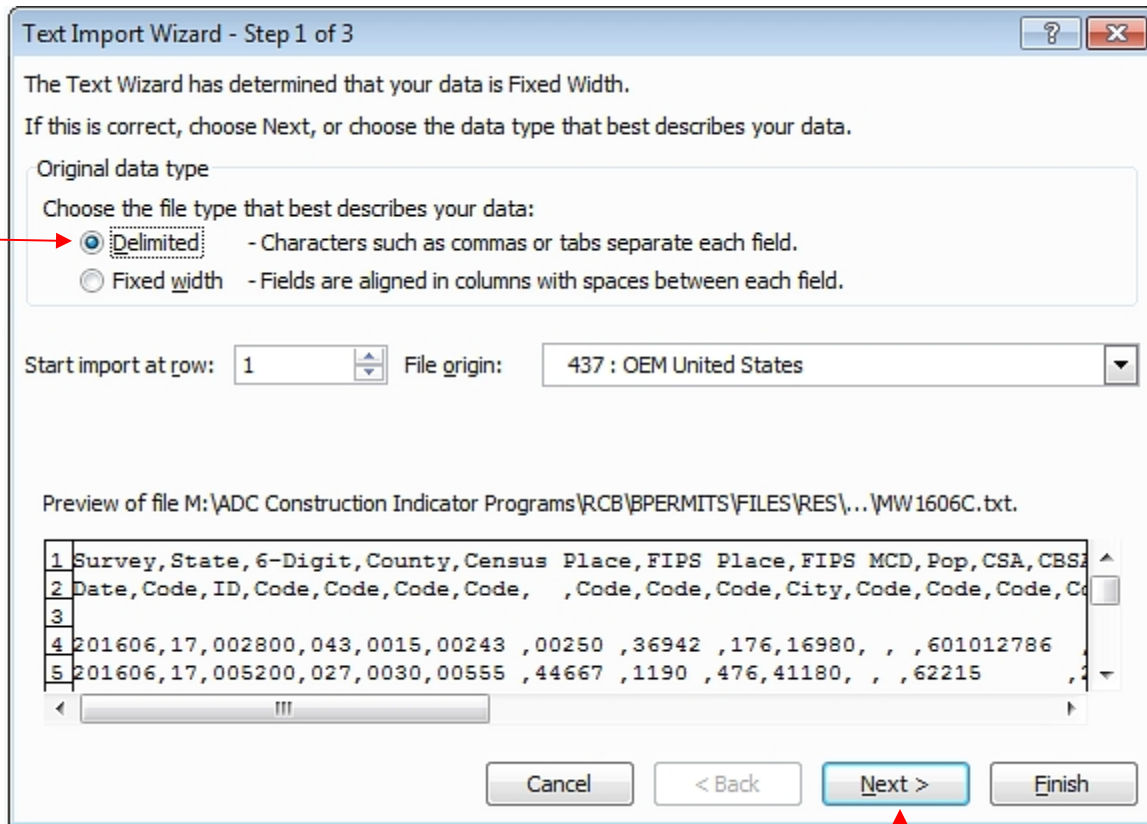


Click <Open>

On the next screen will be the Text Import Wizard

In Step 1 of 3, Select 'Delimited' radio button





Click <Next>

In Step 2 of 3, Select 'Comma' as the delimiter – it's okay to leave 'Tab' selected. In the Data Preview window, you can see that the data are now in columns.



Text Import Wizard - Step 2 of 3

This screen lets you set the delimiters your data contains. You can see how your text is affected in the preview below.

Delimiters

- Tab
- Semicolon
- Comma
- Space
- Other:

Treat consecutive delimiters as one

Text qualifier: "

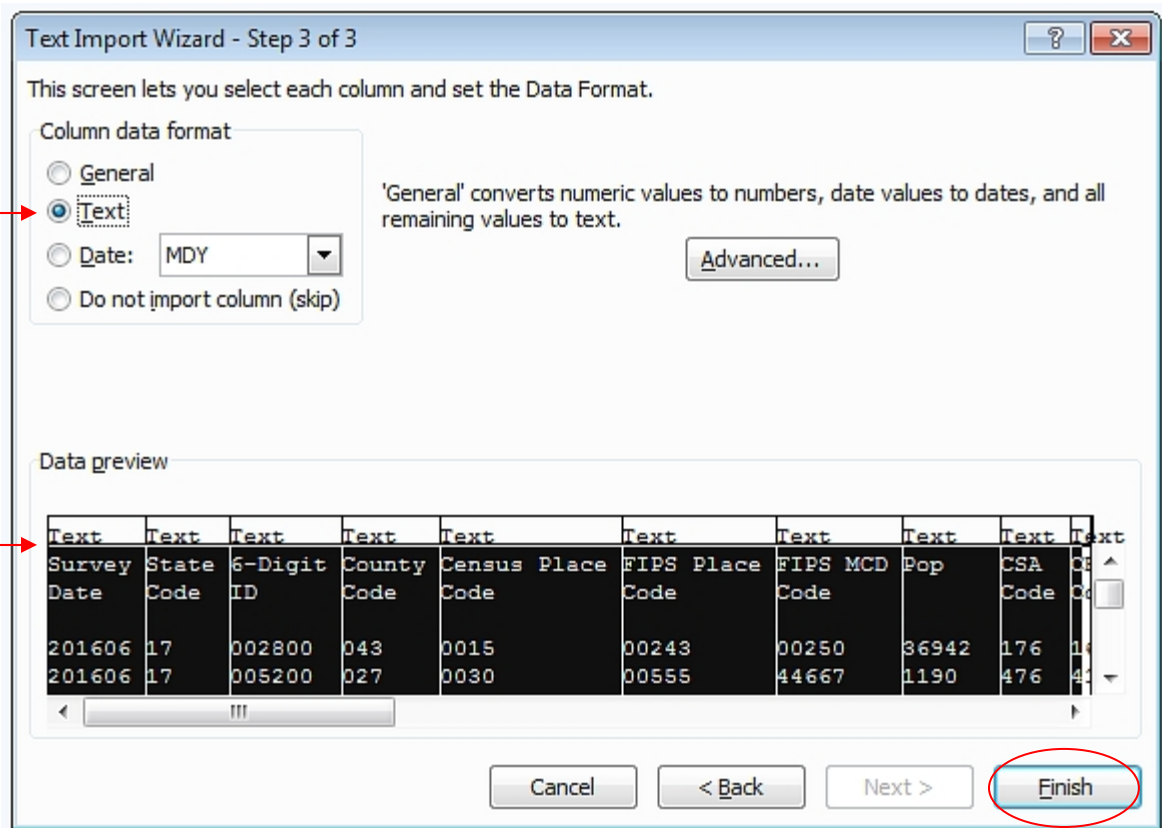
Data preview

Survey Date	State Code	6-Digit ID	County Code	Census Place Code	FIPS Place Code	FIPS MCD Code	Pop	CSA Code	CS
201606	17	002800	043	0015	00243	00250	36942	176	14
201606	17	005200	027	0030	00555	44667	1190	476	41

Buttons: Cancel, < Back, Next >, Finish

In Step 3 of 3, Select columns from 'Survey Date' through 'Place Name' and mark them as Text; leaving the other columns as General





Click <Finish>

The Excel file is now created with headers and data in columns.



MW1606C.txt - Microsoft Excel

1	Survey	State	6-Digit	County	Census PI	FIPS Place	FIPS MCD	Pop	CSA	CBSA	Footnote	Central	Zip	Region	Division	Source	Place	Bldgs	1-unit	Value	Bldgs	
2	Date	Code	ID	Code	Code	Code	Code	Code	Code	Code	Code	City	Code	Code	Code	Code	Name		Units			
3																						
4	201606	17	002800	043	0015	00243	00250	36942	176	16980			6010127862	2	3	1	Addison v	0	0	0		
5	201606	17	005200	027	0030	00555	44667	1190	476	41180			62215	2	3	3	Albers vill	0	0	0		
6	201606	17	007900	111	0050	00685	00698	21613	176	16980	2		60102	2	3	3	Algonquir	3	3	1245852		
7	201606	17	008500	119	0055	00737	00750	681	476	41180			62001	2	3	1	Alhambra	0	0	0		
8	201606	17	012700	031	0095	01010	83531	19277	176	16980			60658	2	3	1	Alsip villa	0	0	0		
9	201606	17	013900	119	0115	01114	01127	27865	476	41180	2		62002	2	3	1	Alton	0	0	0		
10	201606	17	019300	097	0160	01595	01608	14430	176	16980			60002	2	3	1	Antioch vi	0	0	0		
11	201606	17	021700	115	0180	01972	27988	947	999	19500			62501	2	3	3	Argenta vi	0	0	0		
12	201606	17	022300	031	0228	02154	81100	75101	176	16980	1		60005	2	3	1	Arlington	9	9	3285000		
13	201606	17	023200	091	0200	02258	57017	743	176	28100			60910	2	3	1	Aroma Pa	0	0	0		
14	201606	17	033100	147	0265	02882	76888	619	999	16580	2		6191303152	2	3	1	Atwood vi	0	0	0		
15	201606	17	035500	089	0280	03012	03025	130976	176	16980	2		60504	2	3	3	Aurora	7	7	1857947		
16	201606	17	037300	027	0290	03181	73365	1945	476	41180			62216	2	3	1	Aviston vi	1	1	254135		
17	201606	17	041200	097	0310	03610	80112	1583	176	16980			60015	2	3	5	Bannockb	0	0	0		
18	201606	17	043000	031	0323	03883	03831	2168	176	16980	2		60010	2	3	5	Barrington	1	1	335000		
19	201606	17	044500	031	0320	03844	03831	5631	176	16980	2		60010	2	3	5	Barrington	1	1	451940		
20	201606	17	046300	043	0340	04013	79410	24411	176	16980	2		60103	2	3	1	Bartlett vi	1	1	160556		
21	201606	17	047800	089	0355	04078	28885	26045	176	16980	2		60510	2	3	3	Batavia	1	1	103500		
22	201606	17	049900	097	0368	04303	05326	13638	176	16980			60099	2	3	5	Beach Par	2	2	388942		
23	201606	17	053200	027	0385	04533	78344	1040	476	41180			62219	2	3	3	Beckemey	0	0	0		
24	201606	17	053500	031	0390	04572	45447	580	176	16980			60501	2	3	1	Bedford P	1	1	250000		
25	201606	17	054400	197	0395	04585	79059	4359	176	16980			60401	2	3	1	Beecher v	0	0	0		

